

PART 1 General

1.1 CONTRACT DOCUMENTS

- .1 This Addendum forms an integral part of the Contract Documents, describing all aspects of the Work and is to be read in conjunction herewith. This document is to be read in conjunction with the drawings and specifications and shall be recognized as a Contract Document. If points arise which are at variance, this Addendum shall take precedence, unless otherwise clarified by the Architect. This Addendum shall be returned with the other bid documents

1.2 ACKNOWLEDGEMENT

- .1 The Bidder is responsible for signifying they have received this Addendum by listing the Addendum number and date in the appropriate space on the Tender Form.

PART 2 BIDDING DOCUMENTS AND GENERAL REQUIREMENTS

2.1 Bid Requirements

- .1 Refer to the Centre d'excellence en approvisionnement FRANCOachat for all clarification in the bid process.

PART 3 ARCHITECTURAL

3.1 Specifications

- .1 Add Section 09 56 13 – Resilient Base, four (4) pages. Refer to attached.

3.2 Drawings

- .1 No Items.

PART 4 STRUCTURAL

4.1 Drawings and Specifications

- .1 Refer to attached Structural Addendum(s) No. SA-04 as prepared by JP2G Consultants Inc., dated October 23, 2018. (2 Page(s)).

PART 5 MECHANICAL

5.1 Drawings and Specifications

- .1 Refer to attached Mechanical Addendum(s) No. MA-01 as prepared by JP2G Consultants Inc., dated October 17, 2018. (3 Page(s)).

PART 6 ELECTRICAL

6.1 Drawings and Specifications

- .1 No Items.

PART 7 QUESTIONS

The following items are intended for instructions to bidders on questions which do not affect the Contract Documents and are for information only.

.1 Finishes

.1 Question: 'Existing stage 141 we have RT-M (resilient tile to match) and RB-M (rubber base to match). Should I carry just install part and assume that materials will be provided by GC, as I couldn't find what materials they are.

.2 Response: This appears to be question from a flooring sub contractor and with respect to supply/install arrangements we have no comment. The materials to supplied and installed with colour/material confirmed on site to matched. This is a rubber/vinyl base and resilient tile flooring and can be viewed on site before tender close.

.2 Concrete Block Substrate

.1 Question: 'On the demolition drawing, the block substrate is not indicated to be removed. Please advise.'

.2 Response: Refer to new wall sections; the concrete block substrate is impossible to remain in place so we are not clear on the reasonableness of the question. General Contractor to demolish and remove concrete block back-up in area of new opening.

END OF DOCUMENT

PART 1 General

1.1 RELATED SECTIONS

- .1 Section 01 00 10 – General Instructions.
- .2 Section 01 61 00 - Common Product Requirements.

1.2 REFERENCES

- .1 American Society for Testing and Materials (ASTM International)
 - .1 ASTM F1861- 08, Standard Specification for Resilient Wall Base.
 - .2 ASTM F2034 - 08, Standard Specification for Sheet Linoleum Floor Covering.
- .2 Health Canada/Workplace Hazardous Materials Information System (WHMIS)
 - .1 Material Safety Data Sheets (MSDS).

1.3 ACTION AND INFORMATIONAL SUBMITTALS

- .1 Provide submittals in accordance with Section 01 00 10 - General Instructions.
- .2 Provide product data and samples: Submit duplicate 300 mm long sample pieces of each type and colour of base material.
- .3 Closeout Submittals:
 - .1 Provide maintenance data for resilient flooring for incorporation into manual.

1.4 DELIVERY, STORAGE AND HANDLING

- .1 Deliver, store and handle materials in accordance with Section 01 61 00 - Common Product Requirements.

1.5 AMBIENT CONDITIONS

- .1 Maintain air temperature and structural base temperature at flooring installation area above 20 degrees for 48 hours before, during and 48 hours after installation.

1.6 MAINTENANCE

- .1 Extra Materials:
 - .1 Provide 5% extra materials of resilient base and adhesives.
 - .2 Provide one roll of each colour and type base material required for project for maintenance use.
 - .3 Extra materials one piece and from same production run as installed materials.
 - .4 Identify each roll of base and each container of adhesive.
 - .5 Store where directed by Owner.

PART 2 Products

2.1 MATERIALS

- .1 **Resilient Base (RB-01):** to ASTM F1861: continuous, top set, complete with pre-moulded end stops and external corners:
 - .1 Type: rubber.
 - .2 Style: straight and cove.
 - .3 Thickness: 3.17 mm.
 - .4 Height: 101.6 mm.
 - .5 Lengths: cut lengths minimum 2400 mm.
 - .6 Acceptable Manufacturer: Roppe, or equivalent.
 - .7 Colour: Roppe, color 187 Blue
- .2 **Resilient Base (RB-02):** to ASTM F1861: continuous, top set, complete with pre-moulded end stops and external corners:
 - .1 Type: vinyl.
 - .2 Style: straight and cove.
 - .3 Thickness: 3.17 mm.
 - .4 Height: 101.6 mm.
 - .5 Lengths: cut lengths minimum 2400 mm.
 - .6 Acceptable Manufacturer: Roppe, or equivalent.
 - .7 Colour: Roppe, color 187 Blue
- .3 Primers and adhesives: of types recommended by resilient flooring manufacturer for specific material on applicable substrate, above, on or below grade.
 - .1 Adhesive: maximum VOC limit 50 g/L to SCAQMD Rule 1168.
- .4 Metal transition/edge strips Type **TS-01**:
 - .1 Aluminum extruded, smooth, mill finish stainless steel with lip to extend under floor finish, shoulder flush with top of adjacent floor finish.
 - .2 Acceptable Products by: Schluter Systems.

PART 3 Execution

3.1 MANUFACTURER'S INSTRUCTIONS

- .1 Compliance: comply with manufacturer's written recommendations or specifications, including product technical bulletins, handling, storage and installation instructions, and datasheets.

3.2 SITE VERIFICATION OF CONDITIONS

- .1 Ensure concrete floors are clean and dry by using test methods recommended by flooring manufacturer.

3.3 PREPARATION

- .1 Remove or treat old adhesives to prevent residual, old flooring adhesives from bleeding through to new flooring and/or interfering with the bonding of new adhesives.
- .2 Install wall base after flooring material within the space has been completed.

3.4 APPLICATION

- .1 Allow coiled wall base to lay flat for at least 24 hours at 20 degrees C prior to installation.
- .2 Lay out base to keep number of joints at minimum.
- .3 Clean substrate and prime with one coat of adhesive.
- .4 Apply adhesive to back of base, cover 80% of the back surface. Leave 6 mm uncovered space at top of the wall base to prevent excess adhesive on the wall above the base when installed.
- .5 Set base against wall and floor surfaces tightly by using 3 kg hand roller. Always roll back to starting point to prevent stretching the wall base.
- .6 Install straight and level to variation of 1:1000.
- .7 Scribe and fit to door frames and other obstructions. Use premoulded end pieces at flush door frames.
- .8 Cope internal corners. Use premoulded corner units for right angle external corners. Use formed straight base material for external corners of other angles.
- .9 Use toeless type base where floor finish will be carpet, coved type elsewhere.
- .10 Install toeless type base before installation of carpet on floors.
- .11 Heat weld base in accordance with manufacturer's printed instructions.

3.5 FIELD QUALITY CONTROL

- .1 Manufacturer's Field Services:
- .2 Provide manufacturer's field services consisting of product use recommendations and periodic site visits for inspection of product installation in accordance with manufacturer's instructions.

3.6 CLEANING

- .1 Remove excess adhesive from floor, base and wall surfaces without damage.
- .2 Clean, seal and wax floor and base surface to flooring manufacturer's printed instructions.

END OF SECTION

PAGE INTENTIONALLY LEFT BLANK

Structural Addendum

Jp2g Consultants Inc.



ENGINEERS • PLANNERS • PROJECT MANAGERS

1150 Morrison Drive, Suite 410, Ottawa, ON K2H 8S9
T 613-828-7800, F 613-828-2600, www.jp2g.com

PROJECT NAME: Civitas - CEPEO École Le Prélude Music Room Addition
ISSUED ONLY TO: CIVITAS GROUP.
ADDENDUM NUMBER: ~~#04~~ 01
ISSUE DATE: OCT. 23, 2018
ATTENTION: Douglas Rancier

DRancier@civitasgroup.ca

Changes are required to the Structural Drawings previously issued for tender/construction. Details are itemized below. Please issue notification to all concerned. Implementation of any item by the Constructor shall not commence until authorized by Change Order/Project Instruction or Site Instruction.

ITEM NUMBER	ITEM APPEARS ON DRAWING NUMBER	DESCRIPTION
1.1	SA4-01	Revised General Note to Include Shoring Shop Drawing Review. Reason: Documents Coordination

Authorized by:

JP2G CONSULTANTS INC.

A handwritten signature in black ink, appearing to be 'Bin Jiang', written over a horizontal line.

Bin Jiang, P.Eng
Senior Structural Engineer

Distribution: DOUGLAS RANCIER – CIVITAS GROUP.

Attachments: Drawing SA4-01

SHOP DRAWINGS

1. SUBMIT FOR REVIEW ALL SHOP DRAWINGS REQUIRED THESE DRAWINGS AND SPECIFICATIONS (INCLUDE TEMPORARY SHORING SHOP DRAWINGS) .
2. REVIEW OF SHOP DRAWINGS IS ON A SAMPLING BASIS, FOR GENERAL CONFORMITY WITH STRUCTURAL CONTRACT DOCUMENTS. IT IS NOT A DETAILED CHECK AND MUST NOT BE CONSTRUED AS RELIEVING THE CONTRACTOR OF RESPONSIBILITY FOR MAKING THE WORK ACCURATE AND IN CONFORMITY WITH THE CONTRACT DOCUMENTS.
3. REVIEW OF SHOP DRAWINGS DOES NOT IMPLY ANY CHANGE IN ANY OTHER CONSULTANTS' OR PROFESSIONALS' RESPONSIBILITIES RELATED TO DESIGN OF SPECIFIC ITEMS AS OUTLINED BY THE SPECIFICATIONS.
4. REVIEW OF A SPECIFIC COMPONENT ON NON-STRUCTURAL SHOP DRAWINGS (COMPONENTS ENGINEERED BY OTHERS) DOES NOT INCLUDE REVIEW OF THE ASSEMBLY OF WHICH THE ITEM MAY BE A COMPONENT.
5. IF REQUIRED, CAD FILES OF THE FULL SET OF STRUCTURAL DRAWINGS ARE AVAILABLE "AS-IS" FOR USE IN THE PREPARATION OF SHOP DRAWINGS, PROVIDED THAT THE OWNER AND THE OWNER'S CONSULTANTS ARE NOT HELD RESPONSIBLE FOR ANY ERRORS OR OMISSIONS ON THE DRAWINGS. THESE CAD DRAWINGS ARE NOT TO BE SCALED. TO RECEIVE THE CAD FILES, THE CONTRACTOR MUST BE WILLING TO SIGN A DRAWING RELEASE WAIVER.
6. ALLOW A MINIMUM OF 10 WORKING DAYS FOR REVIEW OF EACH SUBMISSION OF SHOP DRAWINGS. ALLOW MORE TIME WHEN LARGE QUANTITIES OF SHOP DRAWINGS ARE SUBMITTED. SUBMIT IN GENERAL CONFORMITY WITH THE SEQUENCE OF CONSTRUCTION INTENDED.
7. MAKE CORRECTIONS REQUIRED BY PREVIOUS REVIEW BEFORE RESUBMITTING DRAWINGS. CLEARLY INDICATE ALL CHANGES AND ADDITIONS TO PREVIOUS SUBMISSION. DO NOT ADD NEW DETAILS TO DRAWINGS WHICH HAVE BEEN STAMPED AS REVIEWED OR NOTED.
8. AFTER REVIEW, THE DRAWINGS WILL BE STAMPED AND RETURNED TO SHOW ONE OF THE FOLLOWING:

<u>NOT REVIEWED</u>	SHOWS WORK WHICH IS NOT WITHIN THE SCOPE OF STRUCTURAL CONSULTING SERVICES.
<u>REVIEWED</u>	CONTRACTOR APPEARS TO HAVE INTERPRETED THE CONTRACT DOCUMENTS CORRECTLY AND THE CONSULTANT HAS NO SPECIFIC COMMENT OR NOTES.
<u>NOTED</u>	THE CONTRACTOR SHALL ADDRESS THE NOTES

1
-
GENERAL NOTE UPDATED
 SCALE: 1:20

ÉCOLE LE PRÉLUDE MUSIC ROOM

J2 Jp2g Consultants Inc.
ENGINEERS • PLANNERS • PROJECT MANAGERS

DESIGNED BY: B. JIANG

DRAWN BY: YH

APPROVED BY: B. JIANG

SCALE:

PROJECT No.: 2160398A

DATE: OCT. 23 2018

ISSUED FOR:ADDENDUM 4

SHEET No.: SA4-01



Mechanical Addendum MA-01

Date	Oct. 17, 2018	Pages	3 (incl. this page)
To	Doug Rancier Civitas Architecture Inc.	From	Tom Armstrong, B.A., Mechanical Technologist
Client No.	-	Jp2g No.	2160398A
Project	Civitas – CEPEO École Le Prélude Music Room Addition		

Addendum clarifications, revisions, deletions and inclusions shall be read with, and form part of, the original bid documents. All parties tendering the subject project shall take note of and include for the following revisions and/or information provided which supplement the Drawings and Specifications. Receipt of this addendum shall be acknowledged by inserting the addendum number in the space provided in the Tender Forms.

1.0 Changes to Drawings

1.1 Drawing M-200

- .1 Include the information shown on SKM-200.1 and SKM-200.2 on drawing M-200

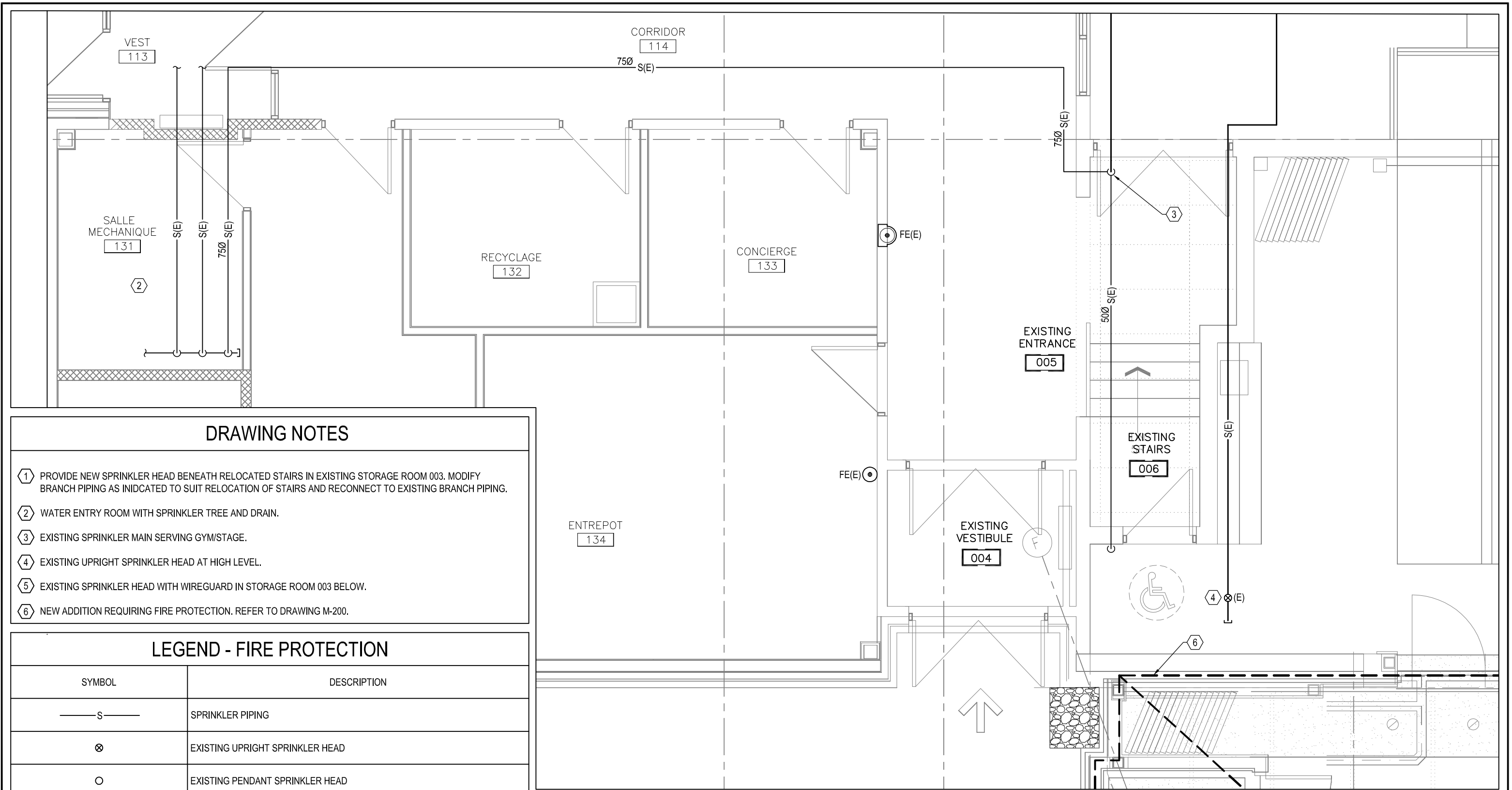
Mechanical Addendum Issued By:



Tom Armstrong, B.A.,
Mechanical Technologist

Attachments: SKM-200.1 and SKM-200.2 dated 10/17/2018

End of Mechanical Addendum MA-01



DRAWING NOTES

- ① PROVIDE NEW SPRINKLER HEAD BENEATH RELOCATED STAIRS IN EXISTING STORAGE ROOM 003. MODIFY BRANCH PIPING AS INDICATED TO SUIT RELOCATION OF STAIRS AND RECONNECT TO EXISTING BRANCH PIPING.
- ② WATER ENTRY ROOM WITH SPRINKLER TREE AND DRAIN.
- ③ EXISTING SPRINKLER MAIN SERVING GYM/STAGE.
- ④ EXISTING UPRIGHT SPRINKLER HEAD AT HIGH LEVEL.
- ⑤ EXISTING SPRINKLER HEAD WITH WIREGUARD IN STORAGE ROOM 003 BELOW.
- ⑥ NEW ADDITION REQUIRING FIRE PROTECTION. REFER TO DRAWING M-200.

LEGEND - FIRE PROTECTION

SYMBOL	DESCRIPTION
— S —	SPRINKLER PIPING
⊗	EXISTING UPRIGHT SPRINKLER HEAD
○	EXISTING PENDANT SPRINKLER HEAD
●	NEW PENDANT SPRINKLER HEAD

1 SKM-200.1 **GROUND FLOOR PLAN - FIRE PROTECTION LAYOUT - EXISTING SYSTEM**
SCALE: 1:50



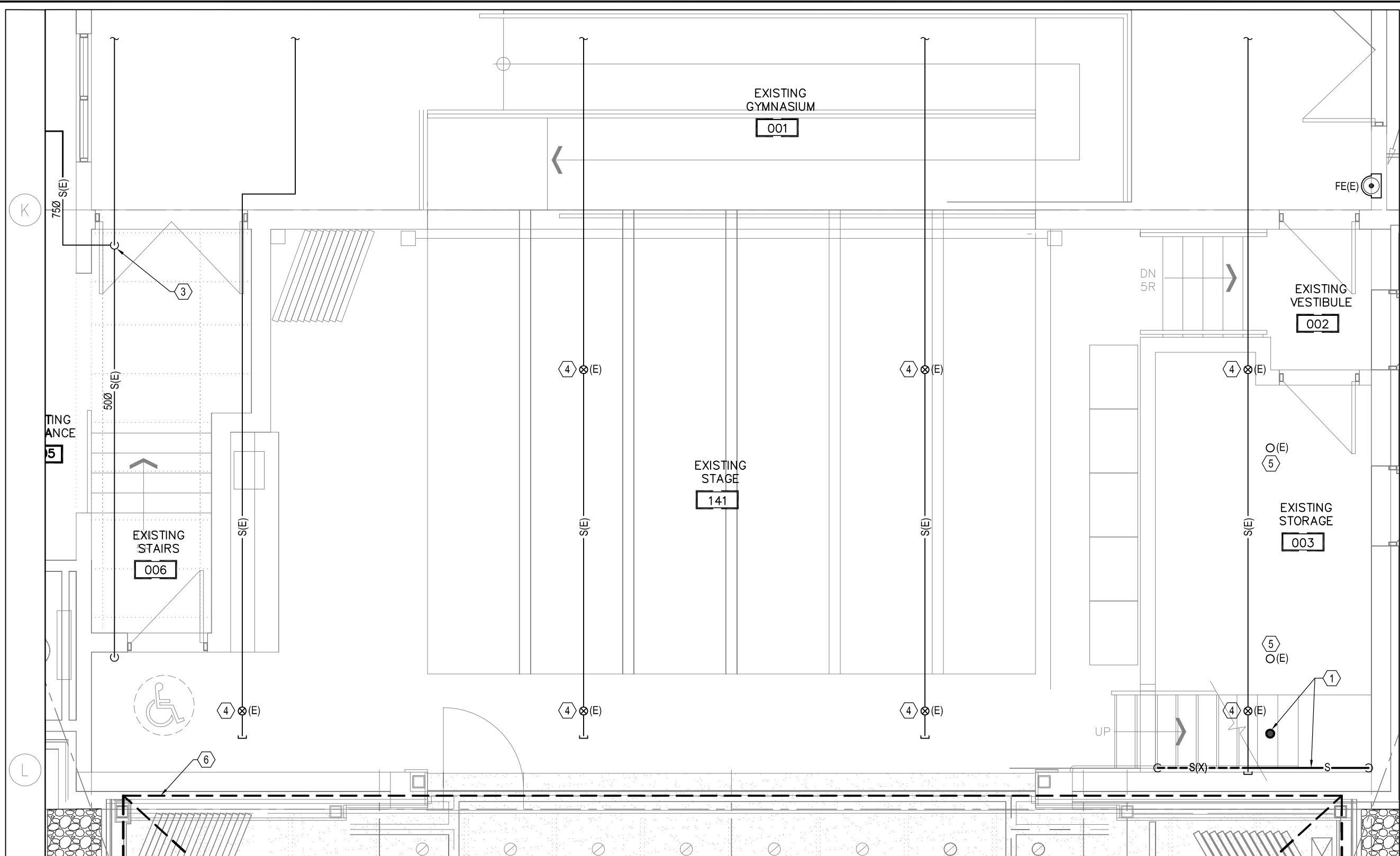
Project:
**ECOLE LE PRELUDE MUSIC ROOM
ADDITION**
6025 PROMENAGE LONGLEAF ORLEANS, ON

Drawing:
**GROUND FLOOR PLAN
FIRE PROTECTION LAYOUT
EXISTING SYSTEM**

DESIGNED BY: T.ARMSTRONG	PROJECT No.: 2160398A
DRAWN BY: T. ARMSTRONG	ISSUE DATE: 10/17/2018
CHECKED BY: M.MACISAAC	ISSUED FOR: ADDENDUM MA-01
APPROVED BY: M.MACISAAC	SHEET No.: SKM-200.1

DRAWING NOTES

- ① PROVIDE NEW SPRINKLER HEAD BENEATH RELOCATED STAIRS IN EXISTING STORAGE ROOM 003. MODIFY BRANCH PIPING AS INDICATED TO SUIT RELOCATION OF STAIRS AND RECONNECT TO EXISTING BRANCH PIPING.
- ② WATER ENTRY ROOM WITH SPRINKLER TREE AND DRAIN.
- ③ EXISTING SPRINKLER MAIN SERVING GYM/STAGE.
- ④ EXISTING UPRIGHT SPRINKLER HEAD AT HIGH LEVEL.
- ⑤ EXISTING SPRINKLER HEAD WITH WIREGUARD IN STORAGE ROOM 003 BELOW.
- ⑥ NEW ADDITION REQUIRING FIRE PROTECTION. REFER TO DRAWING M-200.



1 GROUND FLOOR PLAN - FIRE PROTECTION LAYOUT - EXISTING AND NEW WORK
 SKM-200.2 SCALE: 1:50



Project:
**ECOLE LE PRELUDE MUSIC ROOM
 ADDITION**
 6025 PROMENAGE LONGLEAF ORLEANS, ON

Drawing:
 GROUND FLOOR PLAN
 FIRE PROTECTION LAYOUT
 EXISTING AND NEW WORK

DESIGNED BY: T.ARMSTRONG
 DRAWN BY: T. ARMSTRONG
 CHECKED BY: M.MACISAAC
 APPROVED BY: M.MACISAAC

PROJECT No.: 2160398A
 ISSUE DATE: 10/17/2018
 ISSUED FOR: ADDENDUM MA-01
 SHEET No.: SKM-200.2