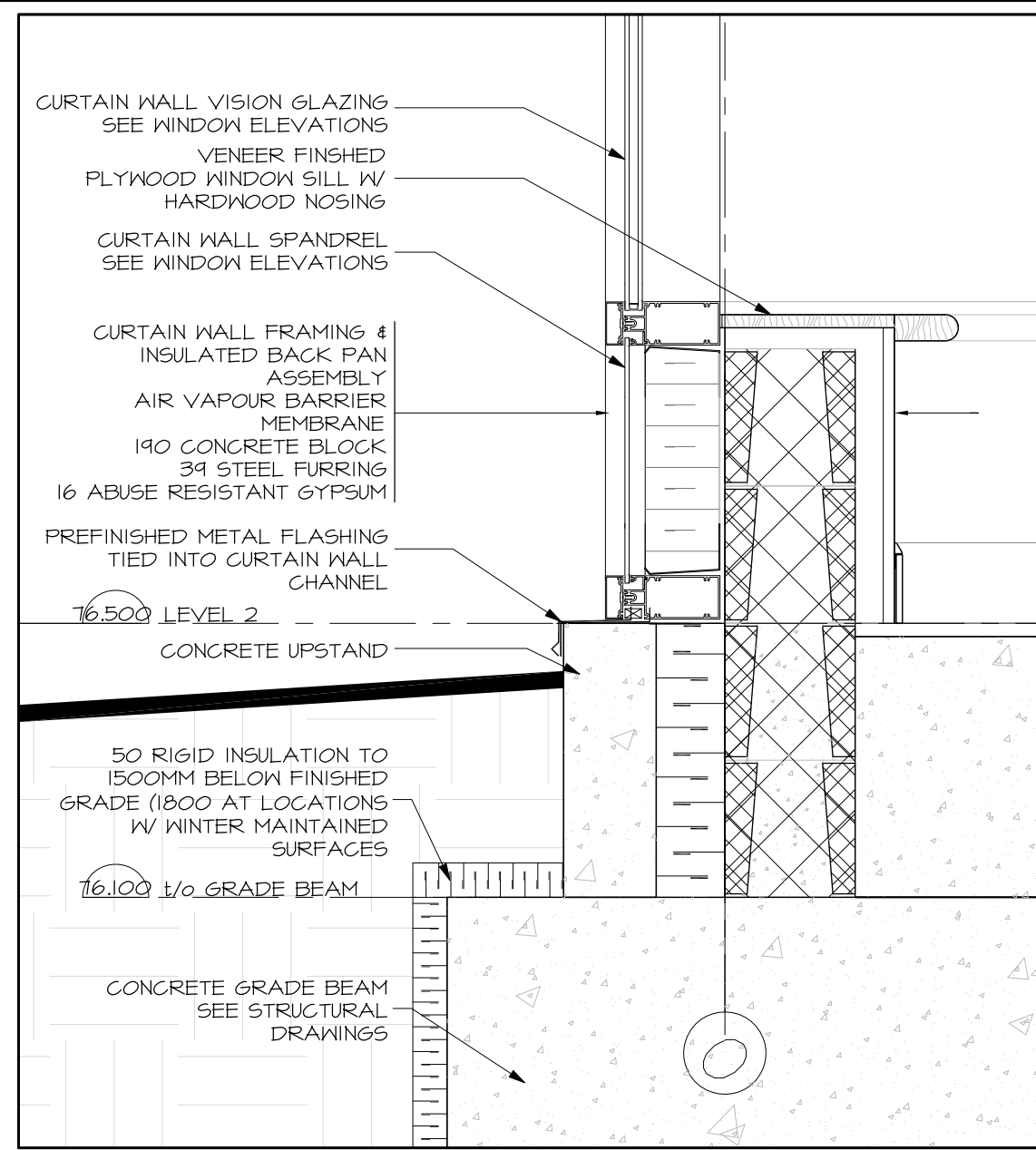
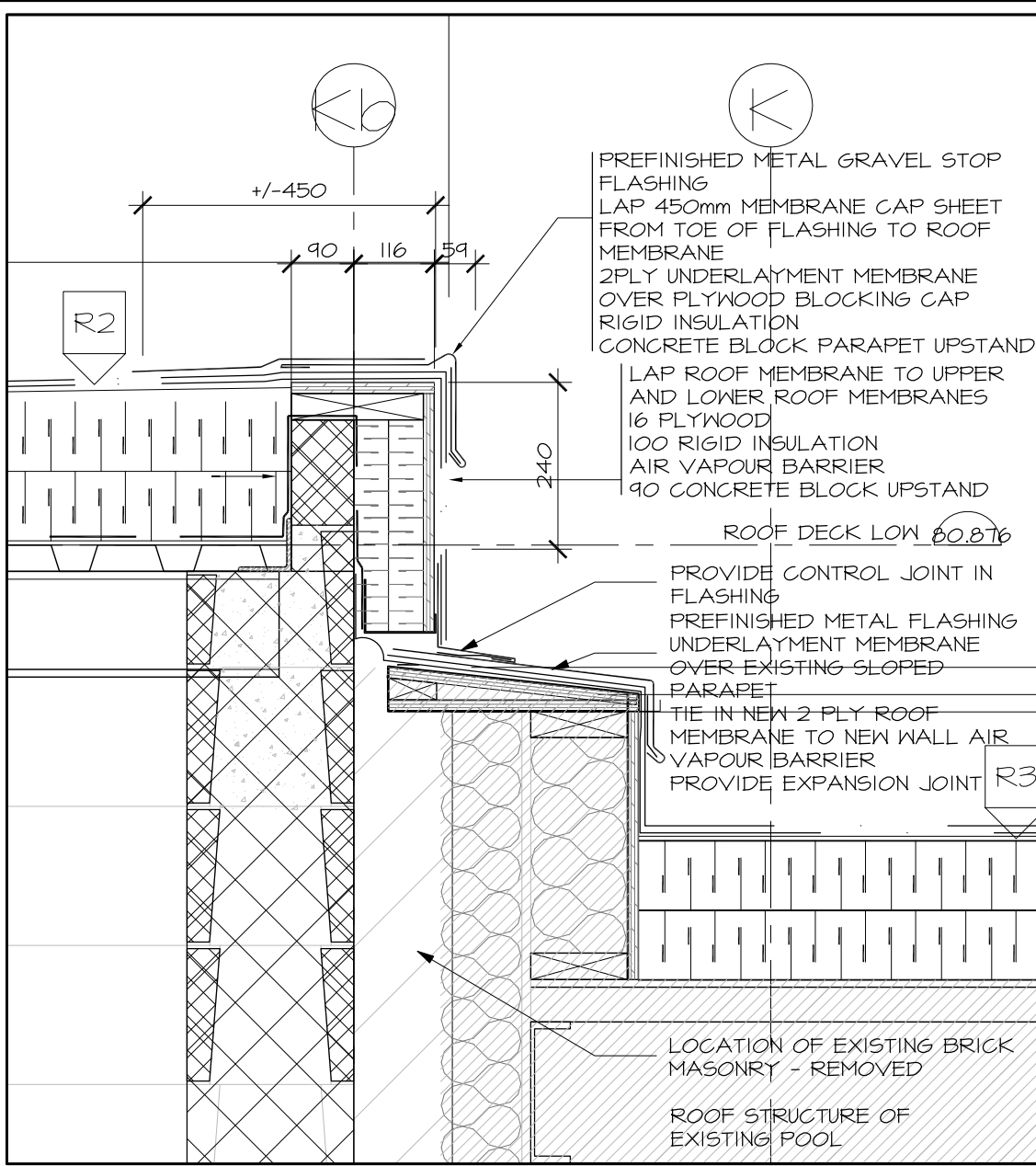


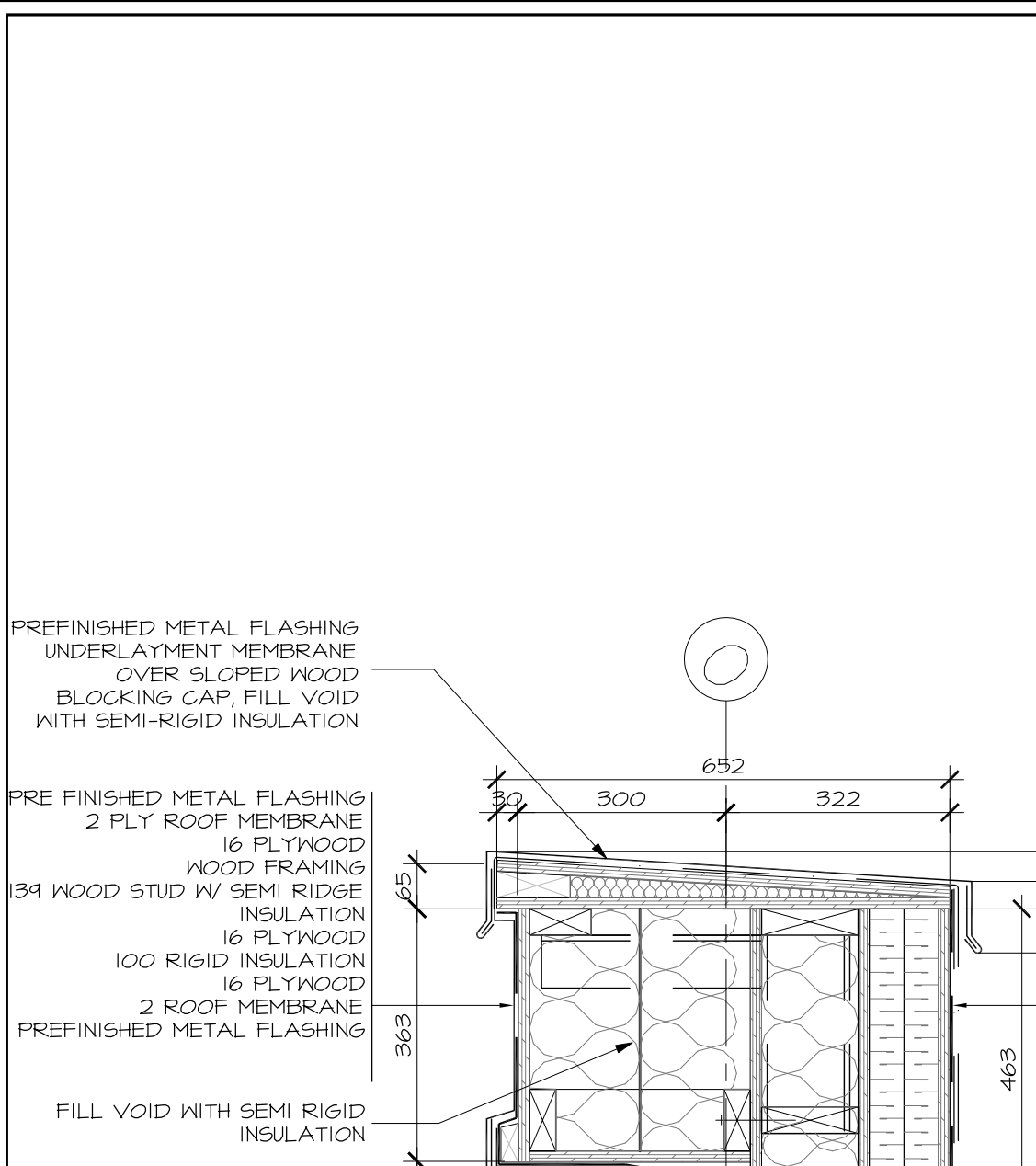
7 SECTION DETAIL AT GRID 6b
A5.01 SCALE 1:10



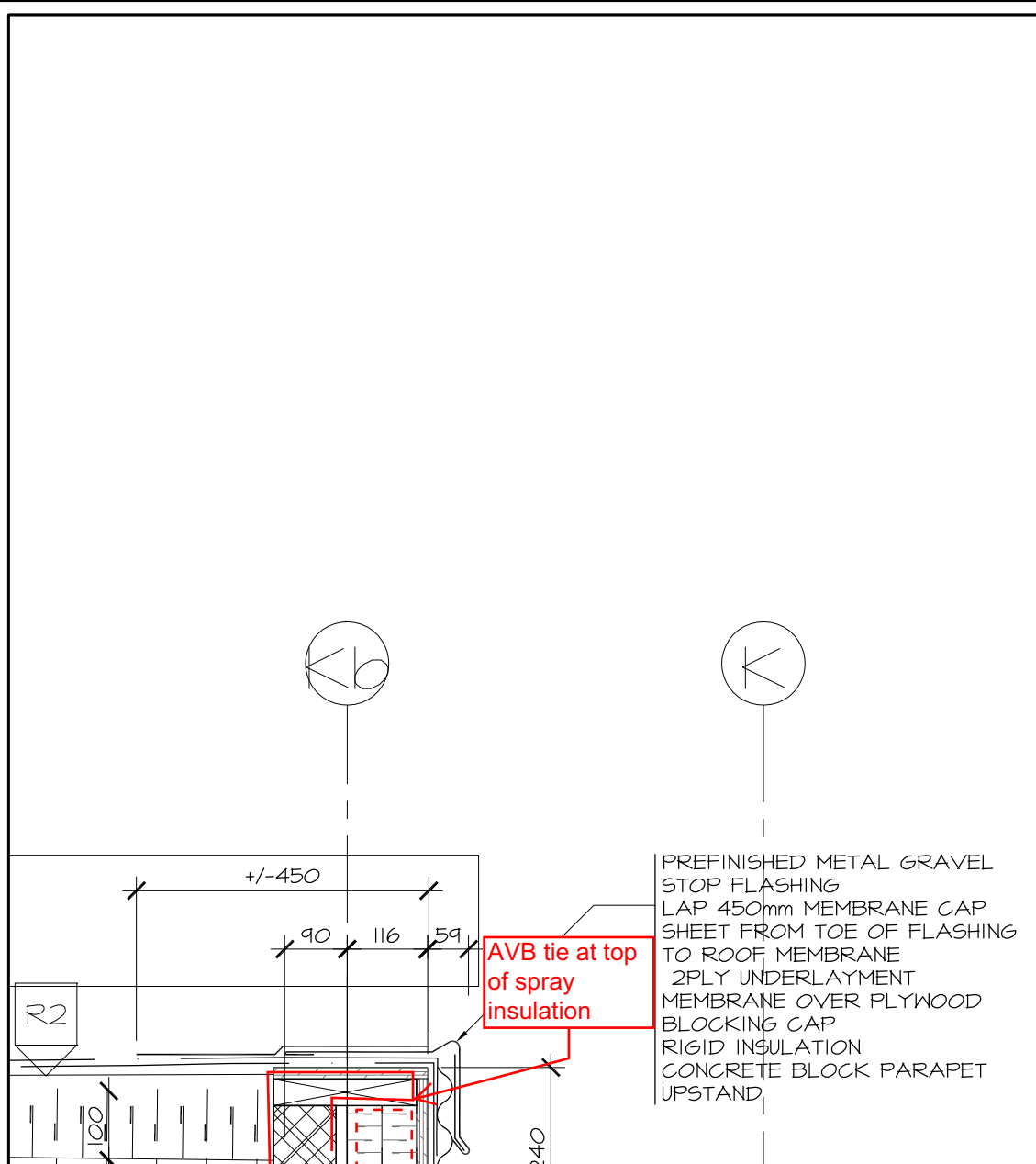
8 SECTION DETAIL AT GRID 6b
A5.01 SCALE 1:10



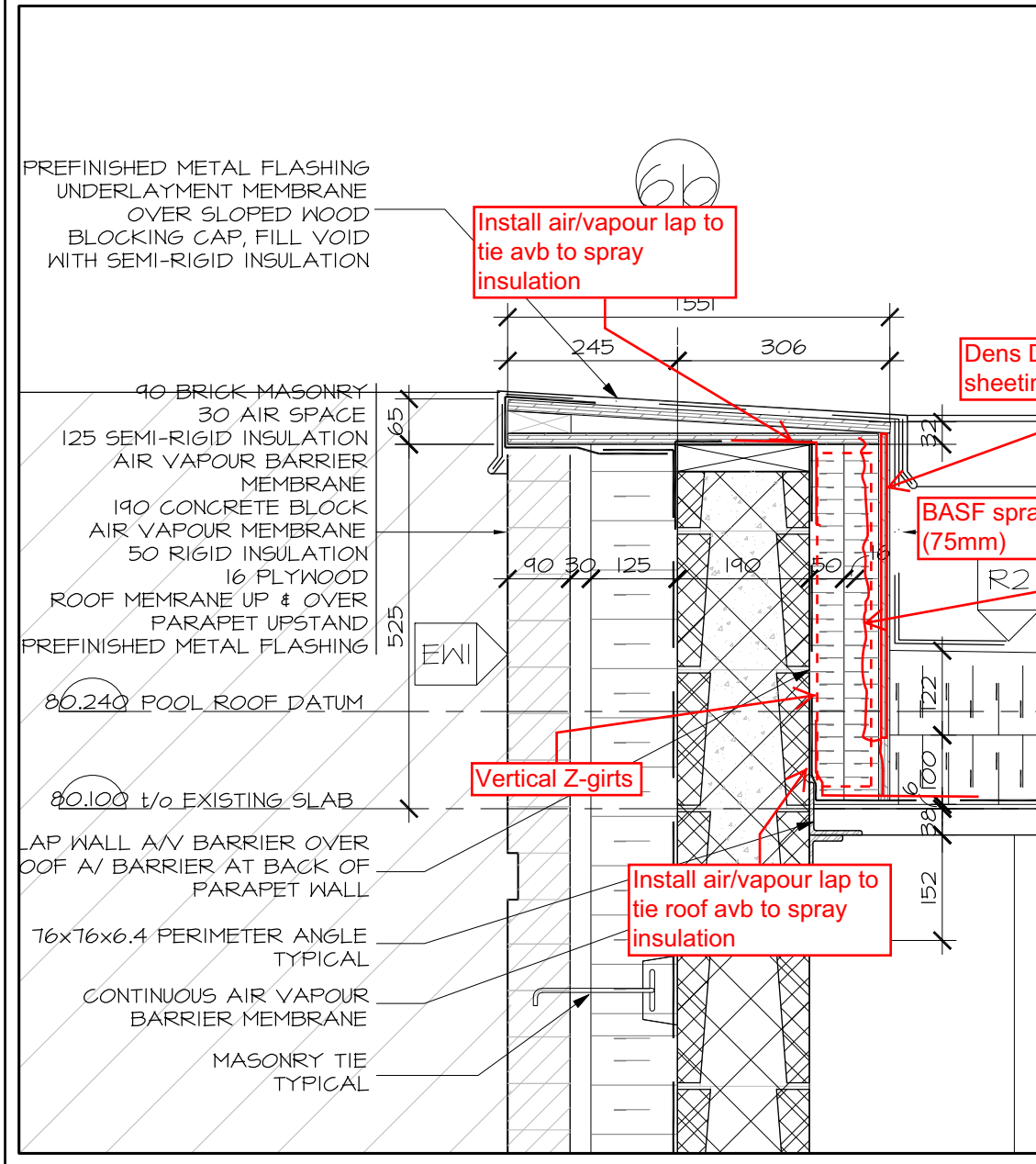
10 SECTION DETAIL AT GRID Kb - EXISTING
A5.01 SCALE 1:10



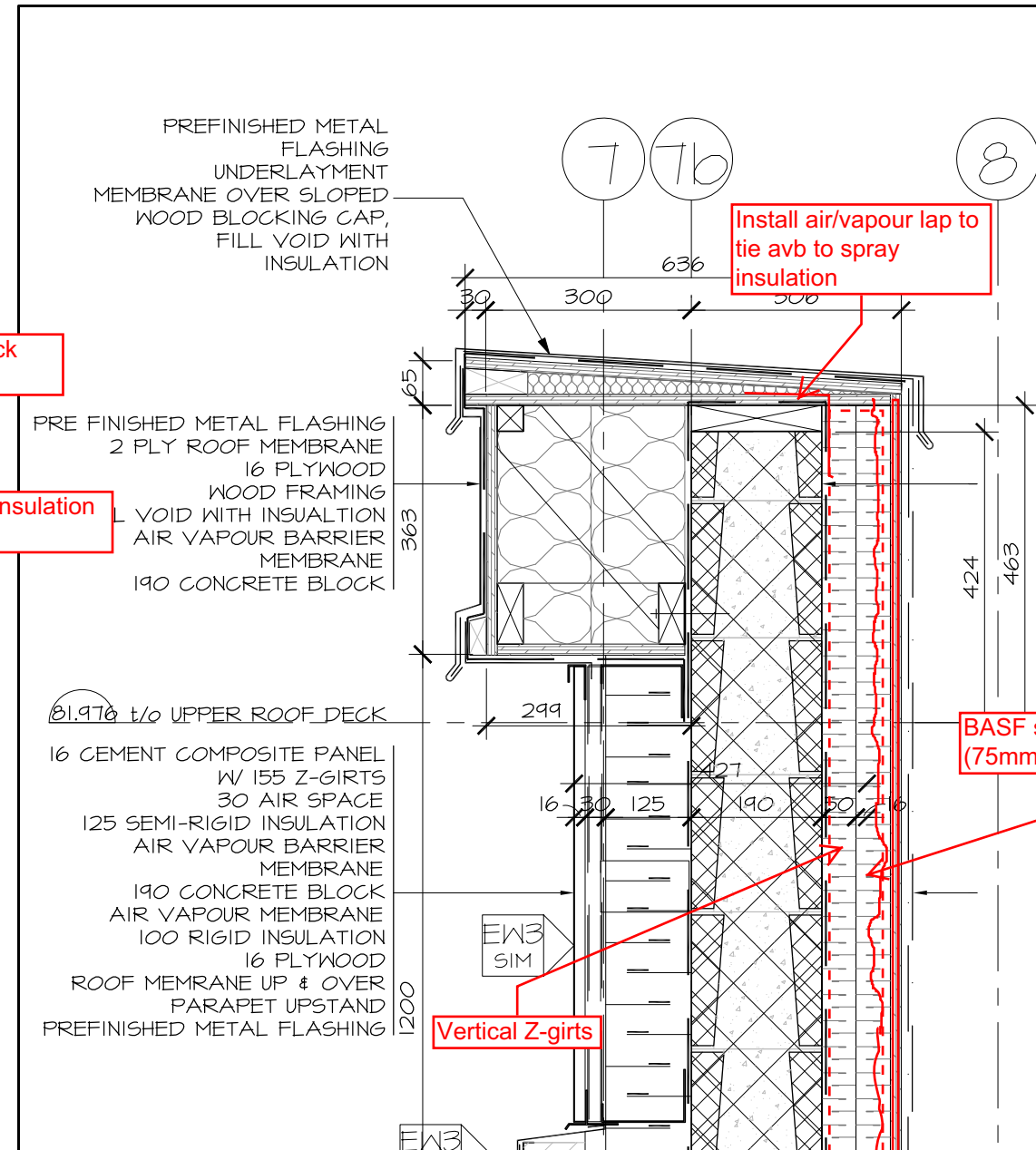
9 SECTION DETAIL AT GRID O - PARAPET
A5.01 SCALE 1:10



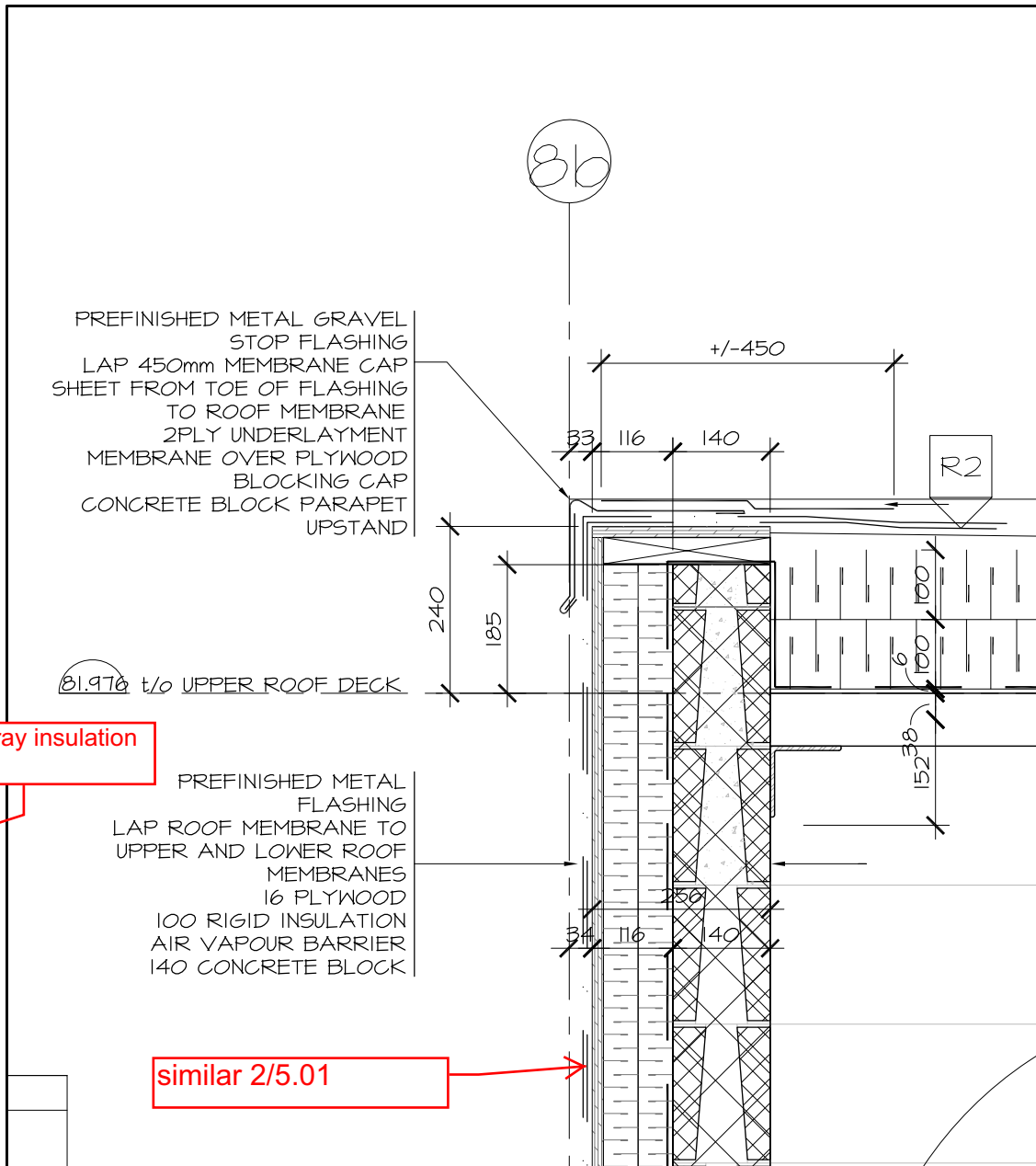
5 SECTION DETAIL AT GRID 6b
A5.01 SCALE 1:10



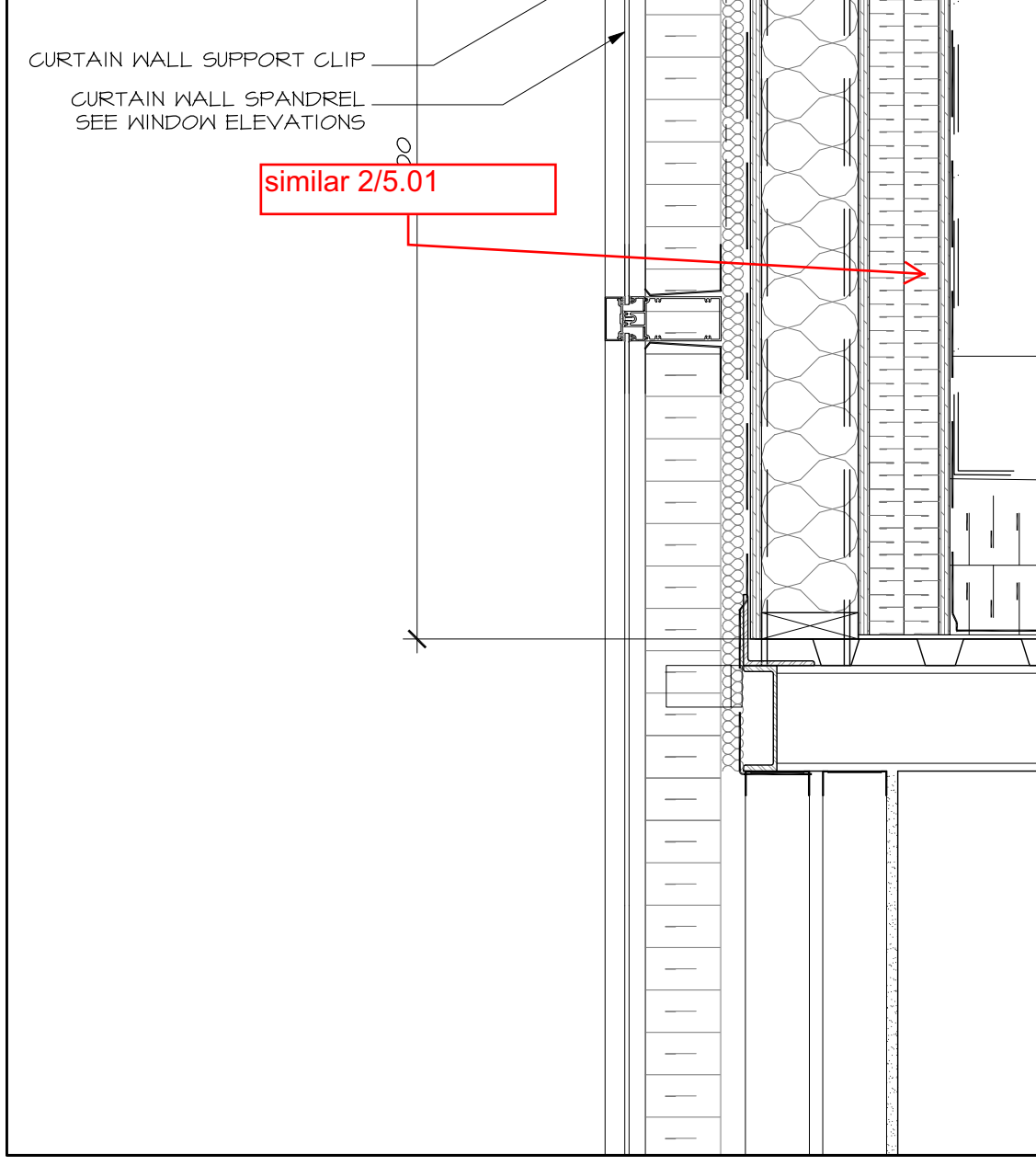
6 SECTION DETAIL AT GRID 6b - PARAPET
A5.01 SCALE 1:10



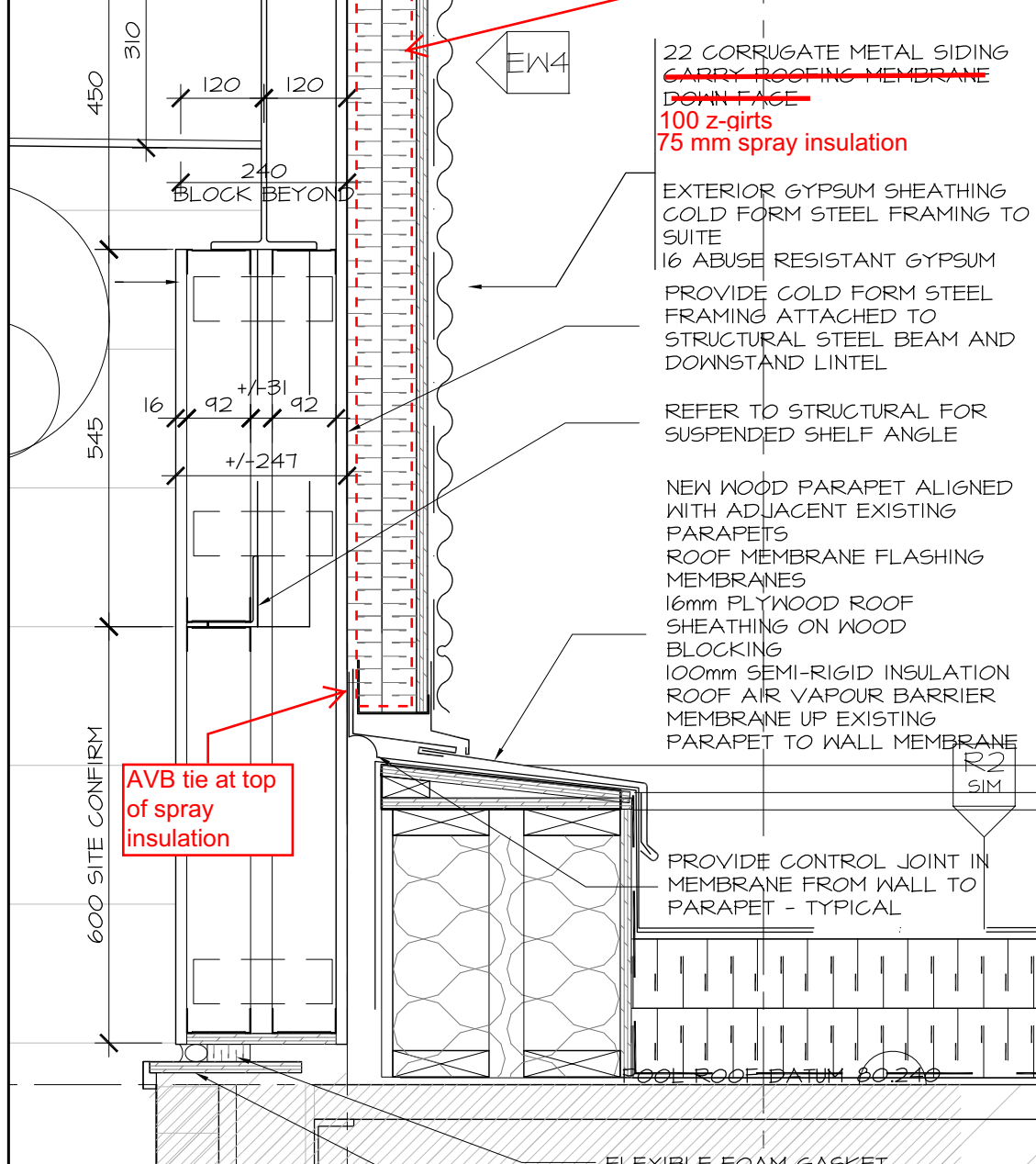
2 SECTION DETAIL AT GRID 7b - PARAPET
A5.01 SCALE 1:10



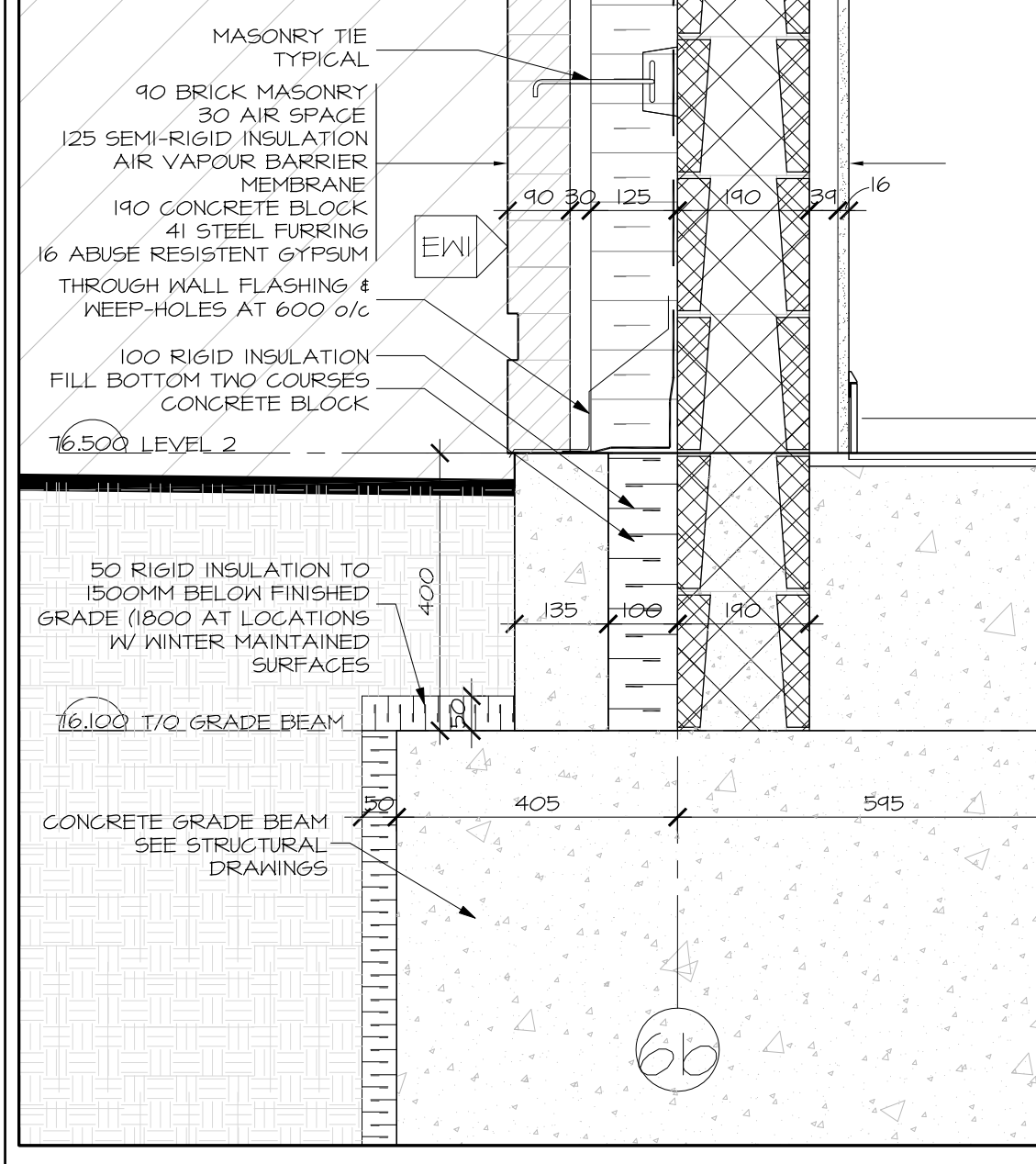
3 SECTION DETAIL AT GRID 8b - PARAPET
A5.01 SCALE 1:10



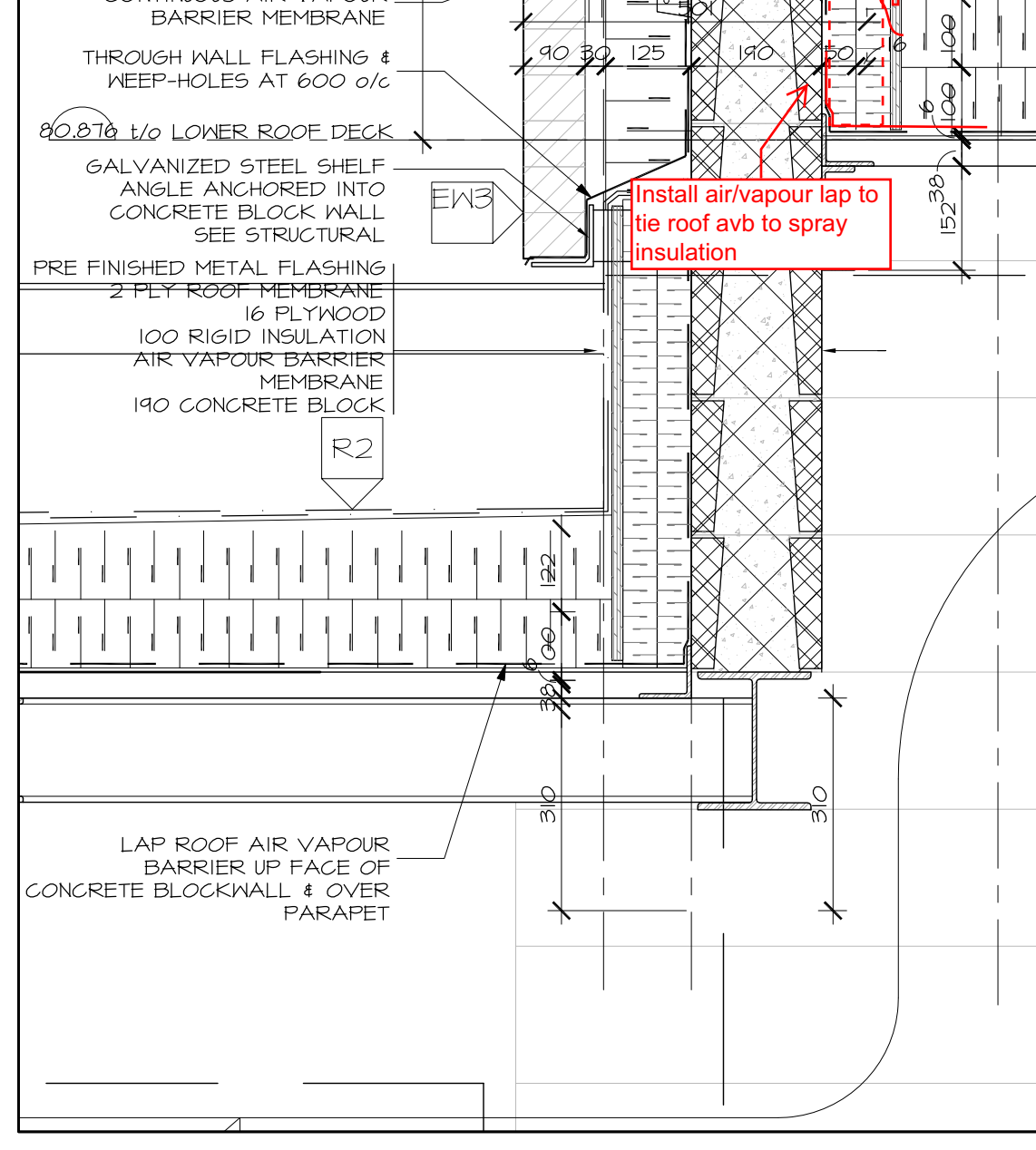
4 SECTION DETAIL AT GRID 12 - PARAPET
A5.01 SCALE 1:10



SECTION DETAIL AT GRID 6b
A5.01 SCALE 1:10



1 SECTION DETAIL AT GRID 6b - FOUNDATION
A5.01 SCALE 1:10



SECTION DETAIL AT GRID 7b - PARAPET
A5.01 SCALE 1:10



Hobin Architecture Incorporated
63 Patricia Street
Ottawa, Ontario
Canada K1S 3K7
T: 613 238-7200
F: 613 235-2055
E: mail@hobinarc.com
hobinarc.com
HOBIN ARCHITECTURE

NO.	DESCRIPTION	DATE	BY
6	ISSUED FOR INFORMATION (S407)	2018/10/03	DV
5	ISSUED FOR INFORMATION (S406)	2018/09/18	DV
4	ISSUED FOR INFORMATION (S405)	2018/09/14	DV
3	REBUSED FOR CONSTRUCTION	2017/09/03	DV
2	ISSUED FOR CONSTRUCTION	2017/09/03	DV
1	ISSUED FOR PERMIT	2017/02/05	DV

DESIGNED BY / CONÇU PAR	CHECKED BY / VÉRIFIÉ PAR
DV	

ARCHITECT / ARCHITECTE	CONSULTANT / EXPERT-CONSEIL

PROJECT / LOCATION / PROJET / ENDROIT
DOVERCOURT
PHASE 2
ADDITION & RENOVATION
411 DOVERCOURT
OTTAWA, ONTARIO
DRAWING / DESSIN
SECTIONS
SECTION DETAILS