

THESE DESIGN DOCUMENTS ARE PREPARED SOLELY FOR THE USE BY THE PARTY WITH WHOM THE DESIGN PROFESSIONAL HAS AGREED TO PROVIDE PROFESSIONAL SERVICES. NO REPRESENTATION OR WARRANTY IS MADE BY THE DESIGN PROFESSIONAL TO ANY PARTY WITH WHOM THE DESIGN PROFESSIONAL HAS NOT ENTERED INTO A CONTRACT.

THE PAPER COPY OF THE DRAWINGS ISSUED FOR BUILDING PERMIT AND/OR TENDER WILL TAKE PRECEDENCE OVER ELECTRONIC COPIES.



5.	ISSUED FOR TENDER	JAN 17/18
4.	ISSUED FOR BUILDING PERMIT	DEC 04/18
3.	ISSUED FOR COORDINATION	NOV 08/18
2.	ISSUED FOR COORDINATION	SEP 04/18
1.	ISSUED FOR PROGRESS REVIEW	AUG 10/18

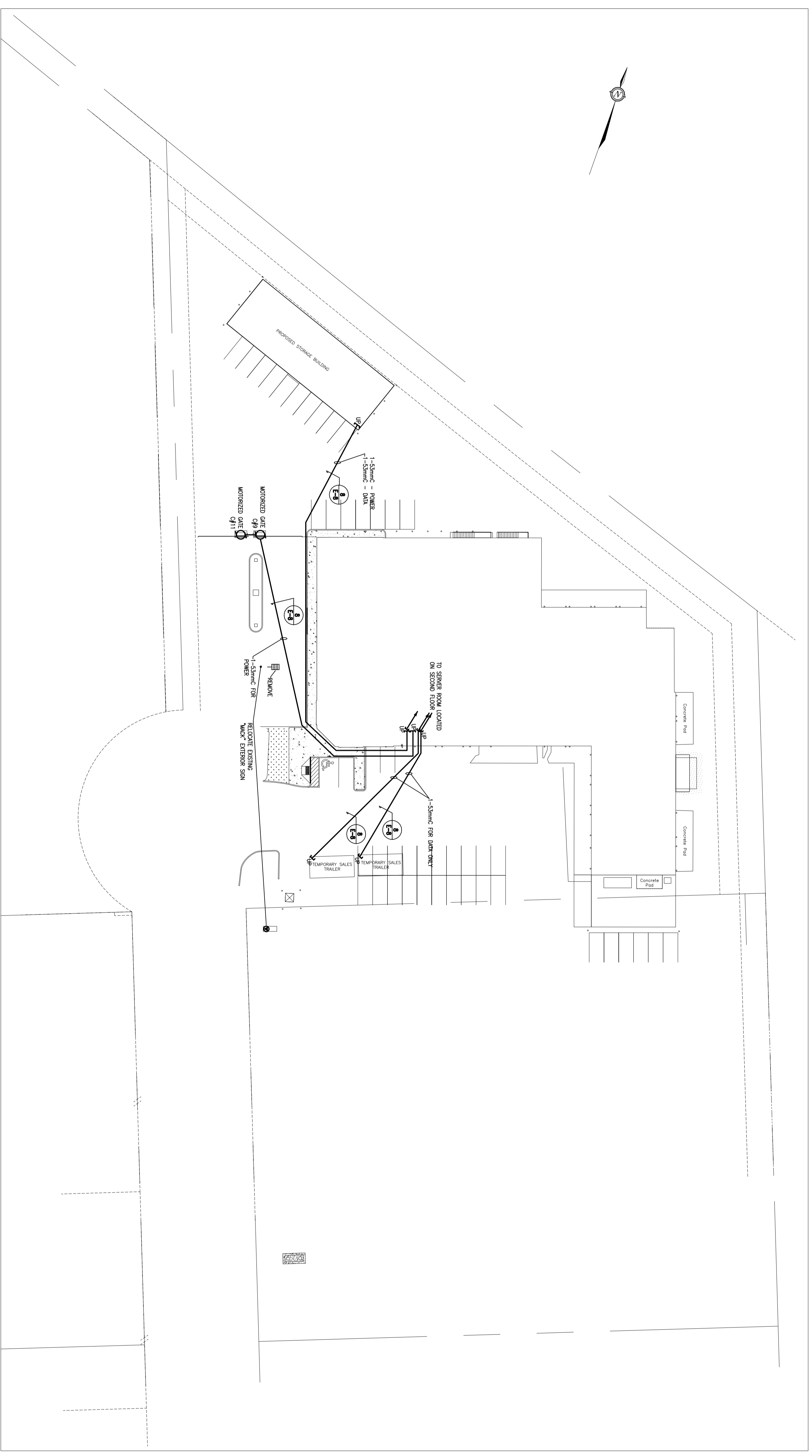
**MCKEE ENGINEERING**  
 R.L. MCKEE ENGINEERING LTD.  
 1755 Woodward Drive  
 Ottawa, ON K2C 0P9  
 TEL: (613) 723-8884  
 FAX: (613) 723-8884  
 WWW.MCKEEENGINEERING.COM

PROJECT:  
 SURGENOR TRUCK CENTRE  
 RENOVATION  
 1571 LIVERPOOL COURT  
 OTTAWA, ONTARIO

DRAWING:  
 ELECTRICAL:  
 SITE PLAN

DATE: AUGUST 2018
DESIGNED BY: J.F.B
DRAWN BY: J.F.B
CHECKED BY: B.I.
SCALE: 1:300

NO. DWGS: 12  
 PROJECT No. 18165  
 DRAWING No. ES-1



1 SITE PLAN  
 ES-1

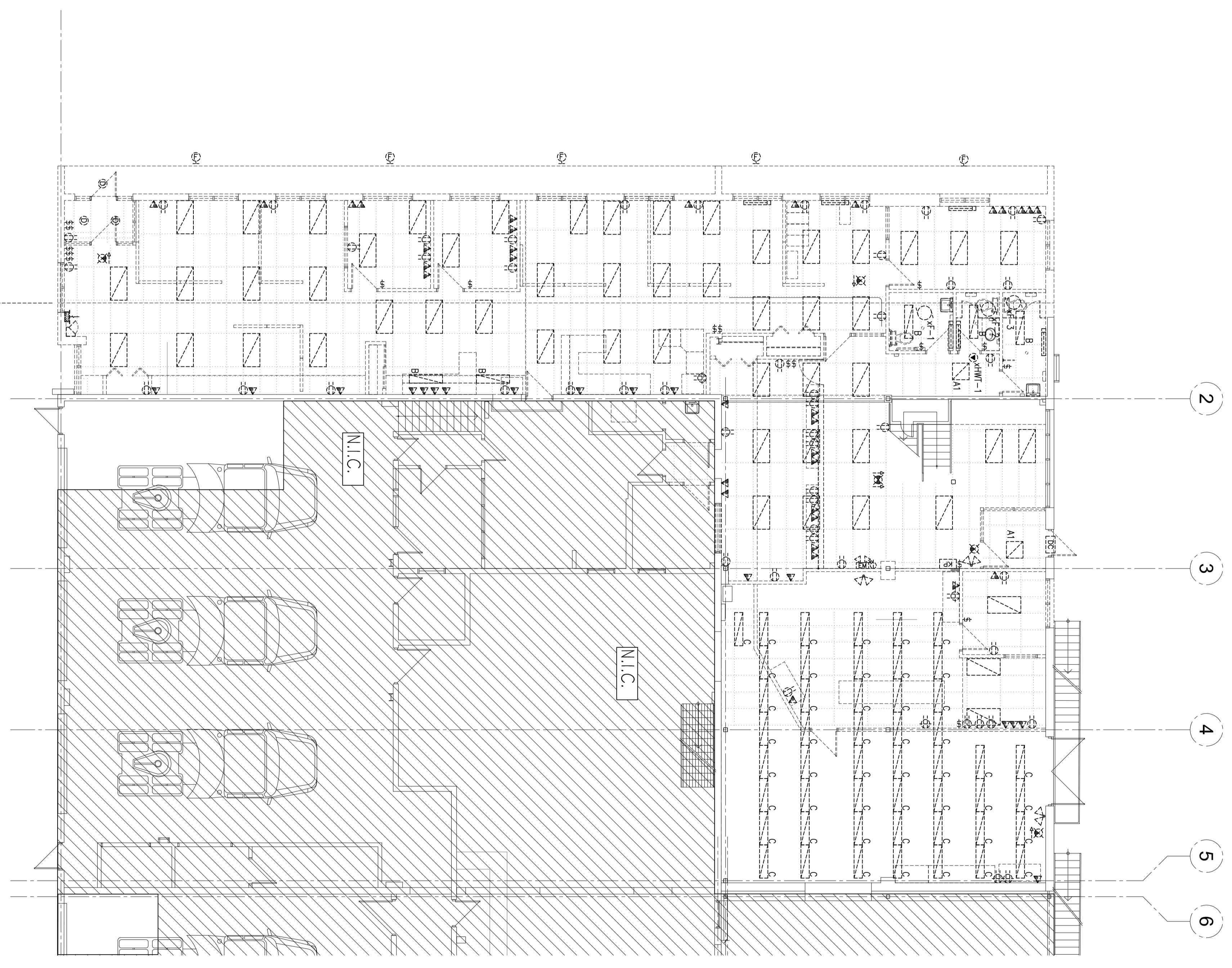
THESE DESIGN DOCUMENTS ARE PREPARED SOLELY FOR THE USE BY THE PARTY WITH WHOM THE DESIGN PROFESSIONAL HAS AGREED TO PROVIDE PROFESSIONAL SERVICES. NO REPRESENTATION OR WARRANTY IS MADE BY THE DESIGN PROFESSIONAL TO ANY PARTY WITH WHOM THE DESIGN PROFESSIONAL HAS NOT ENTERED INTO A CONTRACT.

THE PAPER COPY OF THE DRAWINGS ISSUED FOR BUILDING PERMIT AND/OR TENDER WILL TAKE PRECEDENCE OVER ANY ELECTRONIC VERSIONS.



**GENERAL NOTES**

1. ALL LIGHTING FIXTURES ARE TYPE "A" 100W.



1  
ED-1  
GROUND FLOOR – DEMOLITION

REVISION No.	DESCRIPTION	DATE
1.	ISSUED FOR PROGRESS REVIEW	AUG 10/18
2.	ISSUED FOR COORDINATION	SEP 04/18
3.	ISSUED FOR COORDINATION	NOV 08/18
4.	ISSUED FOR BUILDING PERMIT	DEC 04/18
5.	ISSUED FOR TENDER	JAN 17/19

**MCKEE ENGINEERING**  
R.L. MCKEE ENGINEERING LTD.  
1755 Woodbine Drive  
Ottawa, ON K2C 0P9  
Tel: (613) 723-8884  
Fax: (613) 723-8884  
www.mckeeengineering.ca

**PROJECT:**  
SURGENOR TRUCK CENTRE  
RENOVATION  
1571 LIVERPOOL COURT  
OTTAWA, ONTARIO

**DRAWING:**  
ELECTRICAL:  
GROUND FLOOR – DEMOLITION

DATE: AUGUST 2018  
DESIGNED BY: J.F.B.  
DRAWN BY: J.F.B.  
CHECKED BY: B.I.  
SCALE: 1:100

No. DWGS: 12  
PROJECT No. 18165  
DRAWING No. ED-1

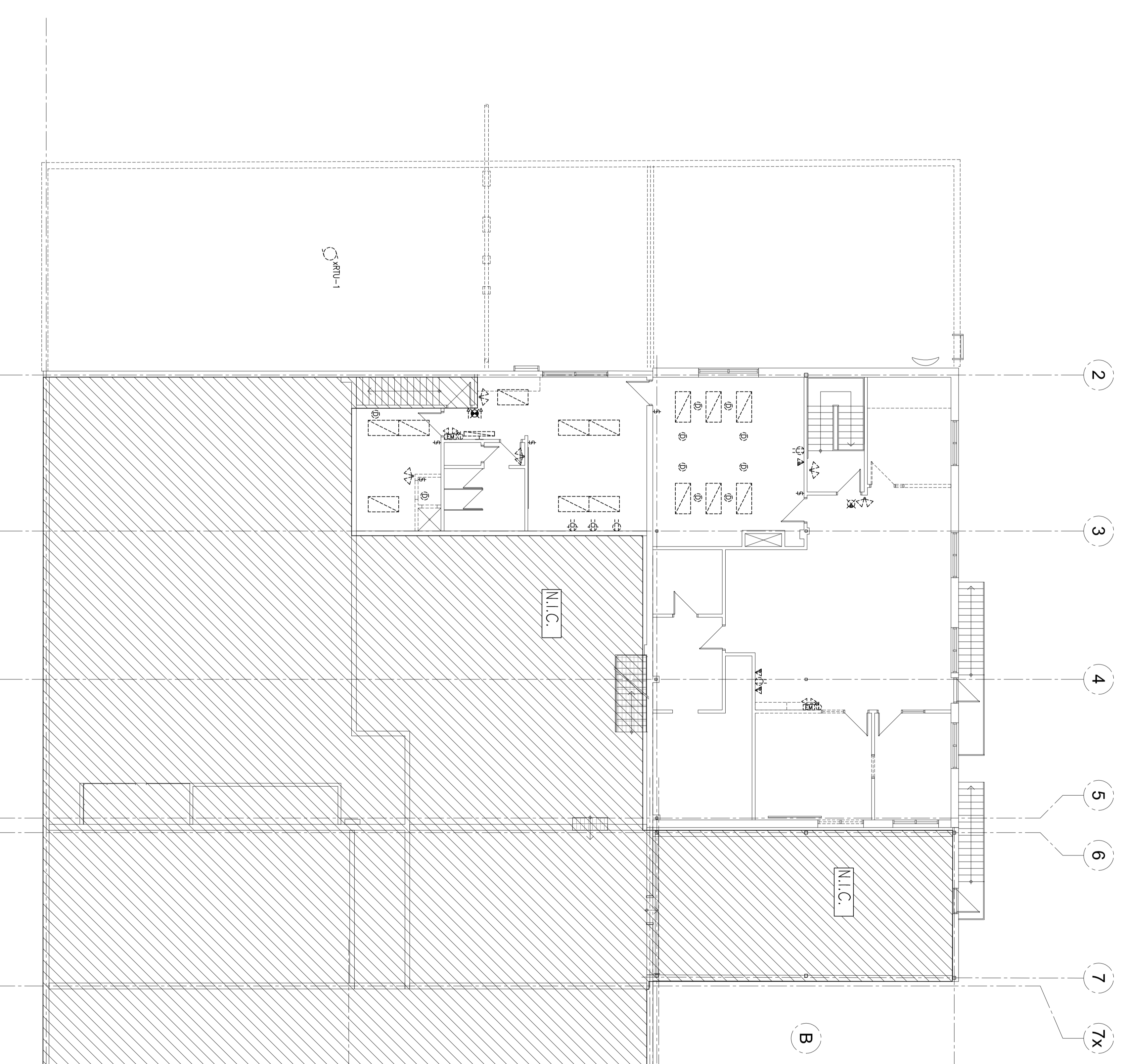
THESE DESIGN DOCUMENTS ARE PREPARED SOLELY FOR THE USE BY THE PARTY WITH WHOM THE DESIGN PROFESSIONAL HAS AGREED TO CONTRACT. ANY OTHER USE OF THESE DOCUMENTS WITHOUT THE WRITTEN CONSENT OF THE DESIGN PROFESSIONAL IS STRICTLY PROHIBITED. THE DESIGN PROFESSIONAL SHALL NOT BE RESPONSIBLE FOR ANY DAMAGE TO ANY PARTY WITH WHOM THE DESIGN PROFESSIONAL HAS NOT ENTERED INTO A CONTRACT.

THE PAPER COPY OF THE DRAWINGS ISSUED FOR BUILDING PERMIT AND/OR TENDER WILL TAKE PRECEDENCE OVER ANY ELECTRONIC VERSIONS.



**GENERAL NOTES**

1. ALL LIGHTING FIXTURES ARE TYPE "A" U.O.N.



1 SECOND FLOOR – DEMOLITION  
ED-2

NO.	DESCRIPTION	DATE
1.	ISSUED FOR PROGRESS REVIEW	AUG 10/18
2.	ISSUED FOR COORDINATION	SEP 04/18
3.	ISSUED FOR COORDINATION	NOV 08/18
4.	ISSUED FOR BUILDING PERMIT	DEC 04/18
5.	ISSUED FOR TENDER	JAN 17/19

**MCKEE ENGINEERING**  
R.L. MCKEE ENGINEERING LTD.  
1755 Woodward Drive  
Ottawa, ON K2C 0P9  
Tel: (613) 723-8884  
Fax: (613) 723-8884  
www.mckeeengineering.ca

**PROJECT:**  
SURGENOR TRUCK CENTRE  
RENOVATION  
1571 LIVERPOOL COURT  
OTTAWA, ONTARIO

**DRAWING:**  
ELECTRICAL:  
SECOND FLOOR – DEMOLITION

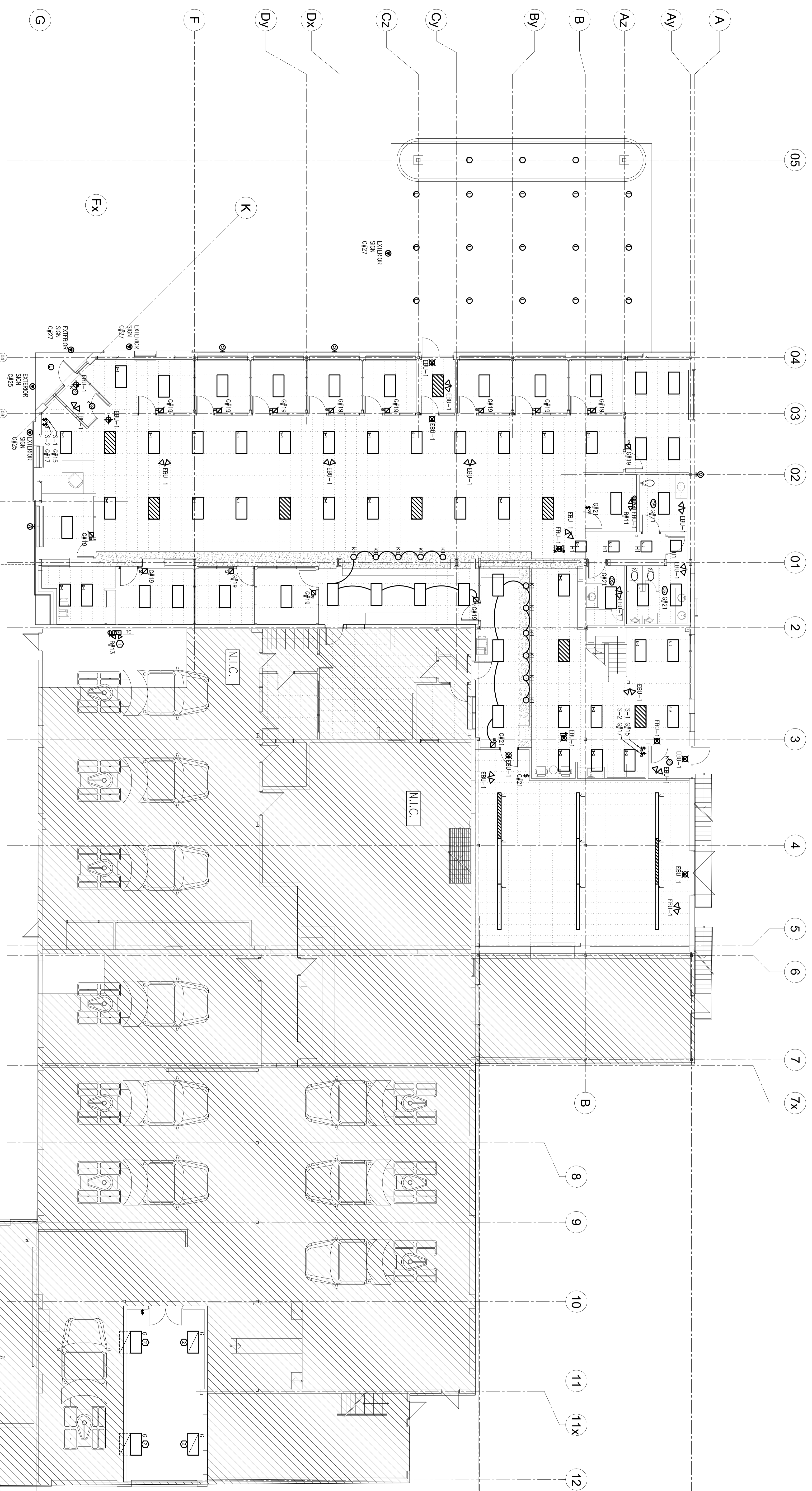
DATE: AUGUST 2018  
DESIGNED BY: J.F.B.  
DRAWN BY: J.F.B.  
CHECKED BY: B.I.  
SCALE: 1:100

NO. DWGS: 12  
PROJECT NO: 18165  
DRAWING NO: ED-2



THESE DESIGN DOCUMENTS ARE PREPARED SOLELY FOR THE USE BY THE PARTY WITH WHOM THE DESIGN PROFESSIONAL HAS AGREED TO PROVIDE PROFESSIONAL SERVICES. NO DESIGN OR CONSTRUCTION SHALL BE UNDERTAKEN OR CONSTRUCTION SHALL BE UNDERTAKEN BY THE DESIGN PROFESSIONAL TO ANY PARTY WITH WHOM THE DESIGN PROFESSIONAL HAS NOT ENTERED INTO A CONTRACT.

THE PAPER COPY OF THE DRAWINGS ISSUED FOR BUILDING PERMIT AND/OR OTHER WILL TAKE PRECEDENCE OVER ANY ELECTRONIC COPIES.



1 LIGHTING  
E-2

**GENERAL NOTES**

1. ALL LIGHTING FIXTURES ARE TYPE "H" U/LON.
- DRAWING NOTES**
1. PROVIDE NEW 36W EBU AND CONNECT ALL EXISTING REMOTE HEADS AFFECTED BY EBU REMOVALS ON GROUND AND SECOND FLOOR TO NEW EBU WITH SERVICE CHANGE.
  2. ADJUST HEIGHT OF SUSPENDED FIXTURES SUCH THAT FIXTURES WILL NOT INTERFERE WITH GARAGE DOOR WHEN OPENED.

NO.	DESCRIPTION	DATE
1.	ISSUED FOR PROGRESS REVIEW	AUG 10/18
2.	ISSUED FOR COORDINATION	SEP 04/18
3.	ISSUED FOR COORDINATION	NOV 08/18
4.	ISSUED FOR BUILDING PERMIT	DEC 04/18
5.	ISSUED FOR TENDER	JAN 17/19

**MCKEE ENGINEERING**  
R.L. MCKEE ENGINEERING LTD.  
1755 Woodward Drive  
Oshawa, ON K2C 0P9  
Tel: (905) 723-8884  
Fax: (905) 723-8884  
www.mckeeengineering.com

**PROJECT:**  
SURGENOR TRUCK CENTRE  
RENOVATION  
1571 LIVERPOOL COURT  
OTTAWA, ONTARIO

**DRAWING:**  
ELECTRICAL:  
GROUND FLOOR - LIGHTING

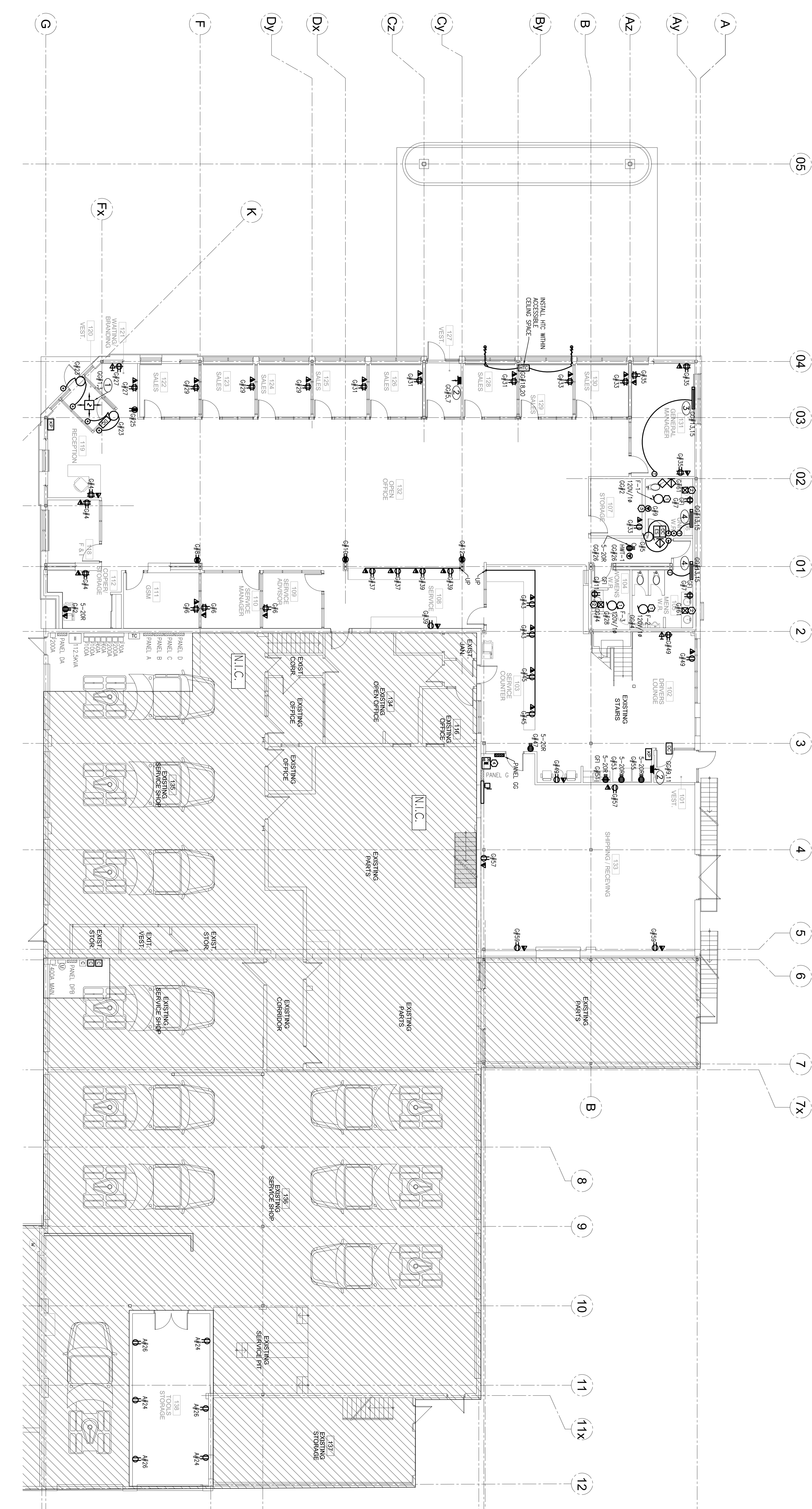
DATE: AUGUST 2018  
DESIGNED BY: J.F.B.  
DRAWN BY: J.F.B.  
CHECKED BY: B.I.

NO. DWGS: 12  
SCALE: 1:100  
DRAWING NO.

PROJECT NO:  
18165  
**E-2**

THESE DESIGN DOCUMENTS ARE PREPARED SOLELY FOR THE USE BY THE PARTY WITH WHOM THE DESIGN PROFESSIONAL HAS THE CONTRACT AND/OR ORDER. THE DESIGN PROFESSIONAL HAS NO LIABILITY TO ANY OTHER PARTY WITH WHOM THE DESIGN PROFESSIONAL HAS NOT ENTERED INTO A CONTRACT.

THE PAPER COPY OF THE DRAWINGS ISSUED FOR BUILDING PERMIT AND/OR ORDER WILL TAKE PRECEDENCE OVER ANY ELECTRONIC COPY.



1 POWER AND SYSTEMS  
E-3

- DRAWING NOTES**
- ⊗ INTERLOCK FAN WITH OCCUPANCY SENSOR WITHIN ROOM SUCH THAT FAN TURNS ON IF ROOM IS OCCUPIED. PROVIDE RELAYS AND POWER PACKS TO SUIT.
  - ⊗ PROVIDE JUNCTION BOX IN CEILING SPACE C/W 120V/15A CIRCUIT OTHERS.
  - ⊗ PROVIDE NEW 120V/15A 20A SENSOR OPERATED W/40 AMP HAND OPER. EQUAL TO MCKEE'S SANITOLK. SHALL BE CAST IRON.
  - ⊗ PROVIDE ANGLE IRON SUPPORT STRUCTURE AND MOUNT NEW 200A BOLT TO FLOOR AND WALLS TO SUIT SEISMIC REQUIREMENTS.

NO.	DESCRIPTION	DATE
1.	ISSUED FOR PROGRESS REVIEW	AUG 10/18
2.		
3.		
4.		
5.		

**MCKEE ENGINEERING**  
R.L. MCKEE  
1755 Woodward Drive  
Ottawa, ON K2C 0P9  
Tel: (613) 723-8884  
Fax: (613) 723-8884  
www.mckeeengineering.com

**PROJECT:**  
SURGENOR TRUCK CENTRE  
RENOVATION  
1571 LIVERPOOL COURT  
OTTAWA, ONTARIO

**DRAWING:**  
ELECTRICAL:  
GROUND FLOOR – POWER  
AND SYSTEMS

DATE: AUGUST 2018	DESIGNED BY: J.F.B.
SCALE: 1:100	CHECKED BY: B.I.
NO. DWGS: 12	DRAWING NO. E-3
PROJECT NO. 18165	

THESE DESIGN DOCUMENTS ARE PREPARED SOLELY FOR THE USE BY THE PARTY WITH WHOM THE DESIGN PROFESSIONAL HAS AGREED TO PROVIDE PROFESSIONAL SERVICES. NO REPRESENTATION OR WARRANTY IS MADE BY THE DESIGN PROFESSIONAL TO ANY PARTY WITH WHOM THE DESIGN PROFESSIONAL HAS NOT ENTERED INTO A CONTRACT.

THE PAPER COPY OF THE DRAWINGS ISSUED FOR BUILDING PERMIT AND/OR OTHER WILL MAKE REFERENCE OVER DESIGNATION CHANGES.



5	ISSUED FOR TENDER	JAN 17/18
4	ISSUED FOR BUILDING PERMIT	DEC 04/18
3	ISSUED FOR COORDINATION	NOV 08/18
2	ISSUED FOR COORDINATION	SEP 04/18
1	ISSUED FOR PROGRESS REVIEW	AUG 10/18

**MCKEE ENGINEERING**  
 R.L. MCKEE ENGINEERING LTD.  
 1755 Woodbine Drive  
 Ottawa, ON K2C 0P9  
 TEL: (613) 723-8884  
 FAX: (613) 723-8884  
 WWW.MCKEEENGINEERING.COM

PROJECT:  
 SURGENOR TRUCK CENTRE  
 RENOVATION  
 1571 LIVERPOOL COURT  
 OTTAWA, ONTARIO

DRAWING:  
 ELECTRICAL  
 SECOND FLOOR - LIGHTING

DATE: AUGUST 2018  
 DESIGNED BY: J.F.B.  
 DRAWN BY: J.F.B.  
 CHECKED BY: B.I.

NO. DWGS: 12  
 PROJECT NO: 18165  
 DRAWING NO: E-4



**GENERAL NOTES**  
 1. ALL LIGHTING FIXTURES ARE TYPE "X" U.O.N.





THESE DESIGN DOCUMENTS ARE PREPARED SOLELY FOR THE USE BY THE PARTY WITH WHOM THE DESIGN PROFESSIONAL HAS AGREED TO CONTRACT AND SHALL NOT BE USED FOR ANY OTHER PROJECT WITHOUT THE WRITTEN CONSENT OF THE DESIGN PROFESSIONAL. THE DESIGN PROFESSIONAL SHALL NOT BE RESPONSIBLE FOR ANY DAMAGE TO ANY PARTY WHICH THE DESIGN PROFESSIONAL HAS NOT ENDED INTO A CONTRACT.

THE PAPER COPY OF THE DRAWINGS ISSUED FOR BUILDING PERMIT AND/OR OTHER WILL TAKE PRECEDENCE OVER ANY ELECTRONIC VERSIONS.



5.	ISSUED FOR TENDER	JAN 17/18
4.	ISSUED FOR BUILDING PERMIT	DEC 04/18
3.	ISSUED FOR COORDINATION	NOV 08/18
2.	ISSUED FOR COORDINATION	SEP 04/18
1.	ISSUED FOR PROGRESS REVIEW	AUG 10/18

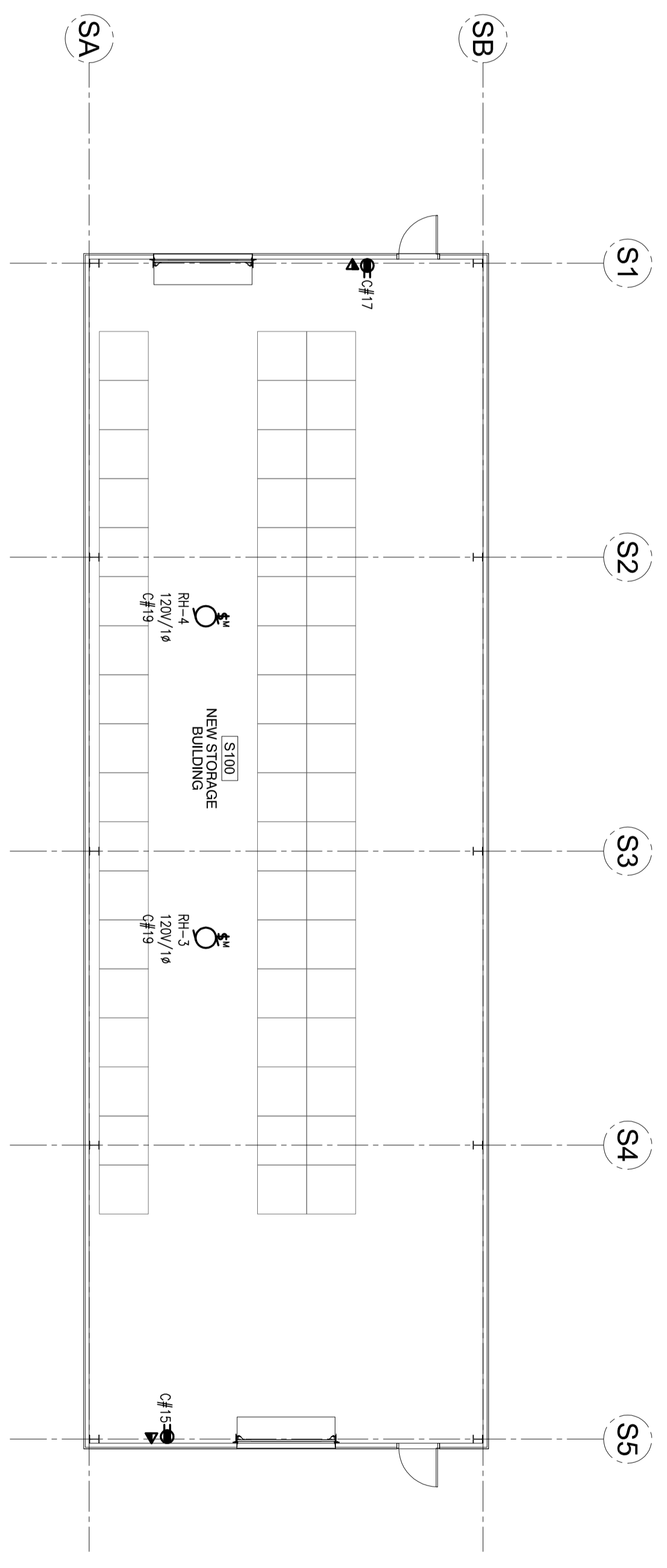
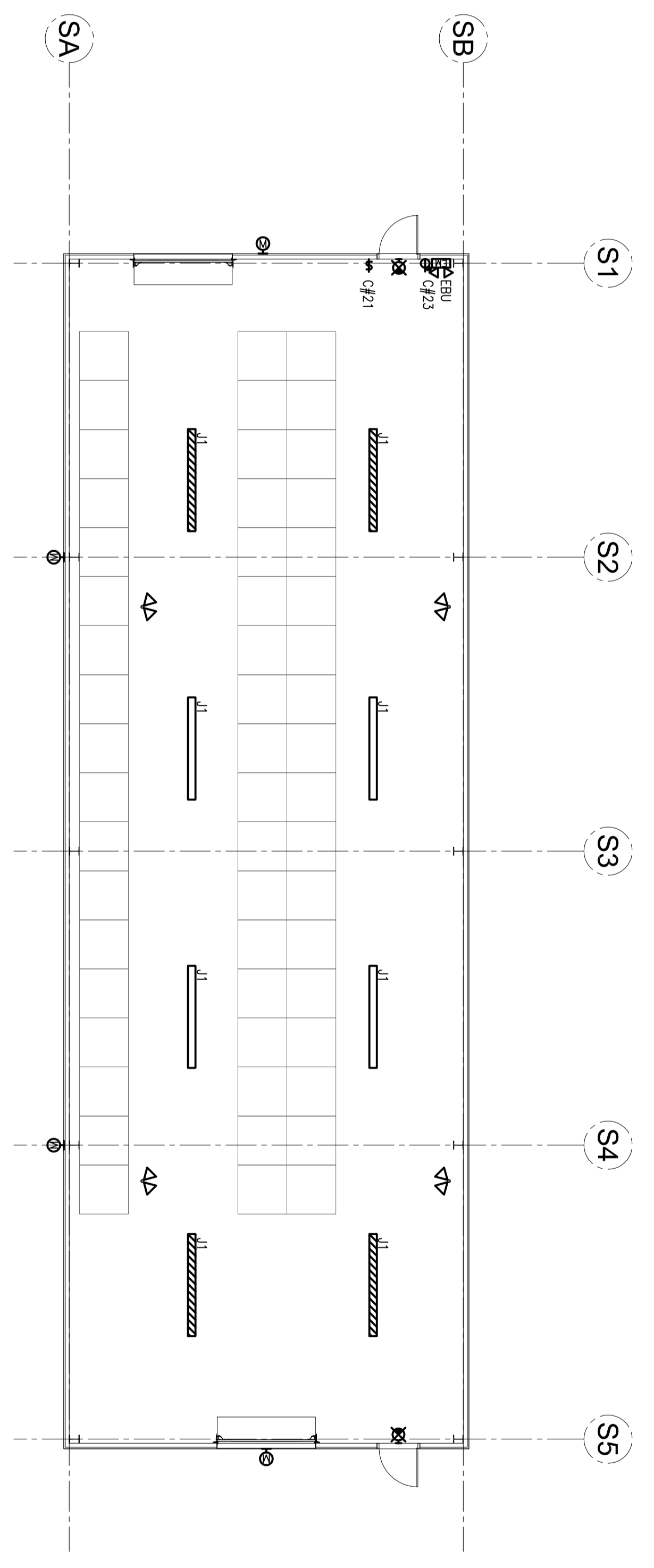
**MCKEE ENGINEERING**  
 R.L. MCKEE  
 ENGINEERING LTD.  
 1755 Woodward Drive  
 Ottawa, ON K2C 0P9  
 TEL: (613) 723-8885  
 FAX: (613) 723-8884  
 WWW.MCKEEENGINEERING.COM

PROJECT:  
 SURGENOR TRUCK CENTRE  
 RENOVATION  
 1571 LIVERPOOL COURT  
 OTTAWA, ONTARIO

DRAWING:  
 ELECTRICAL:  
 STORAGE BUILDING - SYSTEMS

DATE: AUGUST 2018  
 DESIGNED BY: J.F.B.  
 DRAWN BY: J.F.B.  
 CHECKED BY: B.I.

NO. DWGS: 12  
 PROJECT NO: 18165  
 DRAWING NO: E-7  
 SCALE: 1:100



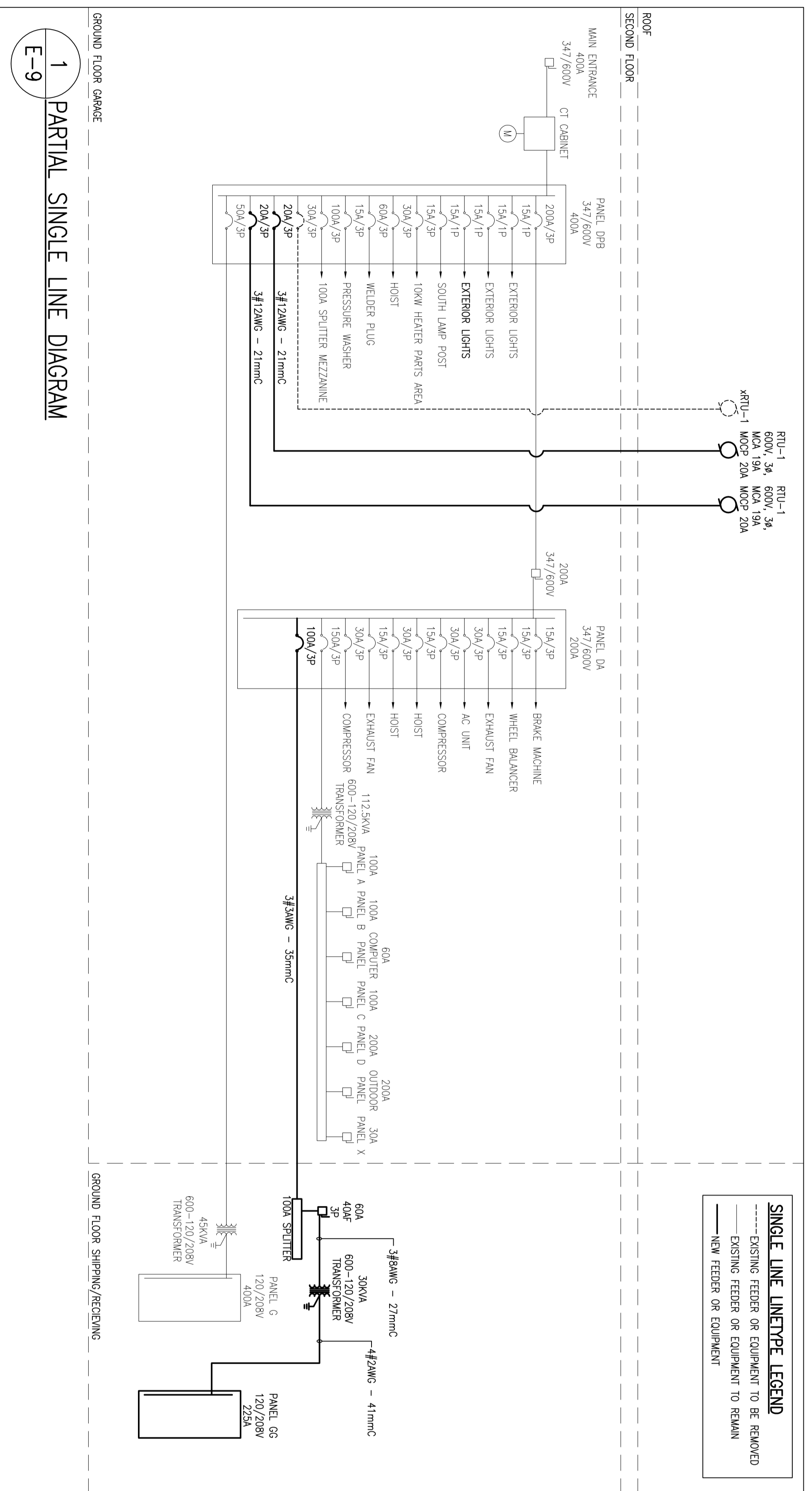
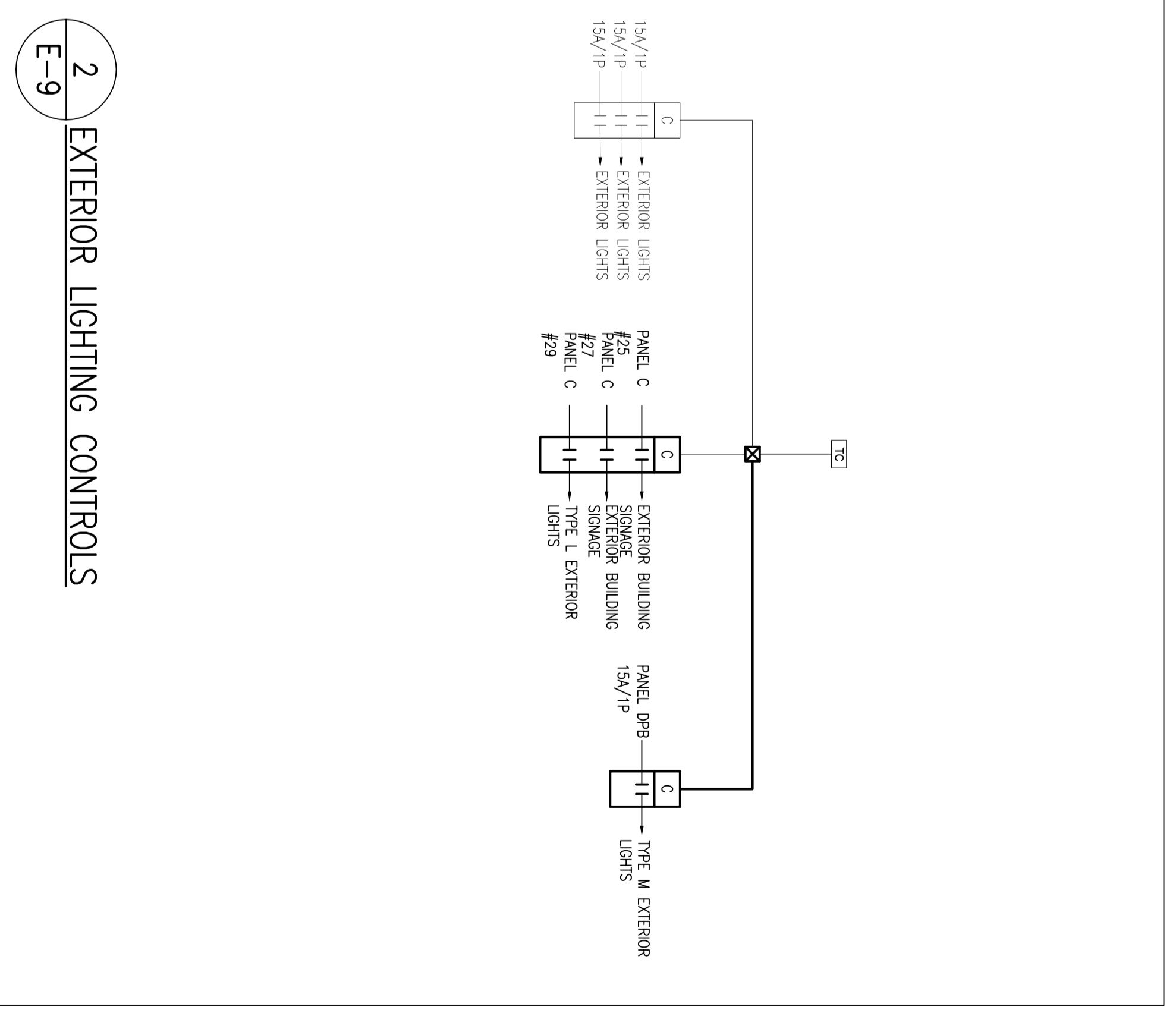


THESE DESIGN DOCUMENTS ARE PREPARED SOLELY FOR THE USE BY THE PARTY WITH WHOM THE DESIGN PROFESSIONAL HAS AGREED TO PROVIDE PROFESSIONAL SERVICES. NO DESIGN PROFESSIONAL LIABILITY SHALL BE ASSUMED BY THE DESIGN PROFESSIONAL TO ANY PARTY WITH WHOM THE DESIGN PROFESSIONAL HAS NOT ENTERED INTO A CONTRACT.

THIS PAPER COPY OF THE DRAWINGS ISSUED FOR BUILDING PERMIT AND/OR RECORD SHALL TAKE PRECEDENCE OVER ANY OTHER VERSIONS.



PROJECT:	SURGENOR TRUCK CENTRE RENOVATION
1571 LIVERPOOL COURT	OTTAWA, ONTARIO
DRAWING:	ELECTRICAL: DETAILS AND PANEL SCHEDULES
DATE:	AUGUST 2018
DESIGNED BY:	J.F.B.
DRAWN BY:	J.F.B.
CHECKED BY:	B.T.
SCALE:	N.T.S.
NO. DIMS:	12
PROJECT NO:	18165
DRAWING NO.:	E-9



PANEL A (EXISTING) SQUARE D		PANEL B (EXISTING) SQUARE D		PANEL C (EXISTING) SQUARE D		PANEL D (EXISTING) SQUARE D	
30 CIRCUITS	120/208V 3PH 4W	30 CIRCUITS	120/208V 3PH 4W	30 CIRCUITS	120/208V 3PH 4W	30 CIRCUITS	120/208V 3PH 4W
DESCRIPTION	BR CIR	DESCRIPTION	BR CIR	DESCRIPTION	BR CIR	DESCRIPTION	BR CIR
1. GARBAGE RECEPTACLES	20 1	1. GARBAGE RECEPTACLES	20 1	1. GARBAGE RECEPTACLES	20 1	1. GARBAGE RECEPTACLES	20 1
2. GARBAGE RECEPTACLES	20 2	2. GARBAGE RECEPTACLES	20 2	2. GARBAGE RECEPTACLES	20 2	2. GARBAGE RECEPTACLES	20 2
3. GARBAGE RECEPTACLES	20 3	3. GARBAGE RECEPTACLES	20 3	3. GARBAGE RECEPTACLES	20 3	3. GARBAGE RECEPTACLES	20 3
4. GARBAGE RECEPTACLES	20 4	4. GARBAGE RECEPTACLES	20 4	4. GARBAGE RECEPTACLES	20 4	4. GARBAGE RECEPTACLES	20 4
5. GARBAGE RECEPTACLES	20 5	5. GARBAGE RECEPTACLES	20 5	5. GARBAGE RECEPTACLES	20 5	5. GARBAGE RECEPTACLES	20 5
6. GARBAGE RECEPTACLES	20 6	6. GARBAGE RECEPTACLES	20 6	6. GARBAGE RECEPTACLES	20 6	6. GARBAGE RECEPTACLES	20 6
7. GARBAGE RECEPTACLES	20 7	7. GARBAGE RECEPTACLES	20 7	7. GARBAGE RECEPTACLES	20 7	7. GARBAGE RECEPTACLES	20 7
8. GARBAGE RECEPTACLES	20 8	8. GARBAGE RECEPTACLES	20 8	8. GARBAGE RECEPTACLES	20 8	8. GARBAGE RECEPTACLES	20 8
9. GARBAGE RECEPTACLES	20 9	9. GARBAGE RECEPTACLES	20 9	9. GARBAGE RECEPTACLES	20 9	9. GARBAGE RECEPTACLES	20 9
10. GARBAGE RECEPTACLES	20 10	10. GARBAGE RECEPTACLES	20 10	10. GARBAGE RECEPTACLES	20 10	10. GARBAGE RECEPTACLES	20 10
11. GARBAGE RECEPTACLES	20 11	11. GARBAGE RECEPTACLES	20 11	11. GARBAGE RECEPTACLES	20 11	11. GARBAGE RECEPTACLES	20 11
12. SPRAY WASH OUTLET	20 12	12. SPRAY WASH OUTLET	20 12	12. SPRAY WASH OUTLET	20 12	12. SPRAY WASH OUTLET	20 12
13. SPRAY WASH OUTLET	20 13	13. SPRAY WASH OUTLET	20 13	13. SPRAY WASH OUTLET	20 13	13. SPRAY WASH OUTLET	20 13
14. SPRAY WASH OUTLET	20 14	14. SPRAY WASH OUTLET	20 14	14. SPRAY WASH OUTLET	20 14	14. SPRAY WASH OUTLET	20 14
15. SPRAY WASH OUTLET	20 15	15. SPRAY WASH OUTLET	20 15	15. SPRAY WASH OUTLET	20 15	15. SPRAY WASH OUTLET	20 15
16. SPRAY WASH OUTLET	20 16	16. SPRAY WASH OUTLET	20 16	16. SPRAY WASH OUTLET	20 16	16. SPRAY WASH OUTLET	20 16
17. SPRAY WASH OUTLET	20 17	17. SPRAY WASH OUTLET	20 17	17. SPRAY WASH OUTLET	20 17	17. SPRAY WASH OUTLET	20 17
18. SPRAY WASH OUTLET	20 18	18. SPRAY WASH OUTLET	20 18	18. SPRAY WASH OUTLET	20 18	18. SPRAY WASH OUTLET	20 18
19. SPRAY WASH OUTLET	20 19	19. SPRAY WASH OUTLET	20 19	19. SPRAY WASH OUTLET	20 19	19. SPRAY WASH OUTLET	20 19
20. SPRAY WASH OUTLET	20 20	20. SPRAY WASH OUTLET	20 20	20. SPRAY WASH OUTLET	20 20	20. SPRAY WASH OUTLET	20 20
21. SPRAY WASH OUTLET	20 21	21. SPRAY WASH OUTLET	20 21	21. SPRAY WASH OUTLET	20 21	21. SPRAY WASH OUTLET	20 21
22. SPRAY WASH OUTLET	20 22	22. SPRAY WASH OUTLET	20 22	22. SPRAY WASH OUTLET	20 22	22. SPRAY WASH OUTLET	20 22
23. SPRAY WASH OUTLET	20 23	23. SPRAY WASH OUTLET	20 23	23. SPRAY WASH OUTLET	20 23	23. SPRAY WASH OUTLET	20 23
24. SPRAY WASH OUTLET	20 24	24. SPRAY WASH OUTLET	20 24	24. SPRAY WASH OUTLET	20 24	24. SPRAY WASH OUTLET	20 24
25. SPRAY WASH OUTLET	20 25	25. SPRAY WASH OUTLET	20 25	25. SPRAY WASH OUTLET	20 25	25. SPRAY WASH OUTLET	20 25
26. SPRAY WASH OUTLET	20 26	26. SPRAY WASH OUTLET	20 26	26. SPRAY WASH OUTLET	20 26	26. SPRAY WASH OUTLET	20 26
27. SPRAY WASH OUTLET	20 27	27. SPRAY WASH OUTLET	20 27	27. SPRAY WASH OUTLET	20 27	27. SPRAY WASH OUTLET	20 27
28. SPRAY WASH OUTLET	20 28	28. SPRAY WASH OUTLET	20 28	28. SPRAY WASH OUTLET	20 28	28. SPRAY WASH OUTLET	20 28
29. SPRAY WASH OUTLET	20 29	29. SPRAY WASH OUTLET	20 29	29. SPRAY WASH OUTLET	20 29	29. SPRAY WASH OUTLET	20 29
30. SPRAY WASH OUTLET	20 30	30. SPRAY WASH OUTLET	20 30	30. SPRAY WASH OUTLET	20 30	30. SPRAY WASH OUTLET	20 30

PANEL E (NEW)		PANEL F (NEW)		PANEL G (NEW)	
42 CIRCUITS	120/208V 3PH 4W	42 CIRCUITS	120/208V 3PH 4W	42 CIRCUITS	120/208V 3PH 4W
DESCRIPTION	BR CIR	DESCRIPTION	BR CIR	DESCRIPTION	BR CIR
1. PHOTOOCOPER 112	20 1	1. PHOTOOCOPER 112	20 1	1. PHOTOOCOPER 112	20 1
2. PHOTOOCOPER 112	20 2	2. PHOTOOCOPER 112	20 2	2. PHOTOOCOPER 112	20 2
3. PHOTOOCOPER 112	20 3	3. PHOTOOCOPER 112	20 3	3. PHOTOOCOPER 112	20 3
4. PHOTOOCOPER 112	20 4	4. PHOTOOCOPER 112	20 4	4. PHOTOOCOPER 112	20 4
5. PHOTOOCOPER 112	20 5	5. PHOTOOCOPER 112	20 5	5. PHOTOOCOPER 112	20 5
6. PHOTOOCOPER 112	20 6	6. PHOTOOCOPER 112	20 6	6. PHOTOOCOPER 112	20 6
7. PHOTOOCOPER 112	20 7	7. PHOTOOCOPER 112	20 7	7. PHOTOOCOPER 112	20 7
8. PHOTOOCOPER 112	20 8	8. PHOTOOCOPER 112	20 8	8. PHOTOOCOPER 112	20 8
9. PHOTOOCOPER 112	20 9	9. PHOTOOCOPER 112	20 9	9. PHOTOOCOPER 112	20 9
10. PHOTOOCOPER 112	20 10	10. PHOTOOCOPER 112	20 10	10. PHOTOOCOPER 112	20 10
11. PHOTOOCOPER 112	20 11	11. PHOTOOCOPER 112	20 11	11. PHOTOOCOPER 112	20 11
12. PHOTOOCOPER 112	20 12	12. PHOTOOCOPER 112	20 12	12. PHOTOOCOPER 112	20 12
13. PHOTOOCOPER 112	20 13	13. PHOTOOCOPER 112	20 13	13. PHOTOOCOPER 112	20 13
14. PHOTOOCOPER 112	20 14	14. PHOTOOCOPER 112	20 14	14. PHOTOOCOPER 112	20 14
15. PHOTOOCOPER 112	20 15	15. PHOTOOCOPER 112	20 15	15. PHOTOOCOPER 112	20 15
16. PHOTOOCOPER 112	20 16	16. PHOTOOCOPER 112	20 16	16. PHOTOOCOPER 112	20 16
17. PHOTOOCOPER 112	20 17	17. PHOTOOCOPER 112	20 17	17. PHOTOOCOPER 112	20 17
18. PHOTOOCOPER 112	20 18	18. PHOTOOCOPER 112	20 18	18. PHOTOOCOPER 112	20 18
19. PHOTOOCOPER 112	20 19	19. PHOTOOCOPER 112	20 19	19. PHOTOOCOPER 112	20 19
20. PHOTOOCOPER 112	20 20	20. PHOTOOCOPER 112	20 20	20. PHOTOOCOPER 112	20 20
21. PHOTOOCOPER 112	20 21	21. PHOTOOCOPER 112	20 21	21. PHOTOOCOPER 112	20 21
22. PHOTOOCOPER 112	20 22	22. PHOTOOCOPER 112	20 22	22. PHOTOOCOPER 112	20 22
23. PHOTOOCOPER 112	20 23	23. PHOTOOCOPER 112	20 23	23. PHOTOOCOPER 112	20 23
24. PHOTOOCOPER 112	20 24	24. PHOTOOCOPER 112	20 24	24. PHOTOOCOPER 112	20 24
25. PHOTOOCOPER 112	20 25	25. PHOTOOCOPER 112	20 25	25. PHOTOOCOPER 112	20 25
26. PHOTOOCOPER 112	20 26	26. PHOTOOCOPER 112	20 26	26. PHOTOOCOPER 112	20 26
27. PHOTOOCOPER 112	20 27	27. PHOTOOCOPER 112	20 27	27. PHOTOOCOPER 112	20 27
28. PHOTOOCOPER 112	20 28	28. PHOTOOCOPER 112	20 28	28. PHOTOOCOPER 112	20 28
29. PHOTOOCOPER 112	20 29	29. PHOTOOCOPER 112	20 29	29. PHOTOOCOPER 112	20 29
30. PHOTOOCOPER 112	20 30	30. PHOTOOCOPER 112	20 30	30. PHOTOOCOPER 112	20 30

PROJECT: SURGENOR TRUCK CENTRE RENOVATION  
 1571 LIVERPOOL COURT  
 OTTAWA, ONTARIO

DRAWING: ELECTRICAL: DETAILS AND PANEL SCHEDULES

DATE: AUGUST 2018  
 DESIGNED BY: J.F.B.  
 DRAWN BY: J.F.B.  
 CHECKED BY: B.T.

SCALE: N.T.S.

NO. DIMS: 12  
 PROJECT NO: 18165  
 DRAWING NO: E-9