

MERIDIAN RETIREMENT HOME

1 MERIDIAN ROAD OTTAWA, ONTARIO

ELECTRICAL

Client

LIGHTING & FIRE ALARM LEGEND	
SYMBOL	DESCRIPTION
	FLUORESCENT/LED LIGHT FIXTURE - TYPE AS SHOWN
	CEILING MOUNTED LIGHT FIXTURE - TYPE AS SHOWN
	WALL MOUNTED LIGHT FIXTURE - TYPE AS SHOWN
	WALL MOUNTED SWITCH - M.H. 1200mm A.F.F.
	CEILING MOUNTED MOTION SENSOR SWITCH
	CEILING MOUNTED EXIT LIGHT, SINGLE OR DOUBLE-FACE AS SHOWN
	WALL MOUNTED EXIT LIGHT, SINGLE OR DOUBLE-FACE AS SHOWN
	EMERGENCY BATTERY UNIT C/W RECEPTACLE AND LIGHTING HEADS
	REMOTE EMERGENCY LIGHTING DUAL HEAD - WALL MOUNTED
	FIRE ALARM HEAT DETECTOR, 57°C RATE OF RISE AND FIXED TEMP.
	FIRE ALARM SMOKE DETECTOR
	FIRE ALARM BELL
	FIRE ALARM PULL STATION
	FIRE ALARM STROBE LIGHT

POWER LEGEND	
SYMBOL	DESCRIPTION
	15A, 120V WALL MOUNTED DUPLEX RECEPTACLE
	DEDICATED DUPLEX RECEPTACLE
	GROUND FAULT INTERRUPTING RECEPTACLE
	RECEPTACLE INSTALLED OVER COUNTER
	5-20R HOUSEKEEPING RECEPTACLE
	SPLIT CIRCUIT RECEPTACLE
	5-20R RECEPTACLE INSTALLED OVER COUNTER
	SPECIAL RECEPTACLE - TYPE AS INDICATED
	120V JUNCTION BOX, 250x250x150mm UNLESS NOTED OTHERWISE
	MAIN JUNCTION/PULL BOX
	SURFACE MOUNTED PANEL
	RECESSED PANEL
	BARRIER-FREE DOOR OPERATOR C/W PUSHBUTTONS
	CONDUIT DOWN
	CONDUIT UP
	HARD WIRE CONNECTION
	PILOT LIGHT
	HOMERUN BACK TO PANEL
	WIRING IN OR UNDER FLOOR
	CONDUIT STUB C/W BUSHING
	FORCE FLOW ELECTRIC HEATER - SURFACE MOUNTED
	HORN/STROBE FOR UNIVERSAL WASHROOM
	*OCCUPIED SIGN FOR UNIVERSAL WASHROOM
	DURESS PUSH BUTTON

ABBREVIATION LEGEND	
SYMBOL	DESCRIPTION
F	FLOOR MOUNTED
GFI	GROUND FAULT INTERRUPTING, 5 mA
GND	GROUND
C	CEILING MOUNTED
OC	OVER COUNTER
WP	WEATHERPROOF
RB	RELAY BASE
MW	MICROWAVE
DW	DISHWASHER
HP	HEAT PUMP

ELECTRICAL DRAWING SHALL BE READ IN CONJUNCTION WITH MECHANICAL, ARCHITECTURAL AND STRUCTURAL SPECIFICATIONS AND DRAWINGS. REFER TO ARCHITECTURAL DETAIL DRAWINGS FOR DIMENSIONS AND ADDITIONAL INFORMATION.

GENERAL NOTES	
DEMOLITION NOTES:	
<ol style="list-style-type: none"> UNLESS OTHERWISE NOTED, MATERIALS FOR REMOVAL BECOME THE CONTRACTOR'S PROPERTY AND SHALL BE TAKEN FROM SITE AND DISPOSED OF IN ACCORDANCE WITH ALL APPLICABLE CODES, STANDARDS AND REGULATIONS. DISCONNECT AND MAKE SAFE ALL SYSTEMS TO BE DEMOLISHED INCLUDING PANELS, FEEDERS, BRANCH CIRCUITS AND EQUIPMENT BY OTHER DIVISIONS. COORDINATE WITH OTHER DIVISIONS. MAINTAIN EXISTING REMAINING CIRCUITS, SYSTEMS, ETC., WHICH PASS THROUGH AREA OF CONSTRUCTION AND IN CLOSE PROXIMITY. PROVIDE NECESSARY COMPONENTS TO MAINTAIN SYSTEMS. ENSURE COMPONENTS WILL BE CONCEALED WHEN CONSTRUCTION IS COMPLETE. REINSTATE IMMEDIATELY ANY REMAINING EXISTING SYSTEMS IN-ADVERTENTLY INTERRUPTED DURING CONSTRUCTION. THE DRAWINGS INDICATE KNOWN CONDITIONS AND MAY NOT INDICATE ALL DEMOLITION REQUIREMENTS. ELECTRICAL CONTRACTOR SHALL VISIT THE SITE PRIOR TO TENDER SUBMISSION AND VERIFY REQUIREMENTS AND INCLUDE ALL COSTS IN TENDER. REMOVE REDUNDANT CONDUIT AND WIRING BACK TO SOURCE UNLESS OTHERWISE NOTED, AND MAKE SAFE. DEVICES FROM DEMOLITION ARE NOT TO BE REUSED UNLESS NOTED OTHERWISE. NEW DEVICES SHALL BE SUPPLIED WHERE NECESSARY. ALL FIRE ALARM DEVICES TO REMAIN IN OPERATION. PROTECT SMOKE DETECTORS FROM DUST EXPOSURE DURING CONSTRUCTION. ENSURE FIRE ALARM SYSTEM IS OPERATIONAL AT THE END OF EACH SHIFT. AFTER DEMOLITION WORK IS COMPLETE AND MINIMUM THREE (3) WORKING DAYS PRIOR TO PROCEEDING WITH NEW WORK, NOTIFY ENGINEER FOR INSPECTION. 	
GENERAL NOTES:	
<ol style="list-style-type: none"> ELECTRICAL WORK TO BE DONE IN ACCORDANCE WITH THE ELECTRICAL SAFETY CODE OF ONTARIO, AND WITH NEW ARCHITECTURAL/INTERIOR DESIGNER'S LAYOUT (LOCATION/MOUNTING HEIGHTS). CONTRACTOR TO OBTAIN ALL NECESSARY PERMITS, PAY ALL APPLICABLE FEES AND INSPECTION COSTS. COORDINATE WORK WITH ALL OTHER TRADES TO AVOID INTERFERENCE. ENSURE ELECTRICAL COMPONENTS (E. WIRING, CONDUIT, ETC.) RELATING TO THE AREA OF WORK ARE INDEPENDENTLY SECURED TO COMPLY WITH CODE REQUIREMENTS. IT IS NOT ACCEPTABLE TO SECURE THE COMPONENTS TO DUCTWORK, DUCT WORK TO CONDUIT, OR ANY OTHER SYSTEMS. ENSURE ALL EXISTING CEILING MOUNTED BOXES ARE CLOSED PRIOR TO COMPLETION OF PROJECT. PROVIDE LABELED AND COLOR CODED COVER PLATES (E. PANEL NAME AND CIRCUIT NUMBER) AS REQUIRED. MINIMUM THREE (3) WORKING DAYS PRIOR TO CLOSING CEILING, NOTIFY THE ENGINEER FOR CEILING INSPECTION. CONSTRUCTION PHASING TO BE COORDINATED WITH BUILDING MANAGEMENT. 	
LIGHTING NOTES:	
<ol style="list-style-type: none"> RELOCATE AND CONNECT LIGHT FIXTURES TO SUIT INDICATED LAYOUT, EXTEND CONDUIT AND WIRING AS NECESSARY AND CONNECT LUMINAIRES TO EXISTING CIRCUITS. MODIFY ALL AFFECTED (RELOCATED OR REWIRED) LIGHT FIXTURES TO ACCOMMODATE NEW LAYOUT. 	
FIRE ALARM NOTES:	
<ol style="list-style-type: none"> MODIFY INITIATING AND SIGNAL CIRCUITS AS REQUIRED TO ACCOMMODATE ROOM MODIFICATIONS AND SUPERVISORY DEVICES ADDITION/DELETION. PROVIDE WIRING COMPLETE WITH NEW ZONES AS REQUIRED FOR NEW INITIATING AND AUDIBLE DEVICES. PROVIDE NEW MODULES. UPDATE PROGRAMMING AS REQUIRED AND PROVIDE REPORT. TEST FINAL INSTALLATION AND PROVIDE VERIFICATION OF FIRE ALARM SYSTEMS IN ACCORDANCE WITH CAN/ULC S537 LATEST EDITION. VERIFICATION REPORT SHALL INCLUDE MEASURED dB LEVELS. 	
POWER NOTES:	
<ol style="list-style-type: none"> ENSURE EXISTING REMAINING OUTLETS IN AFFECTED AREA ARE FUNCTIONAL. DO NOT MOUNT WALL OUTLETS BACK TO BACK. LEAVE MINIMUM 12" SPACE BETWEEN OUTLETS. STAGGER OUTLETS WITHIN ALTERNATE STUD CAVITIES. DO NOT ANCHOR BACK TO BACK OUTLETS TO THE SAME STUD. 	
SECURITY NOTES:	
<ol style="list-style-type: none"> PROVIDE ROUGH-IN SINGLE GANG BOXES AND 19MM EMT TO CEILING SPACE COMPLETE WITH PULL CORD. WIRING AND DEVICES SUPPLIED BY OTHERS. 	
COMMUNICATION NOTES:	
<ol style="list-style-type: none"> PROVIDE ROUGH-IN DOUBLE GANG BOXES AND 19MM EMT TO CEILING SPACE COMPLETE WITH PULL CORD. WIRING AND DEVICES SUPPLIED BY OTHERS. 	
SCHEDULING OF WORK:	
<ol style="list-style-type: none"> MAINTAIN POWER, FIRE ALARM AND COMMUNICATION SYSTEM SERVICE INTERRUPTIONS TO A MINIMUM. COORDINATE POWER AND FIRE ALARM INTERRUPTIONS WITH BUILDING MAINTENANCE. PROVIDE 4 DAY NOTICE AND OBTAIN WRITTEN APPROVAL FROM END USER FOR ACCEPTABLE DOWN TIME SCHEDULE. REFER TO ABATEMENT REPORT FOR REMOVED INSULATION AND FOR AREAS TO AVOID. 	

SYSTEMS LEGEND	
SYMBOL	DESCRIPTION
	CATV OUTLET BOX
	TELEPHONE/DATA OUTLET BOX
	MAGLOCK
	TELEPHONE OUTLET BOX
	CARD READER
	DOOR CONTACT
	MAG HOLD OPEN
	MAGNETIC DOOR LOCK

LIGHTING FIXTURE SCHEDULE							
TYPE	DESCRIPTION	CATALOG NUMBER	LAMPS PER FIXTURE			REMARKS	
			QTY	TYPE	WATTS		
1	RECESSED DOWN LIGHT FLUX	ATLANTIC LIGHTING LED4-SY20-35K-U/4LED10-CL	1	LED	25	3500K 120	RECESSED 0-10V DIMMING
2	RECESSED 2X2	CREE ZR22C-32L-35K-10V-FD	1	LED	32	3500K 120	RECESSED C/W WIRE GUARD, 0-10V DIMMING
3	SURFACE MOUNTED 1X4 FLUX	LUMENWERK QUAWS-HLO-LED-8075035-UNV-DR-C-W	1	LED	20	3500K 120	SURFACE WALL
4	PENDENT FLUX	POP CORE ROUND 24 LED POROPD 24 ULO 5H LED 80 3500 30 120W	1	LED	45	3500K 120	RECESSED
5	COVE LIGHTING FLUX	ECOSENSE SLIM COVE DIM SCD-M-48-35-MULT	1	LED	4	3500K 120	SURFACE
6	RECESSED DOWN LIGHT FLUX	ATLANTIC LIGHTING LED4-SY20-35K-U/4LED10-CL	1	LED	25	3500K 120	SURFACE WEATHERPROOF
7	INTERIOR WALL SCIENCE WSA	WS-W91809-30-B2	1	LED	30	3500K 120	SURFACE WALL
8	CYLINDER	ATLANTIC LIGHTING SLED101B 10X18 LED	1	LED	17.7	3500K 120	SURFACE
9	WRAPAROUND	LUMENWERK QUAD WIDE QUAWS-HLO-LED-90-750-35	1	LED	17.7	3500K 120	PENDENT

HEATING SCHEDULE						
TYPE	DESCRIPTION	CATALOG NUMBER	QTY	VOLT	MOUNTING	REMARKS
	FORCE FLOW HEATER SINGLE FAN	OAC OAC02008-T	1	208	WALL	2KW

DATE	REVISION	REF
2019-03-08	ISSUED FOR TENDER	2
2019-02-11	ISSUED FOR PERMIT/TENDER	1
2019-02-06	ISSUED FOR REVIEW	0

THE ENGINEER WAIVES ANY AND ALL RESPONSIBILITY AND LIABILITY FOR PROBLEMS WHICH ARISE FROM FAILURE TO FOLLOW THESE PLANS, SPECIFICATIONS AND THE DESIGN INTENT THEY CONVEY, OR FOR PROBLEMS WHICH ARISE FROM OTHER FAILURE TO OBTAIN AND / OR FOLLOW THE ENGINEER'S GUIDANCE WITH RESPECT TO ANY ERRORS, OMISSIONS, INCONSISTENCIES, AMBIGUITIES OR CONFLICTS WHICH ARE ALLEGED.

THIS DRAWING IS THE PROPERTY OF GOODKEY WEEDMARK & ASSOCIATES LIMITED AND ALL COPYRIGHTS ARE RESERVED. NO USE OF THIS DRAWING MAY BE MADE WITHOUT EXPRESS WRITTEN CONSENT.

L'INGÉNIEUR DÉCLINE TOUTE RESPONSABILITÉ DÉCOULANT DE PROBLÈMES FAISANT SUITE AU NON RESPECT DES PLANS, DEVIS ET DE L'INTENTION DU CONCEPT QU'ILS INDIQUENT OU DE TOUTS LES PROBLÈMES POUVANT RÉSULTER DU DÉFAUT D'OBTENIR ET / OU DE SUIVRE LES CONSEILS DE L'INGÉNIEUR EN CE QUI CONCERNE LES ERREURS, OMISSIONS, INCONSISTENCES, AMBIGUITÉS OU CONFLITS ALLEGUÉS.

CE DESSIN EST LA PROPRIÉTÉ LITTÉRAIRE DE GOODKEY WEEDMARK & ASSOCIATES LIMITED ET TOUS LES DROITS SONT RÉSERVÉS. L'UTILISATION EST INTERDITE SANS LE CONSENTEMENT ÉCRIT DE L'AUTEUR.

NE PAS MESURER LES DESSINS À L'ÉCHELLE

Goodkey Weedmark
Consulting Engineers

GOODKEY WEEDMARK & ASSOCIATES LIMITED
1688 Woodward Dr. Ottawa Ontario Canada K2C 3R8
613 727-5111 Voice
613 727-5115 Fax
www.gwal.com Web

Project north Nord du projet

Seal/Sceau

LICENSED PROFESSIONAL ENGINEER
A.O. MIKHAEL
100071099
March 13 2019
PROVINCE OF ONTARIO

Project/Projet

MERIDIAN RETIREMENT COMMUNITY, FIRE RESTORATION

Drawing title/Titre du dessin

LEGEND, GENERAL NOTES & LIGHT FIXTURE SCHEDULE

Scale AS NOTED
Echelle

Project no./No. du projet 2019-148

Design by M.TROTTIER
Conçu par

Drawn by L.BECK
Dessiné par

Reviewed by A.MIKHAEL
Examiné par

Date MARCH 2019

Revision no. -
Acad file/Fichier: -

OF 4

E1

ELECTRICAL SPECIFICATIONS:

1. COMPLY WITH THE REQUIREMENTS OF THE INSTRUCTIONS TO BIDDERS, THE GENERAL CONDITIONS OF THE CONTRACT AND THE SUPPLEMENTARY GENERAL CONDITIONS INCLUDED IN THE TENDER DOCUMENTS.
2. CONTRACTOR SHALL FOLLOW THE BIDDING DOCUMENT PROJECT SCHEDULE. UPON AWARD, CONTRACTOR SHALL SUBMIT WORK SCHEDULE AND EQUIPMENT DELIVERY SCHEDULE TO PROJECT MANAGER & ENGINEER FOR REVIEW AND APPROVAL.
3. ALL WORK TO BE CONDUCTED DURING HOURS SPECIFIED BY THE PROJECT MANAGER.
4. ALL INSTALLATIONS SHALL BE IN ACCORDANCE WITH ALL APPLICABLE CODES AND BY-LAWS AND BE INSTALLED BY LICENSED WORKMEN SKILLED IN THAT PARTICULAR PORTION OF THE CONTRACT.
5. ANY CONFLICT OR QUESTIONS THAT ARISE IN RELATION TO THE DESIGN DOCUMENTS DURING THE TENDER PERIOD SHALL BE BROUGHT TO THE ATTENTION OF THE ENGINEER. IF THIS PROCEDURE IS NOT FOLLOWED, REROUTING AND MODIFICATION AS REQUIRED TO COMPLETE THE WORK SHALL BE THE RESPONSIBILITY OF THE CONTRACTOR.
6. GIVE ALL NOTICES, OBTAIN ALL NECESSARY PERMITS AND PAY ALL APPLICABLE FEES AND INSPECTION COSTS AND DELIVER TO ENGINEER ALL NECESSARY FINAL CERTIFICATES OF INSPECTION AND APPROVAL WHICH MAY BE REQUIRED BY AUTHORITIES HAVING JURISDICTION OVER WORK, AS EVIDENCE THAT WORK INSTALLED CONFORMS WITH LAWS AND REGULATIONS OF ALL GOVERNING AUTHORITIES; BEFORE FINAL CERTIFICATE OF PAYMENT MAY BE CONSIDERED DUE. FURNISH COPIES OF ALL DRAWINGS AS MAY BE REQUIRED TO COMPLY WITH ABOVE. NOTIFY INSPECTION AUTHORITIES IN SUFFICIENT TIME FOR THEM TO INSPECT WORK.
7. EXAMINE SITE AND LOCAL CONDITIONS AFFECTING WORK UNDER THIS DIVISION TO ENSURE THAT WORK UNDER THIS DIVISION CAN BE SATISFACTORILY CARRIED OUT WITHOUT CHANGES TO DRAWINGS. NO ALLOWANCE WILL BE MADE LATER FOR ANY EXPENSE INCURRED THROUGH FAILURE TO MAKE THIS EXAMINATION. START OF WORK WILL BE DEEMED EVIDENCE OF ACCEPTANCE OF, AND SATISFACTION WITH, EXISTING CONDITIONS.
8. GUARANTEE ALL WORK FOR 12 MONTHS FROM THE DATE OF ACCEPTANCE.
9. ENSURE THAT ALL PRECAUTIONS ARE TAKEN TO PROTECT ALL PERSONNEL FROM HAZARDS DURING THE WORK. PROTECT ALL EQUIPMENT FROM DAMAGE FROM ANY CAUSE INCLUDING WEATHER.
10. USE ONLY NEW, FULLY CSA AND ULC APPROVED FOR USE AS INSTALLED MATERIALS, AND TO MEET THIS SPECIFICATION IN ALL RESPECTS.
11. INSPECT ALL EQUIPMENT UPON DELIVERY AND NOTIFY PROJECT ENGINEER OF ANY DAMAGE OR DEFICIENCIES.
12. COORDINATE MATERIAL STORAGE WITH THE SITE SUPERINTENDENT AND OTHER TRADES.
13. CONTRACTOR TO NOTIFY PROJECT MANAGER IN WRITING MINIMUM OF THREE (3) WORKING DAYS BEFORE SCHEDULED SUBSTANTIAL COMPLETION TO ARRANGE INTERIM INSPECTION AND EQUIPMENT COMMISSIONING. NOTIFY PROJECT MANAGER IN WRITING OF ANY CHANGES IN SCHEDULE.
14. DURING THE COURSE OF CONSTRUCTION AND UPON COMPLETION, REMOVE ALL RUBBISH AND WASTE RESULTING FROM THIS WORK, TO THE SATISFACTION OF THE ENGINEER. CHECK, CLEAN AND REPAINT WHERE NECESSARY, ALL ELECTRICAL EQUIPMENT AND LEAVE IN A FIRST CLASS CONDITION.
15. THE WORK AS COVERED BY THESE SPECIFICATIONS AND PLANS IS INTENDED TO COMPLY EXACTLY WITH THE LATEST RULES AND REGULATIONS OF THE INSPECTION AUTHORITIES, AND THESE RULES ARE TO BE CONSIDERED AN INTEGRAL PART OF THESE SPECIFICATIONS. IN CASE OF CONFLICT, ANY RULING BY THE INSPECTION AUTHORITY SHALL BE FINAL. ALL CHANGES AND ALTERATIONS TO THE CONTRACTOR'S WORK REQUIRED BY AN AUTHORIZED INSPECTOR OR ANY AUTHORITY HAVING JURISDICTION DUE TO THE CONTRACTORS WORK SHALL BE CARRIED OUT AT NO EXPENSE TO THE OWNER.
16. MANUFACTURER'S INSTRUCTIONS REGARDING THE HANDLING, INSTALLATION AND TESTING OF EQUIPMENT SPECIFIED HEREIN SHALL BE CONSIDERED PART OF THIS SPECIFICATION.
17. PROVIDE ELECTRONIC COPY (PDF FORMAT) OF SHOP DRAWINGS FOR ALL SYSTEMS AND EQUIPMENT FOR REVIEW. SHOP DRAWINGS SHALL INCLUDE BUT NOT BE LIMITED TO, THE FOLLOWING INFORMATION:
 - a. FLOOR ANCHORING METHOD AND FOUNDATION TEMPLATE.
 - b. DIMENSIONED CABLE ENTRY AND EXIT LOCATIONS.
 - c. DIMENSIONED POSITION AND SIZE OF BUS.
 - d. OVERALL WEIGHT, LENGTH, HEIGHT AND DEPTH, GAUGE AND TYPE OF MATERIALS.
 - e. DIMENSIONED LAYOUT OF INTERNAL AND FRONT PANEL.
 - f. MOUNTED COMPONENTS.
 - g. ELECTRICAL CHARACTERISTICS AND PERFORMANCE DATA.
 - h. WIRING DIAGRAMS.
 - i. NAME OF CONTRACTOR C/W SIGNED REVIEW STAMP.
 - j. NAME OF COMPONENT, SERVICE OR SYSTEM.
 - k. NUMBER OF PAGES FOR EACH TYPED PAGE (I.E. PG 1 OF 5).
18. SUBMIT ELECTRONIC (PDF FORMAT) COPY OF OPERATION & MAINTENANCE (O&M) MANUALS FOR APPROVAL. PROVIDE A COPY OF THE FOLLOWING IN THE MANUALS:
 - a. LETTER OF WARRANTY
 - b. ELECTRICAL SAFETY AUTHORITY (ESA) INSPECTION CERTIFICATE.
 - c. CITY INSPECTION REPORT
 - d. FIRE ALARM VERIFICATION REPORT
 - e. UPDATED PANEL SCHEDULES, C/W ELECTRICAL COMPANY'S NAME AND DATED
 - f. SHOP DRAWINGS
 - g. AS BUILTS
 - h. LOAD BALANCING REPORT.
 - i. MECHANICAL EQUIPMENT START UP REPORTS.
 - j. LIST OF SUPPLIERS C/W ADDRESS AND PHONE NUMBERS.
 - k. SEISMIC REVIEW LETTER.
19. SUPPLY ALL NECESSARY TOOLS, EQUIPMENT AND PERSONNEL AND PROVIDE DEMONSTRATION AND TRAINING TO OPERATING AND MAINTENANCE PERSONNEL IN OPERATING, CONTROLLING, ADJUSTING, TROUBLESHOOTING AND SERVICING OF ALL SYSTEMS AND EQUIPMENT DURING REGULAR WORK HOURS, PRIOR TO ACCEPTANCE.
20. AFTER AWARD OF CONTRACT, SUBMIT A DETAILED COST BREAKDOWN INDICATING MATERIAL AND LABOUR COSTS FOR EACH PORTION OF THE WORK, INCLUDING DEMOLITION, LIGHTING, POWER DISTRIBUTION, COMMUNICATIONS, FIRE ALARM, ETC. TO BE APPROVED BY THE ENGINEER.
21. EXISTING ELECTRICAL SYSTEMS HAVE BEEN ONLY PARTIALLY INDICATED. REGARD INFORMATION RELATED TO EXISTING INSTALLATION AS A GUIDE ONLY. DETERMINE STATUS, QUANTITIES AND LOCATION OF EQUIPMENT AND SYSTEMS, ON SITE, PRIOR TO COMMENCEMENT OF REMOVAL AND/OR EXTENSION OF SAME.
22. THE DRAWINGS SHALL BE CONSIDERED TO SHOW THE GENERAL CHARACTER AND SCOPE OF THE WORK AND NOT THE EXACT DETAILS OF THE INSTALLATION. THE INSTALLATION SHALL BE COMPLETE WITH ALL ACCESSORIES REQUIRED FOR A COMPLETE AND OPERATIVE INSTALLATION.
23. THESE ELECTRICAL DRAWINGS AND SPECIFICATIONS MUST BE READ IN CONJUNCTION WITH THE ARCHITECTURAL AND MECHANICAL DRAWINGS AND SPECIFICATIONS.

24. THE WORD "PROVIDE" SHALL DENOTE "SUPPLY, INSTALL, CONNECT AND TEST".
25. LABELING:
 - a. FOR ALL NEW, RELOCATED AND EXISTING--TO-REMAIN ELECTRICAL DEVICES WITHIN THE CONTRACT AREA, PROVIDE CLEAR "BROTHER P-TOUCH" LABELS INDICATING CIRCUIT AND PANEL AT ALL EQUIPMENT, DEVICES, RECEPTACLES AND JUNCTION BOXES. FOR DEDICATED RECEPTACLE, INCLUDE THE WORD "DED" C/W CIRCUIT NUMBER. FOR EXIT LIGHTS, PROVIDE [BLACK] LETTERING ON [RED] BACKGROUND.
 - b. PROVIDE LAMACOID LABELS ON DISCONNECT SWITCHES, MOTOR STARTERS, TRANSFORMERS AND PANELS. CLEARLY INDICATE EQUIPMENT CONTROLLED OR AREA SERVICED AS WELL AS FEEDER SOURCE. INDICATE FUSE SIZE AND TYPE ON FUSED DISCONNECTS SWITCHES. LETTERING TO BE BLACK ON WHITE BACKGROUND, MINIMUM 25mm HIGH.
 - c. TRACE EXISTING CIRCUITS AND UPDATE PANEL SCHEDULES.
26. GENERAL TRADES TO PROVIDE CUTTING, PATCHING AND CORING OF ALL WALLS, CEILINGS AND OTHER SURFACES REQUIRED TO FIT THE ELECTRICAL EQUIPMENT. CHECK WITH BUILDING MANAGEMENT PRIOR TO CORE DRILLING AND CUTTING OF FLOOR SLAB, REGARDING BUILDING REQUIREMENTS AND POLICIES. PRIOR TO SLAB CUTTING OR CORING, FIRST SCAN THE SLAB AND COORDINATE DRILLING TO MINIMIZE CUTTING OF THE REINFORCING STEEL. FIRE STOP ALL NEW FIRE RATED PENETRATIONS. THE CONTRACTOR IS TO INCLUDE IN TENDER PRICE ALL WORK ASSOCIATED WITH CORE DRILLING AFTER NORMAL WORKING HOURS. OBTAIN WRITTEN VERIFICATION OF THE LOCATIONS FROM THE ARCHITECT AND/OR INTERIOR DESIGNER PRIOR TO DRILLING. CUTTING TORCHES SHALL NOT BE USED FOR MAKING HOLES. PATCH ALL HOLES THROUGH SLAB WITH FIRE-STOP CAULKING (ULC LISTED). PATCHED SURFACES ARE TO BE PRIME FINISHED, READY FOR FINAL COVERING BY OTHERS.
27. SEISMIC RESTRAINT SYSTEM (SRS):
 - a. GENERAL:
 - a.o. PROVIDE DESIGN, SUPPLY AND INSTALLATION OF COMPLETE SRS FOR ALL SYSTEMS, EQUIPMENT SPECIFIED FOR INSTALLATION ON THIS PROJECT AS PER ONTARIO BUILDING, CSA S832-06(R,2011).
 - a.b. DESIGN TO BE BY PROFESSIONAL ENGINEER SPECIALIZING IN DESIGN OF SRS AND REGISTERED IN PROVINCE OF ONTARIO, INCLUDING ALL COSTS ASSOCIATED WITH THIS WORK AS IT RELATES TO ELECTRICAL DIVISION.
 - a.c. INSTALLATIONS. SUBMIT DESIGN SKETCHES C/W PROFESSIONAL STAMP PRIOR TO START OF INSTALLATIONS, C/W INSTALLATION REQUIREMENTS.
 - a.d. ACCEPTABLE MATERIALS: KORUND-SAMPSON, MASON INDUSTRIES, TELCOUSTICS, VIBRA-SONIC CONTROL, VIBRON.
 - a.e. SUBMITTALS TO INCLUDE FULL DETAILS OF DESIGN CRITERIA.
 - a.f. SUBMIT ADDITIONAL COPY OF SHOP DRAWINGS AND PRODUCT DATA TO STRUCTURAL ENGINEER FOR REVIEW OF CONNECTION POINTS TO BUILDING STRUCTURE.
 - a.g. INSTALL VIBRATION ISOLATION EQUIPMENT IN ACCORDANCE WITH MANUFACTURER'S INSTRUCTIONS AND ADJUST MOUNTINGS TO LEVEL EQUIPMENT. ENSURE PIPE, DUCT AND ELECTRICAL CONNECTIONS TO ISOLATED EQUIPMENT DO NOT REDUCE SYSTEM FLEXIBILITY. ENSURE THAT PIPE, CONDUIT AND DUCT PASSING THROUGH WALLS AND FLOORS DO NOT TRANSMIT VIBRATIONS.
 28. ANCHORING METHODS:
 - a. ELECTRICAL EQUIPMENT, FIXTURES, CABLE TRAY, CONDUIT AND CABLING IS TO BE SECURELY ANCHORED OR FASTENED TO THE BUILDING STRUCTURE USING DRILLED HOLE WEDGE ANCHORS FOR CONCRETE STRUCTURES OR STEEL CLAMPS FOR STEEL STRUCTURES.
 - a.o. AIR, FUEL OR POWDER ACTUATED DEVICES OR ANY OTHER EQUIVALENT TYPE OF FASTENING DEVICES ARE NOT TO BE USED.
 - a.b. WHERE ANCHORING METHOD FORMS PART OF SEISMIC RESTRAINT REQUIREMENTS, ANCHORING METHODS TO COMPLY WITH SEISMIC RESTRAINT SYSTEMS (SRS).
 - b. LUMINAIRE SUPPORTS:
 - b.o. FOR RECESSED OR SURFACE MOUNTED LIGHTING IN SUSPENDED CEILING INSTALLATIONS, SUPPORT LUMINAIRES INDEPENDENTLY FROM CEILING, BY MEANS OF A MINIMUM OF TWO CHAIN HANGERS BOLTED TO DIAGONAL CORNERS OF THE FIXTURE BODY AND SECURED TO BUILDING STRUCTURE IN ACCORDANCE WITH ESA, AND SEISMIC RESTRAINT SYSTEMS (SRS).
29. GROUNDING AND BONDING:
 - a. PROVIDE GROUNDING AND BONDING OF ALL EQUIPMENT WITH APPROVED FITTINGS AND CONDUCTORS OF AMPLE CAPACITY IN ACCORDANCE WITH ONTARIO ELECTRICAL SAFETY CODE. ALL CONDUCTORS SHALL HAVE GREEN INSULATION OR BE COLOUR CODED WITH PERMANENTLY ATTACHED GREEN TAPE 21MMWIDE AT EACH END. PROVIDE INSULATED GROUND/BONDING CONDUCTOR IN EACH CONDUIT.
 - b. PROVIDE A PRE-DRILLED 300 MM X 150 MM X 6 MM COPPER GROUND BAR IN THE SERVER ROOM CONNECTED TO SERVICE ENTRANCE GROUND IN ELECTRICAL ROOM.
30. WIRING AND RACEWAYS:
 - a. ALL INTERIOR WIRING SHALL BE COPPER RW90 (190 FOR 347V OR LESS) #12 CONDUCTOR MINIMUM.
 - b. ALL SURFACE WIRING TO BE IN WIREMOLD TYPE METAL SURFACE RACEWAY COMPLETE WITH OUTLET BOXES, CONNECTORS AND FASTENINGS.
 - c. AC-90 (BX) MAY BE USED IN REMOVABLE CEILINGS AND METAL PARTITION WALLS, MAXIMUM LENGTH 3 METERS.
 - d. ALL NEW RACEWAYS SHALL BE THIN WALL ELECTRICAL METALLIC TUBING (EMT) UNLESS OTHERWISE INDICATED. CONDUITS TO BE COMPLETE WITH STEEL SET--SCREW COUPLINGS AND CONNECTORS AND NYLON BUSHING.
 - e. USE LIQUID TIGHT FLEXIBLE METAL CONDUIT FOR CONNECTION TO MOTORS.
 - f. USE LIQUID TIGHT FLEXIBLE METAL CONDUIT FOR CONNECTION TO EQUIPMENT IN DAMP, WET OR CORROSIVE LOCATIONS.
 - g. SURFACE CONDUIT TO RUN PARALLEL OR PERPENDICULAR TO BUILDING LINES.
 - h. ALL CONDUITS AND JUNCTION BOXES TO BE ANCHORED TO THE BUILDING STRUCTURE.
 - i. PROVIDE A POLYPROPYLENE PULL STRING IN ALL EMPTY CONDUITS.
 - j. EXISTING FEEDERS RELOCATED UNDER THIS CONTRACT TO BE REWIRED; SPLICE NEW WIRE TO EXISTING WIRE FROM JUNCTION BOX TO JUNCTION BOX, OR FROM JUNCTION BOX TO EXISTING EQUIPMENT.
 - k. CONTRACTOR MAY RE-USE EXISTING CONDUIT AND/OR GRID PULL BOXES WHERE SUITABLE FOR RE-USE WITH NEW OR RELOCATED RUNS.
 - l. REMOVE AND DISPOSE OF ANY REDUNDANT EXISTING WIRING.
 - m. 120V CIRCUITS OF LENGTH GREATER THAN 25m TO BE #10 AWG MINIMUM OR AS REQUIRED TO LIMIT VOLTAGE DROP WITHIN CODE SPECIFIED VALUE.
 - n. MINIMUM SIZE CONDUIT TO BE 21mm UNLESS SPECIFIED OTHERWISE.
31. DEVICES: SWITCHES AND RECEPTACLES TO BE SPECIFICATION GRADE WITH STAINLESS STEEL COVER PLATES TO CONFORM WITH INTERIOR DESIGNER'S DRAWINGS. INSTALL & MOUNT TO CODES AND STANDARDS. COORDINATE EXACT LOCATIONS WITH ARCHITECTURAL AND/OR INTERIOR DESIGNER'S DRAWINGS.
32. MOUNTING HEIGHTS:

UNLESS NOTED OTHERWISE, MOUNTING HEIGHT FOR ALL ELECTRICAL DEVICES SHALL MEET 'BARRIER-FREE' CODE REQUIREMENTS:

 - a. 400mm A.F.F. FOR RECEPTACLES, VOICE/DATA OUTLETS, ETC.
 - b. 1100mm A.F.F. FOR LIGHT SWITCHES, ETC.
 - c. 175mm ABOVE TOP OF COUNTERTOPS OR COUNTER BACK SPLASHES.
 - d. 1100mm A.F.F. FOR PULL STATIONS, THERMOSTATS
 - e. WALL MOUNTED FIRE ALARM AUDIBLE AND VISUAL SIGNAL DEVICES: MINIMUM 2300MM AND MAXIMUM 2400MM TO TOP OF DEVICE, OR 150MM BELOW CEILING WHERE CEILING HEIGHTS DO NOT ALLOW. ALL IN ACCORDANCE WITH CAN/ULC S-524.

33. LUMINAIRES:
 - a. PROVIDE LIGHTING FIXTURES, COMPLETE WITH LAMPS, AS INDICATED IN LIGHT FIXTURE SCHEDULE.
34. FIXTURE INSTALLATION: DO NOT MOUNT FIXTURES ABOVE PIPES, DUCTS OR EQUIPMENT. CHECK LOCATIONS OF WORK BY OTHER TRADES ON PROJECTS AND PLAN COOPERATIVELY WITH OTHERS TO AVOID CONFLICT. PROVIDE LONGER HANGERS TO CLEAR OBSTRUCTIONS, IN EVENT OF UNAVOIDABLY TIGHT LOCATIONS. PROVIDE CHAIN HANGERS FOR ALL FIXTURES IN T-BAR CEILINGS.
35. EXIT LIGHTS:
 - a. EXIT:
 - a.o. TO CSA C22.2 NO.141-02AND CSA C860.
 - a.b. HOUSING: EXTRUDED STEEL, WHITE FINISH.
 - a.c. FACE AND BACK PLATES: EXTRUDED ALUMINUM.
 - a.d. LAMPS: LED WITH 25-YEAR RATED LIFE.
 - b. PICTOGRAM: PICTOGRAM PANEL WITH MULTIPLE FILMS FOR DIRECTION SELECTION, AND CLEAR PROTECTIVE PANEL. PICTOGRAM PANEL SHALL CONSIST OF GREEN PICTOGRAM AND WHITE GRAPHIC SYMBOL MEETING THE VISIBILITY SPECIFICATIONS REFERRED TO IN ISO 3864-1, AND CONFORM TO THE DIMENSIONS INDICATED IN ISO 7010.
 - c. SUITABLE FOR 347V OR 120V NORMAL SUPPLY AND 12VDC EMERGENCY SUPPLY.
 - d. DIE CAST MOUNTING BRACKET FOR WALL, CEILING, OR END MOUNTING AS INDICATED.
 - e. PROVIDE CIRCUIT LABELS AT ALL EXIT SIGNS.
36. UNIT EQUIPMENT FOR EMERGENCY LIGHTING:
 - a. PROVIDE EMERGENCY LIGHTING AS SHOWN ON DRAWINGS AND AS SPECIFIED HEREIN. USE 12V DC UNITS CONSISTING OF A SEALED LEAD BATTERY UNIT, WITH HI-LO SOLID STATE CHARGER, CONTROLS, TEST SWITCH, A.C. AND HI-CHARGE PILOT LIGHTS, VOLTMETER, AMMETER, LONG LIFE, SEALED, LEAD BATTERY IN 18-GAUGE STEEL CASE COMPLETE WITH MOUNTING BRACKET. UNIT TO BE PROVIDED WITH 3--CONDUCTOR POWER CORD TO PLUG INTO WALL MOUNTED RECEPTACLE.
 - b. EMERGENCY LIGHTS ARE NORMALLY OFF, AND BATTERY TO BE KEPT FULLY CHARGED BY AUTOMATIC CHARGER. ON FAILURE OF NORMAL POWER, EMERGENCY LIGHTS MUST COME ON AUTOMATICALLY.
 - c. PROVIDE BATTERY UNITS WITH SUFFICIENT CAPACITY TO PROVIDE 90% VOLTAGE AFTER 30 MINUTES OPERATION WITH CONNECTED LOAD PLUS SW SPARE CAPACITY. BATTERY TO CARRY A 10 YEAR PRO-RATA WARRANTY IN ADDITION TO THE 12 MONTH GUARANTEE ON TOTAL UNIT.
 - d. REMOTE LIGHTING HEADS TO BE 9W LED, 12V. RUN WIRING IN CONDUIT MINIMUM #10 AWG OR AS RECOMMENDED BY MANUFACTURER, VOLTAGE DROP AT ANY REMOTE HEAD SHALL NOT EXCEED 5%.
37. FIRE ALARM:
 - a. EXISTING MIRCOM FIRE ALARM SYSTEM IS SINGLE STAGE TO BE PROTECTED, MODIFIED AND RE-USED
 - b. ALL NEW FIRE ALARM SYSTEM COMPONENTS TO BE CAN/ULC APPROVED AND MATCH EXISTING.
 - c. ALL NEW DEVICES TO BE LABELED WITH CORRECT IDENTIFICATION, INCLUDING THE LOOP AND THE DEVICE NUMBER, ON THE BASE OF THE DEVICE IN ACCORDANCE WITH BUILDING STANDARD. LABELING OF THE DEVICE MUST BE VISIBLE ON THE OUTSIDE FOR EASY IDENTIFICATION BY MAINTENANCE PERSONNEL.
 - d. ALL NEW DEVICES TO BE VERIFIED BY MANUFACTURER & FIRE ALARM AGENCY RESPONSIBLE FOR MAINTENANCE OF THE SYSTEM.
 - e. THE SOFTWARE AND THE FIRE ALARM ADDRESSABLE DEVICE LEGEND MUST BE UPDATED IMMEDIATELY TO ADD NEW DEVICES AND TO REMOVE ANY DEVICES THAT HAVE BEEN ELIMINATED AS A RESULT OF THE PROJECT. AT THE COMPLETION OF THE PROJECT AN UPDATED FIRE ALARM ADDRESSABLE DEVICE LEGEND FOR THE BUILDING MUST BE SUBMITTED TO THE PROJECT MANAGER.
 - f. THE SEQUENCE OF OPERATIONS OF FIRE SAFETY SYSTEMS MUST BE PROVIDED TO THE PROJECT MANAGER (E.G. DOOR HOLDERS, EPO SHUTDOWNS, FAN SHUTDOWNS, DAMPER OPERATION, AC SHUTDOWNS ETC.)
 - g. NOTIFY AND DEMONSTRATE THE COMPLETE SYSTEM TO OWNER'S AND BUILDING INSPECTION'S REPRESENTATIVES. ONLY AFTER TESTING AND VERIFICATION PERFORMANCES HAVE BEEN COMPLETED AND ALL DEFICIENCIES RECTIFIED. IN THEIR PRESENCE, DEMONSTRATE THE PROPER FUNCTIONING OF THE SYSTEM. HAVE SYSTEM MANUFACTURER'S CERTIFIED TECHNICIAN PRESENT.
38. DISCONNECT SWITCHES:
 - a. HEAVY DUTY FUSIBLE AND NON-FUSIBLE DISCONNECT SWITCH IN CSA ENCLOSURE 2 (SPRINKLER PROOF), SIZED AS INDICATED. CSA 3 ENCLOSURE IN OUTDOOR OR DAMP LOCATIONS. ARC QUENCHER AND VISIBLE BLADE, QUICK MAKE, QUICK BREAK TYPE.
 - b. PROVISION FOR PADLOCKING IN [ON]--[OFF] SWITCH POSITION.
 - c. MECHANICALLY INTERLOCKED DOOR TO PREVENT OPENING WHEN HANDLE IN ON POSITION.
 - d. FUSES: SIZE AS INDICATED, HRCV (TIME DELAY TYPE).
39. MECHANICAL EQUIPMENT WIRING: PROVIDE ALL WIRING TO MECHANICAL EQUIPMENT, OBTAIN MECHANICAL SHOP DRAWINGS AND RECONFIRM FEEDER AND BREAKER REQUIREMENTS PRIOR TO INSTALLATION.

40. PANELBOARDS:
 - a. INSTALL CIRCUIT BREAKERS IN PANELBOARDS BEFORE SHIPMENT.
 - b. IN ADDITION TO CSA REQUIREMENTS MANUFACTURER'S NAMEPLATE MUST SHOW FAULT CURRENT THAT PANEL INCLUDING BREAKERS HAS BEEN BUILT TO WITHSTAND.
 - c. 250V BUSSES AND BREAKERS RATED FOR 10KA AND 14KA (SYMMETRICAL) INTERRUPTING CAPACITY MINIMUM RESPECTIVELY, OR AS INDICATED OTHERWISE.
 - d. SEQUENCE PHASE BUSSING WITH ODD NUMBERED BREAKERS ON LEFT AND EVEN ON RIGHT, WITH EACH BREAKER IDENTIFIED BY PERMANENT NUMBER IDENTIFICATION AS TO CIRCUIT NUMBER AND PHASE.
 - e. MAINS, NUMBER OF CIRCUITS, AND NUMBER AND SIZE OF BRANCH CIRCUIT BREAKERS AS INDICATED.
 - f. TWO KEYS FOR EACH PANELBOARD AND KEY PANELBOARDS ALIKE.
 - g. MAINS SUITABLE FOR BOLT-ON BREAKERS.
 - h. TRIM WITH CONCEALED FRONT BOLTS AND HINGES. 14 GAUGE UP TO 24 CIRCUIT, 12 GAUGE FOR LARGER PANELS.
 - i. DISTRIBUTION PANELS SHALL BE MINIMUM 12 GAUGE CONSTRUCTION.
 - j. COPPER BUSSING AND GROUND.
41. MOLDED CASE CIRCUIT BREAKERS:
 - a. BOLT-ON MOLDED CASE CIRCUIT BREAKER: QUICK-MAKE, QUICK-BREAK TYPE, FOR MANUAL AND AUTOMATIC OPERATION WITH TEMPERATURE COMPENSATION FOR 40 C AMBIENT.
 - b. COMMON-TRIP BREAKERS: WITH SINGLE HANDLE FOR MULTI-POLE APPLICATIONS.
 - c. CIRCUIT BREAKERS WITH INTERCHANGEABLE TRIPS AS INDICATED.
 - d. MOLDED CASE CIRCUIT BREAKER TO OPERATE AUTOMATICALLY BY MEANS OF THERMAL AND MAGNETIC TRIPPING DEVICES TO PROVIDE INVERSE TIME CURRENT TRIPPING AND INSTANTANEOUS TRIPPING FOR SHORT CIRCUIT PROTECTION.
42. FIELD QUALITY CONTROL

- a. CONDUCT AND PAY FOR THE FOLLOWING TESTS:
 - a.o. 600V AND 120V POWER DISTRIBUTION INCLUDING PHASING, VOLTAGE, GROUNDING AND LOAD BALANCING.
 - a.b. LIGHTING AND CONTROLS
 - a.c. MOTORS, HEATERS AND ASSOCIATED CONTROL EQUIPMENT
 - a.d. INSULATION INTEGRITY TESTING
 - a.e. HOT SPOT TESTING BY INFRARED SCANNER
 - a.f. SYSTEMS: FIRE ALARM, COMMUNICATION.
- b. SUBMIT TEST PROCEDURES AND INFORM ENGINEER AT LEAST 7 DAYS BEFORE SCHEDULED TESTS. ENGINEER TO WITNESS TESTS AT HIS DISCRETION.

43. COMMUNICATION
 - a. HORIZONTAL CABLE DISTRIBUTION TO BE SUPPLIED BY OWNER WILL BE DONE WITH CABLES THROUGH CEILING SPACE.
 - b. THIS ELECTRICAL CONTRACTOR TO PROVIDE HARD WALL OUTLETS WITH A DOUBLE GANG ELECTRICAL BOX WITH PLASTER RING AT EACH TELECOMMUNICATIONS OUTLET LOCATION SPECIFIED ON THE FLOOR PLANS. PROVIDE A 21mm CONDUIT WITH PULL STRING FROM EACH OF THESE ELECTRICAL BOXES UP INTO THE CEILING SPACE.
44. SECURITY
 - c. DEVICES AND CABLE DISTRIBUTION TO BE SUPPLIED BY OWNER WILL BE DONE VIA J-HOOKS, CABLES ARE RUN THROUGH CEILING SPACE AND DOWN TO THE HARD WALL.
 - d. THIS ELECTRICAL CONTRACTOR TO PROVIDE ROUH-IN ELECTRICAL BOXES AT EACH OUTLET LOCATION SPECIFIED ON THE FLOOR PLANS. PROVIDE A 21mm CONDUIT WITH PULL STRING FROM EACH OF THESE ELECTRICAL BOXES UP INTO THE CEILING SPACE.
45. HEATING
 - a. FORCE FLOW HEATER, RECESSED WALL UNIT FULLY ENCLOSED, REMOTE OR INTEGRAL THERMOSTAT AS INDICATED. SIZE AND WATTAGE AS INDICATED. OUELLET OVS SERIES.

Client

DATE	REVISION	REF
2019-03-08	ISSUED FOR TENDER	2
2019-02-11	ISSUED FOR PERMIT/TENDER	1
2019-02-06	ISSUED FOR REVIEW	0

THE ENGINEER WAKES ANY AND ALL RESPONSIBILITY AND LIABILITY FOR PROBLEMS WHICH ARISE FROM FAILURE TO FOLLOW THESE PLANS, SPECIFICATIONS AND THE DESIGN INTENT THEY CONVEY, OR FOR PROBLEMS WHICH ARISE FROM OTHER FAILURE TO OBTAIN AND / OR FOLLOW THE ENGINEER'S GUIDANCE WITH RESPECT TO ANY ERRORS, OMISSIONS, INCONSISTENCIES, AMBIGUITIES OR CONFLICTS WHICH ARE ALLEGED.

THIS DRAWING IS THE PROPERTY OF GOODKEY WEEDMARK & ASSOCIATES LIMITED AND ALL COPYRIGHTS ARE RESERVED. NO USE OF THIS DRAWING MAY BE MADE WITHOUT EXPRESS WRITTEN CONSENT.

DO NOT SCALE DRAWINGS.

L'INGÉNIEUR DÉCLINE TOUTE RESPONSABILITÉ DÉCULQUANT DE PROBLÈMES FASANT SUITE AU NON RESPECT DES PLANS, DEVIS ET DE L'INTENTION DU CONCEPT QU'ILS INDIQUENT OU DE TOUTS LES PROBLÈMES POUVANT RÉSULTER DU DÉFAUT D'OBTENIR ET / OU DE SUIVRE LES CONSEILS DE L'INGÉNIEUR EN CE QUI CONCERNE LES ERREURS, OMISSIONS, INCONSISTANCES, AMBIGUITÉS OU CONFLITS ALLEGUÉS.

CE Dessin EST LA PROPRIÉTÉ LITTÉRAIRE DE GOODKEY WEEDMARK & ASSOCIATES LIMITED ET TOUS LES DROITS SONT RÉSERVÉS. L'UTILISATION EST INTERDITE SANS LE CONSENTEMENT ÉCRIT DE L'AUTEUR.

NE PAS MESURER LES DESSINS A L'ÉCHELLE

Goodkey Weedmark
Consulting Engineers


GOODKEY WEEDMARK & ASSOCIATES LIMITED

1688 Woodward Dr. Ottawa Ontario Canada K2C 3R8

613 727-5111 Voice
613 727-5115 Fax
www.gwal.com Web

Project north
Nord du projet

Seal/Scelu



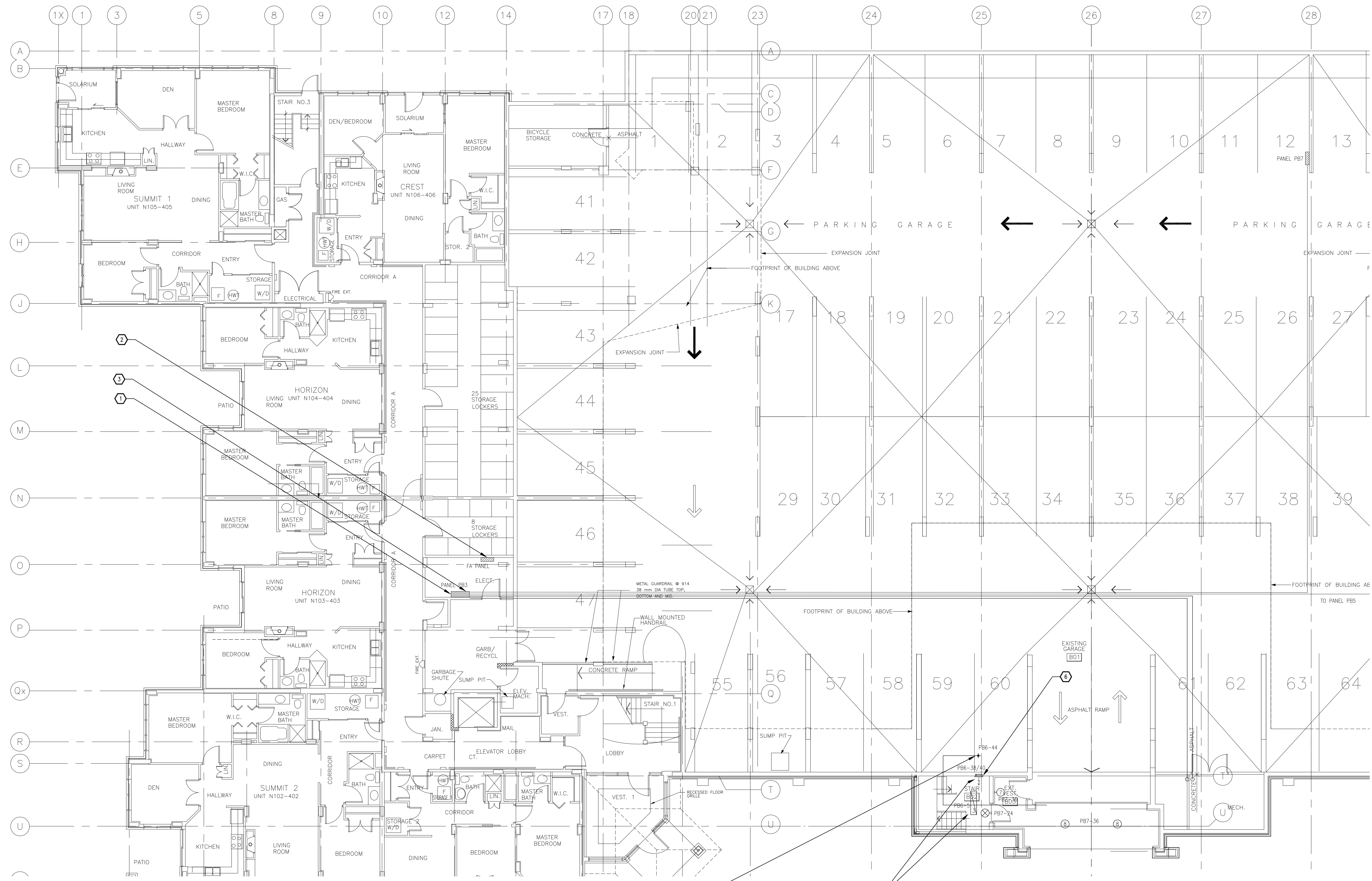
Project/Projet

MERIDIAN RETIREMENT COMMUNITY, FIRE RESTORATION

Drawing title/Titre du dessin

SPECIFICATIONS

Scale/Echelle	AS NOTED	Project no./No. du projet	2019-148
Design par	M.TROTTER	Drawing/Dessin	
Drawn by	L.BECK	E2	
Dessiné par			
Reviewed by	A.MIKHAIEL	Revision no.	OF 4
Examined par		Acad file/Fichier:	
Date	MARCH 2019	Revision no.	-
Date		Acad file/Fichier:	-



- DRAWING NOTES**
- 1 EXISTING FEDERAL PIONEER 120/208V 800A MAIN DISTRIBUTION TO REMAIN. REPLACE 200A 120/208V 3Ø 4W FEEDERS TO PANEL PB6 WITH 4Ø/0. REPLACE ALL DAMAGED AND MISSING CONDUIT. CLEAN CIRCUIT CONDUIT BEFORE PULLING THROUGH.
 - 2 EXISTING MICROM SERIES 9000 FIRE ALARM CONTROL PANEL TO REMAIN OPERATIONAL. PROVIDE NEW STROBE LIGHT SIGNAL CIRCUIT CARD, POWER SUPPLY, ADDITIONAL BATTERY CAPACITY & ANY ADDITIONAL ENCLOSURE REQUIRED FOR NEW STROBE LIGHTS. RETAIN THE SERVICE OF THE MANUFACTURE FOR SYSTEM PROGRAMMING AND VERIFICATION.
 - 3 REPLACE 60A 208V BREAKER FEEDING ROOF TOP UNIT WITH 80A 3Ø BREAKER. PROVIDE NEW 3Ø3 + GND. IN 35MM EMT. REMOVE EXISTING UNDERSIZED CONDUITS.
 - 4 PROVIDE 15A 120V CONNECTION FOR HEAT TRACING CONNECTION, CABLE SUPPLIED BY MECHANICAL, WIRED BY ELECTRICAL.
 - 5 TYPICAL REMOVE, REPLACE ALL DEVICES AND LIGHTING AS INDICATED. VERIFY CIRCUIT CONDITION AND REPLACE AS REQUIRED.
 - 6 PROVIDE NEW 208V, 1Ø, 2KW FORCE FLOW HEATER C/W INTEGRAL THERMOSTAT. CONNECT TO INDICATED CIRCUIT.

Client

DATE	REVISION	REF
2019-03-08	ISSUED FOR TENDER	2
2019-02-11	ISSUED FOR PERMIT/TENDER	1
2019-02-06	ISSUED FOR REVIEW	0

THE ENGINEER WAIVES ANY AND ALL RESPONSIBILITY AND LIABILITY FOR PROBLEMS WHICH ARISE FROM FAILURE TO FOLLOW THESE PLANS, SPECIFICATIONS AND THE DESIGN INTENT THEY CONVEY, OR FOR PROBLEMS WHICH ARISE FROM OTHER FAILURE TO OBEY AND / OR FOLLOW THE ENGINEER'S GUIDANCE WITH RESPECT TO ANY ERRORS, OMISSIONS, INCONSISTENCIES, AMBIGUITIES OR CONFLICTS WHICH ARE ALLEGED.

THIS DRAWING IS THE PROPERTY OF GOODKEY WEEDMARK & ASSOCIATES LIMITED AND ALL COPYRIGHTS ARE RESERVED. NO USE OF THIS DRAWING MAY BE MADE WITHOUT EXPRESS WRITTEN CONSENT.

L'INGÉNIEUR DÉCLINE TOUTE RESPONSABILITÉ DÉCOULANT DE PROBLÈMES FAISANT SUITE AU NON RESPECT DES PLANS, DEVIS ET DE L'INTENTION DU CONCEPT QU'ILS INDICENT OU DE TOUTS LES PROBLÈMES POUVANT RÉSULTER DU DÉFAUT D'OBEISSANCE ET / OU DE SUIVRE LES CONSEILS DE L'INGÉNIEUR EN CE QUI CONCERNE LES ERREURS, OMISSIONS, INCONSISTANCES, AMBIGUITÉS OU CONFLITS ALLEGUÉS.

CE DESSIN EST LA PROPRIÉTÉ LITTÉRAIRE DE GOODKEY WEEDMARK & ASSOCIATES LIMITED ET TOUS LES DROITS SONT RÉSERVÉS. L'UTILISATION EST INTERDITE SANS LE CONSENTEMENT ÉCRIT DE L'AUTEUR.

NE PAS MESURER LES DESSINS À L'ÉCHELLE

Goodkey Weedmark Consulting Engineers

GOODKEY WEEDMARK & ASSOCIATES LIMITED
 1688 Woodward Dr. Ottawa Ontario Canada K2C 3R8
 613 727-5111 Voice
 613 727-5115 Fax
 www.gwal.com Web

Project north Nord du projet

Seal/Scelu

LICENSED PROFESSIONAL ENGINEER
 A.O. MIKHAIEL
 10071099
 13/14/15
 PROVINCE OF ONTARIO

Project/Projet

MERIDIAN RETIREMENT COMMUNITY, FIRE RESTORATION

Drawing title/Titre du dessin

BASEMENT AREA LAYOUT

Scale/Echelle	AS NOTED	Project no./No. du projet	2019-148
Design by/Conçu par	M.TROTIER	Drawing/Desin	E4
Drawn by/Dessiné par	L.BECK	Reviewed by/Examiné par	A.MIKHAIEL
Date	MARCH 2019	Revision no.	-
		Acad file/Fichier	-