

| 2010/12 | 1 | Update |
|---------|-----|----------|
| DATE | No. | REVISION |

NOTES

- MANAGE ALL WALL MORTAR IN STORMONT HALL AS ASBESTOS CONTAINING MATERIAL UNTIL ANALYSIS IS CONDUCTED ON A ROOM-BY-ROOM BASIS PRIOR TO RENOVATIONS.
- COLLECT AND ANALYZE ROOF MATERIALS (ROOF CORES OF FELTS, EDPM, TAR ETC.) FOR THE PRESENCE OF ASBESTOS PRIOR TO RENOVATION/REPLACEMENT.
- ASSUME THAT ALL CHALK BOARDS CONTAIN ASBESTOS UNTIL THEY ARE TESTED.

THIS IS A COPYRIGHTED DRAWING AND DESIGN WHICH SHALL NOT BE USED, REPRODUCED OR REVISED WITHOUT WRITTEN PERMISSION.

THE CONTRACTOR SHALL CHECK AND VERIFY ALL DIMENSIONS AND UTILITY LOCATIONS AND REPORT ALL ERRORS AND OMISSIONS PRIOR TO COMMENCING WORK. THIS DRAWING IS NOT TO BE SCALED.

LEGEND

| | |
|---------------|---|
| T-02520-52A,G | TRG SAMPLE LOCATION |
| 11 | THERMAL INSULATION CONTAINS ASBESTOS |
| 52 | PLASTER CONTAINS ASBESTOS |
| 63 | 12" FLOOR TILES CONTAINS ASBESTOS |
| 66 | LINOLEUM CONTAINS ASBESTOS |
| 47 | MORTAR CONTAINS ASBESTOS |
| 13 | TRANSITE ASBESTOS PRESENT |
| 33 | CEILING TILES CONTAINS ASBESTOS |
| 54 | STUCCO & TEXTURE COAT CONTAINS ASBESTOS |
| 22 | GASKET CONTAINS ASBESTOS |
| 59 | JOINT COMPOUND CONTAINS ASBESTOS |
| 72 | TAR CONTAINS ASBESTOS |
| T | THERMOSTAT CONTAINS MERCURY |
| 1, 2, 4, 6 | ASBESTOS HAZARD RATING |
| W | WATER DAMAGE |
| D | DUCT INSULATION |
| P | PIPE INSULATION |
| F | FITTING INSULATION |
| T | TANK INSULATION |

| | | |
|-------------|---------------|----------------------|
| designed by | scale | 1:200 |
| drawn by | SLC-DS | job no. DSR-10106024 |
| checked by | | drawing no. |
| approved by | | FIG.1 |
| date | DECEMBER 2010 | |

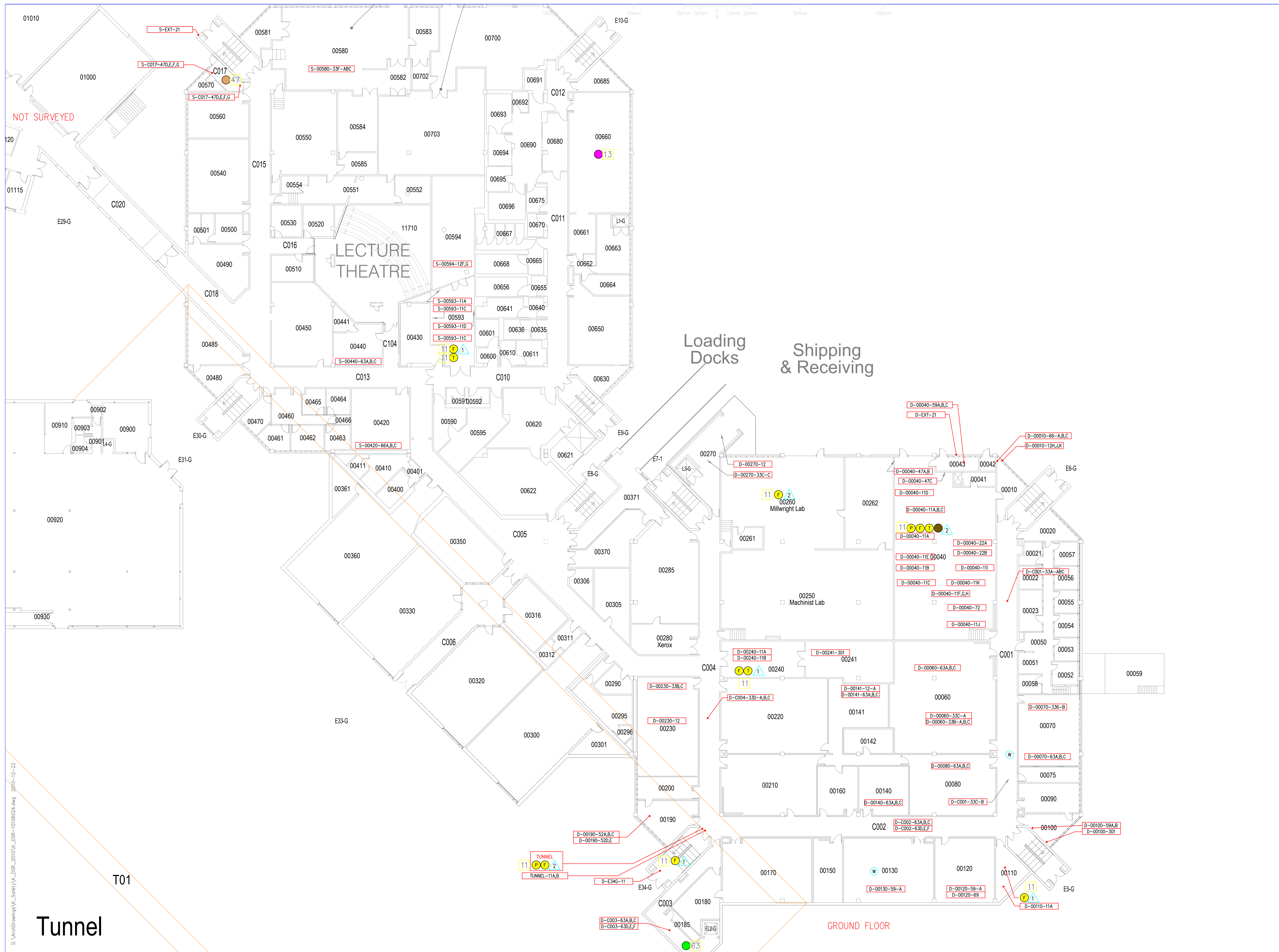
OWNER
ST LAWRENCE COLLEGE

PROJECT
ST LAWRENCE COLLEGE KINGSTON – DESIGNATED SUBSTANCES SURVEY
KINGSTON ONTARIO

TITLE
TECHNOLOGY HALL FIRST FLOOR PLAN & MEZZANINE FLOOR PLAN

ST LAWRENCE COLLEGE FACILITY MANAGEMENT – KINGSTON CAMPUS
KINGSTON BROCKVILLE, CORNWALL
100 PORTSMOUTH AVE, KINGSTON, ON K7L 5A6
TEL: (613) 544-5400
FAX: (613) 545-3908
www.sl.on.ca
EMAIL: plantk@sl.on.ca





- NOTES**
- 1) MANAGE ALL WALL MORTAR IN STORMONT HALL AS ASBESTOS CONTAINING MATERIAL UNTIL ANALYSIS IS CONDUCTED ON A ROOM-BY-ROOM BASIS PRIOR TO RENOVATIONS.
 - 2) COLLECT AND ANALYZE ROOF MATERIALS (ROOF CORES OF FELTS, EDPM, TAR ETC.) FOR THE PRESENCE OF ASBESTOS PRIOR TO RENOVATION/REPLACEMENT.
 - 3) ASSUME THAT ALL CHALK BOARDS CONTAIN ASBESTOS UNTIL THEY ARE TESTED.

- LEGEND**
- T-02520-52A,G TRG SAMPLE LOCATION
 - 11 THERMAL INSULATION CONTAINS ASBESTOS
 - 52 PLASTER CONTAINS ASBESTOS
 - 63 12" FLOOR TILES CONTAINS ASBESTOS
 - 66 LINOLEUM CONTAINS ASBESTOS
 - 47 MORTAR CONTAINS ASBESTOS
 - 13 TRANSITE ASBESTOS PRESENT
 - 33 CEILING TILES CONTAINS ASBESTOS
 - 54 STUCCO & TEXTURE COAT CONTAINS ASBESTOS
 - 22 GASKET CONTAINS ASBESTOS
 - 59 JOINT COMPOUND CONTAINS ASBESTOS
 - 72 TAR CONTAINS ASBESTOS
 - T THERMOSTAT CONTAINS MERCURY
- ASBESTOS HAZARD RATING**
- 1, 2, 4, 6
- INSULATION**
- W WATER DAMAGE
 - D DUCT INSULATION
 - P PIPE INSULATION
 - F FITTING INSULATION
 - T TANK INSULATION

REVISION 1 Drawing Update by St. Lawrence College Tech. David Seaton

| 2010/12 | 1 | Update |
|---------|-----|----------|
| DATE | No. | REVISION |

THIS IS A COPYRIGHTED DRAWING AND DESIGN WHICH SHALL NOT BE USED, REPRODUCED OR REVISED WITHOUT WRITTEN PERMISSION.

THE CONTRACTOR SHALL CHECK AND VERIFY ALL DIMENSIONS AND UTILITY LOCATIONS AND REPORT ALL ERRORS AND OMISSIONS PRIOR TO COMMENCING WORK. THIS DRAWING IS NOT TO BE SCALED.

| | | |
|-------------|---------------|----------------------|
| designed by | scale | 1:200 |
| drawn by | SLC-DS | job no. DSR-10106024 |
| checked by | | drawing no. |
| approved by | | FIG.2 |
| date | DECEMBER 2010 | |

OWNER
ST LAWRENCE COLLEGE

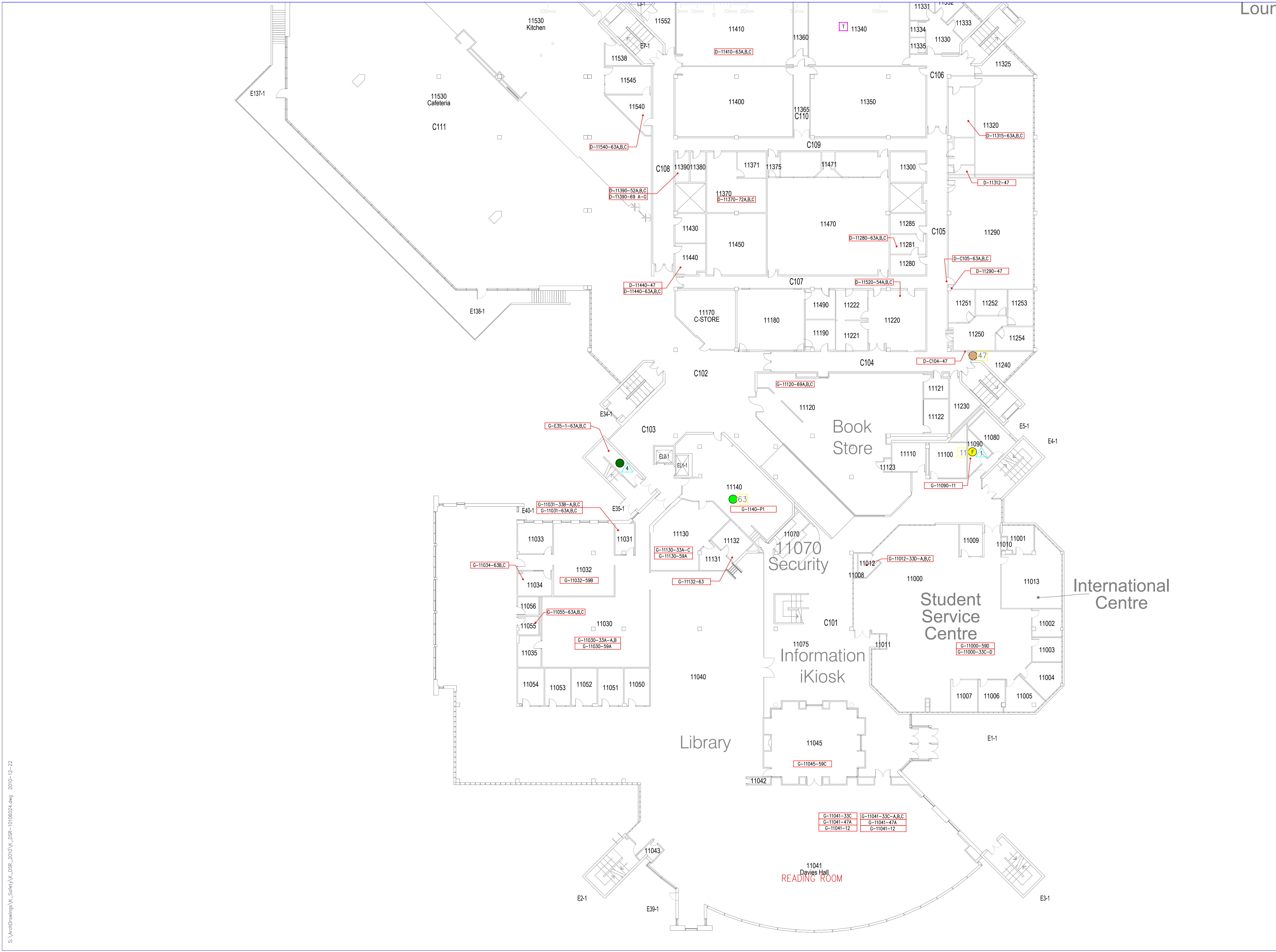
PROJECT
**ST LAWRENCE COLLEGE
KINGSTON – DESIGNATED
SUBSTANCES SURVEY**
KINGSTON ONTARIO

TITLE
**STORMONT AND DUNDAS HALLS
GROUND FLOOR PLAN**

ST LAWRENCE COLLEGE
FACILITY MANAGEMENT – KINGSTON CAMPUS
KINGSTON BROCKVILLE CORNWALL
100 PORTSMOUTH AVE. KINGSTON, ON K7L 5A6
TEL: (613) 544-5400
FAX: (613) 545-3908
www.sl.on.ca
EMAIL: plantk@sl.on.ca



S:\ArchDrawings\Survey\2010\DSR_10106024.dwg 2010-12-22



NOTES

- MANAGE ALL WALL MORTAR IN STORMONT HALL AS ASBESTOS CONTAINING MATERIAL UNTIL ANALYSIS IS CONDUCTED ON A ROOM-BY-ROOM BASIS PRIOR TO RENOVATIONS.
- COLLECT AND ANALYZE ROOF MATERIALS (ROOF CORES OF FELTS, EPDM, TAR ETC.) FOR THE PRESENCE OF ASBESTOS PRIOR TO RENOVATION/REPLACEMENT.
- ASSUME THAT ALL CHALK BOARDS CONTAIN ASBESTOS UNTIL THEY ARE TESTED.

LEGEND

T-02520-52A,G TRG SAMPLE LOCATION

- 11 THERMAL INSULATION CONTAINS ASBESTOS
- 52 PLASTER CONTAINS ASBESTOS
- 63 12" FLOOR TILES CONTAINS ASBESTOS
- 66 LINOLEUM CONTAINS ASBESTOS
- 47 MORTAR CONTAINS ASBESTOS
- 13 TRANSITE ASBESTOS PRESENT
- 33 CEILING TILES CONTAINS ASBESTOS
- 54 STUCCO & TEXTURE COAT CONTAINS ASBESTOS
- 22 GASKET CONTAINS ASBESTOS
- 59 JOINT COMPOUND CONTAINS ASBESTOS
- 72 TAR CONTAINS ASBESTOS
- T THERMOSTAT CONTAINS MERCURY

ASBESTOS HAZARD RATING

- 1, 2
- 4, 6

W WATER DAMAGE
 D DUCT INSULATION
 P PIPE INSULATION
 F FITTING INSULATION
 T TANK INSULATION

REVISION 1 Drawing Update by St. Lawrence College Tech. David Seaton

| 2010/12 | 1 | Update |
|---------|-----|----------|
| DATE | No. | REVISION |

THIS IS A COPYRIGHTED DRAWING AND DESIGN WHICH SHALL NOT BE USED, REPRODUCED OR REVISED WITHOUT WRITTEN PERMISSION.

THE CONTRACTOR SHALL CHECK AND VERIFY ALL DIMENSIONS AND UTILITY LOCATIONS AND REPORT ALL ERRORS AND OMISSIONS PRIOR TO COMMENCING WORK. THIS DRAWING IS NOT TO BE SCALED.

| | | |
|-------------|---------------|----------------------|
| designed by | scale | 1:200 |
| drawn by | SLC-DS | job no. DSR-10106024 |
| checked by | | drawing no. |
| approved by | | FIG.4 |
| date | DECEMBER 2010 | |

OWNER
ST LAWRENCE COLLEGE

PROJECT
ST LAWRENCE COLLEGE KINGSTON – DESIGNATED SUBSTANCES SURVEY
 KINGSTON ONTARIO

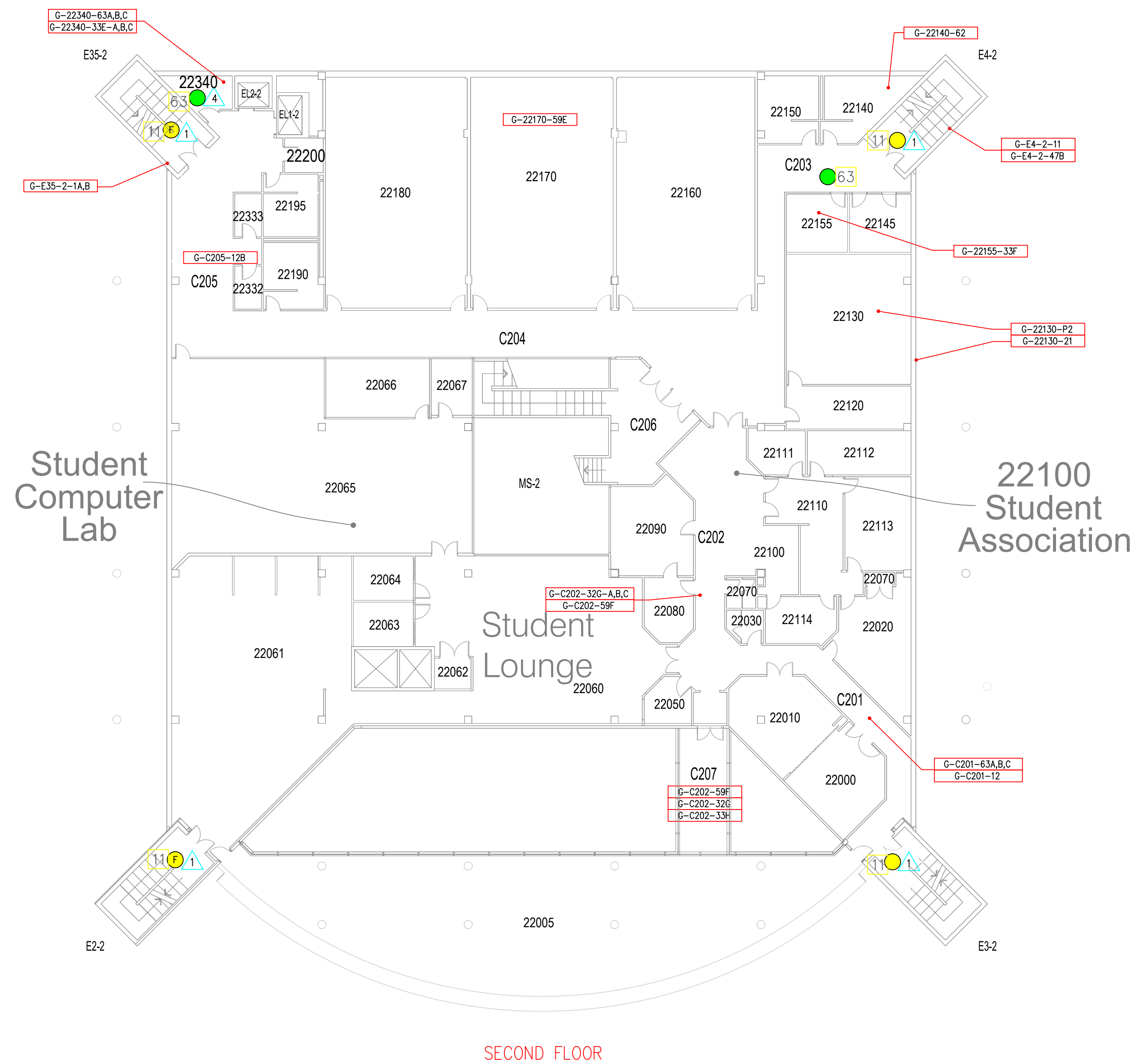
TITLE
DUNDAS AND GLENGARRY HALLS – FIRST FLOOR PLAN

ST LAWRENCE COLLEGE
 FACILITY MANAGEMENT – KINGSTON CAMPUS
 KINGSTON BROCKVILLE, CORNWALL
 100 PORTSMOUTH AVE, KINGSTON, ON K7L 5A6
 TEL: (613) 544-5400
 FAX: (613) 545-3908
 www.sl.on.ca
 EMAIL: plantk@sl.on.ca

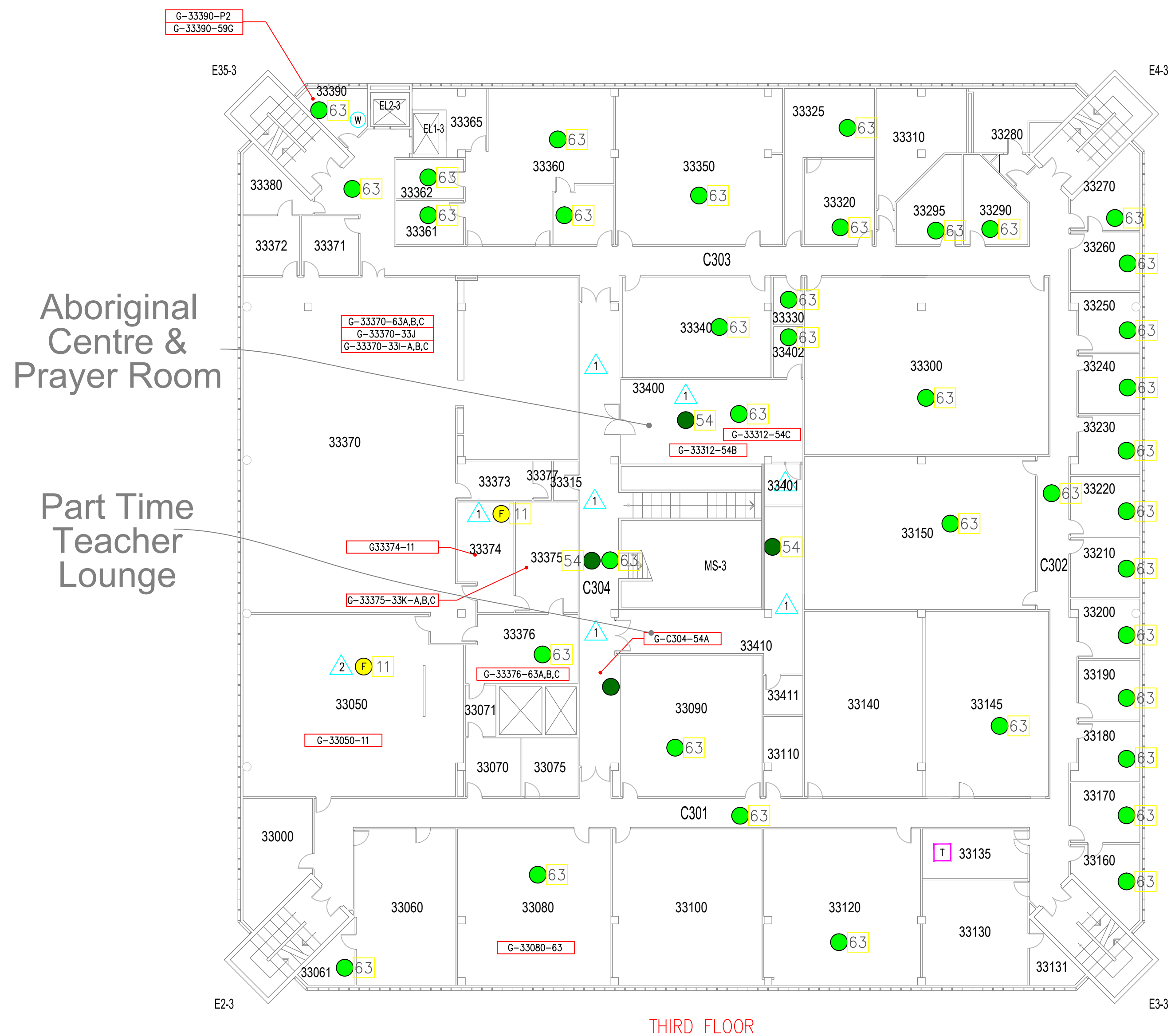
St. Lawrence College
Dream it. Then live it.

S:\ArchDrawings\K_Survey\K_DSR_2010\K_DSR-10106024.dwg 2010-12-22

100mm 50mm 20mm 10mm 0 10mm 20mm 50mm 100mm



SECOND FLOOR



THIRD FLOOR

NOTES

- 1) MANAGE ALL WALL MORTAR IN STORMONT HALL AS ASBESTOS CONTAINING MATERIAL UNTIL ANALYSIS IS CONDUCTED ON A ROOM-BY-ROOM BASIS PRIOR TO RENOVATIONS.
- 2) COLLECT AND ANALYZE ROOF MATERIALS (ROOF CORES OF FELTS, EPDM, TAR ETC.) FOR THE PRESENCE OF ASBESTOS PRIOR TO RENOVATION/REPLACEMENT.
- 3) ASSUME THAT ALL CHALK BOARDS CONTAIN ASBESTOS UNTIL THEY ARE TESTED.

LEGEND

- T-02520-52A,G TRG SAMPLE LOCATION
 - 11 THERMAL INSULATION CONTAINS ASBESTOS
 - 52 PLASTER CONTAINS ASBESTOS
 - 63 12" FLOOR TILES CONTAINS ASBESTOS
 - 66 LINOLEUM CONTAINS ASBESTOS
 - 47 MORTAR CONTAINS ASBESTOS
 - 13 TRANSITE ASBESTOS PRESENT
 - 33 CEILING TILES CONTAINS ASBESTOS
 - 54 STUCCO & TEXTURE COAT CONTAINS ASBESTOS
 - 22 GASKET CONTAINS ASBESTOS
 - 59 JOINT COMPOUND CONTAINS ASBESTOS
 - 72 TAR CONTAINS ASBESTOS
 - T THERMOSTAT CONTAINS MERCURY
- ASBESTOS HAZARD RATING
- 1
 - 2
 - 4
 - 6
- W WATER DAMAGE
 D DUCT INSULATION
 P PIPE INSULATION
 F FITTING INSULATION
 T TANK INSULATION

REVISION 1 Drawing Update by St. Lawrence College Tech. David Seaton

| DATE | No. | REVISION |
|---------|-----|----------|
| 2010/12 | 1 | Update |

THIS IS A COPYRIGHTED DRAWING AND DESIGN WHICH SHALL NOT BE USED, REPRODUCED OR REVISED WITHOUT WRITTEN PERMISSION.
 THE CONTRACTOR SHALL CHECK AND VERIFY ALL DIMENSIONS AND UTILITY LOCATIONS AND REPORT ALL ERRORS AND OMISSIONS PRIOR TO COMMENCING WORK. THIS DRAWING IS NOT TO BE SCALED.

| | | |
|-------------|---------------|----------------------|
| designed by | scale | 1:200 |
| drawn by | SLC-DS | job no. DSR-10106024 |
| checked by | | drawing no. |
| approved by | | FIG.5 |
| date | DECEMBER 2010 | |

OWNER
ST LAWRENCE COLLEGE

PROJECT
**ST LAWRENCE COLLEGE
 KINGSTON -- DESIGNATED
 SUBSTANCES SURVEY**
 KINGSTON ONTARIO

TITLE
**GLENGARRY HALL
 2nd & 3rd FLOOR PLANS**

ST LAWRENCE COLLEGE
 FACILITY MANAGEMENT - KINGSTON CAMPUS
 KINGSTON BROCKWALL, CORNWALL
 100 PORTSMOUTH AVE, KINGSTON, ON K7L 5A6
 TEL: (613) 544-5400
 FAX: (613) 545-3908
 www.sl.on.ca
 EMAIL: plantk@sl.on.ca



