

Submittal #2

Friday, July-12-19

CONTRACTOR:
Soubliere Interiors Ltd.
3085 Green Pine Court
Cumberland, ON
K4C 1R9

PROJECT :
Meridian
Ottawa, ON

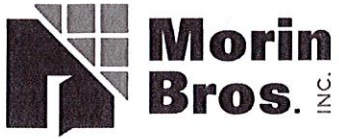
SHOP DRAWING REVIEW

REVIEWED
REVIEWED AS NOTED
REVISE AND RESUBMIT



"This review is for the sole purpose of ascertaining conformance with the general design concept for architectural features only, and does not in any way constitute review of the design of engineering elements which form part of the Contract Documents prepared by others. This review shall not mean that the Architect approves the detail design inherent in the shop drawings. This responsibility shall remain with the Contractor submitting same, and such review shall not relieve the Contractor of his responsibility for errors or omissions in the shop drawings or of his responsibility for meeting all requirements of the Contract Documents. The Contractor is responsible for dimensions to be confirmed and correlated at the job site, for information that pertains solely to fabrication processes, or to techniques of construction and installation and for co-ordination for the work of all trades."

By: Bryan Bonell Date: July 16, 2019
HOBIN ARCHITECTURE INCORPORATED



Building Supplies

Walls & Ceilings Specialists
Spécialistes des murs et plafonds

7 Tristan Court - Nepean ON - K2E 8A4
613 224 9980 - info@morinbros.ca

Index

Drywall

- ① M2 TECH - Moisture resistant GYP Board.
- ② Glas Roc - Weather resistant Sheathing GYP Board.



Building Supplies

Walls & Ceilings Specialists
Spécialistes des murs et plafonds

7 Tristan Court - Nepean ON - K2E 8A4
613 224 9980 - info@morinbros.ca

Drywall

CertainTeed

M2TECH®

Regular & Type X Gypsum Board

Product Data and Submittal

Product Description

M2Tech® gypsum boards are moisture and mold resistant and are designed for use on interior walls and ceilings; specially engineered to provide enhanced moisture and mold resistance. They have a specially formulated moisture resistant core and are enclosed in a 100% recycled moisture and mold resistant light violet colored face paper and bronze colored back paper. M2Tech Gypsum Boards may be finished, painted textured or wallpapered using regular gypsum board techniques.

Basic Uses

M2Tech Gypsum Board is used for interior walls and ceilings in standard residential, commercial or institutional applications. It can be used for new construction or renovations over wood or steel framing. It is typically nailed or screwed to studs spaced 16" (400 mm) or 24" (610 mm) o.c., but can be applied by laminating or with the use of an adhesive. M2Tech Type X Gypsum Board is used for the above mentioned applications requiring fire ratings.

Advantages

- Fire resistance ratings up to four hours (M2Tech Type X)
- M2Tech technology provides additional zone of protection against moisture and mold
- Achieves best possible score of 10 for mold resistance per ASTM D3273*
- Achieves best possible score of 0 for mold resistance per ASTM G21*

- GREENGUARD® Gold Certified
- Less than 5% water absorption by weight after 2-hour immersion, as per ASTM C473 test method
- Uniformly flat, attractive appearance; no shadows
- High edge hardness
- No wavy edges, warps, bows or deformities
- Uniform high-strength cores eliminate crumbling, cracking
- Edge tapers consistent to form perfect joints
- Excellent thermal barrier and sound attenuation qualities

Limitations

- Avoid exposure to water or excessive moisture during transportation, storage, handling, during or after installation. Good design and construction practices that prevent water and moisture exposure of building products are the most effective strategy to avoid the growth of mold.
- Not recommended for exterior application (Exterior Soffits and Ceilings are permitted for M2Tech products from specific mfg. plants - see CertainTeed sales representative).
- CertainTeed Moisture and Mold Resistant gypsum board is not recommended for areas which will be continuously wet or subjected to high humidity such as saunas, steam rooms or gang showers.

- Exposure to continuous moisture or extreme temperatures should be avoided.
- Not recommended for continuous exposure to temperatures exceeding 125°F (52°C).
- Ceiling framing spacing should not exceed 16" (400 mm) o.c. for 1/2" M2Tech with water-based texture finish; 24" o.c. (610 mm) for 1/2" M2Tech Regular without water-based texture finish; 24" o.c. (610 mm) for 5/8" M2Tech Type X. Applied perpendicular to framing.
- Wall framing spacing should not exceed 24" (610 mm) o.c.
- Store indoors and off ground surface.
- Boards should be stacked flat with care taken to prevent sagging or damage to edges, ends and surfaces.
- Storing board lengthwise leaning against the framing is not recommended.
- Boards should be carried, not dragged, to place of installation to prevent damaging finished edges.
- Cutting and scoring should be done from the face side.
- In cold weather or during joint finishing temperatures within the enclosure should stay within the range of 50° to 95°F (10° to 35°C) and with sufficient ventilation to carry off excess moisture.

Continued on back

Job Name _____

Contractor _____

Date _____

Products Specified: _____

CertainTeed
SAINT-GOBAIN

Product data

Thickness: 1/2" (12.7 mm) Regular
5/8" (15.9 mm) Type X

Width: 4' (1220 mm) standard

Length: 8', 10', 12' standard
(2440 mm, 3050 mm, 3660 mm)

Weights (nominal):
1/2" Regular - 1.6 psf (7.8 kg/m²)
5/8" Type X - 2.2 psf (10.7 kg/m²)

Custom lengths available upon request.
Contact the nearest Sales Office for
stocked lengths available.

Edge: Tapered

Technical Data

Composition and Materials

Manufactured panel with gypsum core,
encased in paper. Various additives are
added to the core to enhance moisture
and fire resistive qualities.

Surface Burning Characteristics

CertainTeed Moisture and Mold Resistant
gypsum board has a Flame Spread
ratings of 5 and Smoke Developed
ratings of 5 when tested in accordance
with ASTM E84, (UL 723, NFPA 255,
CAN/ULC-S102).

Fire Resistance

Fire resistance tests are conducted in
accordance with ASTM E119,
(ANSI/UL263, NFPA 251, CAN/ULC-
S101) and no warranty is made other
than conformance to the standard under
the assembly. Minor discrepancies may
exist in the values of ratings, attributable
to changes in materials and standards,
as well as differences between the

testing facilities. Assemblies are listed
as "combustible" (wood framing) and
"noncombustible" (concrete and/or
steel construction). For fire resistance
ratings, refer to the Gypsum Association
Fire Resistance Design Manual and UL
Fire Resistance Directory - Vol. 1 or
ULC Fire Resistance List of Equipment
and Materials.

M2Tech Type X products are
included in UL / cUL / ULC Type
Designations listed in Fire
Resistance Directories - Type X and
Type X-1.

Applicable Standards and References

- Meets ASTM C1396 and
CAN/CSA-A82.27
- ASTM C840
- CAN/CSA-A82.31 Gypsum Board
Application
- Gypsum Association GA-216
- Gypsum Association GA-214
- ICC International Building Code (IBC)
- ICC International Residential Code (IRC)
- National Building Code of Canada
(NBCC)

Installation Recommendations

Installation of M2Tech Gypsum Board
should be consistent with methods
described in the standards and references
noted. Cutting should be from the face
side of the boards for best results.

Decoration

M2Tech Gypsum Board accepts most
types of paints, texture and wall covering
materials. The surface shall be primed

and sealed with a full-bodied latex
primer before applying a final decorative
material. This will equalize the suction
between the joint compounds and the
paper surface.

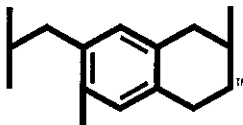
For best painting results, all surfaces,
including joint compound, should be
clean, dust-free and not glossy. If glossy
paints are used, a thin skim coat of
compound over the entire surface, Level
5 finish, is recommended to reduce
highlighting or joint photographing.
This method is also recommended for
areas of critical sidelighting of natural or
artificial light sources.

A sealer application under wallpaper or
other wall covering is also recommended
so the board surface will not be damaged,
if the covering is subsequently removed
during redecorating. Joint treatment must
be thoroughly dry before proceeding
with primer-sealer application and final
decoration.

* The performance of CertainTeed
Moisture and Mold Resistant gypsum
board in actual use may not accurately
reproduce the results achieved in this
ASTM laboratory test. Good design and
construction practices that prevent water
and moisture exposure of building
products are the most effective strategy
to avoid the growth of mold.

Notice

The information in this document is
subject to change without notice.
CertainTeed assumes no responsibility
for any errors that may inadvertently
appear in this document.



Health Product
DECLARATION

The Health Product Declaration™ and
logo is owned by the Health Product
Declaration Collaborative™ and is
used with permission.



CertainTeed Corporation

ROOFING • SIDING • TRIM • DECKING • RAILING • FENCE • GYPSUM • CEILINGS • INSULATION

20 Moores Road Malvern, Pa 19355 Professional: 800-233-8990 Consumer: 800-782-8777 certainteed.com

CertainTeed GlasRoc®

Embedded Glass Reinforced Gypsum Sheathing

Product Data and Submittal

Product Description

GlasRoc® Sheathing and GlasRoc Sheathing Type X are high-performance, weather-resistant gypsum sheathing boards produced with CertainTeed's patented Embedded Glass Reinforced Gypsum Technology.*

GlasRoc Sheathing Type X has a specially formulated core for use in fire resistance rated designs.

Basic Uses

GlasRoc Sheathing boards are approved substrates by the major EIFS manufacturers, one-coat and conventional stucco systems, traditional cladding systems, exterior ceilings, soffit systems and exterior curved applications.

GlasRoc Sheathing Type X can be used in fire resistance rated exterior assemblies.

Advantages

- Will withstand up to twelve months of exposure to typical weather conditions such as UV, rain, wind, ice and snow.
- Superior water resistance which does not impede vapor transmission.
- Improved physical performance compared to paper-faced and glass mat-faced gypsum sheathing products.
- Dimensionally stable under changes in temperature and relative humidity.
- Due to its embedded glass mats, GlasRoc Sheathing resists delamination, deterioration, warping and job site damage.
- Will not contribute to mold growth.
- Noncombustible.
- No special tools or fasteners required for installation.
- Embedded glass mats reduce irritating glass fiber exposure for friendlier installation.

Limitations

- Framing spacing should not exceed 24" (600 mm) o.c.
- Must not be installed below grade.
- GlasRoc Sheathing boards should not be used as a nailing base.
- Application to framing by adhesive only is not recommended.
- Boards should be stacked flat with care taken to prevent sagging or damage to edges, ends and surfaces.

Composition and Materials

GlasRoc Sheathing boards are paperless gypsum panels with a water-resistant core and embedded glass mats which lie beneath a layer of gypsum, covered with an innovative acrylic coating. GlasRoc Sheathing Type X incorporates additives to enhance its fire resistive qualities.

Product Data

Thicknesses: 1/2" (12.7 mm), 5/8" (15.9 mm)

Widths: 4' (1220 mm) standard

Lengths: 8' (2440 mm) standard
Custom lengths available

Edges: Square

Packaging: Per piece

Technical Data

Surface Burning Characteristics

GlasRoc Sheathing boards have a Flame Spread rating of 0 and Smoke Developed rating of 0, in accordance with ASTM E84 (UL723 and CAN/ULC-S102M).

Noncombustibility

Noncombustible when tested in accordance with ASTM E136.

Fire Resistance

Fire resistance tests are conducted in accordance with ASTM E119, (ANSI/UL 263, NFPA 251, CAN/ULC-S101) and no warranty is made other than conformance to the standard under which the assembly was tested. Minor discrepancies may exist in the values of ratings, attributable to changes in materials and standards, as well as differences between testing facilities. Assemblies are listed as "combustible" (wood framing) and "non-combustible" (concrete and/or steel construction). For fire resistance ratings, refer to the Gypsum Association Fire Resistance Design Manual, UL Fire Resistance Directory - Vol. 1, and ULC Fire Resistance Directory (List of Equipment and Materials).

UL/ULC Type Designations:

EGRG or GlasRoc or GlasRoc Sheathing Type X

Applicable Standards and Code Compliance

GlasRoc Sheathing boards meet ASTM C1177 and applicable sections of ASTM C1396.

CCMC Evaluation Listing # 13095-L
NYC MEA # 312-03-M

Ontario Minister Ruling No: 05-17-141 (13095-R)

UL Evaluation Report UL ER3660-01

Continued on back

Job Name

Contractor

Date

Products Specified:

CertainTeed
SAINT-GOBAIN

Storage

Store materials protected against damage from weather, direct sunlight, surface contamination, construction traffic, or other causes. Stack sheathing flat on level supports off the ground, under cover and fully protected from weather. Store and support boards in flat stacks to prevent sagging. Protect materials to keep them dry. Protect boards to prevent damage to edges and surfaces. Comply with Gypsum Association GA-801.

Installation

Recommendations

Comply with Gypsum Association GA-253, ASTM C1280, manufacturer's written instructions and local building codes.

Cut boards at penetrations, edges and other obstructions; fit tightly against abutting constructions, unless otherwise indicated.

Install boards with a 3/8" (9 mm) setback where nonload-bearing constructions abut structural elements. Install boards with a 1/4" (6 mm) setback where they abut masonry or similar materials that might retain moisture, to prevent wicking.

Coordinate GlasRoc Sheathing installation with flashing and joint sealant installation so these materials are installed in sequence and in a manner that prevents exterior moisture from passing through the completed exterior wall assembly.

Apply fasteners so heads bear tightly against face of the GlasRoc Sheathing boards but do not cut into the facers. Do not bridge building expansion joints with GlasRoc Sheathing; cut and space edges to match spacing of structural support elements.

Horizontal Installation

Install GlasRoc Sheathing with long edges in contact without forcing. Abut ends of boards over centers of stud flanges, and stagger end joints of adjacent boards not

less than one stud spacing. Attach boards at perimeter and within field of board to each stud.

Space fasteners a maximum of 8" (200 mm) o.c. (tighter spacing if recommended by manufacturer for specific application or UL/ULC fire-rated assembly details) and a minimum of 3/8" (9 mm) from edges and ends of boards.

Treat board joints, when required by local building code or exterior finish system, per manufacturer's written instructions.

No joint treatment or weather-resistant barrier is required for the applicability of the GlasRoc product exposure warranty.

Notice

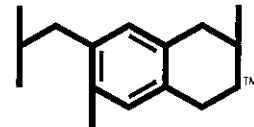
The information in this document is subject to change without notice. CertainTeed assumes no responsibility for any errors that may inadvertently appear in this document.

PHYSICAL PROPERTIES	1/2" (12.7 mm) GlasRoc® Sheathing	5/8" (15.9 mm) GlasRoc® Sheathing Type X	Test Method
Nominal Width	48" (1220 mm)	48" (1220 mm)	—
Standard Lengths	8' (2440 mm)**	8' (2440 mm)**	—
Face Surface	Acrylic/Gypsum	Acrylic/Gypsum	—
Weight - lb/square foot (kg/m ²)	1.9 (9.3)	2.4 (11.7)	—
Bending Radius - Dry, Lengthwise	4' (1220 mm)	6' (1829 mm)	—
Racking Strength - lb/Lin.Ft. - (kN/m) Ultimate Value	540 (7.88)	654 (9.54)	ASTM E72
Parallel Flexural Strength - lb (N)	100 (445)	135 (600)	ASTM C473
Humidified Deflection (Sag)	1/16" (1.6 mm)	1/64" (0.4 mm)	ASTM C473
Permeance - perms (ng/Pa·s·m ²)	26 (1500)	21 (1200)	ASTM E96
"R" Value - sq.ft.·h·°F/Btu (K·m ² /W)	0.45 (0.079)	0.57 (0.100)	ASTM C518
Flame Spread/Smoke Developed	0/0	0/0	ASTM E84 / CAN/ULC-S102M
Combustibility:	Noncombustible	Noncombustible	ASTM E136
Thermal Coefficient of Linear Expansion - in./in./°F (mm/mm/°C)	9.3 x 10 ⁻⁶ (16.7 x 10 ⁻⁶)	9.3 x 10 ⁻⁶ (16.7 x 10 ⁻⁶)	ASTM E228
Mold Resistant Ratings	10/1***	10/1***	ASTM D3273 / D7855

*Covered by U.S. Patent No. 6,524,679; 6,878,321; 6,866,492, and other patents pending.

**Other lengths available. Ask your CertainTeed Sales Representatives.

***No mold growth detected. Note that 10 and 1 are the highest ratings possible for ASTM D3273 and ASTM D7855, respectively.



Health Product
DECLARATION

The Health Product Declaration™ and logo is owned by the Health Product Declaration Collaborative™ and is used with permission.



ASK ABOUT ALL OF OUR OTHER CERTAINTEED® PRODUCTS AND SYSTEMS:

ROOFING • SIDING • TRIM • DECKING • RAILING • FENCE
GYPSUM • CEILINGS • INSULATION

www.certainteed.com <http://blog.certainteed.com>

CertainTeed Corporation
20 Moores Road
Malvern, PA 19355

Professional: 800-233-8990
Consumer: 800-782-8777

© 01-2008 CertainTeed Gypsum. Rev 01-2016
Printed in the U.S.A. on recycled paper. CTG-2359/1M

SAINT-GOBAIN