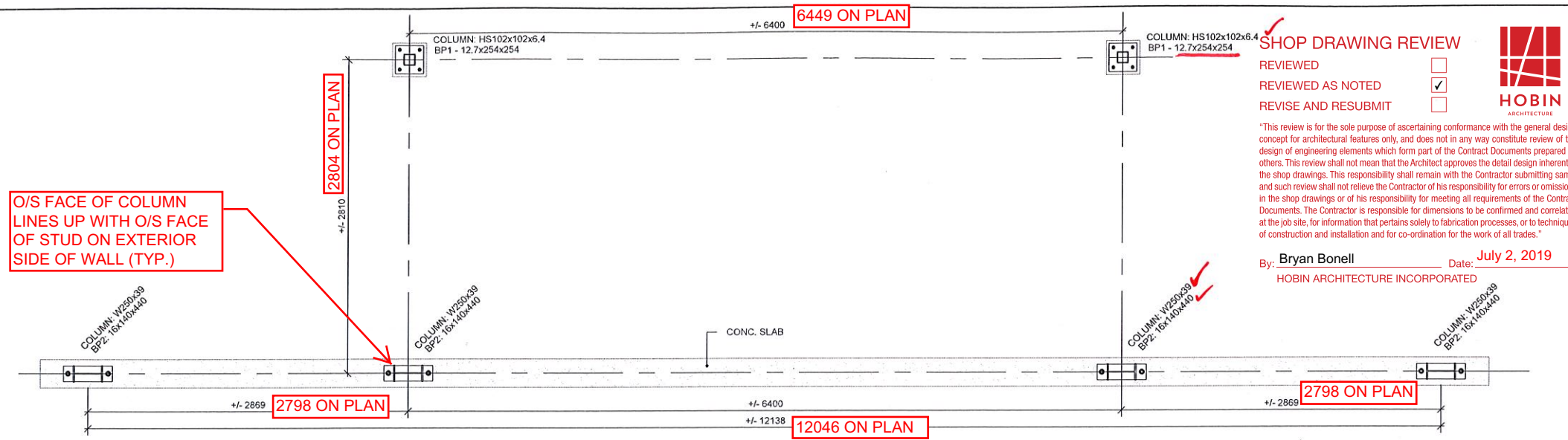


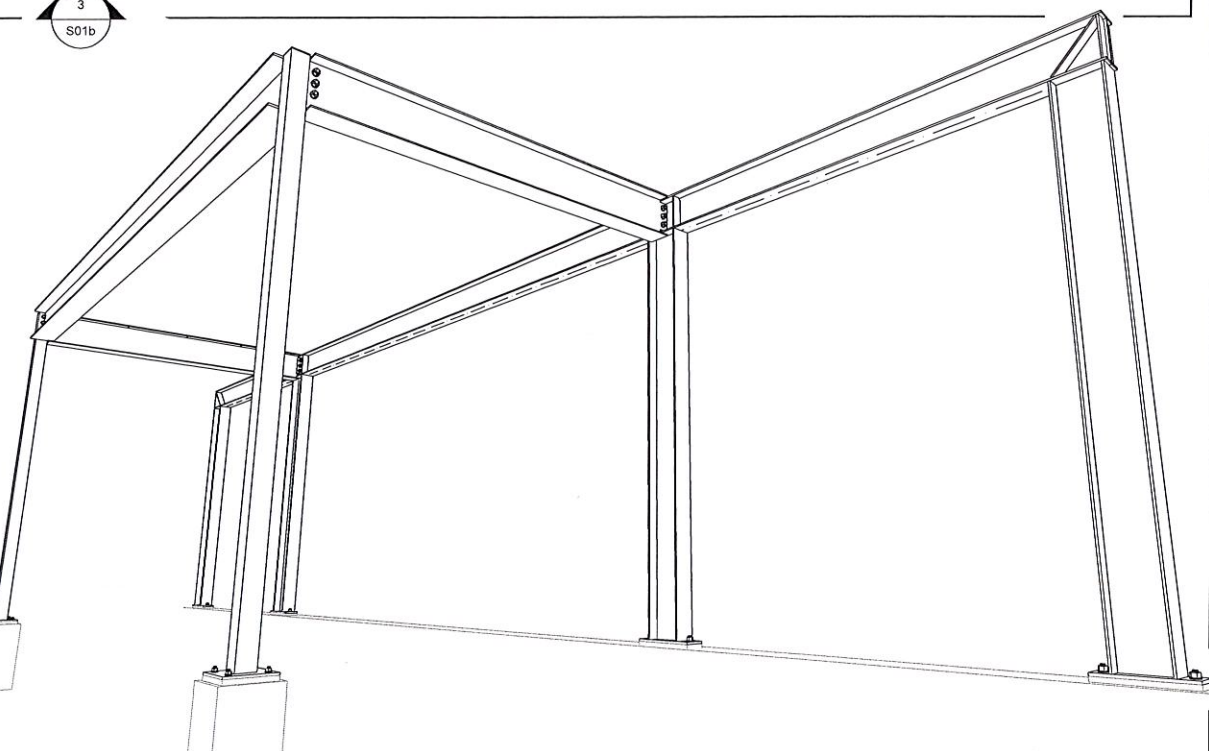
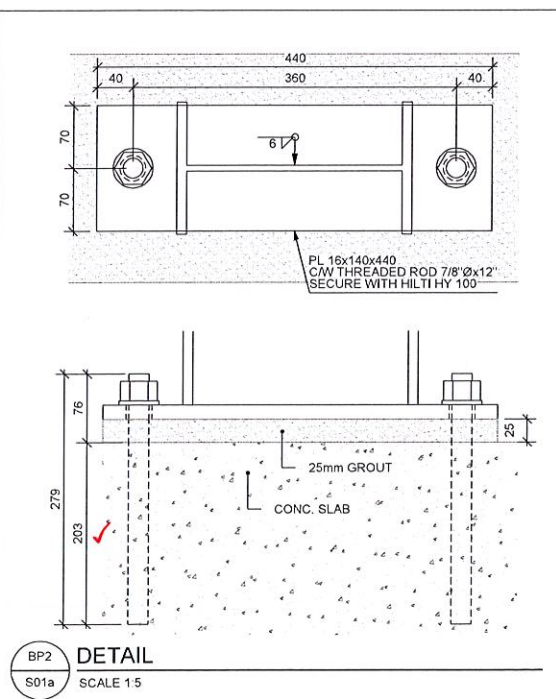
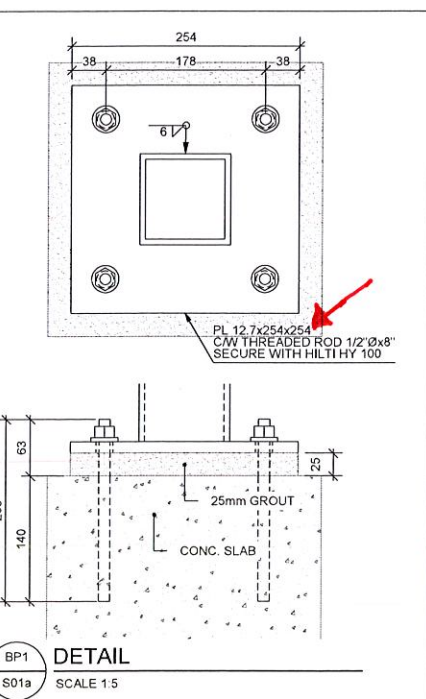
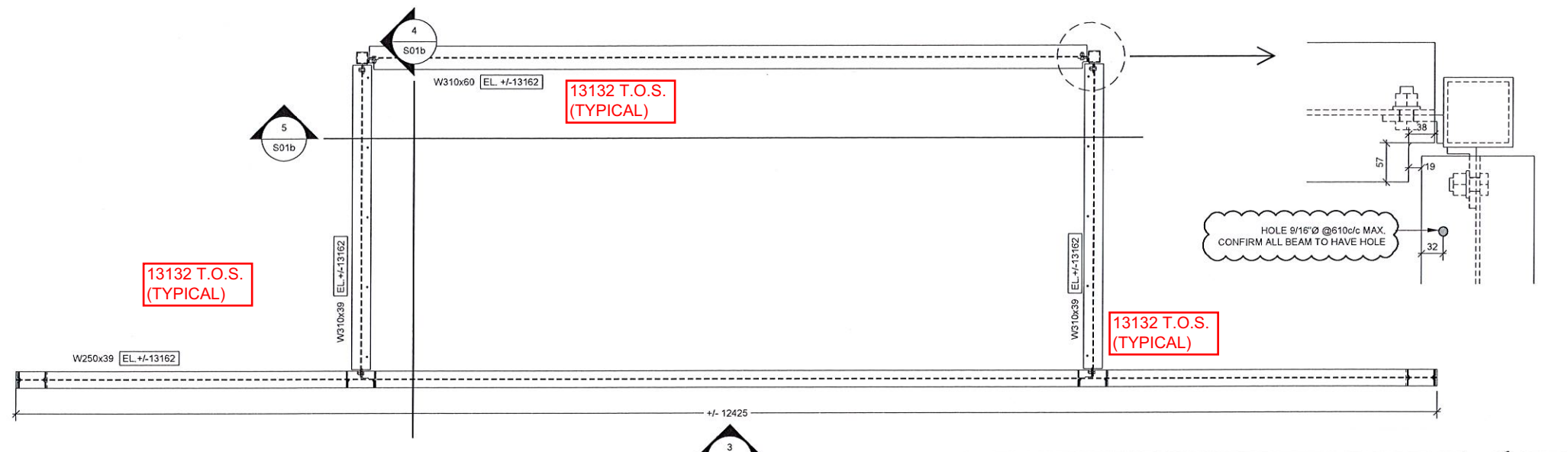
PLAN VIEW - AT ANCHOR LEVEL
SCALE 1:30

1
S01a



PLAN VIEW - AT TOP OF STEEL LEVEL
SCALE 1:30

2
S01a



GENERAL NOTES

- MATERIALS: UNLESS NOTED OTHERWISE
 - HSS = A500 (GRADE C) / G40.21M 350W (SQUARE/REC. 345MPa ROUND 317 MPa)
 - BEAM "W" = G40.21M 350W
 - ALL OTHERS STEEL = G40.21M 300W
- WELDING STANDARD:
 - STEEL = CSA W47.1/W59
 - ALUMINIUM = CSA W47.2/W59.2
- CONNECTOR: UNLESS NOTED OTHERWISE
 - STRUCTURAL BOLT = ASTM A325
 - NONSTRUCTURAL BOLT = ASTM A307
 - THREADED ROD = ASTM A307
 - NELSON STUDS = AC 1020
 - REBAR = G40.21M 400W
- MATERIALS / COATING:
 - STEEL / PRIMED ✓

LEGEND:

| | |
|--------|-----------------|
| T.O.S. | TOP OF STEEL |
| U/S | UNDER SIDE |
| BPL | BASEPLATE |
| TBC | TO BE CONFIRMED |
| TYP | TYPICAL |
| EL | ELEVATION |
| CONC | CONCRETE |
| C/W | COMPLETE WITH |

- NOTES:
- (0.) CONFIRM STEEL BEAM TO HAVE HOLE
 - (1.) ALL ELEVATION AND DIMENSION TO BE CONFIRMED ON SITE OR ELSE ✓

• Received from Marc Marine on 28-Jun-2019.
 • Reviewed by FB(TALCO) on 28-Jun-2019.

FORMAT: 18"x24"

| REV. | Date | Description |
|------|------------|---------------------|
| 0 | 2019-05-28 | ISSUED FOR APPROVAL |

Projet: No. Projet: 72062_01

MERIDIAN PLACE

Titre: CANOPY

Client: TAL-CO

Détaillé par: S.LACHAPPELLE

Vénié par:

Gérant de projet: M.LAUZON

Sceau:



Révision: 0

No. Page: S01a

