

# SUPPLEMENTAL INSTRUCTION



CONTRACTOR:  
Tal-co Building Innovations Ltd.  
Suite A, 4728 Bank Street  
Ottawa, ON K1T 3W7

PROJ.: Meridian Community  
Building Rebuild  
PROJ. No.: 1841  
DATE: July 3, 2019  
S.I. No. S.I. – A003

Supplemental Instructions are issued only for the purpose of recording any clarification or interpretation of the contract documents or giving direction on problems resulting from field conditions. These instructions are subject to the provisions of the contract documents and unless stated herein and specifically co-authorized by the Client, will not affect the contract. Should the Contractor require a change in the contract price or project schedule, he shall submit to the Architect within ten (10) days of the date hereof, an itemized proposal. If the proposal is accepted by the Client, this Supplemental Instruction will be superseded by a Change order.

## 3.1 TITLE

Typical Window Jamb Detail at Masonry Veneer

## 3.2 REFERENCE

A2.02 Ground Floor Plan  
A2.03 Ground Floor Dimension Pan

## 3.3 DESCRIPTION OF THE WORK

.1 Refer to the attached sketch ASK-SI-A003.1 for the typical jamb detail at windows in exterior walls with brick cladding. The detail reflects the typical Jeld-wen jamb section, including the nailing flange and brick mould. Please note that the window dimensions shown on drawing A2.03 are masonry opening dimensions.

## 3.4 ATTACHMENTS

ASK-SI-A003.1 Typical Window Detail at Masonry

## 3.5 REASON

Shop drawing coordination with selected window product.

### Partners

Barry J. Hobin  
OAA, FRAIC, Hon. Fellow AIA

William A. Davis  
OAA, MRAIC, Associate AIA

Gordon Lorimer  
OAA, FRAIC, Associate AIA

Wendy Brawley  
OAA, MRAIC, Associate AIA

Douglas Brooks  
Senior Arch. Tech.

### Directors

Marc Thivierge  
OAA, MRAIC

Reinhard Vogel  
Senior Arch. Tech.

### Associates

Bryan Bonell  
OAA, MRAIC, Associate AIA

William Ritcey  
MRAIC

Dan Henhoeffler  
Senior Arch. Tech.

### Hobin Architecture Incorporated

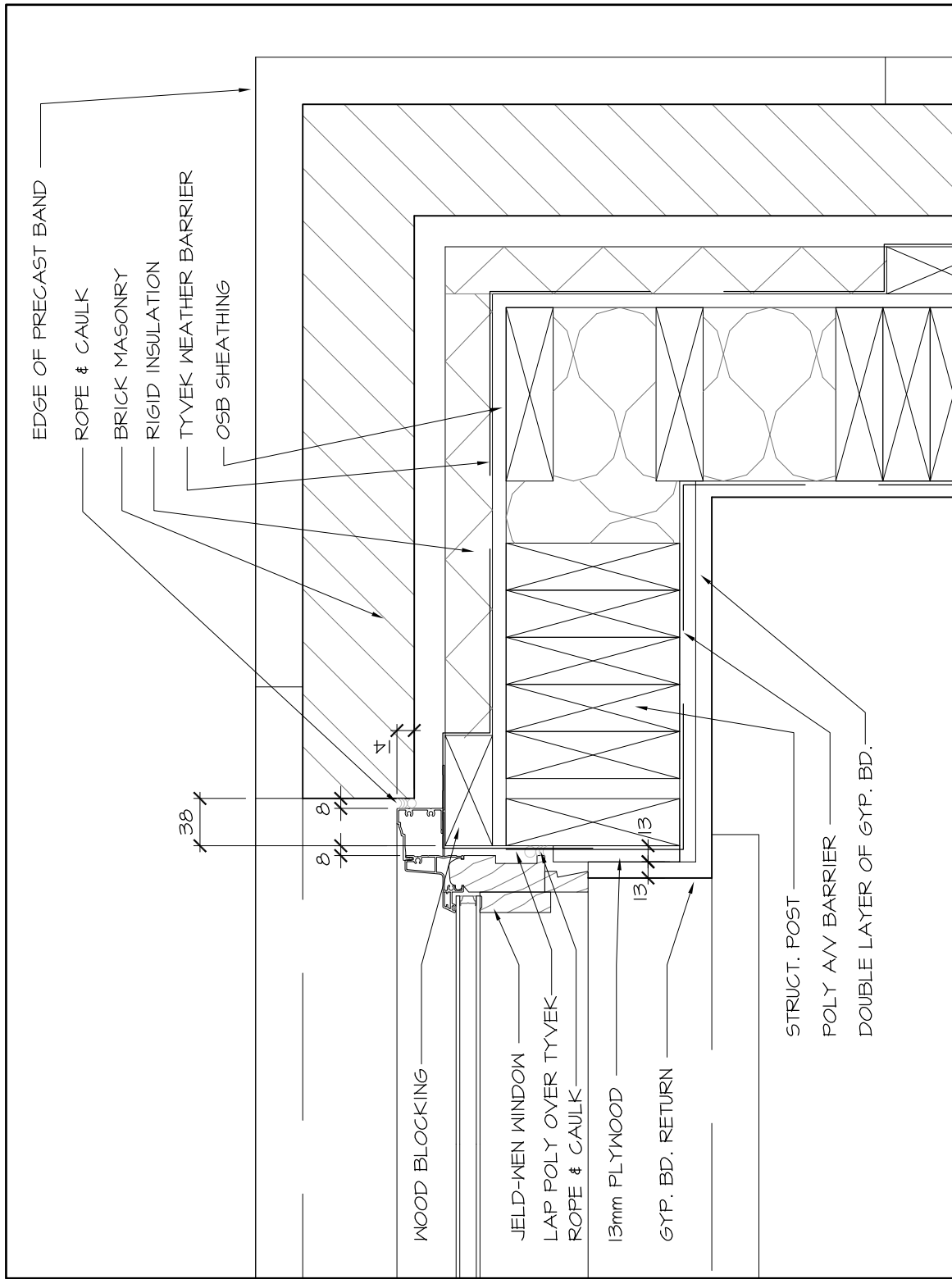
63 Pamilla Street  
Ottawa, Ontario  
Canada K1S 3K7

t 613-238-7200  
f 613-235-2005

[hobinarc.com](http://hobinarc.com)

Distribution:

Owner       City Authority       Electrical       Struct.       Landscaping  
 Contractor       File       Mech.       Civil       Other



PROJECT / LOCATION:  
**MERIDIAN PLACE  
 COMMUNITY BLDG. REBUILD**  
 1 & 3 Meridian Place

**Hobin Architecture Incorporated**  
 63 Pamilla Street T: 613-238-7200  
 Ottawa, ON K1S 3K7 F: 613-235-2005  
**hobinarc.com** E: mail@hobinarc.com

DRAWING NAME:  
**TYPICAL WINDOW  
 DETAIL AT  
 MASONRY**

DATE:  
 19/07/03

PROJECT NO.:  
 1841

DRAWN BY:  
 BB

ASK NO.

SCALE:  
 1:5

**ASK-SI-A03.1**