

**ST MARY CATHOLIC SCHOOL
EXTERIOR HANDRAIL SHOP DRAWING REVIEW**

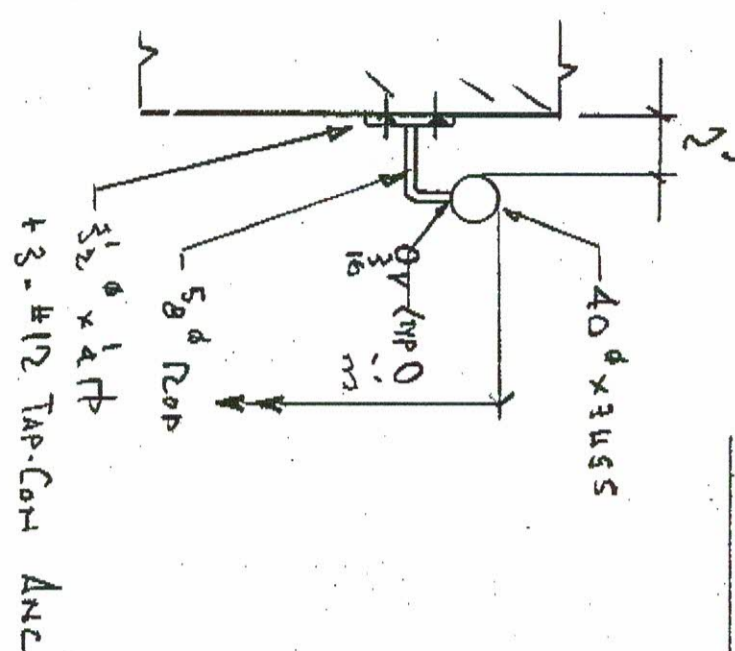
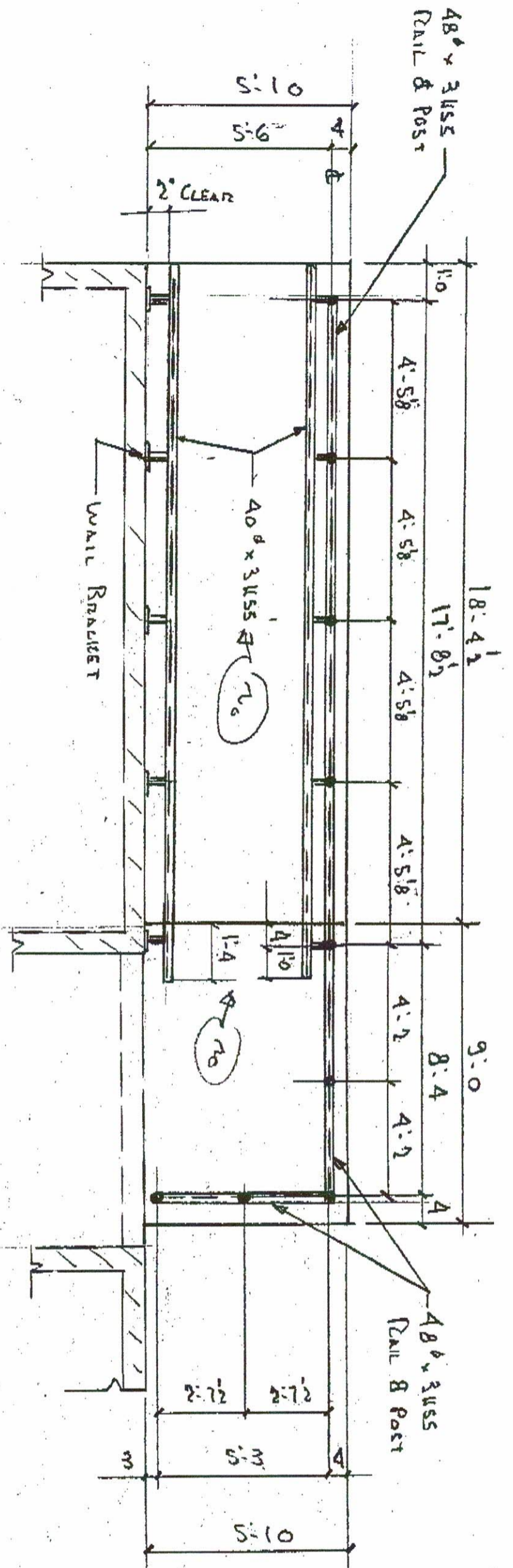
Tal-co Building Innovations Review by Farah Bano on April 18, 2019

1. Final Dimensions to be site verified.

From: Michael Marsolais [mailto:michael.marsolais@cdsbeo.on.ca]
Sent: April-18-19 9:36 AM
To: Farah Bano <fbano@tal-co.com>
Subject: FW: [EXTERNAL]FW: SMCS - Exterior Handrail Shop Drawings

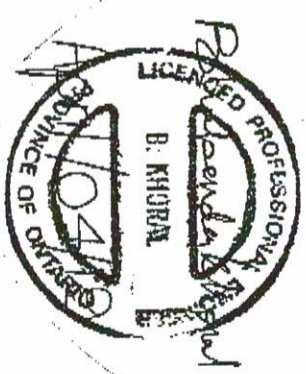
From: Matt Morris [mailto:matt@morriseng.ca]
Sent: April 16, 2019 4:29 PM
To: Michael Marsolais <michael.marsolais@cdsbeo.on.ca>
Subject: [EXTERNAL]FW: SMCS - Exterior Handrail Shop Drawings

SUBMITTAL / SHOP DRAWING REVIEW	
This submittal/shop drawing review is for general conformance with drawings and specifications only. Contractor is completely responsible for all dimensions, details, quantities, supply, installation and construction. This review does not in any way relieve the Contractor of responsibility for compliance with the Contract Documents.	
Client:	Catholic District School Board of Eastern Ontario
Project:	St. Mary Catholic School Carleton Place, Ontario
Submittal:	Exterior Handrail
Notes:	- Clear width at the level area of the ramp shall be 1670mm from exterior wall to edge of railing (shown as 1652mm) - Please verify clear ramp width dimension
MORRIS ENGINEERING LTD. 68 William Street, Suite 200, Brockville, Ontario (613)499-2077	

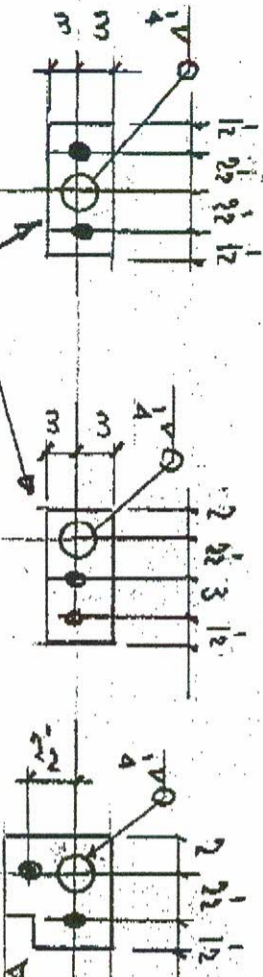
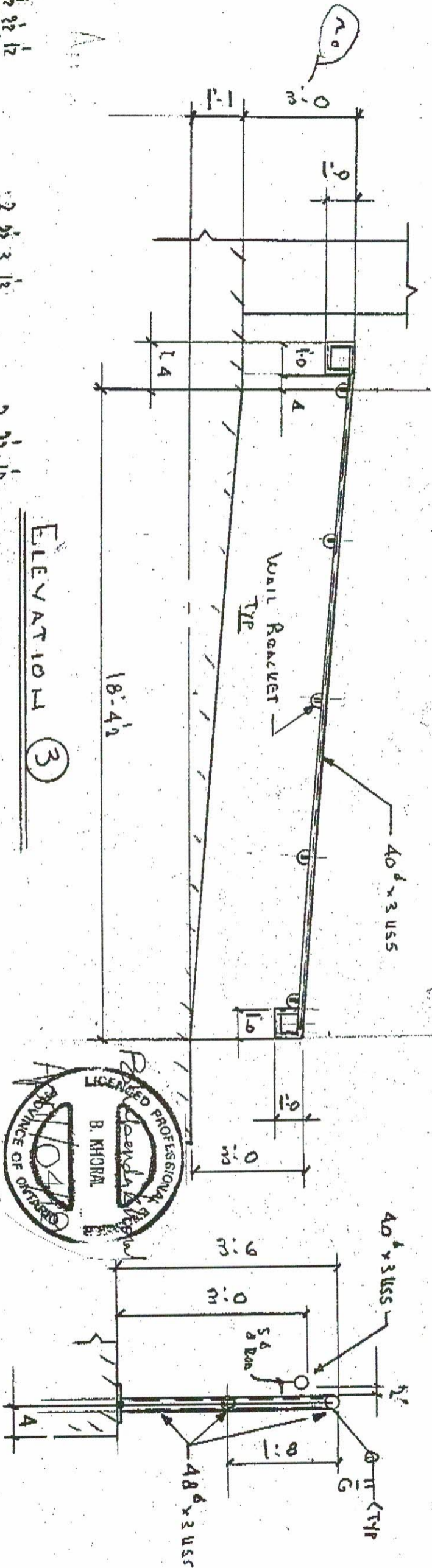
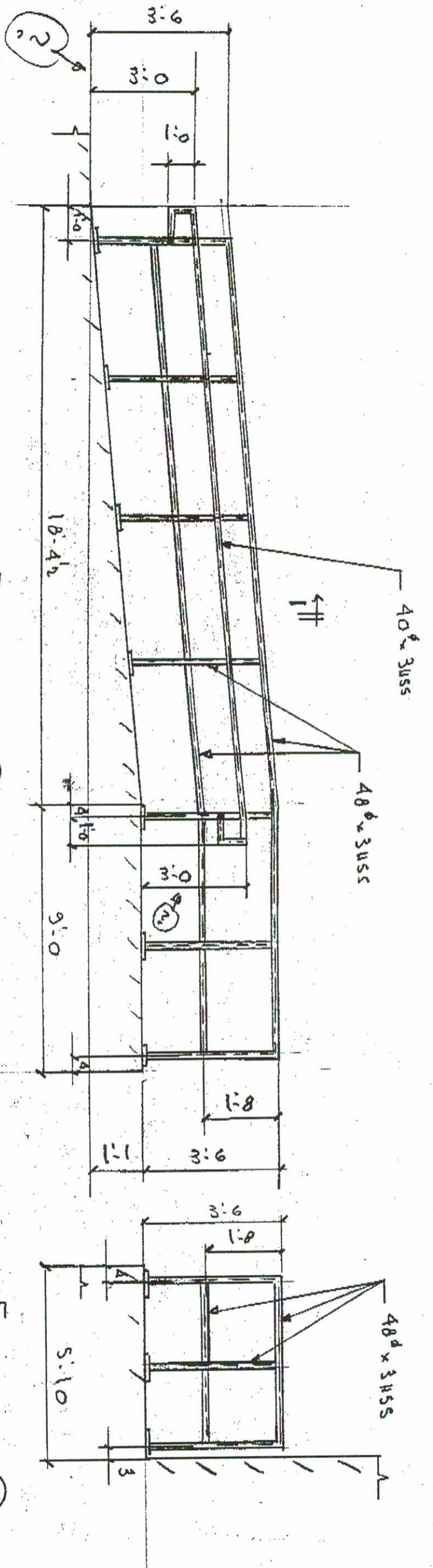


TYPICAL Wall Bracket Detail

DESIGN LOAD ON GUARDS
 - 0.75kN/m OR 1.0kN HORIZ. LOAD APPLIED AT REQUIRED HEIGHT OF 1070mm FROM BASE OF GUARDS
 - SECTION 4.1.5.14(1)(C)-OBC 2012
 OR
 - 1.50kN/m VERT. LOAD APPLIED ON TOP OF GUARDS
 - SECTION 4.1.5.14(4)-OBC 2012
 DESIGN LOAD ON HANDRAILS
 - 0.70kN/m OR 0.9kN LOAD APPLIED AT ANY POINT IN ANY DIRECTION
 - SECTION 3.4.5.5(12)-OBC 2012



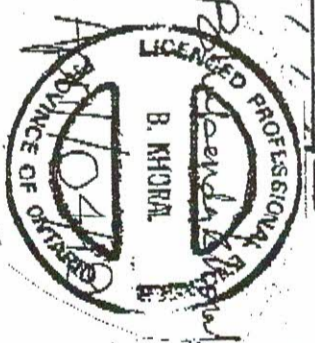
		BLACK ANVIL		Project ST. MARYS - HAWTHORNE AVE Title PLAN - RAMP RAIL B DETAILS Drawn NP Chk CD Date APRIL/19	Cont. Dwg No MI
---	--	--------------------	--	--	--------------------



TYPICAL BASE PLATE DETAILS
 12# UTLTL HAS
 40# ANCHORS
 20 EMBED

ALL ANCHORS GALVANIZED

DESIGN LOAD ON GUARDS
 - 0.75KN/m OR 1.0KN HORIZ. LOAD APPLIED AT REQUIRED HEIGHT OF 1070mm FROM BASE OF GUARDS
 - SECTION 4.1.5.14(1)(c)-OBC 2012
 OR
 - 1.50KN/m VERT. LOAD APPLIED ON TOP OF GUARDS
 - SECTION 4.1.5.14(4)-OBC 2012
 DESIGN LOAD ON HANDRAILS
 - 0.70KN/m OR 0.9KN LOAD APPLIED AT ANY POINT IN ANY DIRECTION
 - SECTION 3.4.8.5(12)-OBC 2012



SECTION 1-1

	Project ST. MARYS - HAWTHORNE AVE		Cont.
	Title RAIL ELEV 8 - DETAILS		Dwg No
	Drawn AP	Chk CD	Date APRIL 19
			M-2