

# CONTEMPLATED CHANGE ORDER



CONTRACTOR:  
Tal-co Building Innovations Ltd.  
Suite A, 4728 Bank Street  
Ottawa, ON K1T 3W7

PROJ.: Meridian Community  
Building Rebuild  
PROJ. No.: 1841  
DATE: Aug. 28, 2019  
C.C.O. No. 015

Pursuant to GC 6.2 – Change Orders in CCDC 2 – 2008, the following items are proposed changes to the contract for this project. Unless noted below, work is not to proceed until authorized by a Change Order. All material and workmanship are to be as described in the contract documents unless otherwise stated. Please submit an itemized quotation for changes to the contract value and/or to the project schedule, within 10 calendar days of the date hereon.

## Partners

Barry J. Hobin  
OAA, FRAIC, Hon. Fellow AIA

William A. Davis  
OAA, MRAIC, Associate AIA

Gordon Lorimer  
OAA, FRAIC, Associate AIA

Wendy Brawley  
OAA, MRAIC, Associate AIA

Douglas Brooks  
Senior Arch. Tech.

## Directors

Marc Thivierge  
OAA, MRAIC

Reinhard Vogel  
Senior Arch. Tech.

## Associates

Bryan Bonell  
OAA, MRAIC, Associate AIA

William Ritcey  
MRAIC

Dan Henhoeffler  
Senior Arch. Tech.

## 15.1 TITLE

Terrace Planting

## 15.2 REFERENCE

Landscape CCO-L-01

## 15.3 DESCRIPTION OF WORK

.1 Refer to the attached Landscape Contemplated Change Order CCO-L-01 by CSW for the landscape requirements of this CCO.

## 15.4 ATTACHMENTS

Landscape CCO-L-01

## 15.5 REASON

Site conditions.

A handwritten signature in black ink that reads "Bryan Bonell".

Bryan Bonell

## Hobin Architecture Incorporated

63 Pamilla Street  
Ottawa, Ontario  
Canada K1S 3K7

t 613-238-7200

f 613-235-2005

[hobinarc.com](http://hobinarc.com)

# CONTEMPLATED CHANGE ORDER 01



319 McRae Ave  
Suite 502  
Ottawa, Ontario  
CANADA, K1Z 0B9  
TEL: 1(613) 729-4536  
FAX: 1 (613) 729-3018

PROJECT NAME: The Meridian  
CONTRACTOR: D&G Landscaping Inc.  
PROJECT #: 2005-01

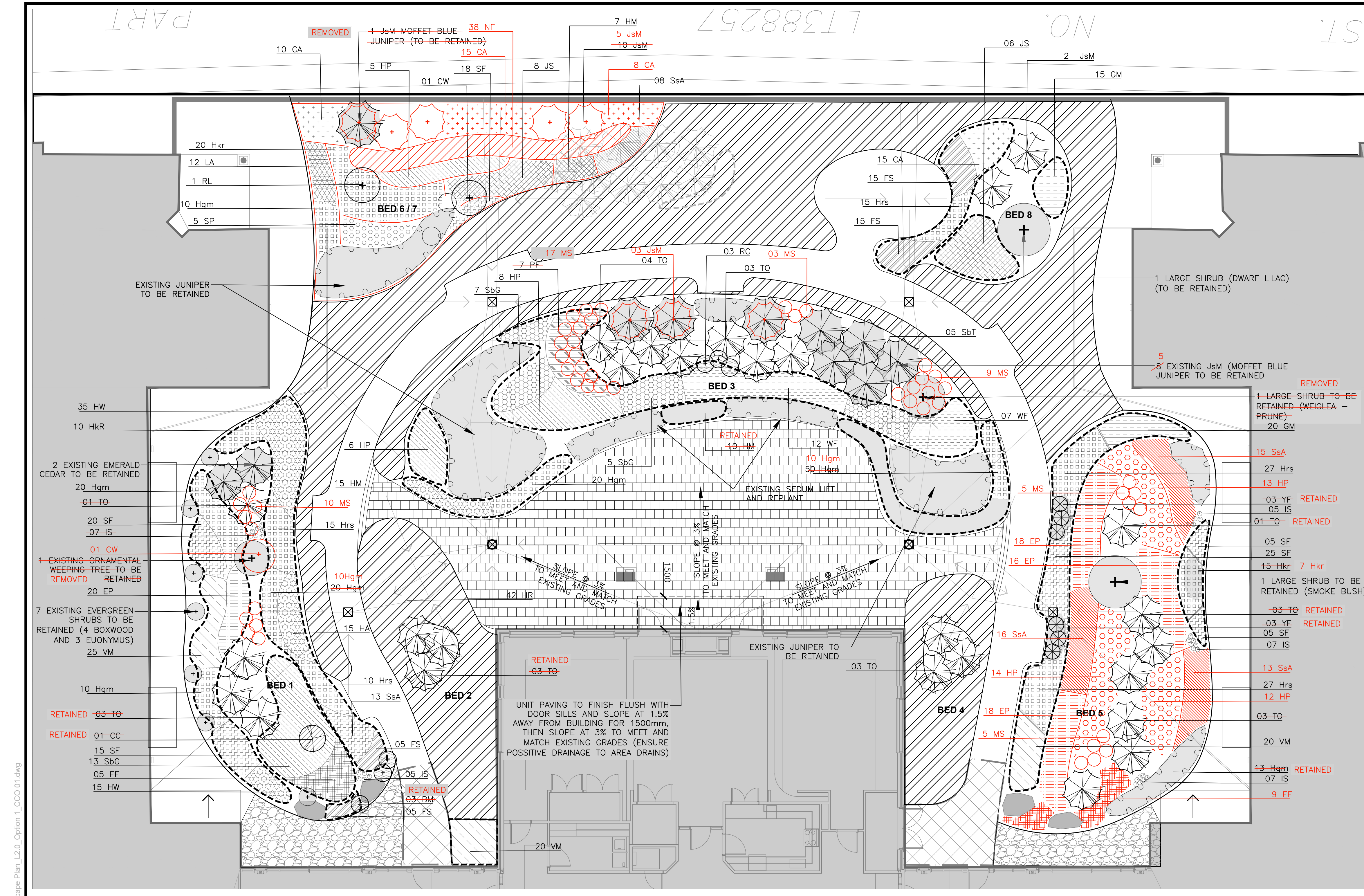
CHANGE TITLE: Terrace Planting  
ATTENTION: Doug Clunie

ISSUED TO:	(DG) Doug Clunie – D&G (FB) Farah Bano – Tal-Co (BB) Brian Bonell – Hobin Architecture	DATE ISSUED:	22 Aug 2018
COPIED:	(JW) Judi Wright – Meridian Board (SR) Scott Rolofs – ClaimsPro	AUTHOR:	Sheri Edwards
		REFERENCE ATTACHED:	Drawing: L2.0 Landscape Plan Option 1 – Issue 03

The following contemplates a change to the contract for this project. Work is not to proceed until authorized by a signed Change Order. All materials and workmanship are to be described as per the contract documents unless otherwise stated. The contractor shall submit an itemized quotation for changes to the contract value and/or the project schedule within fourteen (14) days. Value quotations shall exclude harmonized sales tax (HST) but shall include all other applicable taxes and fees.

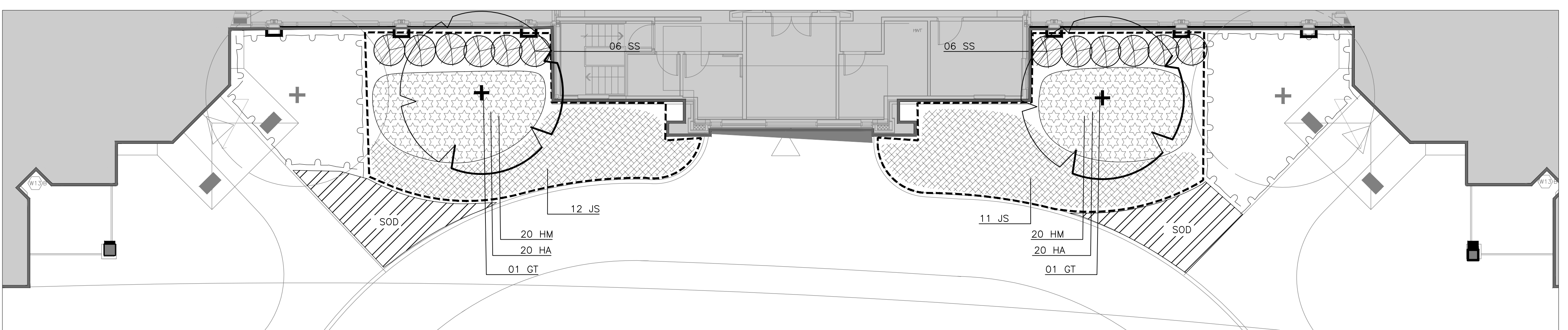
ITEM	DESCRIPTION	PRICE
1.0	<b>General:</b> As per Landscape Field Review 01 - Site conditions were found to have changed since the site was first reviewed in October / November 2018. Drawing L2.0 issue 03 has been revised to reflect the different plant material that was able to be retained and additional material that was required to be removed. An updated plant schedule is included for review/ pricing.	
1.1	<b>Terrace Planting:</b> Review and provide quotation for changes identified on attached drawing L2.0 issue 03 which includes changes to existing planting that has been retained / removed and provides an updated planting schedule to suit revised site conditions. (Note: Beds 6 and 7 have been combined to form one planting bed, however the overall sq.m. of planting area remains the same. For Bed 5, an additional 90 sq.m. of bed preparation and new planting is required).	
1.2	<b>Terrace Paving:</b> Lift and relay 155 m <sup>2</sup> existing unit paving to remove excessive weed growth and ensure even pathway surface with secure edging to planting beds. (Provide additional bedding sand/crushed stone as required).	

END CCO 01



1 UPPER TERRACE – EXISTING CONDITIONS

Scale: 1:100



2 GROUND LEVEL – EXISTING CONDITIONS

Scale: 1:100

Meridian at Centrepoint - Plant List - Replace as per Existing					
Code	Qty.	Botanical Name	Common Name	Size	Remarks
<b>GROUND FLOOR</b>					
GT	2	Gleditsia triacanthos "Shademaster"	Shademaster Honeylocust	70mm cal	B&B staked
<b>SHRUBS</b>					
JS	23	Juniperus sabina "Calgary Carpet"	Calgary Carpet Juniper	500mm spd.	Potted
SS	12	Sorbaria sorbifolia	False Spirea	500mm ht.	Potted
<b>PERENNIALS</b>					
HM	40	Hemerocallis "Miniature King"	Miniature King Daylily	#1 container, heavy 2 fan division	
HW	40	Hemerocallis "Little Wine Cup"	Little Wine Cup Daylily	#1 container, heavy 2 fan division	
<b>ROOF DECK</b>					
<b>SHRUBS</b>					
BM	3	Buxus microphylla "Little Gem"	Boxwood	450mm height	Potted (OMIT 3)
CW	1	Caragana arborescens "Walker"	Weeping Peashrub	1500mm height	Potted
CC	1	Cotinus coggygria	Smoke Bush	900mm height	Potted (OMIT 1)
EF	14	Euonymus fortunei "Emerald Gaiety"	Winter Creeper	450mm height	Potted (ADD 9)
HP	58	Hydrangea paniculata "Little Lime"	Little Lime Hydrangea	450mm height	Potted (ADD 39)
JS	14	Juniperus sabina "Calgary Carpet"	Calgary Carpet Juniper	450mm spread	Potted
JSM	10	Juniperus scopularum "Moffett"	Moffat Blue Juniper	1800mm height	Potted (OMIT 2)
PF	7	Potentilla fruticosa "Abbotswood"	Abbotswood Potentilla	450mm height	Potted (OMIT 7)
RL	1	Rhododendron "Lemon Lights"	Lemon Lights Azalea	600mm height	Potted
RC	3	Rosa "Champlain"	Champlain Rose	450mm height	Potted
SbT	5	Spiraea betulifolia "Tor"	Tor Spirea	450mm height	Potted
SbG	25	Spiraea bumalda "Goldflame"	Goldflame Spirea	450mm height	Potted
SP	5	Sayringa pubescens subsp. "Miss Kim"	Miss Kim Lilac	450mm height	Potted
TO	7	Thuja occidentalis "Emerald"	Emerald Cedar	1500mm height	Potted (OMIT 14)
WF	19	Weigela florida "Minuet"	Minuet Weigela	450mm height	Potted
<b>PERENNIALS</b>					
EP	72	Echinacea purpurea "Pow Wow"	Pow Wow Coneflower	#1 container	(ADD 52)
GM	35	Geranium Macrorrhizum	Cranesbill Geranium	#1 container	
HA	15	Hemerocallis "Autumn Red"	Autumn Red Daylily	#1 container, heavy 2 fan division	(OMIT 10)
HM	22	Hemerocallis "Miniature King"	Miniature King Daylily	#1 container, heavy 2 fan division	
HW	50	Hemerocallis "Little Wine Cup"	Little Wine Cup Daylily	#1 container, heavy 2 fan division	
Hgm	110	Hosta "Ground Master"	Ground Master Hosta	#1 container	(OMIT 33)
Hkr	37	Hosta "Krossa Regal"	Krossa Regal Hosta	#1 container	(OMIT 8)
Hrs	94	Hosta "Royal Standard"	Royal Standard Hosta	#1 container	
Is	31	Iris sibirica	Siberian Iris	#1 container	
La	12	Lavandula angustifolia "Munstead"	Lavender	#1 container	
SsA	65	Sedum spectabile "Autumn Joy"	Autumn Joy Sedum	#1 container	(ADD 44)
SF	88	Sedum spurius "Fuldaglut"	Fulda Glow Sedum	#1 container	
VM	65	Vinca minor	Periwinkle	#1 container	
YF	6	Yucca filamentosa	Yucca	#2 container	(OMIT 6)
<b>GRASSES</b>					
Fs	40	Festuca "Skinner's Blue"	Skinner Blue Fescue	#1 container	
Ca	48	Calamagrostis acutiflora "Karl Foerster"	Forester's Reed Grass	#1 container	(ADD 23)

No.	Revision	Date
3	ISSUED FOR CCO 01	08/21/2019
2	ISSUED FOR TENDER	08/03/2019
1	ISSUED FOR REVIEW	17/12/2018

- EXISTING**
- Existing Conifer to be retained
  - Existing planting bed / shrubs to be retained (weed and improve soils as per specifications)
- PAVING**
- Proposed Unit Paving–Type 1
  - Proposed Unit Paving–Type 2 (Paving Bands)
  - Salvaged Unit Paving
  - Existing pea gravel area–clear debris, weed and top up pea gravel as required to provide 50mm depth
- PLANTING**
- Proposed Topsoil and Sod
  - Proposed Conifer
  - Proposed Perennial / Shrub Planting
  - Existing area drain to retain and protect
  - New area drain (existing area drain location)

CSW Landscape Architecture  
Urban Design  
Site Planning  
Recreation and Park Planning  
Project Management

319 McRae Avenue, Suite 502, Ottawa, Ontario, K1Z 0B9  
Tel: (613) 729-4536

- All measurements in millimeters unless specified otherwise. Do not scale drawing. All drawings to be read in conjunction with written specifications.
- Copyright reserved. This drawing is the exclusive property of CSW Landscape Architects Ltd. and shall not be used without the consent thereof.
- This Drawing may not be used for construction until signed by the landscape architect. It is the responsibility of the contractor to:
  - check and verify all dimensions on site;
  - report all errors and/or omissions to the landscape architect;
  - comply with all pertinent codes and by-laws;
  - check and verify locations of all underground services with all local utilities prior to any digging.

Project:  
**MERIDIAN AT CENTREPOINT**  
NEPEAN, OTTAWA, ONTARIO

Drawing:  
**LANDSCAPE PLAN OPTION 01 (as existing)**

Scale: 1:100	Date: JANUARY 2019
Design By: SE	Drawn By: SE
Project Number: 2005-01	Sheet Number: L 2.0



Label Save: 8/22/2019 11:46:51 AM  
 File Location: C:\Projects\2005-01 The Meridian\Drawings\TENDER\DOCS\2005-01 The Meridian\_Landscape Plan\_L2\_0\_Option 1\_CCO 01.dwg