

**AS-BUILT DRAWING**

BY: Isabelle

DATE: 2019-10-16

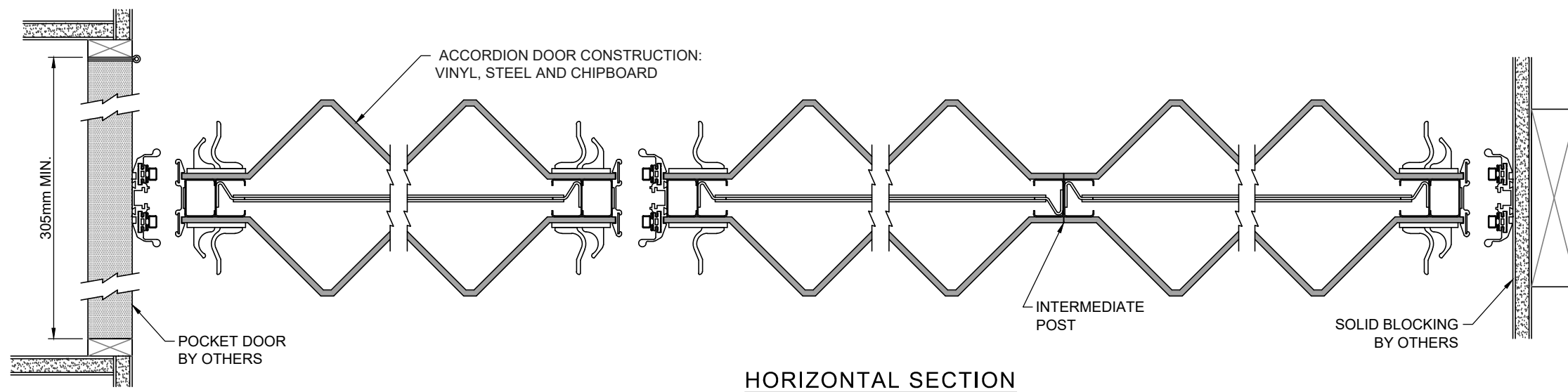
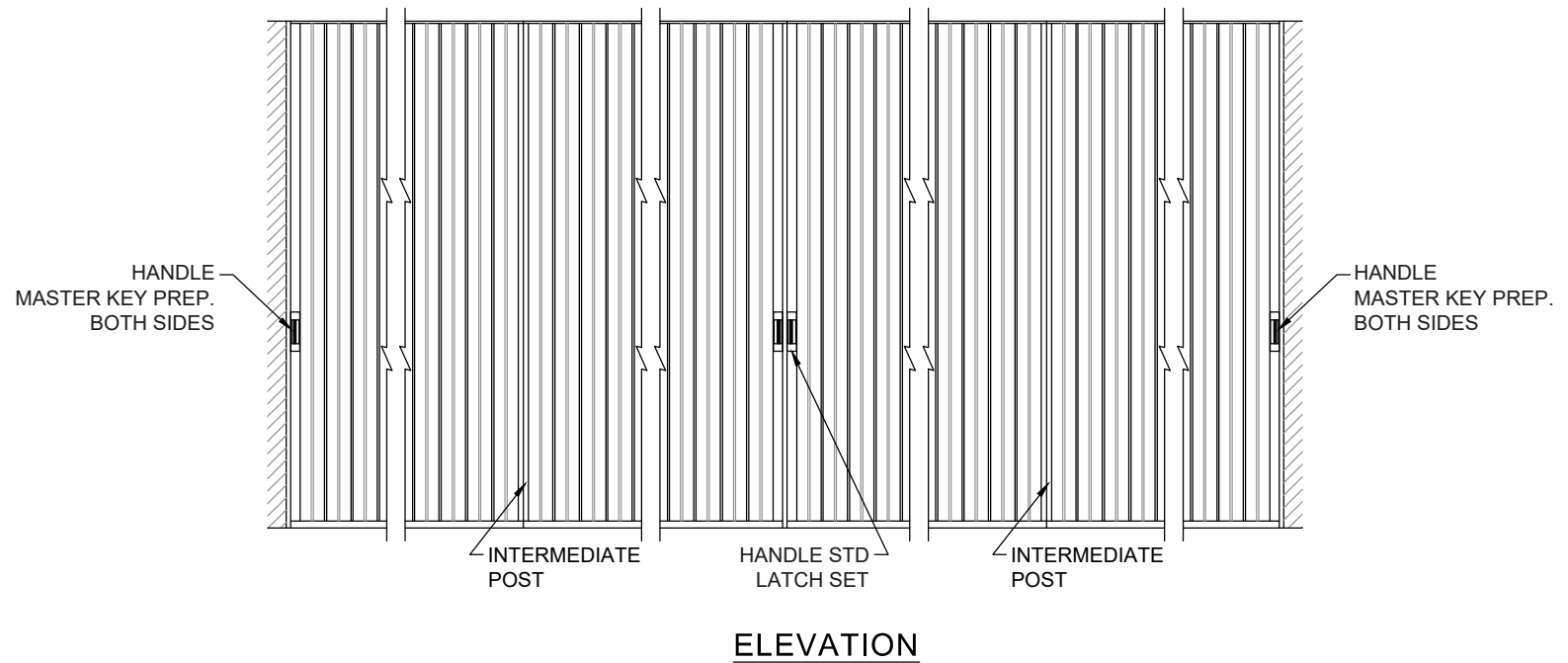
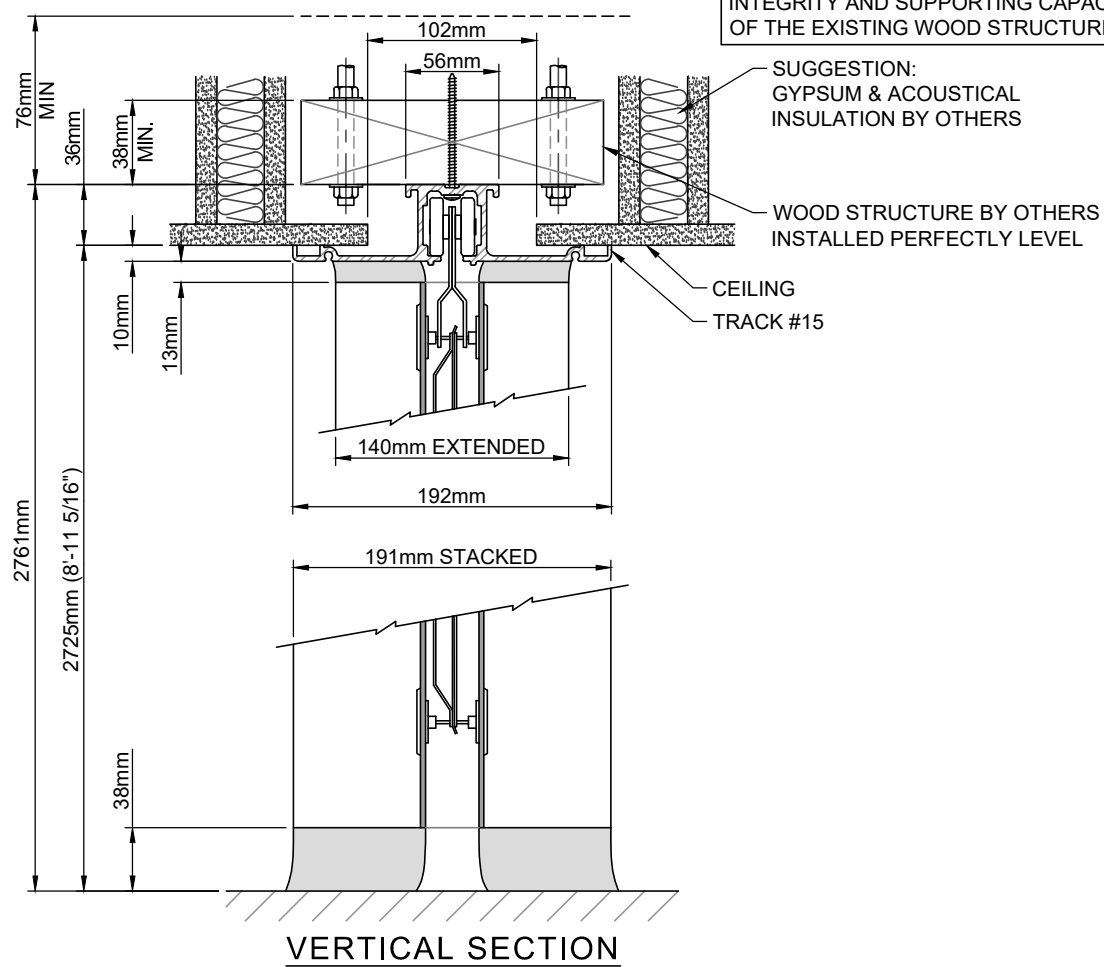
CORFLEX IS NOT RESPONSIBLE FOR THE INTEGRITY AND SUPPORTING CAPACITY OF THE EXISTING WOOD STRUCTURE.

**4100 SERIES**

STC 41

- ANODIZED ALUMINIUM TRACK
- FIXED SWEEPS AT TOP AND BOTTOM

ALL DIMENSIONS ARE BASED ON OPENING WIDTH. CORFLEX MUST BE NOTIFIED OF ANY VARIATION OF THE OPENING DIMENSIONS PRIOR TO INSTALLING THE STRUCTURAL SUPPORT SINCE THIS WILL LEAD TO A CHANGE IN STEEL LAYOUT. STRUCTURE MUST BE INSTALLED AS PER OUR APPROVED SHOP DRAWINGS.



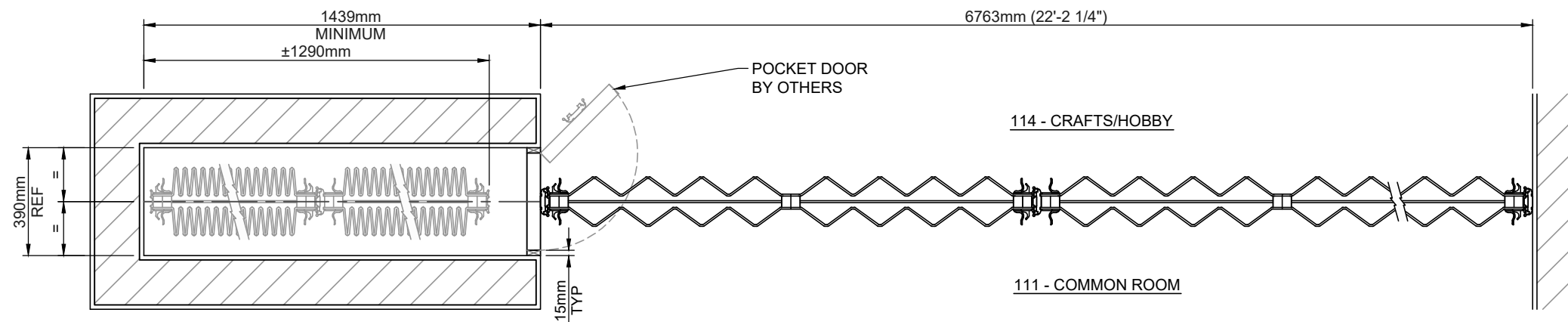
<b>LOCATION</b> 114 - CRAFTS/HOBBY 111 - COMMON ROOM	<b>WEIGHT</b> ± 400kg	<b>GENERAL NOTES:</b> 1- SOLID BLOCKING IS REQUIRED AT JAMBS BY OTHERS. 2- ANY STRUCTURAL DEFLECTION AND VARIATION OF THE FLOOR LEVELNESS SHOULD NOT EXCEED A COMBINED TOTAL OF 10mm. 3- THERE MUST BE A CLEARANCE OF AT LEAST 350mm ON EACH SIDE OF CENTER LINE AT CEILING, WALLS AND FLOOR. 4- CORFLEX IS NOT RESPONSIBLE FOR SOUND BARRIERS ABOVE THE CEILING. 5- UNLESS OTHERWISE NOTED, OVERHEAD STRUCTURAL SUPPORTS TO BE SUPPLIED BY OTHERS. 6- CORFLEX RECOMMENDS THAT ALL SUSPENSION ELEMENTS BE ACCESSIBLE FOR FUTURE ADJUSTMENTS. 7- ALL DIMENSIONS ARE TO BE FIELD VERIFIED. 8- WALLS AT EXTREMITY OF PARTITION MUST BE PLUMB, BY OTHERS.	<b>PROJECT:</b> THE MERIDIAN COMMUNITY BLDG <b>ARCH./DESIGNER:</b> BARRY J HOBIN ASSOCIATES <b>CONTRACTOR:</b> TALCO BUILDING INNOVATIONS LTD <b>DIST./AGENT:</b> STÉPHANE SOUCY <b>LOCATION:</b> OTTAWA, ON	<b>CORFLEX</b> 10 rue Poissant Delson QC, J5B 2J1 Tel. : (450) 444-2422 Fax : (450) 444-2441 www.corflex.ca Licensee of <b>HUPCOR</b> International	<b>DRAW BY:</b> G.L. <b>DATE:</b> 2019-07-08 <b>REV. NO.:</b> - <b>DRAWING NO.:</b> A19-12303-1	1/2
<b>COLOUR :</b> REVELATIONS DELIGHT ECRU #48-04						
<b>DOOR FINISH :</b> STANDARD FABRIC						

ALL DIMENSIONS ARE BASED ON OPENING WIDTH. CORFLEX MUST BE NOTIFIED OF ANY VARIATION OF THE OPENING DIMENSIONS PRIOR TO INSTALLING THE STRUCTURAL SUPPORT SINCE THIS WILL LEAD TO A CHANGE IN STEEL LAYOUT. STRUCTURE MUST BE INSTALLED AS PER OUR APPROVED SHOP DRAWINGS.

**AS-BUILT DRAWING**

BY: Isabelle

DATE: 2019-10-16



PLAN VIEW

<p><b>LOCATION</b></p> <p>114 - CRAFTS/HOBBY 111 - COMMON ROOM</p>	<p><b>WEIGHT</b></p> <p>± 400 kg</p>	<p><b>GENERAL NOTES:</b></p> <ol style="list-style-type: none"> <li>1- SOLID BLOCKING IS REQUIRED AT JAMBS BY OTHERS.</li> <li>2- ANY STRUCTURAL DEFLECTION AND VARIATION OF THE FLOOR LEVELNESS SHOULD NOT EXCEED A COMBINED TOTAL OF 10mm.</li> <li>3- THERE MUST BE A CLEARANCE OF AT LEAST 350mm ON EACH SIDE OF CENTER LINE AT CEILING, WALLS AND FLOOR.</li> <li>4- CORFLEX IS NOT RESPONSIBLE FOR SOUND BARRIERS ABOVE THE CEILING.</li> <li>5- UNLESS OTHERWISE NOTED, OVERHEAD STRUCTURAL SUPPORTS TO BE SUPPLIED BY OTHERS.</li> <li>6- CORFLEX RECOMMENDS THAT ALL SUSPENSION ELEMENTS BE ACCESSIBLE FOR FUTURE ADJUSTEMENTS.</li> <li>7- ALL DIMENSIONS ARE TO BE FIELD VERIFIED.</li> <li>8- WALLS AT EXTREMITY OF PARTITION MUST BE PLUMB, BY OTHERS.</li> </ol>	<p><b>PROJECT:</b> THE MERIDIAN COMMUNITY BLDG</p> <p><b>ARCH./DESIGNER:</b> BARRY J HOBIN ASSOCIATES</p> <p><b>CONTRACTOR:</b> TALCO BUILDING INNOVATIONS LTD</p> <p><b>DIST./AGENT:</b> STÉPHANE SOUCY</p> <p><b>LOCATION:</b> OTTAWA, ON</p>	<p><b>CORFLEX</b></p> <p>10 rue Poissant Delson QC, J5B 2J1 Tel. : (450) 444-2422 Fax : (450) 444-2441 www.corflex.ca</p> <p>Licensee of <b>HUPCOR</b> International</p>	<p><b>DRAW BY:</b> G.L.</p> <p><b>DATE:</b> 2019-07-08</p> <p><b>REV. NO.:</b> -</p> <p><b>DRAWING NO.:</b> A19-12303-1</p> <p>2 / 2</p>
<p><b>COLOUR :</b> REVELATIONS DELIGHT ECRU #48-04</p>					
<p><b>DOOR FINISH :</b> STANDARD FABRIC</p>					

CORFLEX IS NOT RESPONSIBLE FOR THE INTEGRITY AND SUPPORTING CAPACITY OF THE EXISTING WOOD STRUCTURE.

**4100 SERIES**  
STC 41

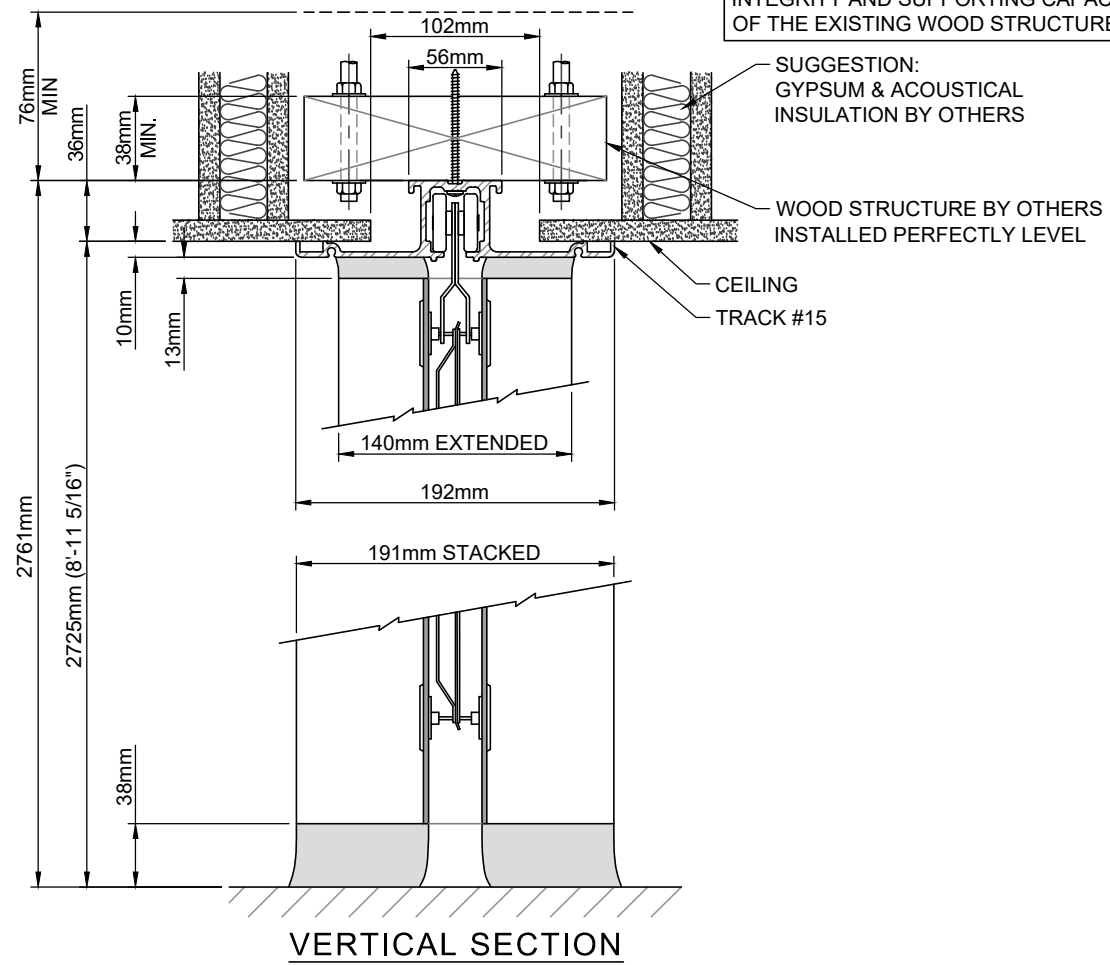
- ANODIZED ALUMINIUM TRACK
- FIXED SWEEPS AT TOP AND BOTTOM

ALL DIMENSIONS ARE BASED ON OPENING WIDTH. CORFLEX MUST BE NOTIFIED OF ANY VARIATION OF THE OPENING DIMENSIONS PRIOR TO INSTALLING THE STRUCTURAL SUPPORT SINCE THIS WILL LEAD TO A CHANGE IN STEEL LAYOUT. STRUCTURE MUST BE INSTALLED AS PER OUR APPROVED SHOP DRAWINGS.

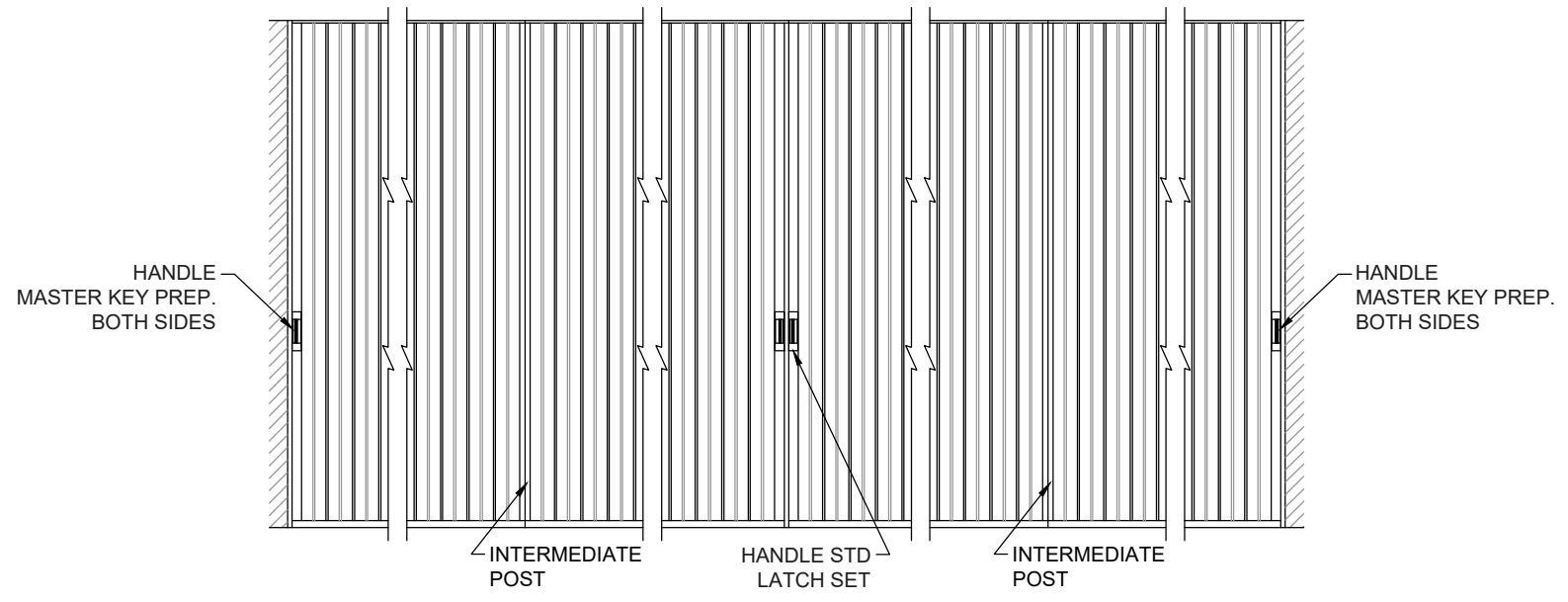
**AS-BUILT DRAWING**

BY: Isabelle

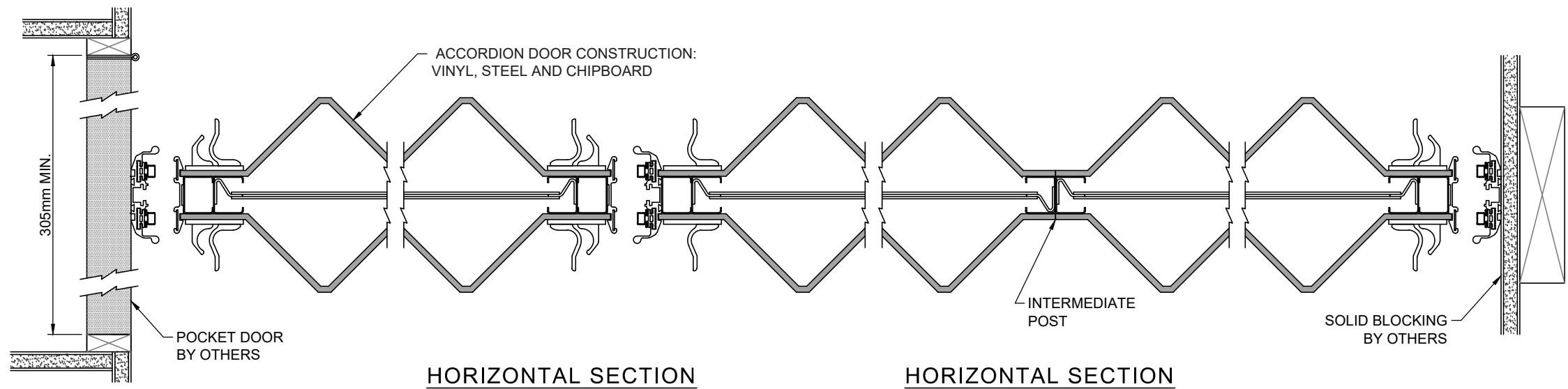
DATE: 2019-10-16



**VERTICAL SECTION**



**ELEVATION**



**HORIZONTAL SECTION**

**HORIZONTAL SECTION**

<b>LOCATION</b>	<b>WEIGHT</b>
111 - COMMON ROOM 109 - FITNESS	± 440kg
<b>COLOUR :</b> REVELATIONS DELIGHT ECRU #48-04	
<b>DOOR FINISH :</b> STANDARD FABRIC	

- GENERAL NOTES:**
- 1- SOLID BLOCKING IS REQUIRED AT JAMBS BY OTHERS.
  - 2- ANY STRUCTURAL DEFLECTION AND VARIATION OF THE FLOOR LEVELNESS SHOULD NOT EXCEED A COMBINED TOTAL OF 10mm.
  - 3- THERE MUST BE A CLEARANCE OF AT LEAST 350mm ON EACH SIDE OF CENTER LINE AT CEILING, WALLS AND FLOOR.
  - 4- CORFLEX IS NOT RESPONSIBLE FOR SOUND BARRIERS ABOVE THE CEILING.
  - 5- UNLESS OTHERWISE NOTED, OVERHEAD STRUCTURAL SUPPORTS TO BE SUPPLIED BY OTHERS.
  - 6- CORFLEX RECOMMENDS THAT ALL SUSPENSION ELEMENTS BE ACCESSIBLE FOR FUTURE ADJUSTMENTS.
  - 7- ALL DIMENSIONS ARE TO BE FIELD VERIFIED.
  - 8- WALLS AT EXTREMITY OF PARTITION MUST BE PLUMB, BY OTHERS.

<b>PROJECT:</b> THE MERIDIAN COMMUNITY BLDG
<b>ARCH./DESIGNER:</b> BARRY J HOBIN ASSOCIATES
<b>CONTRACTOR:</b> TALCO BUILDING INNOVATIONS LTD
<b>DIST./AGENT:</b> STÉPHANE SOUCY
<b>LOCATION:</b> OTTAWA, ON

**CORFLEX**

10 rue Poissant  
Delson QC, J5B 2J1  
Tel. : (450) 444-2422 Fax : (450) 444-2441  
www.corflex.ca

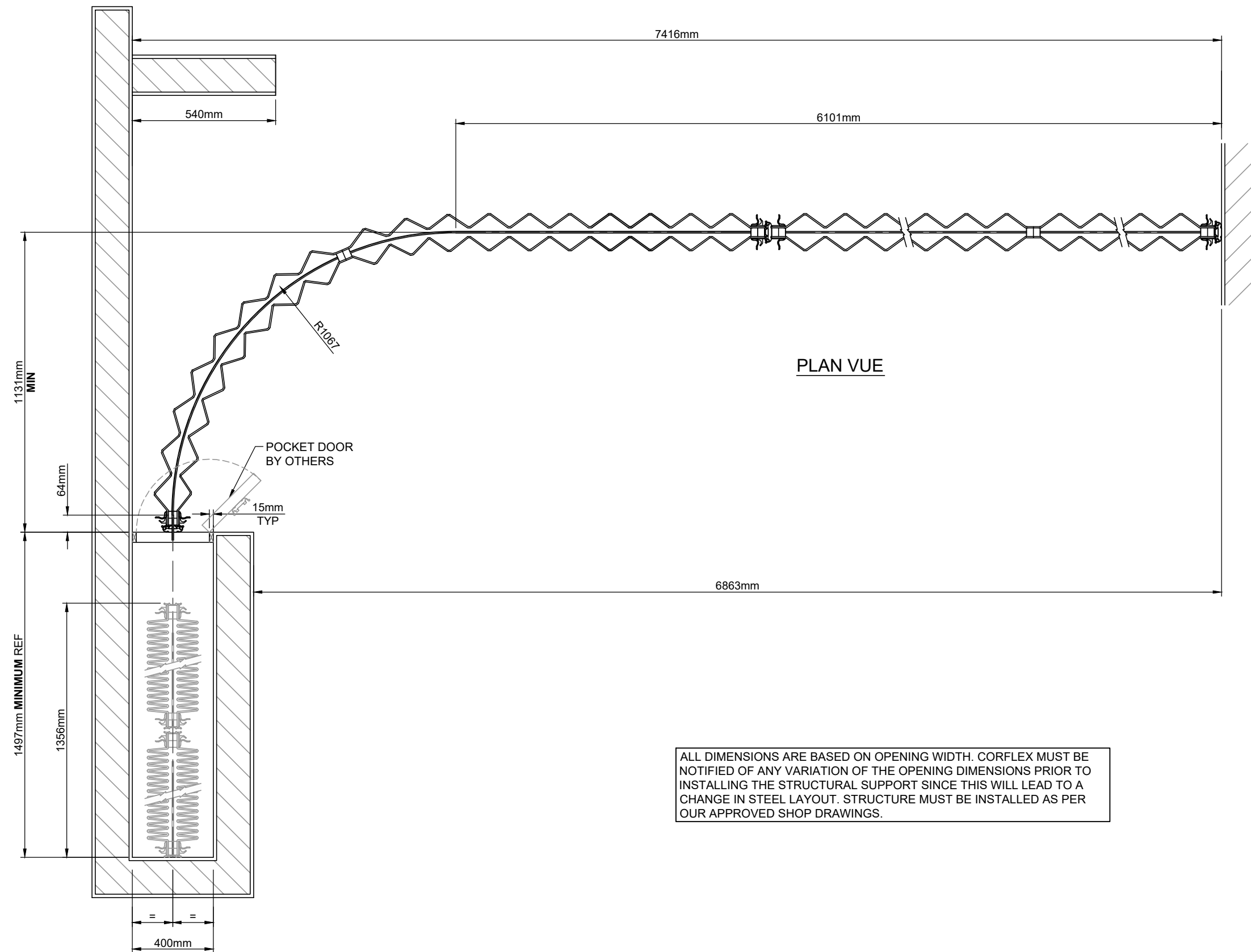
Licensee of **HUPCOR** International

<b>DRAW BY:</b> G.L.
<b>DATE:</b> 2019-07-08
<b>REV. NO.:</b> -
<b>DRAWING NO.:</b> A19-12303-2
1 / 2

**AS-BUILT DRAWING**

BY: Isabelle

DATE: 2019-10-16



ALL DIMENSIONS ARE BASED ON OPENING WIDTH. CORFLEX MUST BE NOTIFIED OF ANY VARIATION OF THE OPENING DIMENSIONS PRIOR TO INSTALLING THE STRUCTURAL SUPPORT SINCE THIS WILL LEAD TO A CHANGE IN STEEL LAYOUT. STRUCTURE MUST BE INSTALLED AS PER OUR APPROVED SHOP DRAWINGS.

<b>LOCATION</b> 111 - COMMON ROOM 109 - FITNESS	<b>WEIGHT</b> ± 440kg	<b>GENERAL NOTES:</b> 1- SOLID BLOCKING IS REQUIRED AT JAMBS BY OTHERS. 2- ANY STRUCTURAL DEFLECTION AND VARIATION OF THE FLOOR LEVELNESS SHOULD NOT EXCEED A COMBINED TOTAL OF 10mm. 3- THERE MUST BE A CLEARANCE OF AT LEAST 350mm ON EACH SIDE OF CENTER LINE AT CEILING, WALLS AND FLOOR. 4- CORFLEX IS NOT RESPONSIBLE FOR SOUND BARRIERS ABOVE THE CEILING. 5- UNLESS OTHERWISE NOTED, OVERHEAD STRUCTURAL SUPPORTS TO BE SUPPLIED BY OTHERS. 6- CORFLEX RECOMMENDS THAT ALL SUSPENSION ELEMENTS BE ACCESSIBLE FOR FUTURE ADJUSTMENTS. 7- ALL DIMENSIONS ARE TO BE FIELD VERIFIED. 8- WALLS AT EXTREMITY OF PARTITION MUST BE PLUMB, BY OTHERS.	<b>PROJECT:</b> THE MERIDIAN COMMUNITY BLDG <b>ARCH./DESIGNER:</b> BARRY J HOBIN ASSOCIATES <b>CONTRACTOR:</b> TALCO BUILDING INNOVATIONS LTD <b>DIST./AGENT:</b> STÉPHANE SOUCY <b>LOCATION:</b> OTTAWA, ON	<b>CORFLEX</b> 10 rue Poissant Delson QC, J5B 2J1 Tel. : (450) 444-2422 Fax : (450) 444-2441 www.corflex.ca Licensee of <b>HUPCOR</b> International	<b>DRAW BY:</b> G.L. <b>DATE:</b> 2019-07-08 <b>REV. NO.:</b> - <b>DRAWING NO.:</b> A19-12303-2
<b>COLOUR:</b> REVELATIONS DELIGHT ECRU #48-04					2 / 2
<b>DOOR FINISH:</b> STANDARD FABRIC					