

# CONTEMPLATED CHANGE ORDER



CONTRACTOR:  
Tal-co Building Innovations Ltd.  
Suite A, 4728 Bank Street  
Ottawa, ON K1T 3W7

PROJ.: Meridian Community  
Building Rebuild  
PROJ. No.: 1841  
DATE: Nov. 12, 2019  
C.C.O. No. 035

Pursuant to GC 6.2 – Change Orders in CCDC 2 – 2008, the following items are proposed changes to the contract for this project. Unless noted below, work is not to proceed until authorized by a Change Order. All material and workmanship are to be as described in the contract documents unless otherwise stated. Please submit an itemized quotation for changes to the contract value and/or to the project schedule, within 10 calendar days of the date hereon.

## Partners

Barry J. Hobin  
OAA, FRAIC, Hon. Fellow AIA

William A. Davis  
OAA, MRAIC, Associate AIA

Gordon Lorimer  
OAA, FRAIC, Associate AIA

Wendy Brawley  
OAA, MRAIC, Associate AIA

Douglas Brooks  
Senior Arch. Tech.

## Directors

Marc Thivierge  
OAA, MRAIC

Reinhard Vogel  
Senior Arch. Tech.

## Associates

Bryan Bonell  
OAA, MRAIC, Associate AIA

William Ritcey  
MRAIC

Dan Henhoeffler  
Senior Arch. Tech.

## 35.1 TITLE

Coating for Exposed Concrete at Links

## 35.2 REFERENCE

Site Visit Reports No. 6 & 7

## 35.3 DESCRIPTION OF WORK

- .1 Extend metal flashing over exposed insulation where the south Link connects with the south residential block – refer to Photo 03 in Site Visit Report No. 06.
- .2 Coat exposed concrete in these locations at both links with Tremco Vulkem 350/351 Waterproofing System, or approved equivalent. See attached data sheet. Provide printed colour chart or samples for colour selection from standard colour range.

## 35.4 ATTACHMENTS

Tremco Vulkem 350/351 Waterproofing System Data Sheet

## 35.5 REASON

Site condition.

A handwritten signature in black ink that reads "Bryan Bonell".

Bryan Bonell

## Hobin Architecture Incorporated

63 Pamilla Street  
Ottawa, Ontario  
Canada K1S 3K7

t 613-238-7200

f 613-235-2005

[hobinarc.com](http://hobinarc.com)

MERIDIAN COMMUNITY BUILDING REBUILD  
SITE VISIT Oct. 28, 2019

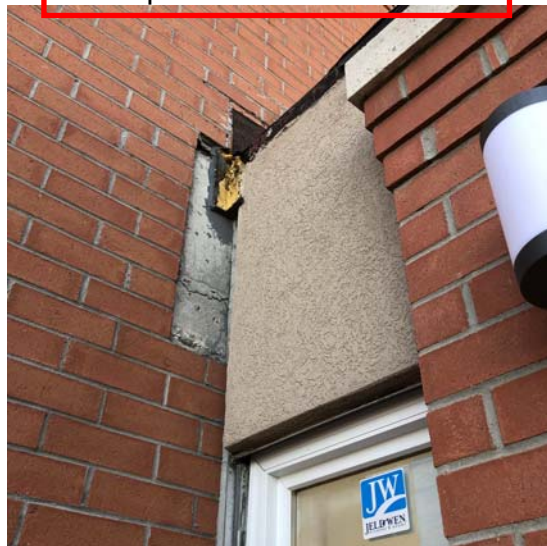
01 Duct in Stor-3



02 Irrigation Controls



03 Exposed Concrete at Links



04 Planting on Podium



05 Exit Door at Link



06 Base of North Wall



### Product Description

Vulkem® 350/351 is a composite waterproofing system comprised of tough-curing liquid polyurethane. It cures to form a rubber membrane surface that provides a lasting and easy-to-clean coating. Textured surfaces for pedestrian traffic will use an aggregate-laden top membrane to aid in wear and slip resistance. Vulkem 350/351 may be used to apply a seamless, monolithic waterproof membrane to concrete and primed metal surfaces.

Vulkem 350 Base Coat is a single-component urethane membrane that bonds firmly to clean, dry concrete and metal. It retains its integrity even if substrate movement causes hair-line cracks of up to 1/16" (1.5 mm). If cut or damaged, Vulkem 350 will prevent water migration between itself and the substrate. Vulkem 350 is available in roller (R) and in self-leveling (SL) grade for vertical and horizontal application.

Vulkem 351 Top Coat is an aliphatic, single-component polyurethane, which when used in conjunction with the recommended aggregate, creates a tough, aesthetically appealing, skid resistant, wearing surface that forms a strong interlaminar bond to the Vulkem 350 basecoat.

### Basic Uses

Vulkem 350/351 is ideal for plazas, recreation decks, balconies, mechanical rooms, stadiums, athletic surfaces and similar applications requiring an elastomeric waterproofing system.

### Features and Benefits

- Fast cure through time allows for use 24 hr after installation.
- Mildew- and fungus- resistance safeguards concrete surfaces against environmental contaminants.
- Excellent durability and UV resistance extend the useful life of pedestrian systems.
- Recoatable and compatible with other Tremco sealants, which enhances waterproofing protection with full system compatibility.

### Availability

Immediately available from your local Tremco Sales Representative, Tremco distributor, or warehouse.

### Packaging

Vulkem 350: 5-gal (18.9-L) pails, 55-gal (208.2-L) drums

Vulkem 351: 5-gal (18.9-L) pails, 55-gal (208.2-L) drums

### Colors

Vulkem 351 is available in Beige, Gray, Limestone, Maple, Slate Gray, Black, and White. Special colors are available upon request.

### Installation

Concrete shall be water-cured and attain a 3000 psi minimum compressive strength. Concrete finish shall be a light steel trowel followed by a fine-hair broom, or equivalent ICRI #2-#4 finish. Moisture content in the concrete must be lower than 4.5% as measured using a Tramex CME 4 Moisture Meter. Depending on concrete construction and job site location, additional concrete testing may be required. Please contact your local Tremco Sales or Technical Representative.

Please refer to the Vulkem 350/351 Application Instructions for complete application details. The techniques involved may require modification to adjust to the jobsite conditions. Consult your Tremco Sales Representative or Tremco Technical Services for site conditions and requirements.

### Limitations

- Do not apply to damp or contaminated surfaces.
- Use with adequate ventilation.

### Warranty

Tremco warrants its Products to be free of defects in materials but makes no warranty as to appearance or color. Since methods of application and on-site conditions are beyond our control and can affect performance, Tremco makes no other warranty, expressed or implied, including warranties of MERCHANTABILITY and FITNESS FOR A PARTICULAR PURPOSE with respect to Tremco Products. Tremco's sole obligation shall be, at its option, to replace or to refund the purchase price of the quantity of Tremco Products proven to be defective, and Tremco shall not be liable for any loss or damage.

Please refer to our website at [www.tremcosealants.com](http://www.tremcosealants.com) for the most up-to-date Product Data Sheets.

NOTE: All Tremco Safety Data Sheets (SDS) are in alignment with the Globally Harmonized System of Classification and Labelling of Chemicals (GHS) requirements.

