

**GENERAL NOTES**

1. DO NOT SCALE DRAWINGS. FIGURED DIMENSIONS ONLY TO BE USED.
2. IT IS THE RESPONSIBILITY OF THE ARCHITECT TO VERIFY THE LOCATION AND DEPTH OF ALL DIMENSIONS ON SITE AND REPORT ANY DISCREPANCIES TO THE ARCHITECT.
3. ALL WORK DESCRIBED UNDER THIS CONTRACT TO COMPLY WITH THE MOST CURRENT EDITION OF THE ONTARIO BUILDING CODE, AND/OR NATIONAL BUILDING CODE, AND OTHER CODES AND BY-LAWS IN EFFECT.



**Atyrea Engineering Group Inc.**  
Registered Professional Engineer, Ontario  
159 Columbia Road, Unit 1, Ottawa, Ontario, K2J 7J4  
Phone: (613) 232-0093 Fax: (613) 232-5759

**ISSR RECORD**

No	DATE	REVISION
1	13-05-2016	ISSUED FOR CLIENT REVIEW
2	28-09-2018	ISSUED FOR BUILDING PERMIT
3	27-06-2019	ISSUED FOR BUILDING PERMIT
4	8-11-2019	ISSUED FOR TENDER

**CLIENT:**  
ENTERPRISE RENT-A-CAR  
RYAN FIRLOTTE  
T: 613-274-6934  
F: 1-800-495-2412

**CONSULTANTS:**  
HOLZMAN CONSULTANTS INC.  
(LAND DEVELOPMENT CONSULTANTS)  
1076 CASTLE HILL CRES  
OTTAWA, ONTARIO  
K2C 2A8  
T: 613-226-1386

**MMI GROUP LTD**  
(CIVIL ENGINEERING)  
1145 HUNT CLUB ROAD, SUITE 300  
OTTAWA, ONTARIO  
K1V 0Y3  
T: 613-738-7200  
F: 613-736-8710

**VALLEY ENGINEERING**  
(STRUCTURAL ENGINEERING)  
521 DICKINSON AVENUE  
OTTAWA, ONTARIO  
K1V 7J4  
T: 613-521-9002

**ANTARES ENGINEERING**  
(M&E ENGINEERING)  
1-159 COLONNADE ROAD  
NEPEAN, ONTARIO  
K2E 7L4  
T: 613-723-6034

**PROJECT TITLE:**  
225 HUNTING DRIVE  
HUNTING/PALLADIUM DR. ENTERPRISE

**DRAWING TITLE:**  
ELECTRICAL  
POWER DISTRIBUTION

**DRAWN BY:** S.J.S.  
**CHECKED BY:** J.C.L.  
**SCALE:** AS SHOWN  
**JOB NO.:** 15-610  
**DRAWING NO.:** E-2

**ELECTRICAL**

**ELECTRICAL DRAWING NOTES:**

1. PROVIDE NEW POWER DISTRIBUTION SYSTEM C/W TRANSFORMER AND DISTRIBUTION PANELS. FOR DETAIL REFER TO SPECIFICATIONS AND DRAWINGS E-1 TO E-4.
2. PROVIDE WALL MOUNTED POWER RECEPTACLE AND DATA/TEL OUTLETS TYPICAL AS SHOWN. EXACT LOCATIONS TO BE COORDINATED WITH FINISHING INSTALLER PRIOR TO FINAL OUTLETS
3. PROVIDE FLUSH WALL MOUNTED ELECTRICAL FORCE FEED HEATER "FH-1" 4KW HEATING CAPACITY. 208V, 1Ø C/W BUILT IN THERMOSTAT.
4. PROVIDE POWER FOR NEW ROOF TOP UNIT.
5. PROVIDE POWER FOR NEW SERVICE HOT WATER TANK "HWT-1" 120V, 1Ø, 60HZ, 15A SERVICE.
6. PROVIDE EXTERIOR WEATHER PROOF RECEPTACLE DEDICATED CIRCUIT 120V, 1Ø, 15A MOUNTED ON SIDE OF ROOF TOP UNIT.
7. TYPICAL OFFICE POWER AND DATA LAYOUT. COORDINATE FINAL OUTLET LAYOUT WITH FINISHING TRADES PRIOR TO FINAL LOCATIONS (TYPICAL).
8. PROVIDE POWER FOR CEILING MOUNTED WASHROOM EXHAUST FAN, DEDICATED CIRCUIT 120V, 1Ø, 15A CONTROLLED BY LIGHT SWITCH.
9. PROVIDE POWER FOR HIGH BAY MOUNTED WASH BAY EXHAUST FANS "EF-2" AND "EF-3".
10. PROVIDE POWER FOR WASH BAY MOUNTED WALL LIGHT SWITCH. ALL ELECTRICAL WORK IN THE BOTH WASH BAYS SHALL BE PROVIDED WITH WEATHER TIGHT "EMT" CONDUITS C/W WEATHER TIGHT CONNECTIONS AND FITTINGS
11. PROVIDE POWER FOR HIGH BAY MOUNTED WASH BAY INFRARED GAS HEATERS "IR-1" AND "IR-2". DEDICATED CIRCUIT 120V, 1Ø, 15A CONTROLLED BY WALL MOUNTED THERMOSTAT. ALL ELECTRICAL WORK IN THE BOTH WASH BAYS SHALL BE PROVIDED WITH WEATHER TIGHT "EMT" CONDUITS C/W WEATHER TIGHT CONNECTIONS AND FITTINGS (TYPICAL).
12. PROVIDE POWER FOR WASHROOM WASHROOM EXHAUST FAN, DEDICATED CIRCUIT 120V, 1Ø, 15A FOR EMERGENCY ASSISTANCE KIT EQUAL TO "EDWARDS" 6538-50-24 C/W 6536-5G HORN/STROBE, 592 TRANSFORMER, 6537 PULL COORD SWITCH. ALL WORK SHALL BE IN THE COMPLIANCE WITH O.B.C. 3.8.3.1 ACCESSIBILITY SIGNS.
13. PROVIDE POWER FOR BARRIER-FREE UNIVERSAL WASHROOM AUTOMATIC DOOR OPERATOR REFER TO ARCHITECTURAL SPECIFICATIONS. FOR EXACT LOCATION OF POWER CIRCUIT TERMINATION AND RELATED CONTROLS TO BE COORDINATED WITH FINISHING TRADES PRIOR TO INSTALLATION.
14. PROVIDE POWER FOR GARAGE OVERHEAD AUTOMATIC DOOR OPERATOR REFER TO ARCHITECTURAL SPECIFICATIONS. FOR EXACT LOCATION OF POWER CIRCUIT TERMINATION AND RELATED CONTROLS TO BE COORDINATED WITH FINISHING TRADES PRIOR TO INSTALLATION.
15. VERIFY SENSOR LOCATION WITH OWNER PRIOR TO INSTALLATION.

**PANEL BOARD SCHEDULE # DP1**

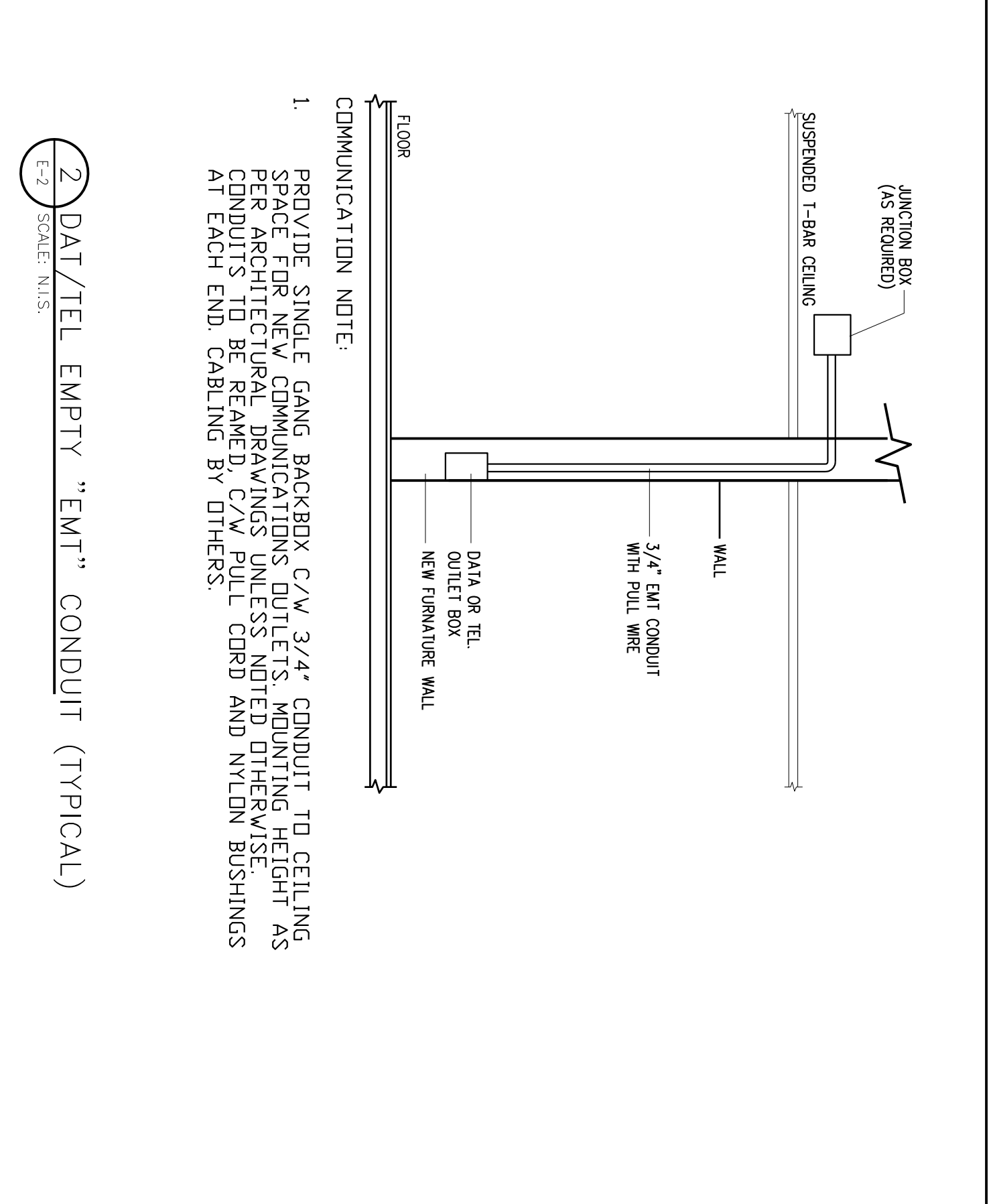
WLS 347/600V/4K/4MWS:225  
No. of CIRCUITS: 24  
TYPE: BREAKER FUSED  
SERIAL: EN 103910

NO.	DESCRIPTION	AMPS	VOLTS
1	RECEPTACLE	15	120
2	RECEPTACLE	15	120
3	RECEPTACLE	15	120
4	RECEPTACLE	15	120
5	RECEPTACLE	15	120
6	RECEPTACLE	15	120
7	RECEPTACLE	15	120
8	RECEPTACLE	15	120
9	RECEPTACLE	15	120
10	RECEPTACLE	15	120
11	RECEPTACLE	15	120
12	RECEPTACLE	15	120
13	RECEPTACLE	15	120
14	RECEPTACLE	15	120
15	RECEPTACLE	15	120
16	RECEPTACLE	15	120
17	RECEPTACLE	15	120
18	RECEPTACLE	15	120
19	RECEPTACLE	15	120
20	RECEPTACLE	15	120
21	RECEPTACLE	15	120
22	RECEPTACLE	15	120
23	RECEPTACLE	15	120
24	RECEPTACLE	15	120

**PANEL BOARD SCHEDULE # DP2**

WLS 347/600V/4K/4MWS:225  
No. of CIRCUITS: 42  
TYPE: BREAKER FUSED  
SERIAL: EN 103910

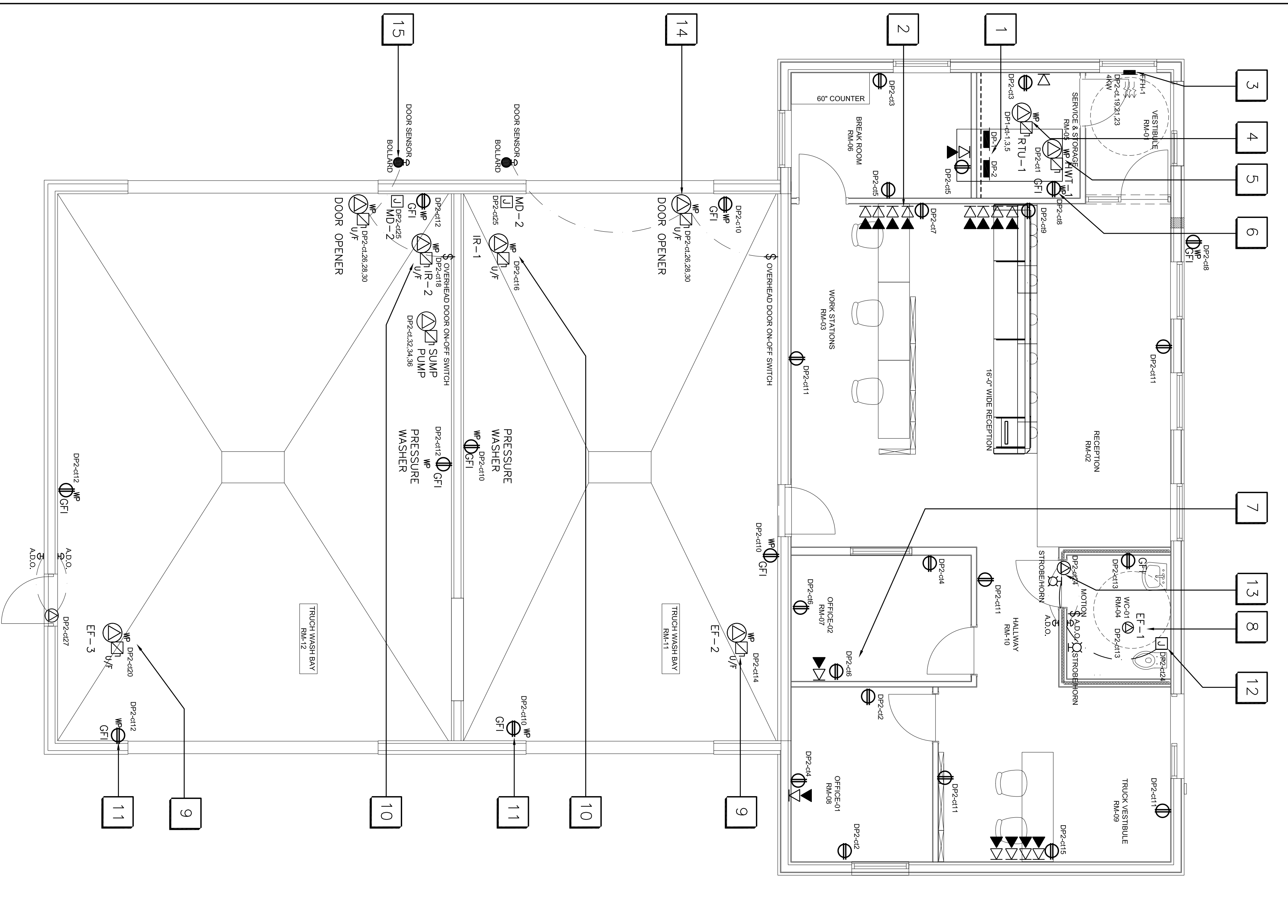
NO.	DESCRIPTION	AMPS	VOLTS
1	RECEPTACLE	15	120
2	RECEPTACLE	15	120
3	RECEPTACLE	15	120
4	RECEPTACLE	15	120
5	RECEPTACLE	15	120
6	RECEPTACLE	15	120
7	RECEPTACLE	15	120
8	RECEPTACLE	15	120
9	RECEPTACLE	15	120
10	RECEPTACLE	15	120
11	RECEPTACLE	15	120
12	RECEPTACLE	15	120
13	RECEPTACLE	15	120
14	RECEPTACLE	15	120
15	RECEPTACLE	15	120
16	RECEPTACLE	15	120
17	RECEPTACLE	15	120
18	RECEPTACLE	15	120
19	RECEPTACLE	15	120
20	RECEPTACLE	15	120
21	RECEPTACLE	15	120
22	RECEPTACLE	15	120
23	RECEPTACLE	15	120
24	RECEPTACLE	15	120
25	RECEPTACLE	15	120
26	RECEPTACLE	15	120
27	RECEPTACLE	15	120
28	RECEPTACLE	15	120
29	RECEPTACLE	15	120
30	RECEPTACLE	15	120
31	RECEPTACLE	15	120
32	RECEPTACLE	15	120
33	RECEPTACLE	15	120
34	RECEPTACLE	15	120
35	RECEPTACLE	15	120
36	RECEPTACLE	15	120
37	RECEPTACLE	15	120
38	RECEPTACLE	15	120
39	RECEPTACLE	15	120
40	RECEPTACLE	15	120
41	RECEPTACLE	15	120
42	RECEPTACLE	15	120



**EXTERIOR LIGHTING SCHEDULE**

SYMBOL	LABEL	QUANTITY	MANUFACTURER	CATALOGUE NUMBER	DESCRIPTION	LAMP	NO. OF LAMPS	LUMENS PER LAMP	LIGHT LOSS FACTOR	WATTAGE
A	1	1	PHILIPS GARDCO	ASA-128G1-700-2L-HSS	PHILIPS LARGE AEROSCAPE AREA WITH TYPE 2L OPTICS WITH HOUSE SIDE SHIELD	LEDNOME 2.2 LIGHT ARRAY OF 128 LEDS (LUKEON R) EACH DRIVEN AT 700ma	1	17506	0.85	277.6
B	2	1	PHILIPS GARDCO	ASA-128G1-700-4L-HSS	PHILIPS LARGE AEROSCAPE AREA WITH TYPE 4L OPTICS WITH HOUSE SIDE SHIELD	LEDNOME 2.2 LIGHT ARRAY OF 128 LEDS (LUKEON R) EACH DRIVEN AT 700ma	1	17979	0.85	278
C	5	5	PHILIPS STONOCO/KEENE	LPW32-7	LYTERPO 32 LED MEDIUM WALL SOURCE CAST GRAY ENAMEL ALUMINUM AND PLASTIC HOUSING. CLEAR GLASS	32 WHITE LEDS WITH CLEAR BELL GLASS	1	6911	0.85	70.5

**2 DAT/TEL EMPTY "EMT" CONDUIT (TYPICAL)**



**1 ELECTRICAL FLOOR PLAN**  
SCALE: 1 : 50  
E-2