

GENERAL NOTES

1. DO NOT SCALE DRAWINGS. FIGURED DIMENSIONS ONLY TO BE USED.
2. IT IS THE RESPONSIBILITY OF THE CONTRACTOR TO CHECK AND VERIFY ALL DIMENSIONS ON SITE AND REPORT ANY DISCREPANCIES TO THE ARCHITECT DESCRIBED UNDER THIS CONTRACT TO COMPLY WITH THE MOST CURRENT EDITION OF THE ONTARIO BUILDING CODE AND/OR NATIONAL BUILDING CODE AND OTHER CODES AND BY-LAW REQUIREMENTS.



Atyres Engineering Group Inc.
Mechanical Engineering, Electrical, Testing and
Insulation Services
159 Cambridge Road, Unit 1, Ottawa, Ontario, K2J 7J4
Phone: (613) 232-0093 Fax: (613) 232-5799

ISSUE RECORD

No	DATE	REVISION
1	13-05-2016	ISSUED FOR CLIENT REVIEW
2	28-09-2018	ISSUED FOR REVIEW
3	27-06-2019	ISSUED FOR BUILDING PERMIT
4	8-11-2019	ISSUED FOR TENDER

ACTUAL PROJECT MONTH	MONTH
1	13-05-2016
2	28-09-2018
3	27-06-2019
4	8-11-2019

CLIENT:
ENTERPRISE RENT-A-CAR
RYAN FIRLOTTE
T: 613-274-6934
F: 1-800-495-2412

CONSULTANTS:
HOLZMAN CONSULTANTS INC.
(LAND DEVELOPMENT CONSULTANTS)
1076 CASTEL HILL CRES
OTTAWA, ONTARIO
K2C 2A8
T: 613-226-1386

MMI GROUP LTD
(CIVIL ENGINEERING)
1145 HUNT CLUB ROAD, SUITE 300
OTTAWA, ONTARIO
K1V 0Y3
T: 613-736-7200
F: 613-736-8710

VALLEY ENGINEERING
(STRUCTURAL ENGINEERING)
521 DICKINSON AVENUE
OTTAWA, ONTARIO
K1V 7J4
T: 613-521-9002

ANTARES ENGINEERING
(M&E ENGINEERING)
1-159 COLONNADE ROAD
NEPEAN, ONTARIO
K2E 7L4
T: 613-723-6034

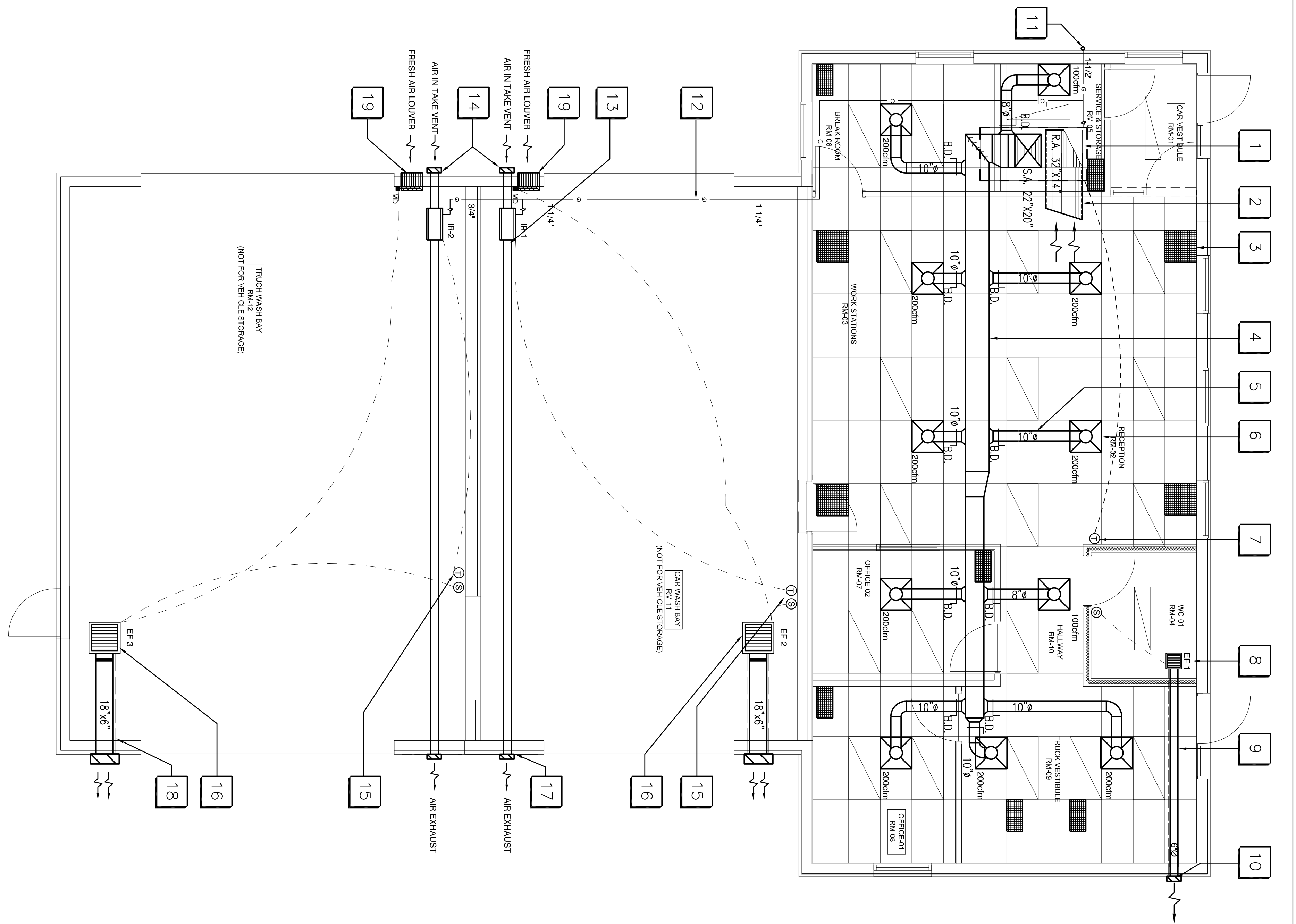
PROJECT TITLE:
225 HUNTING DRIVE
HUNTING/PALLADIUM DR. ENTERPRISE

DRAWING TITLE:
MECHANICAL
HVAC DISTRIBUTION

DRAWN BY	JOB NO.	DRAWING NO.
S.J.S.		M-2
CHECKED BY		
SCALE	15-610	
AS NOTED		

HVAC DRAWING NOTES:

1. PROVIDE NEW ROOF TOP GAS FIRED HVAC UNIT FOR DETAILS AND SPECIFICATIONS REFER TO SCHEDULE BELOW.
2. PROVIDE RETURN AIR CEILING MOUNTED DUCTWORK SIZE 28"x14" C/W ACOUSTICALLY LINED DUCT.
3. PROVIDE CEILING MOUNTED T-BAR CEILING, EGG SIZES, 24"x24" AND 24"x12" (TYPICAL AS SHOWN).
4. PROVIDE MAIN SUPPLY AIR DUCTWORK MOUNTED IN THE CEILING SPACE. PROVIDE ALL RELATED DUCT HANGERS AND SUPPORTS AS PER "SMAGNA" REQUIREMENTS. ALL SUPPLY DUCTWORK TO BE ACOUSTICALLY INSULATED. PROVIDE ALL BRANCH ROUND RIGID SPIRAL DUCTS C/W BALANCING DAMPERS. SIZES AS SHOWN. (TYPICAL FOR ALL).
5. PROVIDE 24"x24" CEILING MOUNTED SUPPLY AIR DIFFUSERS, 4-WAY, ALUMINUM CONSTRUCTION, AIR FLOW AND NECK SIZE AS SHOWN (TYPICAL FOR ALL).
6. PROVIDE WALL MOUNTED 7-DAY PROGRAMMABLE HEAT/COOL THERMOSTAT.
7. PROVIDE WASHROOM CEILING MOUNTED "EF-1" EXHAUST FAN. PROVIDE ALL CONNECTIONS REFER TO SCHEDULE BELOW. PROVIDE ON-OFF WALL SWITCH FOR CONTROLS.
8. PROVIDE ROUND RIGID SPIRAL DUCTWORK 6"ø C/W 1" THICK THERMAL INSULATION AND CANVAS.
9. PROVIDE EXHAUST AIR DUCT WALL CAP C/W GRANITY DAMPER AND BIRD SCREEN.
10. PROVIDE NEW 1.5" ø GAS PIPING "UP" TO ROOF SERVING NEW ROOF TOP HVAC UNIT. PROVIDE ALL PIPING HANGERS AND SUPPORTS AS PER NATURAL GAS CODE.
11. PROVIDE NEW 1.25" ø GAS SERVING NEW STRUCKED HEATERS. PROVIDE CEILING JOINT SUPPORTS AS PER NATURAL GAS CODE.
12. PROVIDE GAS FIRED INFRARED DUAL STAGE LOW INTENSITY HEATERS. EQUAL TO "SGHWAK" SERIES SW-4Z80. CAPACITY BOMB, MOUNTED AT 11 FEET A.F.F. PROVIDE WALL THERMOSTAT. (TYPICAL OF 2). PROVIDE ALL HANGERS AND SUPPORTS AS PER MANUFACTURER DIRECTIONS.
13. PROVIDE 4"ø INFRARED TUBING C/W AIR INTAKE AND BIRD SCREEN. INSTALLED AT HIGH CEILING HEIGHT.
14. THERMOSTAT OPERATING INFRARED HEATERS AND ON-OFF WALL SWITCH FOR EXHAUST FAN (TYPICAL OF 2).
15. PROVIDE NEW CABINET EXHAUST FANS "EF-2" AND "EF-3" MOUNTED AT CEILING JOINT SPACE. FOR DETAILS AND SPECIFICATIONS REFER TO SCHEDULE BELOW (TYPICAL OF 2). CONTROL BY CO2 SENSOR. FAN TO BE INTERLOCKED WITH FRESH AIR IN TAKE MOTORIZED DAMPER.
16. PROVIDE 4"ø INFRARED TUBING C/W FLUE BY-VENT TERMINATION (TYPICAL OF 2) AT HIGH CEILING HEIGHT. ALL WORK SHALL BE PERFORMED AS PER MANUFACTURER INSTRUCTIONS.
17. PROVIDE 18"x6" DUCTWORK C/W 1" THICK THERMAL INSULATION AND CANVAS. PROVIDE EXHAUST AIR DUCT WALL CAP C/W GRANITY DAMPER AND BIRD SCREEN (TYPICAL OF 2).
18. PROVIDE EXTERIOR WEATHER PROOF AIR INTAKE LOUVER SIZE 20"x16" EXTRUDED ALUMINUM EQUAL TO "CARNES" MODEL FK4 FLANGE FRAME C/W 120V, 1ø, MOTORIZED DAMPER (TYPICAL OF 2).



ROOF TOP UNIT SCHEDULE

UNIT REF.	AREA SERVED	MANUF.	MODEL NO.	COOLING		GAS HEATING		SUPPLY FAN EXT. SP. IN. W.C.	HP	MIN. FRESH AIR	V-4-Hz	REMARKS
				TOTAL MBH	SENS. MBH	INPUT MBH	OUTPUT MBH					
AC-1	OFFICES/WASH	LENNOX	042H9R131	48	45.2	125	92	2000	1.3"	1/2	200	600-3-60 COMBUSTION, VENT, RESON ROOF CURB UNIT SIZE: 87"x46" WEIGHT: 750 LBS.

- NOTES:**
1. MOTORS TO BE PREMIUM EFFICIENCY TYPE
 2. COMPLETE WITH VIBRATION ISOLATIONS
 3. CO-ORDINATE WITH ELECTRICAL TRADE
 4. 7 DAY PROGRAMMABLE HEAT/COOL THERMOSTAT
 5. UNIT C/W WEATHER PROOF DISCONNECT SWITCH

EXHAUST FAN SCHEDULE

TAG NO.	MANUFACTURER & MODEL	AIRFLOW	ELECTRICAL		SONES	OPTIONS
			POWER	V/PH/Hz		
EF-1	CARNES VCDB-08	75 CFM @ 63 Pa	146W	115/1/60	1.9	CEILING FAN, METAL GRILLE, WALL SWITCH
EF-2	CARNES VCDB-95	880 CFM @ 63 Pa	250W	115/1/60	2.5	CABINET FAN, METAL GRILLE, VAR. SPEED SWITCH
EF-3	CARNES VCDB-95	880 CFM @ 63 Pa	250W	115/1/60	2.5	CABINET FAN, METAL GRILLE, VAR. SPEED SWITCH