

GENERAL NOTES

1. DO NOT SCALE DRAWINGS. FIGURED DIMENSIONS ONLY TO BE USED.
2. IT IS THE RESPONSIBILITY OF THE CONTRACTOR TO CHECK AND VERIFY ALL DIMENSIONS ON SITE AND REPORT ANY DISCREPANCIES TO THE ARCHITECT.
3. ALL WORK DESCRIBED UNDER THIS CONTRACT TO COMPLY WITH THE MOST CURRENT EDITION OF THE ONTARIO BUILDING CODE AND/OR NATIONAL BUILDING CODE AND OTHER CODES AND STANDARDS REFERRED TO.



Anaxes Engineering Group Inc.
Professional Engineers and Technicians
1155 GERRARD STREET EAST, SUITE 212
TORONTO, ONTARIO M4M 1B7
Tel: (416) 223-5222 Fax: (416) 223-5228

ISSUE RECORD

No	DATE	REVISION
1	13-08-2018	ISSUED FOR CLIENT REVIEW
2	28-09-2018	ISSUED FOR BUILDING PERMIT
3	27-08-2019	ISSUED FOR TENDER
4	8-11-2019	ISSUED FOR CONSTRUCTION
5	14-02-2020	ISSUED FOR CONSTRUCTION

CLIENT:
ENTERPRISE RENT-A-CAR
RYAN FRILOTTE
T: 613-274-6894
F: 1-800-495-2412

CONSULTANTS:
HOLZMAN CONSULTANTS INC.
(LAND DEVELOPMENT CONSULTANTS)
1076 CASTLE HILL CRESS
OTTAWA, ONTARIO
K2C 2A8
T: 613-226-1388

MMM GROUP LTD
(CIVIL ENGINEERING)
1145 HUNT CLUB ROAD, SUITE 300
OTTAWA, ONTARIO
K1V 0Y3
T: 613-236-7200
F: 613-736-8710

VALLEY ENGINEERING
(STRUCTURAL ENGINEERING)
521 DICKINSON AVENUE
OTTAWA, ONTARIO
K1V 7J4
T: 613-521-9002

ANTARES ENGINEERING
(M&E ENGINEERING)
1-159 COLONNARD ROAD
NEPEAN, ONTARIO
K2E 7J4
T: 613-723-6034

PROJECT TITLE:
228 HUNTMAR DRIVE
HUNTMAR/PALLADIUM DR. ENTERPRISE
GARAGE

DRAWING TITLE:
ELECTRICAL
POWER DISTRIBUTION

DRAWN BY: S.J.S.
CHECKED BY: J.C.J.
SCALE: AS NOTED

JOB NO.: DRAWING NO.
SCALE: 1:50
DATE: 15-6-10
REVISION: E-2

ELECTRICAL

ELECTRICAL DRAWING NOTES:

1. PROVIDE NEW POWER DISTRIBUTION SYSTEM C/W TRANSFORMER AND DISTRIBUTION PANELS FOR DETAIL. REFER TO SPECIFICATIONS AND DRAWINGS E-1 TO E-4.
2. PROVIDE WALL MOUNTED POWER RECEPTACLE AND DATA/TEL OUTLETS TYPICAL AS SHOWN. EXACT LOCATIONS TO BE COORDINATED WITH FURNITURE INSTALLER PRIOR TO FINAL OUTLETS LOCATIONS.
3. PROVIDE FLUSH WALL MOUNTED ELECTRICAL FORCE FLOW HEATER FFH-11 4KW HEATING CAPACITY 200V 1Ø C/W BUILT IN THERMOSTAT. PROVIDE POWER FOR NEW 200V SERVICE UNIT.
4. PROVIDE POWER FOR NEW ELECTRIC HOT WATER TANK "HWT-1" 120V, 1Ø, 60HZ, 15A SERVICE.
5. PROVIDE DEDICATED WEATHER PROOF RECEPTACLE DEDICATED CIRCUIT 120V, 1Ø, 15A MOUNTED ON SIDE OF ROOF TOP UNIT.
6. COORDINATE FINAL LAYOUT WITH GENERAL TRACES PRIOR TO FINAL LOCATIONS (TYPICAL).
7. PROVIDE POWER FOR CEILING MOUNTED WASHROOM EXHAUST FAN, DEDICATED CIRCUIT 120V, 1Ø, 15A. ALL ELECTRICAL WORK IN THE BOTH WASH BAYS SHALL BE PROVIDED WITH WEATHER TIGHT "EMT" CONDUITS C/W WEATHER TIGHT CONNECTIONS AND FITTINGS (TYPICAL).
8. PROVIDE POWER FOR HIGH BAY MOUNTED WASH BAY INFRARED GAS HEATERS "IR-1" AND "IR-2". DEDICATED CIRCUIT 120V, 1Ø, 15A CONTROLLED BY WALL MOUNTED THERMOSTAT. ALL ELECTRICAL WORK IN THE BOTH WASH BAYS SHALL BE PROVIDED WITH WEATHER TIGHT "EMT" CONDUITS C/W WEATHER TIGHT CONNECTIONS AND FITTINGS (TYPICAL).
9. PROVIDE POWER FOR HIGH BAY MOUNTED WASH DEDICATED CIRCUIT 120V, 1Ø, 15A. ALL ELECTRICAL WORK IN THE BOTH WASH BAYS SHALL BE PROVIDED WITH WEATHER TIGHT "EMT" CONDUITS C/W WEATHER TIGHT CONNECTIONS AND FITTINGS (TYPICAL).
10. PROVIDE POWER FOR HIGH BAY MOUNTED WASH BAY INFRARED GAS HEATERS "IR-1" AND "IR-2". DEDICATED CIRCUIT 120V, 1Ø, 15A CONTROLLED BY WALL MOUNTED THERMOSTAT. ALL ELECTRICAL WORK IN THE BOTH WASH BAYS SHALL BE PROVIDED WITH WEATHER TIGHT "EMT" CONDUITS C/W WEATHER TIGHT CONNECTIONS AND FITTINGS (TYPICAL).
11. PROVIDE POWER FOR BARBIER-FREE UNIVERSAL WASHROOM AUTOMATIC DOOR OPENER REFER TO ARCHITECTURAL SPECIFICATIONS FOR EXACT LOCATION OF POWER CIRCUIT TERMINATION AND RELATED CONTROLS TO BE COORDINATED WITH DOOR INSTALLER.
12. PROVIDE POWER FOR GARAGE OVERHEAD AUTOMATIC DOOR OPERATOR REFER TO ARCHITECTURAL SPECIFICATIONS FOR EXACT LOCATION OF POWER CIRCUIT TERMINATION AND RELATED CONTROLS TO BE COORDINATED WITH DOOR INSTALLER.
13. PROVIDE POWER FOR BARBIER-FREE UNIVERSAL WASHROOM AUTOMATIC DOOR OPENER REFER TO ARCHITECTURAL SPECIFICATIONS FOR EXACT LOCATION OF POWER CIRCUIT TERMINATION AND RELATED CONTROLS TO BE COORDINATED WITH DOOR INSTALLER.
14. PROVIDE POWER FOR GARAGE OVERHEAD AUTOMATIC DOOR OPERATOR REFER TO ARCHITECTURAL SPECIFICATIONS FOR EXACT LOCATION OF POWER CIRCUIT TERMINATION AND RELATED CONTROLS TO BE COORDINATED WITH DOOR INSTALLER.
15. VERIFY SENSOR LOCATION WITH OWNER PRIOR TO INSTALLATION.

PANEL BOARD SCHEDULE # DP1

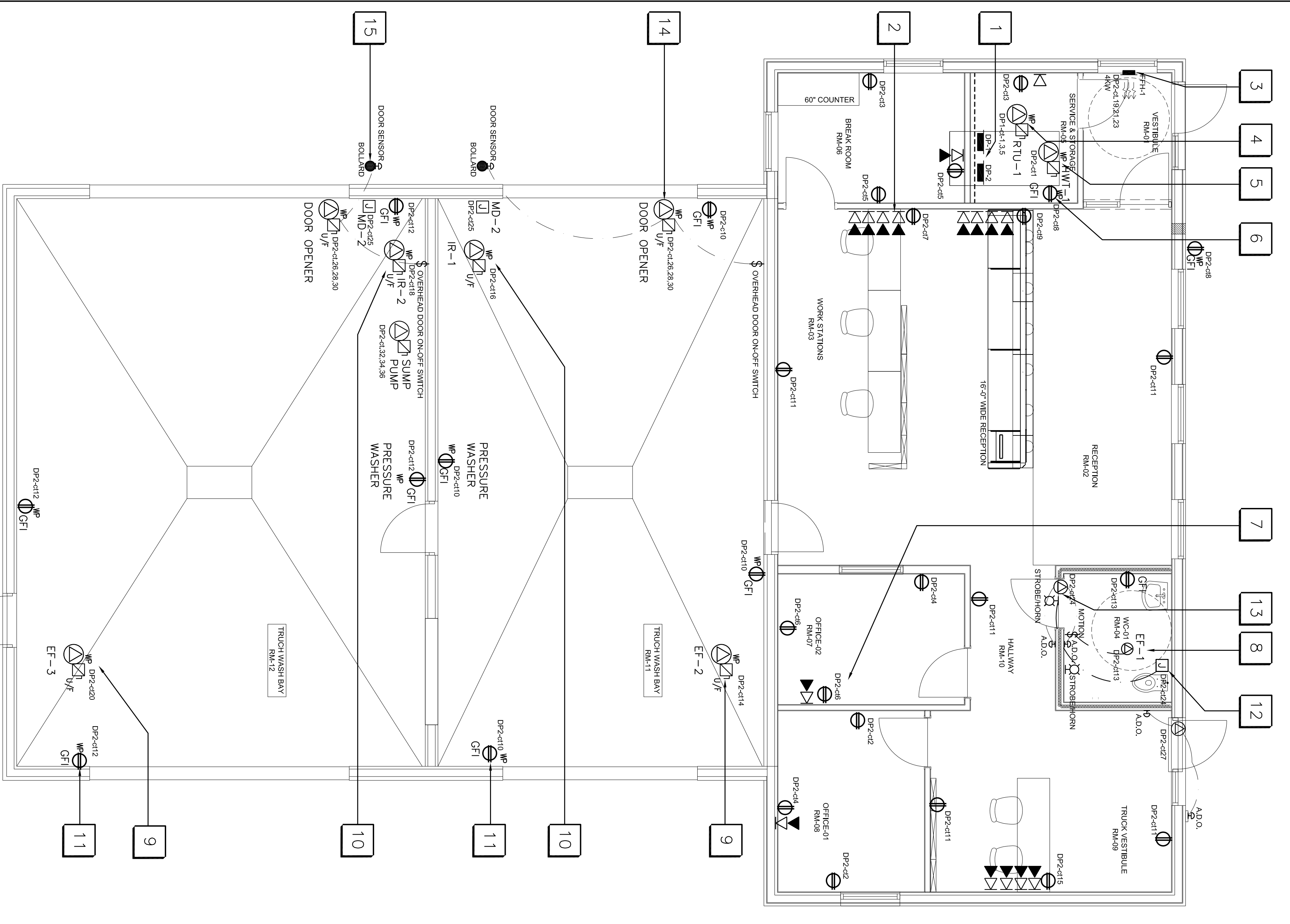
NO. OF CIRCUITS	TYPE BREAKER	FLUSHED SURFACE
42	TYPE B	FLUSHED
24	TYPE B	FLUSHED
24	TYPE B	FLUSHED

PANEL BOARD SCHEDULE # DP2

NO. OF CIRCUITS	TYPE BREAKER	FLUSHED SURFACE
42	TYPE B	FLUSHED
24	TYPE B	FLUSHED
24	TYPE B	FLUSHED

- NOTES:**
- * LOCK-ON BREAKER
 - ** PROVIDE MAIN PANEL 100 AMP CAPACITY INCOMING POWER CIRCUIT BREAKER

- NOTES:**
- * LOCK-ON BREAKER
 - ** PROVIDE MAIN PANEL 125 AMP CAPACITY INCOMING POWER CIRCUIT BREAKER

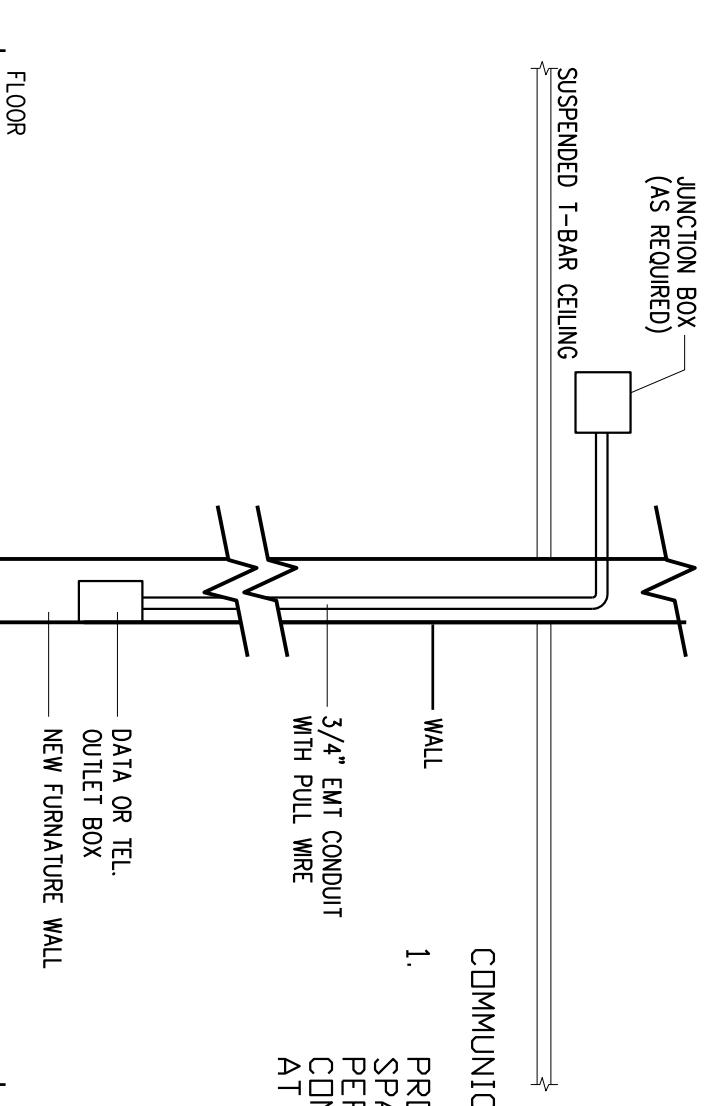


EXTERIOR LIGHTING SCHEDULE

SYMBOL	LABEL	QUANTITY	MANUFACTURER	CATALOGUE NUMBER	DESCRIPTION	LAMP	NO. OF LAMPS	LUMENS PER LAMP	LIGHT LOSS FACTOR	WATTAGE
A	1	1	PHILIPS GARDCO	ASA-128G1-700-2L-HSS	PHILIPS LARGE AEROSCAPE AREA WITH TYPE 2L OPTICS WITH HOUSE SIDE SHIELD	LENIGNE 2.2 TIGHT ARRAY OF 128 LEDs DRIVEN AT 700mA	1	17506	0.85	277.6
B	2	2	PHILIPS GARDCO	ASA-128G1-700-4L-HSS	PHILIPS LARGE AEROSCAPE AREA WITH TYPE 4L OPTICS WITH HOUSE SIDE SHIELD	LENIGNE 2.2 LIGHT ARRAY OF 128 LEDs DRIVEN AT 700mA	1	17979	0.85	278
C	5	5	PHILIPS STONOCO/KEENE	LPM32-7	LYTERPO 32 LED MEDIUM WALL SCONCE CAST GRAY ENAMEL ALUMINUM AND ENCLOSURE	32 WHITE LEDs WITH CLEAR LENS OPTICS BELOW LIGHT	1	6911	0.85	70.5

AUTO DOOR OPENERS NOTE:

GARAGE DOOR PHOTO EYE TO BE SUPPLIED WITH GARAGE DOOR AND INSTALLED BY ELECTRICAL CONTRACTOR. PROVIDE 24V TO TRANSMITTER AND RECEIVER COORDINATE INSTALLATION OF BACK BOX AND CONDUIT IN BOLLARD. PROVIDE 1Ø CONDUIT TO TRANSMITTER. PROVIDE 24V AND CONTROL (3W/4GRND) RECEPTACLE TO RECEIVER. CONTROL CONDUIT TO BE RAMEAD. C/W CONDUITS TO BE CONTROL SEQUENCE ON ED GARAGE DOOR TO OPEN ON EYE ACTIVATION (TYPICAL OF 2).



COMMUNICATION NOTE:
PROVIDE SINGLE GANG BACKBOX C/W 3/4" CONDUIT TO CEILING SPACE FOR NEW COMMUNICATIONS OUTLETS. MOUNTING HEIGHT AS PER ARCHITECTURAL DRAWINGS UNLESS NOTED OTHERWISE. CONDUITS TO BE RAMEAD. C/W PULL CORB AND NYLON BUSHINGS AT EACH END. CABLING BY OTHERS.

1 ELECTRICAL FLOOR PLAN
SCALE: 1 : 50