


*Project - Enterprise Rent A Car Kanata*

	SHOP DRAWING DATA SHEET
<p>Affixing this stamp confirms that an administrative approval and/or a verification of compliance with shop drawings or specifications was made, but does not entail the liability of the author of the work or its owner with regards to this shop drawing or data sheet, for which the contractor is the sole responsible.</p>	
<input checked="" type="checkbox"/> Reviewed	<input type="checkbox"/> Reviewed as noted
<input type="checkbox"/> Rejected	<input type="checkbox"/> Filed for records
<p>The contractor, supplier and/or sub-contractor is responsible for: confirming and coordinating all quantities and dimensions; selecting fabrication processes and techniques of construction; coordinating his or her work with that of all other trades and performing all work in a safe and satisfactory manner.</p>	
By: <u>Ding Bang Yang</u>	Date: <u>2020/02/12</u>
Project #: <u>1015105</u>	

reviewed pages 2 to 14

all subdrain knockouts shall be 790mm from the top of grate

**REVIEWED**

By Pat Newton at 2:34 pm, Feb 10, 2020



Structure: CB 01  
Job Number: 10994366  
Job Name: Enterprise Rent a Car  
Job Location: 225 Huntmar Drive

Specification: 600x600 Catch Basin ✓

Contractor: Pro-X

Based on:

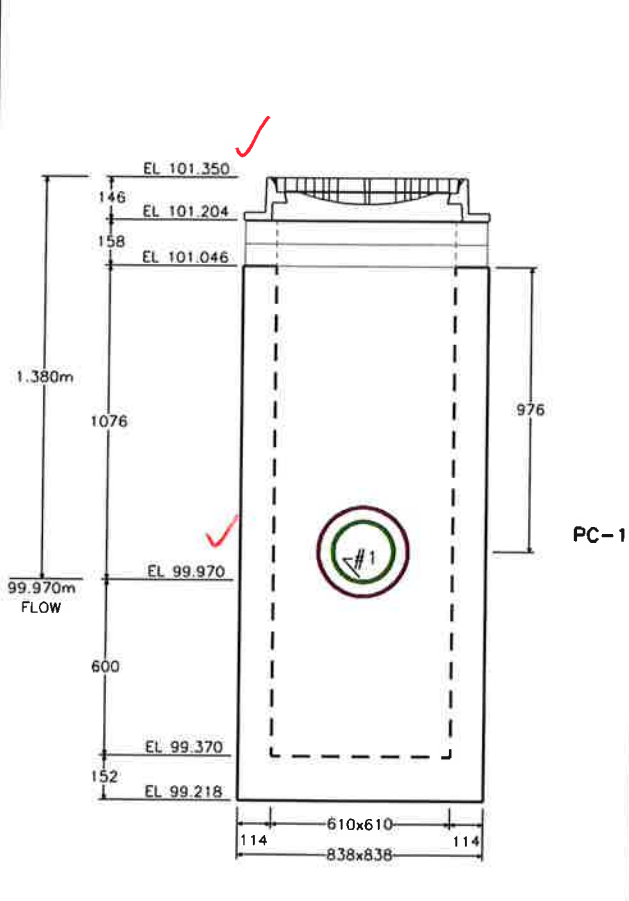
Take Off By: 2/10/2020 wardowskic

<b>Design Build Height</b>		<b>Stack Build Height</b>		<b>Manufacture Date:</b>
Top of Casting	+ 101.350 ✓	Frame	+ 0.146m	
Outlet Invert	- 99.970m ✓	Adjustment	+ 0.158m	<b>Ship Date:</b>
Sump	+ 0.600m	Base Gain	+ 1.676m	<b>Frame:</b> S19
<b>Design Height</b>	<b>= 1.980m</b>	<b>Design Height</b>	<b>= 1.980m</b>	<b>Grate/Cover:</b>
		Floor Thickness	+ 0.152m	<b>Channel:</b> No Benching
		<b>Outside Height</b>	<b>= 2.132m</b>	<b>Notes:</b>

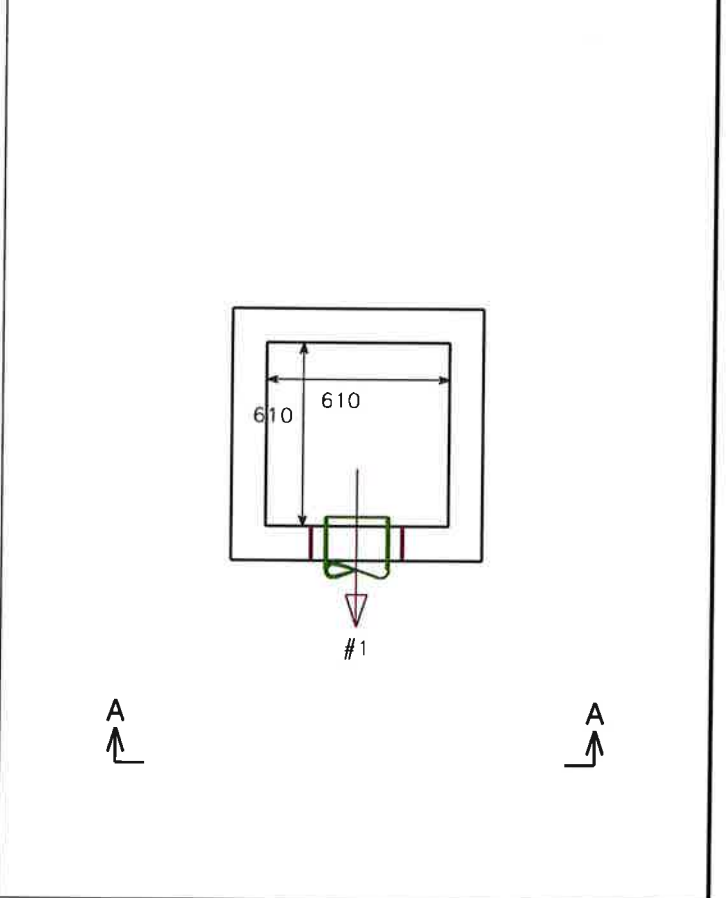
**Openings**

ID	Invert	Pipe Size	Hole Size	Connector	Angle
#1	99.970m	200 PVC Sdr 35 ✓	305mm Ø	S406-12A Kor-N-Seal Boot	0°

**Elevation (View A-A)**



**Plan View**



**BOM For Stack**

ID	Description	Qty.	Weight
PC-1	600x600 mm STOCK CATCH BASIN 1.829 m 114 mm	1	1,622
<b>Totals (pieces, kgs.)</b>		<b>1</b>	<b>1,622</b>



**Structure:** CB 03  
**Job Number:** 10994366  
**Job Name:** Enterprise Rent a Car  
**Job Location:** 225 Huntmar Drive

**Specification:** 600x600 Catch Basin ✓

**Contractor:** Pro-X

**Take Off By:** 2/10/2020 wardowskic

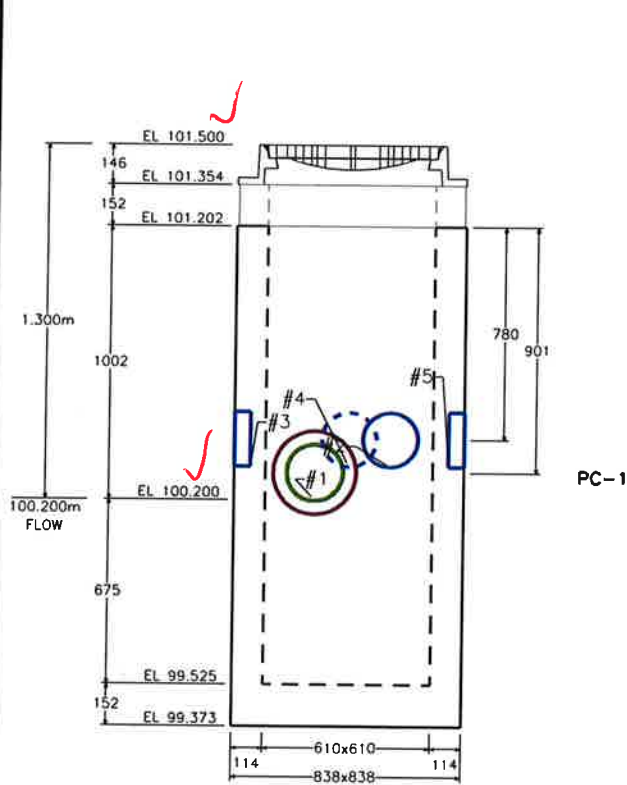
**Based on:**

Design Build Height		Stack Build Height		Manufacture Date:
Top of Casting	+ 101.500 ✓	Frame	+ 0.146m	
Outlet Invert	- 100.200 ✓	Adjustment	+ 0.152m	<b>Ship Date:</b>
Sump	+ 0.600m	Base Gain	+ 1.602m	<b>Frame:</b> S19
<b>Design Height</b>	<b>= 1.900m</b>	<b>Design Height</b>	<b>= 1.900m</b>	<b>Grate/Cover:</b>
		To Floor	+ 0.075m	<b>Channel:</b> No Benching
		Floor Thickness	+ 0.152m	<b>Notes:</b>
		<b>Outside Height</b>	<b>= 2.127m</b>	

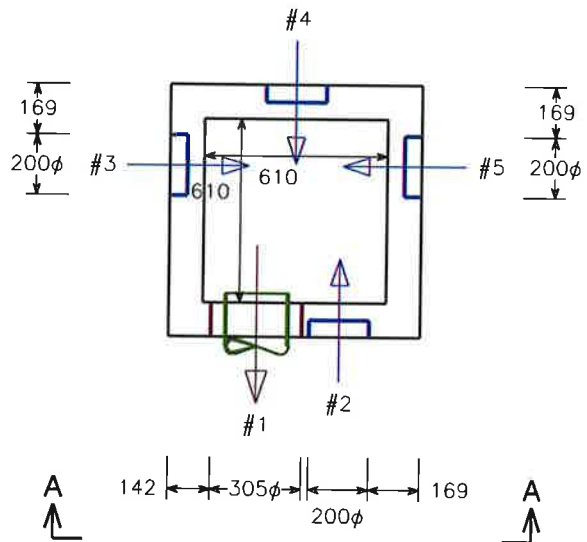
**Openings**

ID	Invert	Pipe Size	Hole Size	Connector	Angle
#1	100.200m ✓	200 PVC Sdr 35 ✓	305mm Ø	S406-12A Kor-N-Seal Boot	0°
#2	100.322m	50-200 Subdrain	200mm Ø	Mortar	0°
#3	100.322m	50-200 Subdrain	200mm Ø	Mortar	90°
#4	100.322m	50-200 Subdrain	200mm Ø	Mortar	180°
#5	100.322m	50-200 Subdrain	200mm Ø	Mortar	270°

**Elevation (View A-A)**



**Plan View**



**BOM For Stack**

ID	Description	Qty.	Weight
PC-1	600x600 mm SPECIAL CATCH BASIN 1.829 m 114	1	1,605
<b>Totals (pieces, kgs.)</b>		<b>1</b>	<b>1,605</b>



**Structure:** CB 04  
**Job Number:** 10994366  
**Job Name:** Enterprise Rent a Car  
**Job Location:** 225 Huntmar Drive

**Specification:** 600x600 Catch Basin ✓

**Contractor:** Pro-X

**Take Off By:** 2/10/2020 wardowskic

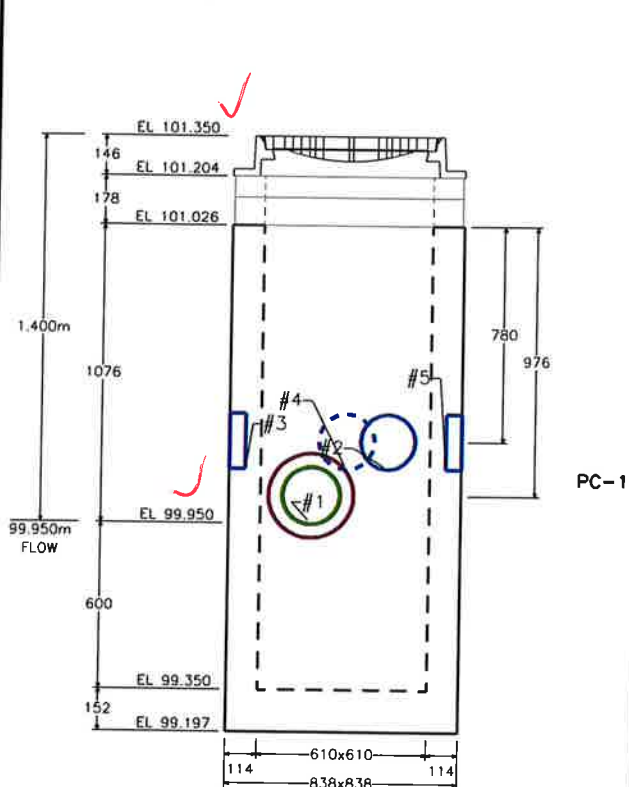
**Based on:**

Design Build Height		Stack Build Height		Manufacture Date:	
Top of Casting	+ 101.350 ✓	Frame	+ 0.146m		
Outlet Invert	- 99.950m ✓	Adjustment	+ 0.178m	<b>Ship Date:</b>	
Sump	+ 0.600m	Base Gain	+ 1.676m	<b>Frame:</b> S19	
<b>Design Height</b>	<b>= 2.000m</b>	<b>Design Height</b>	<b>= 2.000m</b>	<b>Grate/Cover:</b>	
		To Floor	+ 0.000m	<b>Channel:</b> No Benching	
		Floor Thickness	+ 0.152m	<b>Notes:</b>	
		<b>Outside Height</b>	<b>= 2.153m</b>		

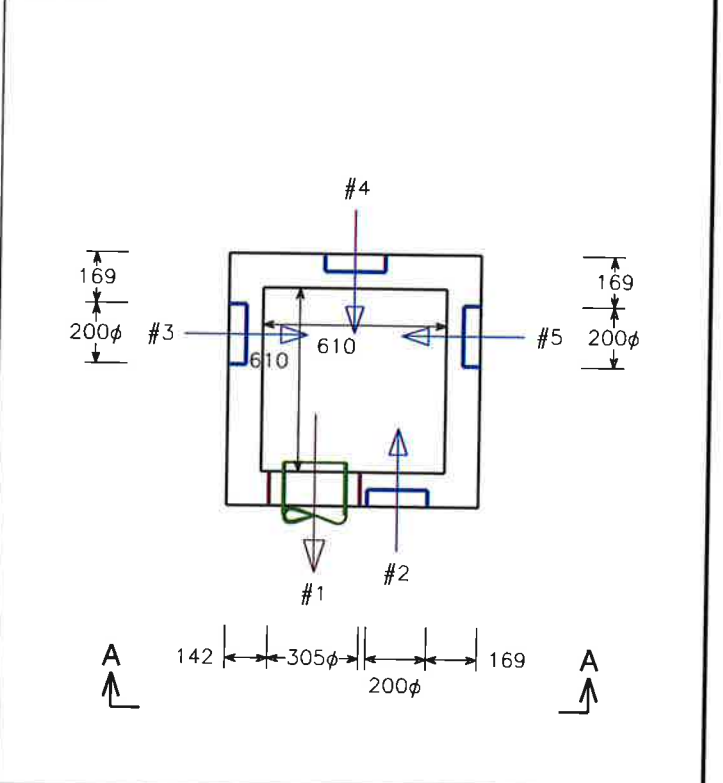
**Openings**

ID	Invert	Pipe Size	Hole Size	Connector	Angle
#1	99.950m	200 PVC Sdr 35	305mm Ø	S406-12A Kor-N-Seal Boot	0°
#2	100.146m	50-200 Subdrain	200mm Ø	Mortar	0°
#3	100.146m	50-200 Subdrain	200mm Ø	Mortar	90°
#4	100.146m	50-200 Subdrain	200mm Ø	Mortar	180°
#5	100.146m	50-200 Subdrain	200mm Ø	Mortar	270°

**Elevation (View A-A)**



**Plan View**



**BOM For Stack**

ID	Description	Qty.	Weight
PC-1	600x600 mm STOCK CATCH BASIN 1.829 m 114 ml	1	1,605
<b>Totals (pieces, kgs.)</b>		<b>1</b>	<b>1,605</b>



**Structure:** CB 05  
**Job Number:** 10994366  
**Job Name:** Enterprise Rent a Car  
**Job Location:** 225 Huntmar Drive

**Specification:** 600x600 Catch Basin

**Contractor:** Pro-X

**Based on:**

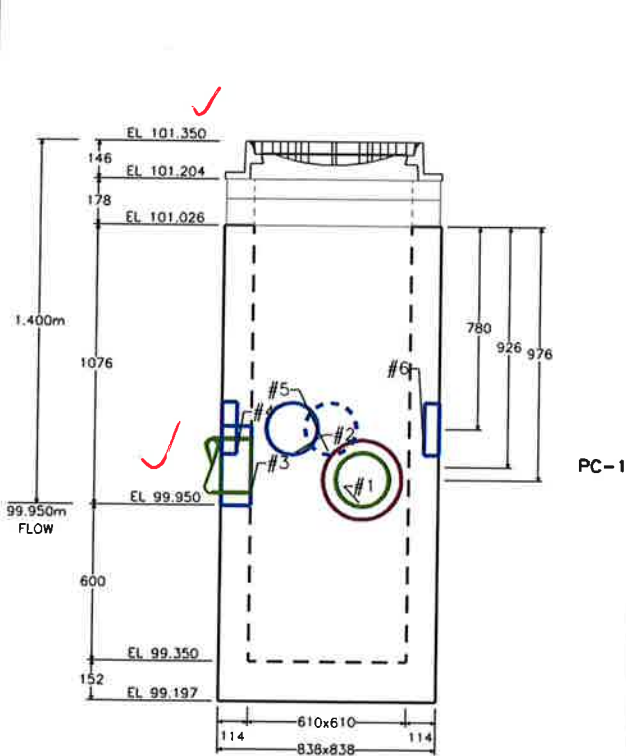
**Take Off By:** 2/10/2020 wardowski

Design Build Height		Stack Build Height		Manufacture Date:
Top of Casting	+ 101.350	Frame	+ 0.146m	
Outlet Invert	- 99.950m	Adjustment	+ 0.178m	Ship Date:
Sump	+ 0.600m	Base Gain	+ 1.676m	Frame: S19
<b>Design Height</b>	<b>= 2.000m</b>	<b>Design Height</b>	<b>= 2.000m</b>	<b>Grate/Cover:</b>
		To Floor	+ 0.000m	<b>Channel:</b> No Benching
		Floor Thickness	+ 0.152m	<b>Notes:</b>
		<b>Outside Height</b>	<b>= 2.153m</b>	

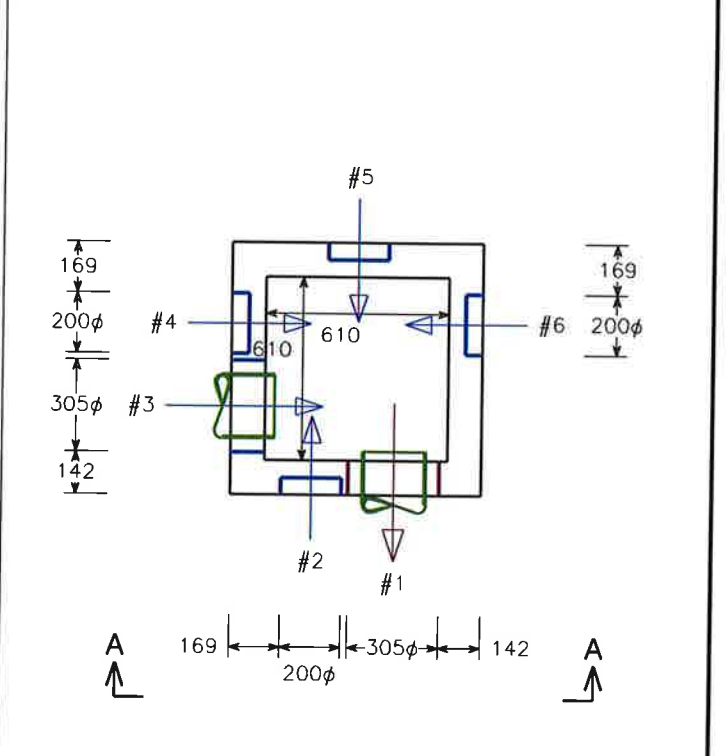
**Openings**

ID	Invert	Pipe Size	Hole Size	Connector	Angle
#1	99.950m	200 PVC Sdr 35	305mm Ø	S406-12A Kor-N-Seal Boot	0°
#2	100.146m	50-200 Subdrain	200mm Ø	Mortar	0°
#3	100.000m	200 PVC Sdr 35	305mm Ø	S406-12A Kor-N-Seal Boot	90°
#4	100.146m	50-200 Subdrain	200mm Ø	Mortar	90°
#5	100.146m	50-200 Subdrain	200mm Ø	Mortar	180°
#6	100.146m	50-200 Subdrain	200mm Ø	Mortar	270°

**Elevation (View A-A)**



**Plan View**



**BOM For Stack**

ID	Description	Qty.	Weight
PC-1	600x600 mm SPECIAL CATCH BASIN 1.829 m 114	1	1,585
<b>Totals (pieces, kgs.)</b>		<b>1</b>	<b>1,585</b>



**Structure:** CB 06  
**Job Number:** 10994366  
**Job Name:** Enterprise Rent a Car  
**Job Location:** 225 Huntmar Drive

**Specification:** 600x600 Catch Basin ✓

**Contractor:** Pro-X

**Based on:**

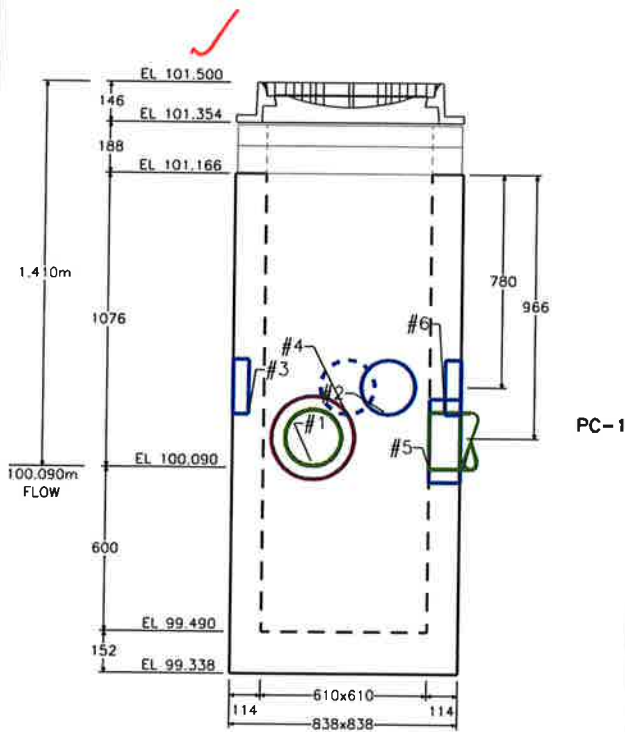
**Take Off By:** 12/3/2019 A Medina

<b>Design Build Height</b> Top of Casting + 101.500 ✓ Lowest Invert - 100.090 ✓ Sump + 0.600m <b>Design Height = 2.010m</b>		<b>Stack Build Height</b> Frame + 0.146m Adjustment + 0.188m Base Gain + 1.676m <b>Design Height = 2.010m</b> Floor Thickness + 0.152m <b>Outside Height = 2.162m</b>		<b>Manufacture Date:</b> 
				<b>Ship Date:</b> 
				<b>Frame:</b> S19
				<b>Grate/Cover:</b>
				<b>Channel:</b> No Benching
				<b>Notes:</b>

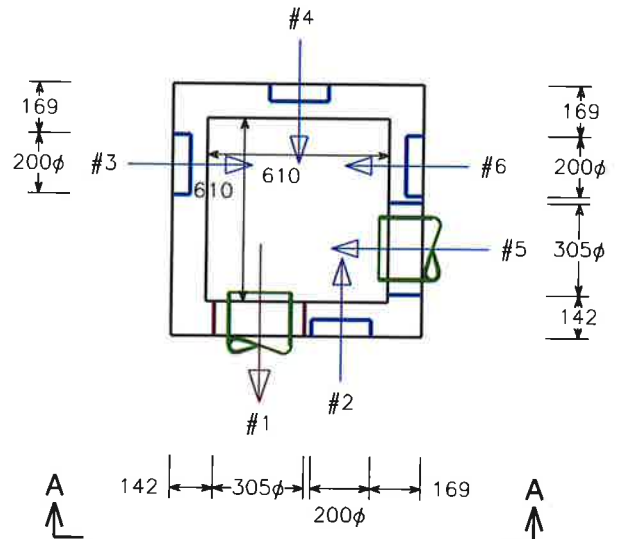
**Openings** 100.03

ID	Invert	Pipe Size	Hole Size	Connector	Angle
#1	100.100m	200 PVC Sdr 35	305mm Ø	S406-12A Kor-N-Seal Boot	0°
#2	100.286m	50-200 Subdrain	200mm Ø	Mortar	0°
#3	100.286m	50-200 Subdrain	200mm Ø	Mortar	90°
#4	100.286m	50-200 Subdrain	200mm Ø	Mortar	180°
#5	100.090m	200 PVC Sdr 35	305mm Ø	S406-12A Kor-N-Seal Boot	270°
#6	100.286m	50-200 Subdrain	200mm Ø	Mortar	270°

**Elevation (View A-A)**



**Plan View**



**BOM For Stack**

ID	Description	Qty.	Weight
PC-1	600x600 mm SPECIAL CATCH BASIN 1.829 m 114 l	1	1,585
<b>Totals (pieces, kgs.)</b>		<b>1</b>	<b>1,585</b>



**Structure:** CB 07  
**Job Number:** 10994366  
**Job Name:** Enterprise Rent a Car  
**Job Location:** 225 Huntmar Drive

**Specification:** 600x600 Catch Basin ✓

**Contractor:** Pro-X

**Based on:**

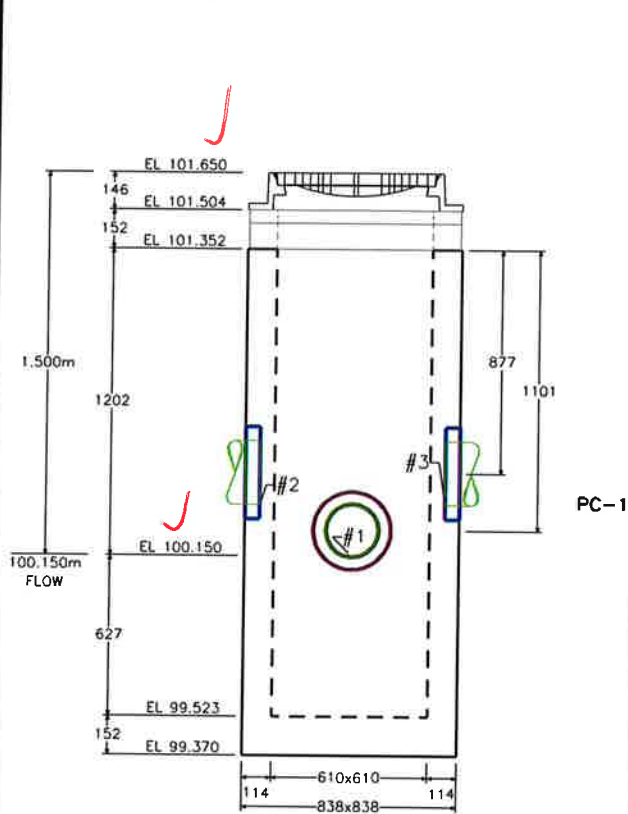
**Take Off By:** 2/10/2020 wardowskic

<b>Design Build Height</b> Top of Casting + 101.650 Outlet Invert - 100.150 Sump + 0.600m <b>Design Height = 2.100m</b>		<b>Stack Build Height</b> Frame + 0.146m Adjustment + 0.152m Base Gain + 1.802m <b>Design Height = 2.100m</b> To Floor + 0.027m Floor Thickness + 0.152m <b>Outside Height = 2.280m</b>		<b>Manufacture Date:</b>  <b>Ship Date:</b>  <b>Frame:</b> S19 <b>Grate/Cover:</b>  <b>Channel:</b> No Benching <b>Notes:</b> No inverts provided for 250 Subdrain; please confirm acceptability of inverts chosen?
---	--	--	--	---

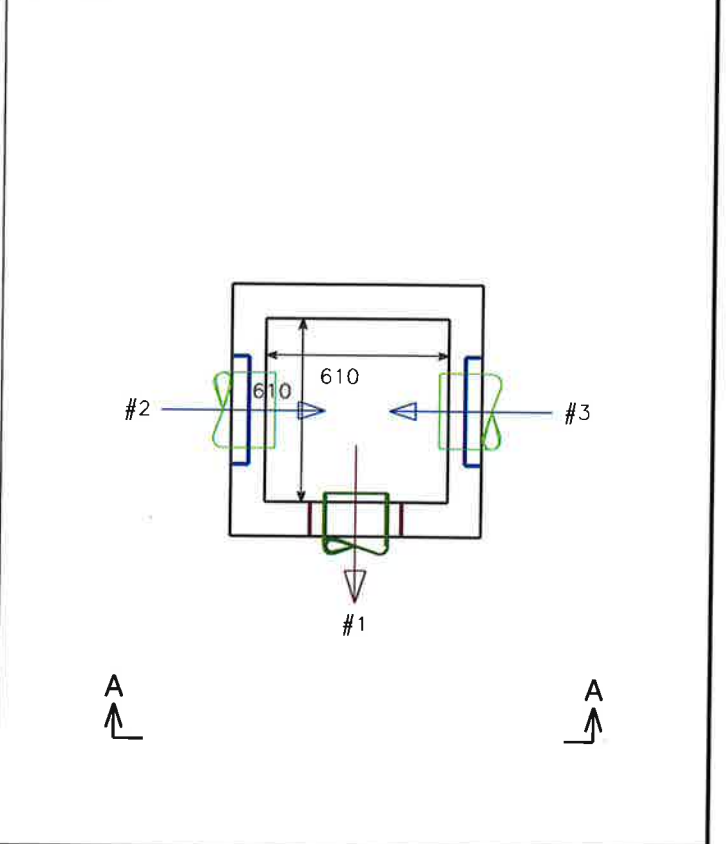
**Openings**

ID	Invert	Pipe Size	Hole Size	Connector	Angle
#1	100.150m	200 PVC Sdr 35	305mm Ø	S406-12A Kor-N-Seal Boot	0°
#2	100.350m	250 Subdrain	360mm Ø	Mortar Knockout	90°
#3	100.350m	250 Subdrain	360mm Ø	Mortar Knockout	270°

**Elevation (View A-A)**



**Plan View**



**BOM For Stack**

ID	Description	Qty.	Weight
PC-1	600x600 mm SPECIAL CATCH BASIN 1.981 m 114	1	1,742
<b>Totals (pieces, kgs.)</b>		<b>1</b>	<b>1,742</b>



**Structure:** CB 08  
**Job Number:** 10994366  
**Job Name:** Enterprise Rent a Car  
**Job Location:** 225 Huntmar Drive

**Specification:** 600x600 Catch Basin

**Contractor:** Pro-X

**Based on:**

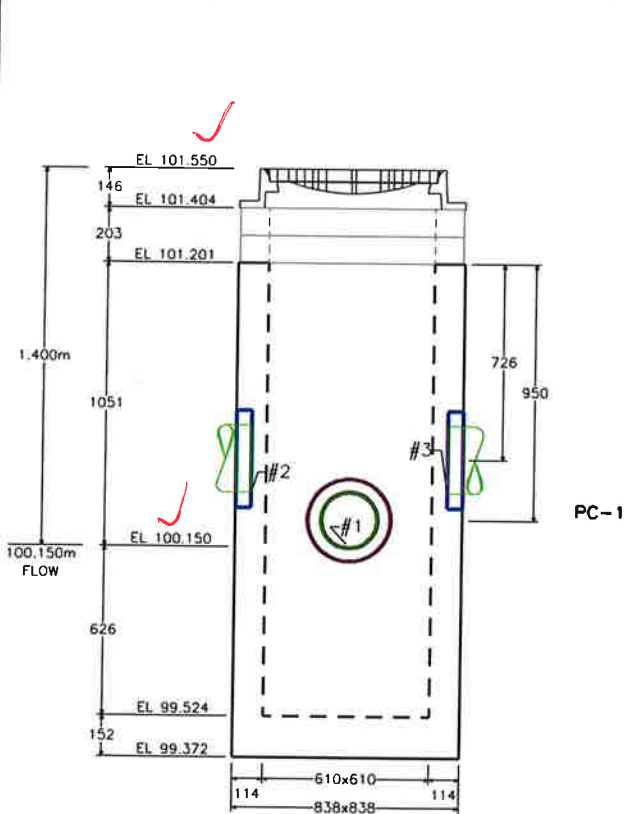
**Take Off By:** 2/10/2020 wardowskic

Design Build Height		Stack Build Height		Manufacture Date:
Top of Casting	+ 101.550	Frame	+ 0.146m	
Outlet Invert	- 100.150	Adjustment	+ 0.203m	Ship Date:
Sump	+ 0.600m	Base Gain	+ 1.651m	Frame: S19
<b>Design Height</b>	<b>= 2.000m</b>	<b>Design Height</b>	<b>= 2.000m</b>	Grate/Cover:
		To Floor	+ 0.026m	Channel: No Benching
		Floor Thickness	+ 0.152m	Notes: No inverts provided for 250 Subdrain; please confirm acceptability of inverts chosen?
		<b>Outside Height</b>	<b>= 2.178m</b>	

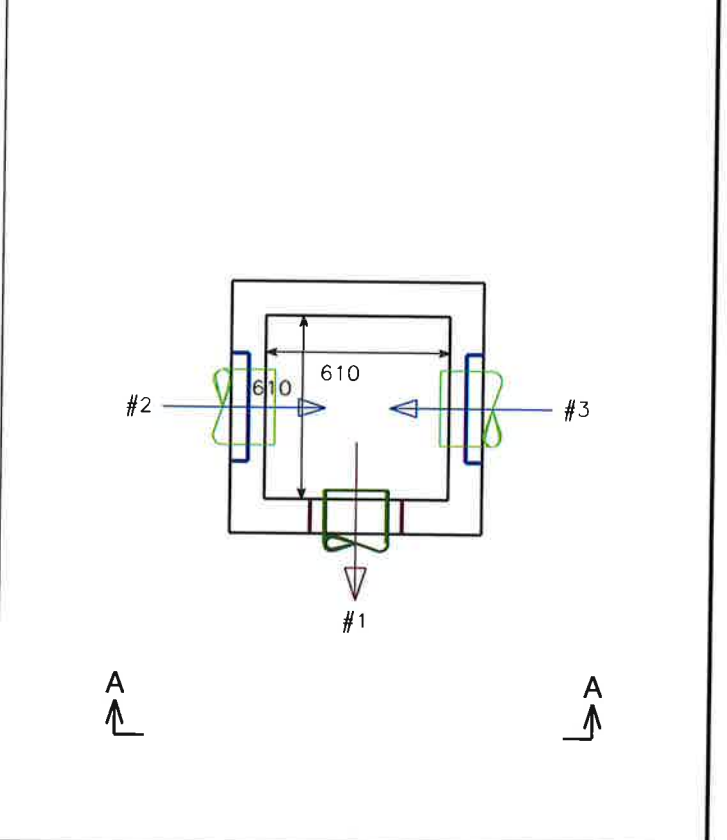
**Openings**

ID	Invert	Pipe Size	Hole Size	Connector	Angle
#1	100.150m	200 PVC Sdr 35	305mm Ø	S406-12A Kor-N-Seal Boot	0°
#2	100.350m	250 Subdrain	360mm Ø	Mortar Knockout	90°
#3	100.350m	250 Subdrain	360mm Ø	Mortar Knockout	270°

**Elevation (View A-A)**



**Plan View**



**BOM For Stack**

ID	Description	Qty.	Weight
PC-1	600x600 mm SPECIAL CATCH BASIN 1.829 m 114	1	1,622
<b>Totals (pieces, kgs.)</b>		<b>1</b>	<b>1,622</b>



**Structure:** CBMH 01  
**Job Number:** 10994366  
**Job Name:** Enterprise Rent a Car  
**Job Location:** 225 Huntmar Drive

**Specification:** 1200 Monobase, 686 Top, 300 Sump

**Contractor:** Pro-X

**Based on:**

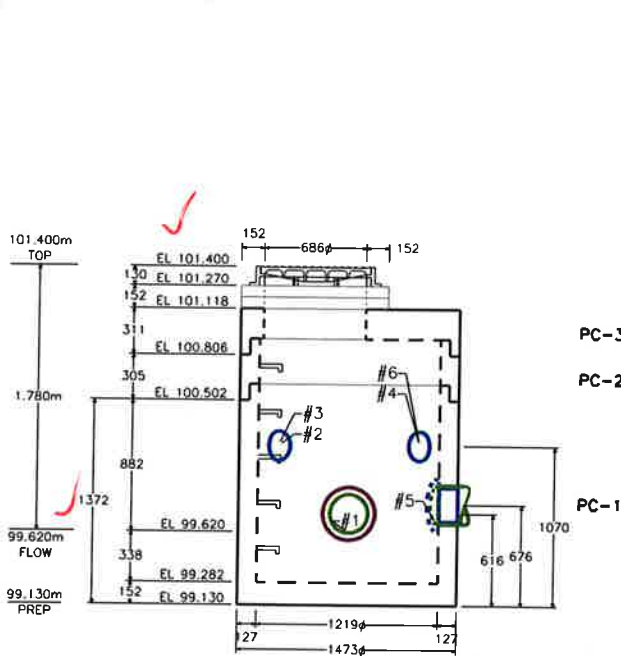
**Take Off By:** 2/10/2020 wardowskic

Design Build Height		Stack Build Height		Manufacture Date:	
Top of Casting	+ 101.400	Frame	+ 0.130m		
Outlet Invert	- 99.620m	Adjustment	+ 0.152m	<b>Ship Date:</b>	
Sump	+ 0.300m	Eccentric Slab	+ 0.311m	<b>Frame:</b> S28.1	
<b>Design Height</b>	<b>= 2.080m</b>	Risers	+ 0.305m	<b>Grate/Cover:</b>	
		Base Gain	+ 1.182m	<b>Channel:</b> No Benching	
		<b>Design Height</b>	<b>= 2.080m</b>	<b>Notes:</b>	
		To Floor	+ 0.038m		
		Floor Thickness	+ 0.152m		
		<b>Outside Height</b>	<b>= 2.270m</b>		

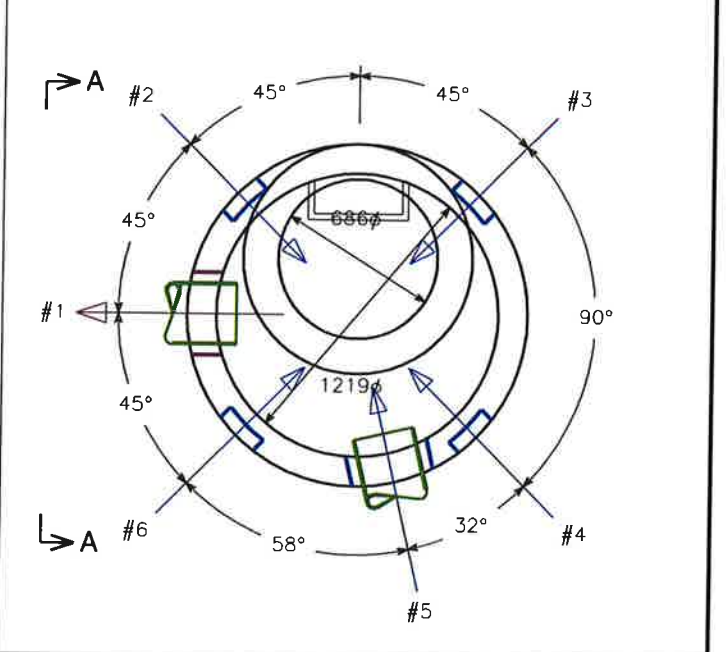
**Openings**

ID	Invert	Pipe Size	Hole Size	Connector	Angle
#1	99.620m	250 PVC Sdr 35	356mm Ø	S106-14A Kor-N-Seal Boot	0°
#2	100.200m	150 Subdrain	200mm Ø	Mortar Knockout	45°
#3	100.200m	150 Subdrain	200mm Ø	Mortar Knockout	135°
#4	100.200m	150 Subdrain	200mm Ø	Mortar Knockout	225°
#5	99.680m	250 PVC Sdr 35	356mm Ø	S106-14A Kor-N-Seal Boot	257°
#6	100.200m	150 Subdrain	200mm Ø	Mortar Knockout	315°

**Elevation (View A-A)**



**Plan View**



**BOM For Stack**

ID	Description	Qty.	Weight
	1200 mm MANHOLE GASKET	2	
PC-3	1200 mm RG 0.311 m MH CAP	1	725
PC-2	1200 mm RG 0.305 m MH RISER	1	393
PC-1	1200 mm RG 1.219 m MH BASE	1	2,198
<b>Totals (pieces, kgs.)</b>		<b>3</b>	<b>3,316</b>



**Structure:** CBMH 02  
**Job Number:** 10994366  
**Job Name:** Enterprise Rent a Car  
**Job Location:** 225 Huntmar Drive

**Specification:** 1200 Monobase, 686 Top, 300 Sump ✓

**Contractor:** Pro-X

**Based on:**

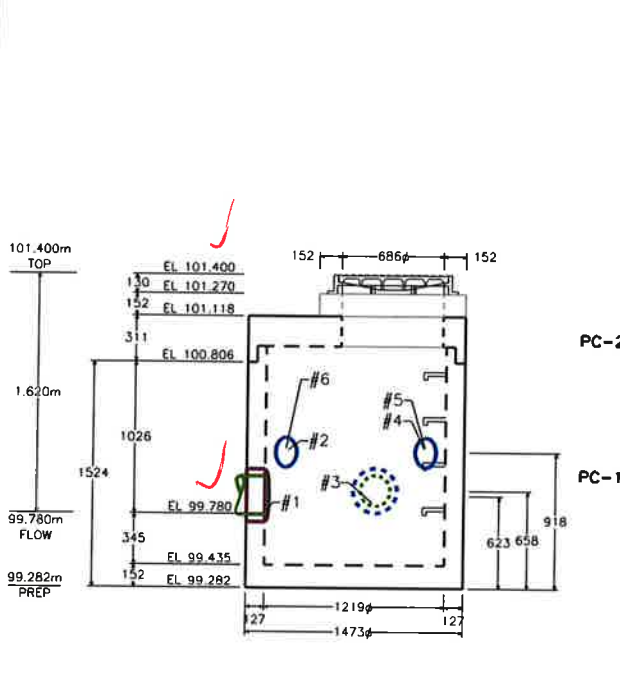
**Take Off By:** 2/10/2020 wardowskic

<b>Design Build Height</b> Top of Casting + 101.400 Outlet Invert - 99.780m Sump + 0.300m <b>Design Height = 1.920m</b>		<b>Stack Build Height</b> Frame + 0.130m Adjustment + 0.152m Eccentric Slab + 0.311m Base Gain + 1.326m <b>Design Height = 1.920m</b> To Floor + 0.045m Floor Thickness + 0.152m <b>Outside Height = 2.118m</b>		<b>Manufacture Date:</b> <b>Ship Date:</b> <b>Frame:</b> S28.1 ✓ <b>Grate/Cover:</b> <b>Channel:</b> No Benching <b>Notes:</b>
---	--	---	--	---

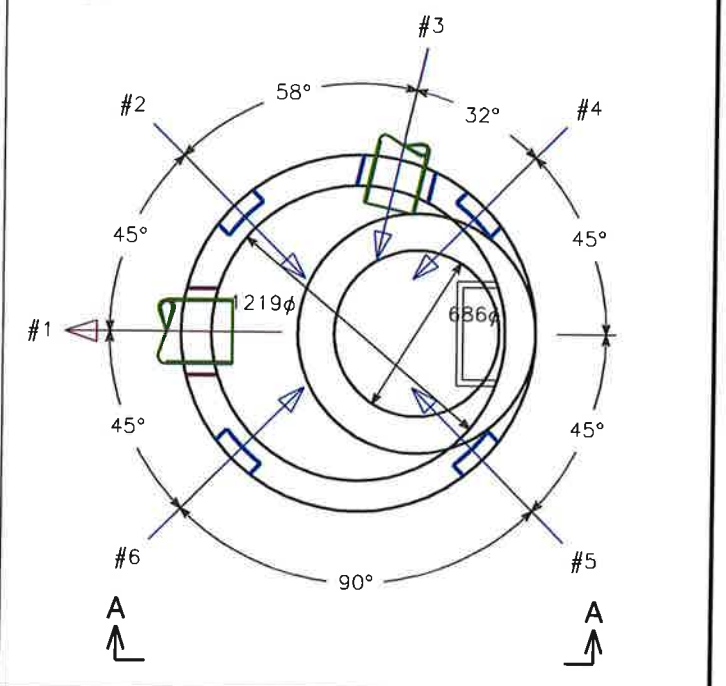
**Openings**

ID	Invert	Pipe Size	Hole Size	Connector	Angle
#1	99.780m	250 PVC Sdr 35	356mm Ø	S106-14A Kor-N-Seal Boot	0°
#2	100.200m	150 Subdrain	200mm Ø	Mortar Knockout	45°
#3	99.840m	200 PVC Sdr 35	305mm Ø	S406-12A Kor-N-Seal Boot	103°
#4	100.200m	150 Subdrain	200mm Ø	Mortar Knockout	135°
#5	100.200m	150 Subdrain	200mm Ø	Mortar Knockout	225°
#6	100.200m	150 Subdrain	200mm Ø	Mortar Knockout	315°

**Elevation (View A-A)**



**Plan View**



**BOM For Stack**

ID	Description	Qty.	Weight
	1200 mm MANHOLE GASKET	1	
PC-2	1200 mm RG 0.311 m MH CAP	1	725
PC-1	1200 mm RG 1.372 m MH BASE	1	2,403
<b>Totals (pieces, kgs.)</b>		<b>2</b>	<b>3,128</b>



**Structure:** SAMH 01  
**Job Number:** 10994366  
**Job Name:** Enterprise Rent a Car  
**Job Location:** 225 Huntmar Drive

**Specification:** 1200 Monobase, 686 Top, Prebenched  
**Contractor:** Pro-X

**Take Off By:** 2/10/2020 wardowskic

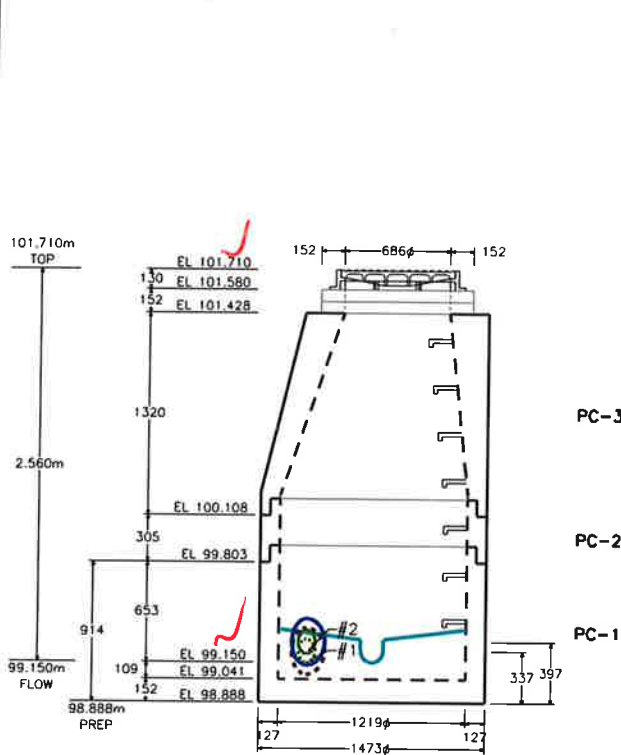
**Based on:**

<b>Design Build Height</b> Top of Casting + 101.710 Outlet Invert - 99.150m <b>Design Height = 2.560m</b>		<b>Stack Build Height</b> Frame + 0.130m Adjustment + 0.152m Eccentric Cone + 1.320m Risers + 0.305m Base Gain + 0.653m <b>Design Height = 2.560m</b> Floor Thickness + 0.262m <b>Outside Height = 2.822m</b>		<b>Manufacture Date:</b> <b>Ship Date:</b> <b>Frame:</b> S24/S25 <b>Grate/Cover:</b> <b>Channel:</b> Full Height Benching <b>Notes:</b>
--	--	---	--	--

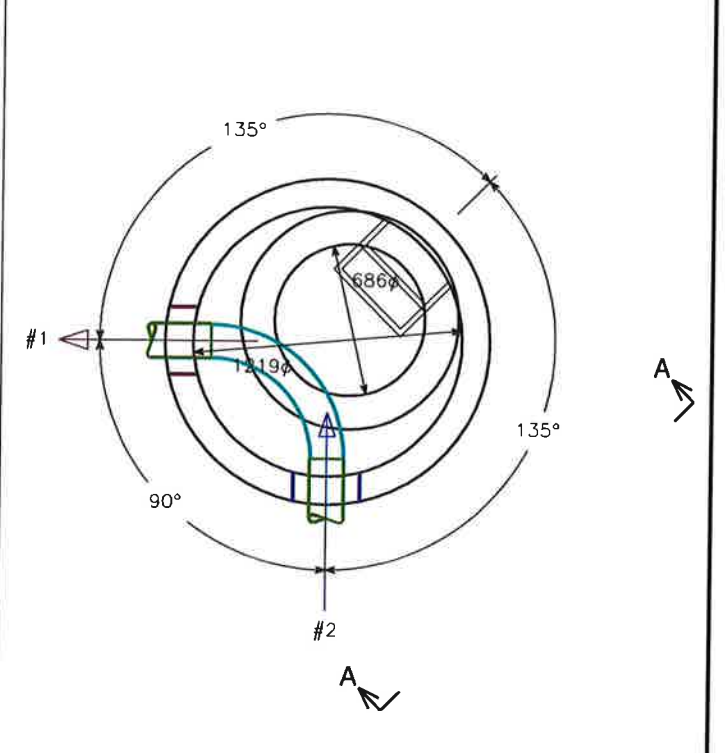
**Openings**

ID	Invert	Pipe Size	Hole Size	Connector	Angle
#1	99.150m	150 PVC Sdr 35	305mm Ø	S406-12C Kor-N-Seal Boot	0°
#2	99.210m	150 PVC Sdr 35	305mm Ø	S406-12C Kor-N-Seal Boot	270°

**Elevation (View A-A)**



**Plan View**



**BOM For Stack**

ID	Description	Qty.	Weight
	1200 mm MANHOLE GASKET	2	
PC-3	1200 MH CONE 1.320 m	1	1,930
PC-2	1200 mm RG 0.305 m MH RISER	1	393
PC-1	1200 mm RG 0.762 m MH BASE	1	2,480
<b>Totals (pieces, kgs.)</b>		<b>3</b>	<b>4,803</b>



**Structure:** SAMH 02  
**Job Number:** 10994366  
**Job Name:** Enterprise Rent a Car  
**Job Location:** 225 Huntmar Drive

**Specification:** 1200 Monobase, 686 Top, Prebenched ✓

**Contractor:** Pro-X

**Based on:**

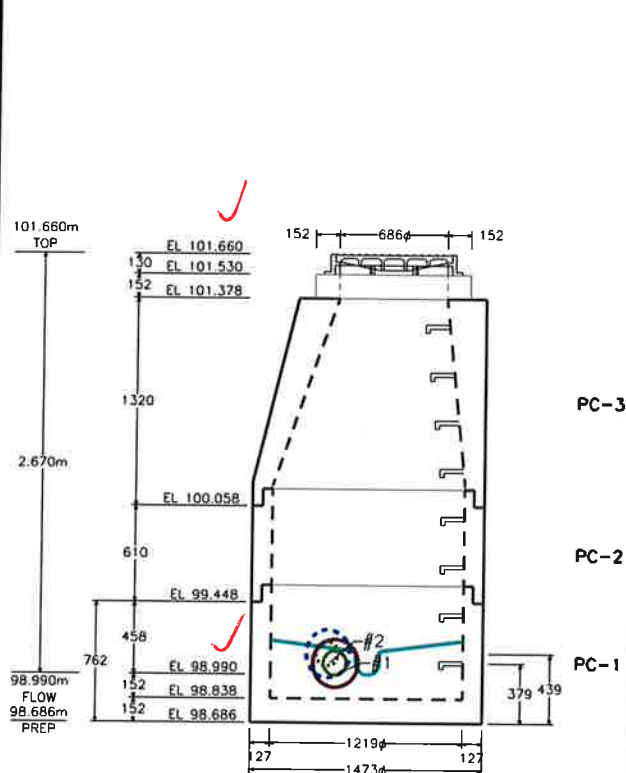
**Take Off By:** 2/10/2020 wardowskic

Design Build Height		Stack Build Height		Manufacture Date:	
Top of Casting	+ 101.660	Frame	+ 0.130m		
Outlet Invert	- 98.990m	Adjustment	+ 0.152m	<b>Ship Date:</b>	
<b>Design Height</b>	<b>= 2.670m</b>	Eccentric Cone	+ 1.320m	<b>Frame:</b> S24/S25 ✓	
		Risers	+ 0.610m	<b>Grate/Cover:</b>	
		Base Gain	+ 0.458m	<b>Channel:</b> Full Height Benching	
		<b>Design Height</b>	<b>= 2.670m</b>	<b>Notes:</b>	
		Floor Thickness	+ 0.304m		
		<b>Outside Height</b>	<b>= 2.974m</b>		

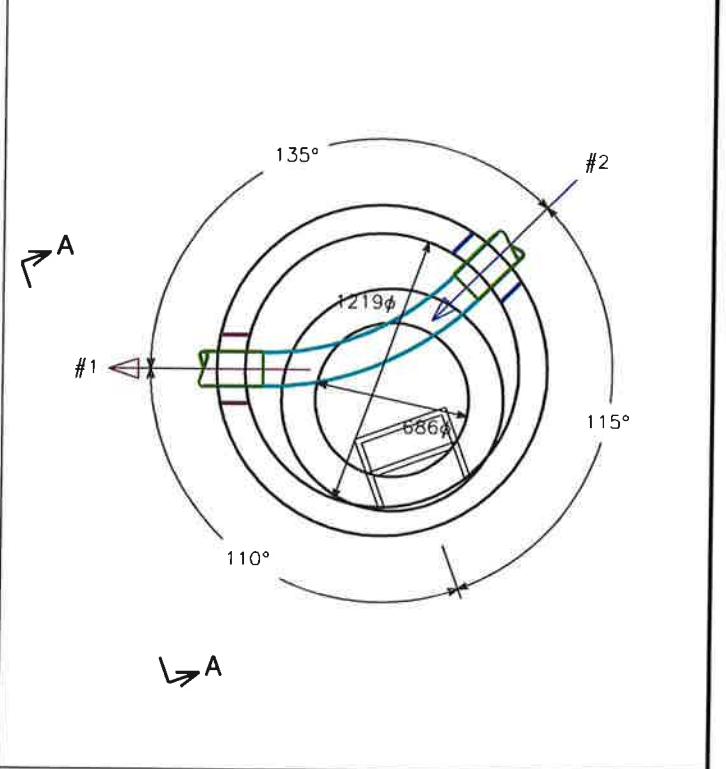
**Openings**

ID	Invert	Pipe Size	Hole Size	Connector	Angle
#1	98.990m	150 PVC Sdr 35	305mm Ø	S406-12C Kor-N-Seal Boot	0°
#2	99.050m	150 PVC Sdr 35	305mm Ø	S406-12C Kor-N-Seal Boot	135°

**Elevation (View A-A)**



**Plan View**



BOM For Stack		
ID	Description	Qty. Weight
	1200 mm MANHOLE GASKET	2
PC-3	1200 MH CONE 1.320 m	1 1,930
PC-2	1200 mm RG 0.610 m MH RISER	1 786
PC-1	1200 mm RG 0.610 m MH BASE	1 2,402
<b>Totals (pieces, kgs.)</b>		<b>3 5,118</b>



**Structure:** STMH 01  
**Job Number:** 10994366  
**Job Name:** Enterprise Rent a Car  
**Job Location:** 225 Huntmar Drive

**Specification:** 1200 Monobase, 686 Top, 300 Sump ✓

**Contractor:** Pro-X

**Based on:**

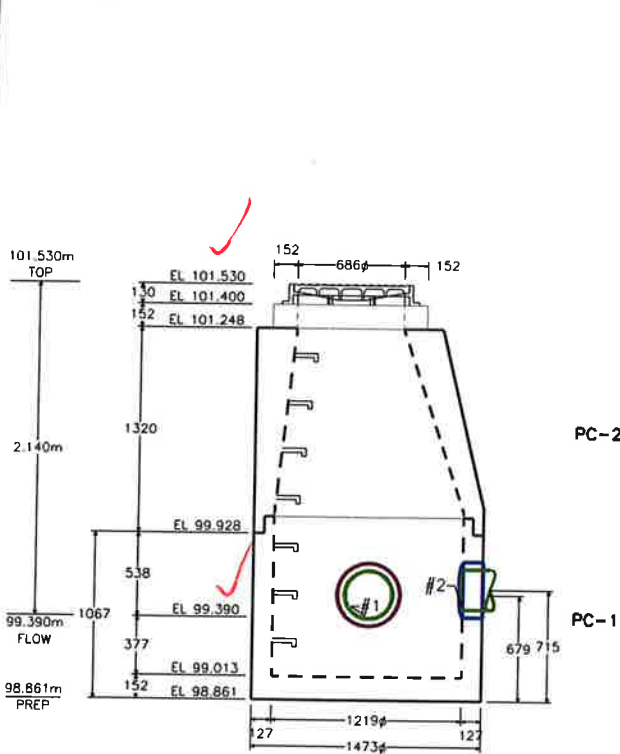
**Take Off By:** 2/10/2020 wardowskic

Design Build Height		Stack Build Height		Manufacture Date:
Top of Casting	+ 101.530	Frame	+ 0.130m	
Outlet Invert	- 99.390m	Adjustment	+ 0.152m	<b>Ship Date:</b>
Sump	+ 0.300m	Eccentric Cone	+ 1.320m	<b>Frame:</b> S24.1/S25 OTTAWA STORM "FISH LOGO" ✓
<b>Design Height</b>	<b>= 2.440m</b>	Base Gain	+ 0.838m	<b>Grate/Cover:</b>
		<b>Design Height</b>	<b>= 2.440m</b>	<b>Channel:</b> No Benching
		To Floor	+ 0.077m	<b>Notes:</b>
		Floor Thickness	+ 0.152m	
		<b>Outside Height</b>	<b>= 2.669m</b>	

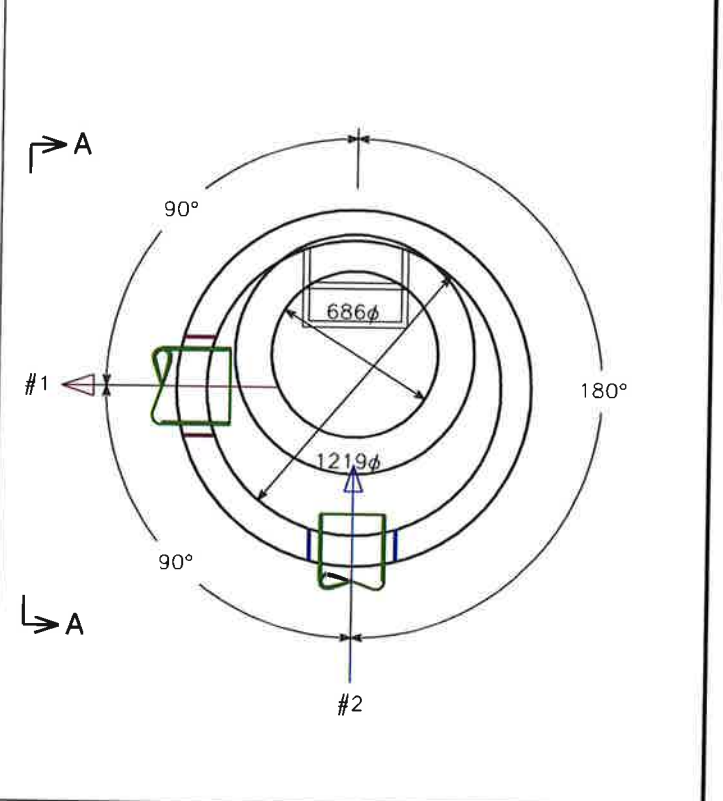
**Openings**

ID	Invert	Pipe Size	Hole Size	Connector	Angle
#1	99.390m	300 PVC Sdr 35	406mm Ø	S106-16A Kor-N-Seal Boot	0°
#2	99.450m	250 PVC Sdr 35	356mm Ø	S106-14A Kor-N-Seal Boot	270°

**Elevation (View A-A)**



**Plan View**



**BOM For Stack**

ID	Description	Qty.	Weight
	1200 mm MANHOLE GASKET	1	
PC-2	1200 MH CONE 1.320 m	1	1,930
PC-1	1200 mm RG 0.914 m MH BASE	1	1,796
<b>Totals (pieces, kgs.)</b>		<b>2</b>	<b>3,726</b>



Structure: **STMH 02**

Job Number: 10994366

Job Name: Enterprise Rent a Car

Job Location: 225 Huntmar Drive

Specification: 1200 Monobase, 686 Top, 300 Sump ✓

Contractor: Pro-X

Based on:

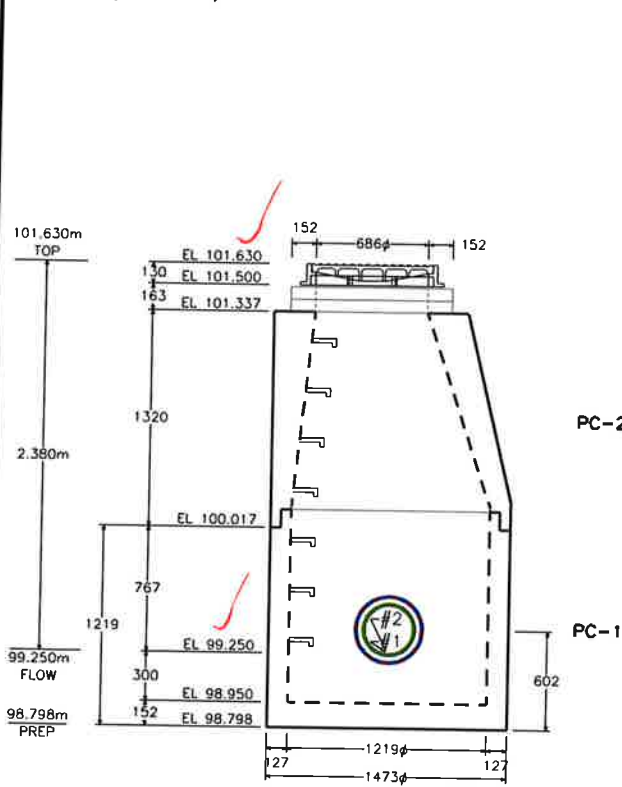
Take Off By: 2/10/2020 wardowskic

Design Build Height		Stack Build Height		Manufacture Date:
Top of Casting	+ 101.630	Frame	+ 0.130m	
Outlet Invert	- 99.250m	Adjustment	+ 0.163m	Ship Date:
Sump	+ 0.300m	Eccentric Cone	+ 1.320m	Frame: S24.1/S25 OTTAWA STORM "FISH LOGO" ✓
<b>Design Height</b>	<b>= 2.680m</b>	Base Gain	+ 1.067m	Grate/Cover:
		<b>Design Height</b>	<b>= 2.680m</b>	Channel: No Benching
		Floor Thickness	+ 0.152m	Notes:
		<b>Outside Height</b>	<b>= 2.832m</b>	

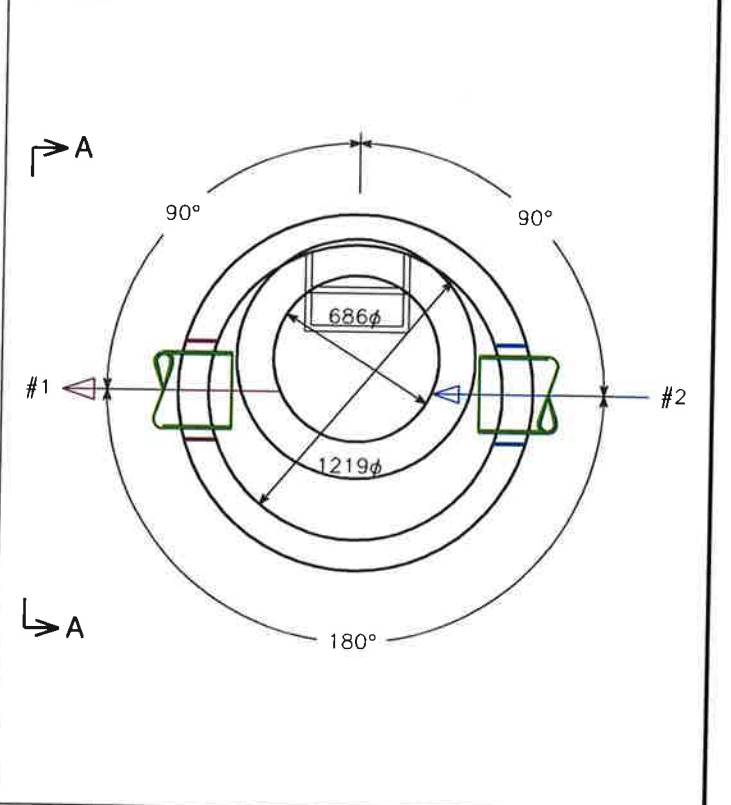
Openings

ID	Invert	Pipe Size	Hole Size	Connector	Angle
#1	99.250m	300 PVC Sdr 35	406mm Ø	S106-16A Kor-N-Seal Boot	0°
#2	99.250m	300 PVC Sdr 35	406mm Ø	S106-16A Kor-N-Seal Boot	180°

Elevation (View A-A)



Plan View



BOM For Stack

ID	Description	Qty.	Weight
	1200 mm MANHOLE GASKET	1	
PC-2	1200 MH CONE 1.320 m	1	1,930
PC-1	1200 mm RG 1.067 m MH BASE	1	1,983
<b>Totals (pieces, kgs.)</b>		<b>2</b>	<b>3,913</b>