

RECEIVED

By Jason C. Flynn Architect Inc. at 8:51 am, Feb 13, 2020

REVIEWED

By Pat Newton at 2:50 pm, Feb 12, 2020

Project: 225 Huntmar - Enterprise
Client: Corcann Heating and Cool. Inc.

DRAWING FOR APPROVAL

Date: February 11th, 2020

Revision Number: 01

Quote # 4101650-3

Prepared By: Pierre Laframboise

Telephone: (613) 829-2816

Email: plaframboise@master.ca

Project 4012522

For Approval

As-Built

Revision

REVIEWED
NOT REVIEWED
REVIEWED AS NOTED JV
REVISE/RESUBMIT
DATE: **February 13, 2020**

THIS IS A REVIEW ONLY OF CONFORMANCE WITH THE GENERAL DESIGN CONCEPT AND NOT A CHECK ON QUANTITIES, DETAILS OR DIMENSIONS WHICH ARE THE CONTRACTORS SOLE RESPONSIBILITY IN ORDER TO MEET ALL REQUIREMENTS OF THE CONTRACT DOCUMENTS.



Note: The rooftop unit are to be coordinated with the roof truss supplier. Roof trusses to be designed to support the weight of the rooftop unit and snow drifting as shown on the structural drawings.

PERFORMANCE & DRAWINGS



Date

02/11/2020

Project Name

225 Huntmar

Project Number

4012522

Client / Purchaser



Submittal Summary Page

Qty	Tag #	Model #	Description
1		ZE048H12D5C1AAA1A2	4 Ton, York Small Sunline Single Packaged R-410A Air Conditioner, Single Stage Cooling, 12.0 EER / 14.0 SEER, Single Stage Gas Aluminum Steel, 125 MBH Input, 575-3-60 <ul style="list-style-type: none"> • Dry Bulb Economizer and Hood (No Barometric Relief Damper) with Economizer Fault Detection & Diagnostic (Meets ASHRAE 90.1-2013, IECC 2015, California Title 24, AMCA 511) • 1.5 HP High Static Belt Drive Blower • 1" Throwaway Filters • Microchannel All Aluminum Condenser Coil, Copper tube/Aluminum fin Evaporator Coil • Galvanized Steel Drain Pan • Standard Access Doors
1		1RD0410	Barometric Relief Damper with Hood Kit (Downflow Unit or Duct Mounted)

Equipment start-up and commissioning by a factory trained technician is recommended. Contact your supplying distributor or sales representative for additional information & guidance.



WARNING: Cancer and Reproductive Harm - www.P65Warnings.ca.gov

York Single Package R-410A Air Conditioner

Project Name: 225 Huntmar

Unit Model #: ZE048H12D5C1AAA1A2

Quantity: 1

System: ZE048H12D5C1AAA1A2

Cooling Performance

Total gross capacity	51.9 MBH
Sensible gross capacity	42.6 MBH
Total net capacity	47.2 MBH
Sensible net capacity	37.9 MBH
Seasonal Efficiency (at ARI)	14.00 SEER
Efficiency (at ARI)	12.00 EER
Ambient DB temp.	95.0 °F
Entering DB temp.	80.0 °F
Entering WB temp.	67.0 °F
Leaving DB temp.	60.3 °F
Leaving WB temp.	58.9 °F
Power input (w/o blower)	3.54 kW
Sound power	80 dB(A)

Refrigerant

Refrigerant type	R-410A
Sys1	5 lbs 6 oz

Gas Heating Performance

Entering DB temp.	60 °F
Heating output capacity (Max)	100 MBH
Supply air	2000 CFM
Heating input capacity (Max)	125 MBH
Leaving DB temp.	106.3 °F
Air temp. rise	46.3 °F
SSE	80.6 %
Stages	1

Supply Air Blower Performance

Supply air	2000 CFM
Ext. static pressure	1.3 IWG
Addl. Unit Losses (Options/Accessories)	0.13 IWG
Blower speed	1413 RPM
Max BHP of Motor (including service factor)	1.73 HP
Duct location	Bottom
Motor rating	1.50 HP
Actual required BHP	1.49 HP
Power input	1.39 kW
Elevation	0 ft.
Drive type	BELT

Outside/Mixed Air

Outside Air Cfm	200 CFM
-----------------	---------

Electrical Data

Power supply	575-3-60
Unit min circuit ampacity	8.9 Amps
Unit max over-current protection	15 Amps

Dimensions & Weight

Hgt	33 in.	Len	83 in.	Wth	45 in.
Weight with factory installed options	728 lbs.				

Clearances

Right	24 in.	Front	32 in.	Rear	12 in.
Top	72 in.	Bottom	0 in.	Left	24 in.

Note: Please refer to the tech guide for listed maximum static pressures



4 Ton

- York Units are Manufactured at an ISO 9001 Registered Facility and Each Rooftop is Completely Computer-Run Tested Prior to Shipment.

Unit Features

- Single Stage Gas Aluminum Steel
- Single Stage Cooling
- 125 MBH Input
- Unit Cabinet Constructed of Powder Painted Steel, Certified At 750 Hours Salt Spray Test (ASTM B-117 Standards)
- Either Supply and/or Return can be Field Converted from Vertical to Horizontal Configuration without Cutting Panels.
- Full Perimeter Base Rails with Built in Rigging Capabilities
- Scroll Compressor
- Dry Bulb Economizer and Hood (No Barometric Relief Damper) with Economizer Fault Detection & Diagnostic (Meets ASHRAE 90.1-2013, IECC 2015, California Title 24, AMCA 511)
- 1.5 HP High Static Belt Drive Blower
- Solid Core Liquid Line Filter Driers
- Unit Ships with 1" Throwaway Filters
- Replacement Filters: 2 - (15" x 20" x 1" or 2") and 1 - (14" x 25" x 1" or 2"). Unit accepts 1" or 2" wide filters.
- Single Point Power Connection
- Through-the-Curb and Through-The-Base Utility Connections
- Short Circuit Current: 5kA RMS Symmetrical
- Microchannel All Aluminum Condenser Coil, Copper tube/Aluminum fin Evaporator Coil
- Galvanized Steel Drain Pan
- Standard Access Doors

Standard Unit Controller: Smart Equipment Control Board

- An Integrated Low-Ambient Control, Anti-Short Cycle Protection, Lead-Lag, Fan On and Fan off Delays, Low Voltage Protection, On-Board Diagnostic and Fault Code Display. Allows all units to operate in the cooling mode down to 0 °F outdoor ambient without additional components or intervention.
- Safety Monitoring - Monitors the High and Low-Pressure Switches, the Freezestats, the Gas Valve, if Applicable, and the Temperature Limit Switch on Gas and Electric Heat Units. The Unit Control Board will Alarm on Ignition Failures, Safety Lockouts and Repeated Limit Switch Trips.

Warranty

- One (1) Year Limited Warranty on the Complete Unit
- Five (5) Year Warranty - Compressors and Electric Heater Elements
- Ten (10) Year Warranty - Aluminized Heat Exchanger



Small Sunline 3-6 Ton Package

York Single Package R-410A Air Conditioner

Project Name: 225 Huntmar

Unit Model #: ZE048H12D5C1AAA1A2

Quantity: 1

System: ZE048H12D5C1AAA1A2

Factory Installed Options

ZE048H12D5C1AAA1A2

Equipment Options	Option(s) Selected	
Product Category:	ZE	York Small Sunline Single Packaged R-410A Air Conditioner 12.0 EER / 14.0 SEER
Nominal Cooling Capacity:	048	4 Ton Single Stage Cooling
Heat Type and Nominal Heat Capacity:	H12	Single Stage Gas Aluminum Steel 125 MBH Input
Blower Option:	D	1.5 HP High Static Belt Drive Blower
Voltage:	5	575-3-60
Outside Air Option:	C	Dry Bulb Economizer and Hood (No Barometric Relief Damper) with Economizer Fault Detection & Diagnostic (Meets ASHRAE 90.1-2013, IECC 2015, California Title 24, AMCA 511)
Service Options:	1	
Sensor Options:	A	
Refrigeration:	A	Microchannel All Aluminum Condenser Coil, Copper tube/Aluminum fin Evaporator Coil
Additional Options:	1	1" Throwaway Filters
Cabinet Options:	A	Galvanized Steel Drain Pan Standard Access Doors

Field Installed Accessories

- 1RD0410 - Barometric Relief Damper with Hood Kit (Downflow Unit or Duct Mounted) (6.0 lbs)

Project Name: 225 Huntmar

Unit Model #: ZE048H12D5C1AAA1A2

Quantity: 1

System: ZE048H12D5C1AAA1A2

Consolidated Drawing
NOTES:

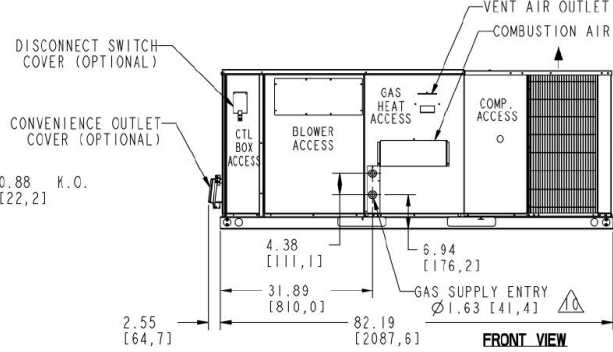
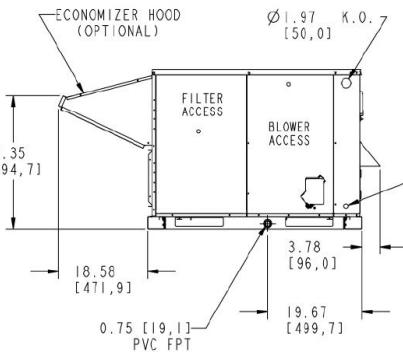
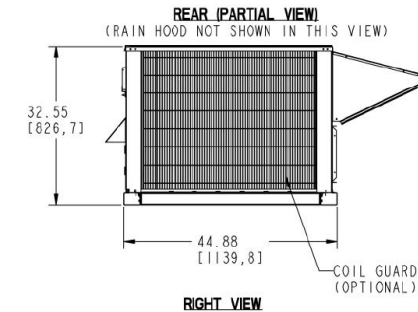
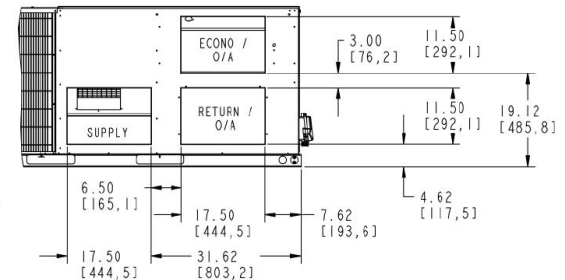
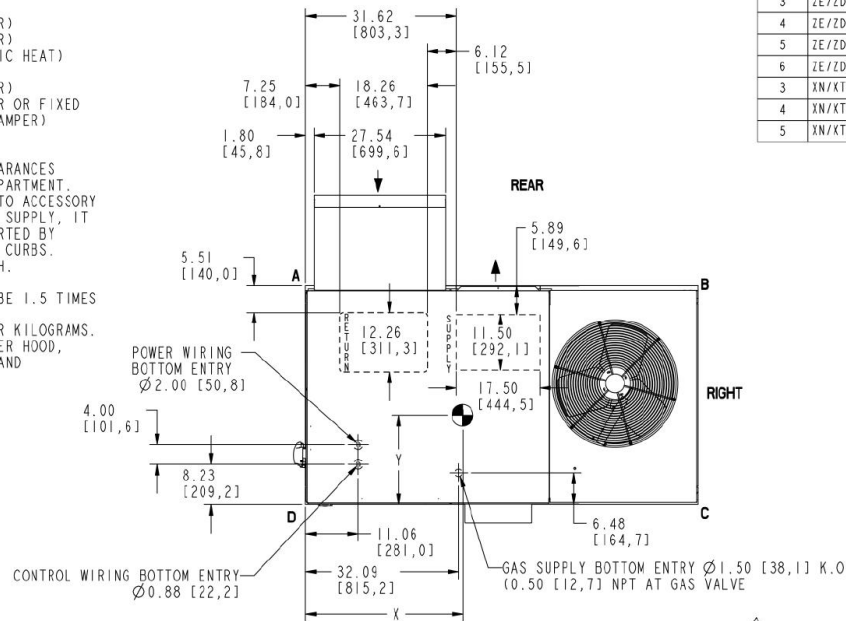
- FOR OUTDOOR USE ONLY.
- WEIGHTS SHOWN ARE FOR COOLING ONLY UNITS.
- MIN. CLEARANCES TO BE:
 - RIGHT SIDE: 24 [609,6]
 - LEFT SIDE: 24 [609,6] (LESS ECONOMIZER)
 - 36 [914,4] (WITH ECONOMIZER)
 - FRONT: 24 [609,6] (COOLING/ELECTRIC HEAT)
 - 32 [812,8] (GAS HEAT)
 - REAR: 12 [304,8] (LESS ECONOMIZER)
 - 36 [914,4] (WITH ECONOMIZER OR FIXED AIR/MOTORIZED DAMPER)
 - TOP: 72 [1828,8]
 - BOTTOM: 0 [0]
- FOR SMALLER SERVICE AND OPERATIONAL CLEARANCES CONTACT YOUR APPLICATION ENGINEERING DEPARTMENT.
- DOWNFLOW DUCTS DESIGNED TO BE ATTACHED TO ACCESSORY ROOF CURB ONLY. IF UNIT IS MOUNTED SIDE SUPPLY, IT IS RECOMMENDED THAT THE DUCTS ARE SUPPORTED BY CROSS BRACES, AS DONE ON ACCESSORY ROOF CURBS.
- SIDE DUCT FLANGES ARE 0.875" [22,2] HIGH. BOTTOM DUCTS DO NOT HAVE FLANGES.
- MINIMUM CONDENSATION TRAP HEIGHT SHALL BE 1.5 TIMES THE LOWEST NEGATIVE STATIC.
- DIMENSIONS IN [] ARE IN MILLIMETERS OR KILOGRAMS.
- OPTIONAL COIL GUARD, GAS HEAT, ECONOMIZER HOOD, DISCONNECT SWITCH, CONVENIENCE OUTLET, AND OUTLET/INLET HOOD SHOWN.

EXCEPT XN/XT (HEAT PUMP) UNITS.

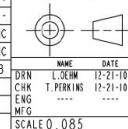
DIRECTION OF AIRFLOW

CENTER OF GRAVITY

TONNAGE	UNIT	OPERATING WEIGHT (LBS) (BASE UNIT)	CENTER OF GRAVITY LOCATION (BASE UNIT)		4 POINT CORNER LOADS (LBS) (BASE UNIT)			
			X	Y	A	B	C	D
3	ZE/ZD	470 [213]	34.5 [876,3]	18.25 [463,8]	111 [50]	80 [36]	117 [53]	162 [73]
4	ZE/ZD	598 [271]	36 [914,4]	18.50 [469,3]	139 [63]	108 [49]	154 [70]	198 [90]
5	ZE/ZD	632 [287]	37.5 [952,5]	18.2 [462,3]	139 [63]	117 [53]	171 [78]	204 [93]
6	ZE/ZD	695 [302]	35.5 [901,7]	17.75 [450,8]	150 [68]	114 [52]	173 [78]	228 [103]
3	XN/XT	610 [277]	38.3 [972,8]	18.75 [476,3]	136 [62]	119 [54]	165 [75]	190 [86]
4	XN/XT	616 [279]	38.2 [970,3]	18.4 [467,4]	135 [61]	117 [53]	169 [77]	195 [88]
5	XN/XT	620 [281]	38.6 [980,4]	18 [457,2]	132 [60]	117 [53]	174 [79]	197 [89]


LEFT VIEW
REVISION RECORD

REV	DATE	REVISION RECORD	EC NO	DR	CK	ENG
A	12-21-10	NEW DRAWING	---	LO	RDH	---
B	09-08-11	CHANGED OPERATING & CORNER WEIGHTS FOR 3, 4 & 5T (GEN 2)	19126	LO	RCF	KMC
C	11-25-14	ADDED ZE/ZD & XN/XT MODELS	20683	LO	RDH	KMC
D	07-30-18	ADDED ZE/ZD 6 TON MODEL & REMOVED OBSOLETE DATA	60489	SMD	LOP	CB

THIRD ANGLE PROJECTION


ALL PROPRIETARY RIGHTS IN THE SUBJECT MATTER HEREOF ARE RESERVED AND NO PERMISSION IS GRANTED TO REPRODUCE THIS PRINT IN WHOLE OR IN PART OR DISCLOSE ANY OF THE INFORMATION HEREON TO OTHERS WITHOUT WRITTEN RELEASE BY JOHNSON CONTROLS

DRAWING PER ASME Y14.5-2009

TOLERANCES UNLESS OTHERWISE SPECIFIED:

ONE PLACE DECIMAL = ± .1

TWO PLACE DECIMAL = ± .02

THREE PLACE DECIMAL = ± .010

ANGLES = ± 2°

DIMENSIONS ARE IN INCHES

SCALE 0.085

SUBMITTAL DWG, SM SUNLINE, 3-6 TONS

JOHNSON CONTROLS
UNITARY PRODUCTS GROUP
NORMAN, OK 73069

SAFETY AND KEY CHARACTERISTICS PER BE 239-STD-01

TYPE NOT APPLICABLE

ENG SPEC NOT APPLICABLE

SIZE

DWG NO. UST-SSL-10DF32H

PART NO.

SHT NO. 1 OF 1

Project Name: 225 Huntmar

Unit Model #: ZE048H12D5C1AAA1A2

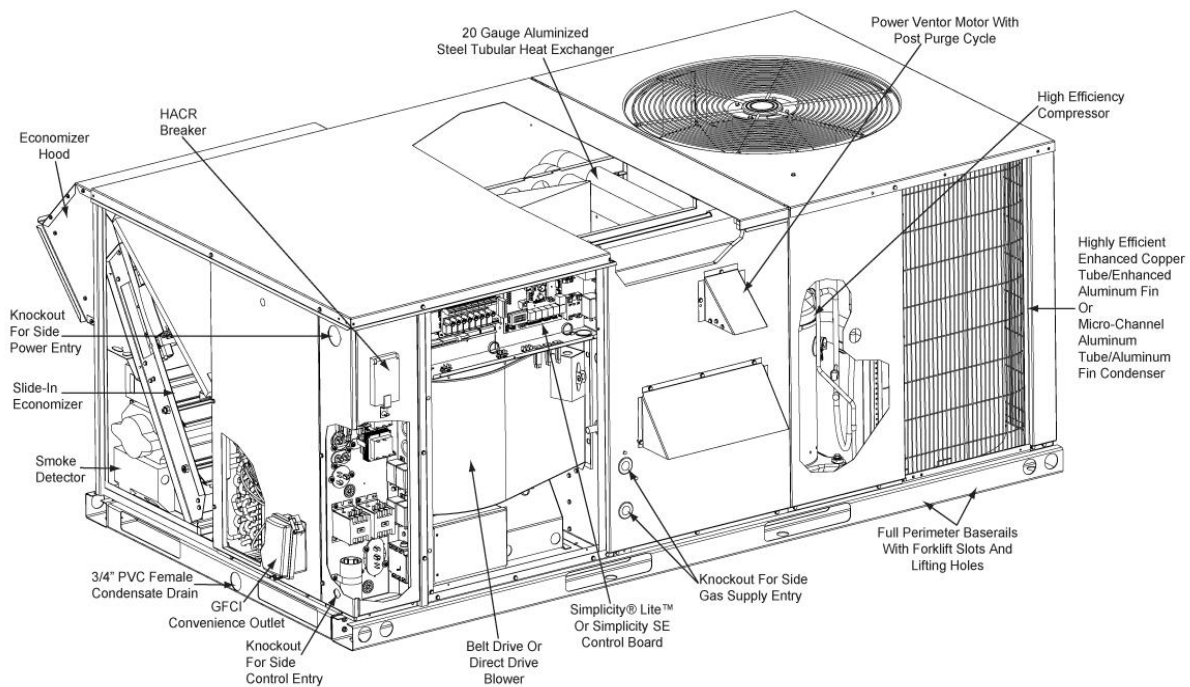
Quantity: 1

System: ZE048H12D5C1AAA1A2

Component Location

Component Location

Gas/Electric



York Single Package R-410A Air Conditioner

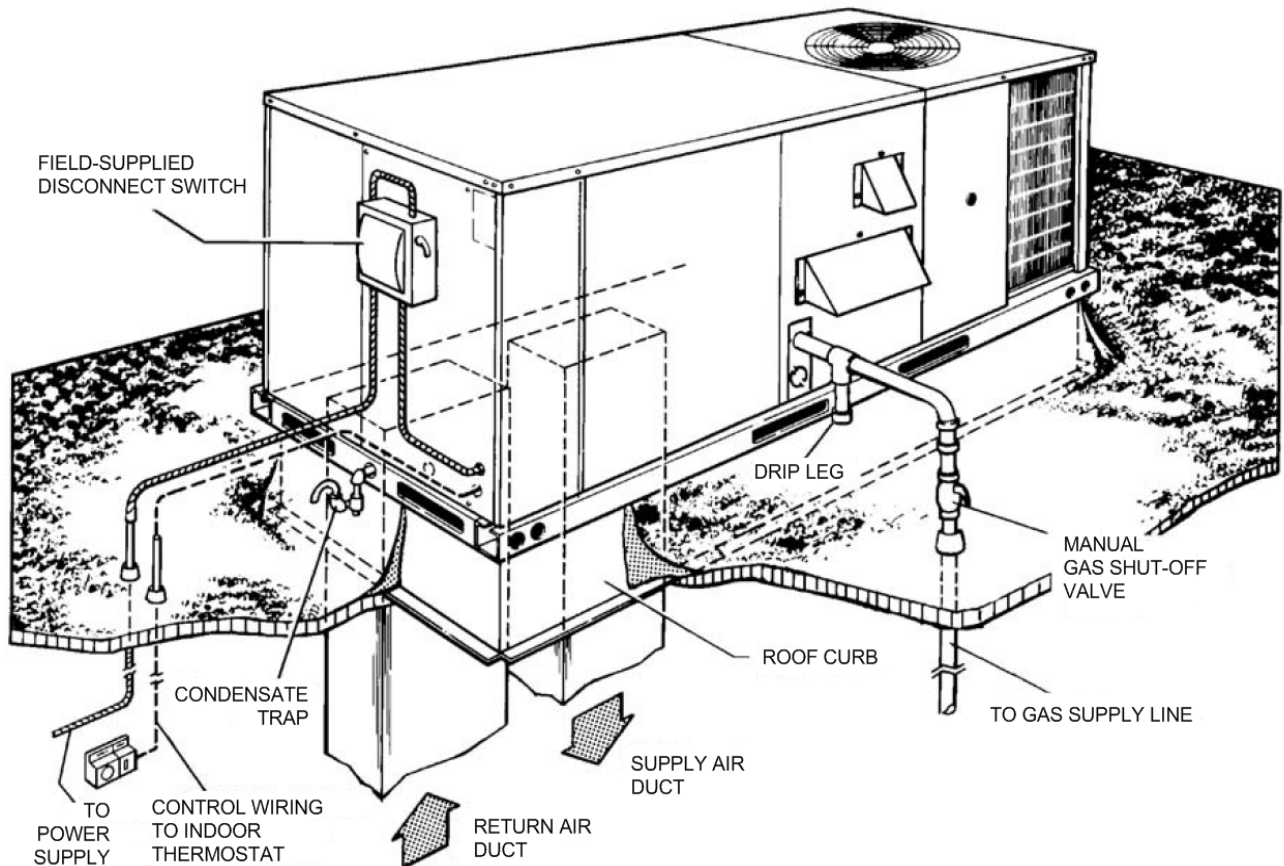
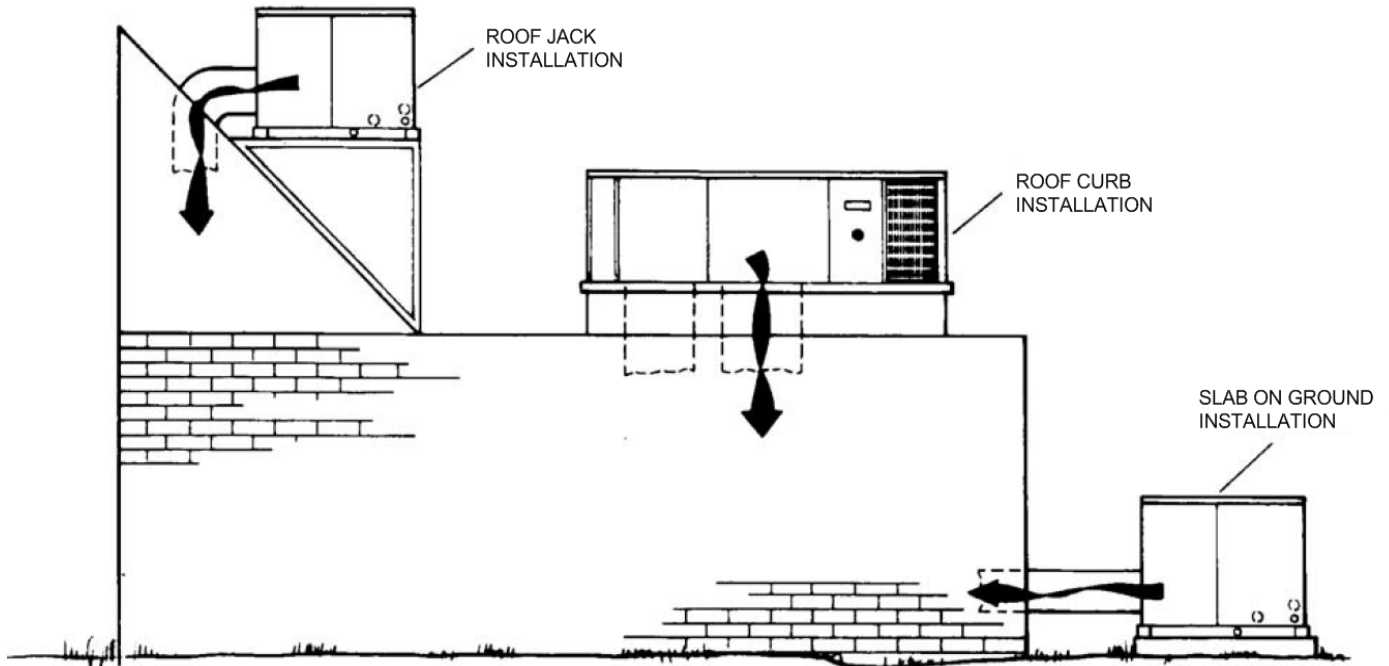
Project Name: 225 Huntmar

Unit Model #: ZE048H12D5C1AAA1A2

Quantity: 1

System: ZE048H12D5C1AAA1A2

Typical Application



Project Name: 225 Huntmar

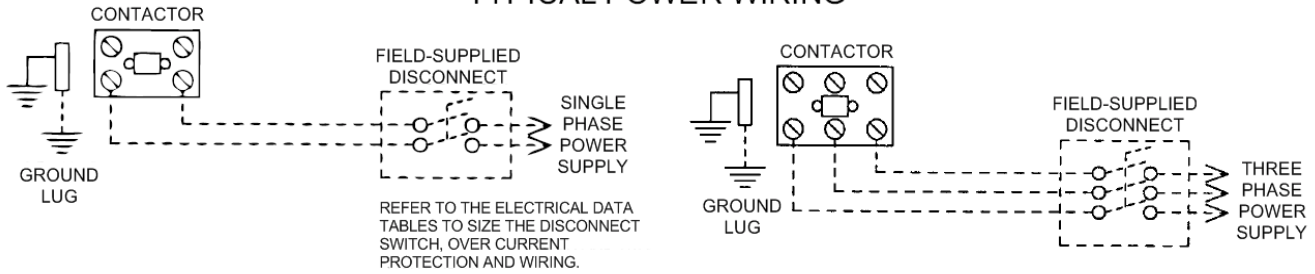
Unit Model #: ZE048H12D5C1AAA1A2

Quantity: 1

System: ZE048H12D5C1AAA1A2

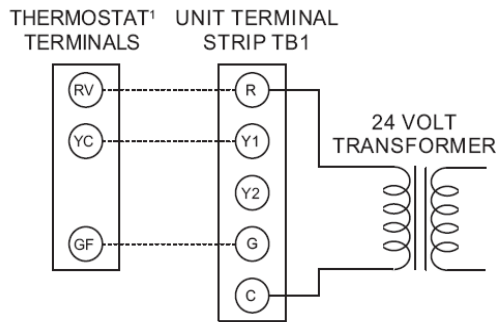
Typical Field Power and Control Wiring

TYPICAL POWER WIRING



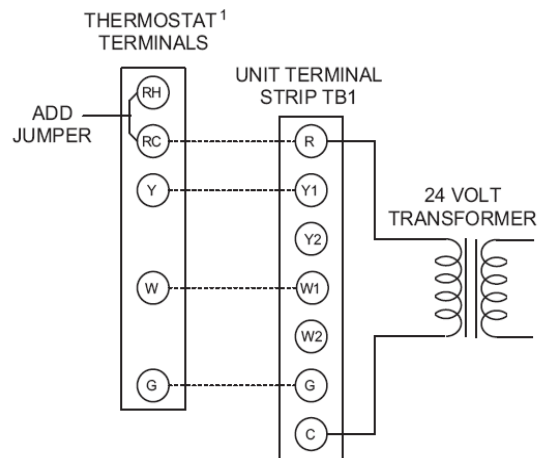
TYPICAL COOL/HEAT CONTROL WIRING

COOLING ONLY (24 VOLT THERMOSTAT)

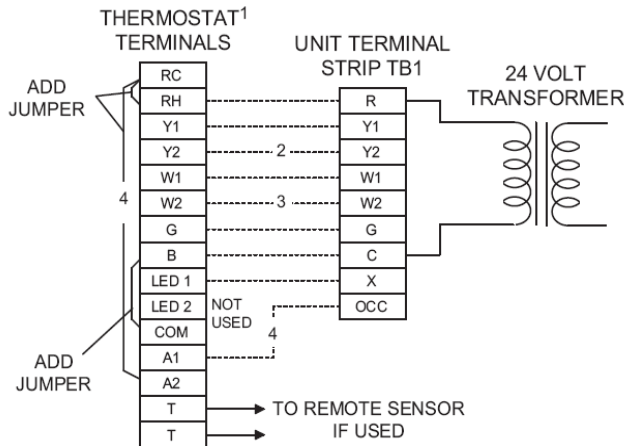


¹24 VOLT THERMOSTAT. TO CONTROL THE ECONOMIZER ON SECOND STAGE COOLING, USE A 2 STAGE COOLING THERMOSTAT.

COOLING / HEATING (24 VOLT THERMOSTAT)

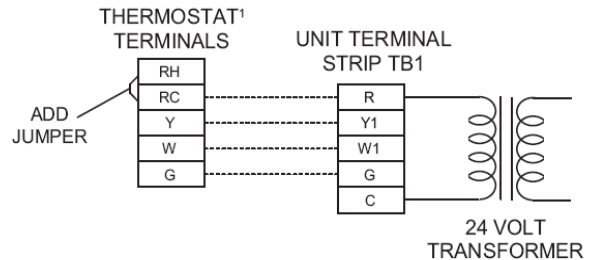


COOLING / HEATING (ELECTRONIC THERMOSTAT) MULTI STAGE



¹24 VOLT THERMOSTAT. TO CONTROL THE ECONOMIZER ON THE SECOND STAGE COOLING OR TO HAVE AN ELECTRIC HEAT ACCESSORY WITH TWO STAGES OF HEAT, USE A 2 STAGE COOL AND HEAT THERMOSTAT.

COOLING / HEATING (ELECTRONIC THERMOSTAT) SINGLE STAGE



- ¹ ELECTRONIC PROGRAMMABLE THERMOSTAT TYPICAL.
- ² SECOND STAGE COOLING IS NOT REQUIRED ON UNITS LESS ECONOMIZER.
- ³ SECOND STAGE HEATING IS ONLY REQUIRED ON UNITS WITH A TWO STAGE ELECTRIC HEATER OR 2 STAGE GAS HEAT.
- ⁴ REMOVE JUMPER J2 FROM TERMINALS 4 AND 9 ON JUMPER PLUG CONNECTOR P6 ON UNITS WITH ECONOMIZER. TERMINALS A1 AND A2 PROVIDE A RELAY OUT-PUT TO CLOSE THE OUTDOOR ECONOMIZER DAMPERS WHEN THE THERMOSTAT SWITCHES TO THE SET-BACK POSITION.

¹ELECTRONIC PROGRAMMABLE THERMOSTAT TYPICAL. TO CONTROL THE ECONOMIZER ON SECOND STAGE COOLING, USE A 2 STAGE COOL AND HEAT THERMOSTAT.



LES ATELIERS FABTECH INC.

Tél : 450-967-9880, Fax : 514-858-0624

No. Production : _____

Client : _____

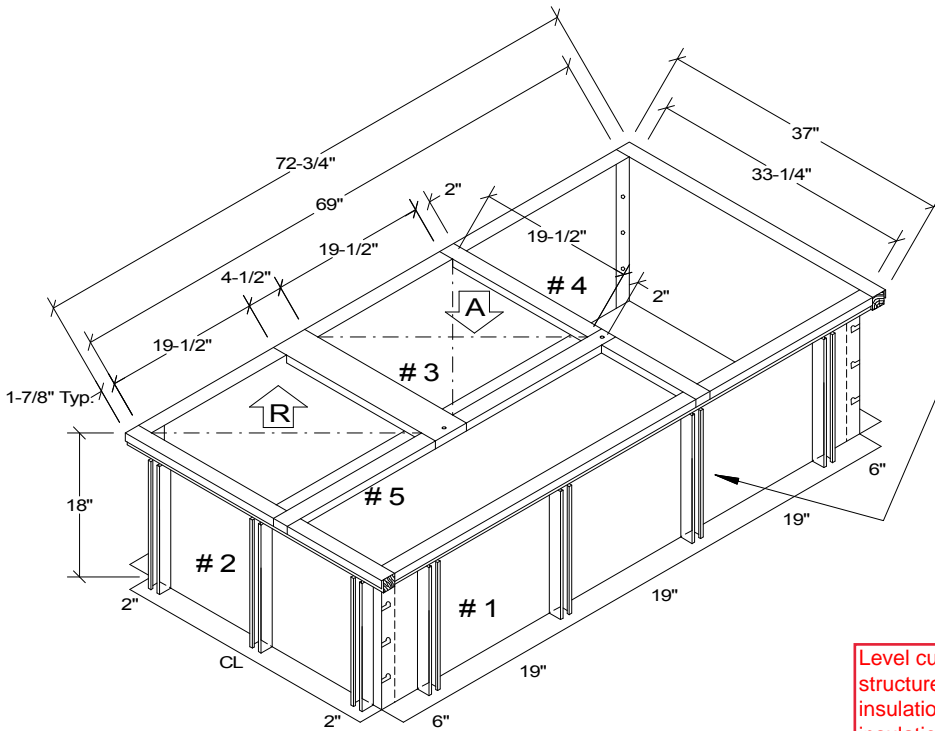
Date requis : _____

Projet : _____

Date reçu : _____

Feuille ___ de ___

QUALITÉ
&
SERVICE



Unistrut P-100, 1-5/8" x 1-5/8"
Tack-welded 1" aux 2" c/c
et stagger

Level curb to suite sloped
structure and tapered
insulation. C/W tapered
insulation cricket on high
side.

Coordinate rough openings
with truss supplier.

Inclus dans le sac
8- Vis teck # 10 X 3/4"
1- Boulon 1/4" X 1/2"
25'-0"- Gasket 1 1/2" X 1/2"

IRCO-427-18 Para-seismic

Le contenu du présent document ou tout autre document
l'accompagnant est strictement la propriété des Ateliers Fabtech Inc.,
toute utilisation et toute reproduction en tout ou en partie sont
formellement interdites sous toutes peines que de droit.

QTÉ :

MAT :

ISOL :