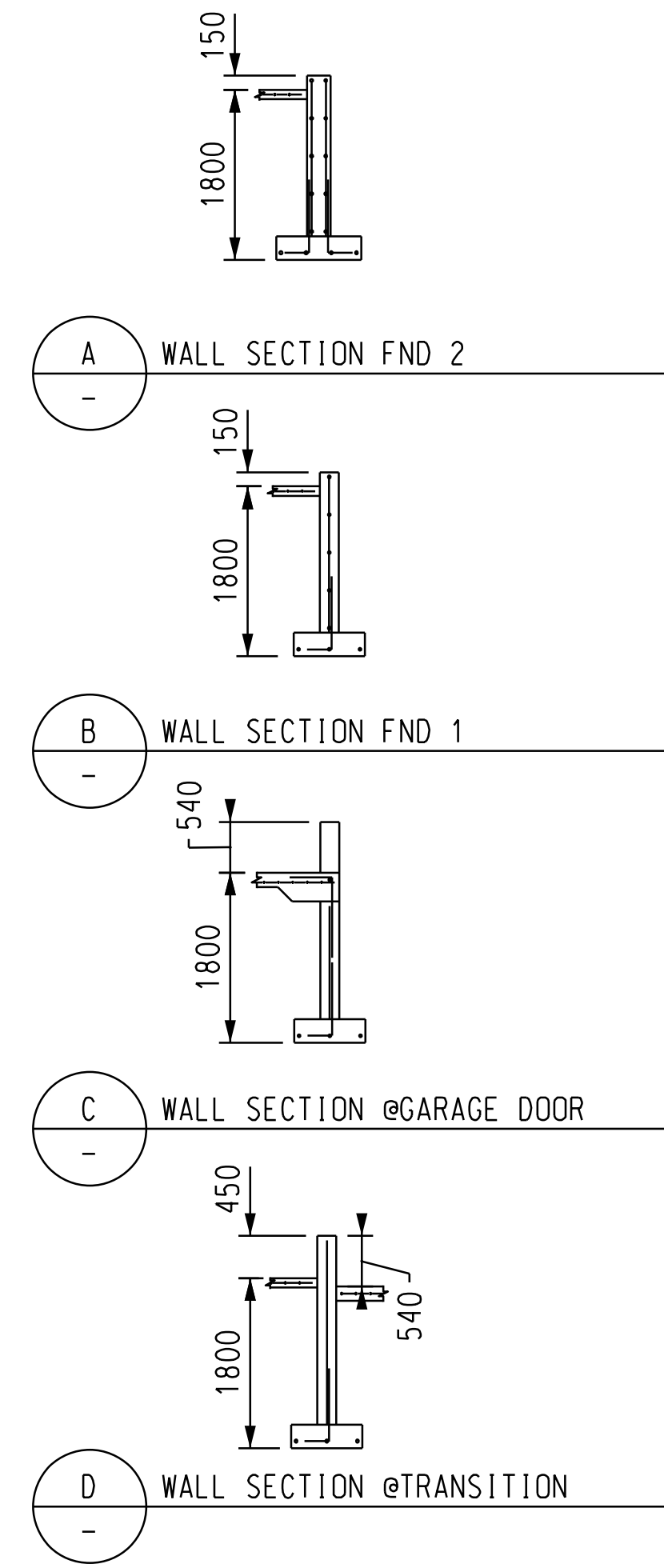
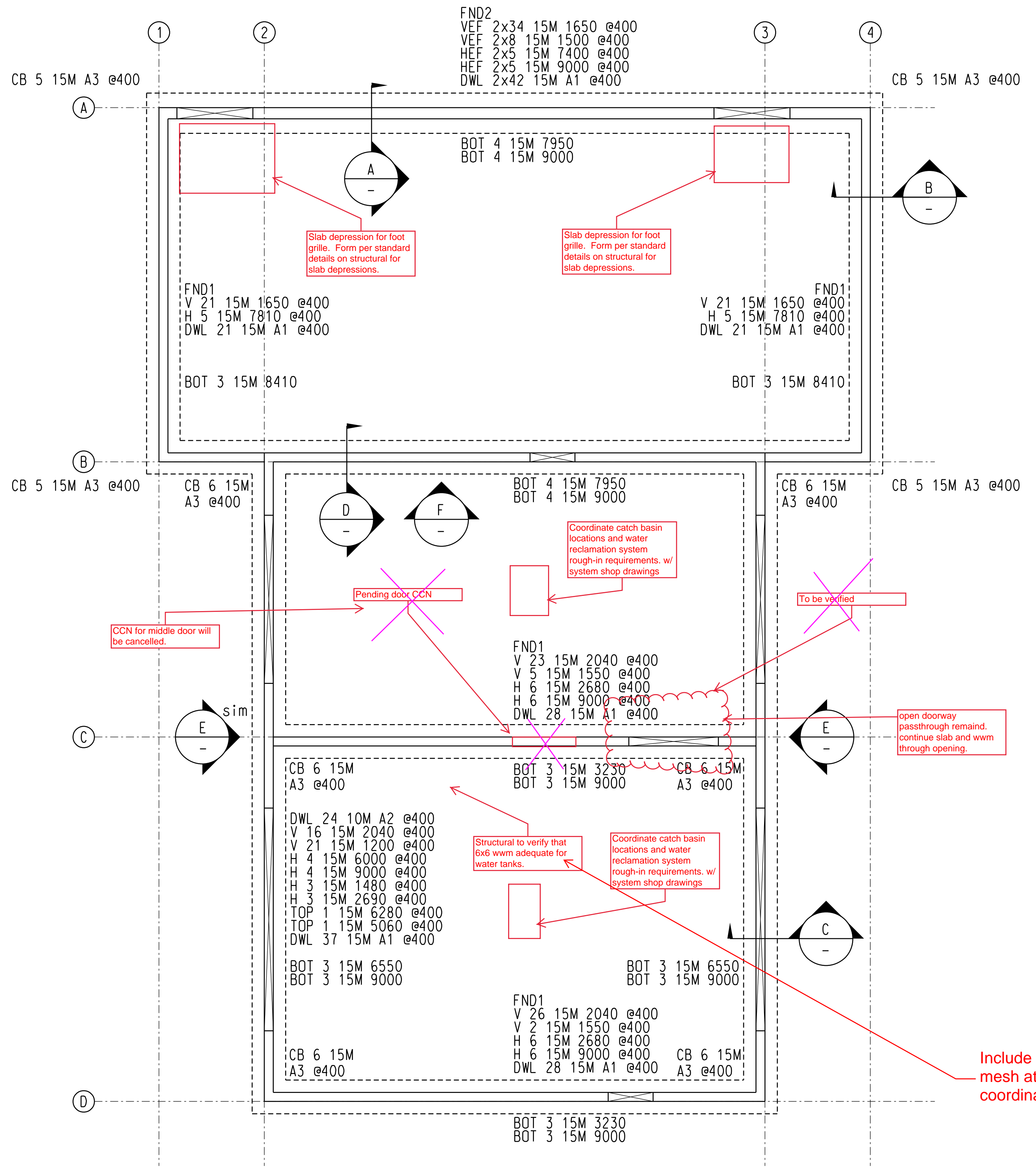


QTY	SIZE	EP	BAR MARK	BND TYP	CD	A	B	C	D	E	BENDING DIMENSIONS							
						F/R	G	H	J	K	L	M	N	O	P			
298	15M		A1	2		260	775											
56	15M		A3	2		600	600											
48	10M		A2	2		450	850											



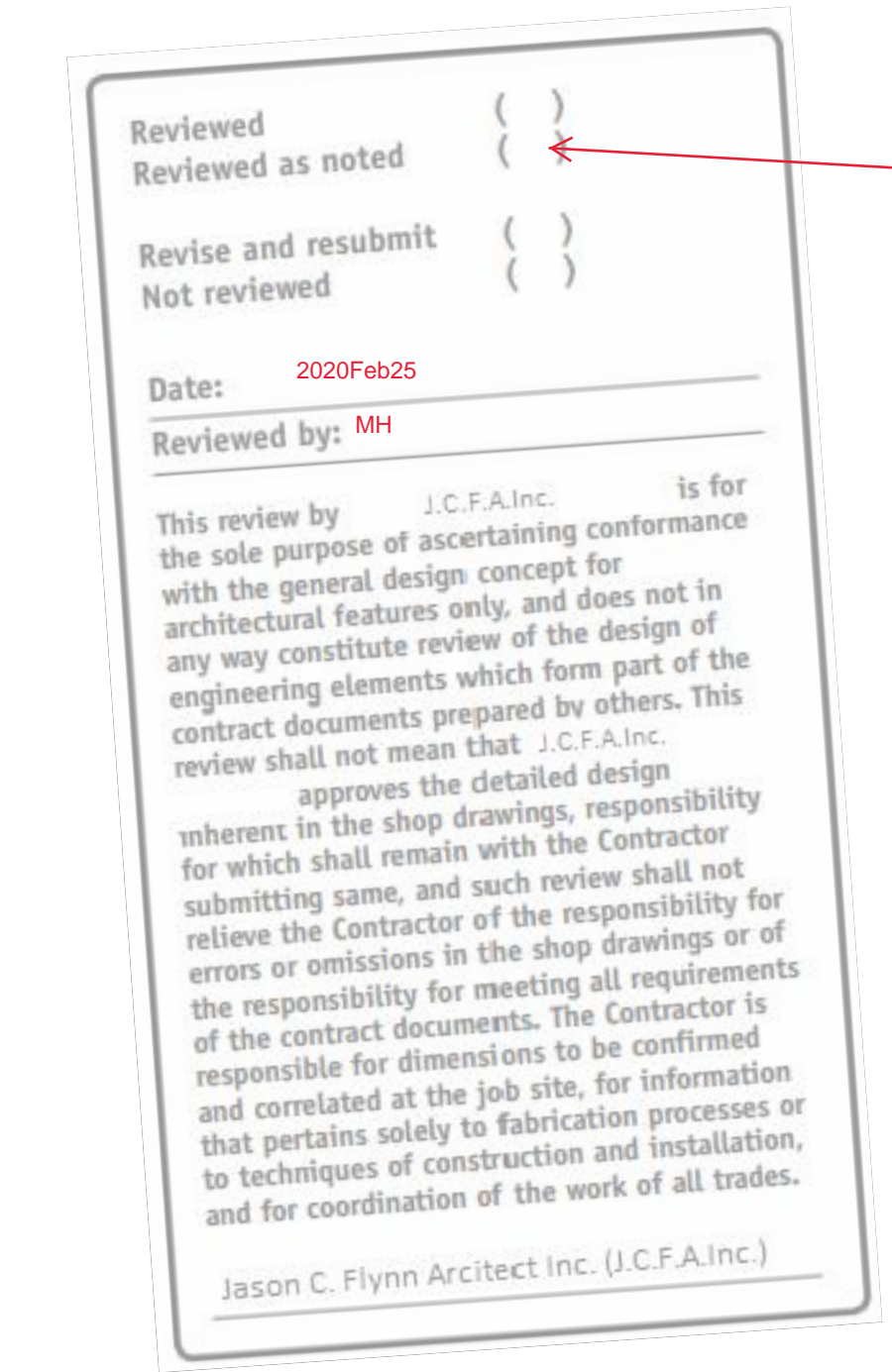
20 Sheets
152*152*18.7*18.7(6X6 6/6)
(8X20) SHEETS
SLAB ON GRADE MESH

Other rebar if not by this sub-contractor.
GC, to coordinate pylon sign foundation with sign supplier's drawings.
Reinforced concrete which may appear on electrical.
-duct bank, lateral to utility pole if used, pylon sign, and light standard bases.

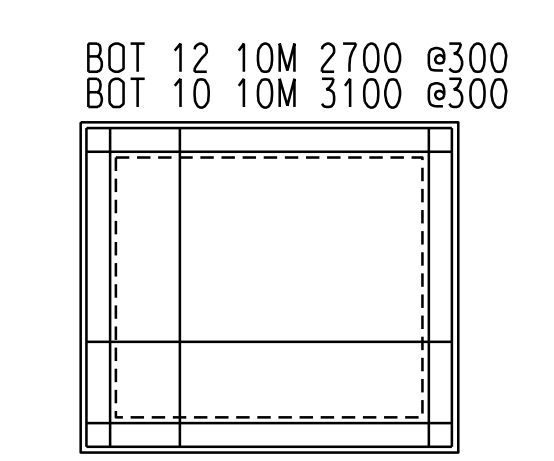
REVIEWED
NOT REVIEWED
REVIEWED AS NOTED JV
REVISE/RESUBMIT

DATE: February 27, 2020

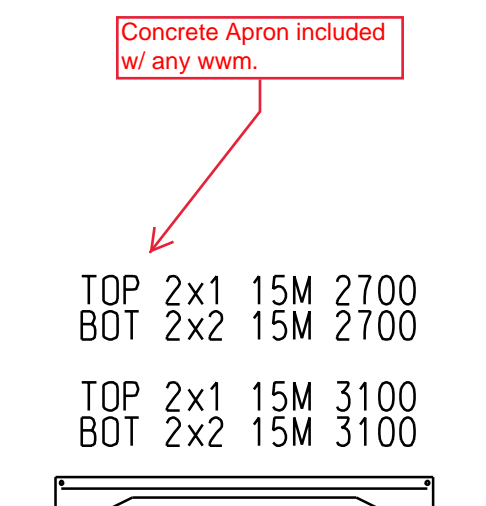
THIS IS A REVIEW ONLY OF CONFORMANCE WITH THE GENERAL DESIGN CONCEPT AND NOT A CHECK ON QUANTITIES, DETAILS OR DIMENSIONS WHICH ARE THE CONTRACTORS SOLE RESPONSIBILITY IN ORDER TO MEET ALL REQUIREMENTS OF THE CONTRACT DOCUMENTS.



FOUNDATION PLAN

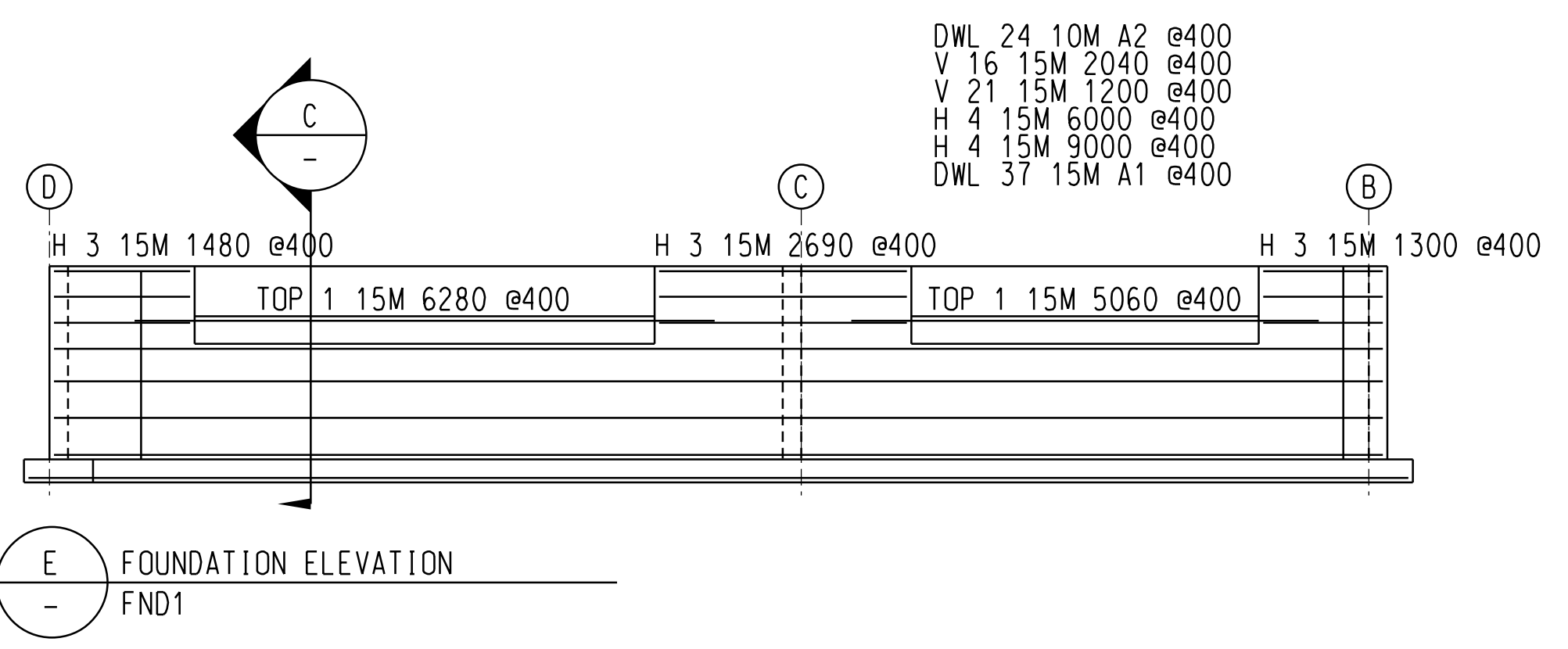


GARBAGE PAD PLAN

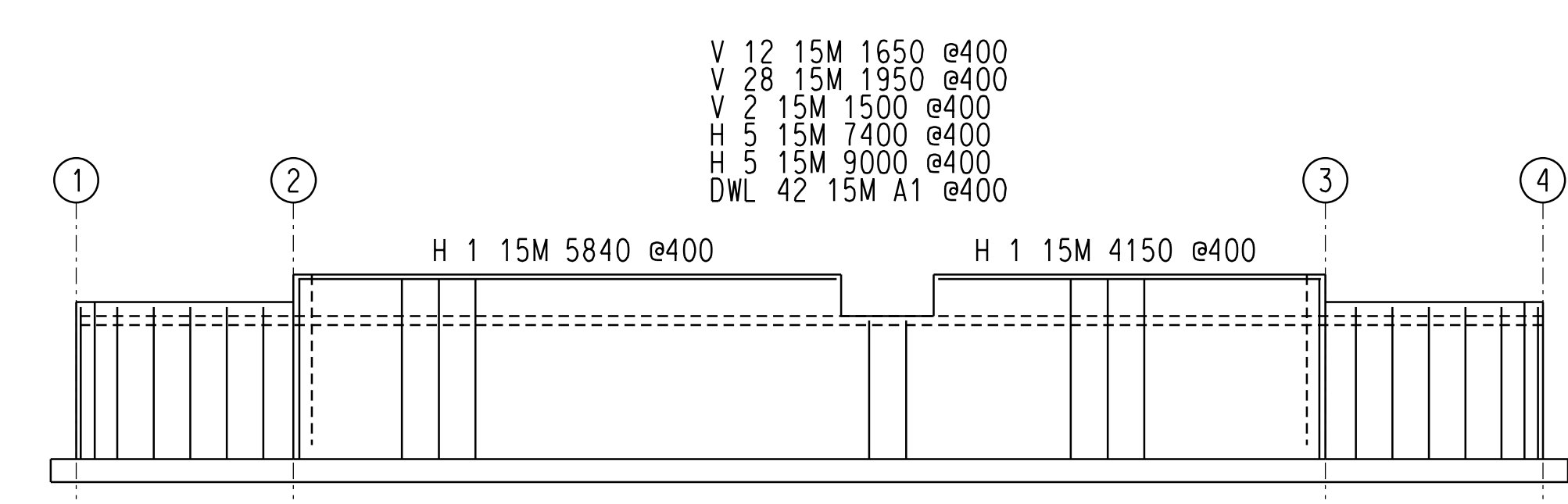


GARBAGE PAD SECTION

Include 10M at 300 each way at mid-height + wire mesh at tank location. 20'x10' area. Contractor to coordinate location.



FOUNDATION ELEVATION FND1



FOUNDATION ELEVATION FND1

REVIEWED
By Pat Newton at 11:15 am, Feb 25, 2020

DETAILING NOTES		LEGEND		REVISIONS	
400W BLACK	ADDITIONAL	-	-	-	-
600MM MIN LAP	B BOTTOM	-	-	-	-
	BB BOND BEAM	-	-	-	-
	BF BACK FACE	-	-	24-FEB-20	MC
	CB CORNER BAR	-	-	REVISIONS	DATE
	D&G DRILL & GROUT	-	-	BY	
	DWL DOWELS	-	-	Enterprise Rent a Car - Kanata 225 Huntmar Dr.	
	EE EACH END	-	-	CONTRACTOR	
	EF EACH FACE	-	-	MANOTICK CONCRETE	
	EQ EQUALLY	-	-	FOUNDATION / EXTERIOR WORK	
	ES EACH SIDE	-	-	AGF STEEL - OTTAWA	
	EW EACH WAY	-	-	3419 Hawthorne Road Ottawa, Ontario K1G 4G2	
	FF FRONT FACE	-	-	DETAILER INFORMATION	
	GLV GALVANIZED	-	-	613-736-1500 Ext. 3139 megan.orlickshank@agfsteel.com	
	H HORIZONTAL	-	-	AGF	
	IF INSIDE FACE	-	-	MCCRICKS/HMK	
	LL LOWER LAYER	-	-	CONTRACT NUMBER	
	M MIDDLE	-	-	C9880F	
	MAS MASONRY	-	-	BASE	
	OF OUTSIDE FACE	-	-	NTS	
	SB SUPPORT BAR	-	-	P1	
	SGR STAGGERED	-	-		
	STN STAINLESS	-	-		
	T TOP	-	-		
	UL UPPER LAYER	-	-		
	V VERTICAL	-	-		