

1) GENERAL

- NOTES ON THIS SHEET ARE FOR REFERENCE ONLY AND ARE SUPPLEMENTED BY PROJECT SPECIFICATIONS.
- STRUCTURAL DRAWINGS ARE TO BE READ IN CONJUNCTION WITH ALL RELEVANT CONTRACT DOCUMENTS - INCLUDING ARCHITECTURAL, MECHANICAL, ELECTRICAL AND CIVIL DRAWINGS, GEOTECHNICAL REPORTS AND SPECIFICATIONS.
- ALL DIMENSIONS ARE IN MILLIMETERS AND ELEVATIONS IN METRES (UNLESS INDICATED OTHERWISE).
- DO NOT SCALE THESE DRAWINGS.
- ALL WORK MUST COMPLY WITH THE PROVISIONS OF THE ONTARIO BUILDING CODE (2012), OCCUPATIONAL HEALTH & SAFETY ACT, MUNICIPAL BYLAWS AND BEST CODE PRACTICES.
- DETAILS OF EXISTING CONDITIONS AND CONSTRUCTION ARE SHOWN BASED ON INFORMATION AVAILABLE AT THE TIME OF PREPARING DESIGN DRAWINGS. IF, DURING CONSTRUCTION, CONDITIONS ARE REVEALED THAT DIFFER FROM THE ASSUMED CONDITIONS, ADVISE THE ENGINEER BEFORE PROCEEDING.
- DO NOT CUT OPENINGS THROUGH STRUCTURAL ELEMENTS UNLESS APPROVED IN WRITING BY THE STRUCTURAL ENGINEER.
- SPECIFIC NOTES AND DETAILS ON THESE DRAWINGS SHALL TAKE PRECEDENCE OVER GENERAL NOTES AND TYPICAL DETAILS.

GENERAL DESIGN INFORMATION

THE INFORMATION PRESENTED ON THESE DRAWINGS HAS BEEN DESIGNED AND ANALYZED IN ACCORDANCE WITH THE 2012 ONTARIO BUILDING CODE. CONSTRUCTION IS TO BE PERFORMED IN ACCORDANCE WITH THIS AND ALL OTHER APPLICABLE CODES.

LIGHTWEIGHT STEEL STRUCTURE IS DESIGNED IN ACCORDANCE WITH CSA S136-07 & A151 S200 SERIES.

2. THE SUSPENDED CEILING HAS BEEN DESIGNED IN CONFORMANCE WITH THE ONTARIO BUILDING CODE SECTION 4.1.8.18 CATEGORY 7, ELEMENTS OF STRUCTURES AND NON STRUCTURAL COMPONENTS AND EQUIPMENT.

3. SEISMIC SYSTEM/LOADING DATA

2012 OBC CLAUSE 4.1.8.18 $V_p = 0.3F_oS_o(0.2)eSpWp$

SEISMIC IMPORTANCE FACTOR: (2012 OBC CLAUSE 4.1.8.5)

$I_e = 1.0$ NORMAL

REFERENCE CITY: OTTAWA, ONTARIO

SITE CLASS: THE NOTED SITE CLASSIFICATION FOR SEISMIC SITE RESPONSE BASED ON SOILS REPORT NO. TS-SO-022154 FROM DST DATED APRIL 27, 2016

□ A □ B □ C □ D □ E □ F

PGA: 0.32

RESPONSE SPECTRAL DATA:

5% DAMPED SPECTRAL RESPONSE ACCELERATION VALUES FOR REFERENCE CITY: (2012 OBC SUPPLEMENTARY STANDARD SB-1)

$S_o(0.2) = 0.620$

2012 OBC CLAUSE 4.1.8.18 CATEGORY 7

$S_p = C_p A_s / R_p$

$C_p = 1.0$

$A_s = 1.0$

$A_x = 1 + 2h_x / h_n = 2.5$

$R_p = 2.5$

$S_p = 1.0$

WEIGHT OF SUSPENDED CEILING: $W_p = 0.20$ kPa

WEIGHT OF WALL/BULKHEAD: $W_p = 0.30$ kPa

Is this applicable to the ceiling elements?
Structural comment required.

OK
JV

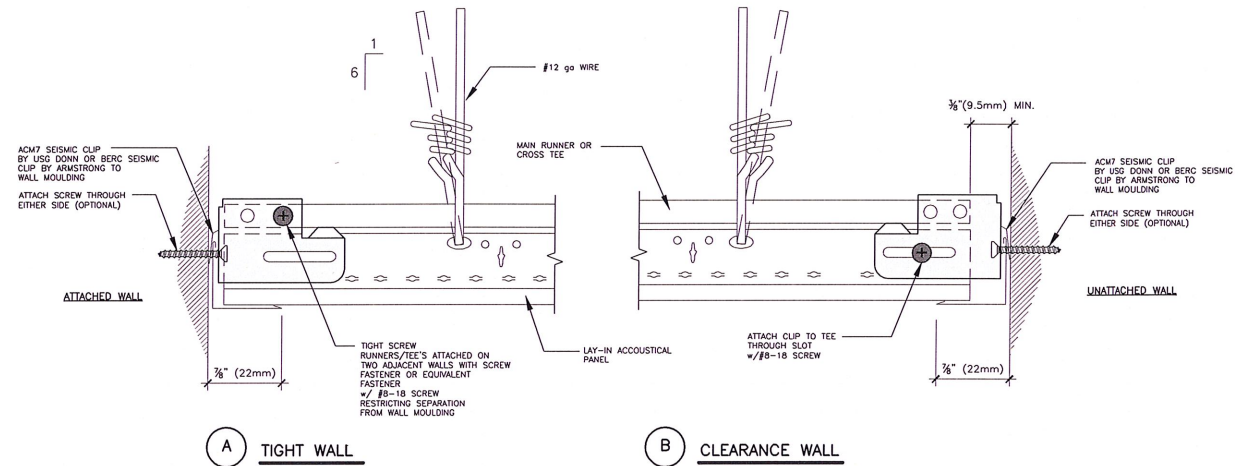
Reviewed ()
Reviewed as noted () ←
Revise and resubmit ()
Not reviewed ()

Date: 2020 March 19

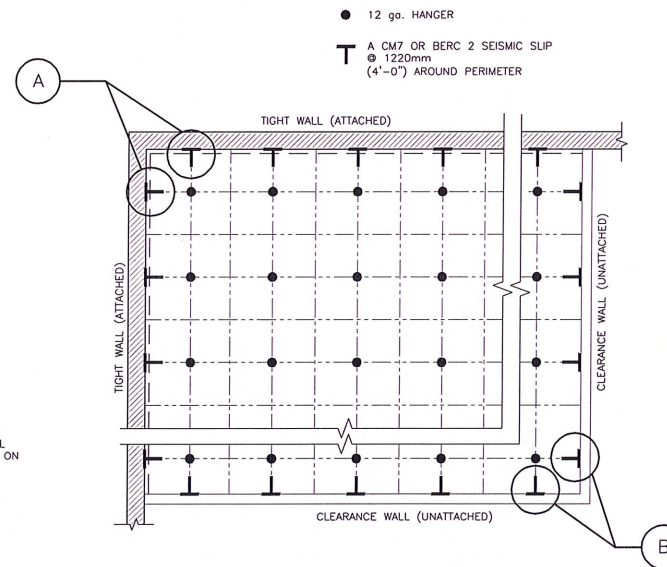
Reviewed by: MH

This review by J.C.F.A.Inc. is for the sole purpose of ascertaining conformance with the general design concept for architectural features only, and does not in any way constitute review of the design of engineering elements which form part of the contract documents prepared by others. This review shall not mean that J.C.F.A.Inc. approves the detailed design inherent in the shop drawings, responsibility for which shall remain with the Contractor submitting same, and such review shall not relieve the Contractor of the responsibility for errors or omissions in the shop drawings or of the responsibility for meeting all requirements of the contract documents. The Contractor is responsible for dimensions to be confirmed and correlated at the job site, for information that pertains solely to fabrication processes or to techniques of construction and installation, and for coordination of the work of all trades.

Jason C. Flynn Architect Inc. (J.C.F.A.Inc.)



A DETAIL: PERIMETER CLIPS ON T-BAR CEILINGS
SCALE: 1"=1'-0"



SEISMIC RESTRAINT PLAN
SCALE: N.T.S.

SEISMIC CEILING NOTES:

- CEILINGS WITH AN AREA OF 144ft² OR LESS, SURROUNDED BY WALLS THAT CONNECT DIRECTLY TO THE STRUCTURE ABOVE ARE EXEMPT FROM THESE REQUIREMENTS.
- CEILINGS WITH AN AREA OF 2500ft² OR MORE REQUIRE A SEISMIC SEPARATION JOINT OR FULL HEIGHT PARTITION THAT BREAKS THE CEILING UP INTO AREAS NOT EXCEEDING 2500ft².
- EACH 2500ft² AREA REQUIRES PERIMETER ANGLE AND HORIZONTAL RESTRAINTS.
- PROVIDE MINIMUM 6 INCHES OF CLEARANCE BETWEEN RESTRAINTS AND ANY UNRESTRAINED DUCT/PIPE IN THE CEILING SPACE.
- WIRES MUST BE CONNECTED TO THE STRUCTURE ABOVE.
- USE ACM7 OR BERC 2 SEISMIC CLIPS AROUND PERIMETER.
- No. 12 GAUGE PERIMETER SUPPORT WIRES TO BE INSTALLED WITHIN 8 INCHES FROM WALL MOULDING.

NOTES:
PIPES, CONDUITS, ETC. TO HAVE SEPARATE SUPPORT BY OTHERS. SECURE ALL HANGERS TO BUILDING STRUCTURE, TRAPEZE AROUND DUCTWORK AND OTHER LARGE OBSTRUCTIONS

REVIEWED
NOT REVIEWED
REVIEWED AS NOTED JV
REVISE/RESUBMIT
DATE: MARCH 19, 2020

THIS IS A REVIEW ONLY OF CONFORMANCE WITH THE GENERAL DESIGN CONCEPT AND NOT A CHECK ON QUANTITIES, DETAILS OR DIMENSIONS WHICH ARE THE CONTRACTORS SOLE RESPONSIBILITY IN ORDER TO MEET ALL REQUIREMENTS OF THE CONTRACT DOCUMENTS.

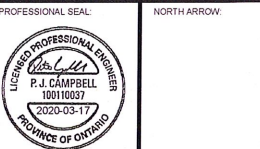


TALKING INNOVATIONS	
REVIEWED	(✓)
REVIEWED AS MODIFIED	()
REVISED/RESUBMIT	()
NOT REVIEWED	()
Pat Newton	
Date: 18-MAR-20	

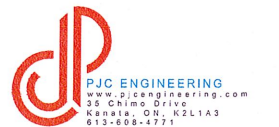
IT IS THE RESPONSIBILITY OF THE APPROPRIATE CONTRACTOR TO CHECK AND VERIFY ALL DIMENSIONS ON SITE AND TO REPORT ALL ERRORS AND/OR OMISSIONS TO THE ENGINEER.

ALL CONTRACTORS MUST COMPLY WITH ALL PERTINENT CODES AND BY-LAWS.
DO NOT SCALE DRAWINGS.
COPYRIGHT RESERVED.

1 2020-03-17 ISSUED FOR CONSTRUCTION



CLIENT:
SOUBLIERE INTERIORS LTD.



PROJECT TITLE:
ENTERPRISE KANATA
1
225 HUNTMAR DRIVE

SHEET TITLE:
TYPICAL SEISMIC
CEILING RESTRAINTS

DRAWN: PJC
CHECKED: PJC
SCALE: AS SHOWN
SHEET No: S100
PROJECT No: 20.012