

at 4:04 pm,

REVIEWED  
NOT REVIEWED  
REVIEWED AS NOTED JV  
REVISE/RESUBMIT  
DATE: APRIL 24, 2020

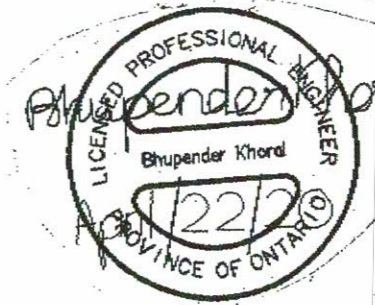
THIS IS A REVIEW ONLY OF CONFORMANCE WITH THE GENERAL DESIGN CONCEPT AND NOT A CHECK ON QUANTITIES, DETAILS OR DIMENSIONS WHICH ARE THE CONTRACTOR'S SOLE RESPONSIBILITY IN ORDER TO MEET ALL REQUIREMENTS OF THE CONTRACT DOCUMENTS.



Cont.	M-1
Dwg No	
Project	ENTERPRISE RENT-A-CAR
Title	ROOF LADDER
Drawn	DA
Chk	CD
Date	APRIL/20

CAGE ONLY REQUIRED FOR LADDERS 5m HIGH OR GREATER.

No Cage Required?  
No Cage quoted!



Reviewed as noted

Revise and resubmit Not reviewed

Date: 2020 Apr 24

Reviewed by: MH

This review by J.C.F.A. Inc. is for the sole purpose of ascertaining conformance with the general design concept for architectural features only, and does not in any way constitute review of the design of engineering elements which form part of the contract documents prepared by others. This review shall not mean that J.C.F.A. Inc. approves the detailed design inherent in the shop drawings, responsibility for which shall remain with the Contractor submitting same, and such review shall not relieve the Contractor of the responsibility for errors or omissions in the shop drawings or of the responsibility for meeting all requirements of the contract documents. The Contractor is responsible for dimensions to be confirmed and correlated at the job site, for information that pertains solely to fabrication processes or techniques of construction and installation, and for coordination of the work of all trades.

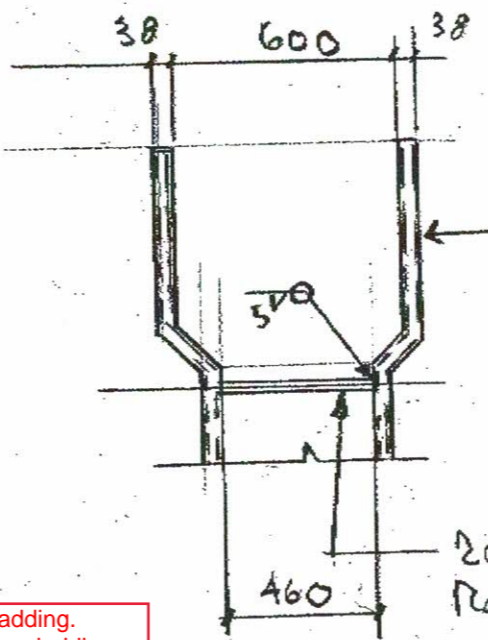
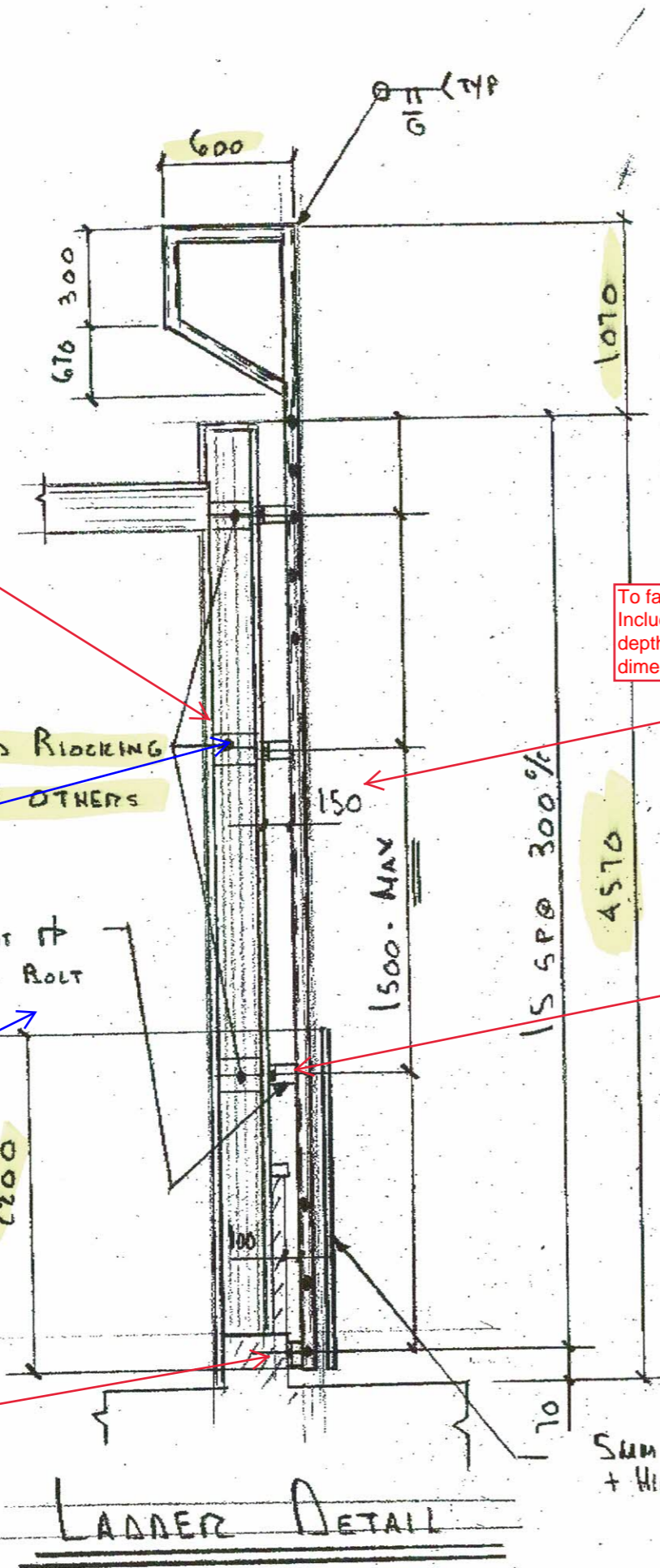
Jason C. Flynn, P.Eng. (J.C.F.A. Inc.)

ALL MATERIAL IS TO MEET CSA-G40.21-300W  
ALL HSS MATERIAL IS TO MEET CSA-G40.21-350W  
ALL CONNECTION MATERIAL IS TO BE 300W  
ALL STEEL FABRICATION AND WELDING IS TO BE PER CSA W59 & W47.1 SPECIFICATIONS

Design Load for Ladder per Engineering Data 2-04 by Ministry of Labour, Ontario - dated July 2014  
-Two loads of 1.1kN each concentrated between any two consecutive attachments  
-Each rung in the ladder designed for conc. load = 1.1kN  
- DL load Factor = 1.25; LL Load Factor = 4.0  
Factored Reaction at each attachment of ladder to supports: = 6.0kN

ALL MAT'L - PAINT ONE SHOP COAT G PAO TYPE

SUM HASTE + HINGE & LATCH



Vriend Engineering to review blocking attachment. Please provide any special fastening requirements.

Ministry of Labour recommends through bolting. Div. 5 Engineer to verify lag bolting is adequate.

PROVIDE 2-2X8 MINIMUM BLOCKING

PROVIDE THROUGH BOLTS

2500 above grade, required by drawings. Please advise if panel height becomes an issue beyond 2200.

SB-8 recommends against expansion anchors. If fastening is required to cross substrates to foundation wall, provide through bolting. Or alternate engineered fastening method.

To face of cladding. Include 50mm cladding depth in bracket dimension.

GC to verify that a 2-piece bracket isn't required to allow EIFS system installation. Attachment must be through cladding to structure. Where 2-piece attachment is required, provide tamper proof fasteners or weld on site.

SOLID BLOCKING BY OTHERS

75x6 RENT + 12# LAG BOLT TYP

2200

LADDER DETAIL

RECEIVED 04/21/2020 09:47PM