

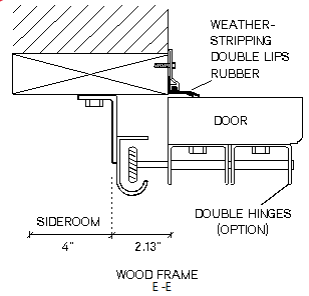
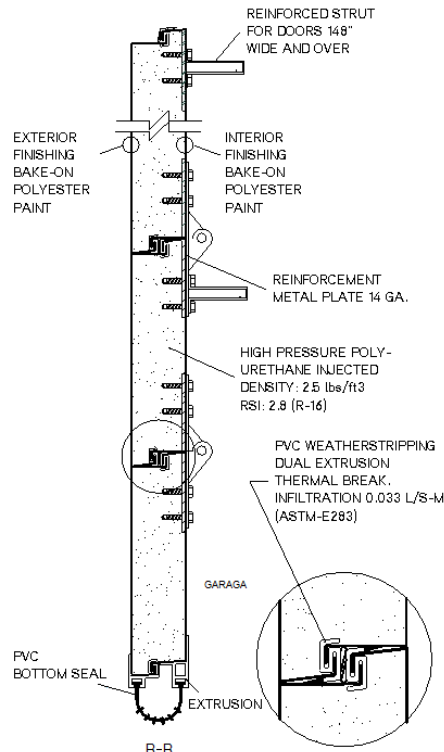
Reviewed ( )  
 Reviewed as noted ( ) ←  
 Revise and resubmit ( )  
 Not reviewed ( )

Date: 2020 Apr. 21  
 Reviewed by: MH

This review by J.C.F.A.Inc. is for the sole purpose of ascertaining conformance with the general design concept for architectural features only, and does not in any way constitute review of the design of engineering elements which form part of the contract documents prepared by others. This review shall not mean that J.C.F.A.Inc. approves the detailed design inherent in the shop drawings, responsibility for which shall remain with the Contractor submitting same, and such review shall not relieve the Contractor of the responsibility for any omissions in the shop drawings or of any errors in the contract documents. The Contractor is responsible for dimensions to be confirmed and correlated at the job site, for information that pertains solely to fabrication processes or to techniques of construction and installation, and for coordination of the work of all trades.

Jason C. Flynn Architect Inc. (J.C.F.A.Inc.)

GC. monitor framing heights carefully. Only 2" tolerance to ceiling.



**REVIEWED**  
 By Pat Newton at 1:17 pm, Mar 17, 2020

**Model:** G-5000, Grooved  
**Quantity:** 2  
**Size:** 12' 0" x 9' 0" (width x height)  
**Sections:** 13/4"-thick 26-gauge galvanized steel, insulation R-16, quantity: 5  
**Color:** Claystone  
**Options:** Bottom W/S PVC Black complete

**Hardware:** 3" Industrial (solid shaft)  
**Movement:** Standard Lift  
**Options:** Double hinges  
 Prepared for wood frame  
 15 inch radius  
 Steel roller  
 68 000 cycles torsion spring  
 Weight (Door + Hrdw) : 222 lb.  
 Weight (Hrdw) : 34 lb.  
 Headroom: 16 in.  
 Upcharge stainless cables  
 Precision and "football"

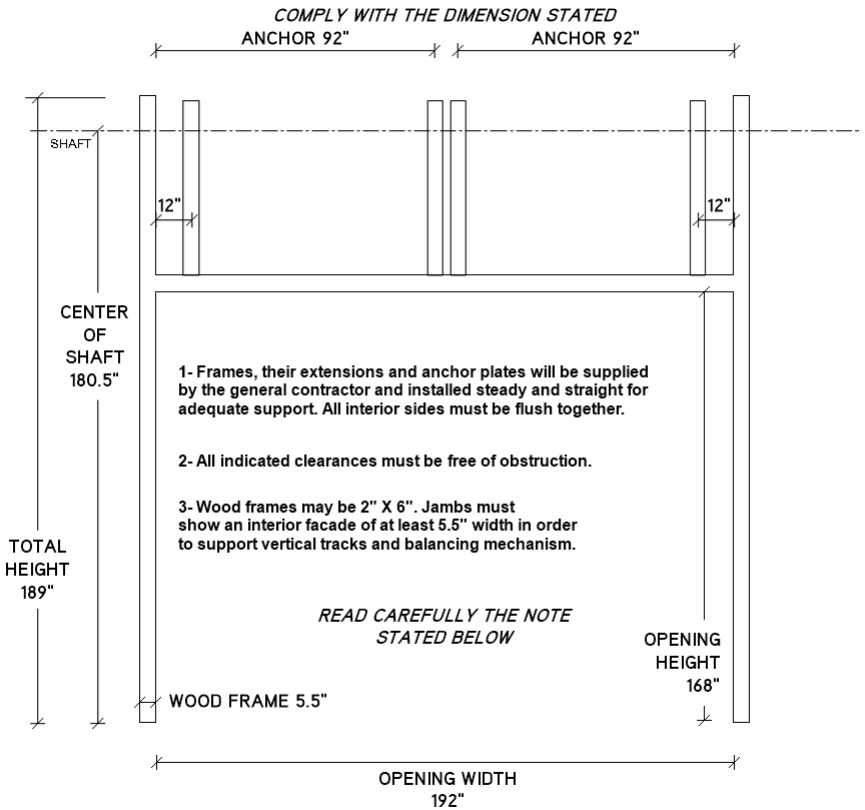
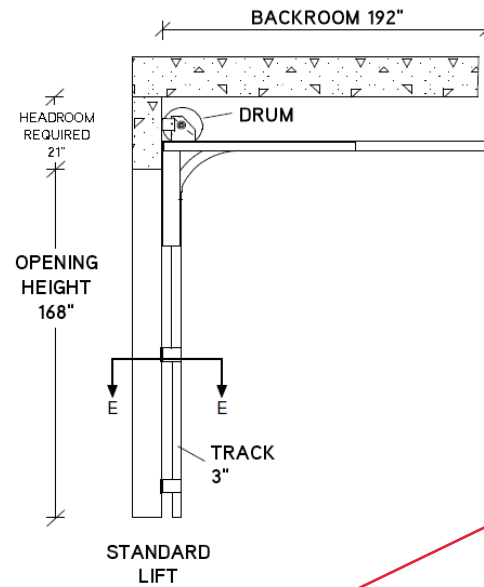
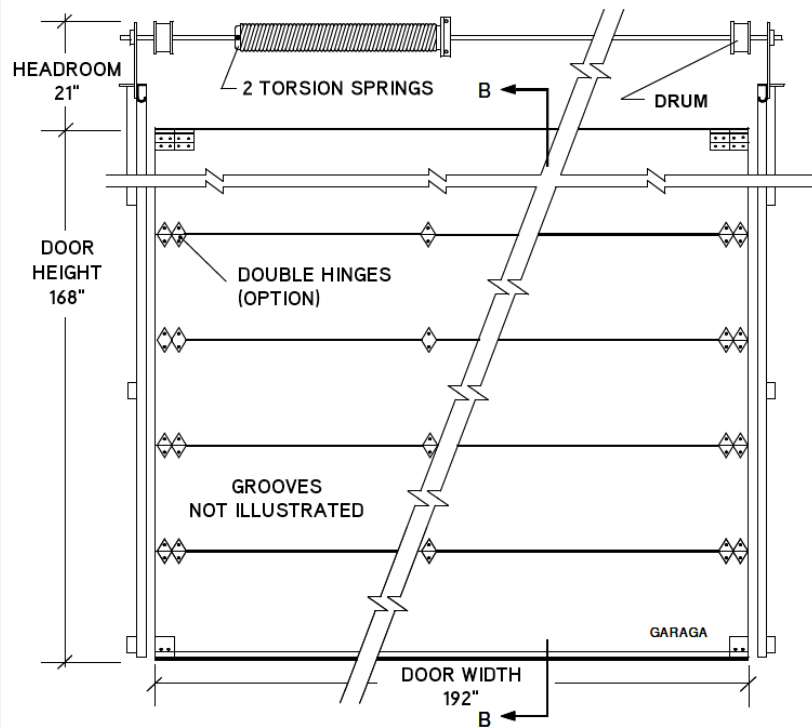
**Operation:** Trolley opener  
**OPERATOR NOTE:** Exterior photo for free entrance



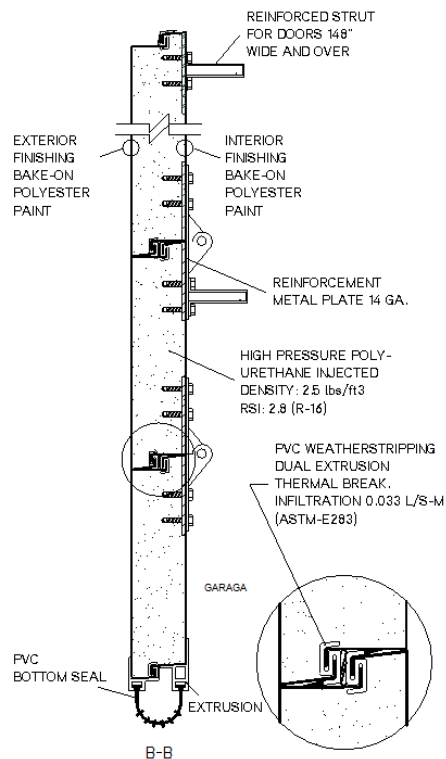
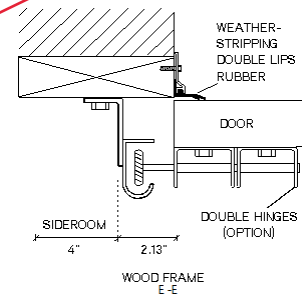
Door operator and sensor and controls required as separate submission.

OVERHEAD GARAGE DOORS	
<b>Project:</b>	ENTERPRISE RENT-A-CAR
<b>Quotation:</b>	2095836-5
<b>Door:</b>	103
<b>Distributor:</b>	The Door company inc --- METCA
<b>Architect:</b>	
<b>Contractor:</b>	
<b>Date:</b>	2020/03/17
<b>Page:</b>	Page 1 / 4





GC. monitor framing heights carefully. Only 3" tolerance to ceiling.



**Model:** G-5000, Grooved  
**Quantity:** 2  
**Size:** 16' 0" x 14' 0" (width x height)  
**Sections:** 1 3/4"-thick 26-gauge galvanized steel, insulation R-16, quantity: 7  
**Color:** Claystone  
**Options:** Bottom W/S PVC Black complete

**Hardware:** 3" Industrial (solid shaft)  
**Movement:** Standard Lift  
**Options:** Double hinges  
 Prepared for wood frame  
 Continuous angle  
 15 inch radius  
 Steel roller  
 65 000 cycles torsion spring  
 Weight (Door + Hrdw) : 490 lb.  
 Weight (Hrdw) : 109 lb.  
 Headroom: 17 in.  
 Struts quantity : 6  
 Upcharge stainless cables

**Operation:** Precision and "football"  
 Trolley opener  
**OPERATOR NOTE:** Exterior photo for free entrance

**OVERHEAD GARAGE DOORS**

<b>Project:</b>	ENTERPRISE RENT-A-CAR
<b>Quotation:</b>	2095836-5
<b>Door:</b>	104
<b>Distributor:</b>	The Door company inc --- METCA
<b>Architect:</b>	
<b>Contractor:</b>	
<b>Date:</b>	2020/03/17
<b>Page:</b>	Page 2 / 4



**OVERHEAD GARAGE DOORS**

**Project:** ENTERPRISE RENT-A-CAR

**Quotation:** 2095836-5

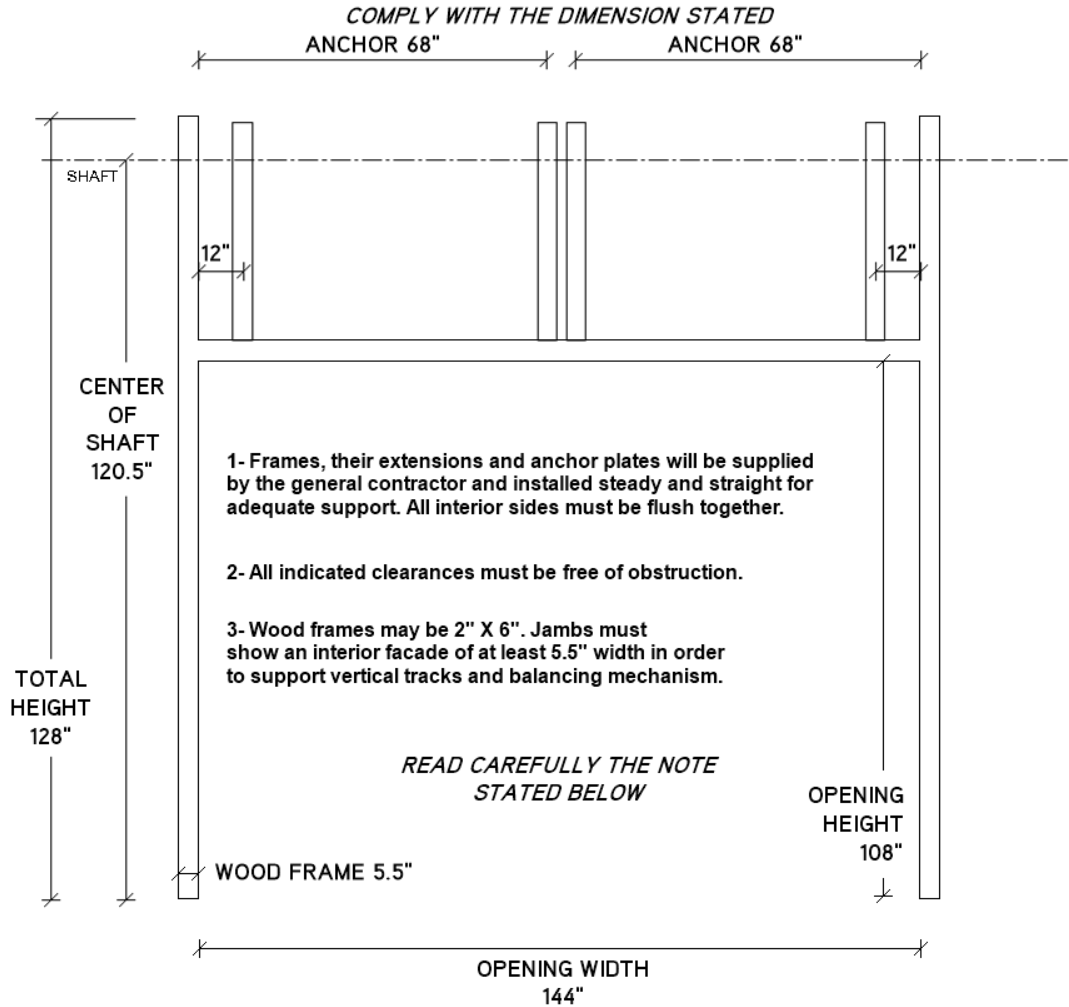
**Door:** 103

**Distributor:** The Door company inc --- METC

**Architect:**

**Contractor:**

**Date:** 2020/03/17



**Model:** G-5000, Grooved  
**Quantity:** 2  
**Size:** 12' 0" x 9' 0" (width x height)  
**Sections:** 1¾"-thick 26-gauge galvanized steel, insulation R-16, quantity: 5  
**Color:** Claystone  
**Options:** Bottom W/S PVC Black complete

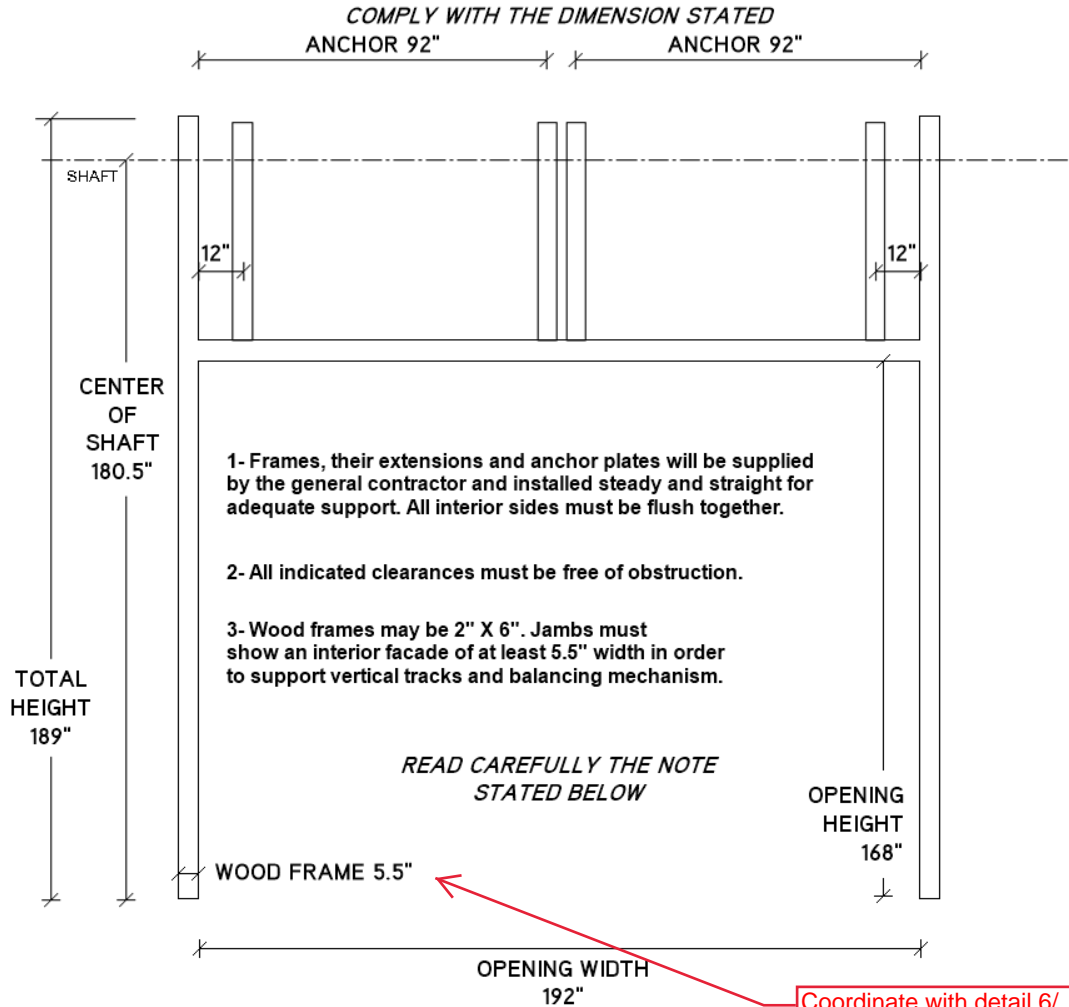
**Hardware:** 3" Industrial (solid shaft)  
**Movement:** Standard Lift  
**Options:** Double hinges  
 Prepared for wood frame  
 15 inch radius  
 Steel roller  
 68 000 cycles torsion spring  
 Weight (Door + Hrdw) : 222 lb.  
 Weight (Hrdw) : 34 lb.  
 Headroom: 16 in.  
 Upcharge stainless cables  
 Precision and "football"

**Operation:** Trolley opener  
**OPERATOR NOTE:** Exterior photo for free entrance



**OVERHEAD GARAGE DOORS**

Project:	ENTERPRISE RENT-A-CAR
Quotation:	2095836-5
Door:	104
Distributor:	The Door company inc --- METC
Architect:	
Contractor:	
Date:	2020/03/17



Coordinate with detail 6/A203 which anticipated 2x4 flat face blocking. Provide 2x6.

<p><b>Model:</b> G-5000, Grooved</p> <p><b>Quantity:</b> 2</p> <p><b>Size:</b> 16' 0" x 14' 0" (width x height)</p> <p><b>Sections:</b> 1¾"-thick 26-gauge galvanized steel, insulation R-16, quantity: 7</p> <p><b>Color:</b> Claystone</p> <p><b>Options:</b> Bottom W/S PVC Black complete</p>	<p><b>Hardware:</b> 3" Industrial (solid shaft)</p> <p><b>Movement:</b> Standard Lift</p> <p><b>Options:</b> Double hinges Prepared for wood frame Continuous angle 15 inch radius Steel roller 65 000 cycles torsion spring Weight (Door + Hrdw) : 490 lb. Weight (Hrdw) : 109 lb. Headroom: 17 in. Struts quantity : 6 Upcharge stainless cables</p>	<p>and "football"</p> <p><b>Operation:</b> Trolley opener</p> <p><b>OPERATOR NOTE:</b> Exterior photo for free entrance</p>
---	--	---