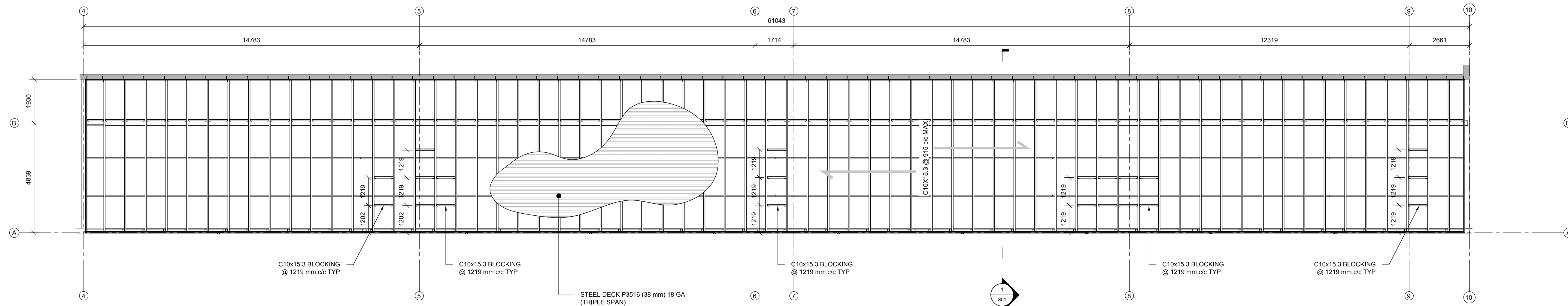


GENERAL NOTES

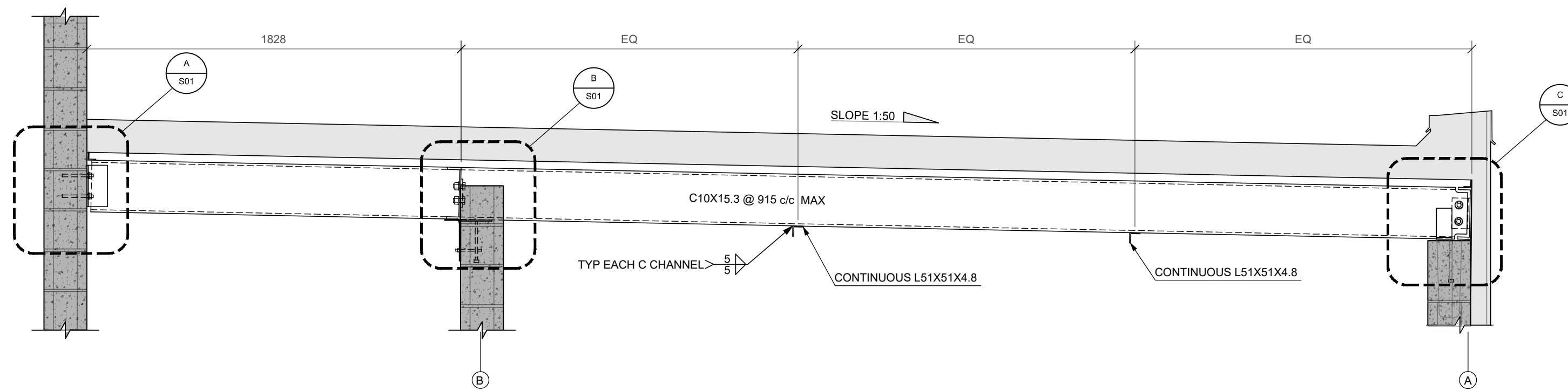
- MATERIALS:** UNLESS NOTED OTHERWISE
 - HSS = A500 (GRADE C) / G40.21M 350W
 - [SQUARE/REC. 345MPa] ROUNDED 317 MPa
 - BEAM "W" = G40.21M 350W
 - ALL OTHERS STEEL = G40.21M 300W
- WELDING STANDARD:**
 - STEEL = CSA W47.1/W59
 - ALUMINIUM = CSA W47.2/W59.2
- CONNECTOR:** UNLESS NOTED OTHERWISE
 - STRUCTURAL BOLT = ASTM A325
 - NONSTRUCTURAL BOLT = ASTM A307
 - THREADED ROD = ASTM A307
 - NELSON STUDS = AC 1020
 - REBAR = G40.21M 400W
- MATERIALS / COATING:**
 - STEEL / PRIMED

DIMENSIONS WILL BE CONFIRMED ON SITE

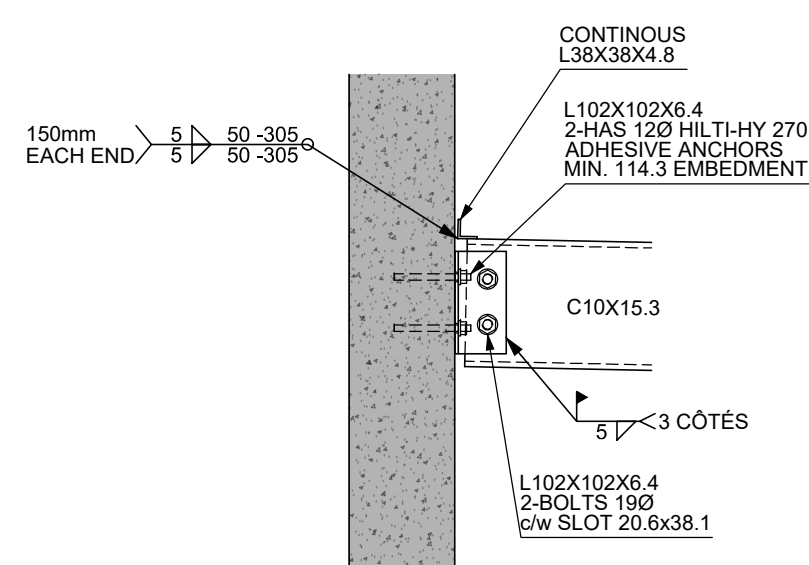


TOP VIEW
SCALE - 1:100

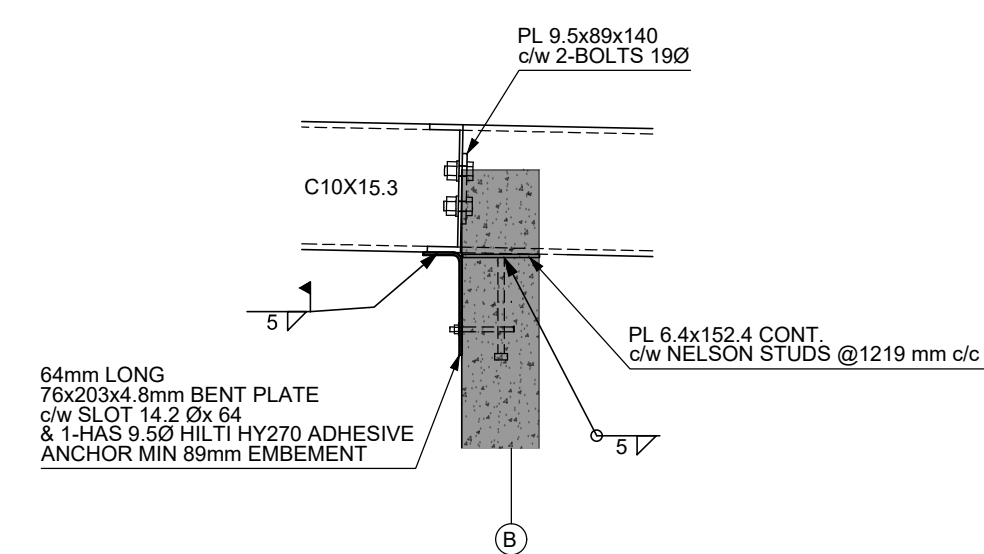
NOTE:
 METAL DECK SHALL BE FASTENED WITH MIN 3/4" Ø
 PUDDLE WELD IN SUPPORT PATTERN 1/2" SIDE LAP
 FASTENING SHALL BE BUTON PUNCHED AT 6" c.c. MAX



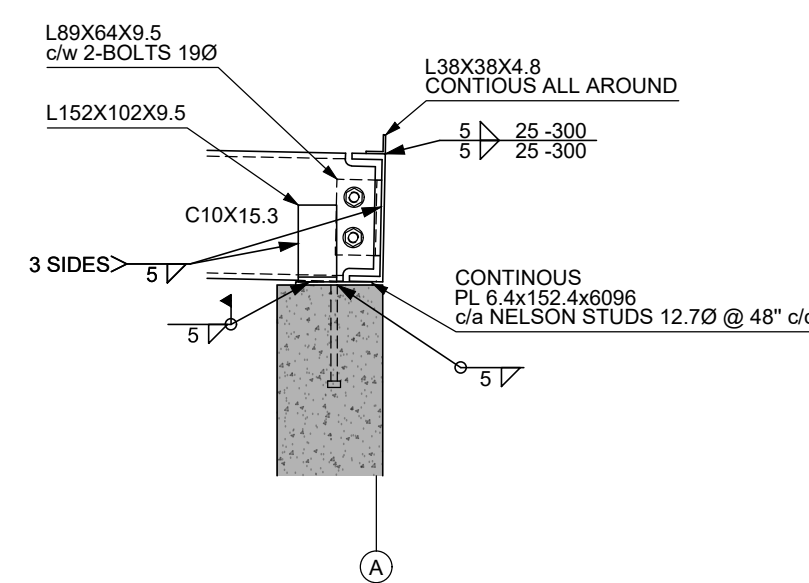
TOP VIEW
SCALE - 1:100



ANCHOR DETAIL
SCALE - 1:15



ANCHOR DETAIL
SCALE - 1:15



ANCHOR DETAIL
SCALE - 1:15

DRAWING REVIEW

The review of this drawing does not in any way relieve the Contractor of responsibility from its actions and compliance with the Contract Documents

ID: CARLETON PLACE ARENA	Contract #: 7558
X No Comment	Submission #: 1
Reviewed as Noted	Review By: SC
Rejected See Remarks	Date: 2020-08-26

Comments:

- Contractor to verify all dimensions prior to fabrication.
- All work to the 2012 Ontario Building Code.
- Refer to EEG drawings S0 to S6 for full notes and details.

EASTERN ENGINEERING GROUP INC.
 Consulting Engineers, Brockville, ON
 Tel: (613)345-0400, Fax: (613)345-0008
 www.easteng.com

FORMAT: 24"x36"

REV.	Date	Description
0	2020-08-17	ISSUED FOR APPROVAL

Project: CARLETON PLACE ARENA Project No.: 78900-03

Title: ROOF FRAMING

Client: TAL-CO BUILF INNOVATIONS LTD

Detailed by: J.J

Verified by: J.LANDRY

Project manager: ERIC MARINIER

Stamp:

