

Carleton Place Arena Carleton Place

Job No. 20-524

Architect

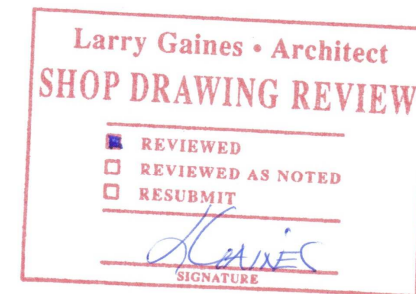
Larry Gaines
14 Bridge Street,
Almonte, ON
K0A 1A0
Tel: 613-256-3630
E-Mail: gaines@bellnet.ca

Coordinator

Tom Warford - Merlin Door Systems Ltd
29 Cleopatra Drive
Ottawa, ON
K2G 0B6
Tel: 613-723-7900
Fax: 613-723-7976
E-Mail: Tom@merlindoor.com

Contractor

Tal-Co Limited
4728 Bank St,
Gloucester, ON
K1T 3W7
Tel: 613-821-2938



Merlin Door Systems
29 Cleopatra Drive
Nepean, ON, K2G 0B6

Carleton Place Arena
Carleton Place
Job No. 20-524

Openings Schedule

Opening Number(s)	Qty	Location 1	To/ From	Location 2	Nominal Width	Nominal Height	Type	Hand	Label	Frame Series	Frame Gauge	Frame Profile	Jamb Depth	Frame Construction	Anchor Type	Door Series	Door Gauge	Door Thickness	Door Type	Door Core	Remarks
D1	1	Dressing RM Corridor 111	From	Exterior	38"	84"	Single	RHR		HM	16	TB	5 3/4"	FW	AWA	LS	16	1 3/4"	F	POLYS	Contractor to confirm jamb depth and anchoring
D1A	1	Dressing RM Corridor 111	From	Exterior	38"	84"	Single	RHR		HM	16	TB	5 3/4"	FW	AWA	LS	16	1 3/4"	F	POLYS	Contractor to confirm jamb depth and anchoring
D1B	1	Dressing RM Corridor 111	From	Exterior	38"	84"	Single	RHR		HM	16	TB	5 3/4"	FW	AWA	LS	16	1 3/4"	F	POLYS	Contractor to confirm jamb depth and anchoring
D2	1	Vestibule 100	From	Exterior				LH-SLIDE		AL											
D3	1	Vestibule 100	To	Lobby 101				LH-SLIDE		AL											
D4	1	Dressing Room Corridor	To	Dressing Room D	38"	84"	Single	RH		HM	16	M	8"	FW	EWA	LS	16	1 3/4"	F	HC	
D4A	1	Dressing Room Corridor	To	Dressing Room C	38"	84"	Single	LH		HM	16	M	8"	FW	EWA	LS	16	1 3/4"	F	HC	
D4B	1	Dressing Room Corridor	To	Dressing Room B	38"	84"	Single	RH		HM	16	M	8"	FW	EWA	LS	16	1 3/4"	F	HC	
D4C	1	Dressing Room Corridor	To	Dressing room A	38"	84"	Single	LH		HM	16	M	8"	FW	EWA	LS	16	1 3/4"	F	HC	
D5	1	Dressing Room D	To	Washroom	38"	84"	Single	RH		HM	16	M	8"	FW	EWA	LS	16	1 3/4"	F	HC	
D5A	1	Dressing Room C	To	Washroom	38"	84"	Single	LH		HM	16	M	8"	FW	EWA	LS	16	1 3/4"	F	HC	
D5B	1	Dressing Room B	To	Washroom	38"	84"	Single	RH		HM	16	M	8"	FW	EWA	LS	16	1 3/4"	F	HC	
D5C	1	Dressing Room A	To	Washroom	38"	84"	Single	LH		HM	16	M	8"	FW	EWA	LS	16	1 3/4"	F	HC	
D6	1	Staff Corridor 108	To	Meeting Room 109	38"	84"	Single	RH		HM	16	M	8"	FW	EWA	LS	16	1 3/4"	F	HC	
D7	1	Staircase 104	To	Meeting Room 109	38"	84"	Single	RH	UL-B	HM	16	M	6 1/4"	FW	Z-CLIP	LS	16	1 3/4"	F	HC	



Merlin Door Systems
29 Cleopatra Drive
Nepean, ON, K2G 0B6

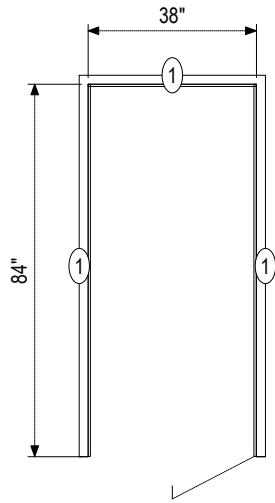
Carleton Place Arena
Carleton Place
Job No. 20-524

Opening Number(s)	Qty	Location 1	To/ From	Location 2	Nominal Width	Nominal Height	Type	Hand	Label	Frame Series	Frame Gauge	Frame Profile	Jamb Depth	Frame Construction	Anchor Type	Door Series	Door Gauge	Door Thickness	Door Type	Door Core	Remarks
D8	1	Staff Corridor 108	To	Staff room 110	38"	84"	Single	LH		HM	16	M	8"	FW	EWA	LS	16	1 3/4"	F	HC	
D9	1	Corridor 200	To	Office 201	38"	84"	Single	LH		HM	16	M	5 5/8"	FW	Z-CLIP	LS	16	1 3/4"	F	HC	
D10	1	Corridor 200	To	Office 204	38"	84"	Single	RH		HM	16	M	5 5/8"	FW	Z-CLIP	LS	16	1 3/4"	F	HC	
D11	1	Corridor 200	To	Office 203	38"	84"	Single	LH		HM	16	M	5 5/8"	FW	Z-CLIP	LS	16	1 3/4"	F	HC	
D12	1	Corridor 200	To	Office 202	38"	84"	Single	LH		HM	16	M	5 5/8"	FW	Z-CLIP	LS	16	1 3/4"	F	HC	
D13	1	Lobby 101	To	Office 107	38"	84"	Single	LH		HM	16	M	5 3/4"	FW	AWA	LS	16	1 3/4"	F	HC	Contractor to confirm jamb depth and anchoring
D14	1	Lobby 101	From	New Kitchen 102	38"	84"	Single	RHR		HM	16	M	6"	FW	EWA	LS	16	1 3/4"	F	HC	
D15	1	Lobby 101	To	Janitor / Storage	38"	84"	Single	LH	UL-B	HM	16	M	6"	FW	EWA	LS	16	1 3/4"	F	HC	
D16	1	Corridor 200	To	Existing Staircase	38"	84"	Single	LH	UL-B	HM	16	M	5 3/4"	FW	AWA	LS	16	1 3/4"	F	HC	Contractor to confirm jamb depth and anchoring
D17	1	Existing Hall	To	Corridor 200	38"	84"	Single	RH		HM	16	M	5 3/4"	FW	AWA	LS	16	1 3/4"	F	HC	Contractor to confirm jamb depth and anchoring
D18	1	Corridor 200	To	Existing Staircase	38"	84"	Single	RH	UL-B	HM	16	M	5 3/4"	FW	AWA	LS	16	1 3/4"	F	HC	Contractor to confirm jamb depth and anchoring
D19	1	Dressing Room Corridor	To	Stairs 115	38"	84"	Single	LHRHR	UL-B	HM	16	M	8"	FW	EWA	LS	16	1 3/4"	F	HC	
D19A	1	Staff Corridor 108	To	Exit Corridor	38"	84"	Single	RHR	UL-B	HM	16	M	8"	FW	EWA	LS	16	1 3/4"	F	HC	
D20	1	Lobby 101	To	Office	38"	84"	Single	LH		HM	16	M	5 3/4"	FW	AWA	LS	16	1 3/4"	F	HC	Contractor to confirm jamb depth and anchoring

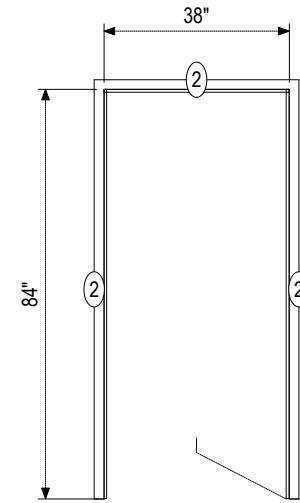


Merlin Door Systems
29 Cleopatra Drive
Nepean, ON, K2G 0B6

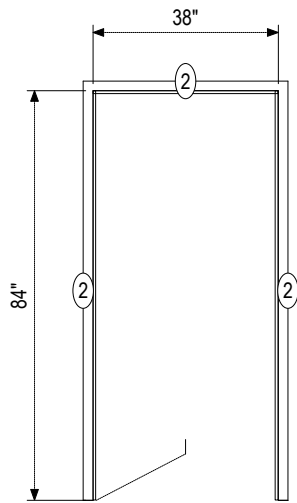
Carleton Place Arena
Carleton Place
Job No. 20-524



E-1



E-2

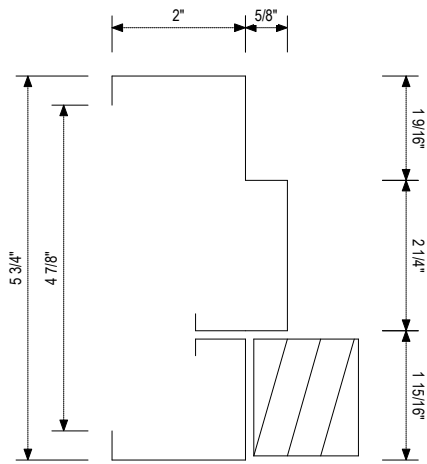


E-3

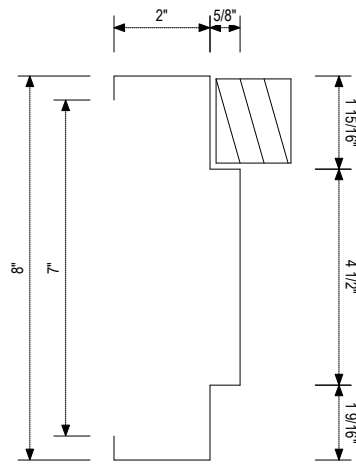


Merlin Door Systems
29 Cleopatra Drive
Nepean, ON, K2G 0B6

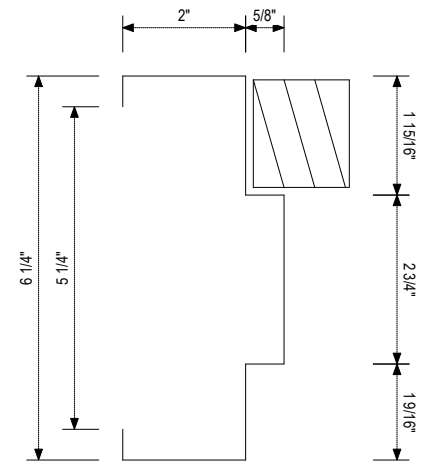
Carleton Place Arena
Carleton Place
Job No. 20-524



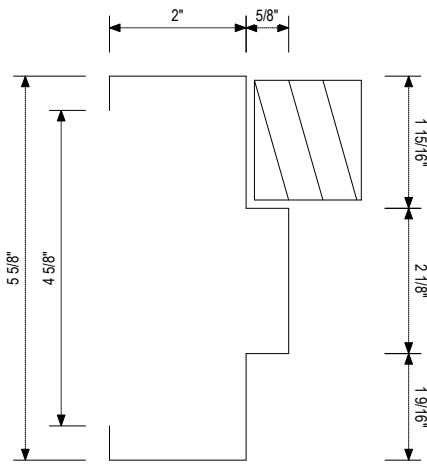
1



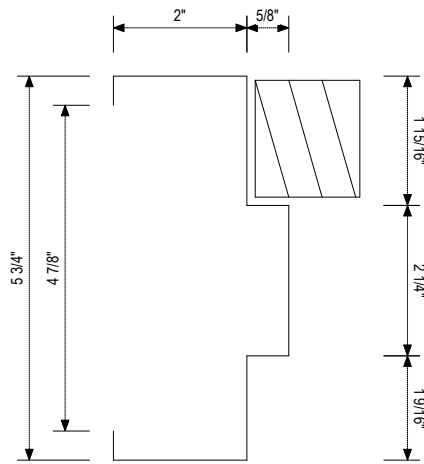
2



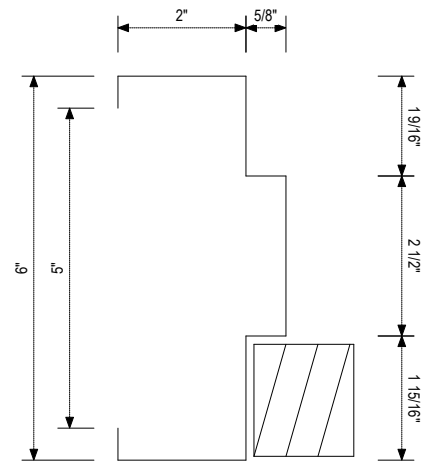
3



4



5

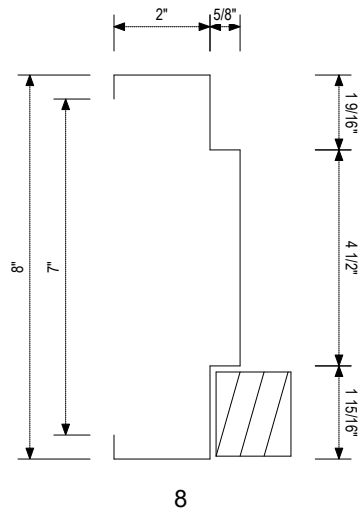
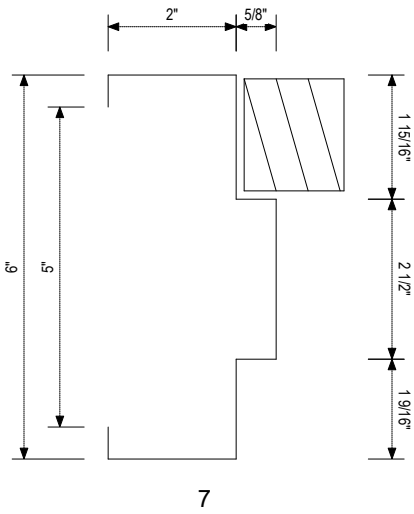


6



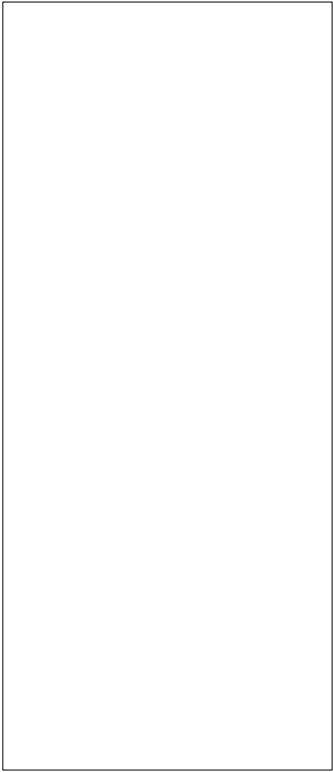
Merlin Door Systems
 29 Cleopatra Drive
 Nepean, ON, K2G 0B6

Carleton Place Arena
 Carleton Place
 Job No. 20-524



Merlin Door Systems
29 Cleopatra Drive
Nepean, ON, K2G 0B6

Carleton Place Arena
Carleton Place
Job No. 20-524



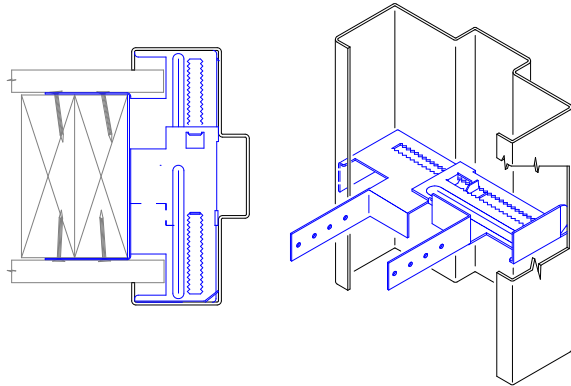
F



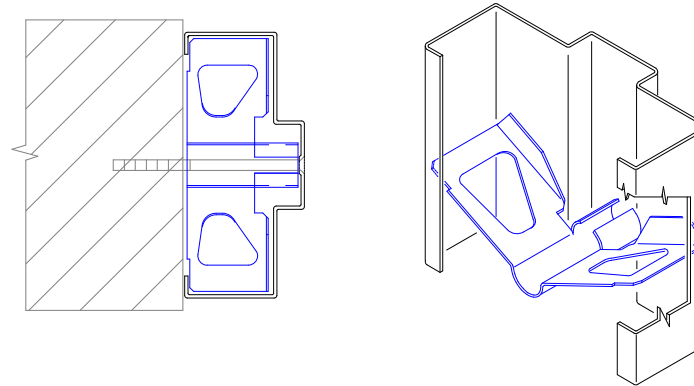
Merlin Door Systems
29 Cleopatra Drive
Nepean, ON, K2G 0B6

Carleton Place Arena
Carleton Place
Job No. 20-524

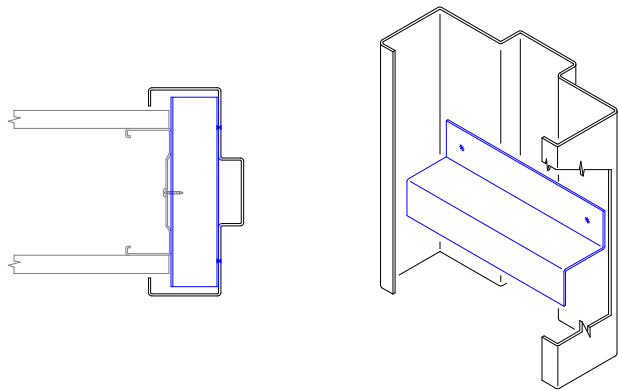
Anchor Type



Adjustable Wall Anchor (AWA)



Existing Wall Anchor (EWA)



Welded "Z" Clip (Z-CLIP)



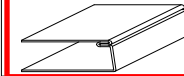
Merlin Door Systems
29 Cleopatra Drive
Nepean, ON, K2G 0B6

Carleton Place Arena
Carleton Place
Job No. 20-524

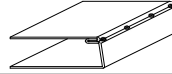
LS SERIES DOOR-AVAILABLE CONSTRUCTION

D-2

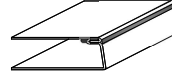
EDGE OPTIONS



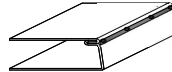
LS - LOCK SEAM (STANDARD)
Continuous, mechanical interlocking edge seam filled with internal sealant.



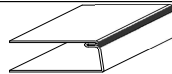
TW - TACK WELDED (OPTIONAL)
Edge seams tack welded at 6" to 10" O.C.



WF - WELDED & FILLED (OPTIONAL)
Edge seams tack welded on the ends and filled with a special paintable compound that will not shrink or crack.



TF - TACK & FILLED (OPTIONAL)
Edge seams tack welded at 6" to 10" O.C. and Bondo filled.



LW - LOCK WELDED (OPTIONAL)
Edge seam continuously welded. Available in 18 GA and 16 GA with HC or TRR cores only. Maximum size 4'0" x 8'0".

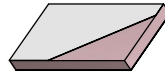
CORE OPTIONS



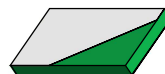
HC - HONEYCOMB (STANDARD)
High density honeycomb paper core laminated to the inside of door.
R value = 2.62
U value = 0.381



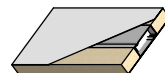
IS - POLYSTYRENE INSULATION (OPTIONAL)
Polystyrene slab bonded to the inside of door.
R value = 6.87
U value = 0.146



IU - POLYURETHANE INSULATION (OPTIONAL)
Polyurethane slab bonded to the inside of door.
R value = 12.23
U value = 0.082



TRR - TEMPERATURE RISE RATED (OPTIONAL)
Special high temperature core laminated to door skin's to reduce heat transmission as follows:
(250°F @ 30 Minutes, 450°F @ 60 Minutes, 250°C @ 60 Minutes).



SSL - STEEL STIFFENED LAMINATED (OPTIONAL)
20 GA Steel Stiffened Channels laminated to door skin 6" O.C. Voids filled with high density insulation.
R value = 1.17
U value = 0.855

DISCLAIMER NOTICE:

"R" & "U"- values are industrial standards based on core slab only and not on assembled door unit.



VISION HOLLOW METAL LTD.

DRAFT - UNDER REVISION



Merlin Door Systems
29 Cleopatra Drive
Nepean, ON, K2G 0B6

Carleton Place Arena
Carleton Place
Job No. 20-524