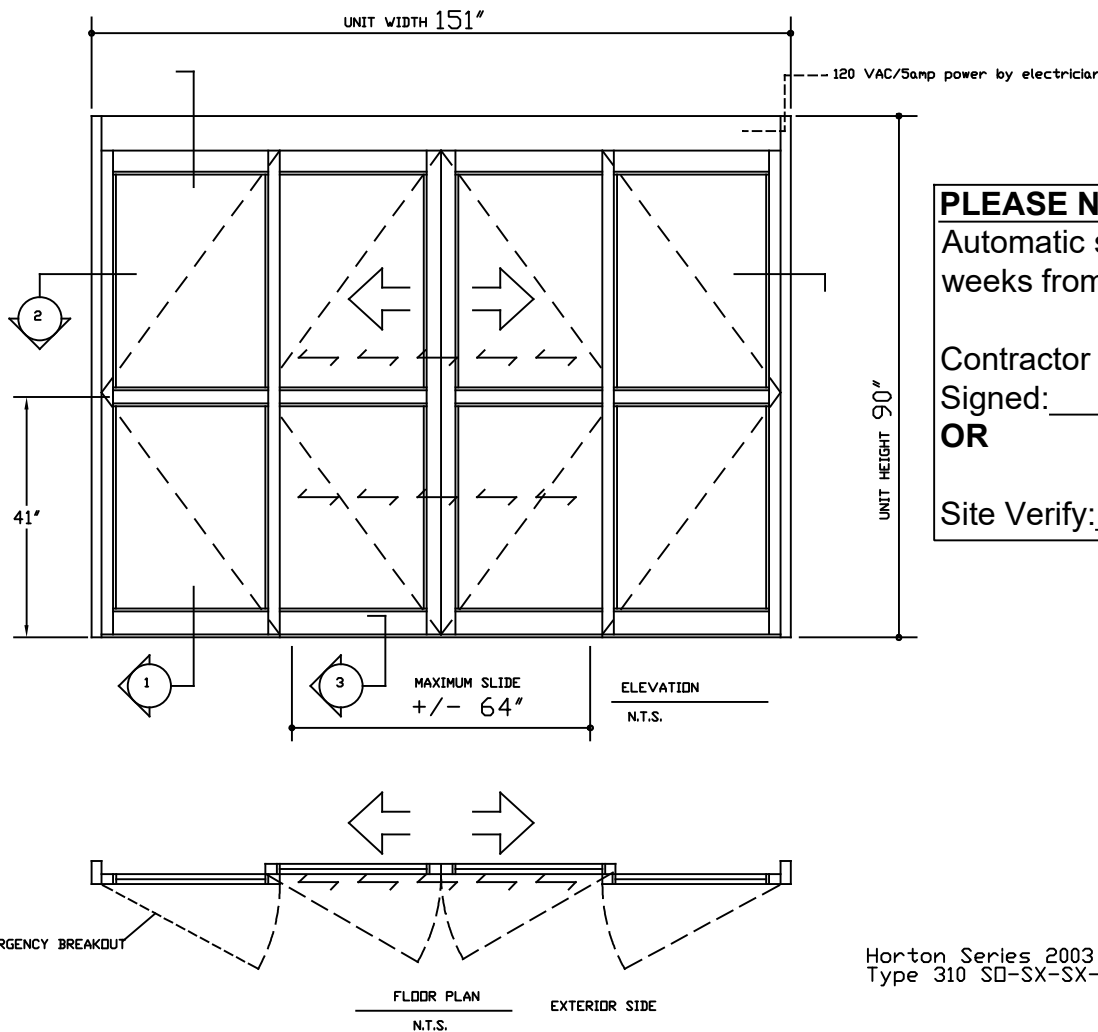
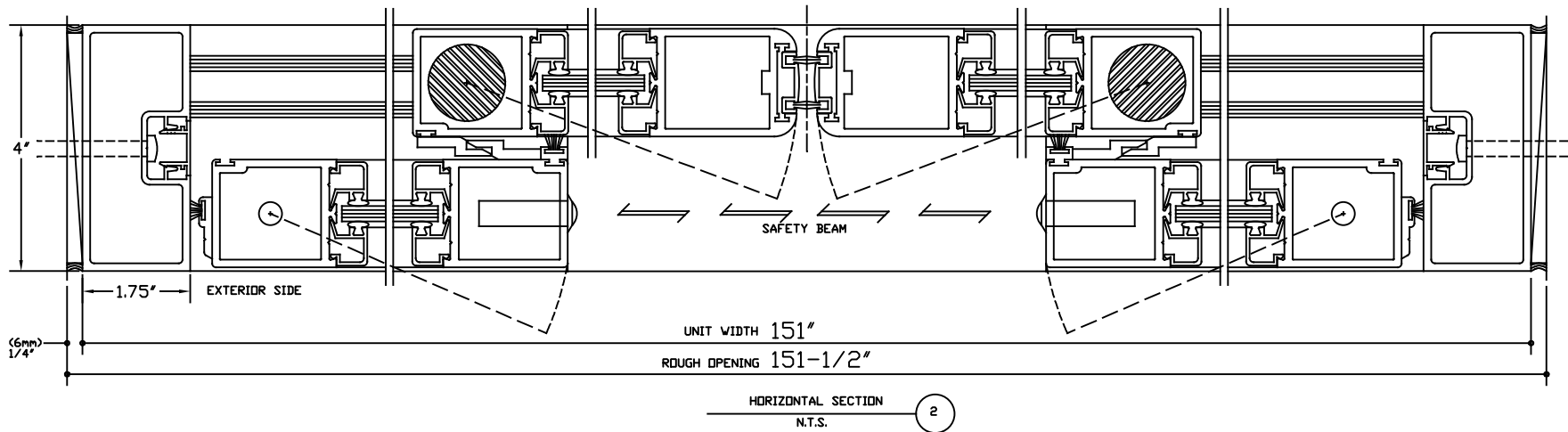
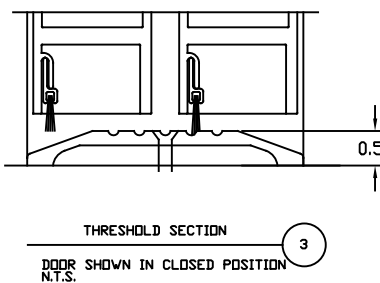


Note
Confirm dimensions on site



PLEASE NOTE:
Automatic sliding entrances are currently running 6-8 weeks from confirmation of rough opening sizes.

Contractor guarantees opening as per this drawing
Signed: _____ Date: _____
OR
Site Verify: _____

Larry Gaines • Architect
SHOP DRAWING REVIEW

REVIEWED
 REVIEWED AS NOTED
 RESUBMIT

LARRY GAINES
SIGNATURE

Horton Series 2003
Type 310 SO-SX-SX-SO

Horton Automatics of Ontario
1150 Blair Road, Unit #1,
Burlington. Ontario
L7M 3T4
Phone-(905) 331 7491
Fax-(905) 331-3035

Project: Carleton Place Arena
Contractor: TAL-CO Building Innovations Ltd.
Door #'s D2 & D3
Product: Horton Series 2003 SO-SX-SX-SO, Type 310
Finish: Clear Anodized Aluminum

Glass: 6mm Clear tempered.

Accessories: Optex iOneXT motion/presence detectors and M/S manual locking.

Prepared By:
B. Walker
Date:
August 11, 2020