

**Carleton Place Arena Addition Roof Assemblies**

Roof field system composition

Layer	Detail
By others	Steel Deck
1	IKO MVP Vapour Barrier
2	IKO IKOTerm 3.5" 4x8 panel
3	IKO IKOTerm 3.5" 4x8 panel
4	POSI-Slope 2% tapered package (sumps and crickets) as per plan
5	IKO Fast N Stick 180
6	IKO Torchflex 250 GR - torch applied to the 180

Roof vertical flashing system composition

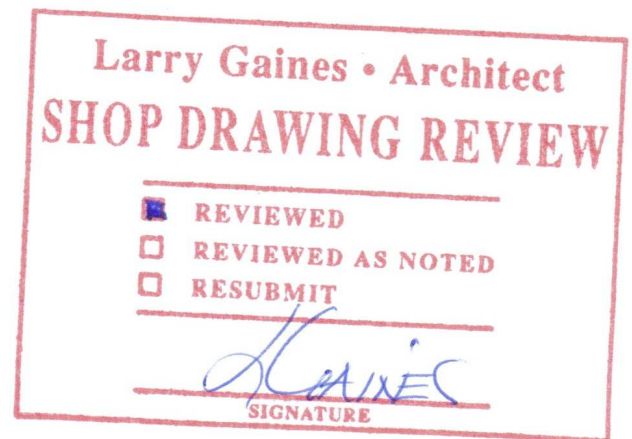
Layer	Detail
*Leave in place	Structural elements, base sheathing of vertical surfaces
1	IKO SAM Adhesive
2	IKO Armourbond Flash
3	IKO Torchflex 250 GR - torch applied to the Armourbond Flash

**Accessories:**

Liquid Membrane - MS Detail by IKO  
 Loose Granules by IKO  
 Mod Bit Primer by IKO

Any questions please feel free to contact me.

Regards,  
 Josh Lyon  
 Estimator and Project Manager



# MVP (Modified Vapour Protector)

VAPOUR RETARDER

STOCK# 7940002

ROLLS PER PALLET: 24

PALLET SIZE: 132 cm x 112 cm

(52 in x 44 in)

LENGTH: 32 m (105 ft)

WIDTH: 1000 mm (39.4 in)

AREA: 32 m<sup>2</sup> (344 ft<sup>2</sup>)

MEMBRANE COVERAGE: 29.26 m<sup>2</sup> (315 ft<sup>2</sup>)

THICKNESS: 1.2 mm (47.2 mils)

SELVAGE: 76 mm (3 in)

Note: All reported values are nominal.



# COMMERCIAL



Designed specifically as a vapour retarder, let IKO MVP Vapour Retardant go to work for your next roofing project.

## MVP (Modified Vapour Protector)

VAPOUR RETARDER

### Film Laminated

This vapour retarder is composed of modified SBS asphalt with a top surface of high density cross laminated polyethylene film.

### Designed for Multiple Deck Surfaces

IKO MVP is a self-adhering membrane used over various types of roof decks such as steel, concrete or wood.

### Pre-Insulation Installation

This product is designed as a vapour retarder before the installation of the roof system and is not designed as a temporary waterproofing membrane. MVP should not be applied at temperatures below -10°C.

- STRONG
- SELF-ADHERING

# MVP (Modified Vapour Protector)

VAPOUR RETARDER

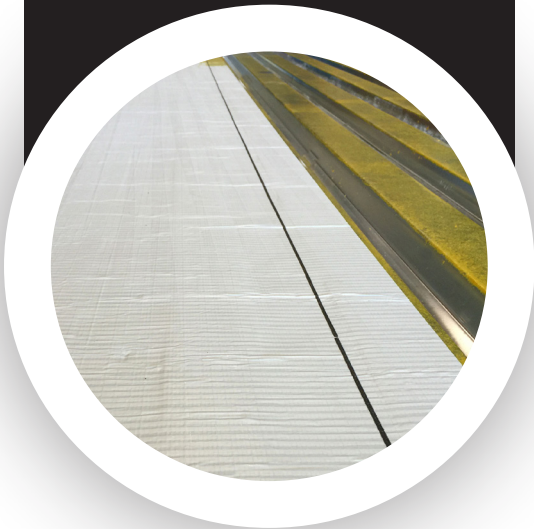


# IKO<sup>®</sup> COMMERCIAL

IKO Modified Vapour Protector conforms to CAN2-51.34M.

ISO 9001:2015 REGISTERED FACILITY

Please contact your IKO Technical Representative for specific slope requirements.



CHARACTERISTICS	UNITS	NOMINAL VALUE	TEST METHOD**	STANDARD LIMITS
Cold Flex:	°C (°F)	✓	ASTM D5147	MIN: -18 (0)
Water Vapour Transmission:	ng/(Pa·s·m <sup>2</sup> )	<1.5	ASTM E96-B	-
Tensile -Strength MD: XD:	kN/m (lbf/in)	✓ ✓	ASTM D5147	MIN: 8.78 (50) 3.5 (20)
Ultimate Elongation MD: XD:	%	✓ ✓	ASTM D5147	MIN: 20

\*\* Although both ASTM and CGSB may have requirements for a particular test, only the more stringent is indicated. The information on this product information sheet is based upon data considered to be true and accurate, based on laboratory tests and production measurements, and is offered solely for the user's consideration, investigation and verification. Nothing contained herein is representative of a warranty or guarantee for which the manufacturer can be held legally responsible. The manufacturer does not assume any responsibility for any misrepresentation or assumptions the reader may formulate.

# Armourbond Flash

SELF-ADHERING  
BASE SHEET FLASHING

STOCK# 7920010

ROLLS PER PALLET: 30

PALLET SIZE: 132 cm x 112 cm

(52 in x 44 in)

LENGTH: 15 m (49 ft)

WIDTH: 1005 mm (39.6 in)

AREA: 15 m<sup>2</sup> (161 ft<sup>2</sup>)

THICKNESS: 2.5 mm (98 mils)

SELVAGE: 90 mm (3.5 in)

Note: All reported values are nominal.



# COMMERCIAL



Durable, reinforced and easy to install, let Armourbond Flash Self-Adhering Base Sheet go to work for your next roofing project.

## Armourbond Flash

SELF-ADHERING BASE SHEET FLASHING

### Tough

Armourbond Flash incorporates a tough non-woven reinforced polyester mat strengthened with select glass fiber strands. The mat is coated top and bottom with select SBS polymers and premium asphalt to a thickness of approximately 2.5 mm (98 mils).

### Film Coated Top and Release Bottom

A thin micro-perforated film covers the top surface of the product, while the self-adhering underside is covered by a removable silicone treated release film.

### Perfect for Flashing

Armourbond Flash may be placed in flame-sensitive areas for base flashing details where a heat fused cap flashing will be used.

- DURABLE
- SELF-ADHERING

# Armourbond Flash

SELF-ADHERING  
BASE SHEET FLASHING



**IKO**<sup>®</sup>

**COMMERCIAL**



**Armourbond Flash** satisfies the requirements of CGSB-37.56-M.

ISO 9001 – 2008 REGISTERED FACILITY

Please contact your *IKO Technical Representative* for specific slope requirements.

CHARACTERISTICS	UNITS	MEETS/ EXCEEDS	SPECIFICATION	TEST METHOD**	STANDARD LIMITS
Cold Flex:	°C (°F)	✓	ASTM D6164	ASTM D5147	MIN: -18 (0)
Tensile Strength MD: XD:	kN/m (lbf/in)	✓ ✓	ASTM D6164	ASTM D5147	MIN: 8.8 (50)
Ultimate Elongation MD: XD:	%	✓ ✓	ASTM D6164	ASTM D5147	MIN: 38
Tear Strength MD: XD:	N (lbf)	✓ ✓	CGSB-37.56-M	CGSB-37.56-M	MIN: 20 (4.5)*
Tensile -Tear MD: XD:	N (lbf)	✓ ✓	ASTM D6164	ASTM D5147	MIN: 246 (55)

\* CGSB-37.56-M REVISION, 9TH DRAFT, DATED JANUARY, 1997 \*\* Although both ASTM and CGSB may have requirements for a particular test, only the more stringent is indicated. See also Material Information Sheet - MIS # 1224 Brampton and 1724 Sumas. The information on this product information sheet is based upon data considered to be true and accurate, based on laboratory tests and production measurements, and is offered solely for the user's consideration, investigation and verification. Nothing contained herein is representative of a warranty or guarantee for which the manufacturer can be held legally responsible. The manufacturer does not assume any responsibility for any misrepresentation or assumptions the reader may formulate.



# IKO Mod-Bit Primer

MOD-BIT PRIMER



# IKO<sup>®</sup> COMMERCIAL



STOCK# 7870010

SIZE: 18.93L (5 US gal)

PAILS PER PALLET: 36

PALLET SIZE: 122 cm x 102 cm

(48 in x 40 in)

COVERAGE\*: 4 m<sup>2</sup>/L to 7 m<sup>2</sup>/L

(165 ft<sup>2</sup>/gal to 250 ft<sup>2</sup>/gal)

DRYING TIME: 60 minutes

Note: All reported values are nominal.

## IKO Mod-Bit Primer

MOD-BIT PRIMER

### Solvent Based

IKO Mod-Bit Primer is solvent-based and intended to prepare roofing and wall surfaces prior to applying heat-welded membranes.

### Easy Application

IKO Mod-Bit Primer can be applied with a brush, roller or sprayer.

### Quick Drying

IKO Mod-Bit Primer is formulated with a rubber modified bitumen and fast-evaporating solvents for quick drying.

### Suitable for Multiple Substrates

The modified bitumen enhances membrane adhesion to a variety of substrates such as gypsum, masonry, metal, concrete or CMU and improves membrane performance over a wide range of temperatures and conditions.\*

Quick drying and easy to apply, let IKO Mod-Bit Primer go to work for your next project.

- EASY APPLICATION
- QUICK DRYING

\*Depending on porosity and texture of surface

# IKO Mod-Bit Primer

MOD-BIT PRIMER



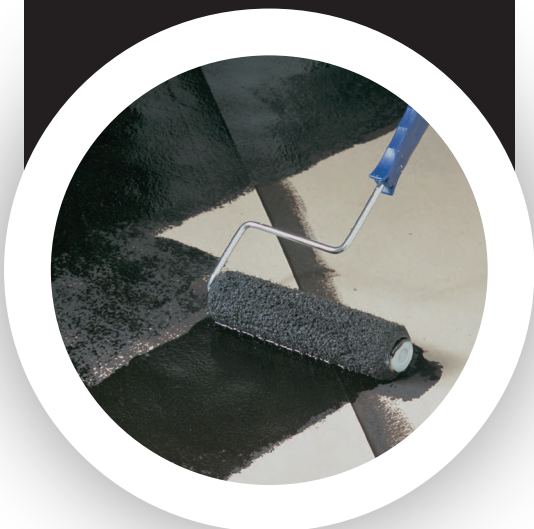
# IKO<sup>®</sup> COMMERCIAL

**Application considerations:** Surfaces to be primed must be dry and clean. Primer must be thoroughly dry before attempting to apply the membrane. Do not attempt to accelerate the drying time of the primer by heating with a torch! Always use caution when handling flammable materials.

All local health and safety rules and precautions should be followed when working with IKO products. See Also Material Safety Data Sheet MSDS #1255.

Good building practices include ensuring the application surface is adequately prepared for the adhesion of the product prior to installing it. For further details please refer to the "IKO Installation Guidelines".

Please contact your IKO Technical Representative for specific slope requirements.



CHARACTERISTICS	UNITS	NOMINAL VALUE
Non-Volatile (By Weight):	%	35
Flash Point (TCC):	°C (°F)	> -18 (-4)
Specific Gravity:	Kg/L	0.85
Viscosity @ 25°C	cps	50 - 100
Volatile Organic Compounds (VOC):	g/L	545
Minimum Application Temperature:	°C (°F)	> -12 (10.4)
Coverage	m <sup>2</sup> /L (ft <sup>2</sup> /gal)	4 to 7 (165 to 250)
Drying Time (@ 50% R.H., 25°C, and Dry Substrate)**	Hours	1
Service Temperature:	°C (°F)	-40 to 66 (-40 to 150)

The information on this product information sheet is based upon data considered to be true and accurate, based on laboratory tests and production measurements, and is offered solely for the user's consideration, investigation and verification. Nothing contained herein is representative of a warranty or guarantee for which the manufacturer can be held legally responsible. The manufacturer does not assume any responsibility for any misrepresentation or assumptions the reader may formulate.

# IKO MS Detail

DETAIL ACCESSORY

 **IKO**® **COMMERCIAL**



STOCK# 1850079

SIZE: 3.78 L (1 gal)

PAILS PER PALLET: 75

PALLET SIZE: 122 cm x 102 cm

(48 in x 40 in)

PACKAGING: 315 ml sausages

PAIL SIZE: 12 units/pail

COLOUR: Medium Grey

Note: All reported values are nominal.

An excellent liquid membrane option that's solvent-free and dual purpose, let IKO MS Detail go to work for your next commercial roofing project.

- SOLVENT FREE
- PROTECTS  
DETAIL AREAS

## IKO MS Detail

DETAIL ACCESSORY

### Ideal for Complex Detail Areas

IKO MS Detail was designed to coat and protect exposed complex detail areas such as flashings, mechanical equipment, and roof/wall penetrations which would normally require intricate labour.

### Waterproof

IKO MS Detail cures as a result of a chemical reaction with the ambient humidity and becomes a tough, monolithic waterproof membrane.

### Easy to Apply

IKO MS Detail is a solvent-free, liquid-applied membrane coating that serves as an excellent waterproofing option for hard to reach roof areas.

### Multi-Use

IKO MS Detail also may be used for bridging/sealing metal joints, transitions or for coating complex surfaces requiring a membrane. For cracks, gaps and voids exceeding 1/8 in., it is recommended to use a woven reinforcement fabric and at least two coats of MS Detail to bridge such gaps effectively.



# IKO MS Detail

DETAIL ACCESSORY



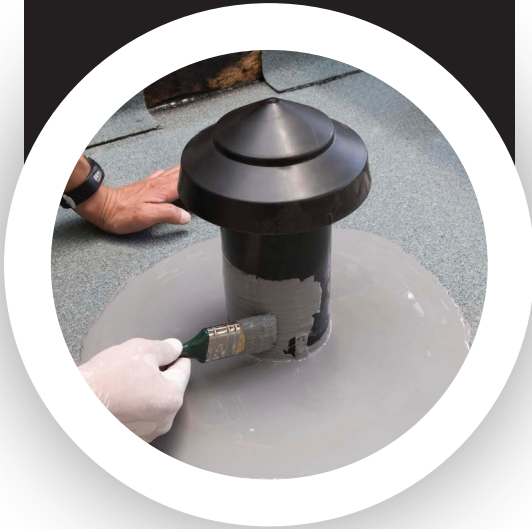
# COMMERCIAL

All local health and safety rules and precautions should be followed when working with IKO products. See also Material Safety Data Sheet MSDS #1253.

Good building practices include ensuring the application surface is adequately prepared for the adhesion of the product prior to installing it. For further details please refer to the "IKO Installation Guidelines".

ISO 9001 – 2008 REGISTERED FACILITY

*Please contact your IKO Technical Representative for specific slope requirements.*



CHARACTERISTICS	UNITS	NOMINAL VALUE
Appearance:	–	Viscous Liquid
Specific Gravity: (@ 25°C)	Kg/L	1.4 – 1.5
Flash Point:	°C (°F)	None
Skin Formation: (@ 20°C)	Minutes	30 - 60
Shelf Life	Months	12
Application Temperature:	°C (°F)	-10 to 40 (15 to 104)
Application Rate:	m <sup>2</sup> /3.8L (ft <sup>2</sup> /gal.)	2.5 (25)
Service Temperature:	°C (°F)	-20 to 88 (-4 to 190)

The information on this product information sheet is based upon data considered to be true and accurate, based on laboratory tests and production measurements, and is offered solely for the user's consideration, investigation and verification. Nothing contained herein is representative of a warranty or guarantee for which the manufacturer can be held legally responsible. The manufacturer does not assume any responsibility for any misrepresentation or assumptions the reader may formulate.

# S.A.M. Adhesive

SELF-ADHERING  
MEMBRANE ADHESIVE

 **IKO**® **COMMERCIAL**



STOCK# 1850032, 1850034

SIZE: 17 L pail (4.49 gal), 3.5 L (1 gal)

PALLET SIZE: 122 cm x 102 cm

(48 in x 40 in)

QUANTITY PER PALLET:

17 L Pail (4.49 gal) - 36

3.5 L Pail (1 gal) - 90 Boxes

(each containing 2 pails)

COLOUR: Gold

COVERAGE: 3 to 6 m<sup>2</sup>/L

DRYING TIME: 60 Minutes

Note: All reported values are nominal.

IKO S.A.M. Adhesive is an outstanding quick drying product for self-adhering membranes. Let S.A.M. Adhesive go to work for your next commercial building project.

- EXCELLENT ADHESION
- VERSATILE

## S.A.M. Adhesive

SELF-ADHERING MEMBRANE ADHESIVE

### Multi-Use

IKO S.A.M Adhesive is a surface conditioner where asphaltic self-adhesive membranes are applied. It is suitable for use on most substrates including wood, glass mat/gypsum sheathing, masonry, concrete and metal.

### Ideal for Vertical & Horizontal Surfaces

S.A.M. provides excellent adhesion properties during the application process, and is very effective on either horizontal or vertical surfaces. Actual drying time depends on the ambient temperature and humidity during application, but requires a minimum 30 minutes for flash off time.

### Cleans and Dries Quickly

IKO S.A.M. Adhesive is a quick-drying, solvent-based surface preparation for use with IKO self-adhering roofing membranes or IKO AquaBarrier self-adhering membranes. All substrates should be clean, dry and free from dust, dirt, oil and grease. IKO S.A.M. Adhesive cleans up easily with mineral spirits.

### Easy to Apply/Bulk Packaged

IKO S.A.M. Adhesive may be applied by using a brush, roller, or by mechanically spraying.

# S.A.M. Adhesive

SELF-ADHERING  
MEMBRANE ADHESIVE



# COMMERCIAL



**IKO S.A.M. Adhesive** should always be used in well-ventilated conditions and kept away from all sources of potential ignition.

All local health and safety rules and precautions should be followed when working with IKO products.

Good building practices include ensuring the application surface is adequately prepared for adhesion of the product prior to installation. For further details, please contact "IKO Technical Services."

Please contact your *IKO Technical Representative* for specific slope requirements.

CHARACTERISTICS	UNITS	NOMINAL VALUE
Specific Gravity	Kg/L	0.80
Percent Solids	% wt./wt.	35
Viscosity @ 25°C	cps	200 - 400
Coverage (Approximate):	m <sup>2</sup> /L (ft <sup>2</sup> /gal)	3 to 6 (122 to 244)
Minimum Application Temperature	°C (°F)	-10 to 40 (14 to 104)
Service Temperature	°C (°F)	-40 to 66 (-40 to 150)

See also Material Safety Data Sheet MSDS #1147. The information on this product information sheet is based upon data considered to be true and accurate, based on laboratory tests and production measurements, and is offered solely for the user's consideration, investigation and verification. Nothing contained herein is representative of a warranty or guarantee for which the manufacturer can be held legally responsible. The manufacturer does not assume any responsibility for any misrepresentation or assumptions the reader may formulate.

# Torchflex™ TP-250-Cap

HEAT WELDED CAP SHEET



# IKO® COMMERCIAL



STOCK# 7620XXX

ROLLS PER PALLET: 32

PALLET SIZE: 132 cm x 112 cm

(52 in x 44 in)

LENGTH: 8 m (26.2 ft)

WIDTH: 1005 mm (39.6 in)

AREA: 8 m<sup>2</sup> ( 86 ft<sup>2</sup>)

THICKNESS: 4.0 mm (158 mils)

SELVAGE: 90 mm (3.5 in)

Note: All reported values are nominal.

Tough, versatile and UV resistant, let the IKO Torchflex TP-250-Cap Heat Welded Cap Sheet go to work for your next roofing project.

- DURABLE
- UV RESISTANT

## Torchflex™ TP-250-Cap

HEAT WELDED CAP SHEET

### High Strength Premium Cap Sheet

Torchflex TP-250-Cap is a heat welded cap sheet reinforced with a tough, non-woven reinforced polyester mat strengthened with select glass fiber strands.

TP-250-Cap is the top component in a heat welded roofing system.

### Features Protective Coating

Torchflex TP-250-Cap is coated top and bottom with select SBS polymers and premium asphalt to a thickness of 4.0 mm (158 mils).

### Protects Against UV Radiation

Ceramic coated mineral granules are imbedded in the top surface to provide protection against ultraviolet radiation.

### Dual Purpose

Torchflex TP-250-Cap can be used as a protective cap in the top ply of a B.U.R. system or a two-ply modified system.

# Torchflex™ TP-250-Cap

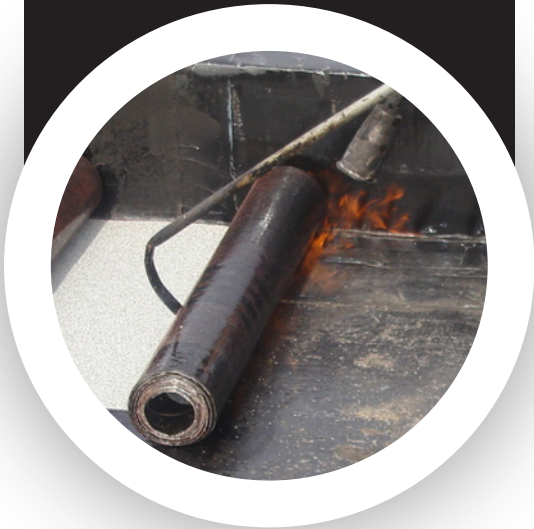
HEAT WELDED CAP SHEET



**Torchflex TP-250-Cap** satisfies the requirements of CGSB-37.56-M for Class G, Type 2 and Grade 2 materials as well as the requirements of ASTM D6164 for Type II, Grade G materials.

ISO 9001 – 2008 REGISTERED FACILITY

Please contact your IKO Technical Representative for specific slope requirements.



CHARACTERISTICS	UNITS	MEETS/ EXCEEDS	SPECIFICATION	TEST METHOD**	STANDARD LIMITS
Cold Flex:	°C (°F)	✓	ASTM D6164	ASTM D5147	MIN: -18 (0)
Strain Energy @ 23°C MD: XD:	kN/m	✓ ✓	CGSB-37.56-M	CGSB-37.56-M	MIN: 5.5*
Tensile Strength MD: XD:	kN/m (lbf/in)	✓ ✓	ASTM D6164	ASTM D5147	MIN: 17.5 (100)
Ultimate Elongation MD: XD:	%	✓ ✓	ASTM D6164	ASTM D5147	MIN: 60
Tear Strength MD: XD:	N (lbf)	✓ ✓	CGSB-37.56-M	CGSB-37.56-M	MIN: 20 (4.5)*
Tensile-Tear MD: XD:	N (lbf)	✓ ✓	ASTM D6164	ASTM D5147	MIN: 311 (70)
Lap Strength (5D @ 23°C) MD: XD:	kN/m (lbf/in)	✓ ✓	CGSB-37.56-M	CGSB-37.56-M	MIN: 4 (23)*
Granule Loss:	g	✓	ASTM D6164	ASTM D5147	MAX: 2.0
Static Puncture:	N (lbf)	✓	CGSB-37.56-M	CGSB-37.56-M	≥ 150 (34)*

\* CGSB-37.56-M revision, 9th draft, dated January 1997. \*\* Although both ASTM and CGSB have requirements for a particular test, only the more stringent is indicated. The information on this product information sheet is based upon data considered to be true and accurate, based on laboratory tests and production measurements, and is offered solely for the user's consideration, investigation and verification. Nothing contained herein is representative of a warranty or guarantee for which the manufacturer can be held legally responsible. The manufacturer does not assume any responsibility for any misrepresentation or assumptions the reader may formulate.



# IKOTherm™

COMMERCIAL ROOF INSULATION



# IKO® COMMERCIAL

Spécifiez en toute Confiance.



STOCK# 418XXXX

PALLET SIZE: 122 cm x 244 cm

(4 ft x 8 ft)

AVAILABLE THICKNESSES\*:

25 mm (1 in), 50 mm (2 in), 75 mm (3 in),

100 mm (4 in)

PIECES PER PALLET:

122 cm x 244 cm (4 ft x 8 ft)

25 mm (1 in) - 48    50 mm (2 in) - 24

75 mm (3 in) - 16    100 mm (4 in) - 12

122 cm x 122 cm (4 ft x 4 ft)

25 mm (1 in) - 96    50 mm (2 in) - 48

75 mm (3 in) - 32    100 mm (4 in) - 24

\*IKOTherm and IKOTherm Tapered are available in a full range of thicknesses upon request.

IKO's AccuCut service allows further specialty board dimensions.

Note: All reported values are nominal.

## IKOTherm

### COMMERCIAL ROOF INSULATION

#### Durable but Lightweight

Lightweight and easy to handle, IKOTherm Polyisocyanurate Foam Insulation is designed to be part of modified bitumen, built-up, or single-ply roof system.

#### Reinforced Facer

IKOTherm is composed of a select Kraft paper reinforced with glass fiber strands for high strength and excellent absorption for both hot mopping and adhesive attachment methods. The product also performs well with mechanical fasteners.

#### Excellent R-Value

IKOTherm is a rigid, polyisocyanurate foam insulation with high thermal properties, which can provide outstanding insulation protection and help to reduce heating and cooling costs.

#### Versatile

IKOTherm is available in two board sizes and a range of thicknesses to meet a variety of insulation needs.

- EXTRA TOUGH
- OUTSTANDING R-VALUE



**IKOTherm** Polyisocyanurate Foam Insulation is produced according to the requirements of CAN/ULC S-704 for Type 2, Class 3 materials, and ASTM C1289 Type II, Class 1, Grade 2. This product is FM and UL approved.

Please contact your IKO Technical Representative for specific slope requirements.

CHARACTERISTICS	UNITS	MEETS/ EXCEEDS	TEST METHOD	STANDARD LIMITS
Length Tolerance:	mm (in)	± 4 (± 0.16)	ASTM C303	+ 6 (+ 0.25) - 4 (- 0.16)
Width Tolerance:	mm (in)	± 2 (± 0.08)	ASTM C303	+ 4 (+ 0.16) - 2 (- 0.08)
Dimensional Stability(MD/XD) At -29°C: At 80°C: At 70°C, 97% R.H.:	%	-0.02/-0.03 -0.02/-0.17 0.30/0.80	ASTM D2126	max: ± 2 max: ± 2 max: ± 2
Water Vapour Permeance:	ng/Pa·s·m <sup>2</sup>	✓	ASTM E96	>60
Water Absorption:	% by Vol.	✓	ASTM D2842	max: 3.5
Compressive Strength*:	kPa (psi)	✓	ASTM D1621	min: 140 (20)
Flexural Strength MD: XD:	kPa (psi)	✓ ✓	ASTM C203	min: 275 (39.3)
Long Term Thermal Resistance (LTTR) R-Value:  Thickness 25 mm (1.0 in): 50 mm (2.0 in): 75 mm (3.0 in): 100 mm (4.0 in):	m <sup>2</sup> .K/W (h.ft <sup>2</sup> . °F/Btu)	1.00 (5.7) 2.01 (11.4) 3.06 (17.4) 4.16 (23.6)	CAN/ULC-S770	—

\* Tested on cured sample, using chord modulus at 10% deformation. 172 kpa (25 psi) product available by special request, which would conform to ASTM C1289 Grade 3 requirements. See also Material Safety Data Sheet - MSDS #1511 or MSDS #1911. All values shown are approximate. The information on this sheet is based on data considered to be true and accurate based on periodic internal testing and production measurements at time of manufacture. The information is offered solely for the user's consideration, investigation and verification, and is subject to change without notice. Nothing contained herein constitutes or represents a warranty or guarantee for which the manufacturer can be held legally responsible. IKO assumes no responsibility for errors that may appear in this document.