

No.	Date	Revision
1	2020-10-29	REVISIONS, PER SITE DISCUSSION
0	2020-09-22	FOR REVIEW

- LEGEND:
- ⊗ HEAT DETECTOR
  - ⊙ SMOKE DETECTOR
  - ⊕ DUCT SMOKE DETECTOR
  - PULL STATION
  - ▽ FIRE ALARM HORN/STROBE

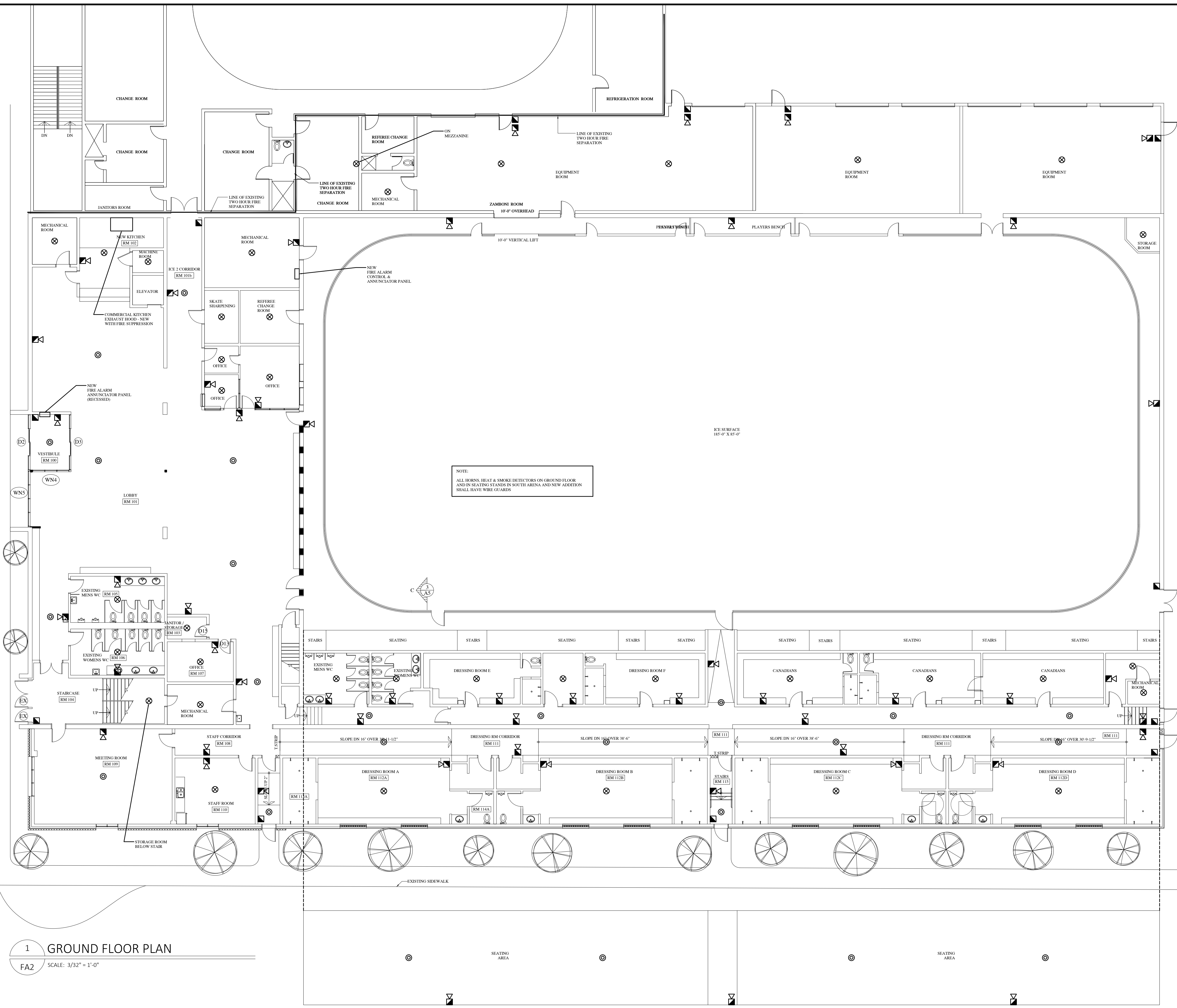
Client:  
**LARRY GAINES**  
ARCHITECT  
Almonte, ON

Project:  
**CARLETON PLACE**  
ARENA ADDITION  
Carleton Place, ON

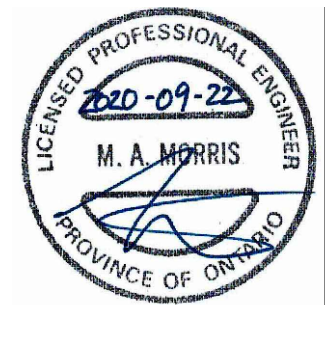
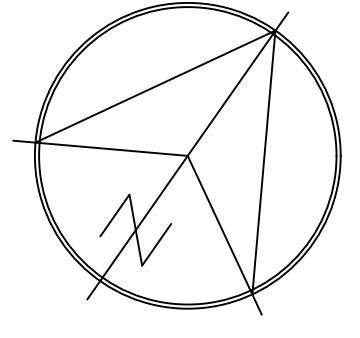
Drawing:  
**Fire Alarm System**

Design:	M.MORRIS
Drawn:	A.M.
Date:	SEP 2020
Project:	205
Scale:	AS SHOWN

**FA2**



**1 GROUND FLOOR PLAN**  
FA2 SCALE: 3/32" = 1'-0"



No.	Date	Revision
1	2020-10-29	REVISIONS, PER SITE DISCUSSION
0	2020-09-22	FOR REVIEW

- LEGEND:**
- ⊗ HEAT DETECTOR
  - ⊙ SMOKE DETECTOR
  - ⊕ DUCT SMOKE DETECTOR
  - ▣ PULL STATION
  - ▽ FIRE ALARM HORN/STROBE

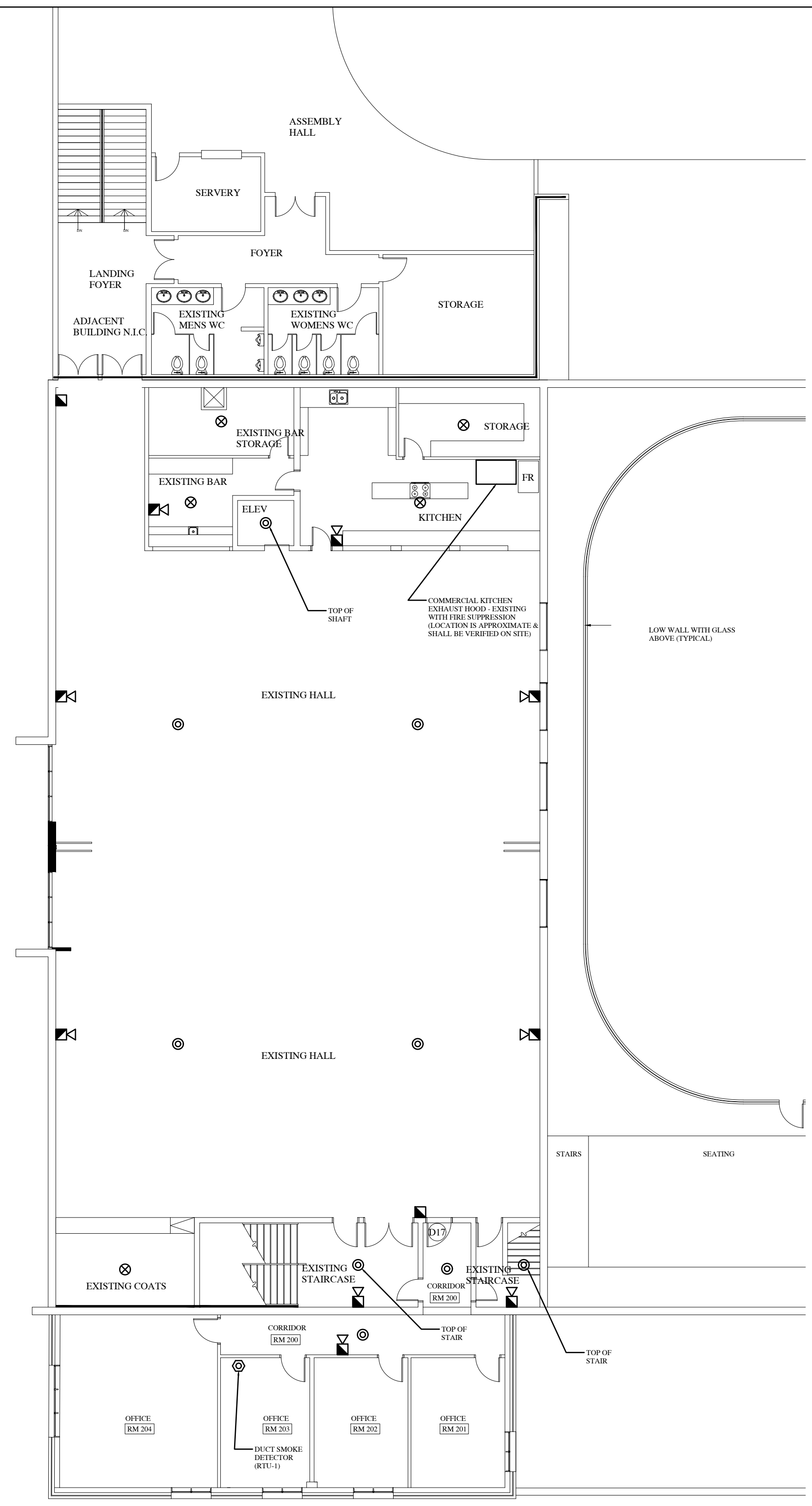
Client:  
**LARRY GAINES**  
ARCHITECT  
Almonte, ON

Project:  
**CARLETON PLACE**  
ARENA ADDITION  
Carleton Place, ON

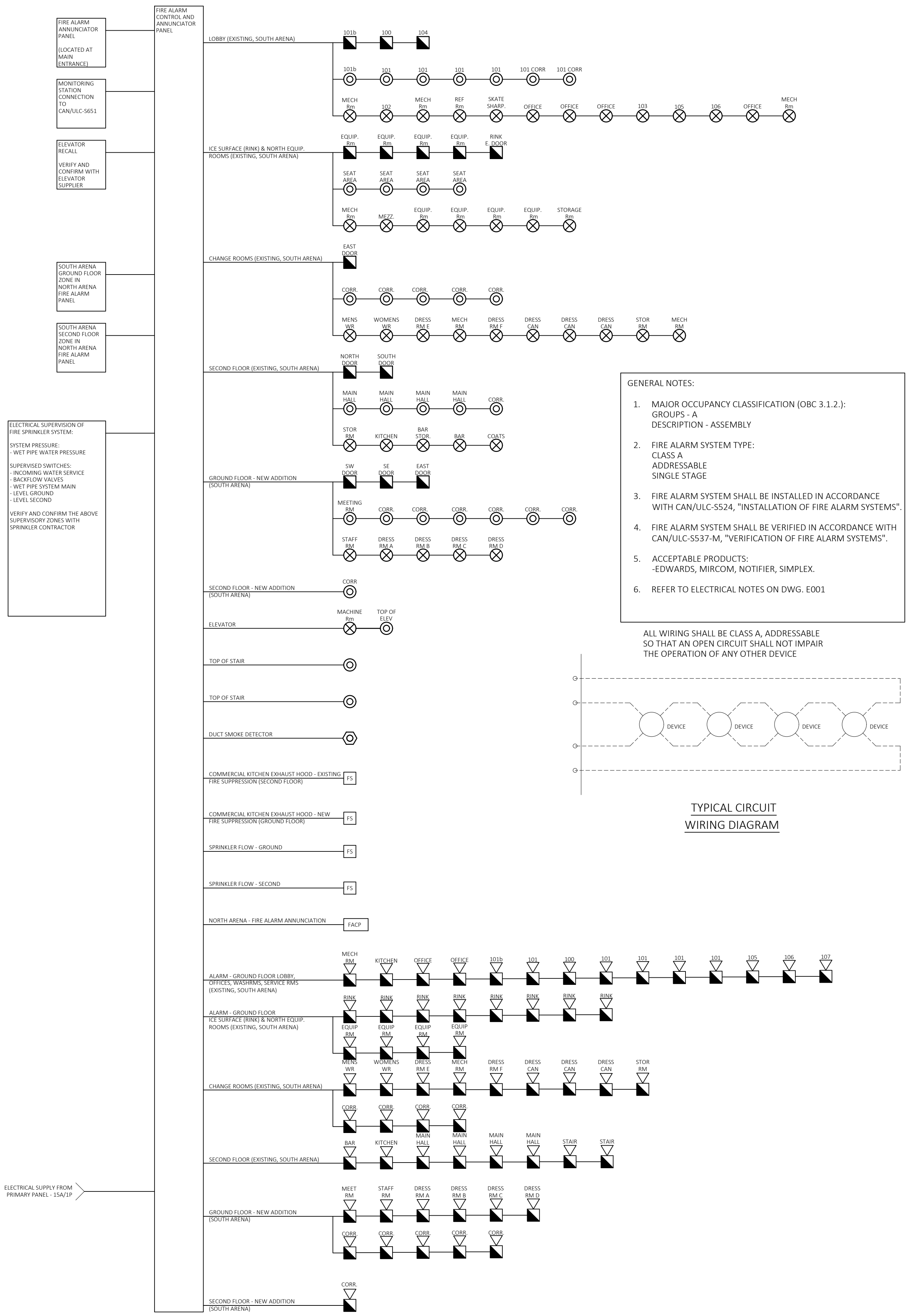
Drawing:  
**Fire Alarm System**

Design:	M.MORRIS
Drawn:	A.M.
Date:	SEP 2020
Project:	205
Scale:	AS SHOWN

**FA1**

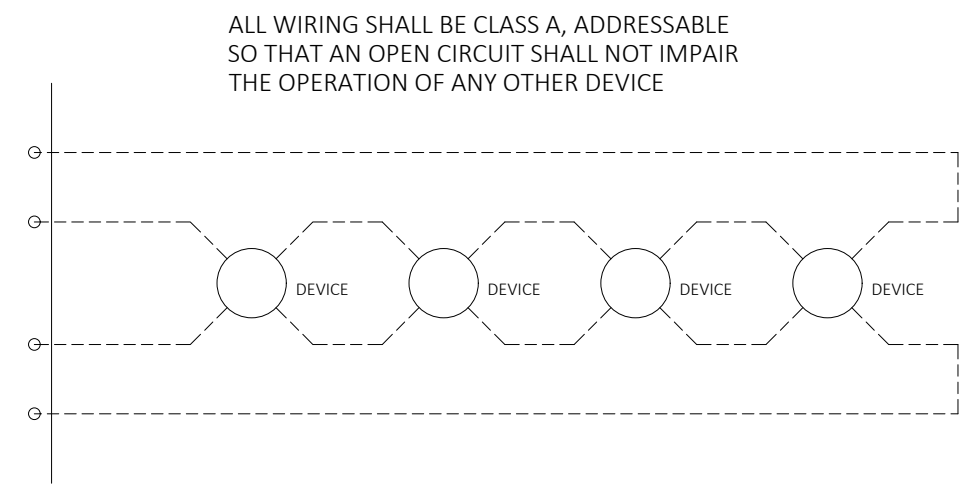


2 SECOND FLOOR PLAN  
FA1 SCALE: 3/32" = 1'-0"



1 FIRE ALARM - SCHEMATIC DIAGRAM  
FA1 NTS

- GENERAL NOTES:**
- MAJOR OCCUPANCY CLASSIFICATION (OBC 3.1.2.): GROUPS - A DESCRIPTION - ASSEMBLY
  - FIRE ALARM SYSTEM TYPE: CLASS A ADDRESSABLE SINGLE STAGE
  - FIRE ALARM SYSTEM SHALL BE INSTALLED IN ACCORDANCE WITH CAN/ULC-5524, "INSTALLATION OF FIRE ALARM SYSTEMS".
  - FIRE ALARM SYSTEM SHALL BE VERIFIED IN ACCORDANCE WITH CAN/ULC-5537-M, "VERIFICATION OF FIRE ALARM SYSTEMS".
  - ACCEPTABLE PRODUCTS: EDWARDS, MIRCOM, NOTIFIER, SIMPLEX.
  - REFER TO ELECTRICAL NOTES ON DWG. E001



TYPICAL CIRCUIT WIRING DIAGRAM

ELECTRICAL SUPERVISION OF FIRE SPRINKLER SYSTEM.  
SYSTEM PRESSURE: WET PIPE WATER PRESSURE  
SUPERVISED SWITCHES: INCOMING WATER SERVICE BACKFLOW VALVES, WET PIPE SYSTEM MAIN LEVEL GROUND - LEVEL SECOND  
VERIFY AND CONFIRM THE ABOVE SUPERVISORY ZONES WITH SPRINKLER CONTRACTOR.

ALL WIRING SHALL BE CLASS A, ADDRESSABLE SO THAT AN OPEN CIRCUIT SHALL NOT IMPAIR THE OPERATION OF ANY OTHER DEVICE