

SITE INSTRUCTION NO. ME-07 MECHANICAL AND ELECTRICAL

Project Name: Carleton Place Arena
75 Neelin Street
Carleton Place, Ontario

Project No.: 205

Date: 2020 October 29

MECHANICAL

M7.1 SKETCH MSK-1 – REVISION 1:

Indicates new location of Water Storage Tank and approximate location of new Floor Drain in existing Mechanical Room.

ELECTRICAL

E7.1 SKETCH MSK-1 – REVISION 1:

Indicates new location of Electrical Panel and Transformer.

E7.2 DRAWINGS FA1 & FA2 – REVISION 1:

.1 The following items have been deleted from the list in the M&E Addendum:

.1 South Arena Lobby:

1 – Smoke Detector in Lobby;

2 – Horns/Strobes in Lobby;

.2 South Arena Rink:

1 – Heat Detector in north Service and Storage Rooms;

2 – Horns/Strobes in north Service Rooms;

.3 South Arena Change Rooms:

1 – Smoke Detectors in Corridor.

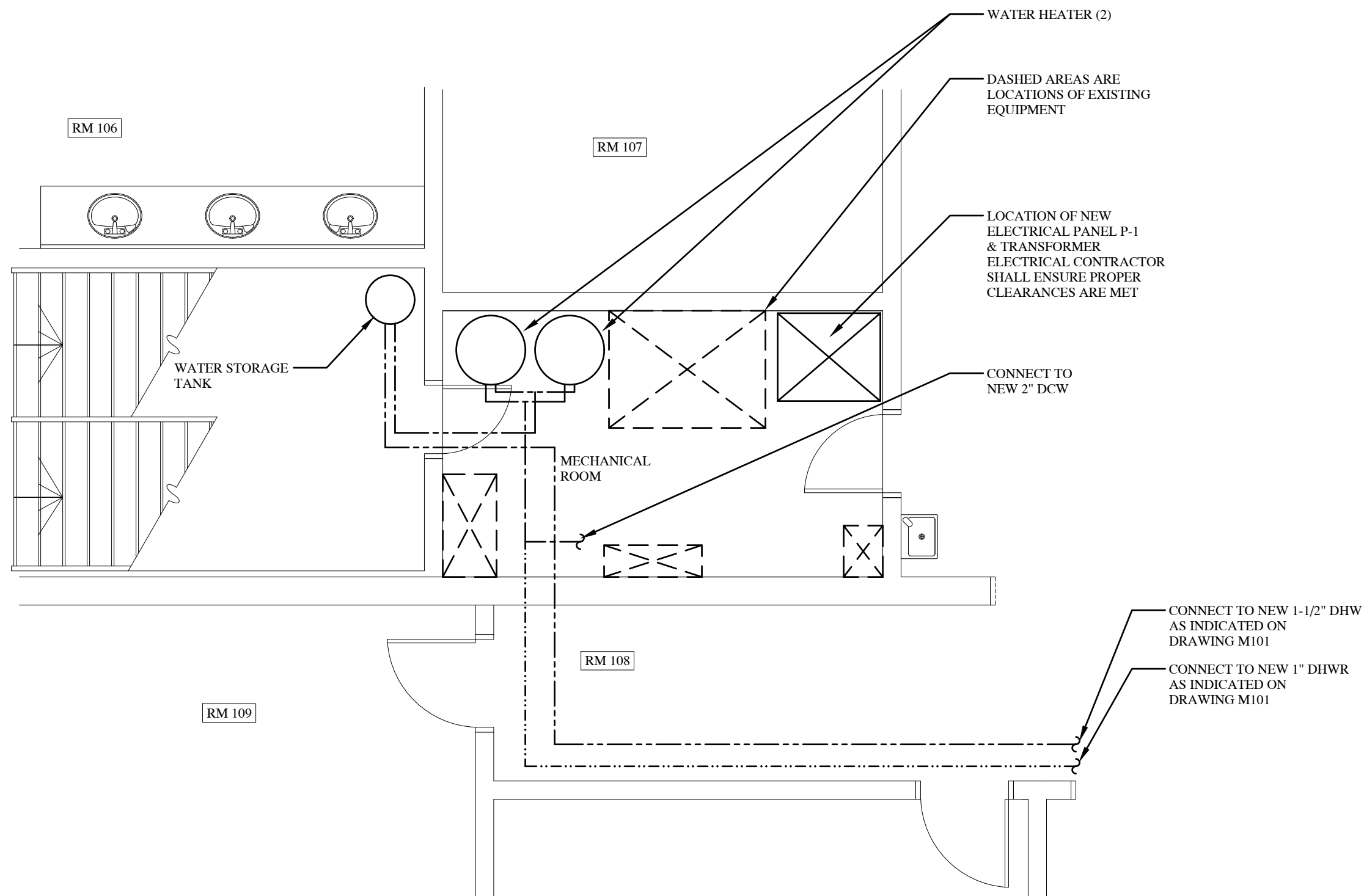
.2 The following items have been added to the list in the M&E Addendum:

.1 South Arena Rink:

1 – Pull station at exterior door;

Attachment: Sketch MSK1
Drawings FA1 & FA2

M. Morris P.Eng.



No.	Date	Revision
1	2020-10-29	REVISED, PER SITE DISCUSSION
0	2020-10-01	FOR REVIEW

Client:
LARRY GAINES
ARCHITECT
Almonte, ON

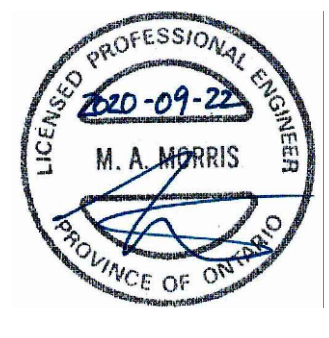
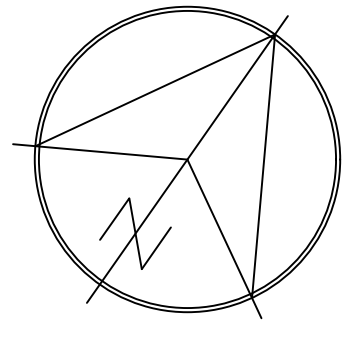
Project:
CARLETON PLACE
ARENA ADDITION
Carleton Place, ON

Drawing:
WATER HEATER
RELOCATION

Design: M.MORRIS
Drawn: A.M.
Date: SEP 2020
Project: 205
Scale: AS SHOWN

1 MECHANICAL ROOM (EXISTING)
MSK1 SCALE: 1/4" = 1'-0"

MSK1



No.	Date	Revision
1	2020-10-29	REVISIONS, PER SITE DISCUSSION
0	2020-09-22	FOR REVIEW

- LEGEND:
- ⊗ HEAT DETECTOR
 - ⊙ SMOKE DETECTOR
 - ⊕ DUCT SMOKE DETECTOR
 - PULL STATION
 - ▽ FIRE ALARM HORN/STROBE

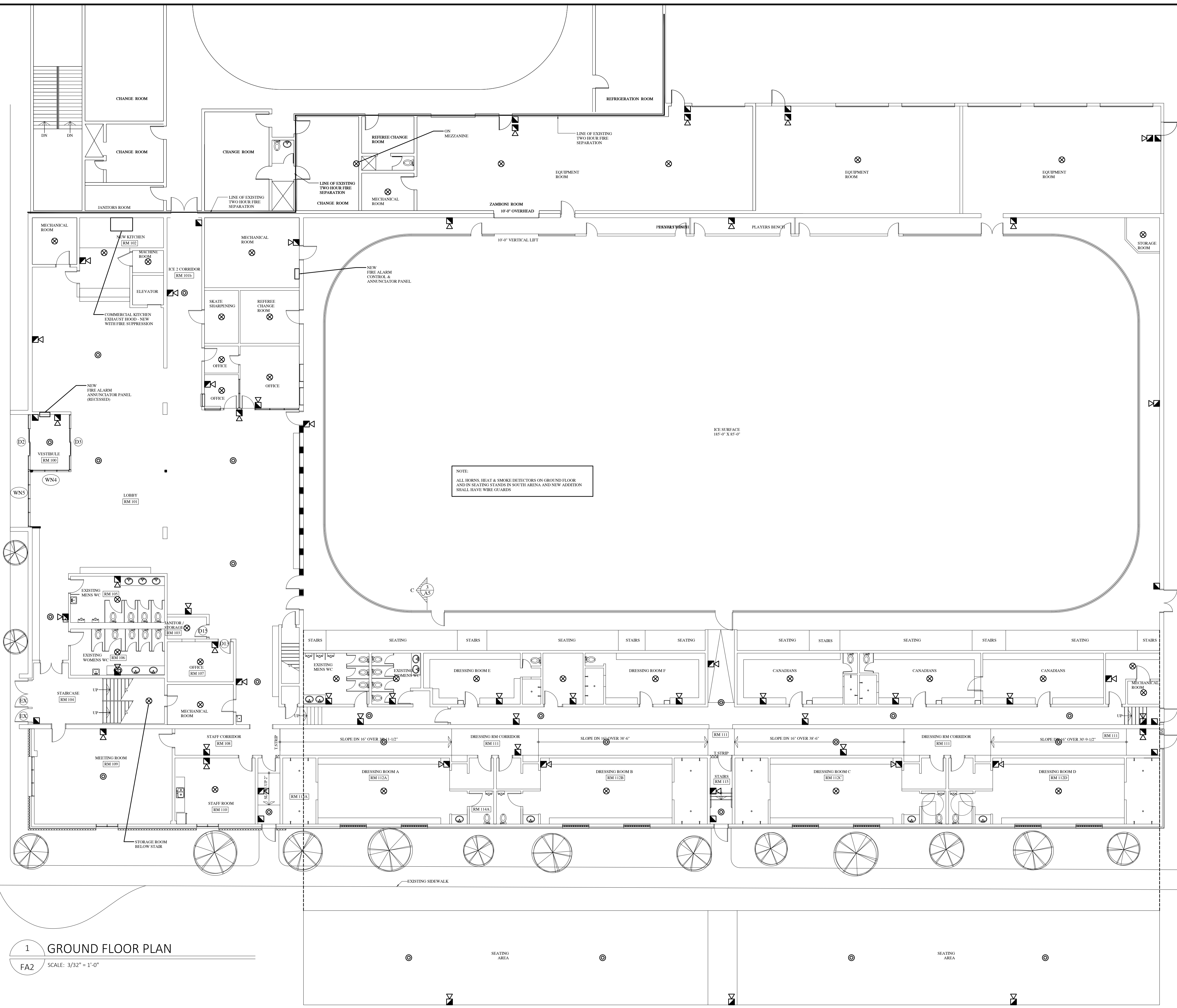
Client:
LARRY GAINES
ARCHITECT
Almonte, ON

Project:
CARLETON PLACE
ARENA ADDITION
Carleton Place, ON

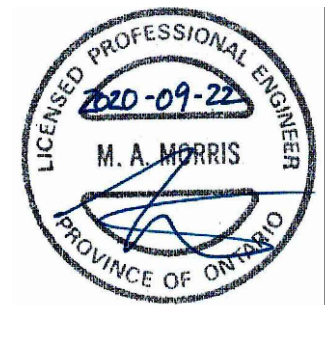
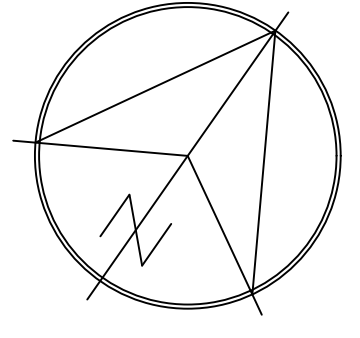
Drawing:
Fire Alarm System

Design:	M.MORRIS
Drawn:	A.M.
Date:	SEP 2020
Project:	205
Scale:	AS SHOWN

FA2



1 GROUND FLOOR PLAN
FA2 SCALE: 3/32" = 1'-0"



No.	Date	Revision
1	2020-10-29	REVISIONS, PER SITE DISCUSSION
0	2020-09-22	FOR REVIEW

- LEGEND:**
- ⊗ HEAT DETECTOR
 - ⊙ SMOKE DETECTOR
 - ⊕ DUCT SMOKE DETECTOR
 - ▣ PULL STATION
 - ▽ FIRE ALARM HORN/STROBE

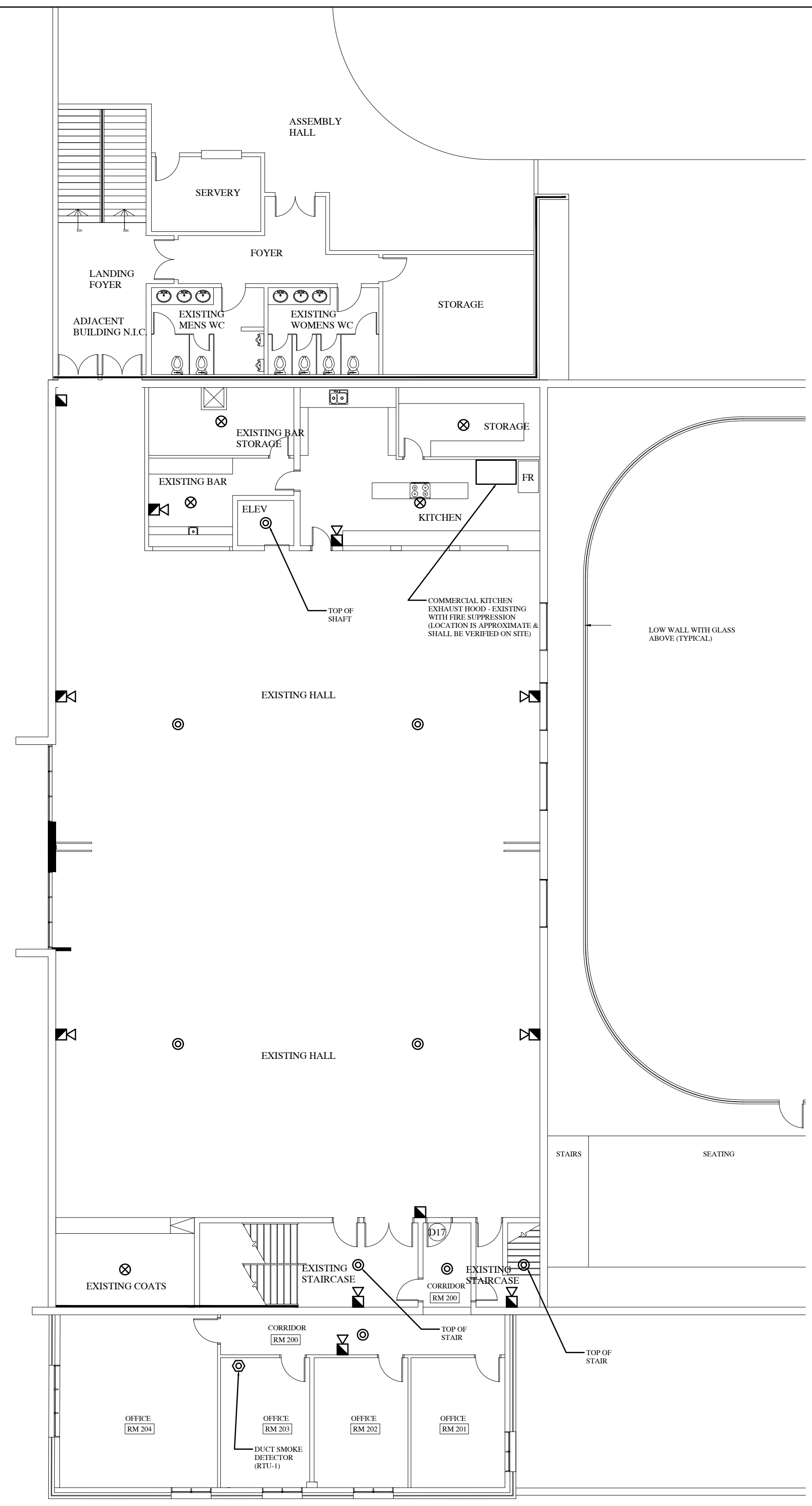
Client:
LARRY GAINES
ARCHITECT
Almonte, ON

Project:
CARLETON PLACE
ARENA ADDITION
Carleton Place, ON

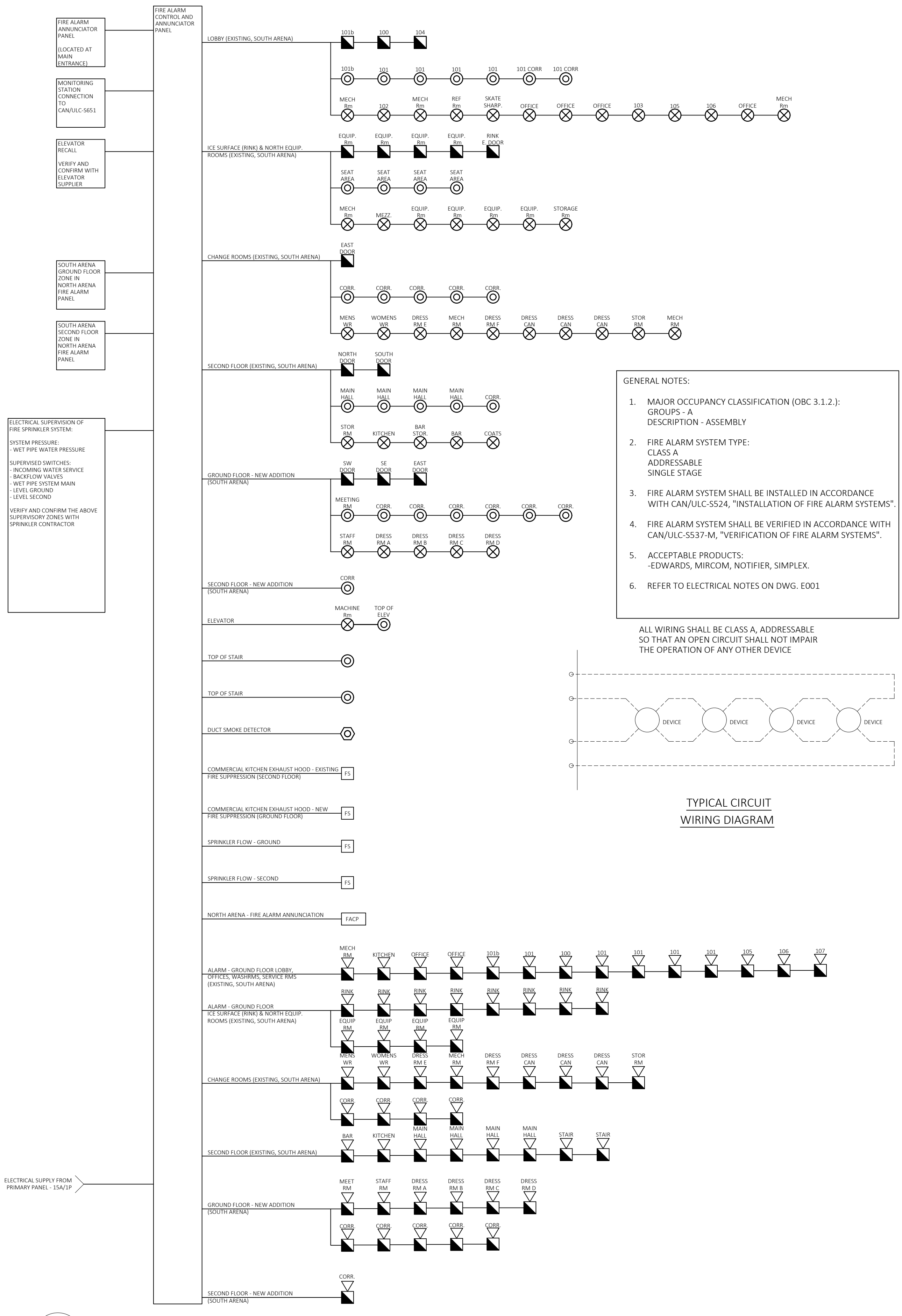
Drawing:
Fire Alarm System

Design:	M.MORRIS
Drawn:	A.M.
Date:	SEP 2020
Project:	205
Scale:	AS SHOWN

FA1

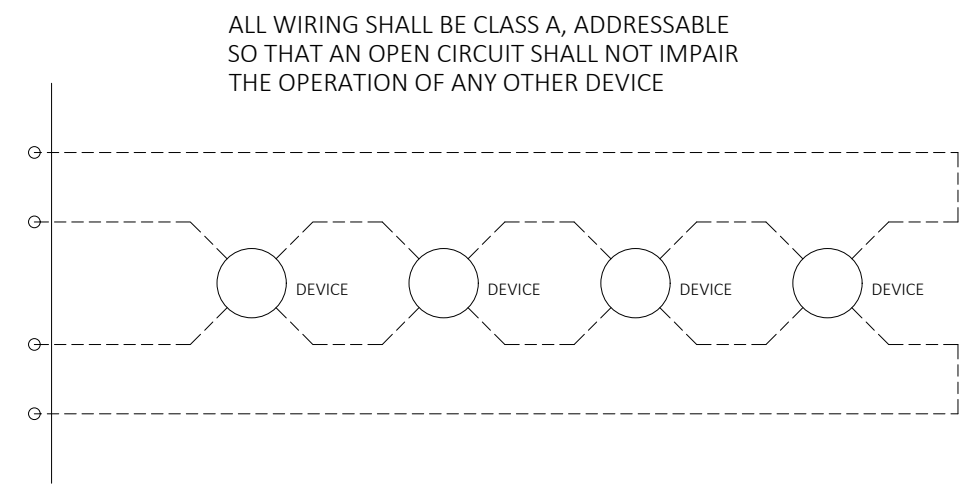


2 SECOND FLOOR PLAN
FA1 SCALE: 3/32" = 1'-0"



1 FIRE ALARM - SCHEMATIC DIAGRAM
FA1 NTS

- GENERAL NOTES:**
- MAJOR OCCUPANCY CLASSIFICATION (OBC 3.1.2.): GROUPS - A DESCRIPTION - ASSEMBLY
 - FIRE ALARM SYSTEM TYPE: CLASS A ADDRESSABLE SINGLE STAGE
 - FIRE ALARM SYSTEM SHALL BE INSTALLED IN ACCORDANCE WITH CAN/ULC-5524, "INSTALLATION OF FIRE ALARM SYSTEMS".
 - FIRE ALARM SYSTEM SHALL BE VERIFIED IN ACCORDANCE WITH CAN/ULC-5537-M, "VERIFICATION OF FIRE ALARM SYSTEMS".
 - ACCEPTABLE PRODUCTS: EDWARDS, MIRCOM, NOTIFIER, SIMPLEX.
 - REFER TO ELECTRICAL NOTES ON DWG. E001



TYPICAL CIRCUIT WIRING DIAGRAM

ELECTRICAL SUPERVISION OF FIRE SPRINKLER SYSTEM.
SYSTEM PRESSURE: WET PIPE WATER PRESSURE
SUPERVISED SWITCHES: INCOMING WATER SERVICE BACKFLOW VALVES WET PIPE SYSTEM MAIN LEVEL GROUND LEVEL SECOND
VERIFY AND CONFIRM THE ABOVE SUPERVISORY ZONES WITH SPRINKLER CONTRACTOR.

ALL WIRING SHALL BE CLASS A, ADDRESSABLE SO THAT AN OPEN CIRCUIT SHALL NOT IMPAIR THE OPERATION OF ANY OTHER DEVICE