

**SITE INSTRUCTION NO. ME-13**  
**MECHANICAL AND ELECTRICAL**

**Project Name:** Carleton Place Arena  
75 Neelin Street  
Carleton Place, Ontario

**Project No.:** 205  
**Date:** 2021 February 17

---

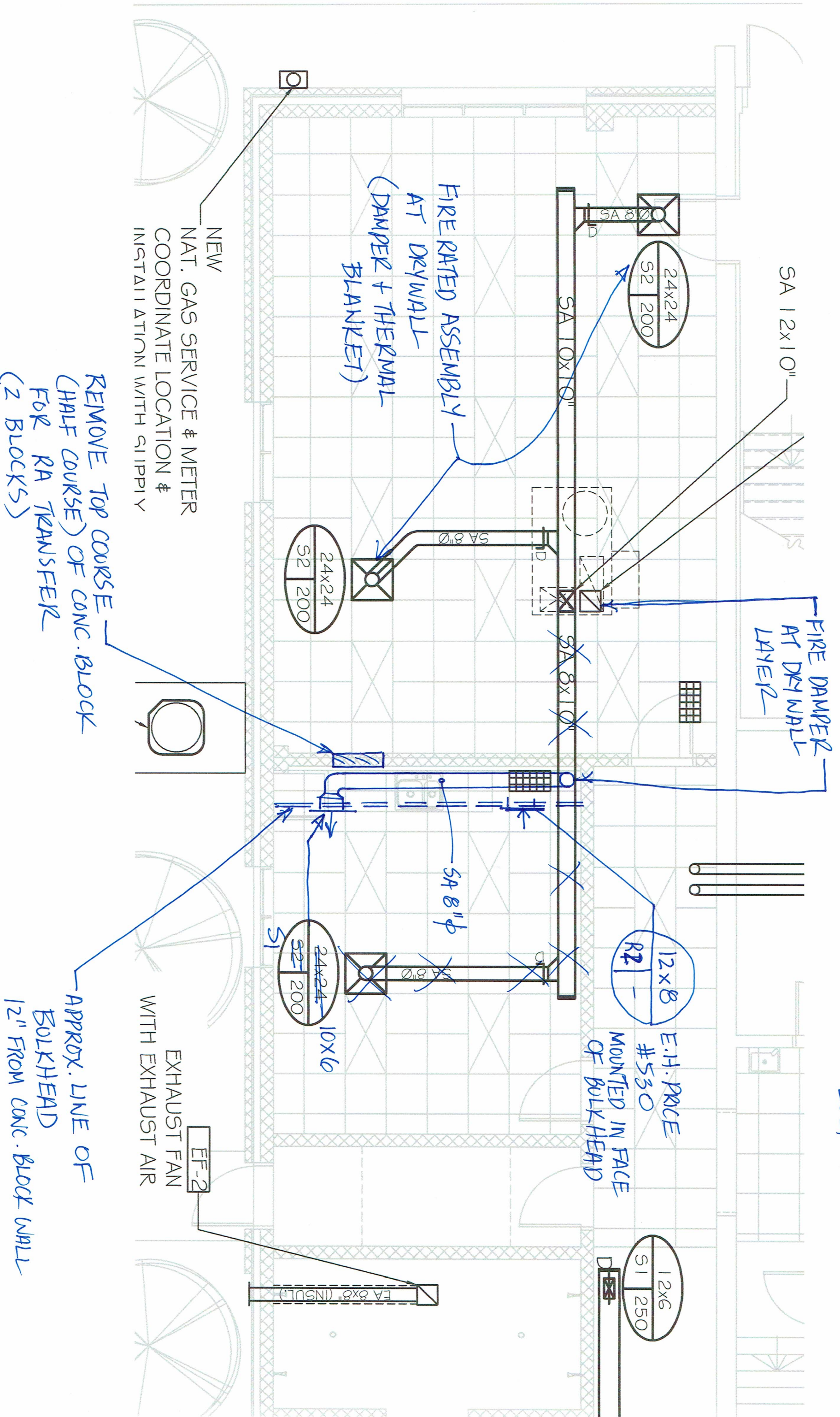
**MECHANICAL:**

M13.1 Supply & Return Air to Ground Floor Staff Room:

Supply and install Supply Air & Return Air duct to Ground Floor Staff Room, with fired dampers and fire-rated assemblies, in accordance with the attached sketch (1 sketch).

M. Morris P.Eng.

M. MORRIS P. ENG.  
2021-02-17



NEW  
NAT. GAS SERVICE & METER  
COORDINATE LOCATION &  
INSTALLATION WITH GILIPPY

FIRE RATED ASSEMBLY  
AT DRYWALL  
(DAMPER + THERMAL  
BLANKET)

FIRE DAMPER  
AT DRYWALL  
LAYER

12x8  
E.H. PRICE  
#530  
MOUNTED IN FACE  
OF BULKHEAD

REMOVE TOP COURSE  
(HALF COURSE) OF CONC. BLOCK  
FOR RA TRANSFER  
(2 BLOCKS)

APPROX. LINE OF  
BULKHEAD  
12" FROM CONC. BLOCK WALL

EF-2  
EXHAUST FAN  
WITH EXHAUST AIR