

LARRY GAINES • ARCHITECT

Old Town Hall
14 Bridge Street, PO 706
Almonte, Ontario
K0A 1A0

T: 613-256-3630
gaines@bellnet.ca

Site Instruction #8

To: Talco Building Innovations Ltd.
4728 Bank Street, Suite A
Ottawa, Ontario, K1T 3W7

Project: Carleton Place Arena
Neelin Street

Date: February 18, 2021

Site instructions are issued only for the purpose of recording any clarification or interpretation of the contract documents or giving direction on problems resulting from field conditions. These instructions are subject to the provisions of the contract documents and unless stated herein and specifically co-authorized by the Client, will not affect the contract. Should the contractor require a change in the contract price or project schedule, he shall submit to the architect within ten (10) days of the date hereof, an itemized proposal. If the proposal is accepted by the client, this site instruction will be superseded by a Change Order

REFERENCES:

CIR #39 Question 2

GENERAL:

- .1 The intention is to have surface mounted conduit, receptacle and device

PER: Larry Gaines
Architect



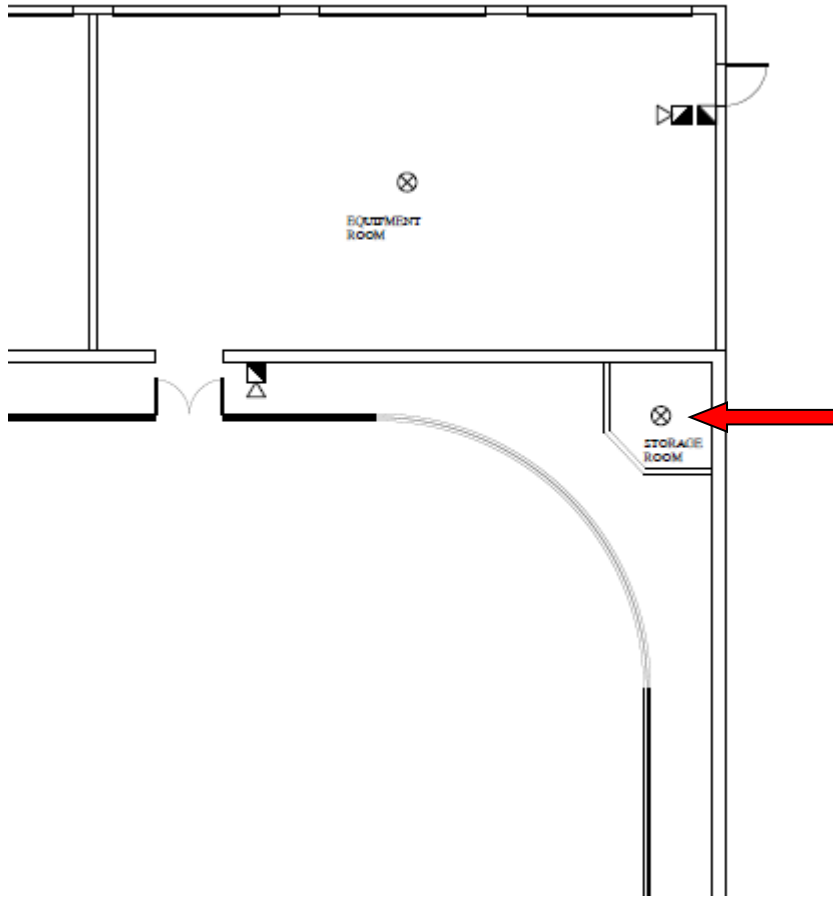
**CARLETON PLACE ARENA
ADDITION AND RENOVATIONS
75 Neelin Street Carleton Place, Ontario**

TAL-CO Building Innovations Limited
4728 Bank Street, Suite A
Gloucester, Ontario K1T 3W7
Tel: 613-821-3959
Fax: 613-821-2938

Issue date: Jan- 29 - 2021
Revision date:
Revision #:

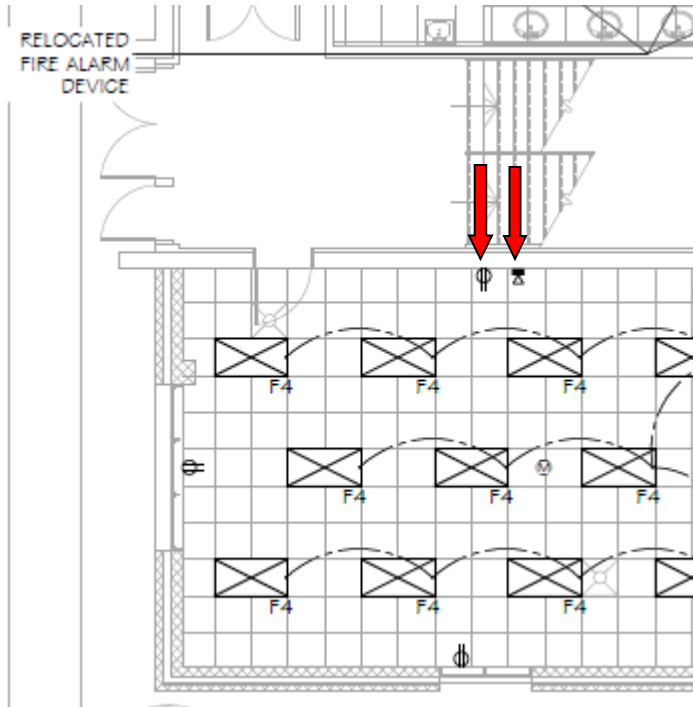
**CIR # 39
Fire Alarm and Electrical**

1. On FA 2 shows a heat detector in the score keeping box labelled as "Storage Area" see sketch and picture below. This is a two-story structure. Is the intent to have only one device or is there a requirement for each room to have its own dedicated heat detector device? If is not required on each room, which room are we to install the device?
Please advise.



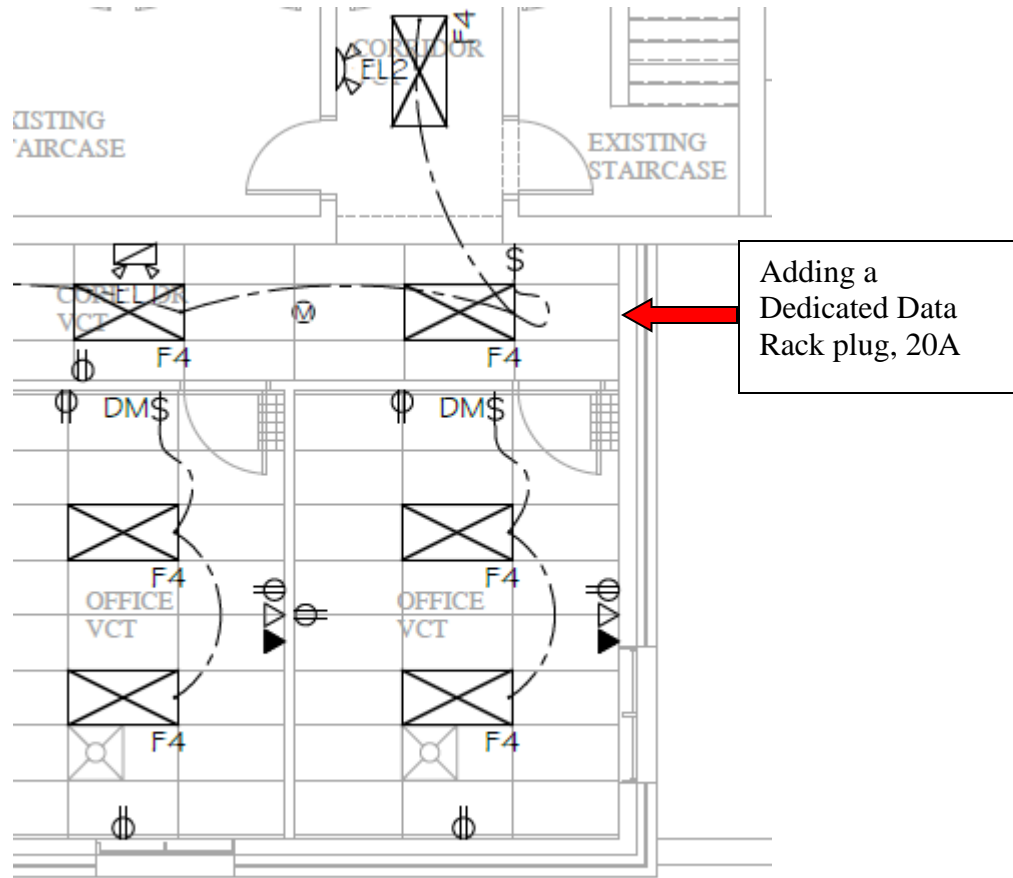


2. E-102, Electrical Receptacle and FA horn conduits and electrical box on existing wall cannot be inside the wall. See sketch below.
Is the intent to have a surface mounted electrical conduit, receptacle, and FA horn?
Please advise.



3. L1-Outdoor lighting on E-102 does not specify a dedicated circuit on P1-E-002.
Please provide Site instruction.

4. As requested by the Client, adding a Dedicated Data Rack plug, 20A, Installation shall be a surface mounted as discussed on site. See sketch below on requested location.
Please Provide a site instruction.



LOAD UNIT

End of CIR No. 39