

PART OF LOT 10
CONCESSION 5
TOWNSHIP OF RUSSELL
COUNTY OF RUSSELL

Prepared by Annis, O'Sullivan, Vollebakk Ltd.
Field Work Completed April 28, 2015.

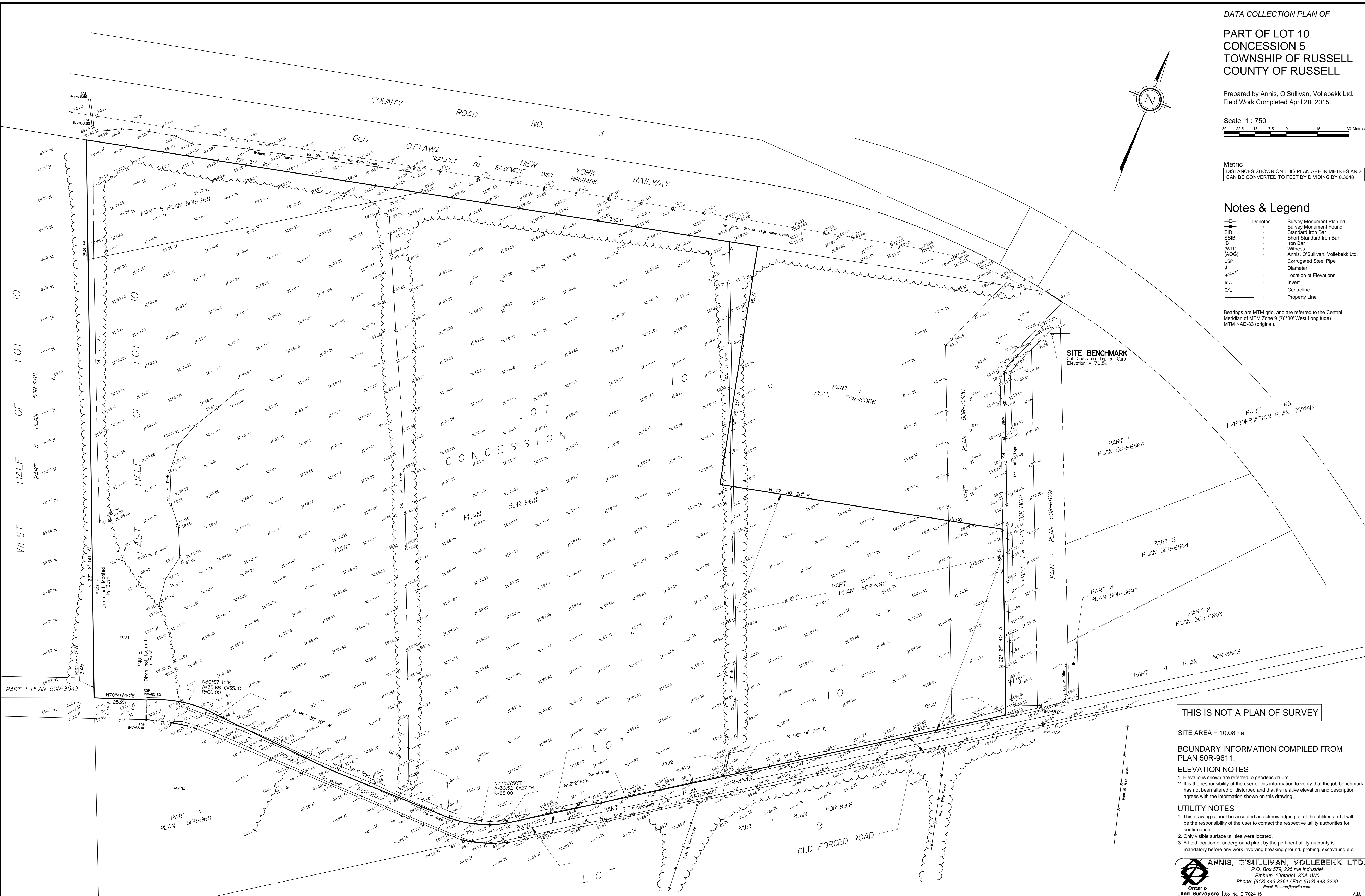
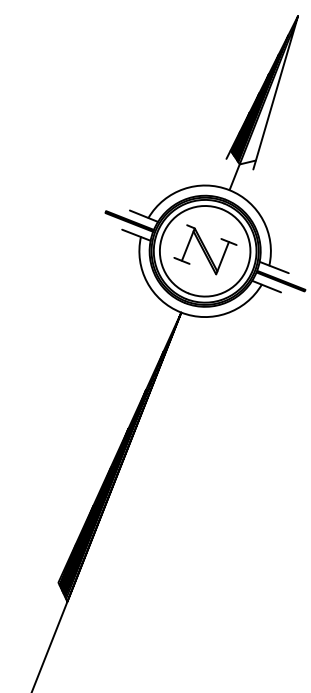
Scale 1 : 750
0 2.5 5 7.5 10 15 20 Metres

Metric
DISTANCES SHOWN ON THIS PLAN ARE IN METRES AND
CAN BE CONVERTED TO FEET BY DIVIDING BY 0.3048

Notes & Legend

—□—	Denotes	Survey Monument Planted
—■—		Survey Monument Found
—S—		Standard Iron Bar
—SS—		Short Standard Iron Bar
—IB—		Iron Bar
—(WIT)—		Witness
—(AOC)—		Annis, O'Sullivan, Vollebakk Ltd.
—CSP—		Corrugated Steel Pipe
—φ—		Diameter
+ 68.00		Location of Elevations
Inv.		Invert
CL		Centreline
—		Property Line

Bearings are MTM grid, and are referred to the Central Meridian of MTM Zone 9 (76°30' West Longitude) MTM NAD-83 (original).



THIS IS NOT A PLAN OF SURVEY

SITE AREA = 10.08 ha

BOUNDARY INFORMATION COMPILED FROM
PLAN 50R-9611.

ELEVATION NOTES

1. Elevations shown are referred to geodetic datum.
2. It is the responsibility of the user of this information to verify that the job benchmark has not been altered or disturbed and that its relative elevation and description agrees with the information shown on this drawing.

UTILITY NOTES

1. This drawing cannot be accepted as acknowledging all of the utilities and it will be the responsibility of the user to contact the respective utility authorities for confirmation.
2. Only visible surface utilities were located.
3. A field location of underground plant by the pertinent utility authority is mandatory before any work involving breaking, ground, probing, excavating etc.

ANNIS, O'SULLIVAN, VOLLEBEKK LTD.
P.O. Box 579, 225 rue Industrielle
Embrun, (Ontario), K0A 1W0
Phone: (613) 443-3364 / Fax: (613) 443-3229
Email: Embrun@annv.com

Ontario
Land Surveyors (Reg. No. E-7024-15)