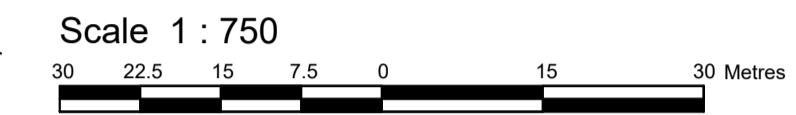


DATA COLLECTION PLAN OF
**PART OF LOT 10
 CONCESSION 5
 TOWNSHIP OF RUSSELL
 COUNTY OF RUSSELL**

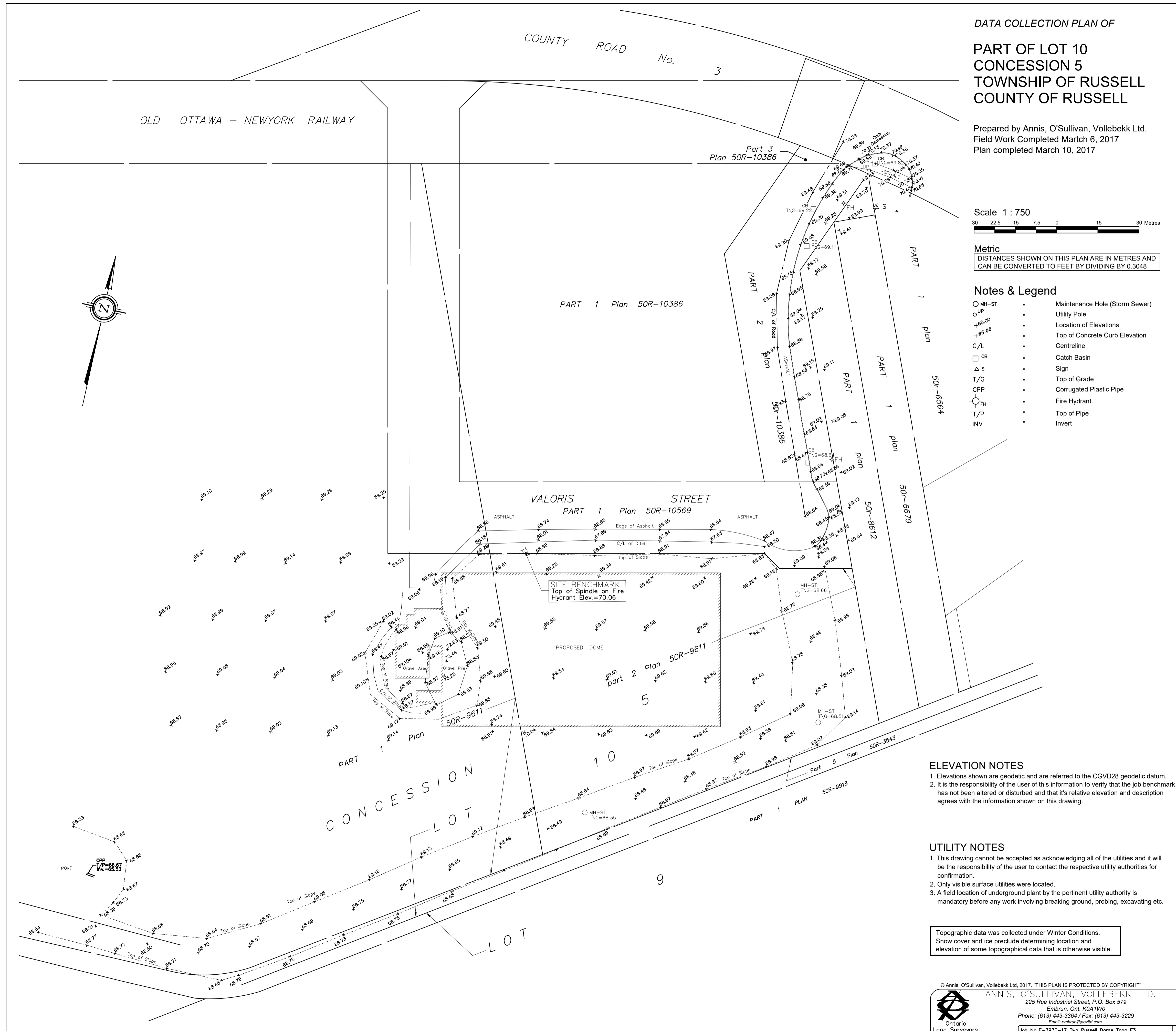
Prepared by Annis, O'Sullivan, Vollebek Ltd.
 Field Work Completed March 6, 2017
 Plan completed March 10, 2017



Metric
 DISTANCES SHOWN ON THIS PLAN ARE IN METRES AND
 CAN BE CONVERTED TO FEET BY DIVIDING BY 0.3048

Notes & Legend

- MH-ST " Maintenance Hole (Storm Sewer)
- UP " Utility Pole
- +65.00 " Location of Elevations
- +65.00 " Top of Concrete Curb Elevation
- C/L " Centreline
- CB " Catch Basin
- △ s " Sign
- T/G " Top of Grade
- CPP " Corrugated Plastic Pipe
- FH " Fire Hydrant
- T/P " Top of Pipe
- INV " Invert



ELEVATION NOTES

1. Elevations shown are geodetic and are referred to the CGVD28 geodetic datum.
2. It is the responsibility of the user of this information to verify that the job benchmark has not been altered or disturbed and that its relative elevation and description agrees with the information shown on this drawing.

UTILITY NOTES

1. This drawing cannot be accepted as acknowledging all of the utilities and it will be the responsibility of the user to contact the respective utility authorities for confirmation.
2. Only visible surface utilities were located.
3. A field location of underground plant by the pertinent utility authority is mandatory before any work involving breaking ground, probing, excavating etc.

Topographic data was collected under Winter Conditions.
 Snow cover and ice preclude determining location and elevation of some topographical data that is otherwise visible.