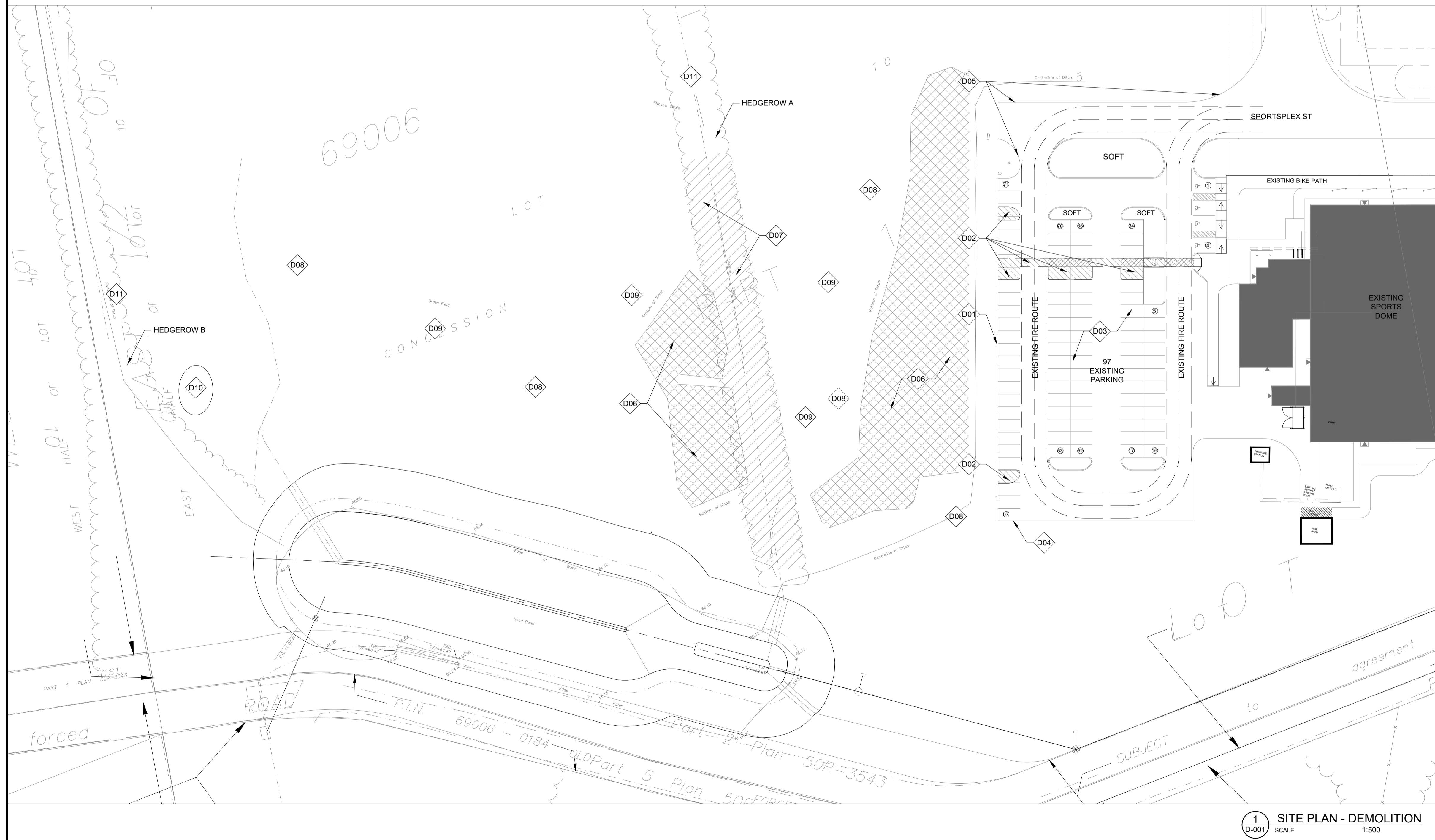
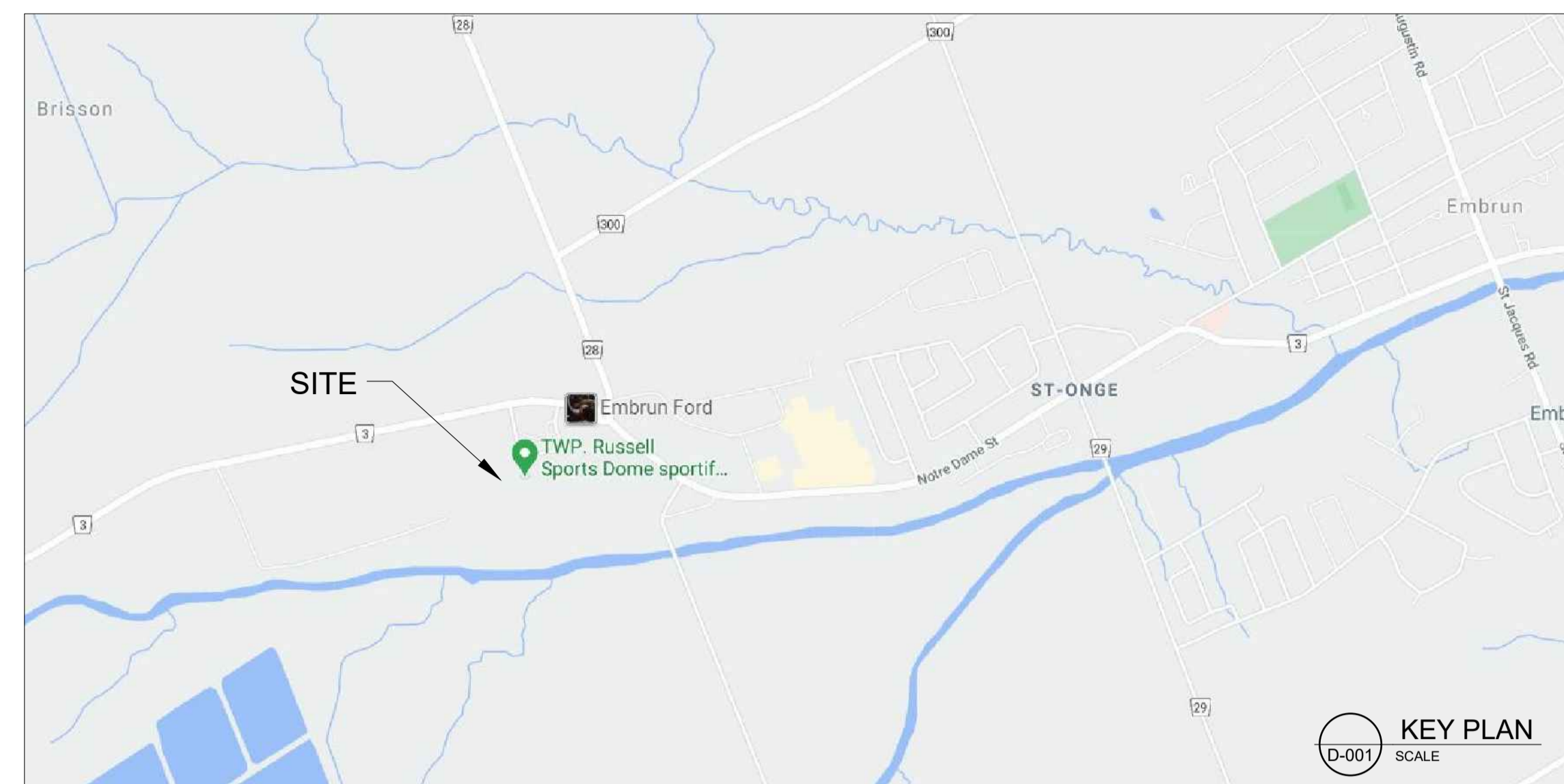


- DEMOLITION NOTES**
- D01 REMOVE EXISTING CONCRETE CURB
 - D02 REMOVE EXISTING ASPHALT
 - D03 EXISTING PARKING LOT TO REMAIN
 - D04 EXISTING CURB TO REMAIN
 - D05 EXISTING ASPHALT EDGE
 - D06 EXISTING STOCKPILE TO BE RELOCATED TO APPROVED LOCATION ON SITE
 - D07 REMOVE EXISTING HEDGEROW. FOLLOW PROVINCIAL REGULATIONS FOR REMOVAL OF VEGETATION (E.G. DURING BIRD NESTING SEASON)
 - D08 STRIP AND GRUB AS REQUIRED WITHIN CONTRACT LIMITS
 - D09 EXCAVATE AND REMOVE EXISTING MATERIAL FOR PLACEMENT OF BASES FOR PARK AMENITIES AND PATHWAYS. EXCAVATED MATERIAL TO BE RELOCATED TO APPROVED LOCATION ON SITE
 - D10 REMOVE STOCKPILE OF BRANCHES / TREE TRUNKS
 - D11 PROTECT AND RETAIN EXISTING VEGETATION.

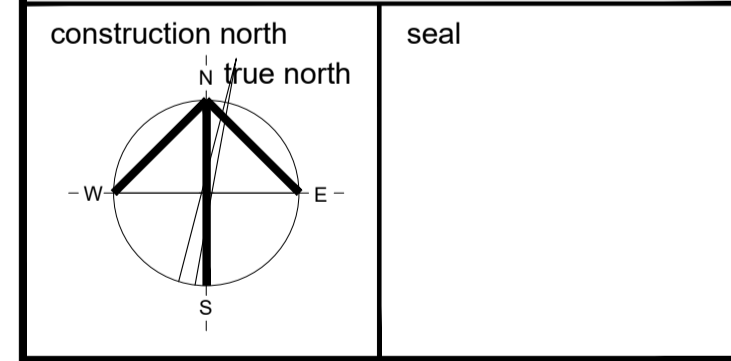
- EXISTING VEGETATION NOTES**
- HEDGEROW A**
HEDGEROW A CONSISTS OF YOUNG AND SEMI MATURE DECIDUOUS TREES (1-10-35CM DBH) IN POOR TO FAIR CONDITION. MAJORITY OF SPECIES INCLUDE MANITOBA MAPLE, ASH, AND ELM, WITH 2 YOUNG RED MAPLE.
- HEDGEROW B**
HEDGEROW B CONSISTS OF YOUNG AND SEMI MATURE DECIDUOUS TREES (1-10-45CM DBH) IN POOR TO FAIRLY GOOD CONDITION WITH A VARIED UNDERSTORY. MAJORITY OF SPECIES INCLUDE MANITOBA MAPLE, ASH, AND ELM, RED MAPLE, BIRCH. UNDER STORY CONSIST OF DECIDUOUS SHRUBS AND SMALL TREES INCLUDING ALTERNATE LEAFED DOGWOOD, VIBERNUM, HAZELNUT, HONEYSUCKLE, GRAPE AND VIRGINIA CREEPER VINES ARE EVIDENT.



no.	revision	date
6		
5		
4	ISSUED FOR PERMIT	04 June 2021
3	ISSUED FOR TENDER	04 June 2021
2	ISSUED FOR SITE PLAN APPLICATION	28 April 2021
1	FOR CLIENT MEETING	Mar. 2021

N45 ARCHITECTURE INC.
71 Bank Street, 7th Floor - Ottawa, Ontario, K1P 5N2
tel. 613.224.0095 fax 613.224.9811

project
**RUSSELL RECREATION
COMPLEX PARK PROJECT
PHASE 1**
TOWNSHIP OF RUSSELL, ONTARIO



drawing title
SITE PLAN - DEMOLITION

scale AS INDICATED	drawn by J. J.
date Mar. 2021	checked by R.M.
project number 20-620	drawing number D-001

CONTRACTOR TO VERIFY ALL DIMENSIONS AND NOTIFY THE ARCHITECT OF ANY DISCREPANCIES BEFORE WORK COMMENCES. DO NOT SCALE DRAWINGS.

revision