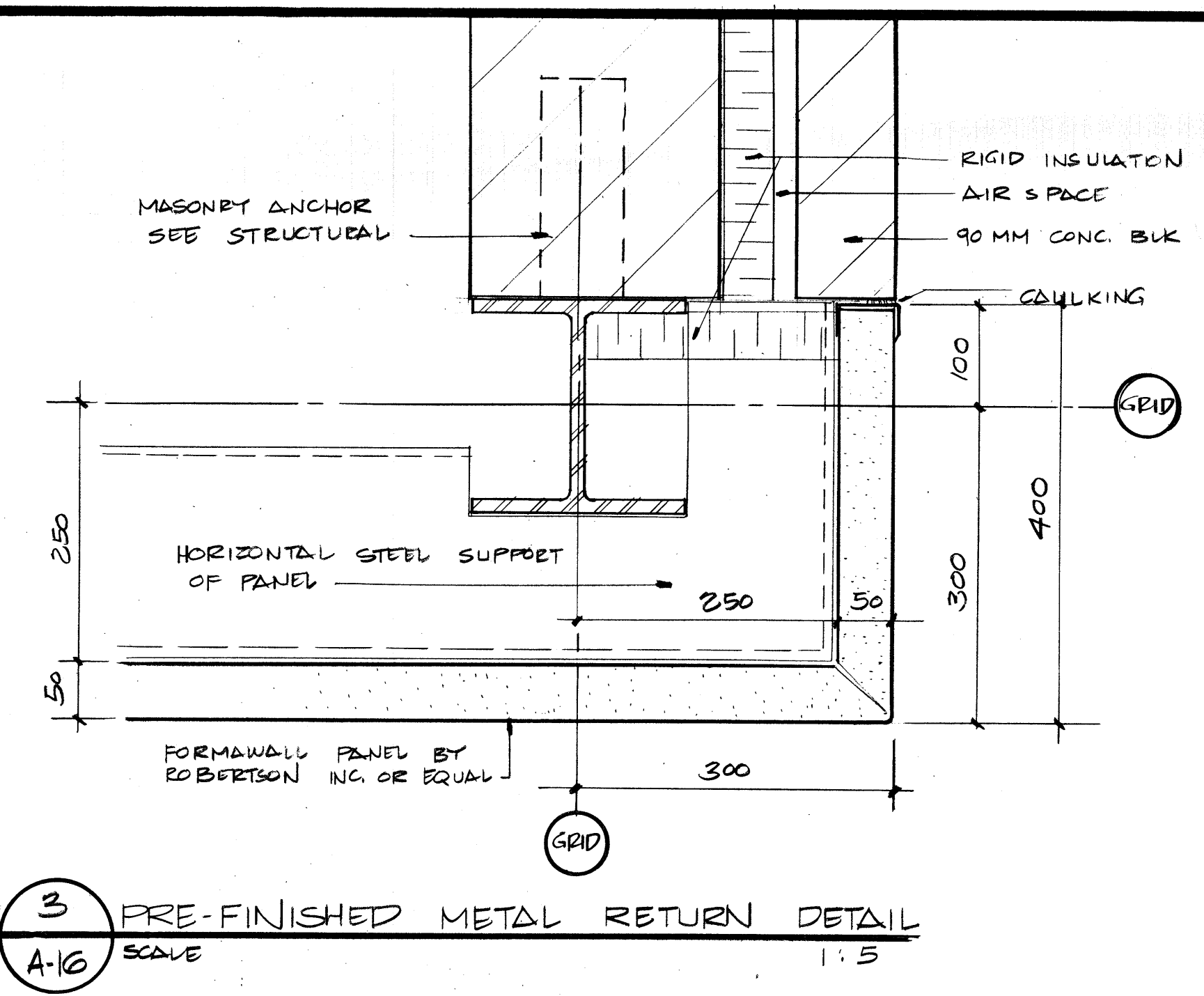
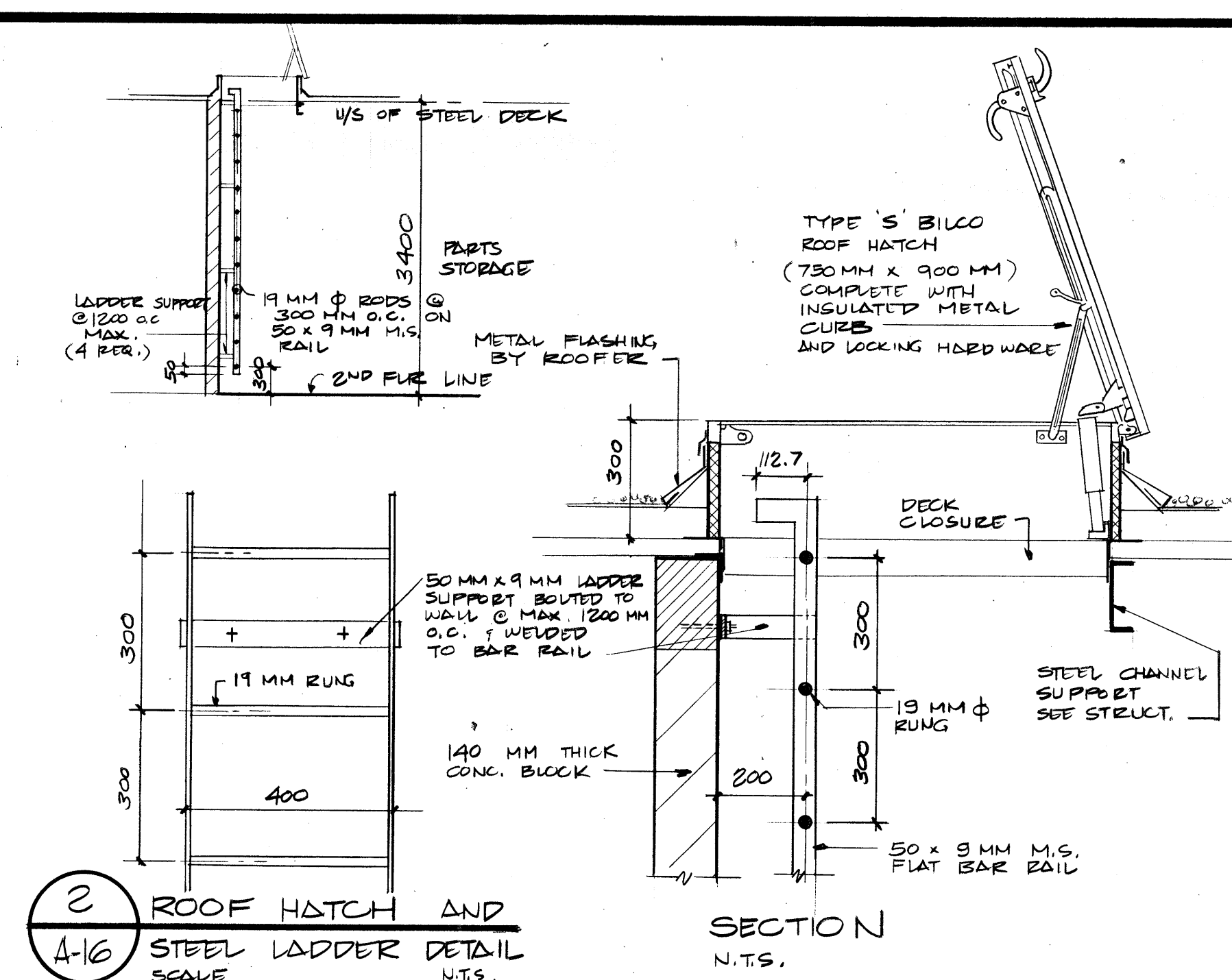


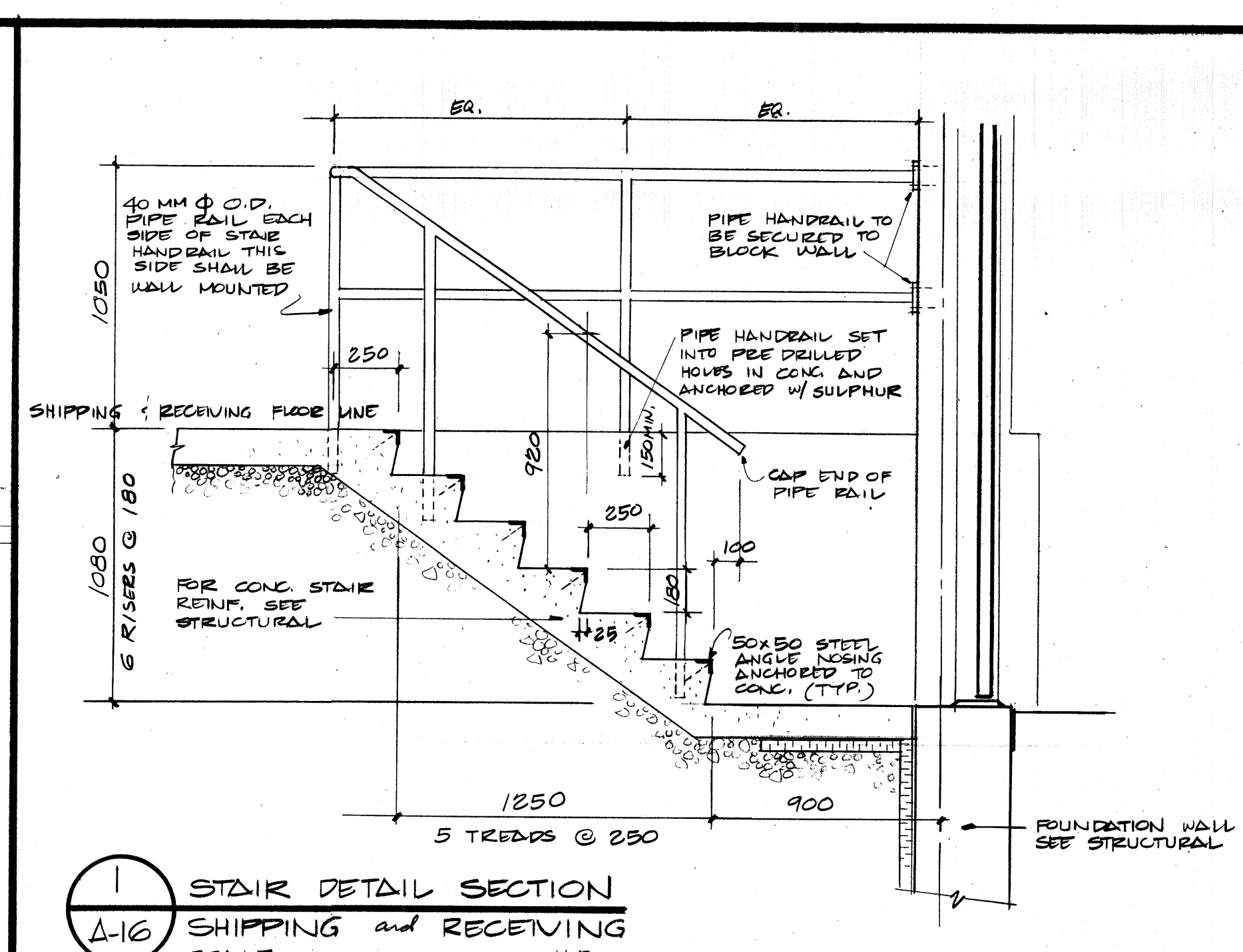
This drawing shall not be used for construction purposes unless countersigned by: *G. Jiggoros*
 g. d. xiggoros, p. eng.
 g. d. xiggoros & associates ltd.
 consulting engineers
 4111 Lawrence Avenue East
 Scarborough, Ontario M1E 2S2
 Tel. (416) 283-7208



3 PRE-FINISHED METAL RETURN DETAIL
 A-16 SCALE 1:5



2 ROOF HATCH AND STEEL LADDER DETAIL
 A-16 SCALE N.T.S.



1 STAIR DETAIL SECTION SHIPPING AND RECEIVING
 A-16 SCALE 1:20

NO.	REVISIONS	DATE

153cad for tender JUL 12 1985

CITY OF OTTAWA BUILDINGS BRANCH
 JUL 10 1985

REGISTERED PROFESSIONAL ENGINEER
 G. XIGGOROS
 84-11
 PROVINCE OF ONTARIO

PROJECT TITLE
 PROPOSED WAREHOUSE
 HEADQUARTERS AND
 DISTRIBUTION CENTRE
 FOR
**HOLDER
 OF NORTH AMERICA
 OTTAWA CANADA**

DRAWING TITLE
MISCELLANEOUS DETAILS

REVISED

CITY OF OTTAWA
 RECEIVED
 JUL 16 1985
 BUILDINGS BRANCH

REVISED

DRAWN BY RS	DATE
CHECKED BY GX	DATE
PROJECT NO. 84-11	DRAWING NO. A-16
DATE ISSUED June/85	

MICROFILMED