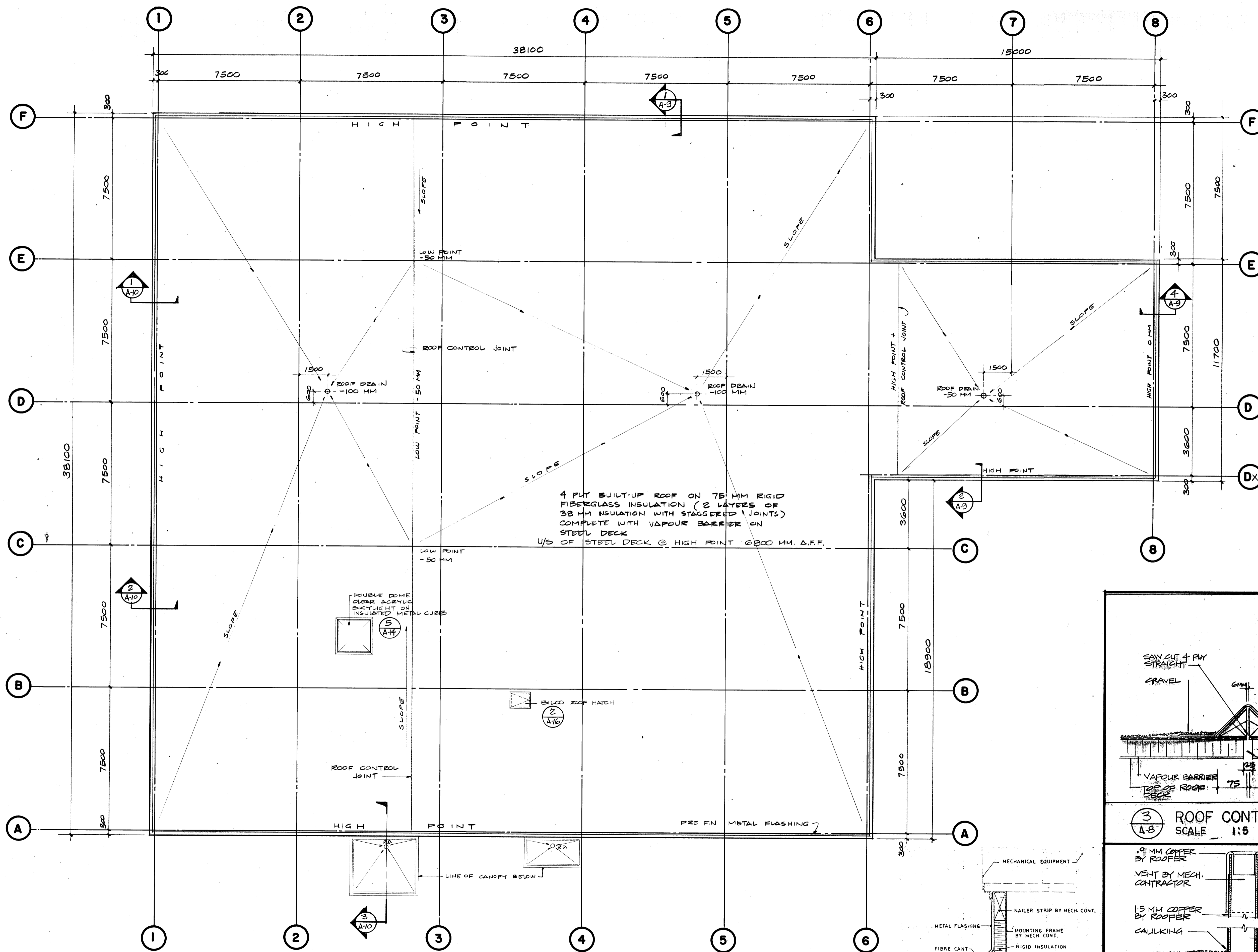


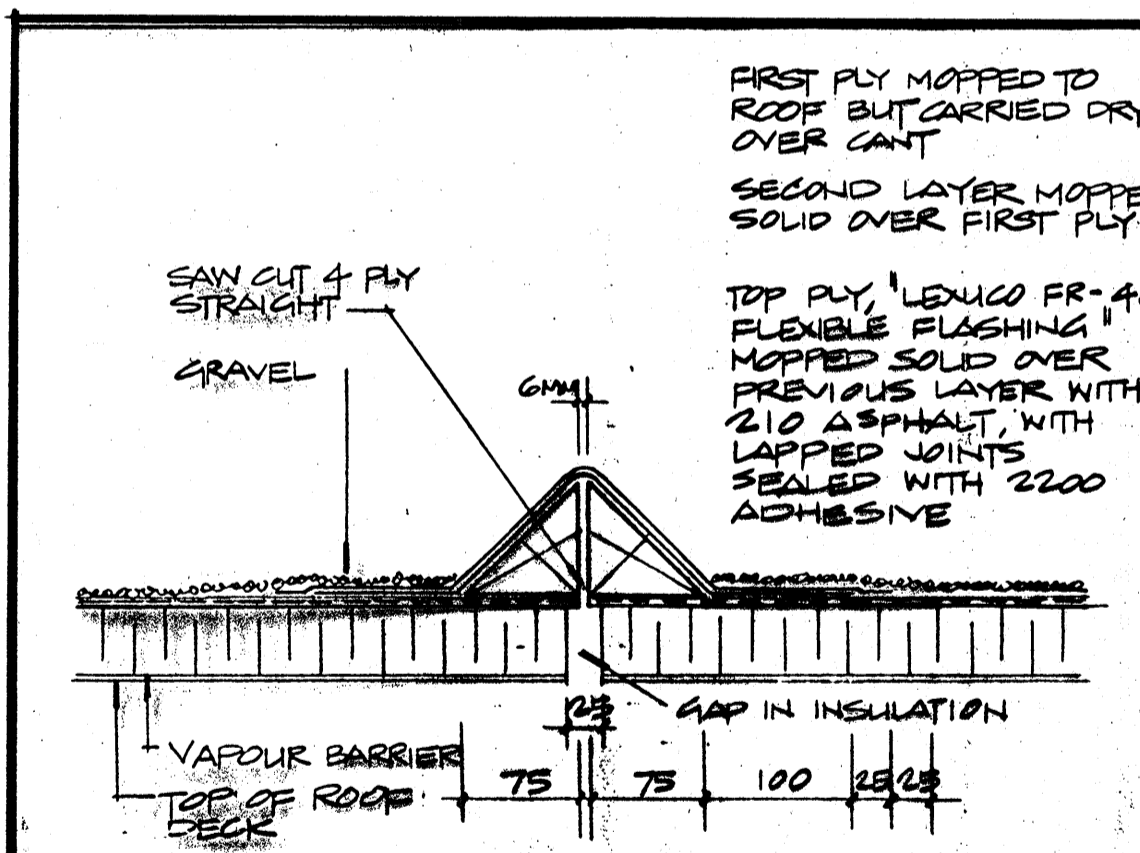
This drawing shall not be used for construction purposes unless countersigned by: *G. Xiggoros*

g. d. xiggoros, p. eng.

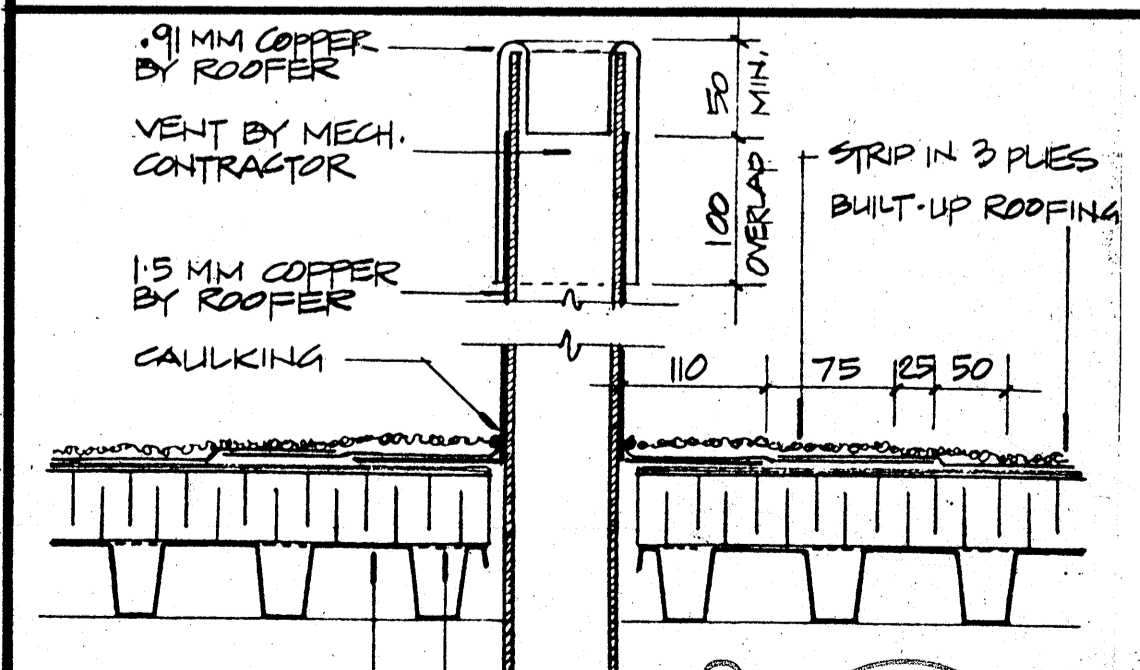
g. d. xiggoros & associates ltd.
consulting engineers
4111 Lawrence Avenue East
Scarborough, Ontario M1E 2S2
Tel. (416) 283-7208



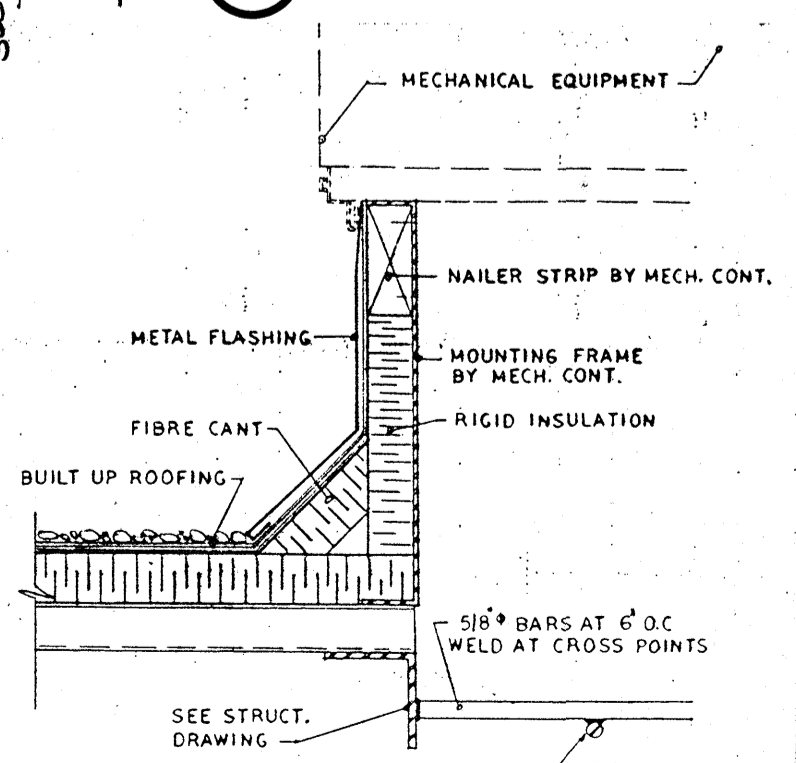
4 PLY BUILT-UP ROOF ON 75 MM RIGID FIBERGLASS INSULATION (2 LAYERS OF 38 MM INSULATION WITH STAGGERED JOINTS) COMPLETE WITH VAPOUR BARRIER ON STEEL DECK
U/S OF STEEL DECK @ HIGH POINT 6800 MM. A.F.F.



③ ROOF CONTROL JOINT DET.
SCALE 1:5



② VENT THRU ROOF
SCALE 1:5



④ ROOF CURB FOR MECH. EQUIPMENT

① ROOF PLAN
SCALE 1:100

FIRST PLY MAPPED TO ROOF BUT CARRIED OVER CANT
SECOND LAYER MAPPED SOLID OVER FIRST PLY
TOP PLY, LEXICO FR-40 FLEXIBLE FLASHING MAPPED SOLID OVER PREVIOUS LAYER WITH 210 ASPHALT WITH LAPPED JOINTS SEALED WITH 2200 ADHESIVE

Issued for tender	July 2 1985
No.	REVISIONS
	DATE

CITY OF OTTAWA
BUILDINGS BRANCH
OCT 10 1985
CHECKED USE & OCCUPANCE



PROJECT TITLE
PROPOSED WAREHOUSE
HEADQUARTERS AND
DISTRIBUTION CENTRE
FOR

HOLDER
OF NORTH AMERICA
OTTAWA CANADA

DRAWING TITLE
ROOF PLAN

DRAWN BY	R.S	DATE	May, 1985
CHECKED BY	G.X	DATE	May, 1985
PROJECT NO.	84-11	DRAWING NO.	A-8
DATE ISSUED	May/85		

MICROFILMED