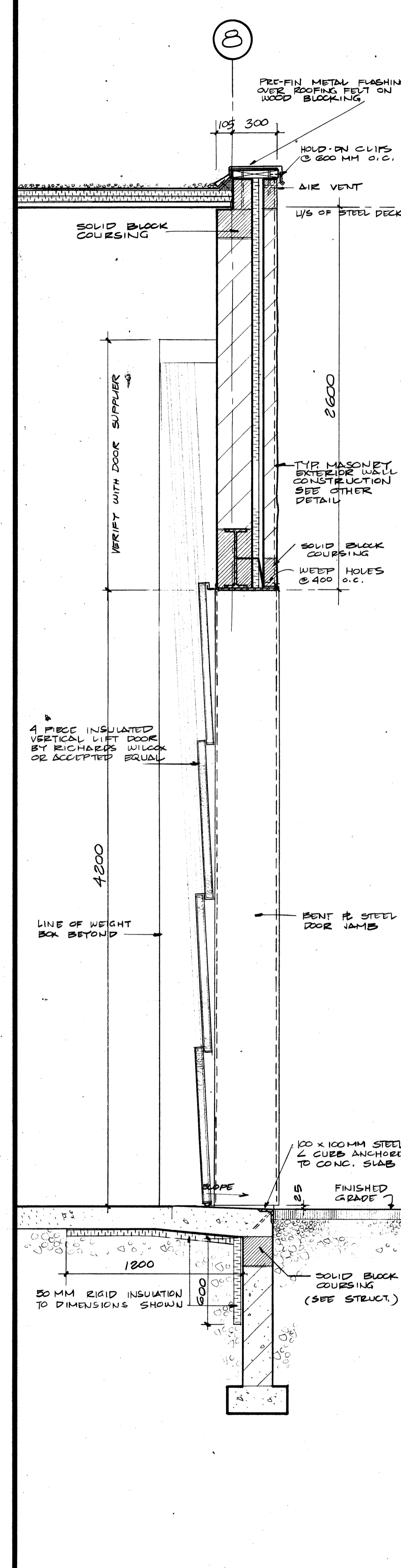


This drawing shall not be used for construction purposes unless countersigned by: *G. Xiggoros*
 g. d. xiggoros, p. eng.
 g. d. xiggoros & associates ltd.
 consulting engineers
 4111 Lawrence Avenue East
 Scarborough, Ontario M1E 2S2
 tel. (416) 283-7208



RECEIVING DOOR SEALS

1 Supply and install one truck dock seal at each Receiving Dock Door. Seals to meet following specifications:

For 8'x8' (2438 x 2438) opening:
 Side pads 8' high x 14" projection (2438 x 356) with 15" (381) face tapered to 12" (305) at building wall; Head Pads 10' (3048) long x 12" (305) high x 14" (356) projection complete with drop flap

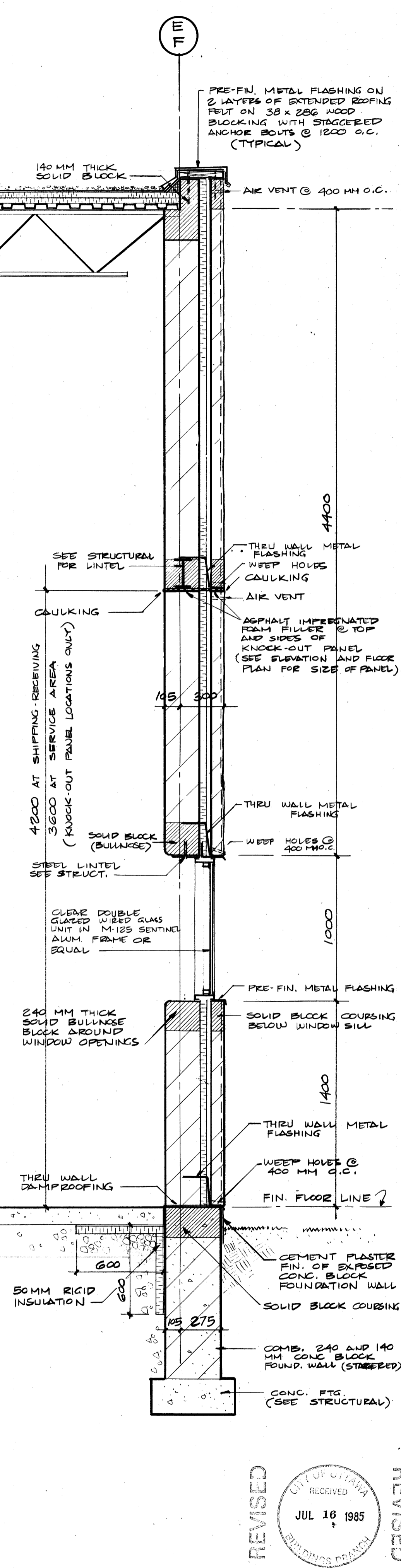
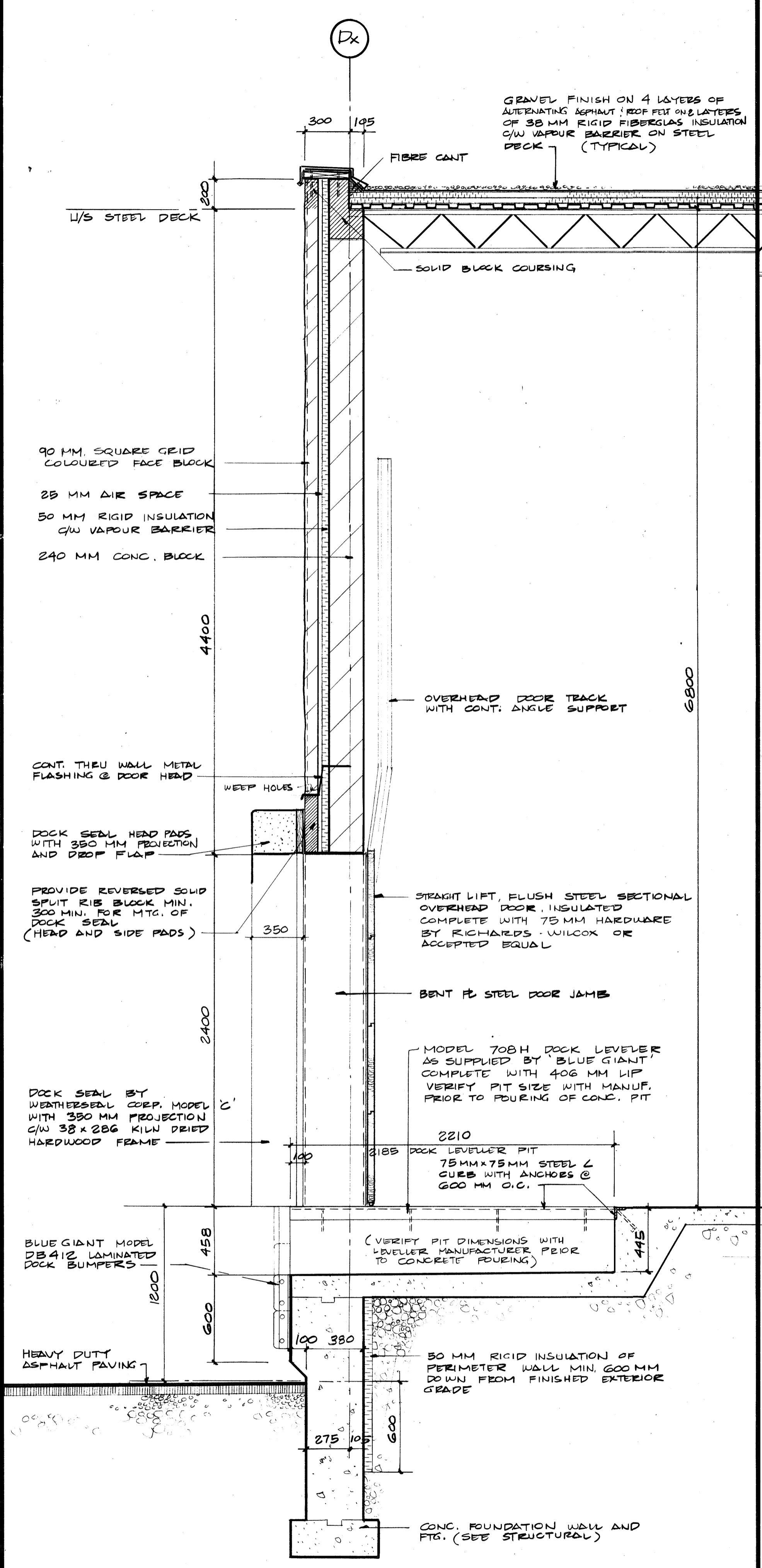
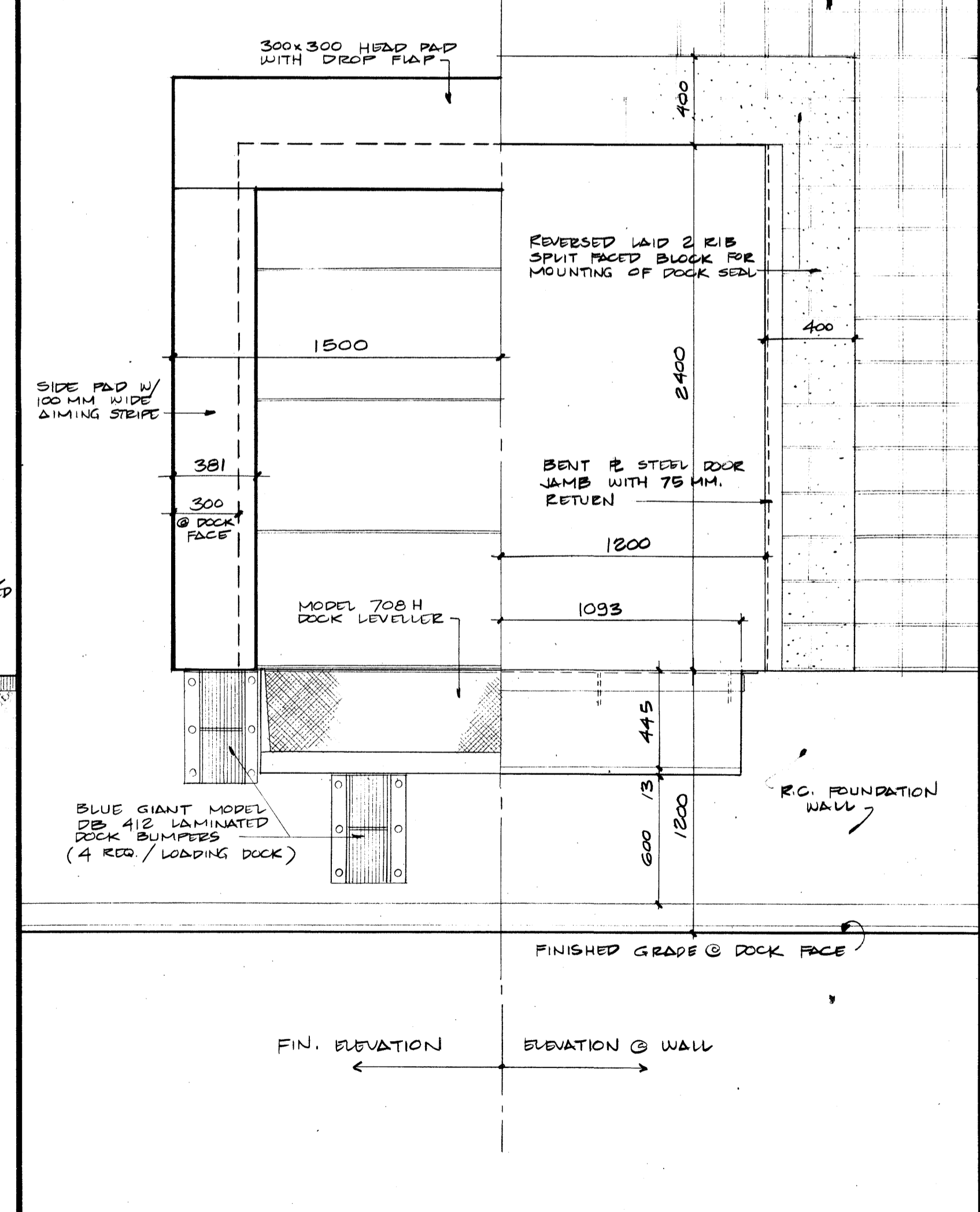
Note that 14" (356) projection is based on dockwall set back 4" (100) from face of concrete dock foundation wall.

Foam: Polyurethane
 Framing: 2"x12" (50.8x305) kiln dried, treated and factory painted hardwood
 Hardware: Hot dip galvanized.
 Base Layer: 40 oz./sq. yd. (1.312 kg/m²) neoprene coated nylon.
 Facing: 40 oz./sq.yd. (1.3125 kg/m²) neoprene coated nylon.
 Stripe: Full length 4" (102) wide, 18 oz./sq.yd. (0.610 3 kg/m²) coated nylon yellow aiming stripe.

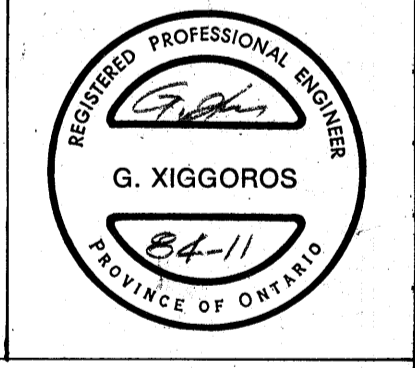
The above covers Standard Duty Seal by Argo Material Handling Ltd, Serco Eng, and by Blue Giant Equipment Canada. Alternate seals meeting these specifications will be accepted if approved in writing

DOCK BUMPERS

1 Blue Giant Model DB412, Argo Model D2014 or Serco Eng. VB420. Build anchor bolts into concrete formwork prior to placing concrete. Provide one bumper at each side of each leveller and two below each leveller. Same layout where no leveller.



NO	REVISIONS	DATE
	Issued for tender	July 2 85



PROJECT TITLE
 PROPOSED WAREHOUSE
 HEADQUARTERS AND
 DISTRIBUTION CENTRE
 FOR
HOLDER OF NORTH AMERICA OTTAWA CANADA

DRAWING TITLE
SECTIONS
 CITY OF OTTAWA BUILDINGS BRANCH
 JUL 10 1985
 CHECKED BY & OCCUPANT
 SIGNED

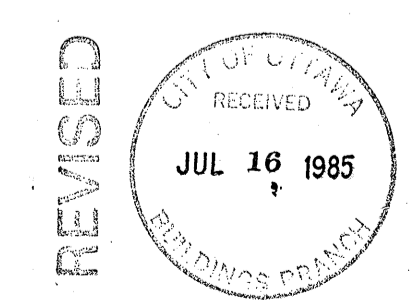
DRAWN BY <i>RS</i>	DATE May, 1985
CHECKED BY <i>GX</i>	DATE May, 1985
PROJECT NO. 84-11	DRAWING NO. A-9
DATE ISSUED 1/14/85	

4 SIDE LOADING DETAIL
 A-9 SCALE 1:20

3 DETAIL ELEVATION @ LOADING DOCK
 A-9 SCALE 1:20

2 DETAIL SECTION THRU LOADING DOCK
 A-9 SCALE 1:20

1 MASONRY WALL DETAIL
 A-9 SCALE 1:20



MICROFILMED