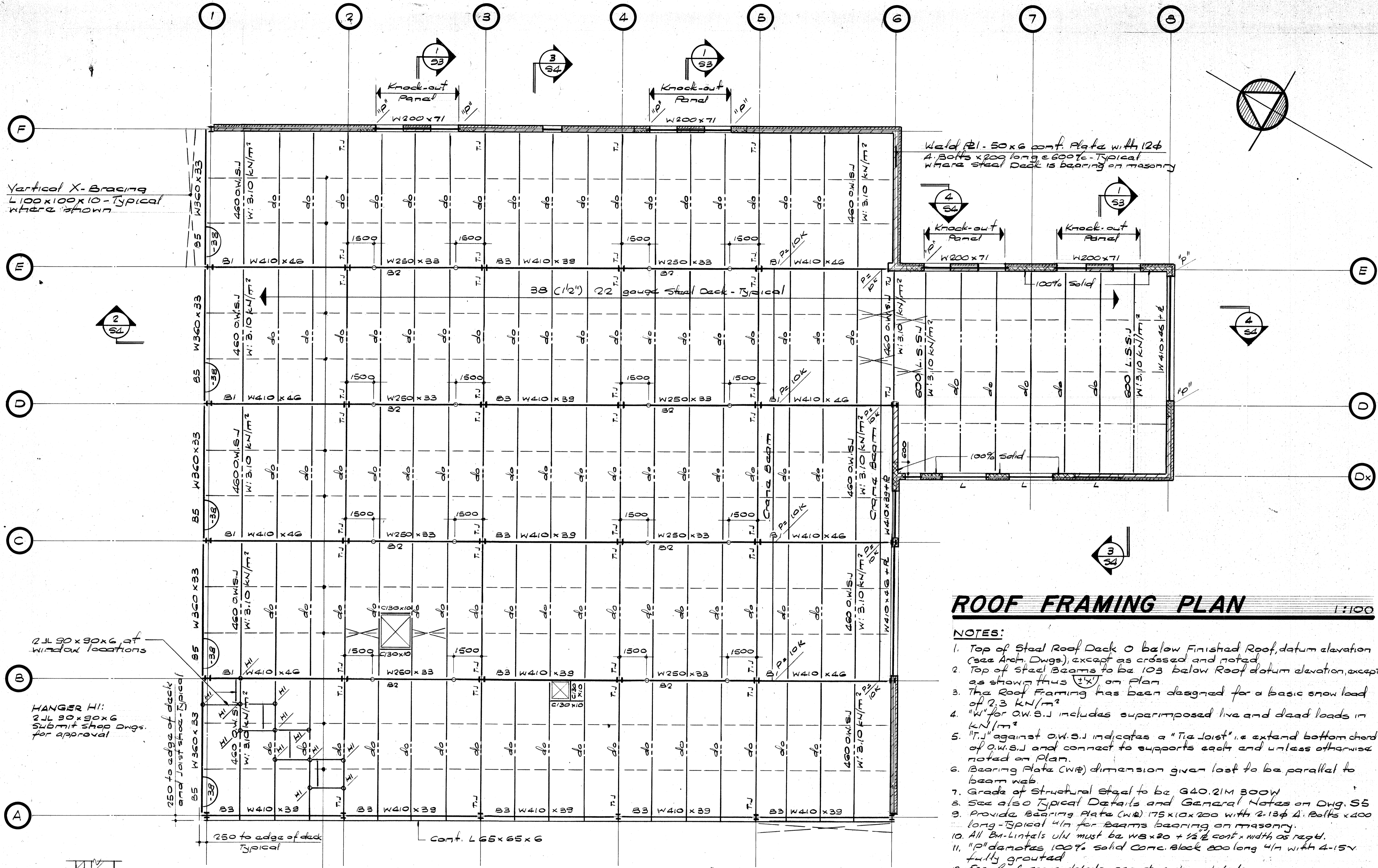
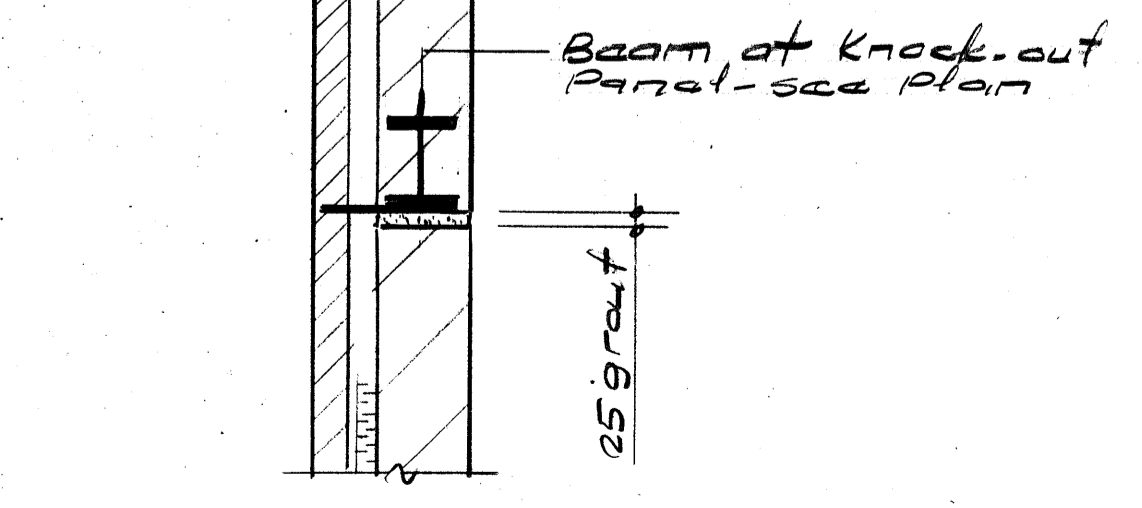


This drawing shall not be used for construction purposes unless countersigned by: *G. Xiggoros*
 g. d. xiggoros, p. eng.
 g. d. xiggoros & associates ltd.
 consulting engineers
 4111 lawrence avenue east
 scarborough, ontario M1E 2S2
 tel. (416) 283-7208



ROOF FRAMING PLAN 1:100

- NOTES:**
1. Top of Steel Roof Deck 0 below Finished Roof, datum elevation (see Arch. Dwg), except as crossed and noted.
 2. Top of Steel Beams to be 103 below Roof datum elevation, except as shown, thus $\frac{1}{2} \times$ on plan.
 3. The Roof Framing has been designed for a basic snow load of 2.3 kN/m².
 4. "W" for O.W.S.J. includes superimposed live and dead loads in kN/m².
 5. "T.J." against O.W.S.J. indicates a "Tie Joist", i.e. extend bottom chord of O.W.S.J. and connect to supports each end unless otherwise noted on plan.
 6. Bearing Plate (WP) dimension given last to be parallel to beam web.
 7. Grade of Structural Steel to be G40.21M 300W.
 8. See also Typical Details and General Notes on Dwg. 55.
 9. Provide Bearing Plate (WP) 175x10x200 with 2-13φ 4. Bolts x 400 long - Typical 4/n for Beams bearing on masonry.
 10. All Br-Lintels U/I must be W8x20 + 1/2" cont. x width as req'd.
 11. "P" denotes 100% solid Conc. Block 200 long 4/n with 4-15V fully grouted.
 12. For Roof crane details see shop dwg details.
 13. Joist Supplier to provide all bearing plates under joist shoes. Plates to be sized to limit stress under bearing plates to L7 MPa. Provide 2-16φ anchor rods x 400 long at each plate.
 14. Crane beam to be designed for a maximum capacity load of 10 Kips at any point.
 15. For Mechanical openings, size and location refer to Mech. Dwg. Trim Roof openings with C130x10.
 16. Roof Joists supporting Mechanical Units to be designed to carry additional point loads. For point loads refer to Mech. Dwg.



Cont. Horizontal Bridging Top and Bottom + additional X-Bridging where shown L 35x35x3 - Typical 4/n

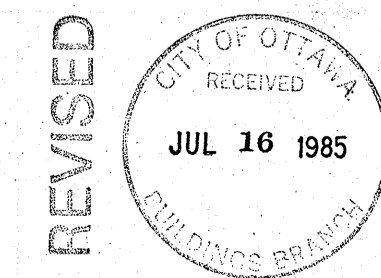
Issued for Tender		JUL 12 85
NO.	REVISIONS	DATE



PROJECT TITLE
PROPOSED WAREHOUSE HEADQUARTERS AND DISTRIBUTION CENTRE FOR HOLDER OF NORTH AMERICA OTTAWA CANADA

ROOF FRAMING PLAN

DRAWN BY	L.R.S	DATE	May, 1985
CHECKED BY	G.X	DATE	May, 1985
PROJECT NO.	84-11	DRAWING NO.	
DATE ISSUED	May/85		



53

SECTION 1/53 1:20