

WOODVALE PENTECOSTAL CHURCH RENOVATION

205 GREENBANK RD, NEPEAN, ON K2H 8K9

ELECTRICAL

DRAWING LIST

SYMBOL	DESCRIPTION
E001	ELECTRICAL TITLE SHEET
E002	ELECTRICAL SITE PLAN DEMOLITION WORK
E003	ELECTRICAL SITE PLAN NEW WORK
E004	ELECTRICAL SINGLE LINE DIAGRAM NEW WORK
E100	ELECTRICAL GROUND FLOOR (LEVEL 1) LIGHTING & FIRE ALARM DEMOLITION WORK
E101	ELECTRICAL GROUND FLOOR (LEVEL 1) LIGHTING & FIRE ALARM NEW WORK
E102	ELECTRICAL GROUND FLOOR (LEVEL 1) ADDITION LIGHTING & FIRE ALARM NEW WORK
E103	ELECTRICAL GROUND FLOOR (LEVEL 1) POWER & SYSTEMS DEMOLITION WORK
E104	ELECTRICAL GROUND FLOOR (LEVEL 1) POWER & SYSTEMS NEW WORK
E105	ELECTRICAL GROUND FLOOR (LEVEL 1) ADDITION POWER & SYSTEMS NEW WORK
E200	ELECTRICAL GROUND FLOOR (LEVEL 2) LIGHTING & FIRE ALARM DEMOLITION WORK
E201	ELECTRICAL GROUND FLOOR (LEVEL 2) LIGHTING & FIRE ALARM NEW WORK
E202	ELECTRICAL GROUND FLOOR (LEVEL 2) ADDITION LIGHTING & FIRE ALARM NEW WORK
E203	ELECTRICAL GROUND FLOOR (LEVEL 2) POWER & SYSTEMS DEMOLITION WORK
E204	ELECTRICAL GROUND FLOOR (LEVEL 2) POWER & SYSTEMS NEW WORK
E205	ELECTRICAL GROUND FLOOR (LEVEL 1) ADDITION POWER & SYSTEMS NEW WORK

ABBREVIATION LEGEND

SYMBOL	DESCRIPTION
C	CEILING MOUNTED
GFI	GROUND FAULT INTERRUPTING, 5 mA
OC	OVER COUNTER
RF	RE-FEED

LINE TYPE LEGEND

LINE TYPE	DESCRIPTION
----	DEMOLITION
—	NEW WORK
---	EXISTING
----	CONDUIT UNDER SLAB

LIGHTING LEGEND

SYMBOL	DESCRIPTION
	600mm X 1200mm LIGHT FIXTURE - TYPE AS SHOWN
	300mm X 1200mm LIGHT FIXTURE - TYPE AS SHOWN
	WALL MOUNTED OCCUPANCY SENSOR SWITCH
	ROOM CONTROLLER
	CEILING MOUNTED OCCUPANCY SENSOR SWITCH
	EMERGENCY BATTERY UNIT C/W RECEPTACLE AND LIGHTING HEADS
	REMOTE EMERGENCY LIGHTING DUAL HEAD - WALL MOUNTED
	REMOTE EMERGENCY LIGHTING DUAL HEAD - CEILING MOUNTED

FIRE ALARM LEGEND

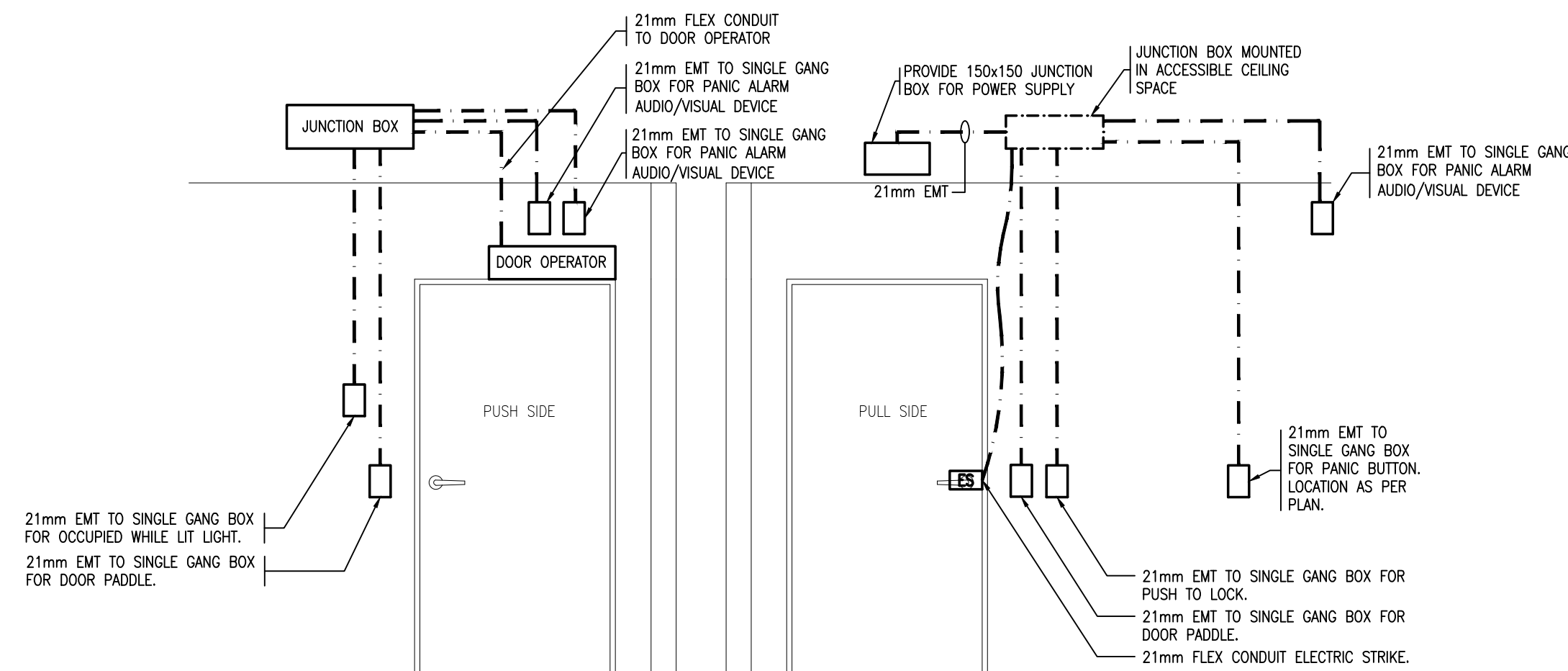
SYMBOL	DESCRIPTION
	FIRE ALARM AUDIBLE DEVICE
	FIRE ALARM STROBE LIGHT

POWER LEGEND

SYMBOL	DESCRIPTION
	15A, 120V WALL MOUNTED DUPLEX RECEPTACLE
	DEDICATED DUPLEX RECEPTACLE
	GROUND FAULT INTERRUPTING RECEPTACLE
	RECEPTACLE INSTALLED OVER COUNTER
	5-20R RECEPTACLE
	SPECIAL RECEPTACLE - TYPE AS INDICATED
	DISCONNECT SWITCH
	TRANSFORMER
	SURFACE MOUNTED PANEL
	BARRIER-FREE DOOR OPERATOR C/W PUSHBUTTONS

UNIVERSAL WASHROOM LEGEND

SYMBOL	DESCRIPTION
	TRANSFORMER
	PUSH BUTTON (PRESS FOR EMERGENCY ASSISTANCE) ROUGH-IN
	DOOR PUSH BUTTON ROUGH-IN
	ASSISTANCE INDICATOR/ANNUNCIATOR ROUGH-IN
	ELECTRICAL STRIKE ROUGH-IN
	REQUEST TO EXIT
	PUSH TO LOCK ROUGH-IN
	OCCUPIED WHEN LIT ROUGH-IN



- NOTES:
- TERMINATE ALL CONDUITS IN 300mm x 300mm x 150mm JUNCTION BOX MOUNTED ABOVE WASHROOM DRYWALL CEILING.
 - CONDUITS AND BOXES, HARDWARE AND CONTROLS WIRING BY DIMENSION 26. CONFIRM EXACT REQUIREMENTS WITH HARDWARE, PANIC SYSTEM MANUFACTURER & CONTROLS CONTRACTOR ON SITE BEFORE PROCEEDING.
 - COORDINATE EXACT LOCATION AND MOUNTING HEIGHT OF ALL DEVICES WITH ARCHITECTURAL DRAWINGS AND ON SITE PRIOR TO ROUGH-IN.
 - REFER TO PLANS FOR ACTUAL NUMBER OF DEVICES.
 - ELEVATION IS PROVIDED FOR REFERENCE ONLY, PROVIDE ALL ACCESSORIES FOR A COMPLETE AND FUNCTIONAL SYSTEM.

TYPICAL WASHROOM DOOR ROUGH-IN DETAIL

1
E001

N.T.S.

Client

DATE	REVISION	REF
2021-11-12	ISSUED FOR 70% REVIEW	-
2021-10-01	ISSUED FOR 66% COSTING	-
2021-08-27	ISSUED FOR 66% REVIEW	-
2021-06-18	ISSUED FOR 33% REVIEW	-

THE ENGINEER WAIVES ANY AND ALL RESPONSIBILITY AND LIABILITY FOR PROBLEMS WHICH ARISE FROM FAILURE TO FOLLOW THESE PLANS, SPECIFICATIONS AND THE DESIGN INTENT THEY CONVEY, OR FOR PROBLEMS WHICH ARISE FROM OTHER FAILURE TO OBTAIN AND / OR FOLLOW THE ENGINEER'S GUIDANCE WITH RESPECT TO ANY ERRORS, OMISSIONS, INCONSISTENCIES, AMBIGUITIES OR CONFLICTS WHICH ARE ALLEGED.

THIS DRAWING IS THE PROPERTY OF GOODKEY WEEDMARK & ASSOCIATES LIMITED AND ALL COPYRIGHTS ARE RESERVED. NO USE OF THIS DRAWING MAY BE MADE WITHOUT EXPRESS WRITTEN CONSENT.

DO NOT SCALE DRAWINGS

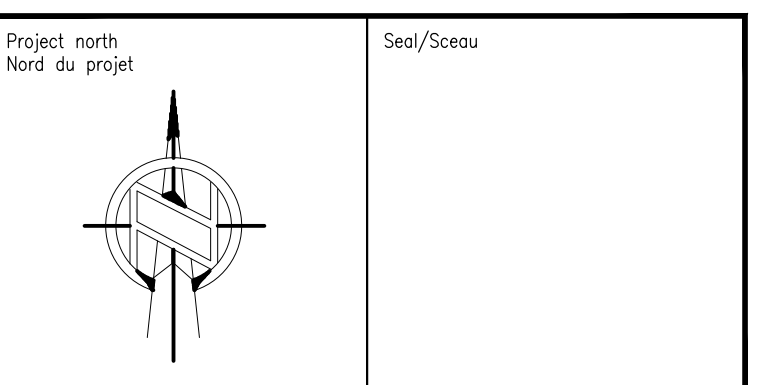
L'INGÉNIEUR DÉCLINE TOUTE RESPONSABILITÉ DÉCOULANT DE PROBLÈMES FAISANT SUITE AU NON RESPECT DES PLANS, DES SPÉCIFICATIONS ET DE L'INTENTION DU CONCEPTEUR, OÙ ILS INDIQUENT OU DE TOUTES LES PROBLÈMES POUVAIENT RÉSULTER DU DÉFAUT D'OBTENIR ET / OU DE SUIVRE LES CONSEILS DE L'INGÉNIEUR EN CE QUI CONCERNE LES ERREURS, OMISSIONS, INCONSISTANCES, AMBIGUITÉS OU CONFLITS ALLÉGUÉS.

CE Dessin est la propriété littéraire de GOODKEY WEEDMARK & ASSOCIATES LIMITED ET TOUTS LES DROITS SONT RÉSERVÉS. L'UTILISATION EST INTERDITE SANS LE CONSENTEMENT ÉCRIT DE L'AUTEUR.

NE PAS MESURER LES DESSINS A L'ÉCHELLE



GOODKEY WEEDMARK & ASSOCIATES LIMITED
1688 Woodward Dr. Ottawa Ontario Canada K2C 3R8
613 727-5111 Voice
613 727-5115 Fax
www.gweal.com Web



WOODVALE PENTECOSTAL CHURCH RENOVATION

ELECTRICAL TITLESHEET

Scale / Échelle	AS NOTED	Project no./No. du projet	2021-284
Design by / Conçu par	J.MOFFAT	Drawing/Dessin	
Drawn by / Dessiné par	C.BEHAN		
Reviewed by / Examiné par	J. MOFFAT		
Date	November 21	Revision no:	
		Acad file/Fichier:	

E001

OF 16

Client

DATE	REVISION	REF
2021-11-12	ISSUED FOR 70% REVIEW	-
2021-10-01	ISSUED FOR 66% COSTING	-
2021-08-27	ISSUED FOR 66% REVIEW	-
2021-06-18	ISSUED FOR 33% REVIEW	-

THE ENGINEER WAIVES ANY AND ALL RESPONSIBILITY AND LIABILITY FOR PROBLEMS WHICH ARISE FROM FAILURE TO FOLLOW THESE PLANS, SPECIFICATIONS AND THE DESIGN INTENT THEY CONVEY, OR FOR PROBLEMS WHICH ARISE FROM OTHER FAILURE TO OBTAIN AND / OR FOLLOW THE ENGINEER'S GUIDANCE WITH RESPECT TO ANY ERRORS, OMISSIONS, INCONSISTENCIES, AMBIGUITIES OR CONFLICTS WHICH ARE ALLEGED.

THIS DRAWING IS THE PROPERTY OF GOODKEY WEEDMARK & ASSOCIATES LIMITED AND ALL COPYRIGHTS ARE RESERVED. NO USE OF THIS DRAWING MAY BE MADE WITHOUT EXPRESS WRITTEN CONSENT.

DO NOT SCALE DRAWINGS

L'INGÉNIEUR DÉCLINE TOUTE RESPONSABILITÉ DÉCOULANT DE PROBLÈMES FAISANT SUITE AU NON RESPECT DES PLANS, DES SPÉCIFICATIONS ET DE L'INTENTION DU CONCEPTEUR QU'ILS INDIQUENT OU DE TOUTES LES PROBLÈMES POUVANT RÉSULTER DU DÉFAUT D'OBTENIR ET / OU DE SUIVRE LES CONSEILS DE L'INGÉNIEUR EN CE QUI CONCERNE LES ERREURS, OMISSIONS, INCONSISTANCES, AMBIGUITÉS OU CONFLITS ALLÉGUÉS.

CE Dessin est la propriété littéraire de Goodkey Weedmark & Associates Limited et tous les droits sont réservés. L'utilisation est interdite sans le consentement écrit de l'auteur.

NE PAS MESURER LES DESSINS À L'ÉCHELLE

Goodkey Weedmark
Consulting Engineers

GOODKEY WEEDMARK & ASSOCIATES LIMITED
1688 Woodward Dr. Ottawa Ontario Canada K2C 3R8
613 727-5111 Voice
613 727-5115 Fax
www.gweal.com Web

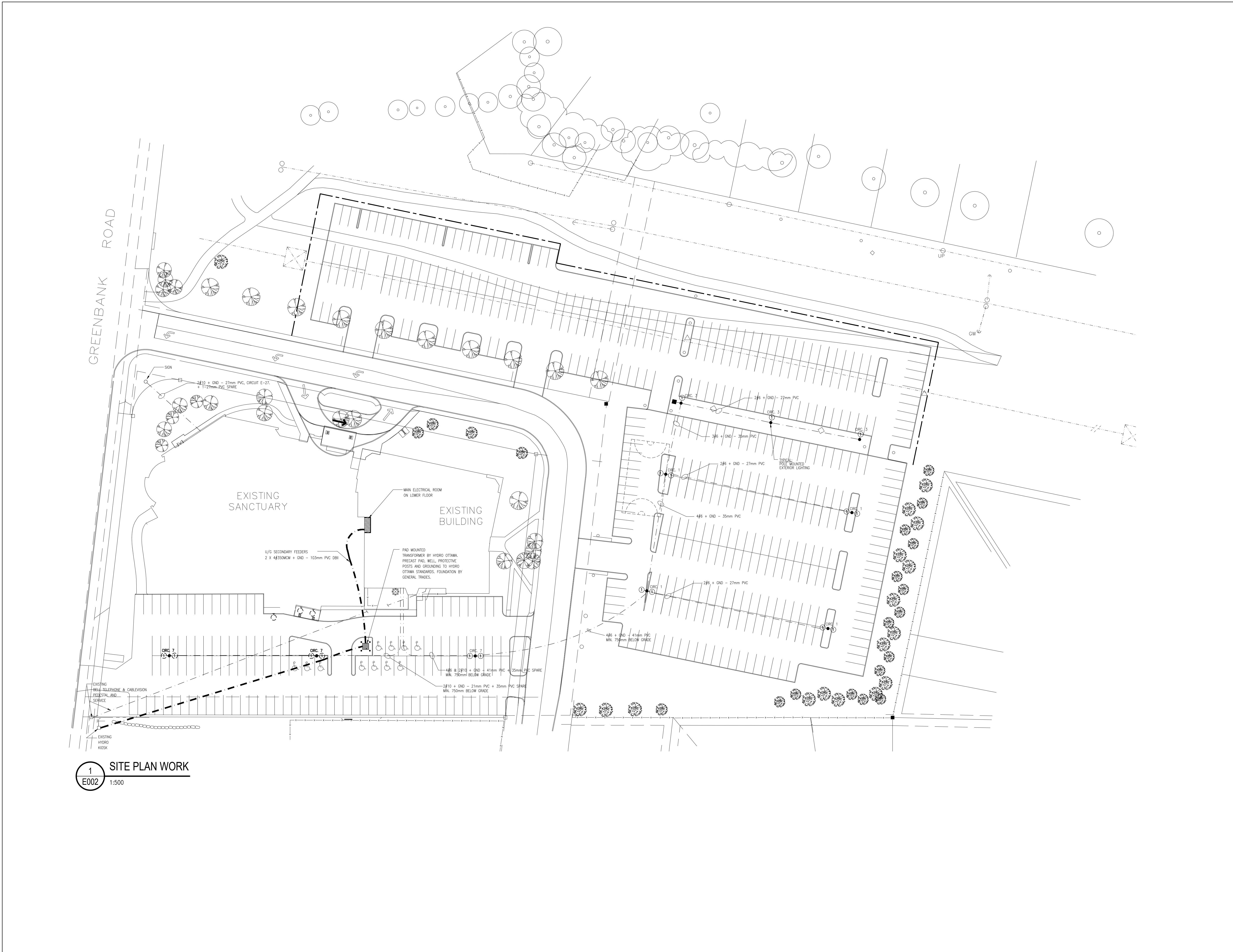
Project north
Nord du projet

Seal/Sciau

Project/Projet
WOODVALE PENTECOSTAL CHURCH RENOVATION

Drawing title/Titre du dessin
ELECTRICAL SITE PLAN DEMOLITION WORK

Scale Échelle	AS NOTED	Project no./No. du projet 2021-284
Design by Conçu par	J. MOFFAT	Drawing/Dessin
Drawn by Dessiné par	C. BEHAN	E002 OF 16
Reviewed by Examiné par	J. MOFFAT	
Date	November 21	Revision no: Acad file/Fichier:



Client

DATE	REVISION	REF
2021-11-12	ISSUED FOR 70% REVIEW	-
2021-10-01	ISSUED FOR 66% COSTING	-
2021-08-27	ISSUED FOR 66% REVIEW	-
2021-06-18	ISSUED FOR 33% REVIEW	-

THE ENGINEER WAIVES ANY AND ALL RESPONSIBILITY AND LIABILITY FOR PROBLEMS WHICH ARISE FROM FAILURE TO FOLLOW THESE PLANS, SPECIFICATIONS AND THE DESIGN INTENT THEY CONVEY, OR FOR PROBLEMS WHICH ARISE FROM OTHER FAILURE TO OBTAIN AND / OR FOLLOW THE ENGINEER'S GUIDANCE WITH RESPECT TO ANY ERRORS, OMISSIONS, INCONSISTENCIES, AMBIGUITIES OR CONFLICTS WHICH ARE ALLEGED.

THIS DRAWING IS THE PROPERTY OF GOODKEY WEEDMARK & ASSOCIATES LIMITED AND ALL COPYRIGHTS ARE RESERVED. NO USE OF THIS DRAWING MAY BE MADE WITHOUT EXPRESS WRITTEN CONSENT.

DO NOT SCALE DRAWINGS

L'INGÉNIEUR DÉCLINE TOUTE RESPONSABILITÉ DÉCOULANT DE PROBLÈMES FAISANT SUITE AU NON RESPECT DES PLANS, DES SPÉCIFICATIONS ET DE L'INTENTION DU CONCEPTEUR. OÙ IL Y A DES PROBLÈMES POUVANT RÉSULTER DU DÉFAUT D'OBTENIR ET / OU DE SUIVRE LES CONSEILS DE L'INGÉNIEUR EN CE QUI CONCERNE LES ERREURS, OMISSIONS, INCONSISTANCES, AMBIGUITÉS OU CONFLITS ALLÉGUÉS.

CE Dessin est la propriété littéraire de Goodkey Weedmark & Associates Limited et tous les droits sont réservés. L'utilisation est interdite sans le consentement écrit de l'auteur.

NE PAS MESURER LES DESSINS À L'ÉCHELLE

Goodkey Weedmark
Consulting Engineers

GOODKEY WEEDMARK & ASSOCIATES LIMITED
1688 Woodward Dr. Ottawa Ontario Canada K2C 3R8

613 727-5111 Voice
613 727-5115 Fax
www.gweal.com Web

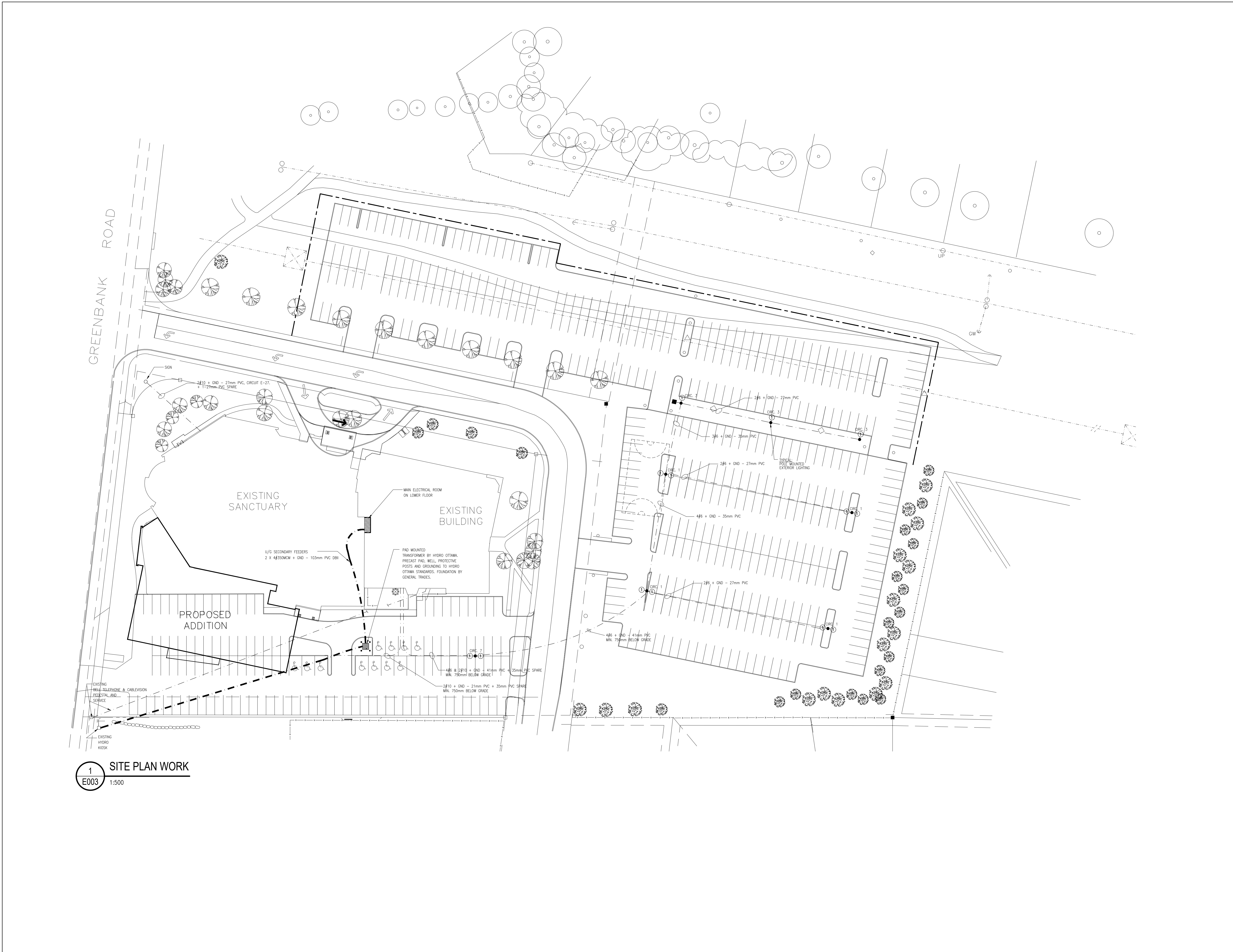
Project north
Nord du projet

Seal/Scieu

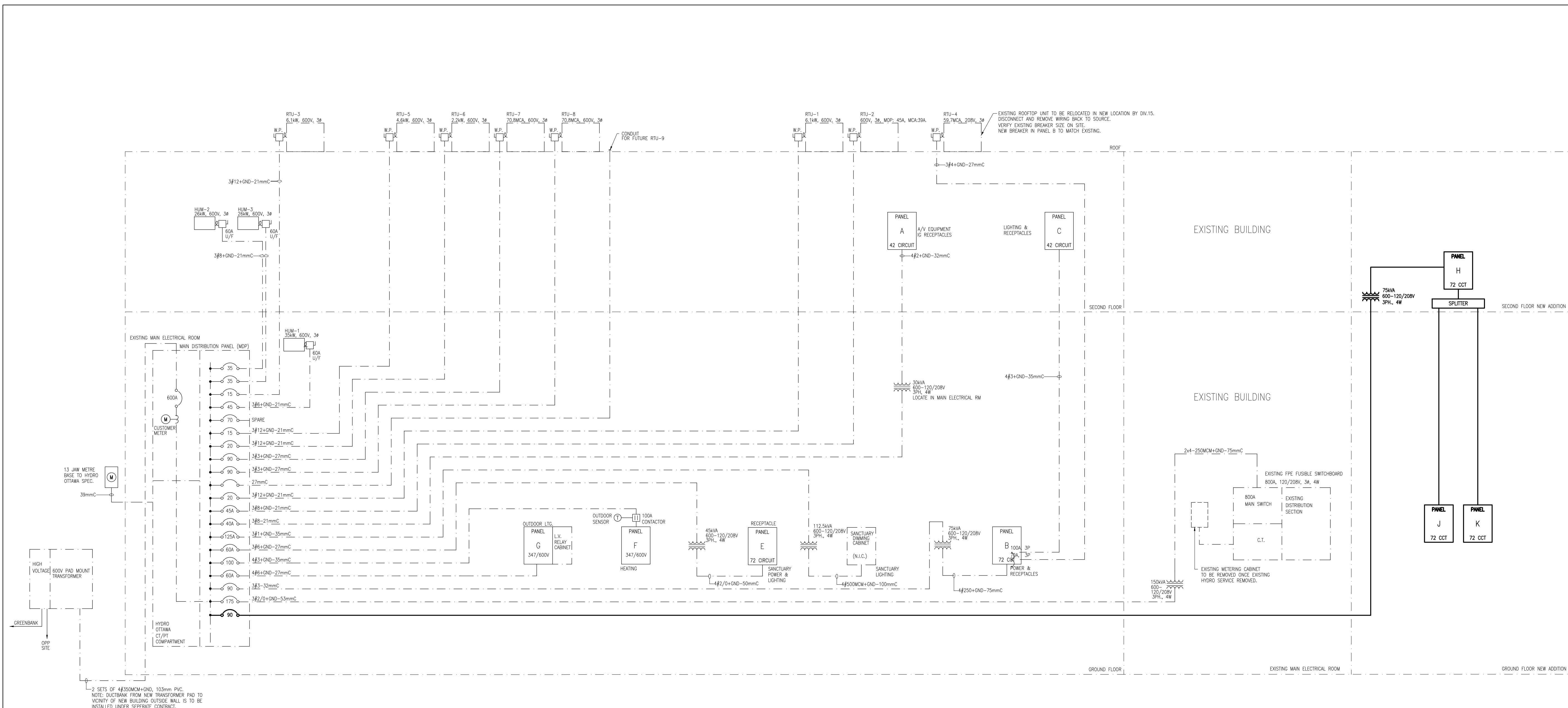
Project/Projet
WOODVALE PENTECOSTAL CHURCH RENOVATION

Drawing title/Titre du dessin
ELECTRICAL SITE PLAN WORK

Scale Échelle	AS NOTED	Project no./No. du projet 2021-284
Design by Conçu par	J. MOFFAT	Drawing/Dessin
Drawn by Dessiné par	C. BEHAN	E003 OF 16
Reviewed by Examiné par	J. MOFFAT	
Date	November 21	Revision no: Acad file/Fichier:



1 SITE PLAN WORK
E003 1:500



1
E004 N.T.S.

Client

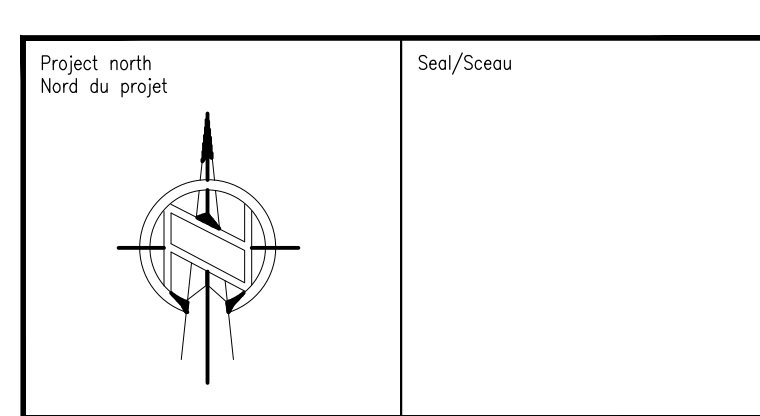
DATE	REVISION	REF
2021-11-12	ISSUED FOR 70% REVIEW	-
2021-10-01	ISSUED FOR 66% COSTING	-
2021-08-27	ISSUED FOR 66% REVIEW	-
2021-06-18	ISSUED FOR 33% REVIEW	-

THE ENGINEER WAIVES ANY AND ALL RESPONSIBILITY AND LIABILITY FOR PROBLEMS WHICH ARISE FROM FAILURE TO FOLLOW THESE PLANS, SPECIFICATIONS AND THE DESIGN INTENT THEY CONVEY, OR FOR PROBLEMS WHICH ARISE FROM OTHER FAILURE TO OBTAIN AND / OR FOLLOW THE ENGINEER'S GUIDANCE WITH RESPECT TO ANY ERRORS, OMISSIONS, INCONSISTENCIES, AMBIGUITIES OR CONFLICTS WHICH ARE ALLEGED.
THIS DRAWING IS THE PROPERTY OF GOODKEY WEEDMARK & ASSOCIATES LIMITED AND ALL COPYRIGHTS ARE RESERVED. NO USE OF THIS DRAWING MAY BE MADE WITHOUT EXPRESS WRITTEN CONSENT.
DO NOT SCALE DRAWINGS

L'INGÉNIEUR DÉCLINE TOUTE RESPONSABILITÉ DÉCOULANT DE PROBLÈMES FAISANT SUITE AU NON RESPECT DES PLANS, DES SPÉCIFICATIONS ET DE L'INTENTION DU CONCEPTEUR, OÙ IL Y AURAIT ÉTÉ INDICQUÉ OU DE TOUTES LES PROBLÈMES POUVAIENT RÉSULTER DU DÉFAUT D'OBTENIR ET / OU DE SUIVRE LES CONSEILS DE L'INGÉNIEUR EN CE QUI CONCERNE LES ERREURS, OMISSIONS, INCONSISTANCES, AMBIGUITÉS OU CONFLITS ALLÉGUÉS.
CE Dessin est la propriété littéraire de GOODKEY WEEDMARK & ASSOCIATES LIMITED ET TOUTS LES DROITS SONT RÉSERVÉS. L'UTILISATION EST INTERDITE SANS LE CONSENTEMENT ÉCRIT DE L'AUTEUR.
NE PAS MESURER LES DESSINS À L'ÉCHELLE

Goodkey Weedmark Consulting Engineers

GOODKEY WEEDMARK & ASSOCIATES LIMITED
1688 Woodward Dr. Ottawa Ontario Canada K2C 3R8
613 727-5111 Voice
613 727-5115 Fax
www.gweal.com Web



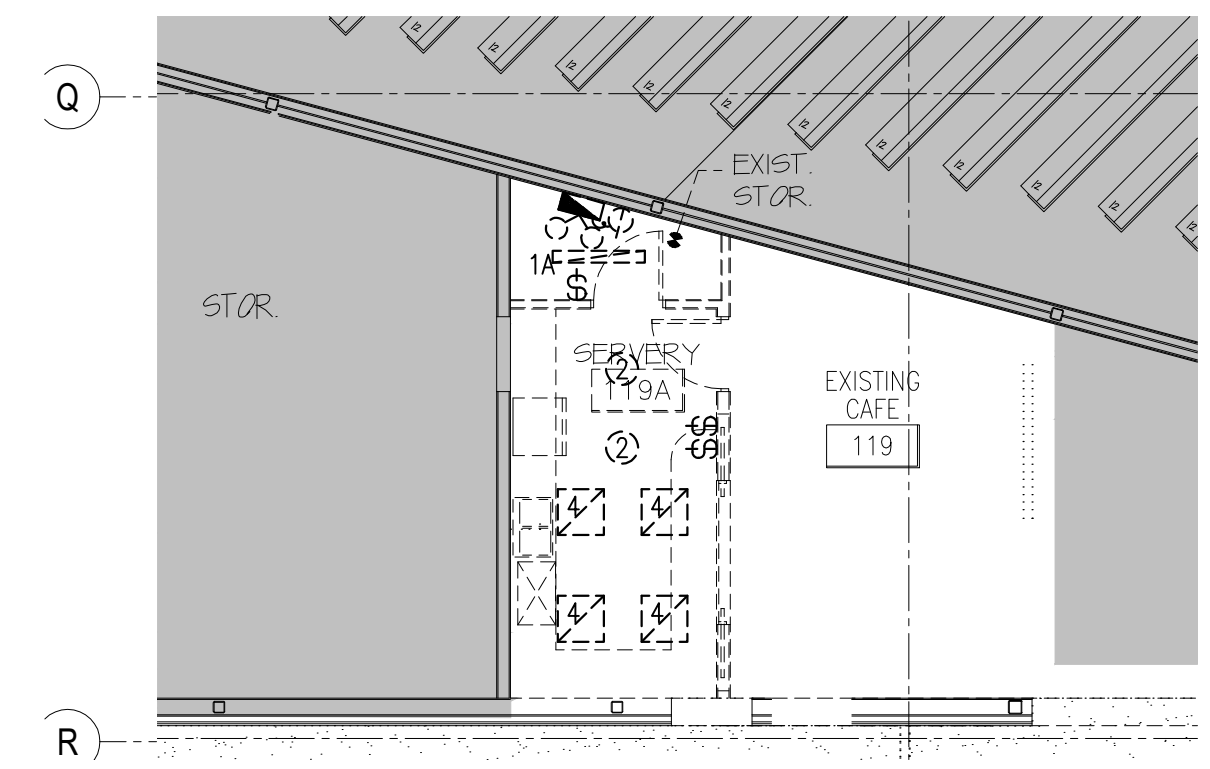
Project/Projet
WOODVALE PENTECOSTAL CHURCH RENOVATION

Drawing title/Titre du dessin
ELECTRICAL SINGLE LINE DIAGRAM WORK

Scale Échelle	AS NOTED	Project no./No. du projet 2021-284
Design by Conçu par	J. MOFFAT	Drawing/Dessin
Drawn by Dessiné par	C. BEHAN	E004 OF 16
Reviewed by Examiné par	J. MOFFAT	
Date Date	November 21	Revision no: Acad file/Fichier:



1
E100 1:100
DEMOLITION WORK
CHILDREN'S EDUCATION WING



2
E100 1:100
DEMOLITION WORK
TABLE AND CHAIR STORAGE

- DRAWING NOTES**
- 1 TYPICAL: DISCONNECT AND REMOVE EXISTING LIGHT FIXTURE C/W CONDUIT, WIRING AND MAKE SAFE.
 - 2 TYPICAL: DISCONNECT AND REMOVE EXISTING SWITCH AS INDICATED. REMOVE ALL UNUSED WIRING BACK TO SOURCE AND MAKE SAFE. MODIFY/EXTEND REMAINING WIRING TO SUIT NEW LIGHTING LAYOUT AND TYPE.
 - 3 TYPICAL: DISCONNECT AND REMOVE EXISTING EMERGENCY REMOTE HEAD, C/W CONDUIT AND WIRE AND MAKE SAFE.
 - 4 TYPICAL: DISCONNECT AND REMOVE EXISTING EMERGENCY BATTERY UNIT C/W CONDUIT, WIRING AND MAKE SAFE.
 - 5 TYPICAL: DISCONNECT AND REMOVE EXISTING FIRE ALARM PULL STATION C/W CONDUIT, WIRING AND MAKE SAFE.
 - 6 TYPICAL: DISCONNECT AND REMOVE EXISTING FIRE ALARM DETECTOR C/W CONDUIT, WIRING AND MAKE SAFE.
 - 7 TYPICAL: EXISTING FIRE SUPPRESSION HOOD REMOVED BY MECHANICAL CONTRACTOR. DISCONNECT EXISTING FIRE ALARM SYSTEM FROM UNIT AND REMOVE ALL ASSOCIATED CONDUIT AND WIRE BACK TO SOURCE AND MAKE SAFE.

DATE	REVISION	REF
2021-11-12	ISSUED FOR 70% REVIEW	-
2021-10-01	ISSUED FOR 66% COSTING	-
2021-08-27	ISSUED FOR 66% REVIEW	-
2021-06-18	ISSUED FOR 33% REVIEW	-

THE ENGINEER WAIVES ANY AND ALL RESPONSIBILITY AND LIABILITY FOR PROBLEMS WHICH ARISE FROM FAILURE TO FOLLOW THESE PLANS, SPECIFICATIONS AND THE DESIGN INTENT THEY CONVEY, OR FOR PROBLEMS WHICH ARISE FROM OTHER FAILURE TO OBTAIN AND / OR FOLLOW THE ENGINEER'S GUIDANCE WITH RESPECT TO ANY ERRORS, OMISSIONS, INCONSISTENCIES, AMBIGUITIES OR CONFLICTS WHICH ARE ALLEGED.

THIS DRAWING IS THE PROPERTY OF GOODKEY WEEDMARK & ASSOCIATES LIMITED AND ALL COPYRIGHTS ARE RESERVED. NO USE OF THIS DRAWING MAY BE MADE WITHOUT EXPRESS WRITTEN CONSENT.

DO NOT SCALE DRAWINGS

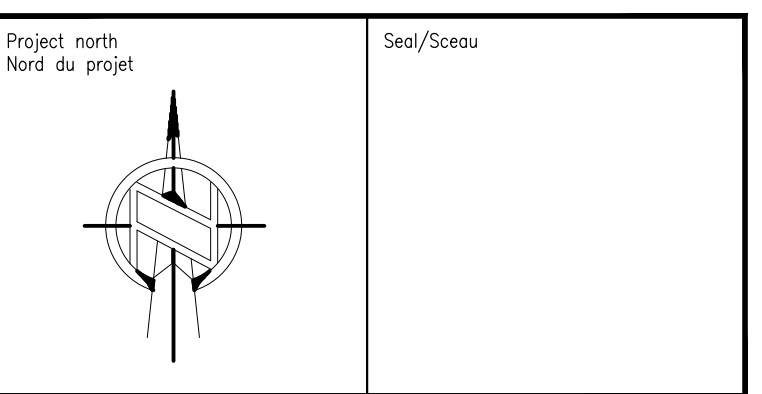
L'INGÉNIEUR DÉCLINE TOUTE RESPONSABILITÉ DÉCOULANT DE PROBLÈMES FAISANT SUITE AU NON RESPECT DES PLANS, DES SPÉCIFICATIONS ET DE L'INTENTION DU CONCEPT OÙ IL INDIQUENT OU DE TOUTS LES PROBLÈMES POUVAIENT RÉSULTER DU DÉFAUT D'OBTENIR ET / OU DE SUIVRE LES CONSEILS DE L'INGÉNIEUR EN CE QUI CONCERNE LES ERREURS, OMISSIONS, INCONSISTANCES, AMBIGUITÉS OU CONFLITS ALLÉGUÉS.

CE Dessin EST LA PROPRIÉTÉ LITTÉRAIRE DE GOODKEY WEEDMARK & ASSOCIATES LIMITED ET TOUTS LES DROITS SONT RÉSERVÉS. L'UTILISATION EST INTERDITE SANS LE CONSENTEMENT ÉCRIT DE L'AUTEUR.

NE PAS MESURER LES DESSINS A L'ÉCHELLE

Goodkey Weedmark
Consulting Engineers

GOODKEY WEEDMARK & ASSOCIATES LIMITED
1688 Woodward Dr. Ottawa Ontario Canada K2C 3R8
613 727-5111 Voice 613 727-5115 Fax www.gweal.com Web



Project/Projet
WOODVALE PENTECOSTAL CHURCH RENOVATION

Drawing title/Titre du dessin
**ELECTRICAL
GROUND FLOOR (LEVEL 1)
LIGHTING & FIRE ALARM
DEMOLITION WORK**

Scale Échelle	AS NOTED 2021-284	Project no./No. du projet 2021-284
Design by Conçu par	J. MOFFAT	Drawing/Dessin
Drawn by Dessiné par	C. BEHAN	E100 OF 16
Reviewed by Examiné par	J. MOFFAT	
Date Date	November 21	Revision no: Acad file/Fichier:



- DRAWING NOTES**
- 1 TYPICAL: PROVIDE NEW LIGHT FIXTURE C/W CONDUIT AND WIRE AND CONNECT TO LIGHTING CIRCUIT AND LIGHTING CONTROLS SERVING THE AREA.
 - 2 TYPICAL: PROVIDE NEW FIRE ALARM HORN C/W CONDUIT AND WIRE AND CONNECT TO FIRE ALARM CIRCUIT SERVING THE AREA.
 - 3 TYPICAL: PROVIDE NEW FIRE ALARM HORN/STROBE C/W CONDUIT AND WIRE AND CONNECT TO FIRE ALARM CIRCUIT SERVING THE AREA.
 - 4 TYPICAL: PROVIDE NEW EMERGENCY BATTERY UNIT C/W CONDUIT AND WIRE AND CONNECT TO LIGHTING CIRCUIT SERVING THE AREA.
 - 5 TYPICAL: PROVIDE NEW LIGHTING CONTROLS C/W CONDUIT AND WIRE AND CONNECT TO LIGHTING FIXTURES AND CIRCUIT SERVING THE AREA.
 - 6 TYPICAL: PROVIDE NEW DUAL REMOTE HEAD C/W CONDUIT AND WIRE AND CONNECT TO EMERGENCY BATTERY UNIT SERVING THE AREA.
 - 7 TYPICAL: PROVIDE NEW EMERGENCY EXIT SIGN C/W CONDUIT AND WIRE AND CONNECT TO EMERGENCY BATTERY UNIT AND CIRCUIT SERVING THE AREA.
 - 8 TYPICAL: PROVIDE NEW LIGHT FIXTURE C/W CONDUIT AND WIRE AND CONNECT TO UN-SWITCHED NIGHT LIGHTING CIRCUIT.

Client

DATE	REVISION	REF
2021-11-12	ISSUED FOR 70% REVIEW	-
2021-10-01	ISSUED FOR 66% COSTING	-
2021-08-27	ISSUED FOR 66% REVIEW	-
2021-06-18	ISSUED FOR 33% REVIEW	-

THE ENGINEER WAIVES ANY AND ALL RESPONSIBILITY AND LIABILITY FOR PROBLEMS WHICH ARISE FROM FAILURE TO FOLLOW THESE PLANS, SPECIFICATIONS AND THE DESIGN INTENT THEY CONVEY, OR FOR PROBLEMS WHICH ARISE FROM OTHER FAILURE TO OBTAIN AND / OR FOLLOW THE ENGINEER'S GUIDANCE WITH RESPECT TO ANY ERRORS, OMISSIONS, INCONSISTENCIES, AMBIGUITIES OR CONFLICTS WHICH ARE ALLEGED.

THIS DRAWING IS THE PROPERTY OF GOODKEY WEEDMARK & ASSOCIATES LIMITED AND ALL COPYRIGHTS ARE RESERVED. NO USE OF THIS DRAWING MAY BE MADE WITHOUT EXPRESS WRITTEN CONSENT.

DO NOT SCALE DRAWINGS

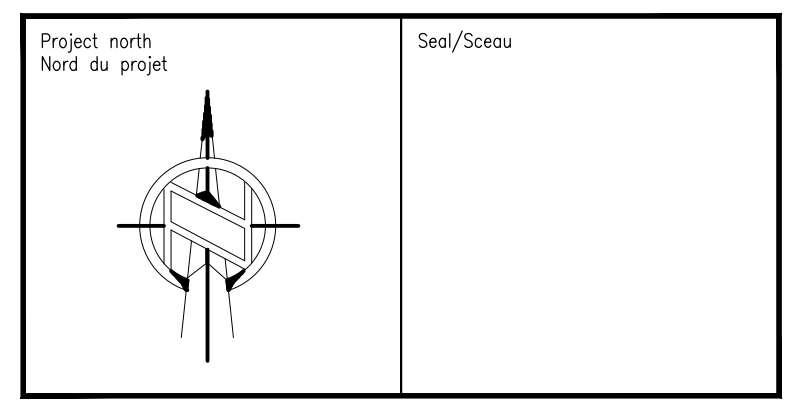
L'INGÉNIEUR DÉCLINE TOUTE RESPONSABILITÉ DÉCOULANT DE PROBLÈMES FAISANT SUITE AU NON RESPECT DES PLANS, DES SPÉCIFICATIONS ET DE L'INTENTION DU CONCEPTEUR D'ÊTRE INDICÉ OU DE TOUTES LES PROBLÈMES POUVANT RÉSULTER DU DÉFAUT D'OBTENIR ET / OU DE SUIVRE LES CONSEILS DE L'INGÉNIEUR EN CE QUI CONCERNE LES ERREURS, OMISSIONS, INCONSISTANCES, AMBIGUITÉS OU CONFLITS ALLÉGUÉS.

CE Dessin est la propriété littéraire de GOODKEY WEEDMARK & ASSOCIATES LIMITED ET TOUTS LES DROITS SONT RÉSERVÉS. L'UTILISATION EST INTERDITE SANS LE CONSENTEMENT ÉCRIT DE L'AUTEUR.

NE PAS MESURER LES DESSINS À L'ÉCHELLE

Goodkey Weedmark
Consulting Engineers

GOODKEY WEEDMARK & ASSOCIATES LIMITED
1688 Woodward Dr. Ottawa Ontario Canada K2C 3R8
613 727-5111 Voice
613 727-5115 Fax
www.gweal.com Web



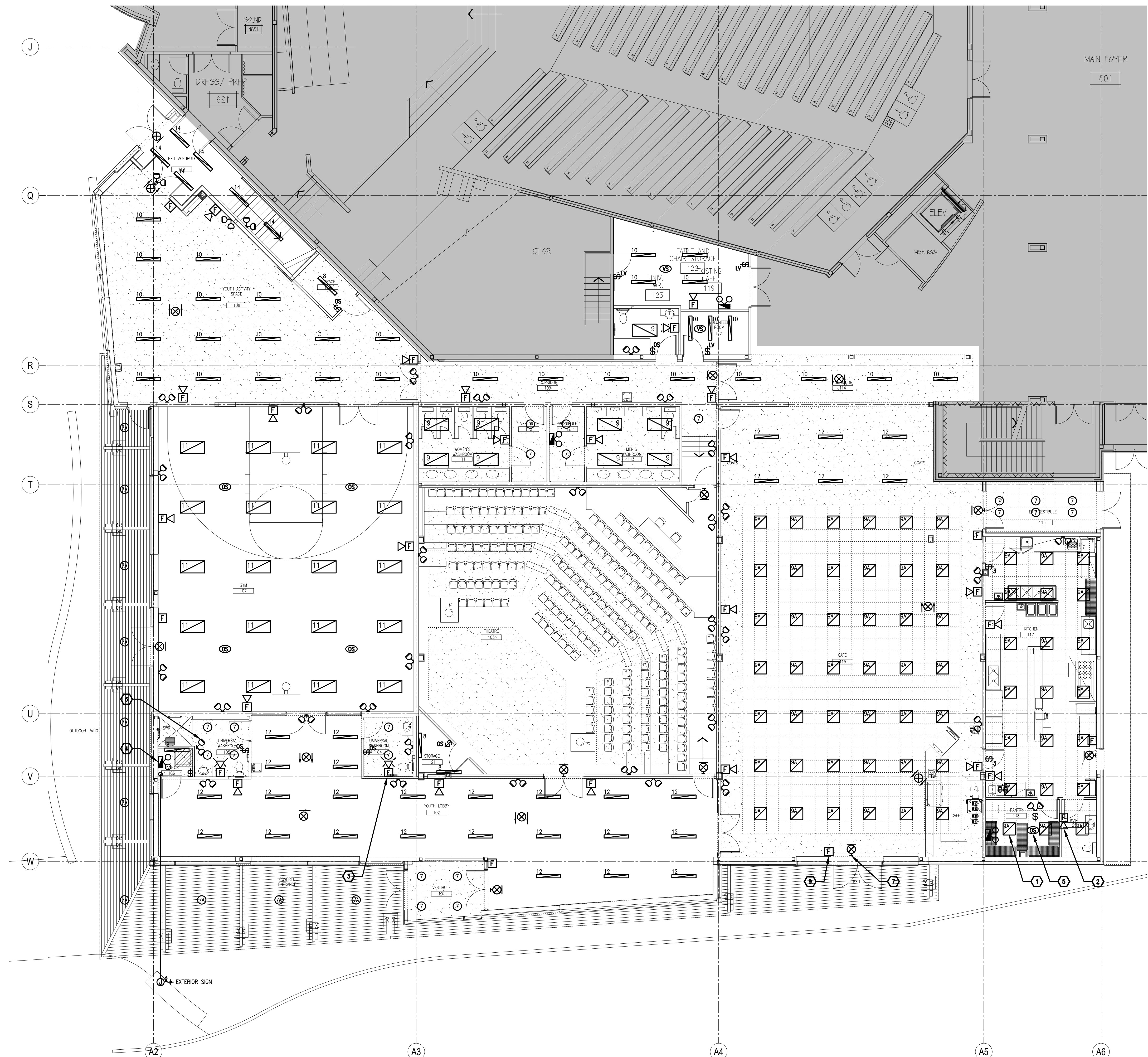
NEW WORK CHILDREN'S EDUCATION WING
1 E101 1:100

Project/Projet
WOODVALE PENTECOSTAL CHURCH RENOVATION

Drawing title/Titre du dessin
ELECTRICAL GROUND FLOOR (LEVEL 1) LIGHTING & FIRE ALARM NEW WORK

Scale/Echelle	AS NOTED	Project no./No. du projet	2021-284
Design by/Conçu par	J. MOFFAT	Drawing/Dessin	E101
Drawn by/Dessiné par	C. BEHAN	Examined by/Examiné par	
Date	November 21	Revision no.	Acad file/Fichier:

16 OF



- DRAWING NOTES**
- 1 TYPICAL: PROVIDE NEW LIGHT FIXTURE C/W CONDUIT AND WIRE AND CONNECT TO LIGHTING CIRCUIT AND LIGHTING CONTROLS SERVING THE AREA.
 - 2 TYPICAL: PROVIDE NEW FIRE ALARM HORN C/W CONDUIT AND WIRE AND CONNECT TO FIRE ALARM CIRCUIT SERVING THE AREA.
 - 3 TYPICAL: PROVIDE NEW FIRE ALARM HORN/STROBE C/W CONDUIT AND WIRE AND CONNECT TO FIRE ALARM CIRCUIT SERVING THE AREA.
 - 4 TYPICAL: PROVIDE NEW EMERGENCY BATTERY UNIT C/W CONDUIT AND WIRE AND CONNECT TO LIGHTING CIRCUIT SERVING THE AREA.
 - 5 TYPICAL: PROVIDE NEW LIGHTING CONTROLS C/W CONDUIT AND WIRE AND CONNECT TO LIGHTING FIXTURES AND CIRCUIT SERVING THE AREA.
 - 6 TYPICAL: PROVIDE NEW DUAL REMOTE HEAD C/W CONDUIT AND WIRE AND CONNECT TO EMERGENCY BATTERY UNIT SERVING THE AREA.
 - 7 TYPICAL: PROVIDE NEW EMERGENCY EXIT SIGN C/W CONDUIT AND WIRE AND CONNECT TO EMERGENCY BATTERY UNIT AND CIRCUIT SERVING THE AREA.
 - 8 TYPICAL: PROVIDE NEW LIGHT FIXTURE C/W CONDUIT AND WIRE AND CONNECT TO UN-SWITCHED NIGHT LIGHTING CIRCUIT.
 - 9 TYPICAL: PROVIDE NEW FIRE ALARM PULL STATION C/W CONDUIT AND WIRE AND CONNECT TO FIRE ALARM CIRCUIT SERVING THE AREA.

Client

DATE	REVISION	REF
2021-11-12	ISSUED FOR 70% REVIEW	-
2021-10-01	ISSUED FOR 66% COSTING	-
2021-08-27	ISSUED FOR 66% REVIEW	-
2021-06-18	ISSUED FOR 33% REVIEW	-

THE ENGINEER WAIVES ANY AND ALL RESPONSIBILITY AND LIABILITY FOR PROBLEMS WHICH ARISE FROM FAILURE TO FOLLOW THESE PLANS, SPECIFICATIONS AND THE DESIGN INTENT THEY CONVEY, OR FOR PROBLEMS WHICH ARISE FROM OTHER FAILURE TO OBTAIN AND / OR FOLLOW THE ENGINEER'S GUIDANCE WITH RESPECT TO ANY ERRORS, OMISSIONS, INCONSISTENCIES, AMBIGUITIES OR CONFLICTS WHICH ARE ALLEGED.

THIS DRAWING IS THE PROPERTY OF GOODKEY WEEDMARK & ASSOCIATES LIMITED AND ALL COPYRIGHTS ARE RESERVED. NO USE OF THIS DRAWING MAY BE MADE WITHOUT EXPRESS WRITTEN CONSENT.

DO NOT SCALE DRAWINGS

L'INGÉNIEUR DÉCLINE TOUTE RESPONSABILITÉ DÉCOULANT DE PROBLÈMES FAISANT SUITE AU NON RESPECT DES PLANS, DES SPÉCIFICATIONS ET DE L'INTENTION DU CONCEPTEUR, D'UN ÉCART OU DE TOUTES LES PROBLÈMES POUVAIENT RÉSULTER DU DÉFAUT D'OBTENIR ET / OU DE SUIVRE LES CONSEILS DE L'INGÉNIEUR EN CE QUI CONCERNE LES ERREURS, OMISSIONS, INCONSISTANCES, AMBIGUITÉS OU CONFLITS ALLÉGUÉS.

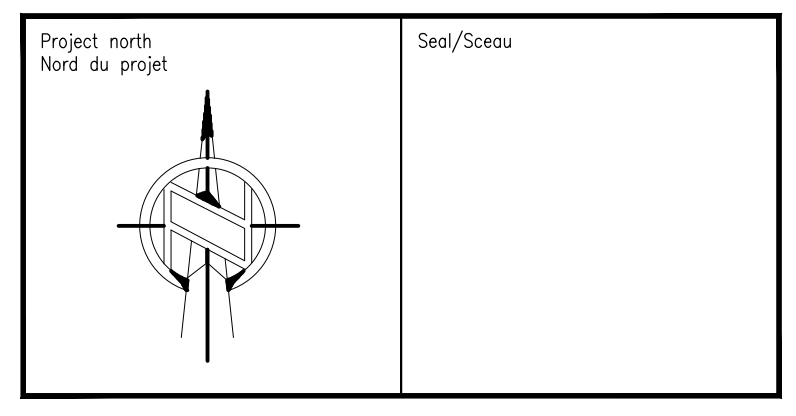
CE Dessin est la propriété littéraire de Goodkey Weedmark & Associates Limited et tous les droits sont réservés. L'utilisation est interdite sans le consentement écrit de l'auteur.

NE PAS MESURER LES DESSINS À L'ÉCHELLE

Goodkey Weedmark
Consulting Engineers

GOODKEY WEEDMARK & ASSOCIATES LIMITED
1688 Woodward Dr. Ottawa Ontario Canada K2C 3R8

613 727-5111 Voice
613 727-5115 Fax
www.gweal.com Web



Project/Projet
WOODVALE PENTECOSTAL CHURCH RENOVATION

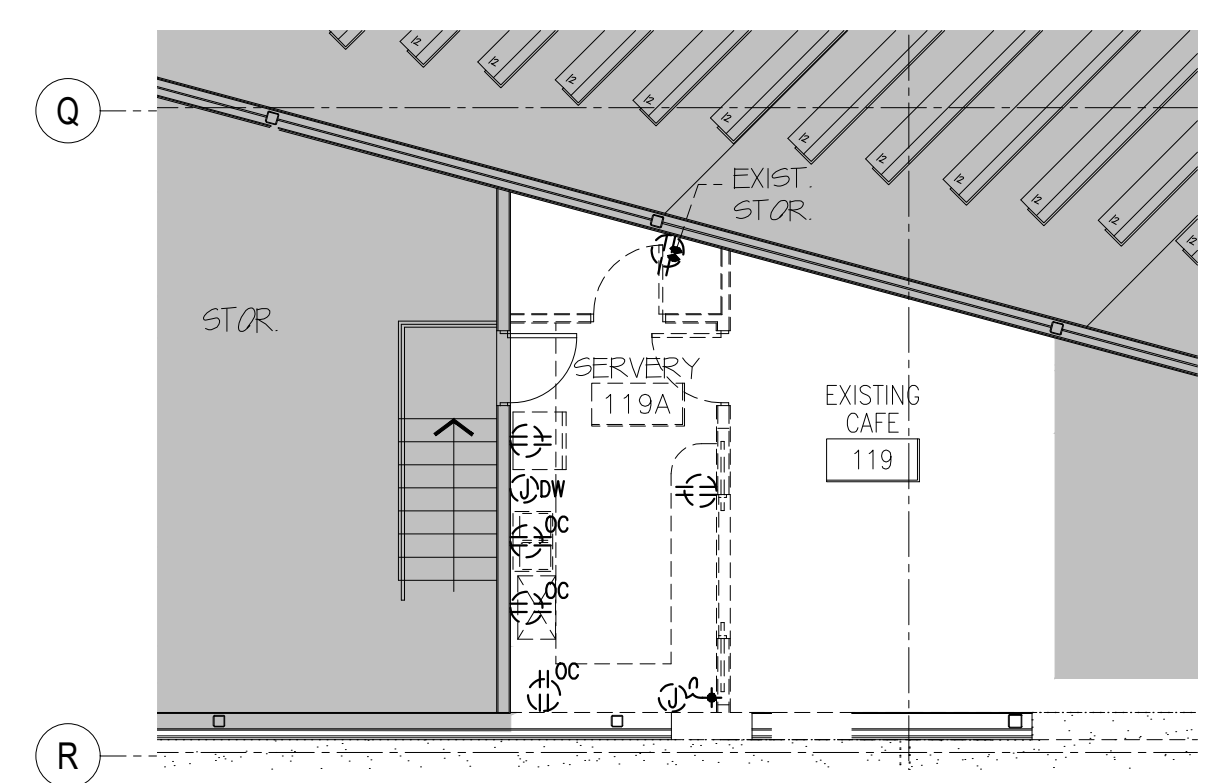
Drawing title/Titre du dessin
**ELECTRICAL
GROUND FLOOR (LEVEL 1) ADDITION
LIGHTING & FIRE ALARM
NEW WORK**

Scale Échelle	AS NOTED	Project no./No. du projet 2021-284
Design by Conçu par	J. MOFFAT	Drawing/Dessin
Drawn by Dessiné par	C. BEHAN	E102
Reviewed by Examiné par	J. MOFFAT	
Date	November 21	Revision no: Acad file/Fichier:

1 NEW WORK
E102 1:100



1
E103 1:100
DEMOLITION WORK
CHILDREN'S EDUCATION WING



2
E103 1:100
DEMOLITION WORK
TABLE AND CHAIR STORAGE

- DRAWING NOTES**
- ① TYPICAL: DISCONNECT AND REMOVE RECEPTACLE C/W CONDUIT, WIRING BACK TO SOURCE AND MAKE SAFE.
 - ② TYPICAL: DISCONNECT AND REMOVE EXISTING TELECOM ROUGH-IN C/W CONDUIT AND WIRE BACK TO SOURCE AND MAKE SAFE.

Client

DATE	REVISION	REF
2021-11-12	ISSUED FOR 70% REVIEW	-
2021-10-01	ISSUED FOR 66% COSTING	-
2021-08-27	ISSUED FOR 66% REVIEW	-
2021-06-18	ISSUED FOR 33% REVIEW	-

THE ENGINEER WAIVES ANY AND ALL RESPONSIBILITY AND LIABILITY FOR PROBLEMS WHICH ARISE FROM FAILURE TO FOLLOW THESE PLANS, SPECIFICATIONS AND THE DESIGN INTENT THEY CONVEY, OR FOR PROBLEMS WHICH ARISE FROM OTHER FAILURE TO OBTAIN AND / OR FOLLOW THE ENGINEER'S GUIDANCE WITH RESPECT TO ANY ERRORS, OMISSIONS, INCONSISTENCIES, AMBIGUITIES OR CONFLICTS WHICH ARE ALLEGED.

THIS DRAWING IS THE PROPERTY OF GOODKEY WEEDMARK & ASSOCIATES LIMITED AND ALL COPYRIGHTS ARE RESERVED. NO USE OF THIS DRAWING MAY BE MADE WITHOUT EXPRESS WRITTEN CONSENT.

DO NOT SCALE DRAWINGS

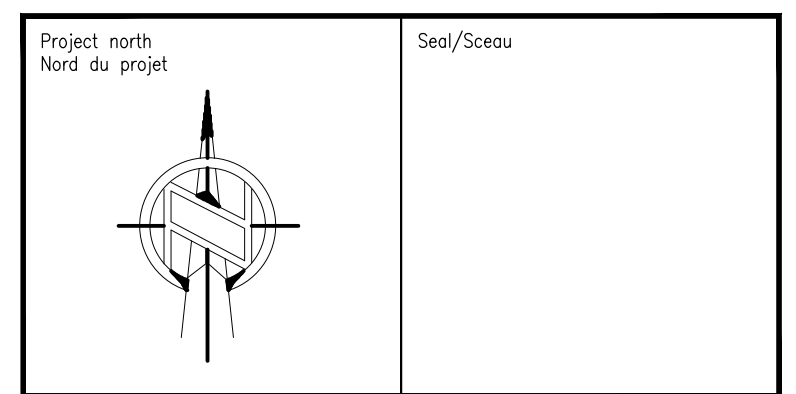
L'INGÉNIEUR DÉCLINE TOUTE RESPONSABILITÉ DÉCOULANT DE PROBLÈMES FAISANT SUITE AU NON RESPECT DES PLANS, DES SPÉCIFICATIONS ET DE L'INTENTION DU CONCEPTEUR QU'ILS INDIQUENT OU DE TOUTS LES PROBLÈMES POUVAANT RÉSULTER DU DÉFAUT D'OBTENIR ET / OU DE SUIVRE LES CONSEILS DE L'INGÉNIEUR EN CE QUI CONCERNE LES ERREURS, OMISSIONS, INCONSISTANCES, AMBIGUITÉS OU CONFLITS ALLÉGUÉS.

CE Dessin EST LA PROPRIÉTÉ LITTÉRAIRE DE GOODKEY WEEDMARK & ASSOCIATES LIMITED ET TOUTS LES DROITS SONT RÉSERVÉS. L'UTILISATION EST INTERDITE SANS LE CONSENTEMENT ÉCRIT DE L'AUTEUR.

NE PAS MESURER LES DESSINS À L'ÉCHELLE

Goodkey Weedmark
Consulting Engineers

GOODKEY WEEDMARK & ASSOCIATES LIMITED
1688 Woodward Dr. Ottawa Ontario Canada K2C 3R8
613 727-5111 Voice
613 727-5115 Fax
www.gweal.com Web



Project/Projet
WOODVALE PENTECOSTAL CHURCH RENOVATION

Drawing title/Titre du dessin
**ELECTRICAL
GROUND FLOOR (LEVEL 1)
POWER & SYSTEMS
DEMOLITION WORK**

Scale Échelle	AS NOTED 2021-284	Project no./No. du projet 2021-284
Design by Conçu par	J. MOFFAT	Drawing/Dessin
Drawn by Dessiné par	C. BEHAN	E103 OF 16
Reviewed by Examiné par	J. MOFFAT	
Date Date	November 21	Revision no. Acad file/Fichier:



- DRAWING NOTES**
- 1 PROVIDE A 5-15R GFI RECEPTACLE UNDER SINK FOR SOAP DISPENSER CONNECTION. COORDINATE LOCATION WITH GENERAL CONTRACTOR.
 - 2 TYPICAL: NEW UNIVERSAL WASHROOM ACCESS SYSTEM PROVIDED BY GENERAL TRADES. PROVIDE 120V/15A CIRCUIT TO AUTOMATIC DOOR OPERATOR AND TO SYSTEM POWER SUPPLY. PROVIDE CONDUITS, JUNCTION BOXES AND BACK BOXES. REFER TO DETAIL 1/E1 FOR ADDITIONAL INFORMATION.
 - 3 AT THIS LOCATION THERE ARE 2 X 53MM CONDUIT TO BE RELOCATED (1 POWER, 1 DATA).
 - 4 TYPICAL: PROVIDE NEW RECEPTACLE C/W CONDUIT AND WIRE AND CONNECT TO CIRCUIT AS INDICATED.

1
E104
 1:100
NEW WORK CHILDREN'S EDUCATION WING

Client

DATE	REVISION	REF
2021-11-12	ISSUED FOR 70% REVIEW	-
2021-10-01	ISSUED FOR 66% COSTING	-
2021-08-27	ISSUED FOR 66% REVIEW	-
2021-06-18	ISSUED FOR 33% REVIEW	-

THE ENGINEER WAIVES ANY AND ALL RESPONSIBILITY AND LIABILITY FOR PROBLEMS WHICH ARISE FROM FAILURE TO FOLLOW THESE PLANS, SPECIFICATIONS AND THE DESIGN INTENT THEY CONVEY, OR FOR PROBLEMS WHICH ARISE FROM OTHER FAILURE TO OBTAIN AND / OR FOLLOW THE ENGINEER'S GUIDANCE WITH RESPECT TO ANY ERRORS, OMISSIONS, INCONSISTENCIES, AMBIGUITIES OR CONFLICTS WHICH ARE ALLEGED.

THIS DRAWING IS THE PROPERTY OF GOODKEY WEEDMARK & ASSOCIATES LIMITED AND ALL COPYRIGHTS ARE RESERVED. NO USE OF THIS DRAWING MAY BE MADE WITHOUT EXPRESS WRITTEN CONSENT.

DO NOT SCALE DRAWINGS

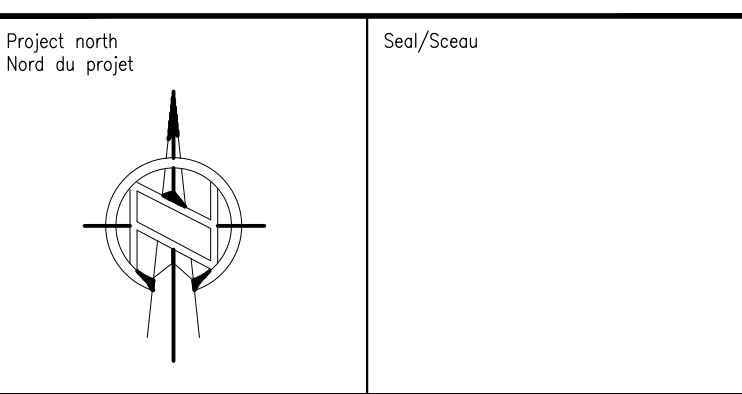
L'INGÉNIEUR DÉCLINE TOUTE RESPONSABILITÉ DÉCOULANT DE PROBLÈMES FAISANT SUITE AU NON RESPECT DES PLANS, DES SPÉCIFICATIONS ET DE L'INTENTION DU CONCEPTEUR, OÙ ILS INDIQUENT OU DE TOUTS LES PROBLÈMES POUVAUT RÉSULTER DU DÉFAUT D'OBTENIR ET / OU DE SUIVRE LES CONSEILS DE L'INGÉNIEUR EN CE QUI CONCERNE LES ERREURS, OMISSIONS, INCONSISTANCES, AMBIGUITÉS OU CONFLITS ALLÉGUÉS.

CE Dessin est la propriété littéraire de GOODKEY WEEDMARK & ASSOCIATES LIMITED ET TOUTS LES DROITS SONT RÉSERVÉS. L'UTILISATION EST INTERDITE SANS LE CONSENTEMENT ÉCRIT DE L'AUTEUR.

NE PAS MESURER LES DESSINS À L'ÉCHELLE

Goodkey Weedmark Consulting Engineers

GOODKEY WEEDMARK & ASSOCIATES LIMITED
 1688 Woodward Dr. Ottawa Ontario Canada K2C 3R8
 613 727-5111 Voice
 613 727-5115 Fax
 www.gweal.com Web



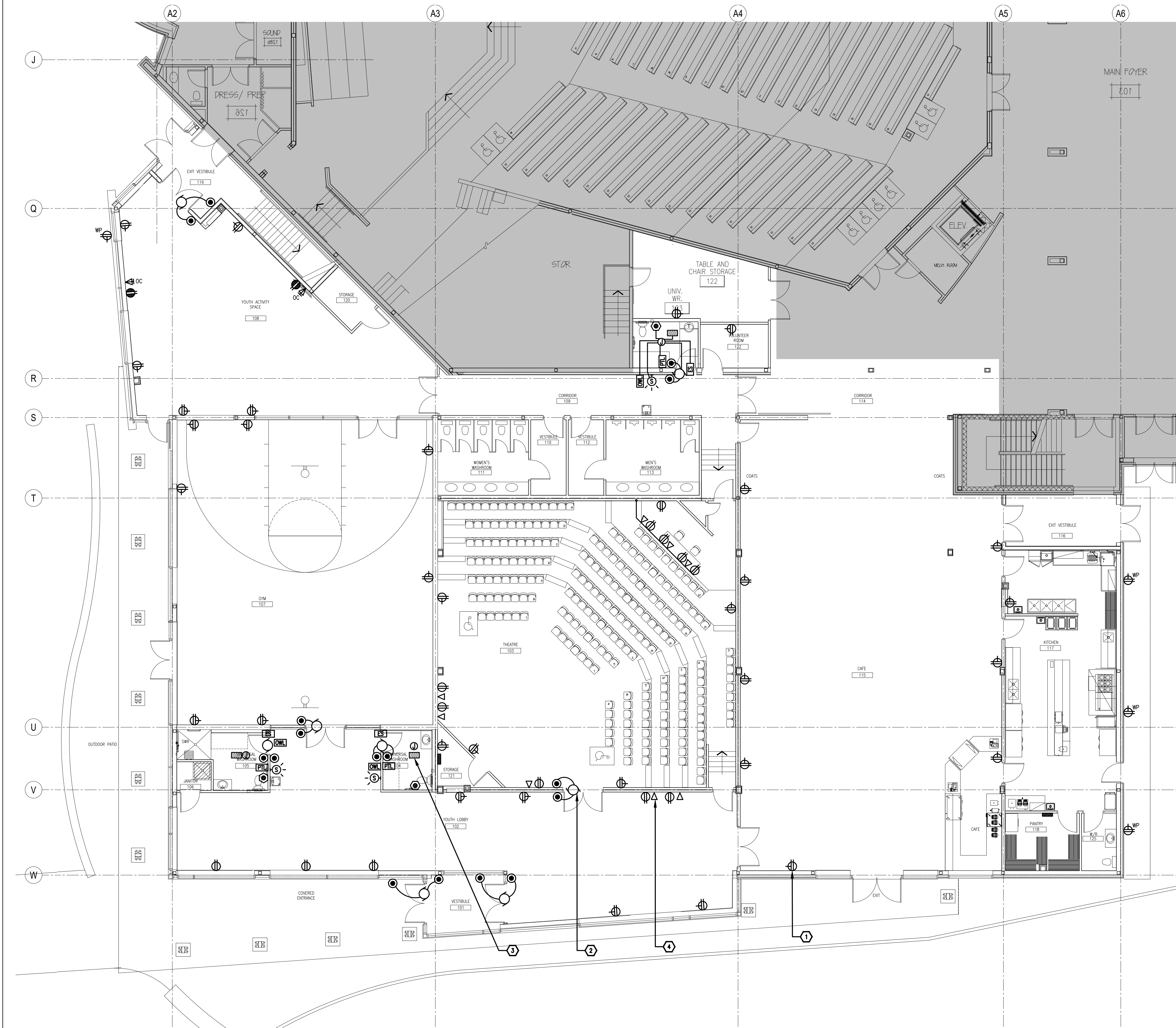
Project/Projet
WOODVALE PENTECOSTAL CHURCH RENOVATION

Drawing title/Titre du dessin
ELECTRICAL GROUND FLOOR (LEVEL 1) POWER & SYSTEMS NEW WORK

Scale / Échelle	AS NOTED	Project no./No. du projet	2021-284
Design by	J. MOFFAT	Drawn by	C. BEHAN
Drawn by	C. BEHAN	Examined by	J. MOFFAT
Examined by	J. MOFFAT	Date	November 21

E104
 OF 16

Revision no: -
 Acad file/Fichier: -



- DRAWING NOTES**
- ① TYPICAL: PROVIDE NEW RECEPTACLE C/W CONDUIT AND WIRE AND CONNECT TO CIRCUIT AS INDICATED.
 - ② TYPICAL: NEW BARRIER FREE OPERATOR, C/W WIRELESS PADDLE ACTUATORS, PROVIDED BY GENERAL TRADES. PROVIDE 120V/15A CIRCUIT TO OPERATOR. PROVIDE CONDUITS, JUNCTION BOXES AND BACK BOXES.
 - ③ TYPICAL: NEW UNIVERSAL WASHROOM ACCESS SYSTEM PROVIDED BY GENERAL TRADES. PROVIDE 120V/15A CIRCUIT TO AUTOMATIC DOOR OPERATOR AND TO SYSTEM POWER SUPPLY. PROVIDE CONDUITS, JUNCTION BOXES AND BACK BOXES. REFER TO DETAIL 1/E1 FOR ADDITIONAL INFORMATION.
 - ④ TYPICAL: PROVIDE NEW TELECOM ROUGH-IN C/W CONDUIT AND CONNECT.

Client

DATE	REVISION	REF
2021-11-12	ISSUED FOR 70% REVIEW	-
2021-10-01	ISSUED FOR 66% COSTING	-
2021-08-27	ISSUED FOR 66% REVIEW	-
2021-06-18	ISSUED FOR 33% REVIEW	-

THE ENGINEER WAIVES ANY AND ALL RESPONSIBILITY AND LIABILITY FOR PROBLEMS WHICH ARISE FROM FAILURE TO FOLLOW THESE PLANS, SPECIFICATIONS AND THE DESIGN INTENT THEY CONVEY, OR FOR PROBLEMS WHICH ARISE FROM OTHER FAILURE TO OBTAIN AND / OR FOLLOW THE ENGINEER'S GUIDANCE WITH RESPECT TO ANY ERRORS, OMISSIONS, INCONSISTENCIES, AMBIGUITIES OR CONFLICTS WHICH ARE ALLEGED.

THIS DRAWING IS THE PROPERTY OF GOODKEY WEEDMARK & ASSOCIATES LIMITED AND ALL COPYRIGHTS ARE RESERVED. NO USE OF THIS DRAWING MAY BE MADE WITHOUT EXPRESS WRITTEN CONSENT.

DO NOT SCALE DRAWINGS

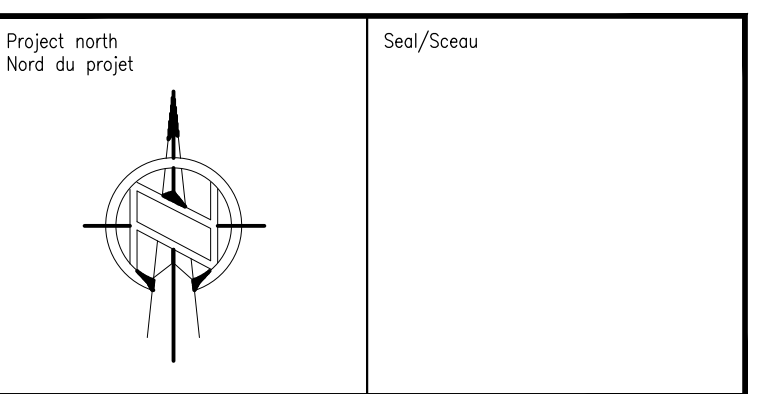
L'INGÉNIEUR DÉCLINE TOUTE RESPONSABILITÉ DÉCOULANT DE PROBLÈMES FAISANT SUITE AU NON RESPECT DES PLANS, DES SPÉCIFICATIONS ET DE L'INTENTION DU CONCEPTEUR, OÙ LES INDICATEURS OU DE TOUTES LES PROBLÈMES POUVAIENT RÉSULTER DU DÉFAUT D'OBTENIR ET / OU DE SUIVRE LES CONSEILS DE L'INGÉNIEUR EN CE QUI CONCERNE LES ERREURS, OMISSIONS, INCONSISTANCES, AMBIGUITÉS OU CONFLITS ALLÉGUÉS.

CE Dessin est la propriété littéraire de Goodkey Weedmark & Associates Limited et tous les droits sont réservés. L'utilisation est interdite sans le consentement écrit de l'auteur.

NE PAS MESURER LES DESSINS À L'ÉCHELLE

Goodkey Weedmark
Consulting Engineers

GOODKEY WEEDMARK & ASSOCIATES LIMITED
1688 Woodward Dr. Ottawa Ontario Canada K2C 3R8
613 727-5111 Voice
613 727-5115 Fax
www.gweal.com Web

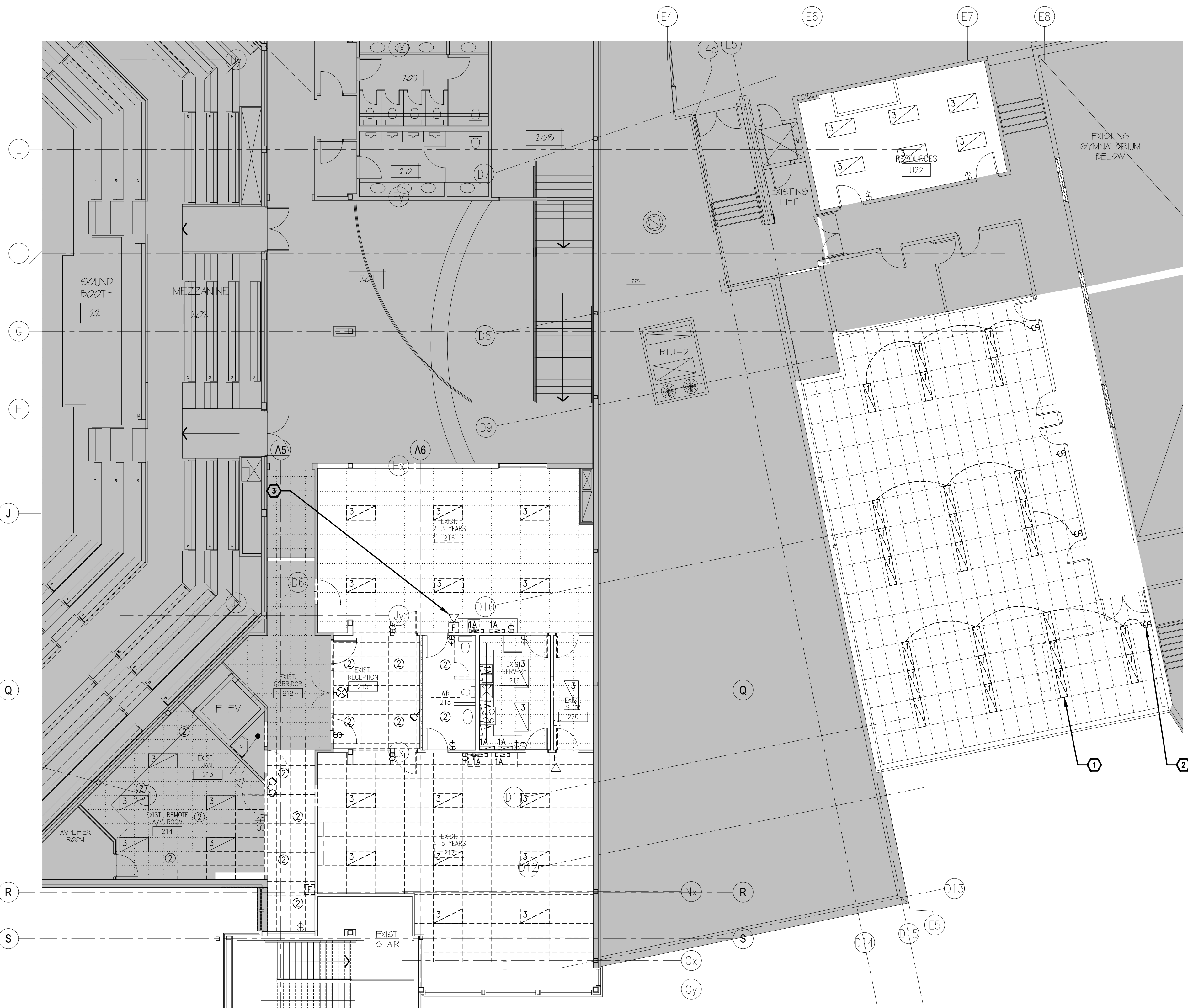


Project/Projet
WOODVALE PENTECOSTAL CHURCH RENOVATION

Drawing title/Titre du dessin
ELECTRICAL GROUND FLOOR (LEVEL 1 ADDITION) POWER & SYSTEMS NEW WORK

Scale Échelle	AS NOTED	Project no./No. du projet 2021-284
Design by Conçu par	J. MOFFAT	Drawing/Dessin
Drawn by Dessiné par	C. BEHAN	E105 OF 16
Reviewed by Examiné par	J. MOFFAT	
Date Date	November 21	Revision no. Acad file/Fichier:

NEW WORK ADDITION LEVEL 1
1
E105
1:100



- DRAWING NOTES**
- ① TYPICAL: DISCONNECT AND REMOVE EXISTING LIGHT FIXTURE C/W CONDUIT, WIRING AND MAKE SAFE.
 - ② TYPICAL: DISCONNECT AND REMOVE EXISTING LIGHTING CONTROLS C/W CONDUIT AND WIRE AS BACK TO SOURCE AND MAKE SAFE.
 - ③ TYPICAL: DISCONNECT AND REMOVE EXISTING FIRE ALARM HORN C/W CONDUIT, WIRING AND MAKE SAFE.

1
E200
1:100
DEMOLITION WORK

Client

DATE	REVISION	REF
2021-11-12	ISSUED FOR 70% REVIEW	-
2021-10-01	ISSUED FOR 66% COSTING	-
2021-08-27	ISSUED FOR 66% REVIEW	-
2021-06-18	ISSUED FOR 33% REVIEW	-

THE ENGINEER WAIVES ANY AND ALL RESPONSIBILITY AND LIABILITY FOR PROBLEMS WHICH ARISE FROM FAILURE TO FOLLOW THESE PLANS, SPECIFICATIONS AND THE DESIGN INTENT THEY CONVEY, OR FOR PROBLEMS WHICH ARISE FROM OTHER FAILURE TO OBTAIN AND / OR FOLLOW THE ENGINEER'S GUIDANCE WITH RESPECT TO ANY ERRORS, OMISSIONS, INCONSISTENCIES, AMBIGUITIES OR CONFLICTS WHICH ARE ALLEGED.

THIS DRAWING IS THE PROPERTY OF GOODKEY WEEDMARK & ASSOCIATES LIMITED AND ALL COPYRIGHTS ARE RESERVED. NO USE OF THIS DRAWING MAY BE MADE WITHOUT EXPRESS WRITTEN CONSENT.

DO NOT SCALE DRAWINGS

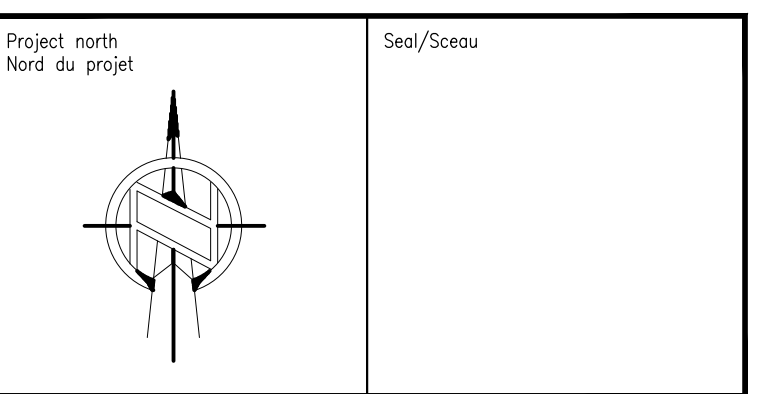
L'INGÉNIEUR DÉCLINE TOUTE RESPONSABILITÉ DÉCOULANT DE PROBLÈMES FAISANT SUITE AU NON RESPECT DES PLANS, DES SPÉCIFICATIONS ET DE L'INTENTION DU CONCEPT OÙ/ILS INDIQUENT OU DE TOUTES LES PROBLÈMES POUVAIENT RÉSULTER DU DÉFAUT D'OBTENIR ET / OU DE SUIVRE LES CONSEILS DE L'INGÉNIEUR EN CE QUI CONCERNE LES ERREURS, OMISSIONS, INCONSISTANCES, AMBIGUITÉS OU CONFLITS ALLÉGUÉS.

CE Dessin est la propriété littéraire de GOODKEY WEEDMARK & ASSOCIATES LIMITED ET TOUTS LES DROITS SONT RÉSERVÉS. L'UTILISATION EST INTERDITE SANS LE CONSENTEMENT ÉCRIT DE L'AUTEUR.

NE PAS MESURER LES DESSINS À L'ÉCHELLE

Goodkey Weedmark
Consulting Engineers

GOODKEY WEEDMARK & ASSOCIATES LIMITED
1688 Woodward Dr. Ottawa Ontario Canada K2C 3R8
613 727-5111 Voice
613 727-5115 Fax
www.gweal.com Web



Project/Projet
WOODVALE PENTECOSTAL CHURCH RENOVATION

Drawing title/Titre du dessin
ELECTRICAL LEVEL 2 LIGHTING & FIRE ALARM DEMOLITION WORK

Scale AS NOTED
Échelle AS NOTED

Project no./No. du projet
2021-284

Design by J. MOFFAT
Conçu par J. MOFFAT

Drawn by C. BEHAN
Dessiné par C. BEHAN

Reviewed by J. MOFFAT
Examiné par J. MOFFAT

Date November 21
Date November 21

Revision no. / Acad file/Fichier: /

E200
OF 16



- DRAWING NOTES**
- 1 TYPICAL: PROVIDE NEW LIGHT FIXTURE C/W CONDUIT AND WIRE AND CONNECT TO LIGHTING CIRCUIT AND LIGHTING CONTROLS SERVING THE AREA.
 - 2 TYPICAL: PROVIDE NEW FIRE ALARM HORN. PROVIDE NEW CONDUIT AND WIRE AND CONNECT TO FIRE ALARM CIRCUIT SERVING THE AREA.
 - 3 TYPICAL: PROVIDE NEW LIGHT FIXTURE C/W CONDUIT AND WIRE AND CONNECT TO UN-SWITCHED NIGHT LIGHTING CIRCUIT.
 - 4 TYPICAL: PROVIDE NEW LIGHTING CONTROLS C/W CONDUIT AND WIRE AND CONNECT TO LIGHTING FIXTURES AND CIRCUIT SERVING THE AREA.
 - 5 TYPICAL: PROVIDE NEW EMERGENCY EXIT SIGN C/W CONDUIT AND WIRE AND CONNECT TO EMERGENCY BATTERY UNIT AND CIRCUIT SERVING THE AREA.

1 NEW WORK
E201 1:100

Client

DATE	REVISION	REF
2021-11-12	ISSUED FOR 70% REVIEW	-
2021-10-01	ISSUED FOR 66% COSTING	-
2021-08-27	ISSUED FOR 66% REVIEW	-
2021-06-18	ISSUED FOR 33% REVIEW	-

THE ENGINEER WAIVES ANY AND ALL RESPONSIBILITY AND LIABILITY FOR PROBLEMS WHICH ARISE FROM FAILURE TO FOLLOW THESE PLANS, SPECIFICATIONS AND THE DESIGN INTENT THEY CONVEY, OR FOR PROBLEMS WHICH ARISE FROM OTHER FAILURE TO OBTAIN AND / OR FOLLOW THE ENGINEER'S GUIDANCE WITH RESPECT TO ANY ERRORS, OMISSIONS, INCONSISTENCIES, AMBIGUITIES OR CONFLICTS WHICH ARE ALLEGED.

THIS DRAWING IS THE PROPERTY OF GOODKEY WEEDMARK & ASSOCIATES LIMITED AND ALL COPYRIGHTS ARE RESERVED. NO USE OF THIS DRAWING MAY BE MADE WITHOUT EXPRESS WRITTEN CONSENT.

DO NOT SCALE DRAWINGS

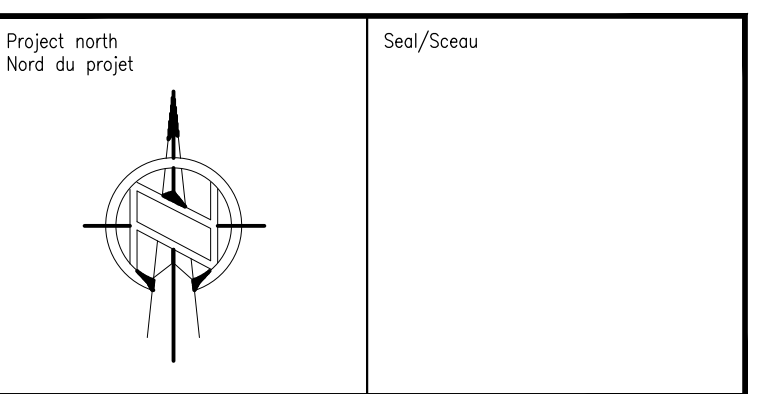
L'INGÉNIEUR DÉCLINE TOUTE RESPONSABILITÉ DÉCOULANT DE PROBLÈMES FAISANT SUITE AU NON RESPECT DES PLANS, DES SPÉCIFICATIONS ET DE L'INTENTION DU CONCEPTEUR, OÙ ILS INDIQUENT OU DE TOUTES LES PROBLÈMES POUVAIENT RÉSULTER DU DÉFAUT D'OBTENIR ET / OU DE SUIVRE LES CONSEILS DE L'INGÉNIEUR EN CE QUI CONCERNE LES ERREURS, OMISSIONS, INCONSISTANCES, AMBIGUITÉS OU CONFLITS ALLÉGUÉS.

CE Dessin est la propriété littéraire de GOODKEY WEEDMARK & ASSOCIATES LIMITED ET TOUTS LES DROITS SONT RÉSERVÉS. L'UTILISATION EST INTERDITE SANS LE CONSENTEMENT ÉCRIT DE L'AUTEUR.

NE PAS MESURER LES DESSINS À L'ÉCHELLE

Goodkey Weedmark
Consulting Engineers

GOODKEY WEEDMARK & ASSOCIATES LIMITED
1688 Woodward Dr. Ottawa Ontario Canada K2C 3R8
613 727-5111 Voice
613 727-5115 Fax
www.gweal.com Web



Project/Projet
WOODVALE PENTECOSTAL CHURCH RENOVATION

Drawing title/Titre du dessin
ELECTRICAL LEVEL 2 LIGHTING & FIRE ALARM NEW WORK

Scale Échelle	AS NOTED	Project no./No. du projet 2021-284
Design by Conçu par	J. MOFFAT	Drawing/Dessin
Drawn by Dessiné par	C. BEHAN	E201 OF 16
Reviewed by Examiné par	J. MOFFAT	
Date Date	November 21	Revision no: Acad file/Fichier:



- DRAWING NOTES**
- 1 TYPICAL: PROVIDE NEW LIGHT FIXTURE C/W CONDUIT AND WIRE AND CONNECT TO LIGHTING CIRCUIT AND LIGHTING CONTROLS SERVING THE AREA.
 - 2 TYPICAL: PROVIDE NEW FIRE ALARM HORN C/W CONDUIT AND WIRE AND CONNECT TO FIRE ALARM CIRCUIT SERVING THE AREA.
 - 3 TYPICAL: PROVIDE NEW FIRE ALARM HORN/STROBE C/W CONDUIT AND WIRE AND CONNECT TO FIRE ALARM CIRCUIT SERVING THE AREA.
 - 4 TYPICAL: PROVIDE NEW EMERGENCY BATTERY UNIT C/W CONDUIT AND WIRE AND CONNECT TO LIGHTING CIRCUIT SERVING THE AREA.
 - 5 TYPICAL: PROVIDE NEW LIGHTING CONTROLS C/W CONDUIT AND WIRE AND CONNECT TO LIGHTING FIXTURES AND CIRCUIT SERVING THE AREA.
 - 6 TYPICAL: PROVIDE NEW DUAL REMOTE HEAD C/W CONDUIT AND WIRE AND CONNECT TO EMERGENCY BATTERY UNIT SERVING THE AREA.
 - 7 TYPICAL: PROVIDE NEW EMERGENCY EXIT SIGN C/W CONDUIT AND WIRE AND CONNECT TO EMERGENCY BATTERY UNIT AND CIRCUIT SERVING THE AREA.

Client

DATE	REVISION	REF
2021-11-12	ISSUED FOR 70% REVIEW	-
2021-10-01	ISSUED FOR 66% COSTING	-
2021-08-27	ISSUED FOR 66% REVIEW	-
2021-06-18	ISSUED FOR 33% REVIEW	-

THE ENGINEER WAIVES ANY AND ALL RESPONSIBILITY AND LIABILITY FOR PROBLEMS WHICH ARISE FROM FAILURE TO FOLLOW THESE PLANS, SPECIFICATIONS AND THE DESIGN INTENT THEY CONVEY, OR FOR PROBLEMS WHICH ARISE FROM OTHER FAILURE TO OBTAIN AND / OR FOLLOW THE ENGINEER'S GUIDANCE WITH RESPECT TO ANY ERRORS, OMISSIONS, INCONSISTENCIES, AMBIGUITIES OR CONFLICTS WHICH ARE ALLEGED.

THIS DRAWING IS THE PROPERTY OF GOODKEY WEEDMARK & ASSOCIATES LIMITED AND ALL COPYRIGHTS ARE RESERVED. NO USE OF THIS DRAWING MAY BE MADE WITHOUT EXPRESS WRITTEN CONSENT.

DO NOT SCALE DRAWINGS

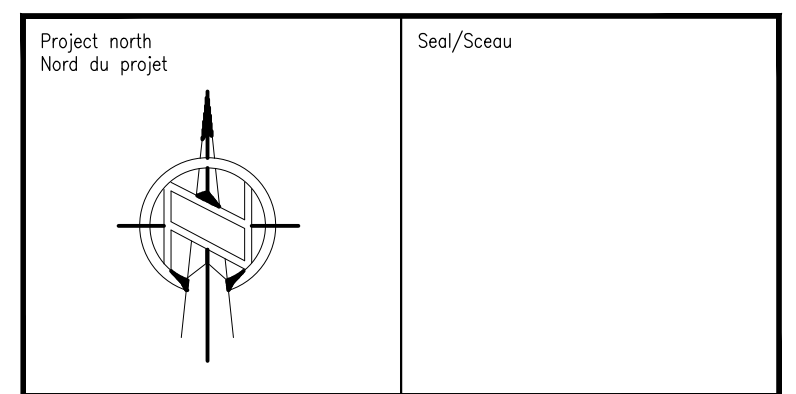
L'INGÉNIEUR DÉCLINE TOUTE RESPONSABILITÉ DÉCOULANT DE PROBLÈMES FAISANT SUITE AU NON RESPECT DES PLANS, DES SPÉCIFICATIONS ET DE L'INTENTION DU CONCEPTEUR, OÙ ILS INDIQUENT OU DE TOUTES LES PROBLÈMES POUVANT RÉSULTER DU DÉFAUT D'OBTENIR ET / OU DE SUIVRE LES CONSEILS DE L'INGÉNIEUR EN CE QUI CONCERNE LES ERREURS, OMISSIONS, INCONSISTANCES, AMBIGUITÉS OU CONFLITS ALLÉGUÉS.

CE DESSIN EST LA PROPRIÉTÉ LITTÉRAIRE DE GOODKEY WEEDMARK & ASSOCIATES LIMITED ET TOUTS LES DROITS SONT RÉSERVÉS. L'UTILISATION EST INTERDITE SANS LE CONSENTEMENT ÉCRIT DE L'AUTEUR.

NE PAS MESURER LES DESSINS À L'ÉCHELLE

Goodkey Weedmark
Consulting Engineers

GOODKEY WEEDMARK & ASSOCIATES LIMITED
1688 Woodward Dr. Ottawa Ontario Canada K2C 3R8
613 727-5111 Voice
613 727-5115 Fax
www.gweal.com Web

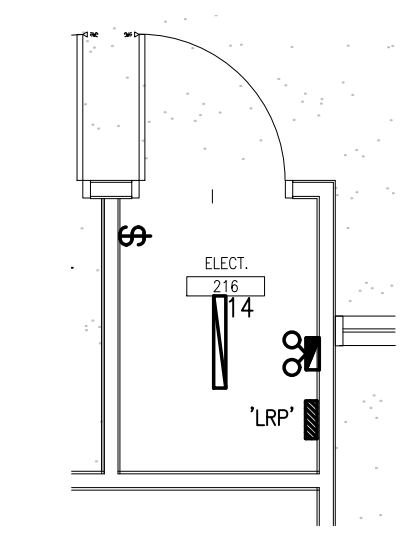


Project/Projet
WOODVALE PENTECOSTAL CHURCH RENOVATION

Drawing title/Titre du dessin
ELECTRICAL LEVEL 2 ADDITION LIGHTING & FIRE ALARM NEW WORK

Scale/Echelle	AS NOTED	Project no./No. du projet	2021-284
Design by/Conçu par	J. MOFFAT	Drawing/Dessin	E202
Drawn by/Dessiné par	C. BEHAN	Examined by/Examiné par	
Date	November 21	Revision no.	Acad file/Fichier:

1 NEW WORK
E202 1:100



2 ELEC. RM NEW WORK
E202 1:50



DRAWING NOTES

⬠ TYPICAL:
DISCONNECT AND REMOVE RECEPTACLE C/W CONDUIT, WIRING BACK TO SOURCE AND MAKE SAFE.

1
E203
DEMOLITION WORK
1:100

Client

DATE	REVISION	REF
2021-11-12	ISSUED FOR 70% REVIEW	-
2021-10-01	ISSUED FOR 66% COSTING	-
2021-08-27	ISSUED FOR 66% REVIEW	-
2021-06-18	ISSUED FOR 33% REVIEW	-

THE ENGINEER WAIVES ANY AND ALL RESPONSIBILITY AND LIABILITY FOR PROBLEMS WHICH ARISE FROM FAILURE TO FOLLOW THESE PLANS, SPECIFICATIONS AND THE DESIGN INTENT THEY CONVEY, OR FOR PROBLEMS WHICH ARISE FROM OTHER FAILURE TO OBTAIN AND / OR FOLLOW THE ENGINEER'S GUIDANCE WITH RESPECT TO ANY ERRORS, OMISSIONS, INCONSISTENCIES, AMBIGUITIES OR CONFLICTS WHICH ARE ALLEGED.

THIS DRAWING IS THE PROPERTY OF GOODKEY WEEDMARK & ASSOCIATES LIMITED AND ALL COPYRIGHTS ARE RESERVED. NO USE OF THIS DRAWING MAY BE MADE WITHOUT EXPRESS WRITTEN CONSENT.

DO NOT SCALE DRAWINGS

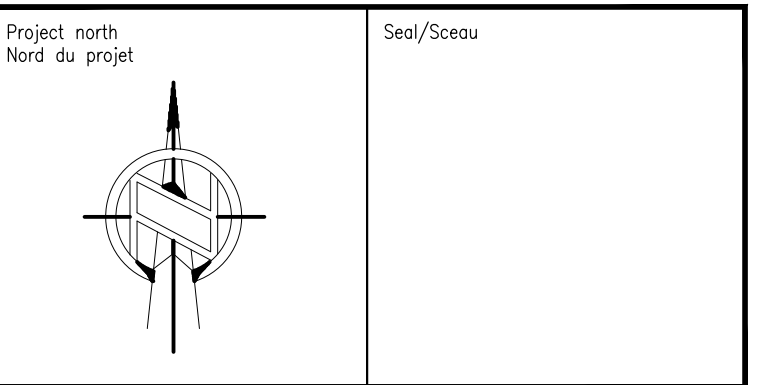
L'INGÉNIEUR DÉCLINE TOUTE RESPONSABILITÉ DÉCOULANT DE PROBLÈMES FAISANT SUITE AU NON RESPECT DES PLANS, DES SPÉCIFICATIONS ET DE L'INTENTION DU CONCEPTEUR OUTILS INDIQUÉS OU DE TOUTS LES PROBLÈMES POUVANT RÉSULTER DU DÉFAUT D'OBTENIR ET / OU DE SUIVRE LES CONSEILS DE L'INGÉNIEUR EN CE QUI CONCERNE LES ERREURS, OMISSIONS, INCONSISTANCES, AMBIGUITÉS OU CONFLITS ALLÉGUÉS.

CE Dessin EST LA PROPRIÉTÉ LITTÉRAIRE DE GOODKEY WEEDMARK & ASSOCIATES LIMITED ET TOUTS LES DROITS SONT RÉSERVÉS. L'UTILISATION EST INTERDITE SANS LE CONSENTEMENT ÉCRIT DE L'AUTEUR.

NE PAS MESURER LES DESSINS À L'ÉCHELLE

Goodkey Weedmark
Consulting Engineers

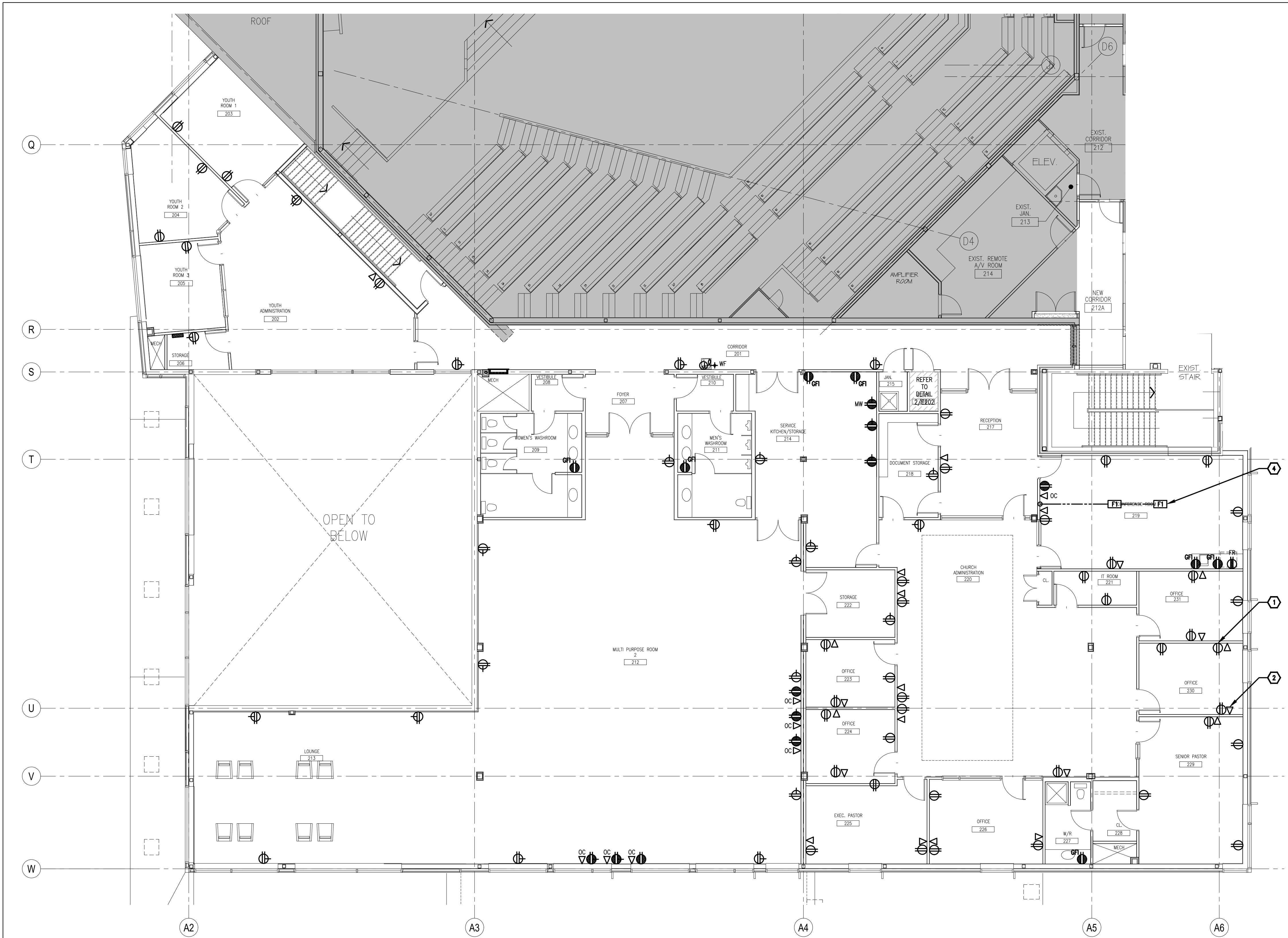
GOODKEY WEEDMARK & ASSOCIATES LIMITED
1688 Woodward Dr. Ottawa Ontario Canada K2C 3R8
613 727-5111 Voice
613 727-5115 Fax
www.gweal.com Web



Project/Projet
WOODVALE PENTECOSTAL CHURCH RENOVATION

Drawing title/Titre du dessin
ELECTRICAL LEVEL 2 POWER & SYSTEMS DEMOLITION

Scale Échelle	AS NOTED	Project no./No. du projet 2021-284
Design by Conçu par	J. MOFFAT	Drawing/Dessin
Drawn by Dessiné par	C. BEHAN	E203 OF 16
Reviewed by Examiné par	J. MOFFAT	
Date Date	November 21	Revision no: Acad file/Fichier:



- DRAWING NOTES**
- 1 TYPICAL: PROVIDE NEW RECEPTACLE C/W CONDUIT AND WIRE AND CONNECT TO NEW CIRCUIT AS INDICATED.
 - 2 TYPICAL: PROVIDE NEW TELECOM ROUGH-IN C/W CONDUIT.
 - 3 PROVIDE NEW 72 CIRCUIT 120/208V/3Ø/225A ELECTRICAL PANEL C/W NEW FEEDER AND CONNECT TO DISTRIBUTION PANEL.
 - 4 TYPICAL: PROVIDE NEW FLOOR MONUMENT (EQUAL TO: LEGRAND EVOLUTION SERIES) C/W CONDUIT AND WIRE AND CONNECT TO NEW CIRCUIT AS INDICATED.

Client

DATE	REVISION	REF
2021-11-12	ISSUED FOR 70% REVIEW	-
2021-10-01	ISSUED FOR 66% COSTING	-
2021-08-27	ISSUED FOR 66% REVIEW	-
2021-06-18	ISSUED FOR 33% REVIEW	-

THE ENGINEER WAIVES ANY AND ALL RESPONSIBILITY AND LIABILITY FOR PROBLEMS WHICH ARISE FROM FAILURE TO FOLLOW THESE PLANS, SPECIFICATIONS AND THE DESIGN INTENT THEY CONVEY, OR FOR PROBLEMS WHICH ARISE FROM OTHER FAILURE TO OBTAIN AND / OR FOLLOW THE ENGINEER'S GUIDANCE WITH RESPECT TO ANY ERRORS, OMISSIONS, INCONSISTENCIES, AMBIGUITIES OR CONFLICTS WHICH ARE ALLEGED.

THIS DRAWING IS THE PROPERTY OF GOODKEY WEEDMARK & ASSOCIATES LIMITED AND ALL COPYRIGHTS ARE RESERVED. NO USE OF THIS DRAWING MAY BE MADE WITHOUT EXPRESS WRITTEN CONSENT.

DO NOT SCALE DRAWINGS

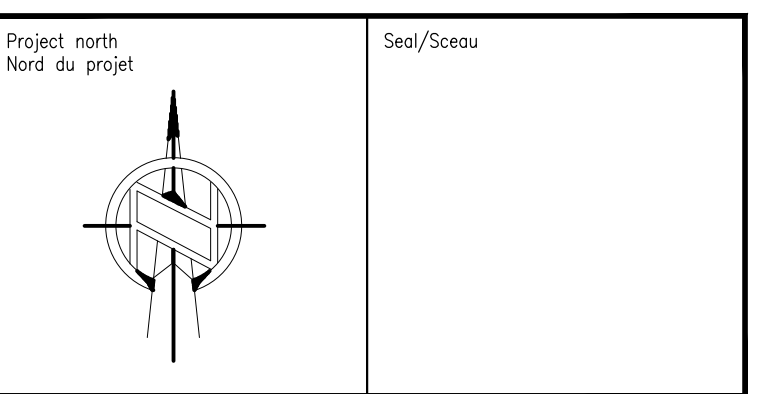
L'INGÉNIEUR DÉCLINE TOUTE RESPONSABILITÉ DÉCOULANT DE PROBLÈMES FAISANT SUITE AU NON RESPECT DES PLANS, DES SPÉCIFICATIONS ET DE L'INTENTION DU CONCEPTEUR, OUTRES INDICQUÉS OU DE TOUTS LES PROBLÈMES POUVANT RÉSULTER DU DÉFAUT D'OBTENIR ET / OU DE SUIVRE LES CONSEILS DE L'INGÉNIEUR EN CE QUI CONCERNE LES ERREURS, OMISSIONS, INCONSISTANCES, AMBIGUITÉS OU CONFLITS ALLÉGUÉS.

CE Dessin est la propriété littéraire de Goodkey Weedmark & Associates Limited et tous les droits sont réservés. L'utilisation est interdite sans le consentement écrit de l'auteur.

NE PAS MESURER LES DESSINS À L'ÉCHELLE

Goodkey Weedmark
Consulting Engineers

GOODKEY WEEDMARK & ASSOCIATES LIMITED
1688 Woodward Dr. Ottawa Ontario Canada K2C 3R8
613 727-5111 Voice
613 727-5115 Fax
www.gwal.com Web



Project/Projet

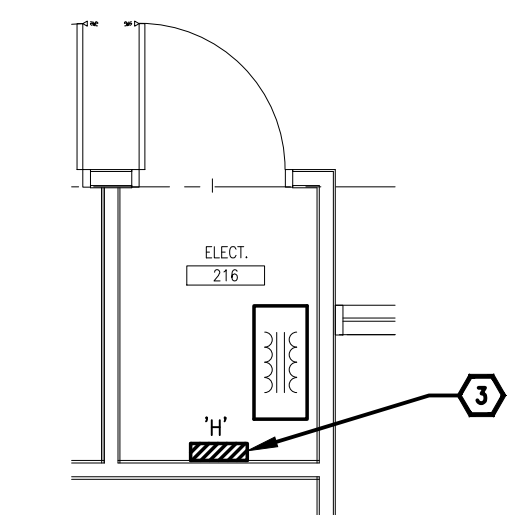
WOODVALE PENTECOSTAL CHURCH RENOVATION

Drawing title/Titre du dessin

ELECTRICAL LEVEL 2 ADDITION POWER & SYSTEMS NEW WORK

Scale/Echelle	AS NOTED	Project no./No. du projet	2021-284
Design by/Conçu par	J. MOFFAT	Drawing/Dessin	
Drawn by/Dessiné par	C. BEHAN	E205	OF 16
Reviewed by/Examiné par	J. MOFFAT		
Date	November 21	Revision no.	Acad file/Fichier:

1 NEW WORK
E205 1:100



2 ELEC. RM NEW WORK
E205 1:50