



1224 GARDINERS ROAD, SUITE 201
KINGSTON, ONTARIO
CANADA K7P 0G2
PHONE: 613-634-7373
WWW.WSP.COM

CONSULTANT:



CLIENT:

MUNICIPALITY OF NORTH GRENVILLE

CLIENT REF. # --
PROJECT:

NORTH GRENVILLE
POOL HOUSE

KEY PLAN

DISCLAIMER: THIS DRAWING AND DESIGN IS COPYRIGHT PROTECTED WHICH SHALL NOT BE USED, REPRODUCED OR REUSED WITHOUT WRITTEN PERMISSION BY WSP. THE CONTRACTOR SHALL CHECK AND VERIFY ALL DIMENSIONS AND UTILITY LOCATIONS AND REPORT ALL ERRORS AND OMISSIONS PRIOR TO COMMENCING WORK. THIS DRAWING IS NOT TO BE SCALED.

ISSUED FOR - REVISION:

NO.	DATE	DESCRIPTION
1	2022-06-17	ISSUED FOR TENDER

PROJECT NO:	211-09894-00	DATE:	JUNE 2022
ORIGINAL SCALE:	1:200	IF THIS BAR IS NOT 25mm LONG, ADJUST YOUR PLOTTING SCALE.	
DESIGNED BY:	MB		
DRAWN BY:	CT		
CHECKED BY:	MB		

DISCIPLINE: ELECTRICAL

TITLE:

ELECTRICAL SITE PLAN

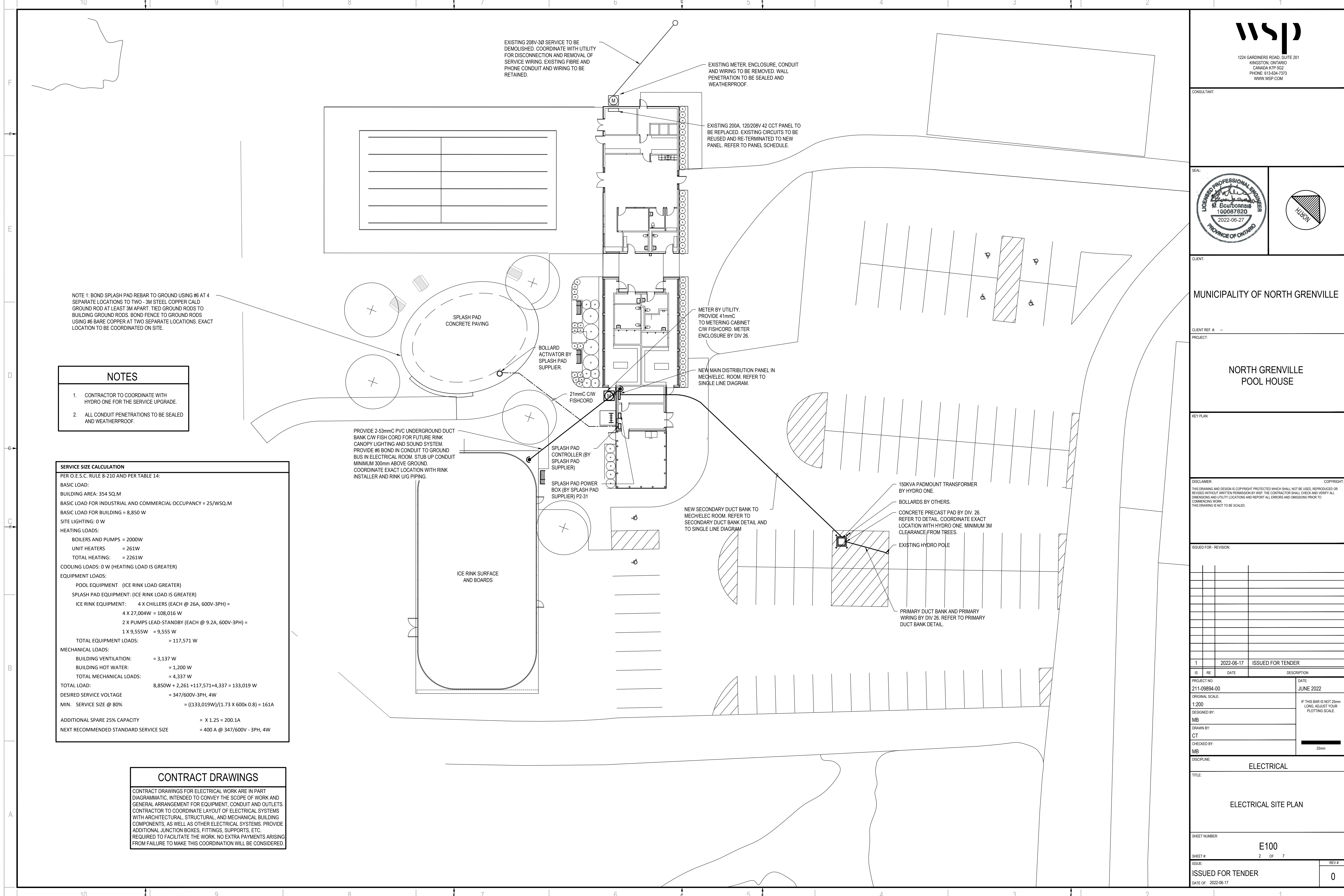
SHEET NUMBER: E100

SHEET # 2 OF 7

ISSUE: ISSUED FOR TENDER

DATE OF: 2022-06-17

C:\Users\regan\appdata\local\temp\ASD\asdh_112692211_06884-00_E100.dwg Jun 27, 2023, 4:00pm BY: (saw.legat)



EXISTING 208V-3Ø SERVICE TO BE DEMOLISHED. COORDINATE WITH UTILITY FOR DISCONNECTION AND REMOVAL OF SERVICE WIRING. EXISTING FIBRE AND PHONE CONDUIT AND WIRING TO BE RETAINED.

EXISTING METER ENCLOSURE, CONDUIT AND WIRING TO BE REMOVED. WALL PENETRATION TO BE SEALED AND WEATHERPROOF.

EXISTING 200A, 120/208V 42 CCT PANEL TO BE REPLACED. EXISTING CIRCUITS TO BE REUSED AND RE-TERMINATED TO NEW PANEL. REFER TO PANEL SCHEDULE.

METER BY UTILITY. PROVIDE 41mmC TO METERING CABINET CW FISHCORD. METER ENCLOSURE BY DIV 26.

NEW MAIN DISTRIBUTION PANEL IN MECH/ELEC ROOM. REFER TO SINGLE LINE DIAGRAM.

150KVA PADMOUNT TRANSFORMER BY HYDRO ONE.

BOLLARDS BY OTHERS.

CONCRETE PRECAST PAD BY DIV. 26. REFER TO DETAIL. COORDINATE EXACT LOCATION WITH HYDRO ONE. MINIMUM 3M CLEARANCE FROM TREES.

EXISTING HYDRO POLE

PRIMARY DUCT BANK AND PRIMARY WIRING BY DIV 26. REFER TO PRIMARY DUCT BANK DETAIL.

NEW SECONDARY DUCT BANK TO MECH/ELEC ROOM. REFER TO SECONDARY DUCT BANK DETAIL AND TO SINGLE LINE DIAGRAM

PROVIDE 2.53mmC PVC UNDERGROUND DUCT BANK CW FISH CORD FOR FUTURE RINK CANOPY LIGHTING AND SOUND SYSTEM. PROVIDE #6 BOND IN CONDUIT TO GROUND BUS IN ELECTRICAL ROOM. STUB UP CONDUIT MINIMUM 300mm ABOVE GROUND. COORDINATE EXACT LOCATION WITH RINK INSTALLER AND RINK UG PIPING.

SPLASH PAD CONTROLLER (BY SPLASH PAD SUPPLIER)

SPLASH PAD POWER BOX (BY SPLASH PAD SUPPLIER) P2-31

21mmC CW FISHCORD

BOLLARD ACTIVATOR BY SPLASH PAD SUPPLIER.

ICE RINK SURFACE AND BOARDS

SPLASH PAD CONCRETE PAVING

NOTE 1: BOND SPLASH PAD REBAR TO GROUND USING #6 AT 4 SEPARATE LOCATIONS TO TWO -3M STEEL COPPER CALD GROUND ROD AT LEAST 3M APART. TIED GROUND RODS TO BUILDING GROUND RODS. BOND FENCE TO GROUND RODS USING #6 BARE COPPER AT TWO SEPARATE LOCATIONS. EXACT LOCATION TO BE COORDINATED ON SITE.

- NOTES**
- CONTRACTOR TO COORDINATE WITH HYDRO ONE FOR THE SERVICE UPGRADE.
 - ALL CONDUIT PENETRATIONS TO BE SEALED AND WEATHERPROOF.

SERVICE SIZE CALCULATION
PER O.E.S.C. RULE 8-210 AND PER TABLE 14:

BASIC LOAD:
BUILDING AREA: 354 SQ.M
BASIC LOAD FOR INDUSTRIAL AND COMMERCIAL OCCUPANCY = 25/WSQ.M
BASIC LOAD FOR BUILDING = 8,850 W
SITE LIGHTING: 0 W
HEATING LOADS:
BOILERS AND PUMPS = 2000W
UNIT HEATERS = 261W
TOTAL HEATING = 2261W
COOLING LOADS: 0 W (HEATING LOAD IS GREATER)
EQUIPMENT LOADS:
POOL EQUIPMENT (ICE RINK LOAD GREATER)
SPLASH PAD EQUIPMENT: (ICE RINK LOAD IS GREATER)
ICE RINK EQUIPMENT: 4 X CHILLERS (EACH @ 26A, 600V-3PH) =
4 X 27,004W = 108,016 W
2 X PUMPS LEAD-STANDBY (EACH @ 9.2A, 600V-3PH) =
1 X 9,555W = 9,555 W
TOTAL EQUIPMENT LOADS: = 117,571 W
MECHANICAL LOADS:
BUILDING VENTILATION: = 3,137 W
BUILDING HOT WATER: = 1,200 W
TOTAL MECHANICAL LOADS: = 4,337 W
TOTAL LOAD: 8,850W + 2,261 + 117,571 + 4,337 = 133,019 W
DESIRED SERVICE VOLTAGE = 347/600V-3PH, 4W
MIN. SERVICE SIZE @ 80% = ((133,019W)/(1.73 X 600x 0.8)) = 161A
ADDITIONAL SPARE 25% CAPACITY = X 1.25 = 200.1A
NEXT RECOMMENDED STANDARD SERVICE SIZE = 400 A @ 347/600V - 3PH, 4W

CONTRACT DRAWINGS

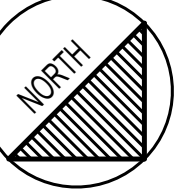
CONTRACT DRAWINGS FOR ELECTRICAL WORK ARE IN PART DIAGRAMMATIC, INTENDED TO CONVEY THE SCOPE OF WORK AND GENERAL ARRANGEMENT FOR EQUIPMENT, CONDUIT AND OUTLETS. CONTRACTOR TO COORDINATE LAYOUT OF ELECTRICAL SYSTEMS WITH ARCHITECTURAL, STRUCTURAL, AND MECHANICAL BUILDING COMPONENTS AS WELL AS OTHER ELECTRICAL SYSTEMS. PROVIDE ADDITIONAL JUNCTION BOXES, FITTINGS, SUPPORTS, ETC. REQUIRED TO FACILITATE THE WORK. NO EXTRA PAYMENTS ARISING FROM FAILURE TO MAKE THIS COORDINATION WILL BE CONSIDERED.



1224 GARDINERS ROAD, SUITE 201
KINGSTON, ONTARIO
CANADA K7P 0G2
PHONE: 613-634-7373
WWW.WSP.COM

CONSULTANT:

SEAL:



CLIENT:

MUNICIPALITY OF NORTH GRENVILLE

CLIENT REF #

PROJECT:

NORTH GRENVILLE
POOL HOUSE

KEY PLAN:

DISCLAIMER: THIS DRAWING AND DESIGN IS COPYRIGHT PROTECTED WHICH SHALL NOT BE USED, REPRODUCED OR RESIZED WITHOUT WRITTEN PERMISSION BY WSP. THE CONTRACTOR SHALL CHECK AND VERIFY ALL DIMENSIONS AND UTILITY LOCATIONS AND REPORT ALL ERRORS AND OMISSIONS PRIOR TO COMMENCING WORK. THIS DRAWING IS NOT TO BE SCALED.

ISSUED FOR - REVISION:

NO.	DATE	DESCRIPTION
1	2022-06-17	ISSUED FOR TENDER

PROJECT NO.	DATE
211-09894-00	JUNE 2022

ORIGINAL SCALE:	AS SHOWN	IF THIS BAR IS NOT 25mm LONG, ADJUST YOUR PLOTTING SCALE.
DESIGNED BY:	NS	
DRAWN BY:	NS	
CHECKED BY:	MB	
DISCIPLINE:	ELECTRICAL	

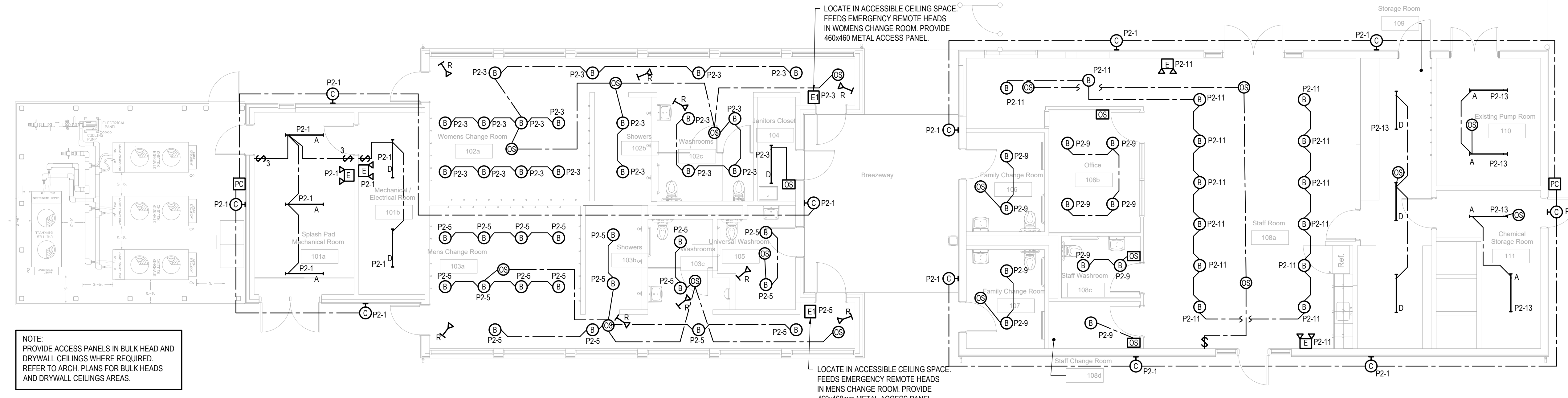
TITLE:
LIGHTING, POWER & SYSTEMS LAYOUT

SHEET NUMBER:
E200

SHEET #	OF	REV #
3	7	0

ISSUE: ISSUED FOR TENDER

DATE OF: 2022-06-17

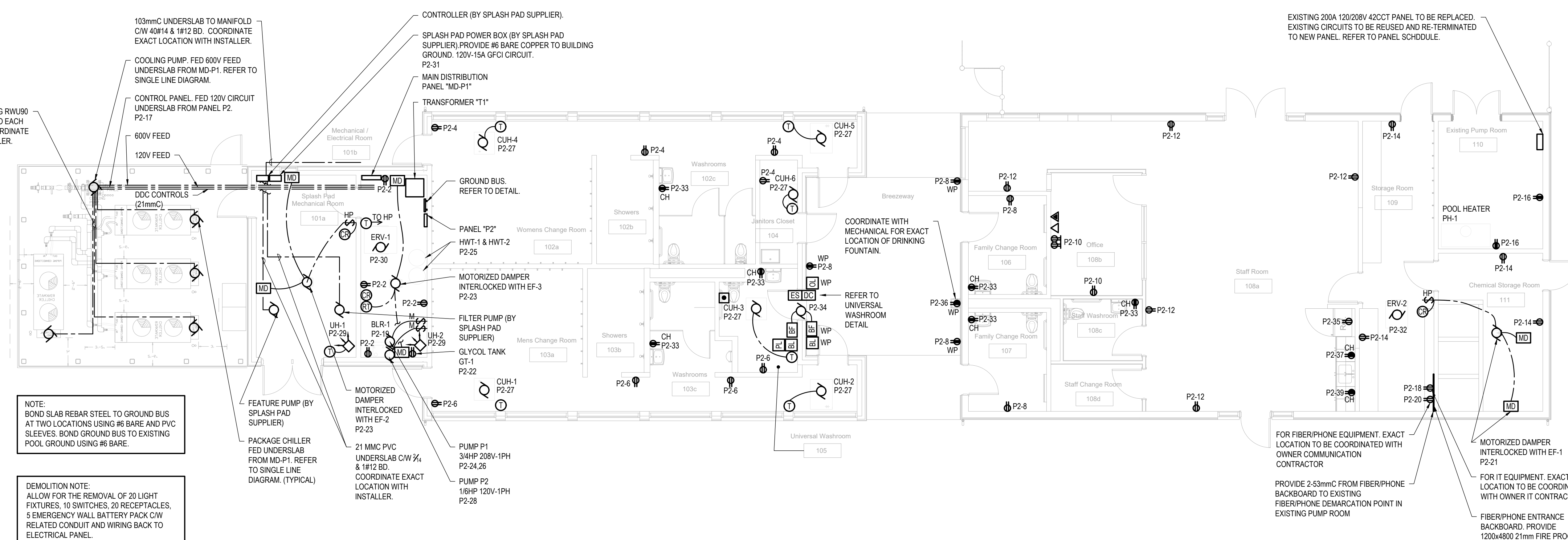


NOTE: PROVIDE ACCESS PANELS IN BULK HEAD AND DRYWALL CEILINGS WHERE REQUIRED. REFER TO ARCH. PLANS FOR BULK HEADS AND DRYWALL CEILINGS AREAS.

LOCATE IN ACCESSIBLE CEILING SPACE. FEEDS EMERGENCY REMOTE HEADS IN WOMENS CHANGE ROOM. PROVIDE 460x460 METAL ACCESS PANEL.

LOCATE IN ACCESSIBLE CEILING SPACE. FEEDS EMERGENCY REMOTE HEADS IN MENS CHANGE ROOM. PROVIDE 460x460mm METAL ACCESS PANEL.

1 LIGHTING LAYOUT
SCALE: 1:75



NOTE: BOND SLAB REBAR STEEL TO GROUND BUS AT TWO LOCATIONS USING #6 BARE AND PVC SLEEVES. BOND GROUND BUS TO EXISTING POOL GROUND USING #6 BARE.

DEMOLITION NOTE: ALLOW FOR THE REMOVAL OF 20 LIGHT FIXTURES, 10 SWITCHES, 20 RECEPTACLES, 5 EMERGENCY WALL BATTERY PACK CW RELATED CONDUIT AND WIRING BACK TO ELECTRICAL PANEL.

EXISTING 200A 120/208V 420CT PANEL TO BE REPLACED. EXISTING CIRCUITS TO BE REUSED AND RE-TERMINATED TO NEW PANEL. REFER TO PANEL SCHEDULE.

FOR FIBER/PHONE EQUIPMENT. EXACT LOCATION TO BE COORDINATED WITH OWNER COMMUNICATION CONTRACTOR

PROVIDE 2-53mmC FROM FIBER/PHONE BACKBOARD TO EXISTING FIBER/PHONE DEMARCATION POINT IN EXISTING PUMP ROOM

CONTRACT DRAWINGS

CONTRACT DRAWINGS FOR ELECTRICAL WORK ARE IN PART DIAGRAMMATIC. INTENDED TO CONVEY THE SCOPE OF WORK AND GENERAL ARRANGEMENT FOR EQUIPMENT, CONDUIT AND OUTLETS. CONTRACTOR TO COORDINATE LAYOUT OF ELECTRICAL SYSTEMS WITH ARCHITECTURAL, STRUCTURAL, AND MECHANICAL BUILDING COMPONENTS, AS WELL AS OTHER ELECTRICAL SYSTEMS. PROVIDE ADDITIONAL JUNCTION BOXES, FITTINGS, SUPPORTS, ETC. REQUIRED TO FACILITATE THE WORK. NO EXTRA PAYMENTS ARISING FROM FAILURE TO MAKE THIS COORDINATION WILL BE CONSIDERED.

2 POWER & SYSTEMS LAYOUT
SCALE: 1:75



1224 GARDINERS ROAD, SUITE 201
KINGSTON, ONTARIO
CANADA K7P 0G2
PHONE: 613-634-7373
WWW.WSP.COM

CONSULTANT:

SEAL:



CLIENT:

MUNICIPALITY OF NORTH GRENVILLE

CLIENT REF. #

PROJECT:

NORTH GRENVILLE
POOL HOUSE

KEY PLAN:

DISCLAIMER: THIS DRAWING AND DESIGN IS COPYRIGHT PROTECTED WHICH SHALL NOT BE USED, REPRODUCED OR REVISED WITHOUT WRITTEN PERMISSION BY WSP. THE CONTRACTOR SHALL CHECK AND VERIFY ALL DIMENSIONS AND UTILITY LOCATIONS AND REPORT ALL ERRORS AND OMISSIONS PRIOR TO COMMENCING WORK. THIS DRAWING IS NOT TO BE SCALED.

ISSUED FOR - REVISION:

NO.	DATE	DESCRIPTION
1	2022-06-17	ISSUED FOR TENDER

PROJECT NO. 211-09894-00 DATE: JUNE 2022

ORIGINAL SCALE: AS SHOWN IF THIS BAR IS NOT 25mm LONG, ADJUST YOUR PLOTTING SCALE.

DESIGNED BY: NS

DRAWN BY: NS

CHECKED BY: MB

DISCIPLINE: ELECTRICAL

TITLE: SINGLE LINE DIAGRAM

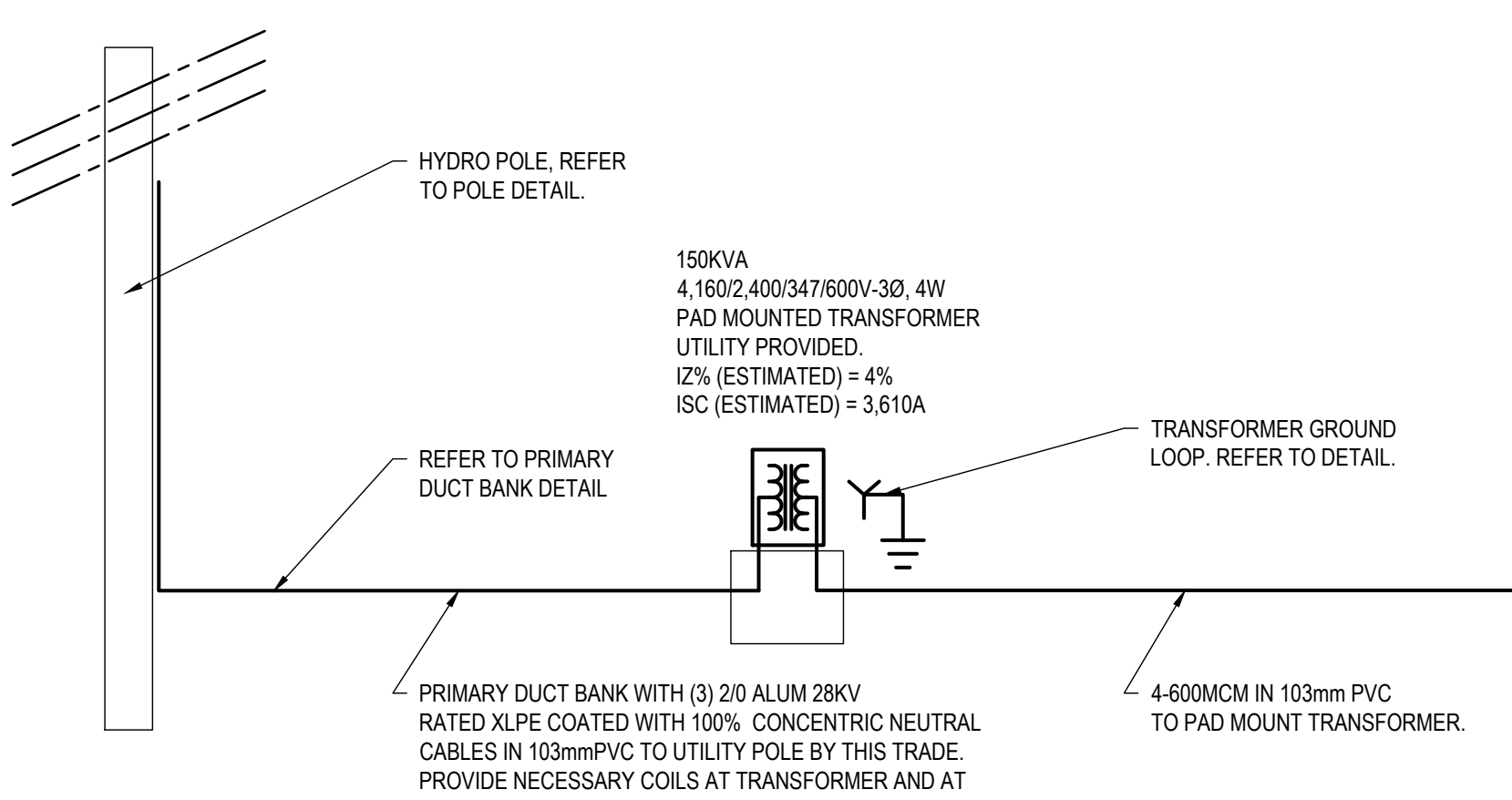
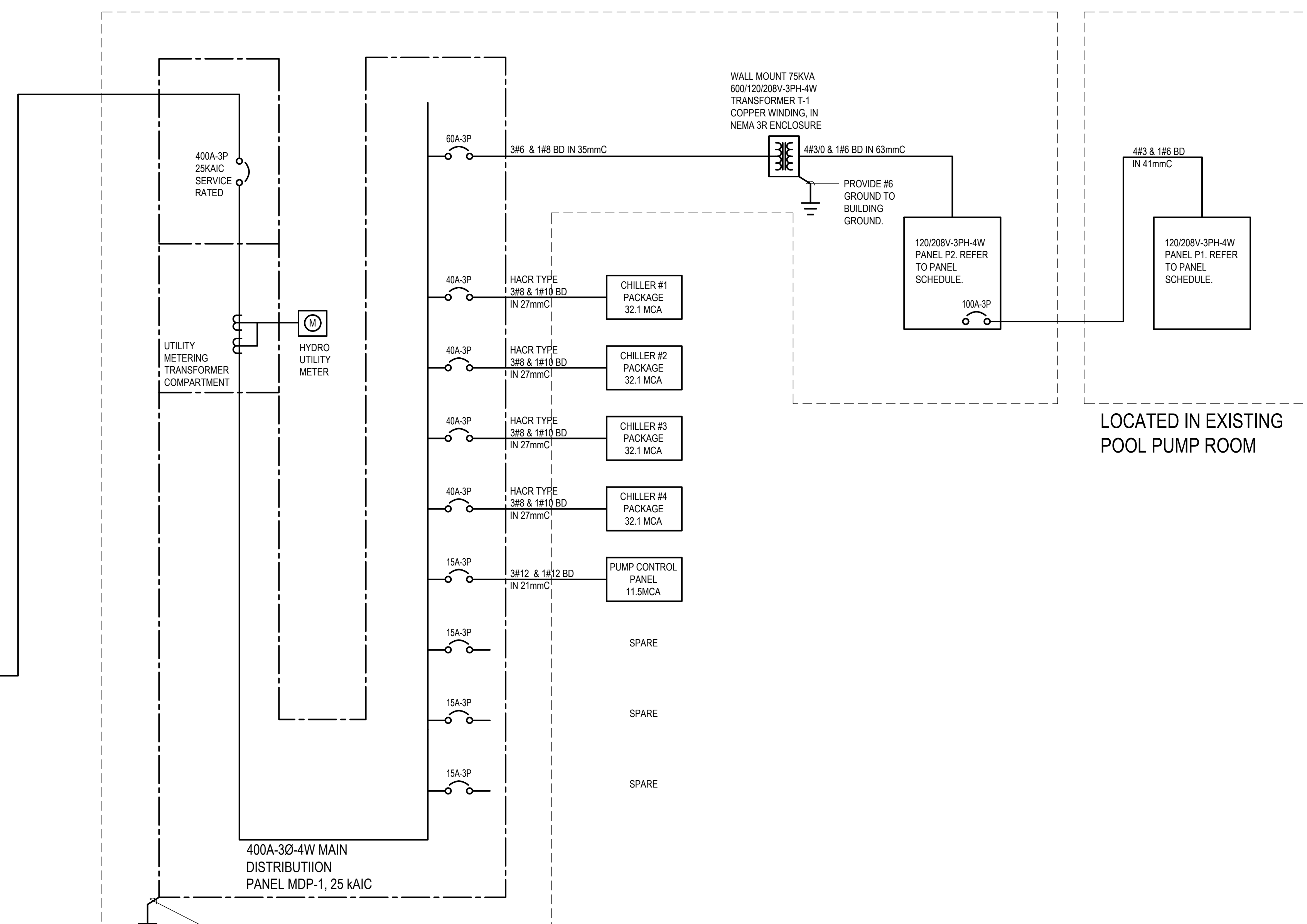
SHEET NUMBER: E300

SHEET # 4 OF 7

ISSUE: ISSUED FOR TENDER

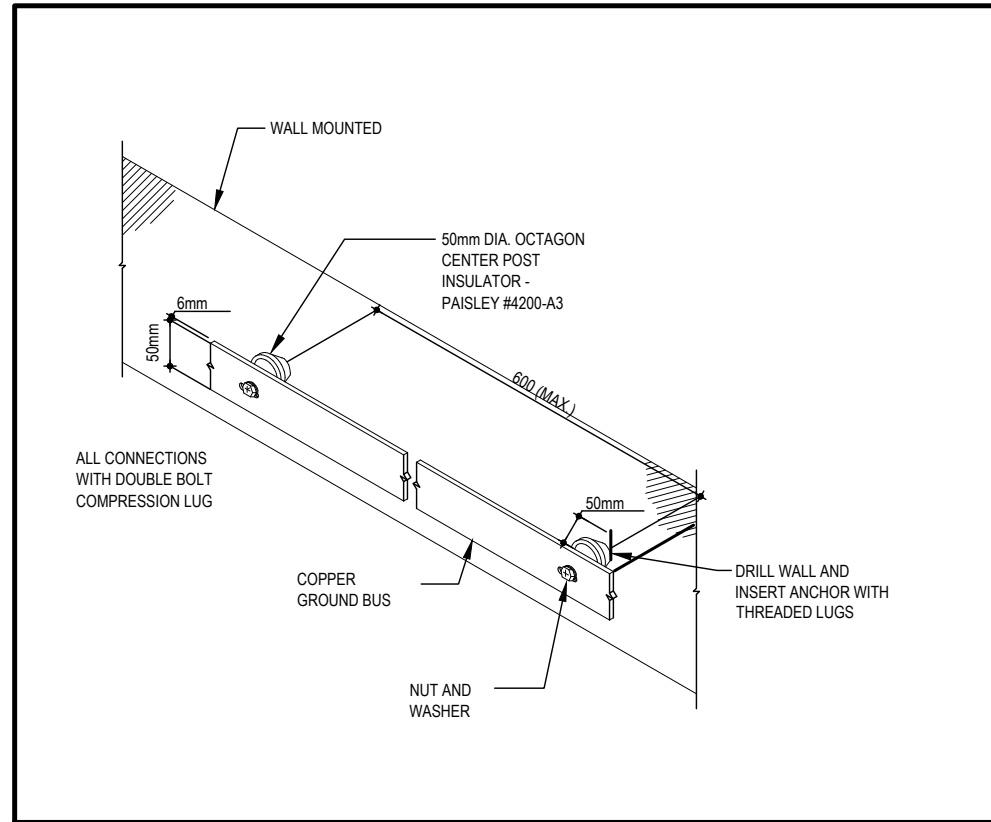
DATE OF: 2022-06-17

REV # 0

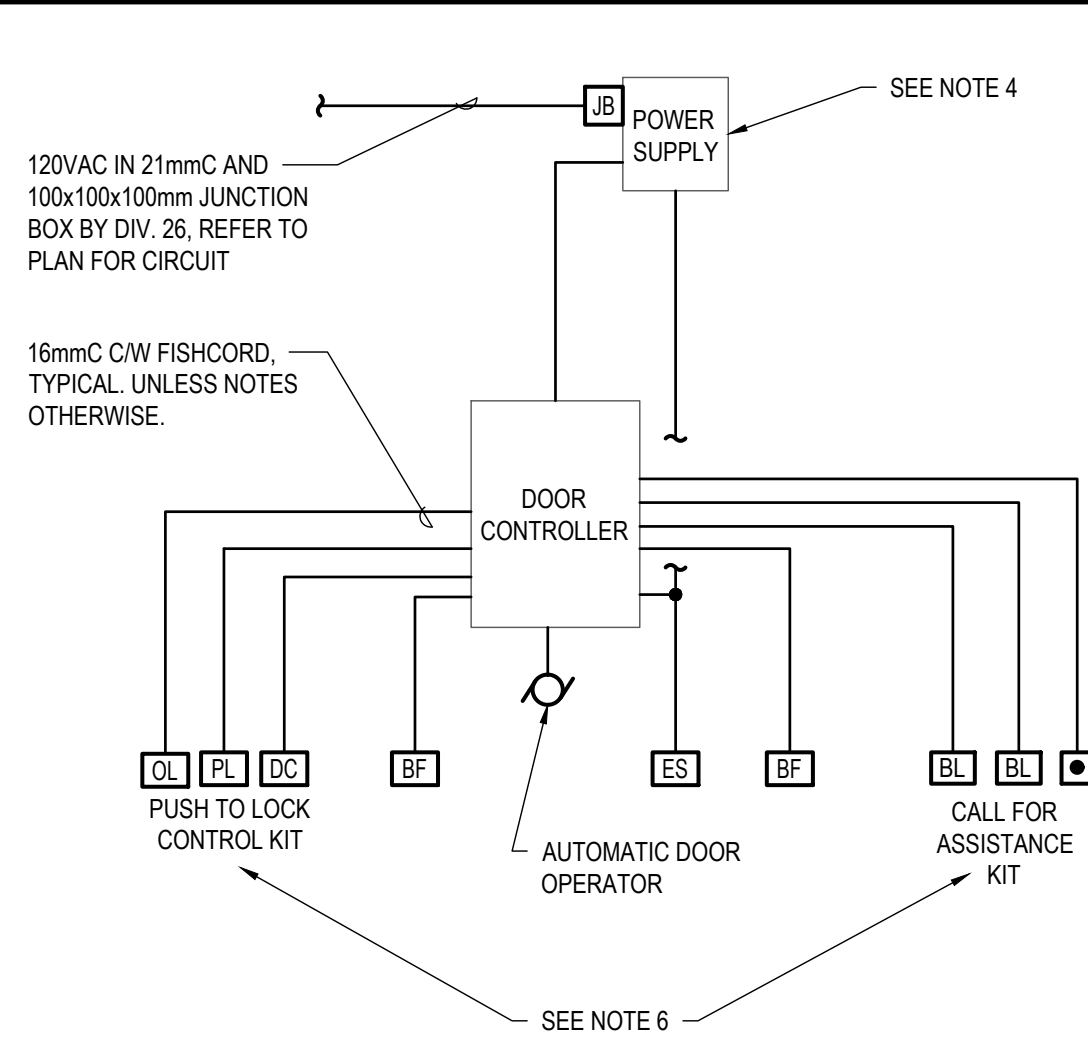


CONTRACT DRAWINGS

CONTRACT DRAWINGS FOR ELECTRICAL WORK ARE IN PART
DIAGRAMMATIC. INTENDED TO CONVEY THE SCOPE OF WORK AND
GENERAL ARRANGEMENT FOR EQUIPMENT, CONDUIT AND OUTLETS.
CONTRACTOR TO COORDINATE LAYOUT OF ELECTRICAL SYSTEMS
WITH ARCHITECTURAL, STRUCTURAL, AND MECHANICAL BUILDING
COMPONENTS, AS WELL AS OTHER ELECTRICAL SYSTEMS. PROVIDE
ADDITIONAL JUNCTION BOXES, FITTINGS, SUPPORTS, ETC.
REQUIRED TO FACILITATE THE WORK. NO EXTRA PAYMENTS ARISING
FROM FAILURE TO MAKE THIS COORDINATION WILL BE CONSIDERED.



1 GROUND BUS DETAIL (TYP.)
SCALE: N.T.S.



2 UNIVERSAL WASHROOM DETAIL
SCALE: N.T.S.

- ### NOTES
- POWER SUPPLY TO BE MOUNTED IN THE CEILING.
 - ALL WALL MOUNTED MATERIAL IS TO HAVE WIRING BROUGHT BACK TO THE POWER SUPPLY BOX.
 - "DO NOT RUN" LOW VOLTAGE AND HIGH VOLTAGE WIRING TOGETHER.
 - ONE 15A CIRCUIT IS NEEDED FOR THE POWER SUPPLY BOX, REFER TO DRAWINGS FOR CIRCUIT NUMBER.
 - REFER TO ARCHITECTURAL DRAWING FOR EXACT LOCATION OF DEVICES AND ELEVATIONS. PUSHBUTTONS ARE TO BE CENTERED 1100mm FROM FINISHED FLOOR LEVEL.
 - UNIVERSAL WASHROOM DEVICE KITS:
 - POWER SUPPLY STANDARD OF ACCEPTANCE: LAB-PS241F 12-24VDC/1.0A POWER SUPPLY C/W BUILT-IN GELL CELL, BATTERY CHARGER, AUTOMATIC SWITCHOVER TO STANDBY BATTERY IN CASE OF AC POWER FAILURE AND JUNCTION BOX, OR APPROVED EQUIVALENT
 - PUSH TO LOCK CONTROL KIT STANDARD OF ACCEPTANCE: CAMDEN DOOR CONTROLS CX-WC11 OR APPROVED ALTERNATE.
 - CALL FOR ASSISTANCE KIT STANDARD OF ACCEPTANCE: EDWARDS 6538ONT-G5 OR APPROVED ALTERNATE.
 - AUTOMATIC DOOR OPERATOR, DOOR CONTROLLER, DEVICES AND LOW VOLTAGE INTERCONNECTION WIRING SHOWN IN THIS DETAIL BY DOOR HARDWARE SUPPLIER. ALL REQUIRED CONDUIT, BACKBOXES, FITTINGS, ETC. BY DIVISION 26. ALL 120V CIRCUIT WIRING, BACKBOXES, CONDUITS AND 120V CIRCUIT BY DIVISION 26.
 - DIVISION 26 SHALL COORDINATE WITH DOOR HARDWARE SUPPLIER TO PROVIDE A FULL OPERATIONAL SYSTEM. DIVISION 26 TO PROVIDE BACK BOXES AND CONDUIT FOR WALL MOUNTED DEVICES TO DOOR CONTROLLER LOCATED IN ACCESSIBLE CEILING SPACE ABOVE DOOR.
 - ALL BACKBOX SIZE SHALL BE COORDINATED WITH UNIVERSAL WASHROOM KIT AND DOOR HARDWARE SUPPLIER.

KW	LEG	DESCRIPTION	BKR	CCT #	CCT #	BKR	DESCRIPTION	LEG	KW
-	L	OUTSIDE LIGHT	15	1	2	15	VENT FAN NORTH	P	-
-	L	EMERGENCY LIGHTS	15	3	4	15	EXISTING	P	-
-	L	LIGHT	15	5	6	15	VENT FAN SOUTH	P	-
-	P	EXISTING	15	7	8	15	BACK OFFICE	P	-
-	P	CHANGE ROOM	15	9	10	15	EXISTING	P	-
-	P	HOT WATER	15	11	12	50	EXISTING	P	
-	P	TANK	15	13	14				
-	P	WATER COOLER	15	15	16	3P			
-	P	CHLORINE PUMP	15	17	18	15	CHLORINE ROOM	P	-
-	-	-	15	19	20	20	POOL BOILER	P	-
-	-	-	15	21	22	20	EXISTING	P	-
-	-	-	15	23	24	15	OFFICE RECEP	P	-
-	-	-	15	25	26	15	OFFICE RECEP		
-	-	-	15	27	28	15	WIFI RECEP	P	-
-	-	-	15	29	30	-	-	-	-
-	-	-	15	31	32	-	-	-	-
-	-	-	15	33	34	-	-	-	-
-	-	-	15	35	36	-	-	-	-
-	-	-	-	37	38	-	-	-	-
-	-	EXISTING	20	39	40	-	-	-	-
-	-	EXISTING	20	41	42	-	-	-	-
TYPE: SURFACE MOUNTED C/W LOCKABLE DOOR AND DRIP SHIELD			SHORT CIRCUIT RATING: 10kA						
MAINS RATING: 200A			MAIN BREAKER C/W BARRIER: -						
VOLTAGE RATING: 120/208V, 3-PH, 4-W			FED FROM: PANEL P2						
LEGEND:									
P-POWER, H-HEATING, L-LIGHTING, M-MOTOR, *-GFCI BKR									
EXISTING PANEL 'P1' TO BE REPLACED					LOCATION: EXISTING PUMP ROOM				

KW	LEG	DESCRIPTION	BKR	CCT #	CCT #	BKR	DESCRIPTION	LEG	KW
-	L	LIGHTING, MECH & ELEC ROOM 101	15	1	2	15	RECEPTACLES, MECH & ELEC ROOM 101	P	0.72
-	L	LIGHTING, ROOMS 102A, 102B, 102C, 104	15	3	4	15	RECEPTACLES, ROOMS 102A, 102B, 102C, 104	P	0.90
-	L	LIGHTING, ROOMS 103A, 103B, 103C, 105	15	5	6	15	RECEPTACLES, ROOMS 103A, 103B, 103C, 105	P	0.90
-	L	LIGHTING, UNNAMED	15	7	8	15	RECEPTACLES, ROOMS 106, 107, UNNAMED	P	1.08
-	L	LIGHTING, ROOMS 106, 107, 108A, 108B, 108C	15	9	10	15	RECEPTACLES, ROOMS 106, 107, 108A, 108B, 108C	P	0.90
-	L	LIGHTING, STAFF ROOM 108	15	11	12	15	RECEPTACLES, STAFF ROOM 108	P	1.08
-	L	LIGHTING, ROOMS 109, 110, 111	15	13	14	15	RECEPTACLES, ROOMS 109, 111	P	0.72
-	L	EXTERIOR LIGHTING	15	15	16	15	RECEPTACLES, EXISTING PUMP ROOM 110	P	0.72
-	P	CONTROL PANEL	15	17	18	15	RECEPTACLE FOR DATA EQUIPMENT	P	-
-	P	BLR-1	15	19	20	15	RECEPTACLE FOR FIBER/PHONE EQUIPMENT	P	-
-	P	EF-1	15	21	22	15	RECEPTACLE FOR GLYCOL TANK	P	-
-	P	EF-2 & EF-3	15	23	24	20	PUMP P-1	P	-
-	P	HOT WATER TANKS HWT-1 & HWT-2	15	25	26	2P			
0.18	P	CUH-1, CUH-2, CUH-3, CUH-4, CUH-5, CUH-6	15	27	28	15	PUMP P-2	P	-
0.07	P	UH-1 & UH-2	15	29	30	15	ERV-1	P	-
-	P	SPLASH PAD POWER BOX (30ma GFCI)	15	31	32	15	ERV-2	P	-
-	P	RECEPTACLES AT W/R SINKS	15	33	34	15	UNIVERSAL WASHROOM	P	-
-	P	FRIDGE RECEPTACLE	15	35	36	20	DRINKING FOUNTAIN	P	-
-	-	STAFF ROOM COUNTER RECEPTACLE	20	37	38	15	SPARE		
-	-	STAFF ROOM COUNTER RECEPTACLE	20	39	40	15	SPARE		
-	-	SPARE	15	41	42	15	SPARE		
-	-	SPARE	15	43	44	15	SPARE		
-	-	SPARE	15	45	46	15	SPARE		
-	-	SPARE	15	47	48	15	SPARE		
-	-	SPARE	15	49	50	20	SPARE		
-	-	SPARE	15	51	52	20	SPARE		
-	-	SPARE	15	53	54	20	SPARE		
-	-	-	-	55	56	100	PANEL P1	-	-
-	-	-	-	57	58				
-	-	-	-	59	60	3P			

TYPE: SURFACE MOUNTED C/W LOCKABLE DOOR AND DRIP SHIELD	SHORT CIRCUIT RATING: 10kA
MAINS RATING: 200A	MAIN BREAKER C/W BARRIER: 200A
VOLTAGE RATING: 120/208V, 3-PH, 4-W	FED FROM: TRANSFORMER 'T1'
LEGEND:	
P-POWER, H-HEATING, L-LIGHTING, M-MOTOR, *-GFCI BKR	
PANEL 'P2'	LOCATION: MECH & ELEC ROOM 101

CONTRACT DRAWINGS
 CONTRACT DRAWINGS FOR ELECTRICAL WORK ARE IN PART DIAGRAMMATIC. INTENDED TO CONVEY THE SCOPE OF WORK AND GENERAL ARRANGEMENT FOR EQUIPMENT, CONDUIT AND OUTLETS. CONTRACTOR TO COORDINATE LAYOUT OF ELECTRICAL SYSTEMS WITH ARCHITECTURAL, STRUCTURAL, AND MECHANICAL BUILDING COMPONENTS, AS WELL AS OTHER ELECTRICAL SYSTEMS. PROVIDE ADDITIONAL JUNCTION BOXES, FITTINGS, SUPPORTS, ETC. REQUIRED TO FACILITATE THE WORK. NO EXTRA PAYMENTS ARISING FROM FAILURE TO MAKE THIS COORDINATION WILL BE CONSIDERED.

1224 GARDINERS ROAD, SUITE 201
KINGSTON, ONTARIO
CANADA K7P 0G2
PHONE: 613-634-7373
WWW.WSP.COM

CONSULTANT:

M. Boufournais
160087920
2022-06-27
PROVINCE OF ONTARIO

CLIENT:

MUNICIPALITY OF NORTH GRENVILLE

CLIENT REF # : --
PROJECT:

**NORTH GRENVILLE
POOL HOUSE**

KEY PLAN:

DISCLAIMER: THIS DRAWING AND DESIGN IS COPYRIGHT PROTECTED WHICH SHALL NOT BE USED, REPRODUCED OR REVISED WITHOUT WRITTEN PERMISSION BY WSP. THE CONTRACTOR SHALL CHECK AND VERIFY ALL DIMENSIONS AND UTILITY LOCATIONS AND REPORT ALL ERRORS AND OMISSIONS PRIOR TO COMMENCING WORK. THIS DRAWING IS NOT TO BE SCALED.

ISSUED FOR - REVISION:

NO.	DATE	DESCRIPTION
1	2022-06-17	ISSUED FOR TENDER

PROJECT NO.	DATE:
211-09894-00	JUNE 2022

ORIGINAL SCALE: AS SHOWN
 DESIGNED BY: NS
 DRAWN BY: NS
 CHECKED BY: MB

DISCIPLINE: ELECTRICAL

TITLE: PANEL SCHEDULE & DETAILS

SHEET NUMBER: E400
 SHEET # 5 OF 7
 ISSUE: ISSUED FOR TENDER
 DATE OF: 2022-06-17

